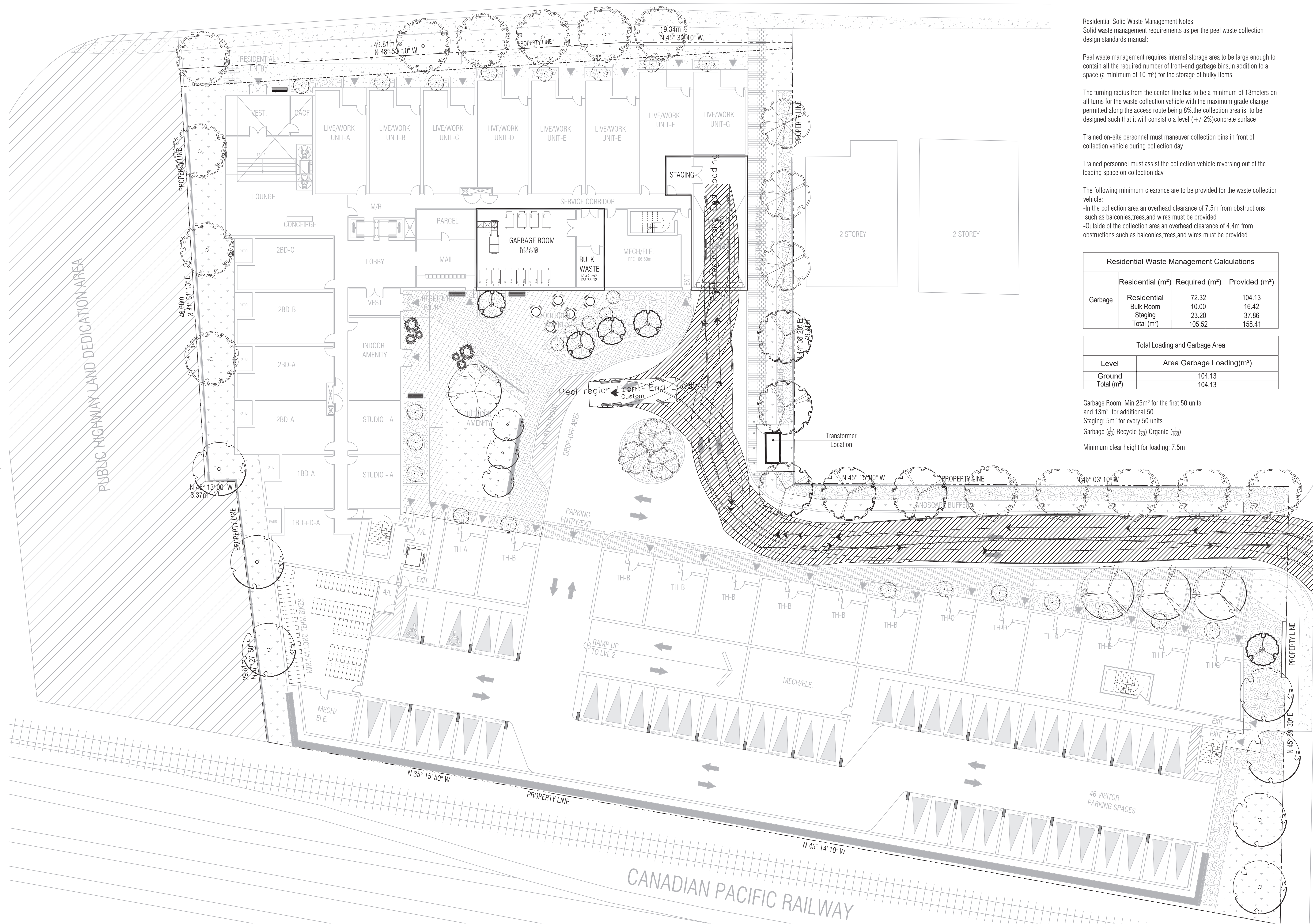


QUEEN STREET SOUTH



Residential Solid Waste Management Notes:
Solid waste management requirements as per the peel waste collection design standards manual:

Peel waste management requires internal storage area to be large enough to contain all the required number of front-end garbage bins, in addition to a space (a minimum of 10 m²) for the storage of bulky items

The turning radius from the center-line has to be a minimum of 13 meters on all turns for the waste collection vehicle with the maximum grade change permitted along the access route being 8%, the collection area is to be designed such that it will consist of a level (+/-2%) concrete surface

Trained on-site personnel must maneuver collection bins in front of collection vehicle during collection day

Trained personnel must assist the collection vehicle reversing out of the loading space on collection day

The following minimum clearance are to be provided for the waste collection vehicle:

- In the collection area an overhead clearance of 7.5m from obstructions such as balconies, trees, and wires must be provided
- Outside of the collection area an overhead clearance of 4.4m from obstructions such as balconies, trees, and wires must be provided

Residential Waste Management Calculations			
	Residential (m ²)	Required (m ²)	Provided (m ²)
Garbage	Residential	72.32	104.13
	Bulk Room	10.00	16.42
	Staging	23.20	37.86
	Total (m ²)	105.52	158.41

Total Loading and Garbage Area	
Level	Area Garbage Loading(m ²)
Ground	104.13
Total (m ²)	104.13

Garbage Room: Min 25m² for the first 50 units and 13m² for additional 50
 Staging: 5m² for every 50 units
 Garbage (♻️) Recycle (♻️) Organic (♻️)
 Minimum clear height for loading: 7.5m

THIS DRAWING, AS AN INSTRUMENT OF SERVICE, IS PROVIDED BY AND IS THE PROPERTY OF GRAZIANI-CORAZZA ARCHITECTS INC. THE CONTRACTOR MUST VERIFY AND ACCEPT RESPONSIBILITY FOR ALL DIMENSIONS AND CONDITIONS ON SITE AND MUST NOTIFY GRAZIANI-CORAZZA ARCHITECTS INC. OF ANY VARIATIONS FROM THE SUPPLIED INFORMATION. GRAZIANI-CORAZZA ARCHITECTS INC. IS NOT RESPONSIBLE FOR THE ACCURACY OF SURVEY, STRUCTURAL, MECHANICAL, ELECTRICAL, AND OTHER ENGINEERING INFORMATION SHOWN ON THIS DRAWING. REFER TO THE APPROPRIATE ENGINEERING DRAWINGS BEFORE PROCEEDING WITH THE WORK. CONSTRUCTION MUST CONFORM TO ALL APPLICABLE CODES AND REQUIREMENTS OF THE AUTHORITIES HAVING JURISDICTION, UNLESS OTHERWISE NOTED. NO INVESTIGATION HAS BEEN UNDERTAKEN OR REPORTED ON BY THIS OFFICE IN REGARDS TO THE ENVIRONMENTAL CONDITION OF THIS SITE.

THIS DRAWING IS NOT TO BE SCALED. ALL ARCHITECTURAL SYMBOLS INDICATED ON THIS DRAWING ARE GRAPHIC REPRESENTATIONS ONLY.

CONDITIONS FOR ELECTRONIC INFORMATION TRANSFER:

ELECTRONIC INFORMATION IS SUPPLIED TO THE OTHER ASSOCIATED FIRMS TO ASSIST THEM IN THE EXECUTION OF THEIR WORK/REVIEW. THE RECIPIENT FIRMS MUST DETERMINE THE COMPLETENESS/APPROPRIATENESS/RELEVANCE OF THE INFORMATION IN RESPECT TO THEIR PARTICULAR RESPONSIBILITY.

GRAZIANI-CORAZZA ARCHITECTS INC. SHALL NOT BE RESPONSIBLE FOR:
 1. ERRORS, OMISSIONS, INCOMPLETENESS DUE TO LOSS OF INFORMATION IN WHOLE OR PART WHEN INFORMATION IS TRANSFERRED.
 2. TRANSMISSION OF ANY VIRUS OR DAMAGE TO THE RECEIVING ELECTRONIC SYSTEM WHEN INFORMATION IS TRANSFERRED.

- 01. FEB.03.2023 issued for ZBA + OPA BG
- 02. JUL.07.2023 re-issued for ZBA + OPA BG
- 03. SEP.27.2023 re-issued for ZBA + OPA BG

issued for revisions

GRAZIANI CORAZZA ARCHITECTS
 BERARDO E. GRAZIANI LICENCE 4684
 8400 JANE STREET, BUILDING D-SUITE 300 CONCORD, ONTARIO L4K 4L8
 T.905.795.2601 F.905.795.2844 WWW.GC-ARCHITECTS.COM

Mixed-Use
Queen + Britannia
 02/OPA 21-14 W11
 6,10,12 Queen Street South, 16 James Street & 2 William Street
 Mississauga Ontario

PROJECT ARCHITECT: B. Graziani
 ASSISTANT DESIGNER: C. Kotva
 DRAWN BY: S.P.
 CHECKED BY: G. COLANGELO / D. BIASE
 PLOT DATE: OCT.05.2023
 JOB #: 2045.22