

**EXTERIOR FINISH LEGEND**

21115 - 805 DUNDAS STREET EAST

**1A** ARCHITECTURAL PRE-CAST CONCRETE PANEL  
 COLOUR : LIGHT  
 MANUFACTURER : RES PRECAST INC.  
 STYLE : SANDBLASTED

**1B** ARCHITECTURAL PRE-CAST CONCRETE PANEL  
 COLOUR : DARK  
 MANUFACTURER : RES PRECAST INC.  
 STYLE : SANDBLASTED

**2** ARCHITECTURAL BRICK MASONRY  
 COLOUR : DARK  
 MANUFACTURER : -  
 STYLE : MODULAR

**3A** PREFINISHED WINDOW WALL SYSTEM - VISION PANEL  
 GLAZING : CLEAR  
 MANUFACTURER : GUARDIAN SUNGUARD  
 FRAMING : ALUMINUM

**3B** PREFINISHED WINDOW WALL SYSTEM - GLASS SPANDREL PANEL  
 GLASS COLOUR : #3-4595 GRAY THORN - VITRO CLEAR 6MM  
 MANUFACTURER : OPACI-COAT-300  
 FRAMING : ALUMINUM

**3C** PREFINISHED WINDOW WALL SYSTEM - FRITTED VISION PANEL  
 GLAZING : BIRD1st ETCH 21  
 MANUFACTURER : GUARDIAN SUNGUARD  
 FRAMING : ALUMINUM

**4** PREFINISHED WINDOW WALL - METAL PANELS / MULLION  
 COLOUR : DARK  
 MANUFACTURER : -  
 METAL PANEL : PREFINISHED ALUMINUM

**5** PREFINISHED WINDOW WALL - METAL PANELS  
 COLOUR : COPPER  
 MANUFACTURER : -  
 METAL PANEL : PREFINISHED ALUMINUM

**6** MECHANICAL LOUVERS  
 COLOUR : TO MATCH  
 MANUFACTURER : -

**7A** PREFINISHED CANOPY  
 COLOUR : COPPER  
 MANUFACTURER : -  
 METAL PANEL : PREFINISHED ALUMINUM

**7B** PREFINISHED CANOPY  
 COLOUR : LIGHT  
 MANUFACTURER : -  
 METAL PANEL : PREFINISHED ALUMINUM

**8** ROOF - SOFFIT WITH ROOF SHINGLE  
 COLOUR : DARK  
 MANUFACTURER : -

**9A** PREFINISHED METAL ROOFING  
 COLOUR : LIGHT  
 MANUFACTURER : -  
 METAL PANEL : ALUMINUM

**9B** PREFINISHED METAL ROOFING  
 COLOUR : DARK  
 MANUFACTURER : -  
 METAL PANEL : ALUMINUM

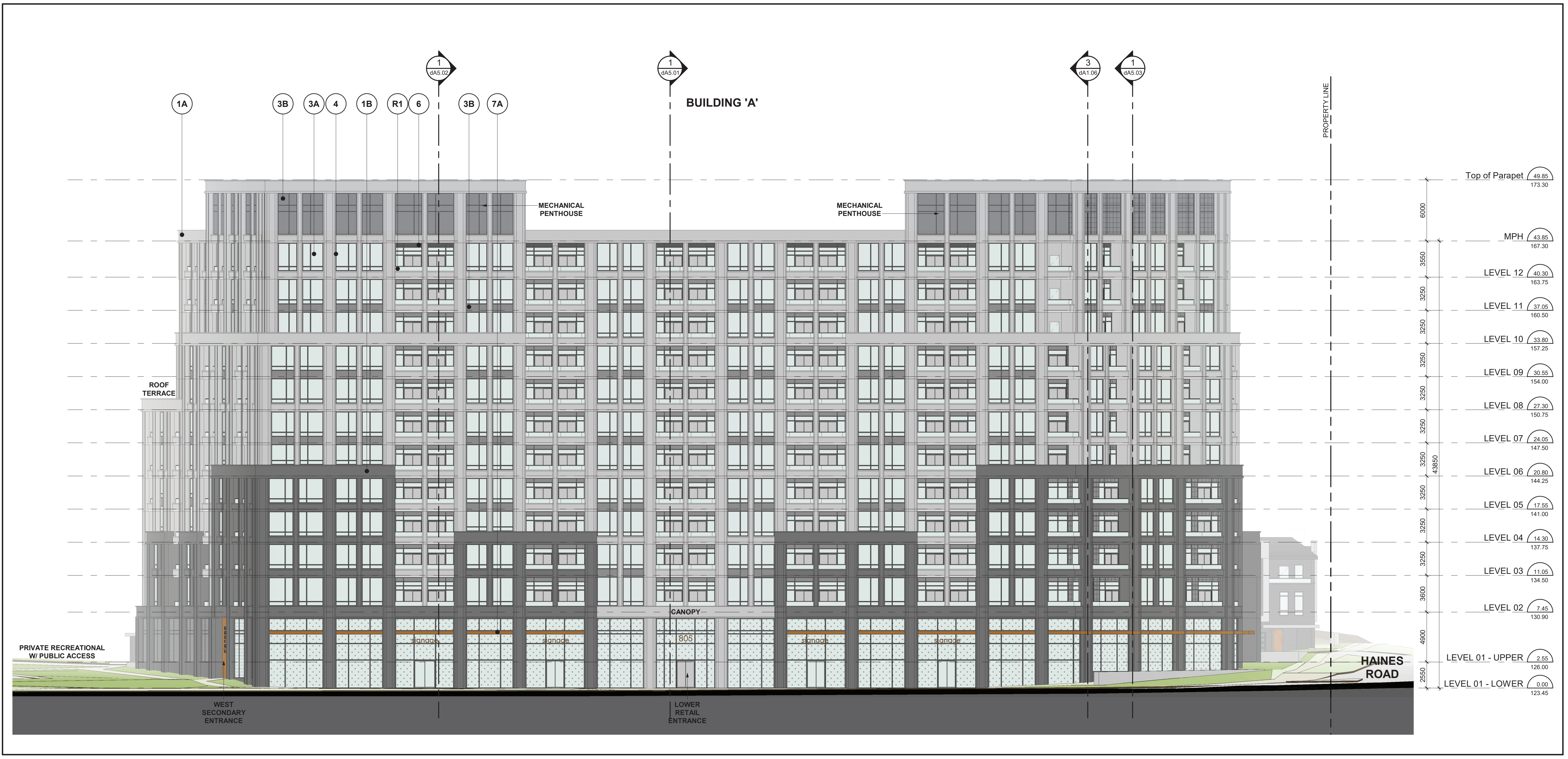
**10A** PREFINISHED LOADING DOOR  
 COLOUR : TO MATCH  
 MANUFACTURER : -

**10B** TOWNHOUSE GARAGE DOOR  
 COLOUR : DARK  
 MANUFACTURER : -  
 GLASS TYPE : TRANSLUCENT

**11** TOWNHOUSE ENTRY DOOR  
 COLOUR : COPPER  
 MANUFACTURER : -

**R1** RAILING W/ TINTED GLASS AND SLAB COVERS  
 MATERIAL : PREFINISHED ALUMINUM  
 GLASS TYPE : TEMPERED

Exterior Finish Legend **2**  
 NTS dA4.01



South Elevation **1**  
 1 : 200 dA4.01

All Drawings, Specifications, and Related Documents are the Copyright of the Architect. The Architect retains all rights to control all uses of these documents for the intended issuance/use as identified below. Reproduction of these Documents, without permission from the Architect, is strictly prohibited. The Authorities Having Jurisdiction are permitted to use, distribute, and reproduce these drawings for the intended issuance as noted and dated below, however the extended permission to the Authorities Having Jurisdiction in no way debases or limits the Copyright of the Architect, or control of use of these documents by the Architect.

Do not scale the drawings.  
 This Drawing is Not To Be Used For Construction Until Signed By The Architect.  
 Date:

**KIRKOR**  
 ARCHITECTS AND PLANNERS  
 20 De Boers Drive Suite 400  
 Toronto, ON M3J 0H1

Revisions:  
 No.: Revision: Date:

No.	Revision:	Date:
2	Rezoning Re-submission	June 23, 2023
1	Rezoning Submission	Oct. 31, 2022

No.: Issued For: Date:

Client:  
**KJC PROPERTIES INC.**  
 805 Dundas Street East, Mississauga, ON.  
 Proposed Residential Development

Drawing Title:  
**Elevations - Condominium**  
 Scale:  
**1 : 200**  
 Drawn by:  
**S.Y.**  
 Checked by:  
**D.S.**  
 Project No.:  
**21-115**  
 Date:  
**JUNE 22, 2023**  
 Drawing No.:

**dA4.01**

Plot Date: 6/23/2023 8:09:37 AM File Path: C:\Users\2023\21115\21115.dwg Plot Date: 6/23/2023 8:09:37 AM File Path: C:\Users\2023\21115\21115.dwg

**EXTERIOR FINISH LEGEND**

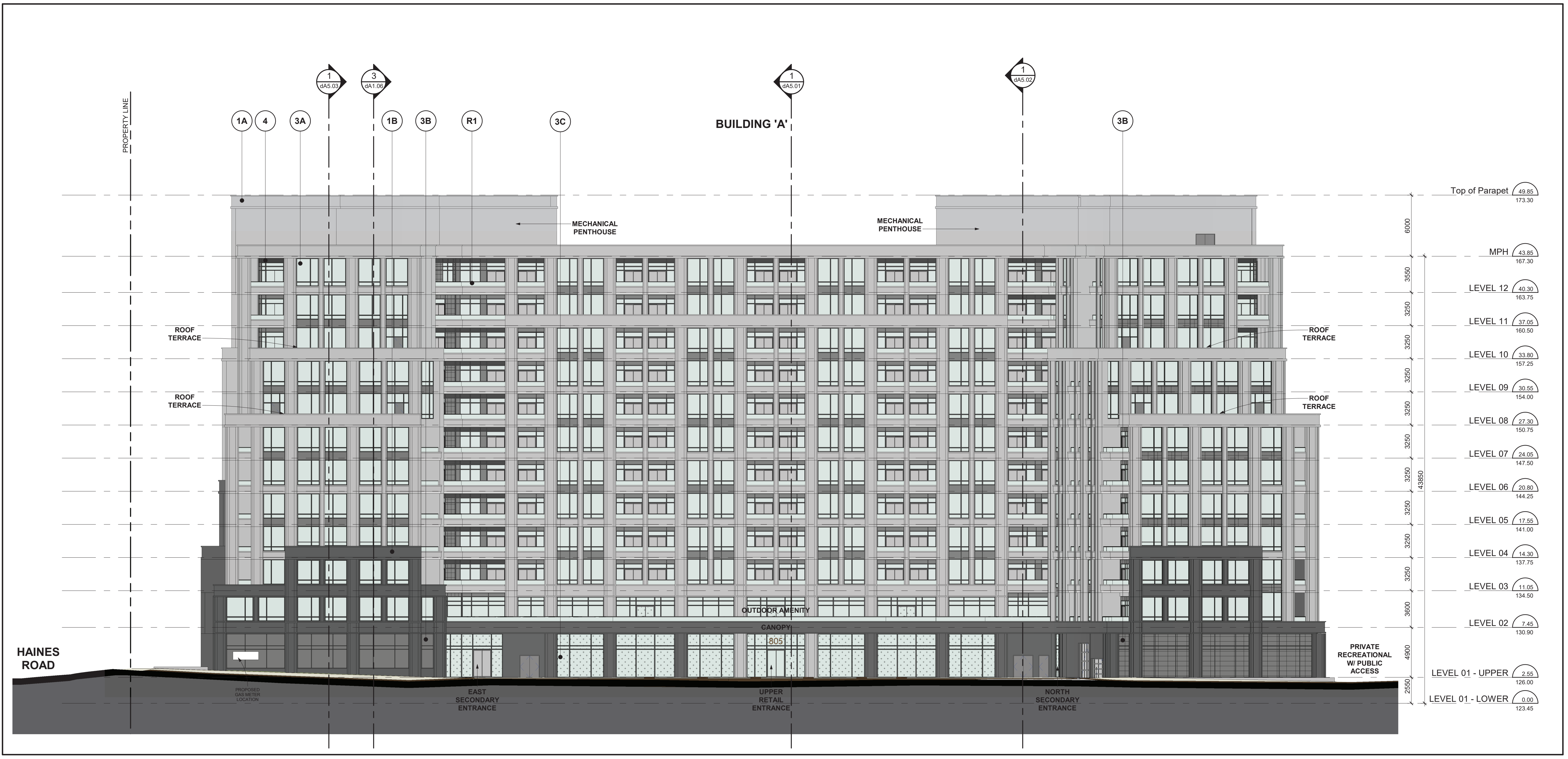
21115 - 805 DUNDAS STREET EAST

- 1A** ARCHITECTURAL PRE-CAST CONCRETE PANEL  
COLOUR : LIGHT  
MANUFACTURER : RES PRECAST INC.  
STYLE : SANDBLASTED
- 1B** ARCHITECTURAL PRE-CAST CONCRETE PANEL  
COLOUR : DARK  
MANUFACTURER : RES PRECAST INC.  
STYLE : SANDBLASTED
- 2** ARCHITECTURAL BRICK MASONRY  
COLOUR : DARK  
MANUFACTURER : -  
STYLE : MODULAR
- 3A** PREFINISHED WINDOW WALL SYSTEM - VISION PANEL  
GLAZING : CLEAR  
MANUFACTURER : GUARDIAN SUNGUARD  
FRAMING : ALUMINUM
- 3B** PREFINISHED WINDOW WALL SYSTEM - GLASS SPANDREL PANEL  
GLASS COLOUR : #3-4595 GRAY THORN - VITRO CLEAR 6MM  
MANUFACTURER : OPACI-COAT-300  
FRAMING : ALUMINUM
- 3C** PREFINISHED WINDOW WALL SYSTEM - FRITTED VISION PANEL  
GLAZING : BIRD1st ETCH 21  
MANUFACTURER : GUARDIAN SUNGUARD  
FRAMING : ALUMINUM

- 4** PREFINISHED WINDOW WALL - METAL PANELS / MULLION  
COLOUR : DARK  
MANUFACTURER : -  
METAL PANEL : PREFINISHED ALUMINUM
- 5** PREFINISHED WINDOW WALL - METAL PANELS  
COLOUR : COPPER  
MANUFACTURER : -  
METAL PANEL : PREFINISHED ALUMINUM
- 6** MECHANICAL LOUVERS  
COLOUR : TO MATCH  
MANUFACTURER : -
- 7A** PREFINISHED CANOPY  
COLOUR : COPPER  
MANUFACTURER : -  
METAL PANEL : PREFINISHED ALUMINUM
- 7B** PREFINISHED CANOPY  
COLOUR : LIGHT  
MANUFACTURER : -  
METAL PANEL : PREFINISHED ALUMINUM
- 8** ROOF - SOFFIT WITH ROOF SHINGLE  
COLOUR : DARK  
MANUFACTURER : -

- 9A** PREFINISHED METAL ROOFING  
COLOUR : LIGHT  
MANUFACTURER : -  
METAL PANEL : ALUMINUM
- 9B** PREFINISHED METAL ROOFING  
COLOUR : DARK  
MANUFACTURER : -  
METAL PANEL : ALUMINUM
- 10A** PREFINISHED LOADING DOOR  
COLOUR : TO MATCH  
MANUFACTURER : -
- 10B** TOWNHOUSE GARAGE DOOR  
COLOUR : DARK  
MANUFACTURER : -  
GLASS TYPE : TRANSLUCENT
- 11** TOWNHOUSE ENTRY DOOR  
COLOUR : COPPER  
MANUFACTURER : -
- R1** RAILING W/ TINTED GLASS AND SLAB COVERS  
MATERIAL : PREFINISHED ALUMINUM  
GLASS TYPE : TEMPERED

Exterior Finish Legend **2**  
NTS **dA4.02**



North Elevation **1**  
1 : 200 **dA4.02**

All Drawings, Specifications, and Related Documents are the Copyright of the Architect. The Architect retains all rights to control all uses of these documents for the intended issuance/use as identified below. Reproduction of these Documents, without permission from the Architect, is strictly prohibited. The Authorities Having Jurisdiction are permitted to use, distribute, and reproduce these drawings for the intended issuance as noted and dated below, however the extended permission to the Authorities Having Jurisdiction in no way debases or limits the Copyright of the Architect, or control of use of these documents by the Architect.

Do not scale the drawings.  
This Drawing is Not To Be Used For Construction Until Signed By The Architect.  
Date:

**KIRKOR**  
ARCHITECTS AND PLANNERS

20 De Boers Drive Suite 400  
Toronto, ON M3J 0H1

No.	Revision	Date

2	Rezoning Re-submission	June 23, 2023
1	Rezoning Submission	Oct. 31, 2022

Client: **KJC PROPERTIES INC.**  
805 Dundas Street East, Mississauga, ON.  
Proposed Residential Development

Drawing Title: **Elevations - Condominium**  
Scale: **1 : 200**  
Drawn by: **S.Y.**  
Checked by: **D.S.**  
Project No.: **21-115**  
Date: **JUNE 22, 2023**  
Drawing No.:

**dA4.02**

**EXTERIOR FINISH LEGEND**

21115 - 805 DUNDAS STREET EAST

- 1A** ARCHITECTURAL PRE-CAST CONCRETE PANEL  
COLOUR : LIGHT  
MANUFACTURER : RES PRECAST INC.  
STYLE : SANDBLASTED
- 1B** ARCHITECTURAL PRE-CAST CONCRETE PANEL  
COLOUR : DARK  
MANUFACTURER : RES PRECAST INC.  
STYLE : SANDBLASTED
- 2** ARCHITECTURAL BRICK MASONRY  
COLOUR : DARK  
MANUFACTURER : -  
STYLE : MODULAR
- 3A** PREFINISHED WINDOW WALL SYSTEM - VISION PANEL  
GLAZING : CLEAR  
MANUFACTURER : GUARDIAN SUNGUARD  
FRAMING : ALUMINUM
- 3B** PREFINISHED WINDOW WALL SYSTEM - GLASS SPANDREL PANEL  
GLASS COLOUR : #3-4595 GRAY THORN - VITRO CLEAR 6MM  
MANUFACTURER : OPACI-COAT-300  
FRAMING : ALUMINUM
- 3C** PREFINISHED WINDOW WALL SYSTEM - FRITTED VISION PANEL  
GLAZING : BIRD1st ETCH 21  
MANUFACTURER : GUARDIAN SUNGUARD  
FRAMING : ALUMINUM

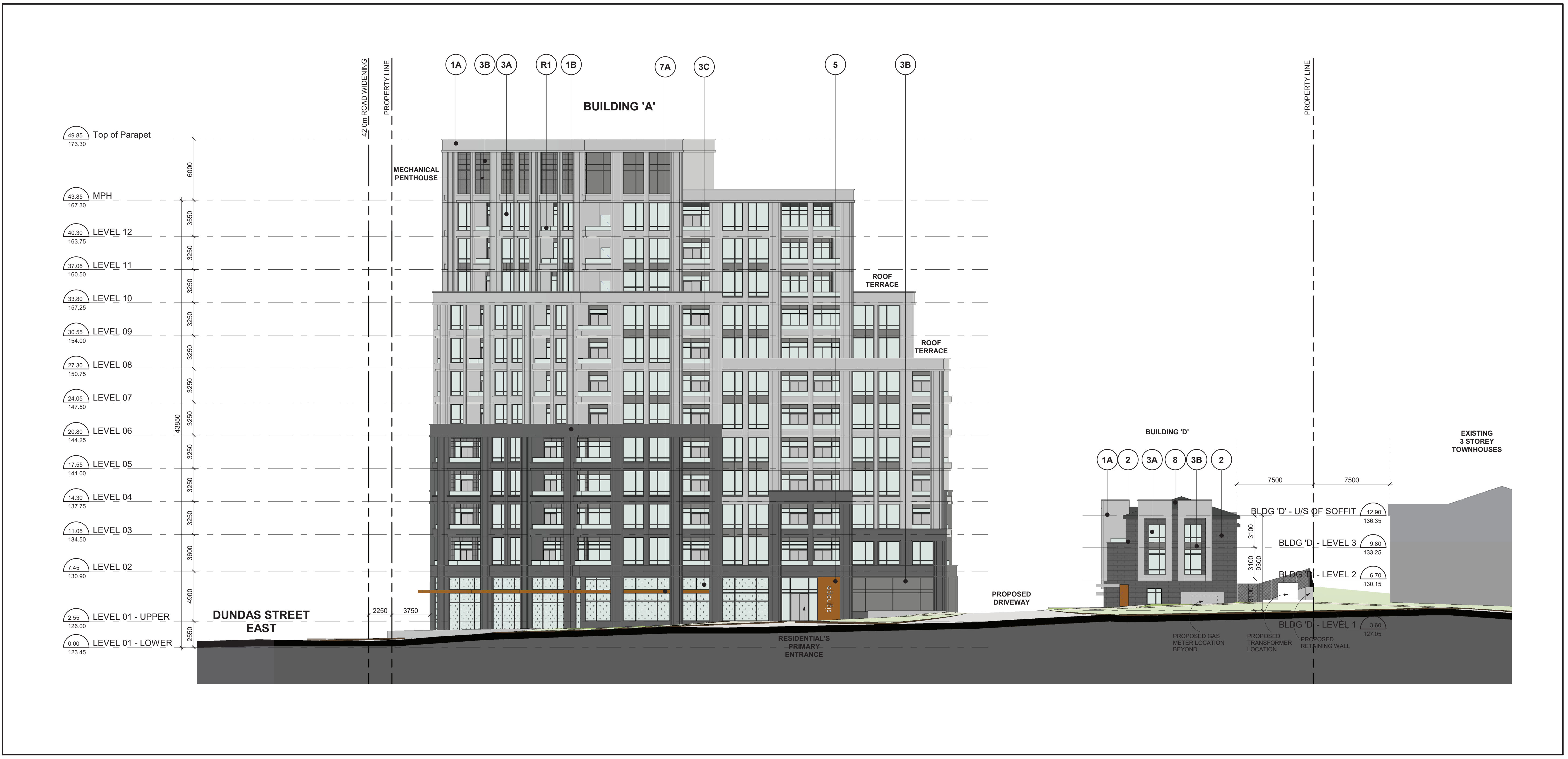
- 4** PREFINISHED WINDOW WALL - METAL PANELS / MULLION  
COLOUR : DARK  
MANUFACTURER : -  
METAL PANEL : PREFINISHED ALUMINUM
- 5** PREFINISHED WINDOW WALL - METAL PANELS  
COLOUR : COPPER  
MANUFACTURER : -  
METAL PANEL : PREFINISHED ALUMINUM
- 6** MECHANICAL LOUVERS  
COLOUR : TO MATCH  
MANUFACTURER : -
- 7A** PREFINISHED CANOPY  
COLOUR : COPPER  
MANUFACTURER : -  
METAL PANEL : PREFINISHED ALUMINUM
- 7B** PREFINISHED CANOPY  
COLOUR : LIGHT  
MANUFACTURER : -  
METAL PANEL : PREFINISHED ALUMINUM
- 8** ROOF - SOFFIT WITH ROOF SHINGLE  
COLOUR : DARK  
MANUFACTURER : -

- 9A** PREFINISHED METAL ROOFING  
COLOUR : LIGHT  
MANUFACTURER : -  
METAL PANEL : ALUMINUM
- 9B** PREFINISHED METAL ROOFING  
COLOUR : DARK  
MANUFACTURER : -  
METAL PANEL : ALUMINUM
- 10A** PREFINISHED LOADING DOOR  
COLOUR : TO MATCH  
MANUFACTURER : -
- 10B** TOWNHOUSE GARAGE DOOR  
COLOUR : DARK  
MANUFACTURER : -  
GLASS TYPE : TRANSLUCENT
- 11** TOWNHOUSE ENTRY DOOR  
COLOUR : COPPER  
MANUFACTURER : -
- R1** RAILING W/ TINTED GLASS AND SLAB COVERS  
MATERIAL : PREFINISHED ALUMINUM  
GLASS TYPE : TEMPERED

Exterior Finish Legend **2**  
NTS **dA4.03**

All Drawings, Specifications, and Related Documents are the Copyright of the Architect. The Architect retains all rights to control all uses of these documents for the intended issuance/use as identified below. Reproduction of these Documents, without permission from the Architect, is strictly prohibited. The Authorities Having Jurisdiction are permitted to use, distribute, and reproduce these drawings for the intended issuance as noted and dated below, however the extended permission to the Authorities Having Jurisdiction in no way debases or limits the Copyright of the Architect, or control of use of these documents by the Architect.

Do not scale the drawings.  
This Drawing is Not To Be Used For Construction Until Signed By The Architect.  
Date:



East Elevation **1**  
1 : 200 **dA4.03**

**KIRKOR**  
ARCHITECTS AND PLANNERS

20 De Boers Drive Suite 400  
Toronto, ON M3J 0H1

No.	Revision	Date
2	Rezoning Re-submission	June 23, 2023
1	Rezoning Submission	Oct. 31, 2022

No.	Issued For:	Date:

Client:  
**KJC PROPERTIES INC.**  
805 Dundas Street East, Mississauga, ON.  
Proposed Residential Development

Drawing Title:  
**Elevations - Condominium**

Scale:  
**1 : 200**  
Drawn by:  
**S.Y.**  
Checked by:  
**D.S.**  
Project No.:  
**21-115**  
Date:  
**JUNE 22, 2023**  
Drawing No.:

**dA4.03**

Plot Date: 6/23/2023 9:10:01 AM File Path: C:\Users\2023\21115\21115\21115\21115.dwg Plot Date: 6/23/2023 9:10:01 AM File Path: C:\Users\2023\21115\21115\21115.dwg

**EXTERIOR FINISH LEGEND**

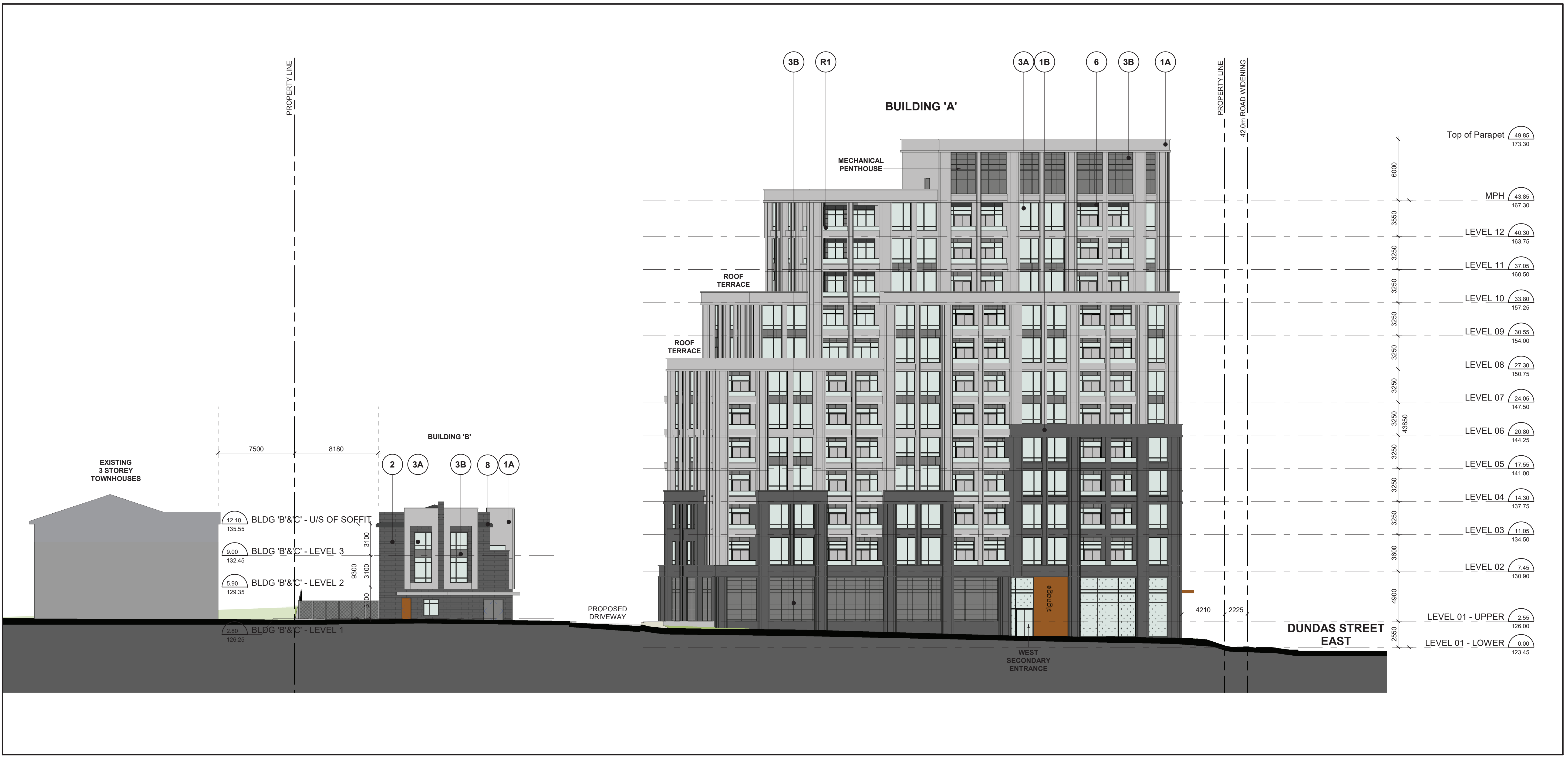
21115 - 805 DUNDAS STREET EAST

- 1A** ARCHITECTURAL PRE-CAST CONCRETE PANEL  
COLOUR : LIGHT  
MANUFACTURER : RES PRECAST INC.  
STYLE : SANDBLASTED
- 1B** ARCHITECTURAL PRE-CAST CONCRETE PANEL  
COLOUR : DARK  
MANUFACTURER : RES PRECAST INC.  
STYLE : SANDBLASTED
- 2** ARCHITECTURAL BRICK MASONRY  
COLOUR : DARK  
MANUFACTURER : -  
STYLE : MODULAR
- 3A** PREFINISHED WINDOW WALL SYSTEM - VISION PANEL  
GLAZING : CLEAR  
MANUFACTURER : GUARDIAN SUNGUARD  
FRAMING : ALUMINUM
- 3B** PREFINISHED WINDOW WALL SYSTEM - GLASS SPANDREL PANEL  
GLASS COLOUR : #3-4595 GRAY THORN - VITRO CLEAR 6MM  
MANUFACTURER : OPACI-COAT-300  
FRAMING : ALUMINUM
- 3C** PREFINISHED WINDOW WALL SYSTEM - FRITTED VISION PANEL  
GLAZING : BIRD1st ETCH 21  
MANUFACTURER : GUARDIAN SUNGUARD  
FRAMING : ALUMINUM

- 4** PREFINISHED WINDOW WALL - METAL PANELS / MULLION  
COLOUR : DARK  
MANUFACTURER : -  
METAL PANEL : PREFINISHED ALUMINUM
- 5** PREFINISHED WINDOW WALL - METAL PANELS  
COLOUR : COPPER  
MANUFACTURER : -  
METAL PANEL : PREFINISHED ALUMINUM
- 6** MECHANICAL LOUVERS  
COLOUR : TO MATCH  
MANUFACTURER : -
- 7A** PREFINISHED CANOPY  
COLOUR : COPPER  
MANUFACTURER : -  
METAL PANEL : PREFINISHED ALUMINUM
- 7B** PREFINISHED CANOPY  
COLOUR : LIGHT  
MANUFACTURER : -  
METAL PANEL : PREFINISHED ALUMINUM
- 8** ROOF - SOFFIT WITH ROOF SHINGLE  
COLOUR : DARK  
MANUFACTURER : -

- 9A** PREFINISHED METAL ROOFING  
COLOUR : LIGHT  
MANUFACTURER : -  
METAL PANEL : ALUMINUM
- 9B** PREFINISHED METAL ROOFING  
COLOUR : DARK  
MANUFACTURER : -  
METAL PANEL : ALUMINUM
- 10A** PREFINISHED LOADING DOOR  
COLOUR : TO MATCH  
MANUFACTURER : -
- 10B** TOWNHOUSE GARAGE DOOR  
COLOUR : DARK  
MANUFACTURER : -  
GLASS TYPE : TRANSLUCENT
- 11** TOWNHOUSE ENTRY DOOR  
COLOUR : COPPER  
MANUFACTURER : -
- R1** RAILING W/ TINTED GLASS AND SLAB COVERS  
MATERIAL : PREFINISHED ALUMINUM  
GLASS TYPE : TEMPERED

Exterior Finish Legend **2**  
NTS dA4.04



West Elevation **1**  
1 : 200 dA4.04

**KIRKOR**  
ARCHITECTS AND PLANNERS

20 De Boers Drive Suite 400  
Toronto, ON M3J 0H1

No.	Revision	Date

2	Rezoning Re-submission	June 23, 2023
1	Rezoning Submission	Oct. 31, 2022

Client:  
**KJC PROPERTIES INC.**

805 Dundas Street East, Mississauga, ON.  
Proposed Residential Development

Drawing Title:  
**Elevations - Condominium**

Scale:  
**1 : 200**

Drawn by:  
**S.Y.**

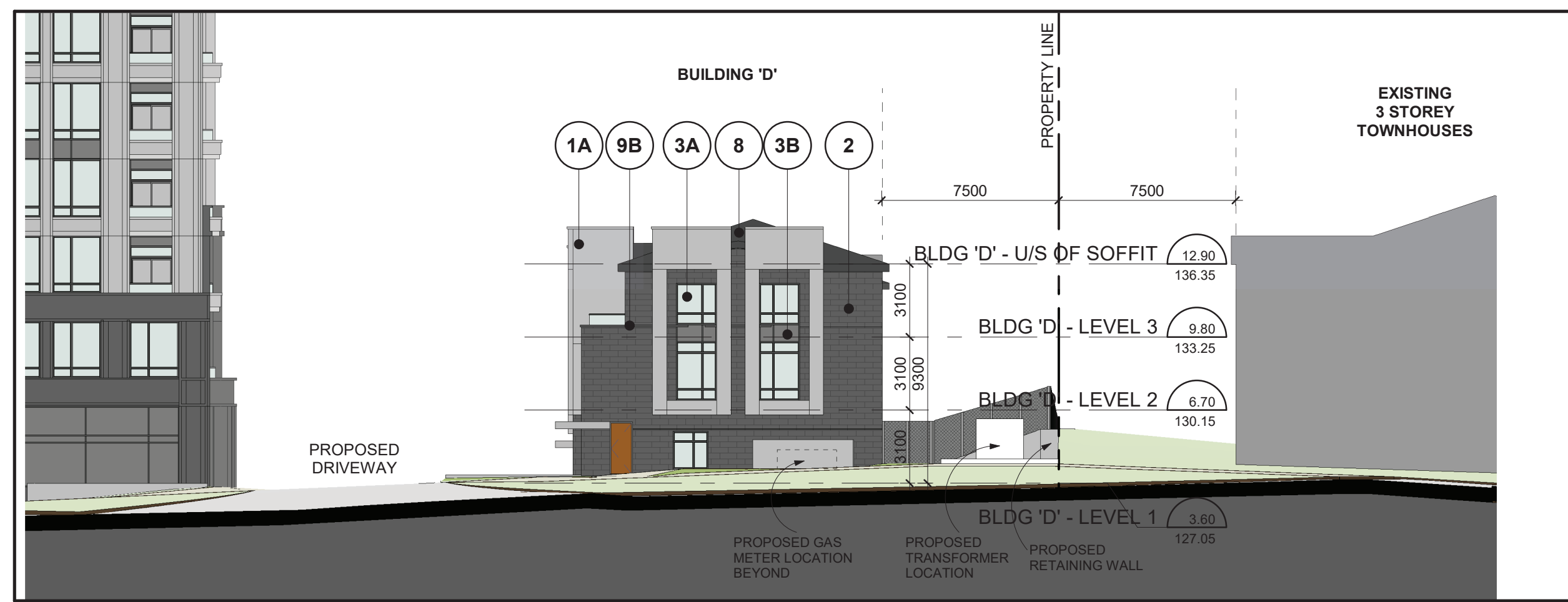
Checked by:  
**D.S.**

Project No.:  
**21-115**

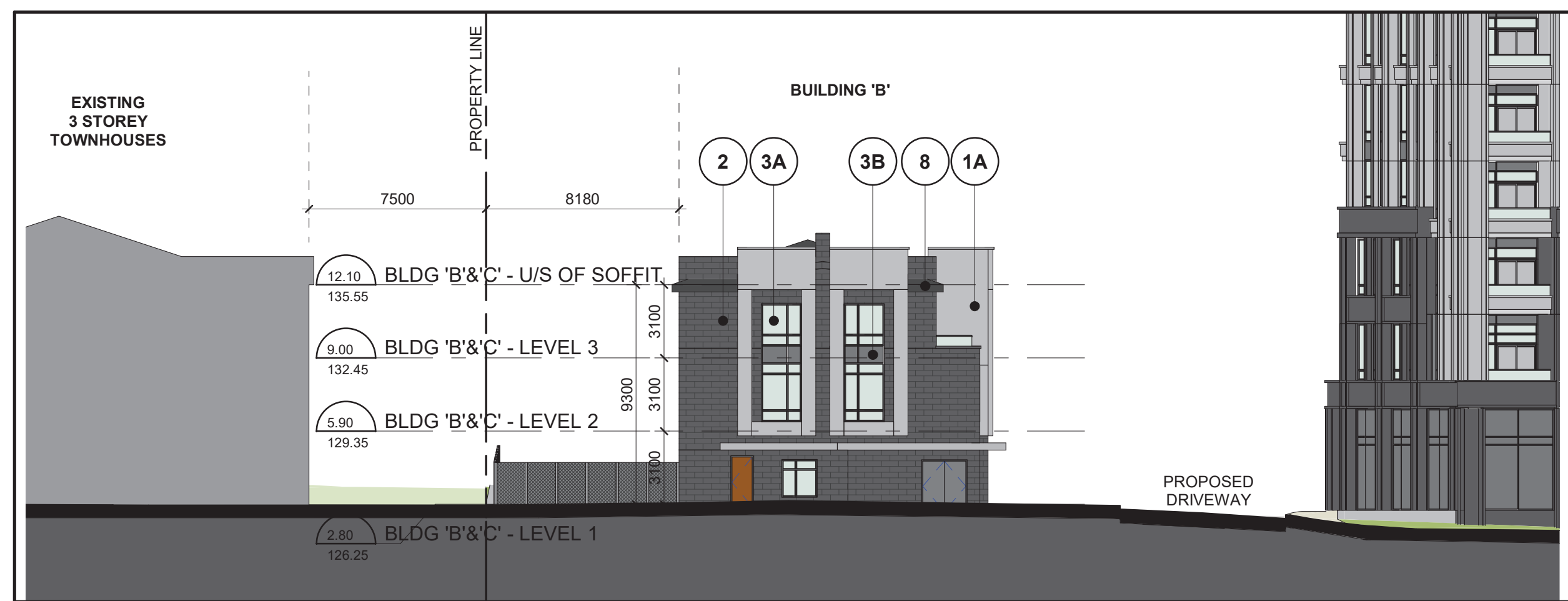
Date:  
**JUNE 22, 2023**

Drawing No.:  
**dA4.04**

**dA4.04**



Townhouse - East Elevation 5  
1 : 200 dA4.05



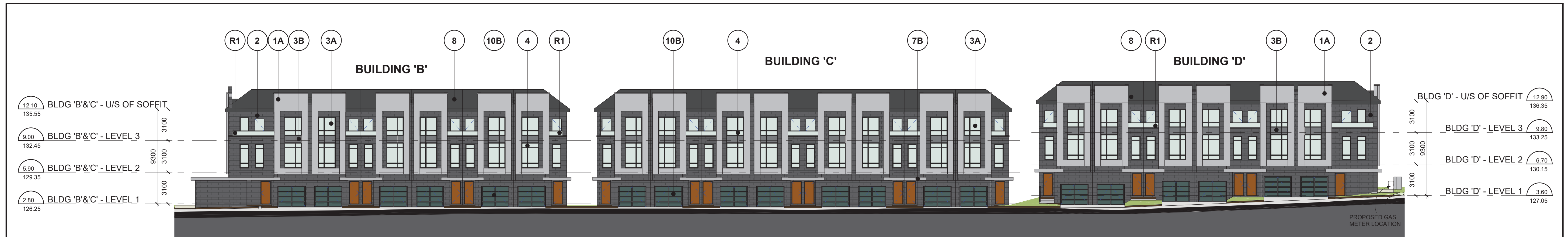
Townhouse - West Elevation 4  
1 : 200 dA4.05

**EXTERIOR FINISH LEGEND**

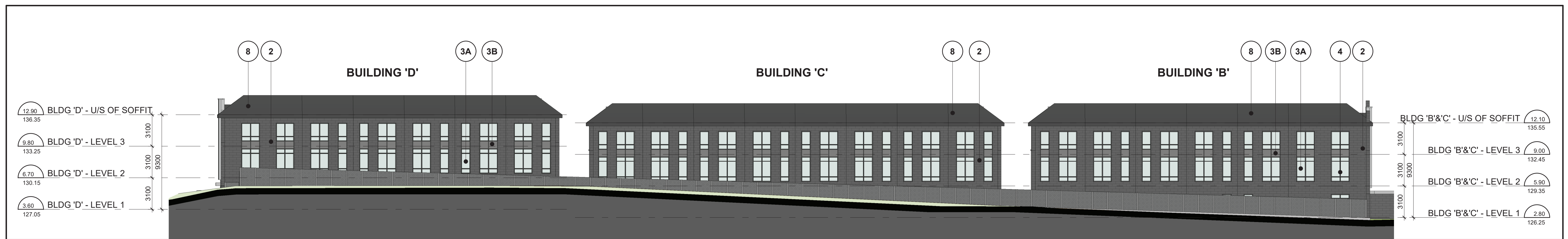
21115 - 805 DUNDAS STREET EAST

- |   |   |  |
|---|---|--|
| <p><b>1A</b> ARCHITECTURAL PRE-CAST CONCRETE PANEL<br/>COLOUR : LIGHT<br/>MANUFACTURER : RES PRECAST INC.<br/>STYLE : SANDBLASTED</p> <p><b>1B</b> ARCHITECTURAL PRE-CAST CONCRETE PANEL<br/>COLOUR : DARK<br/>MANUFACTURER : RES PRECAST INC.<br/>STYLE : SANDBLASTED</p> <p><b>2</b> ARCHITECTURAL BRICK MASONRY<br/>COLOUR : DARK<br/>MANUFACTURER : -<br/>STYLE : MODULAR</p> <p><b>3A</b> PREFINISHED WINDOW WALL SYSTEM - VISION PANEL<br/>GLAZING : CLEAR<br/>MANUFACTURER : GUARDIAN SUNGUARD<br/>FRAMING : ALUMINUM</p> <p><b>3B</b> PREFINISHED WINDOW WALL SYSTEM - GLASS SPANDREL PANEL<br/>GLASS COLOUR : #3-4595 GRAY THORN - VITRO CLEAR 6MM<br/>MANUFACTURER : OPACI-COAT-300<br/>FRAMING : ALUMINUM</p> <p><b>3C</b> PREFINISHED WINDOW WALL SYSTEM - FRITTED VISION PANEL<br/>GLAZING : BIRD1st ETCH 21<br/>MANUFACTURER : GUARDIAN SUNGUARD<br/>FRAMING : ALUMINUM</p> | <p><b>4</b> PREFINISHED WINDOW WALL - METAL PANELS / MULLION<br/>COLOUR : DARK<br/>MANUFACTURER : -<br/>METAL PANEL : PREFINISHED ALUMINUM</p> <p><b>5</b> PREFINISHED WINDOW WALL - METAL PANELS<br/>COLOUR : COPPER<br/>MANUFACTURER : -<br/>METAL PANEL : PREFINISHED ALUMINUM</p> <p><b>6</b> MECHANICAL LOUVERS<br/>COLOUR : TO MATCH<br/>MANUFACTURER : -</p> <p><b>7A</b> PREFINISHED CANOPY<br/>COLOUR : COPPER<br/>MANUFACTURER : -<br/>METAL PANEL : PREFINISHED ALUMINUM</p> <p><b>7B</b> PREFINISHED CANOPY<br/>COLOUR : LIGHT<br/>MANUFACTURER : -<br/>METAL PANEL : PREFINISHED ALUMINUM</p> <p><b>8</b> ROOF - SOFFIT WITH ROOF SHINGLE<br/>COLOUR : DARK<br/>MANUFACTURER : -</p> | <p><b>9A</b> PREFINISHED METAL ROOFING<br/>COLOUR : LIGHT<br/>MANUFACTURER : -<br/>METAL PANEL : ALUMINUM</p> <p><b>9B</b> PREFINISHED METAL ROOFING<br/>COLOUR : DARK<br/>MANUFACTURER : -<br/>METAL PANEL : ALUMINUM</p> <p><b>10A</b> PREFINISHED LOADING DOOR<br/>COLOUR : TO MATCH<br/>MANUFACTURER : -</p> <p><b>10B</b> TOWNHOUSE GARAGE DOOR<br/>COLOUR : DARK<br/>MANUFACTURER : -<br/>GLASS TYPE : TRANSLUCENT</p> <p><b>11</b> TOWNHOUSE ENTRY DOOR<br/>COLOUR : COPPER<br/>MANUFACTURER : -</p> <p><b>R1</b> RAILING W/ TINTED GLASS AND SLAB COVERS<br/>MATERIAL : PREFINISHED ALUMINUM<br/>GLASS TYPE : TEMPERED</p> |
|---|---|--|

Exterior Finish Legend 3  
NTS dA4.05



Townhouse - Overall South Elevation 2  
1 : 200 dA4.05



Townhouse - Overall North Elevation 1  
1 : 200 dA4.05

All Drawings, Specifications, and Related Documents are the Copyright of the Architect. The Architect retains all rights to control all uses of these documents for the intended issuance/use as identified below. Reproduction of these Documents, without permission from the Architect, is strictly prohibited. The Authorities Having Jurisdiction are permitted to use, distribute, and reproduce these drawings for the intended issuance as noted and dated below, however the extended permission to the Authorities Having Jurisdiction in no way debases or limits the Copyright of the Architect, or control of use of these documents by the Architect.

Do not scale the drawings.  
This Drawing is Not To Be Used For Construction Until Signed By The Architect.

Date:



20 De Boers Drive Suite 400  
Toronto, ON M3J 0H1

Revisions:

No.	Revision:	Date:

2	Rezoning Re-submission	June 23, 2023
1	Rezoning Submission	Oct. 31, 2022

No.	Issued For:	Date:

Client:  
**KJC PROPERTIES INC.**

805 Dundas Street East, Mississauga, ON.  
Proposed Residential Development

Drawing Title:  
**Elevations - Townhouses**

Scale:  
1 : 200  
Drawn by:  
S.Y.  
Checked by:  
D.S.  
Project No.:  
21-115  
Date:  
JUNE 22, 2023  
Drawing No.:

**dA4.05**



All Drawings, Specifications, and Related Documents are the Copyright of the Architect. The Architect retains all rights to control all uses of these documents for the intended issuance/use as identified below. Reproduction of these Documents, without permission from the Architect, is strictly prohibited. The Authorities Having Jurisdiction are permitted to use, distribute, and reproduce these drawings for the intended issuance as noted and dated below, however the extended permission to the Authorities Having Jurisdiction in no way debases or limits the Copyright of the Architect, or control of use of these documents by the Architect.

Do not scale the drawings.  
This Drawing is Not To Be Used For Construction Until Signed By The Architect.

Date:



20 De Boers Drive Suite 400  
Toronto, ON M3J 0H1

Revisions:  
No. Revision Date

No. Issued For Date

No. Issued For Date

No. Issued For Date

No. Issued For Date

No. Issued For Date

No. Issued For Date

No. Issued For Date

No. Issued For Date

No. Issued For Date

No. Issued For Date

No. Issued For Date

No. Issued For Date

No. Issued For Date

No. Issued For Date

No. Issued For Date

No. Issued For Date

No. Issued For Date

No. Issued For Date

No. Issued For Date

No. Issued For Date

No. Issued For Date

No. Issued For Date

No. Issued For Date

No. Issued For Date

No. Issued For Date

No. Issued For Date

No. Issued For Date

No. Issued For Date

No. Issued For Date

No. Issued For Date

No. Issued For Date

No. Issued For Date

No. Issued For Date

No. Issued For Date

No. Issued For Date

No. Issued For Date

No. Issued For Date

No. Issued For Date

No. Issued For Date

No. Issued For Date

No. Issued For Date

No. Issued For Date

No. Issued For Date

No. Issued For Date

No. Issued For Date

No. Issued For Date

No. Issued For Date

No. Issued For Date

No. Issued For Date

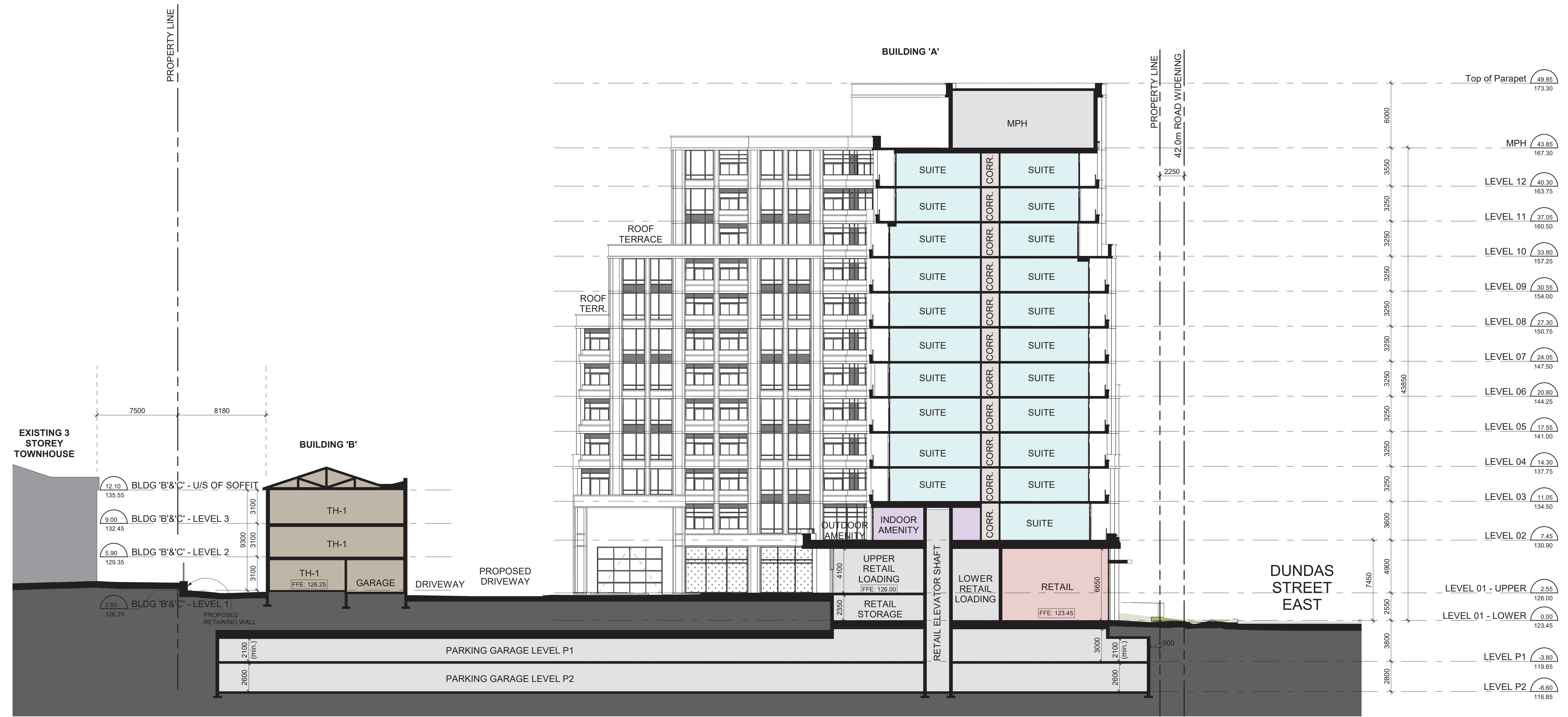
No. Issued For Date

No. Issued For Date

No. Issued For Date

No. Issued For Date

No. Issued For Date



Building Section 'B' 1  
1 : 200 dA5.02

Client:  
**KJC PROPERTIES INC.**

805 Dundas Street East, Mississauga, ON.  
Proposed Residential Development

Drawing Title:  
**Building Section 'B'**

Scale:  
**1 : 200**  
Drawn by:  
**G.H.**  
Checked by:  
**D.S.**  
Project No.:  
**21-115**  
Date:  
**JUNE 22, 2023**  
Drawing No.:

**dA5.02**

Plot Date: 6/23/2023 9:10:34 AM File Path: C:\Users\3201\111921\_205\_Dundas Street East.dwg Plot Date: 6/23/2023 9:10:34 AM









South West View - Along Dundas Street East 4  
 NTS dA7.01



South East View - Along Dundas Street East 3  
 NTS dA7.01



Private Terrace 2  
 NTS dA7.01



East View - Townhouse Front Overall 1  
 NTS dA7.01

All Drawings, Specifications, and Related Documents are the Copyright of the Architect. The Architect retains all rights to control all uses of these documents for the intended issuance/use as identified below. Reproduction of these Documents, without permission from the Architect, is strictly prohibited. The Authorities Having Jurisdiction are permitted to use, distribute, and reproduce these drawings for the intended issuance as noted and dated below, however the extended permission to the Authorities Having Jurisdiction in no way debases or limits the Copyright of the Architect, or control of use of these documents by the Architect.

Do not scale the drawings.  
 This Drawing is Not To Be Used For Construction Until Signed By The Architect.

Date:

**KIRKOR**  
 ARCHITECTS AND PLANNERS

20 De Boers Drive Suite 400  
 Toronto, ON M3J 0H1

Revisions:		
No.:	Revision:	Date:

2	Rezoning Re-submission	June 23, 2023
1	Rezoning Submission	Oct. 31, 2022

No. : Issued For: Date:

Client:  
**KJC PROPERTIES INC.**

805 Dundas Street East, Mississauga, ON.  
 Proposed Residential Development

Drawing Title:  
**Perspective Views**

Scale:  
 Drawn by:  
**S.Y.**  
 Checked by:  
**D.S.**  
 Project No.:  
**21-115**  
 Date:  
**JUNE 22, 2023**  
 Drawing No.:

**dA7.01**



East View - Primary Residential Entrance Along Haines Road 4  
NTS dA7.02



South View - Lower Retail Entrance Along Dundas Street East 2  
NTS dA7.02



North East View - Upper Retail Entrance at Parking 3  
NTS dA7.02



North West View - Upper Retail Entrance at Parking 1  
NTS dA7.02

JUNE 22, 2023

All Drawings, Specifications, and Related Documents are the Copyright of the Architect. The Architect retains all rights to control all uses of these documents for the intended issuance/use as identified below. Reproduction of these Documents, without permission from the Architect, is strictly prohibited. The Authorities Having Jurisdiction are permitted to use, distribute, and reproduce these drawings for the intended issuance as noted and dated below, however the extended permission to the Authorities Having Jurisdiction in no way debases or limits the Copyright of the Architect, or control of use of these documents by the Architect.

Do not scale the drawings.  
This Drawing is Not To Be Used For Construction Until Signed By The Architect.

Date:

**KIRKOR**  
ARCHITECTS AND PLANNERS

20 De Boers Drive Suite 400  
Toronto, ON M3J 0H1

Revisions:		Date:
No.:	Revision:	Date:

2	Rezoning Re-submission	June 23, 2023
1	Rezoning Submission	Oct. 31, 2022

No.:	Issued For:	Date:
------	-------------	-------

Client:  
**KJC PROPERTIES INC.**

**805 Dundas Street East, Mississauga, ON.**  
Proposed Residential Development

Drawing Title:  
**Perspective Views**

Scale:  
Drawn by:  
**S.Y.**  
Checked by:  
**D.S.**  
Project No.:  
**21-115**  
Date:  
**JUNE 22, 2023**  
Drawing No.:

**dA7.02**