

GENERAL NOTES

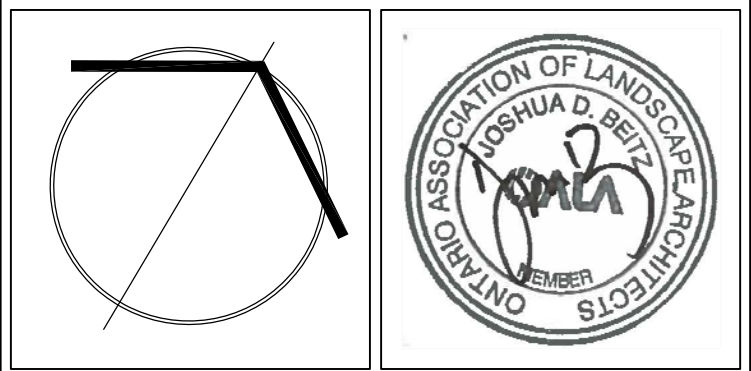
- VERIFY ALL DIMENSIONS.
- DO NOT SCALE DRAWINGS.
- REPORT ANY DISCREPANCIES, DISCOVERED ERRORS, OR OMISSIONS TO THE LANDSCAPE ARCHITECT BEFORE PROCEEDING.
- IT IS ADVISED THAT CONTRACTORS CONTACT THE LANDSCAPE ARCHITECT PRIOR TO CONSTRUCTION TO ENSURE THE USE OF THE LATEST REVISED DRAWINGS.
- DRAWINGS AND SPECIFICATIONS ARE THE PROPERTY OF THE LANDSCAPE ARCHITECT.

KEY MAP



No.	DATE	REVISION	BY
4.	2023-06-22	ISSUED FOR RESUBMISSION	JOB
3.	2022-11-08	ISSUED FOR REZONING SUBMISSION	JOB
2.	2022-08-30	ISSUED FOR REVIEW	JOB
1.	2022-07-22	VOID ISSUED FOR COORDINATION	M.G.

It is the responsibility of the Contractor and/or Owner to ensure that the drawings with the latest revisions are used for construction.



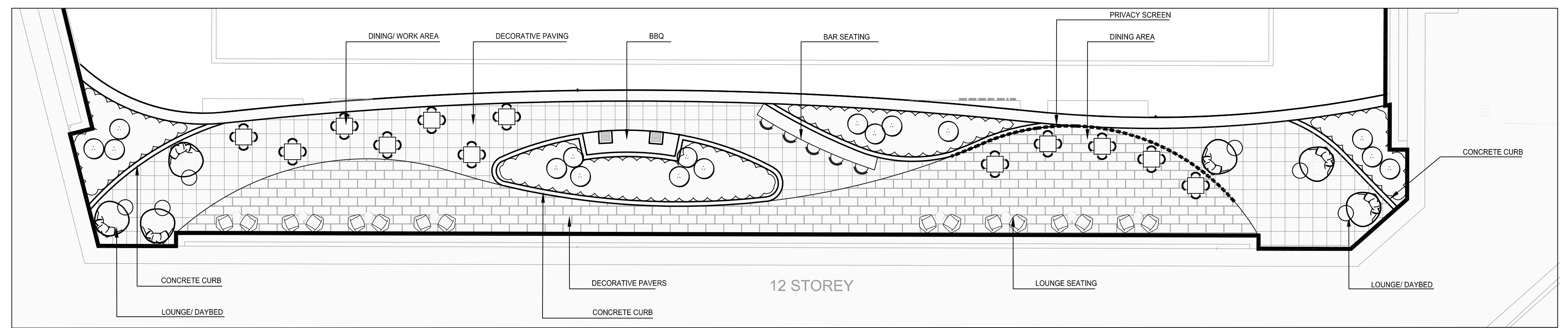
SBK 5770 HURONTARIO STREET, SUITE 320
 MISSISSAUGA, ONTARIO, L5R 3G5
 T: 416.695.4949 F: 905.712.3101
 WWW.STRYBOS.COM

STRYBOS BARRON KING
 LANDSCAPE ARCHITECTURE

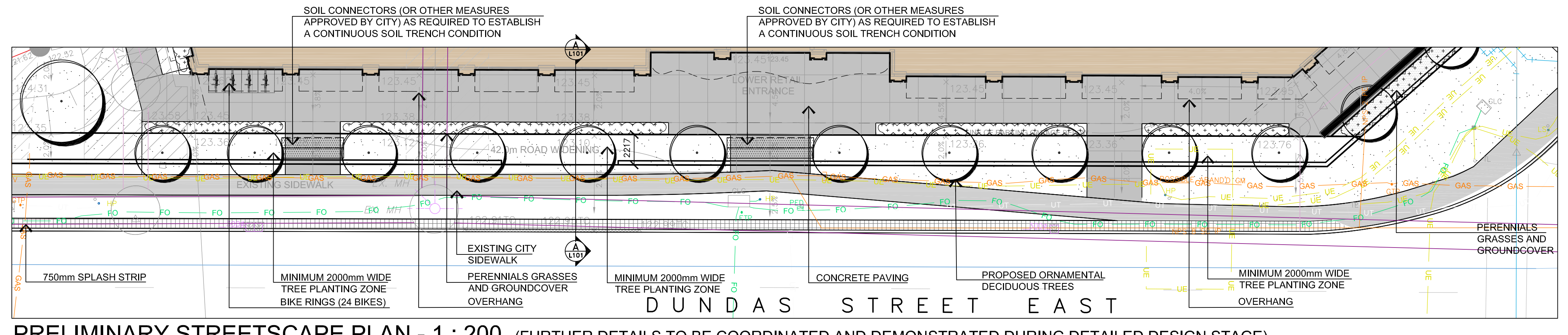
PROJECT:
PROPOSED MIXED-USE DEVELOPMENT
 805 DUNDAS STREET E
 MISSISSAUGA, ON

DRAWING TITLE:
LANDSCAPE CONCEPT PLAN (COMPOSITE)

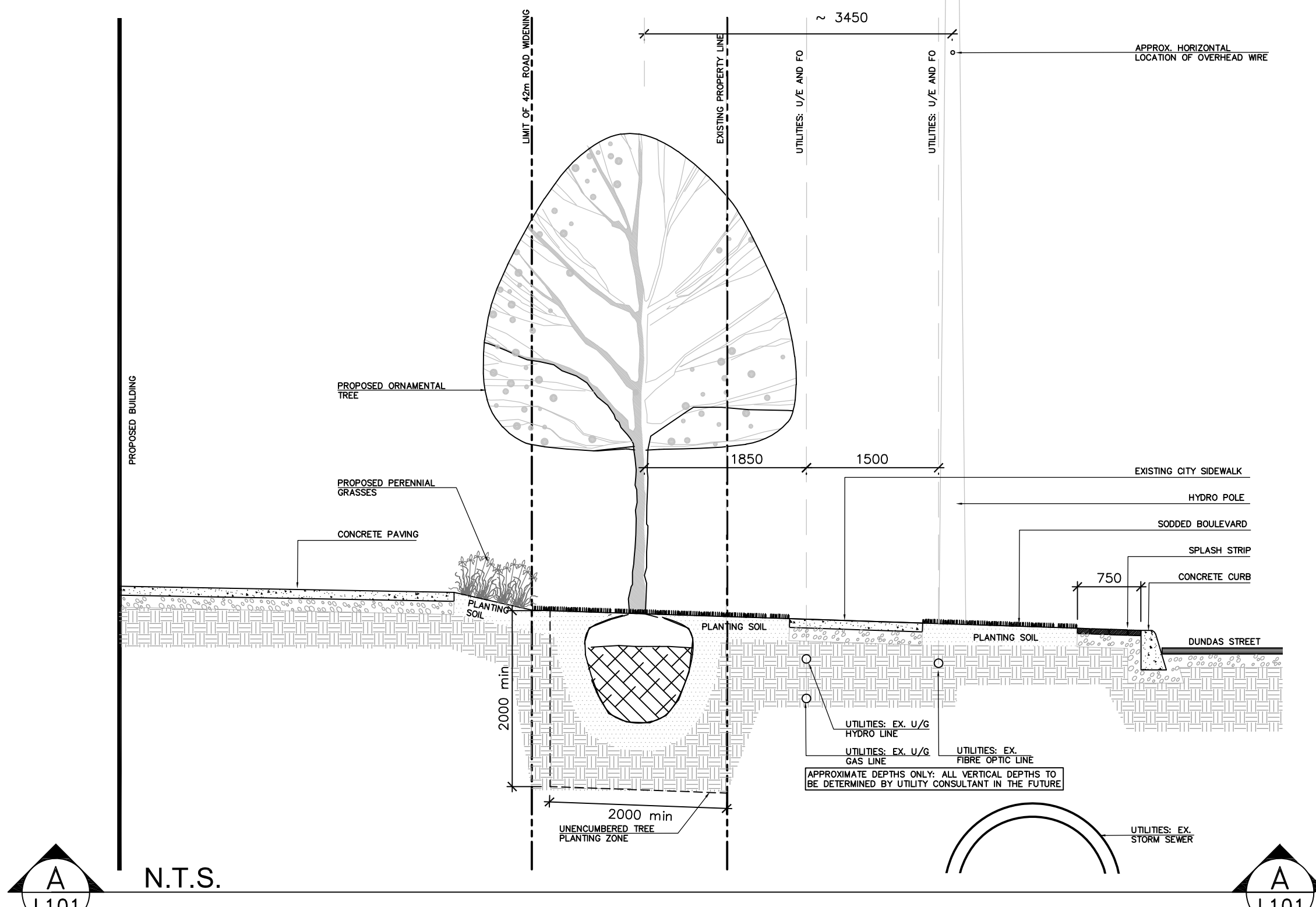
SCALE: 1:250	PROJECT No. 5788
DATE: JUNE 15 2022	
DRAWN BY: S.D.	DRAWING No.
CHECKED BY: J.B.	L100



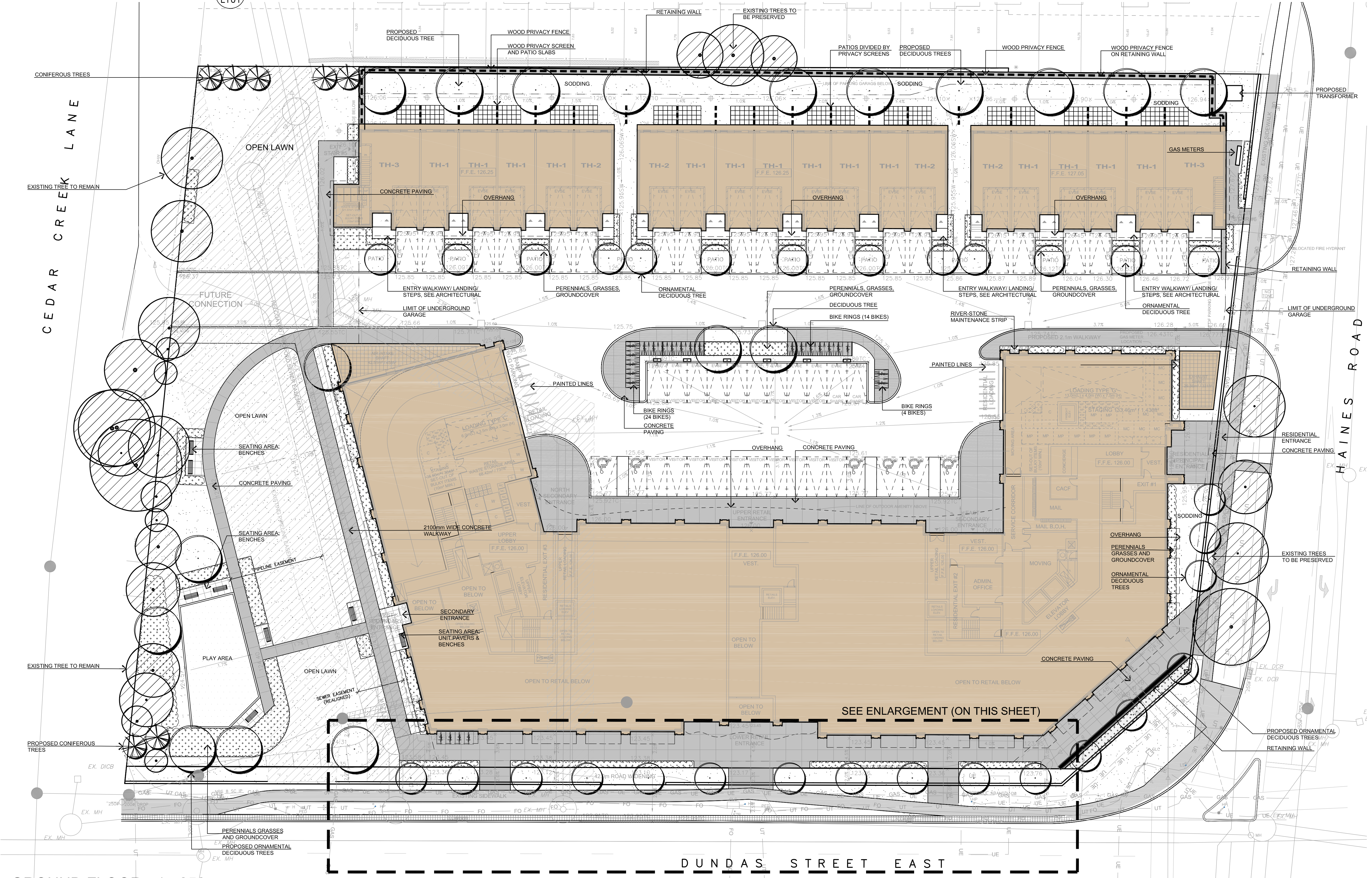
2nd FLOOR AMENITY AREA - 1:125



PRELIMINARY STREETSCAPE PLAN - 1:200 (FURTHER DETAILS TO BE COORDINATED AND DEMONSTRATED DURING DETAILED DESIGN STAGE)



N.T.S.



GROUND FLOOR - 1:250

GENERAL NOTES

- VERIFY ALL DIMENSIONS.
- DO NOT SCALE DRAWINGS.
- REPORT ANY DISCREPANCIES, DISCOVERED ERRORS, OR OMISSIONS TO THE LANDSCAPE ARCHITECT BEFORE PROCEEDING.
- IT IS ADVISED THAT CONTRACTORS CONTACT THE LANDSCAPE ARCHITECT PRIOR TO CONSTRUCTION TO ENSURE THE USE OF THE LATEST REVISED DRAWINGS.
- DRAWINGS AND SPECIFICATIONS ARE THE PROPERTY OF THE LANDSCAPE ARCHITECT.

KEY MAP



KEY MAP LEGEND

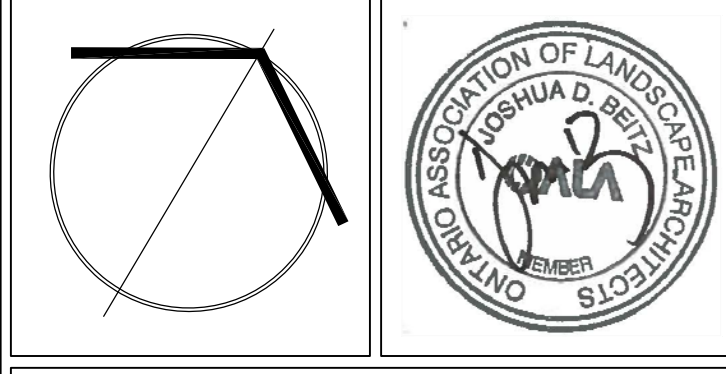
- EXISTING TREE TO REMAIN
- PROPOSED DECIDUOUS TREE
- PROPOSED CONIFEROUS TREE
- PROPOSED PERENNIALS AND GRASSES AND GROUNDCOVER
- SODDING
- WOOD PRIVACY FENCE
- METAL FENCE
- BENCH
- PLAY AREA
- BIKE PARKING/RING

SERVICING LEGEND

- IN ENLARGEMENT**
- FO EXISTING FIBRE OPTIC LINE
 - UE EXISTING UNDERGROUND HYDRO LINE
 - UT EXISTING UNDERGROUND TELEPHONE LINE
 - GAS EXISTING UNDERGROUND GAS LINE
 - EXISTING WATERMAIN
 - EXISTING STORM SEWER

No.	DATE	REVISION	BY
4.	2023-06-22	ISSUED FOR RESUBMISSION	JOB
3.	2022-11-08	ISSUED FOR REZONING SUBMISSION	JOB
2.	2022-08-30	ISSUED FOR REVIEW	JOB
1.	2022-07-22	V100 ISSUED FOR COORDINATION	M.G.

It is the responsibility of the Contractor and/or Owner to ensure that the drawings with the latest revisions are used for construction.



SBK 5770 HURONTARIO STREET, SUITE 320
MISSISSAUGA, ONTARIO, L5R 3Z5
T: 416.695.4949 F: 905.712.3101
WWW.STRYBOS.COM

STRYBOS BARRON KING
LANDSCAPE ARCHITECTURE

PROJ. NO. 5788

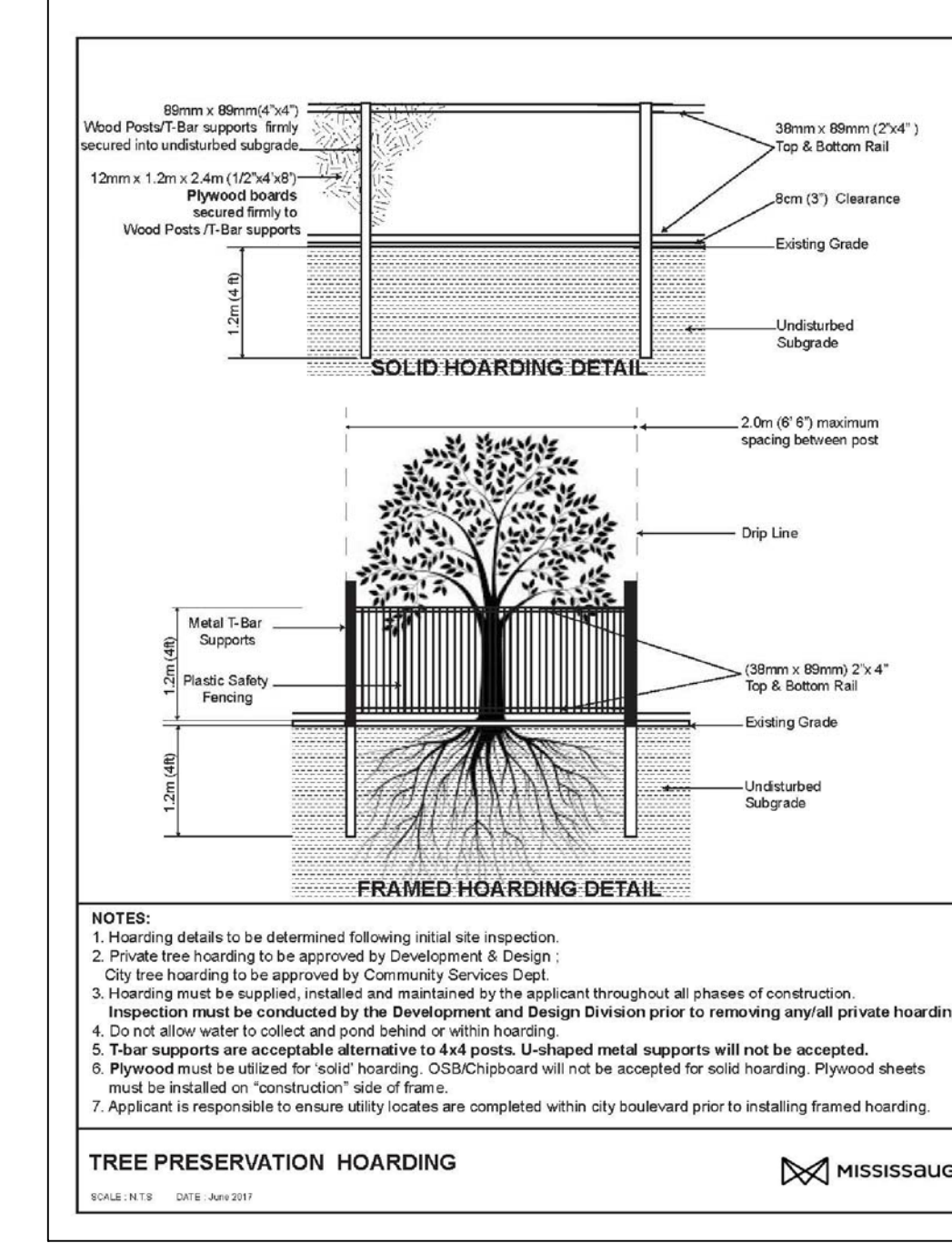
PROPOSED MIXED-USE DEVELOPMENT

805 DUNDAS STREET E
MISSISSAUGA, ON

DRAWING TITLE: PRELIMINARY LANDSCAPE CONCEPT PLAN (GROUND FLOOR AND 2nd FLOOR AMENITY)

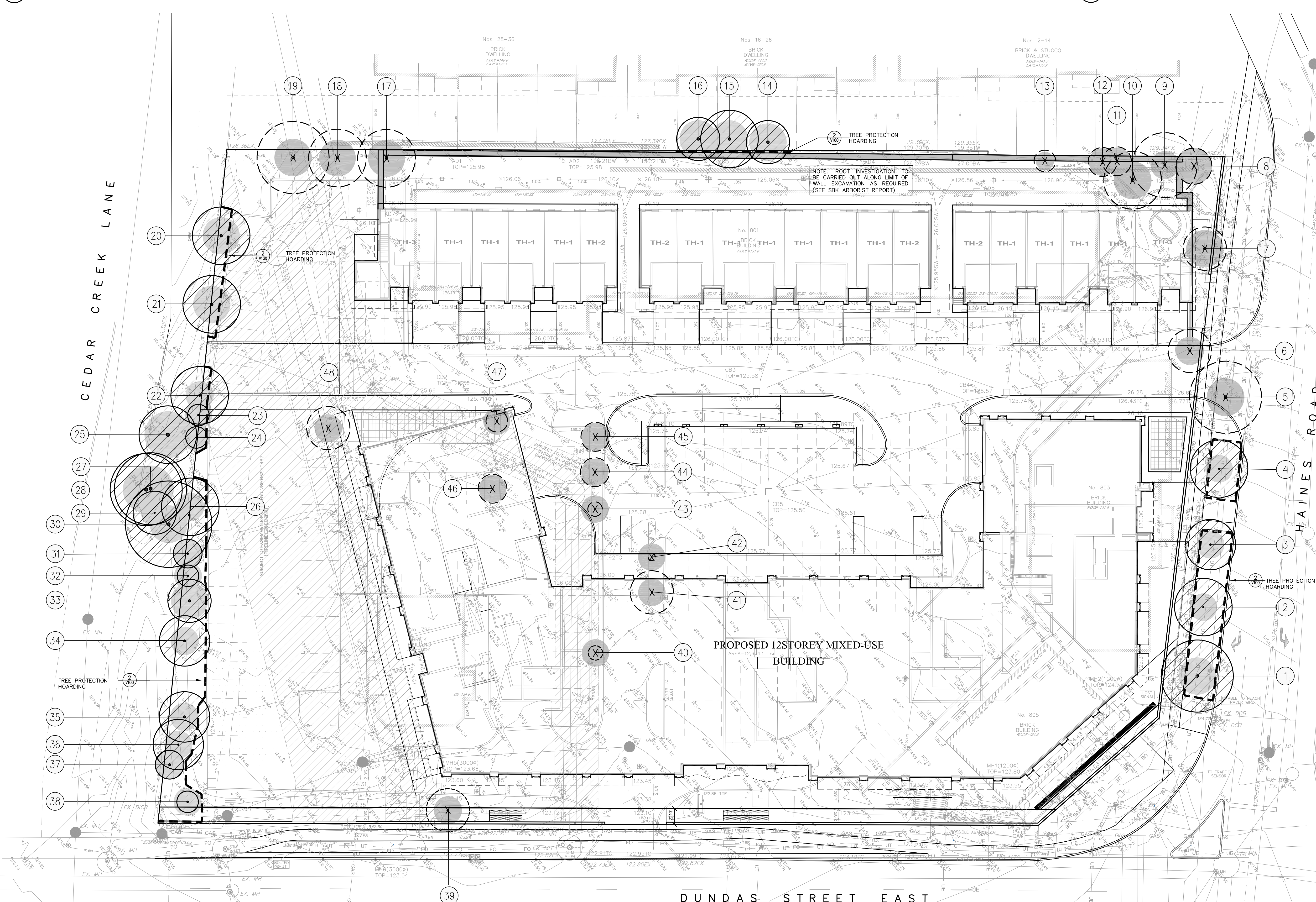
SCALE: AS SHOWN	PROJECT No. 5788
DATE: JUNE 15 2022	
DRAWN BY: S.D.	DRAWING No. L101
CHECKED BY: J.B.	

EXISTING TREE INVENTORY												EXISTING TREE INVENTORY											
KEY SPECIES	DBH (centimetres)	CROWN (metres)	HEALTH/ CONDITION	STRUCTURE	COMMENTS	DIRECTION	OWNERSHIP	MIN. TPZ	KEY	KEY SPECIES	DBH (centimetres)	CROWN (metres)	HEALTH/ CONDITION	STRUCTURE	COMMENTS	DIRECTION	OWNERSHIP	MIN. TPZ	KEY				
1 Siberian Elm	34	10	Good	Symmetrical	Street tree, minor die back, leaf damage (insect / disease)	PRESERVE	CITY	2.4	1	34 Norway Maple	28	7	Fair	Onesided	Crowded by adjacent tree minor dieback	PRESERVE	PRIVATE	1.8	34				
2 Siberian Elm	11-17	8	Good	Multi-stem	Street tree, minor dieback, leaf damage (insect / disease)	PRESERVE	CITY	1.8	2	36 Norway Maple	26	7	Fair	Onesided	Crowded by adjacent tree minor dieback	PRESERVE	PRIVATE	1.8	35				
3 Siberian Elm	23	7	Good	Onesided	Street tree, minor dieback, leaf damage (insect / disease)	PRESERVE	CITY	1.8	3	35 White Spruce	21	3	Fair	Onesided	Crowded by adjacent tree minor dieback	PRESERVE	PRIVATE	1.8	36				
4 Siberian Elm	14-17	8	Fair	Symmetrical	Street tree, minor dieback, leaf damage (insect / disease) open wound on stem	PRESERVE	CITY	1.8	4	37 White Spruce	27	4	Fair	Columnar	Broken leader, crowded by adjacent tree, minor dieback	PRESERVE	PRIVATE	1.8	37				
5 Siberian Elm	39	10	Fair	Symmetrical	Street tree, minor dieback, leaf damage (insect / disease)	REMOVE	CITY	2.4	5	38 White Spruce	23	3	Fair	Narrow Form	Street tree, minor die back, raised canopy leaning	PRESERVE	PRIVATE	1.8	38				
6 Norway Maple	27	6	Poor	Narrow Form	Boulevard tree, major dieback in canopy, damage to bark	REMOVE	PRIVATE	1.8	6	39 Fruit tree	27	6	Fair	Good Form	Street tree, major dieback, dead leader, damaged lower branches, damage to bark	REMOVE	PRIVATE	1.8	39				
7 Norway Maple	34	6	Fair	Narrow Form	Some twig tip dieback throughout	REMOVE	PRIVATE	2.4	7	40 Ginkgo	16	2	Poor	Narrow Form	Island tree, minor dieback, dead leader, damaged lower branches, damage to bark	REMOVE	PRIVATE	1.8	40				
8 White ash	18	5	Fair	Onesided	Crowded by adjacent tree, adjacent to fence	REMOVE	PRIVATE	1.8	8	41 Ginkgo	19	6	Poor	Narrow Form	Island tree, minor dieback, dead leader, damaged lower branch	REMOVE	PRIVATE	1.8	41				
9 Black locust	25	9	Fair	Symmetrical	Crowded by adjacent tree, adjacent to fence, minor dieback in canopy	REMOVE	PRIVATE	1.8	9	42 Ginkgo	14	1	Poor	Narrow Form	No leader, damage to bark, almost dead	REMOVE	EXEMPT	1.8	42				
10 Australian pine	40	8	Good	Onesided	Crowded by adjacent tree, adjacent to fence	REMOVE	PRIVATE	2.4	10	43 Ginkgo	17	2	Poor	Narrow Form	Dieback, damaged lower branches	REMOVE	PRIVATE	1.8	43				
11 Black locust	14-16	4	Good	Multi-stem	Crowded by adjacent tree, adjacent to fence	REMOVE	PRIVATE	1.8	11	44 Ginkgo	13	4	Poor	Narrow Form	Island tree, minor dieback, dead leader, damaged lower branch	REMOVE	EXEMPT	1.8	44				
12 Black locust	16	4	Fair	Multi-stem	Crowded by adjacent tree, adjacent to fence, minor dieback in canopy	REMOVE	PRIVATE	1.8	12	45 Ginkgo	18	4	Poor	Narrow Form	Island tree, minor dieback, dead leader, damaged lower branch	REMOVE	PRIVATE	1.8	45				
13 Black locust	<10	3	Good	Multi-stem	Crowded by adjacent tree, adjacent to fence	REMOVE	EXEMPT	1.2	13	46 Honey locust	13	4	Fair	Leaning	Island tree, minor dieback	REMOVE	EXEMPT	1.8	46				
14 Colorado Spruce	35	6	Good	Columnar	Crowded by adjacent tree, adjacent to fence	PRESERVE	NEIGHBOUR	2.4	14	48 Honey locust	11	3	Fair	Symetrical	Island tree, minor dieback	REMOVE	PRIVATE	1.8	48				
15 Colorado Spruce	35	6	Good	Columnar	Crowded by adjacent tree, adjacent to fence	PRESERVE	NEIGHBOUR	2.4	15														
16 Colorado Spruce	35	6	Good	Columnar	Crowded by adjacent tree, adjacent to fence	PRESERVE	NEIGHBOUR	2.4	16														
17 Norway Maple	29	8	Fair	Narrow Form	Adjacent to fence, crowded by overhead wire, minor dieback	REMOVE	PRIVATE	2.4	17														
18 Norway Maple	25	8	Poor	Onesided	Adjacent to fence, crowded by overhead wire, major dieback, peeling bark	REMOVE	PRIVATE	2.4	18														
19 Norway Maple	36	10	Poor	Onesided	Adjacent to fence, crowded by overhead wire, major dieback, peeling bark	REMOVE	PRIVATE	2.4	19														
20 Norway Maple	32	8	Fair	Symetrical	Adjacent to fence, crowded by overhead wire, minor dieback	PRESERVE	PRIVATE	2.4	20														
21 Norway Maple	35	8	Fair	Narrow Form	Adjacent to fence, crowded by overhead wire	PRESERVE	BOUNDARY	2.4	21														
22 Norway Maple	26	8	Fair	Symetrical	Crowded by adjacent tree, adjacent to fence, minor dieback in canopy	PRESERVE	BOUNDARY	1.8	22														
23 White Spruce	20	3	Fair	Columnar	Crowded by adjacent tree, raised canopy, minor dieback in canopy	PRESERVE	BOUNDARY	1.8	23														
24 White Spruce	18	3	Fair	Columnar	Crowded by adjacent tree, raised canopy, minor dieback in canopy	PRESERVE	BOUNDARY	1.8	24														
25 Manitoba Maple	45	8	Poor	Onesided	Thin, major dieback, crowded by adjacent tree	PRESERVE	NEIGHBOUR	3	25														
26 Norway Maple	24	8	Fair	Onesided	Double leader, minor dieback, crowded by adjacent tree	PRESERVE	BOUNDARY	1.8	26														
27 Black locust	42	10	Poor	Narrow Form	Crowded by adjacent tree, dual leader, major dieback	PRESERVE	NEIGHBOUR	3	27														
28 Black locust	44	10	Fair	Narrow Form	Crowded by adjacent tree, dual leader, minor dieback	PRESERVE	NEIGHBOUR	3	28														
29 Manitoba Maple	16	6	Fair	Narrow Form	Crowded by adjacent tree, minor dieback in canopy	PRESERVE	NEIGHBOUR	1.8	29														
30 Manitoba Maple	40	12	Fair	Onesided	Crowded by adjacent tree, minor dieback in canopy	PRESERVE	NEIGHBOUR	2.4	30														
31 White Spruce	22	4	Fair	Narrow Form	Crowded by adjacent tree, raised canopy, minor dieback in canopy	PRESERVE	PRIVATE	1.8	31														
32 White Spruce	19	3	Fair	Narrow Form	Crowded by adjacent tree, raised canopy, minor dieback in canopy	PRESERVE	PRIVATE	1.8	32														
33 White Spruce	30	6	Fair	Narrow Form	Crowded by adjacent tree, raised canopy, minor dieback in canopy	PRESERVE	PRIVATE	2.4	33														



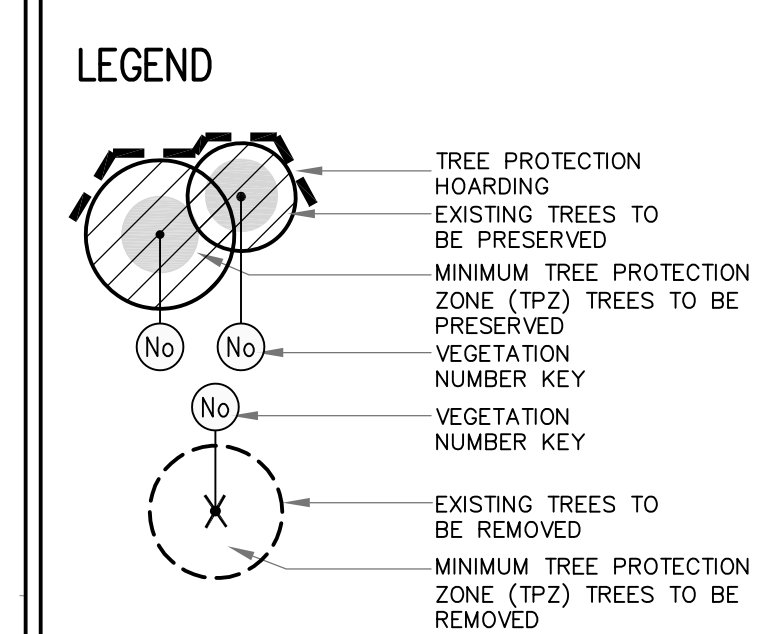
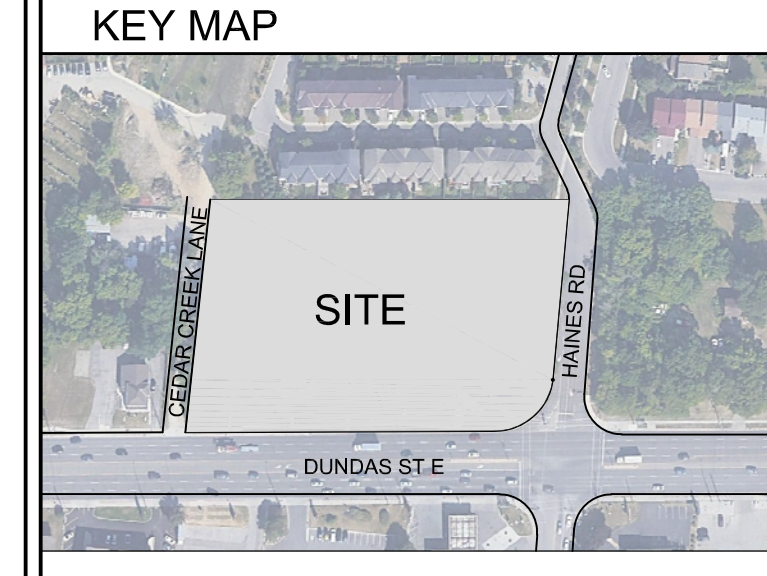
1 TREE INVENTORY

2 TREE PROTECTION HOARDING



GENERAL NOTES

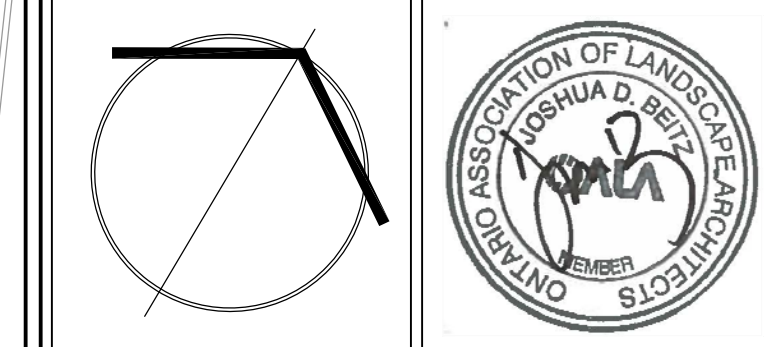
- VERIFY ALL DIMENSIONS.
- DO NOT SCALE DRAWINGS.
- REPORT ANY DISCREPANCIES, DISCOVERED ERRORS, OR OMISSIONS TO THE LANDSCAPE ARCHITECT BEFORE PROCEEDING.
- IT IS ADVISED THAT CONTRACTORS CONTACT THE LANDSCAPE ARCHITECT PRIOR TO CONSTRUCTION TO ENSURE THE USE OF THE LATEST REVISED DRAWINGS.
- DRAWINGS AND SPECIFICATIONS ARE THE PROPERTY OF THE LANDSCAPE ARCHITECT.



Matthew Gheres
MATTHEW GHERES
 INTERNATIONAL SOCIETY OF ARBORICULTURE
 CERTIFIED ARBORIST #OH-1114A
 DATE: JUNE 22, 2023

No.	DATE	REVISION	BY
4.	2023-06-22	ISSUED FOR RESUBMISSION	JOB
3.	2022-11-08	ISSUED FOR REZONING SUBMISSION	JOB
2.	2022-08-30	ISSUED FOR REVIEW	JOB
1.	2022-07-22	V100 ISSUED FOR COORDINATION	M.G.

It is the responsibility of the Contractor and/or Owner to ensure that the drawings with the latest revisions are used for construction.



SBK
 5770 HURONTARIO STREET, SUITE 320
 MISSISSAUGA, ONTARIO, L5R 3Q5
 T: 416.695.4949 F: 905.712.3101
 WWW.STRYBOS.COM

STRYBOS BARRON KING
 LANDSCAPE ARCHITECTURE

PROJECT:

PROPOSED MIXED-USE DEVELOPMENT

805 DUNDAS STREET E
 MISSISSAUGA, ON

DRAWING TITLE:

EXISTING TREE INVENTORY AND PRESERVATION PLAN

SCALE:	1:250	PROJECT No.	
DATE:	JUNE 15 2022	5788	
DRAWN BY:	S.D.	DRAWING No.	
CHECKED BY:	J.B.	V100	