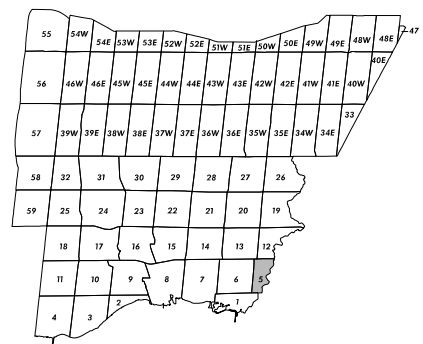


CITY OF TORONTO



Inclusionary Zoning Overlay

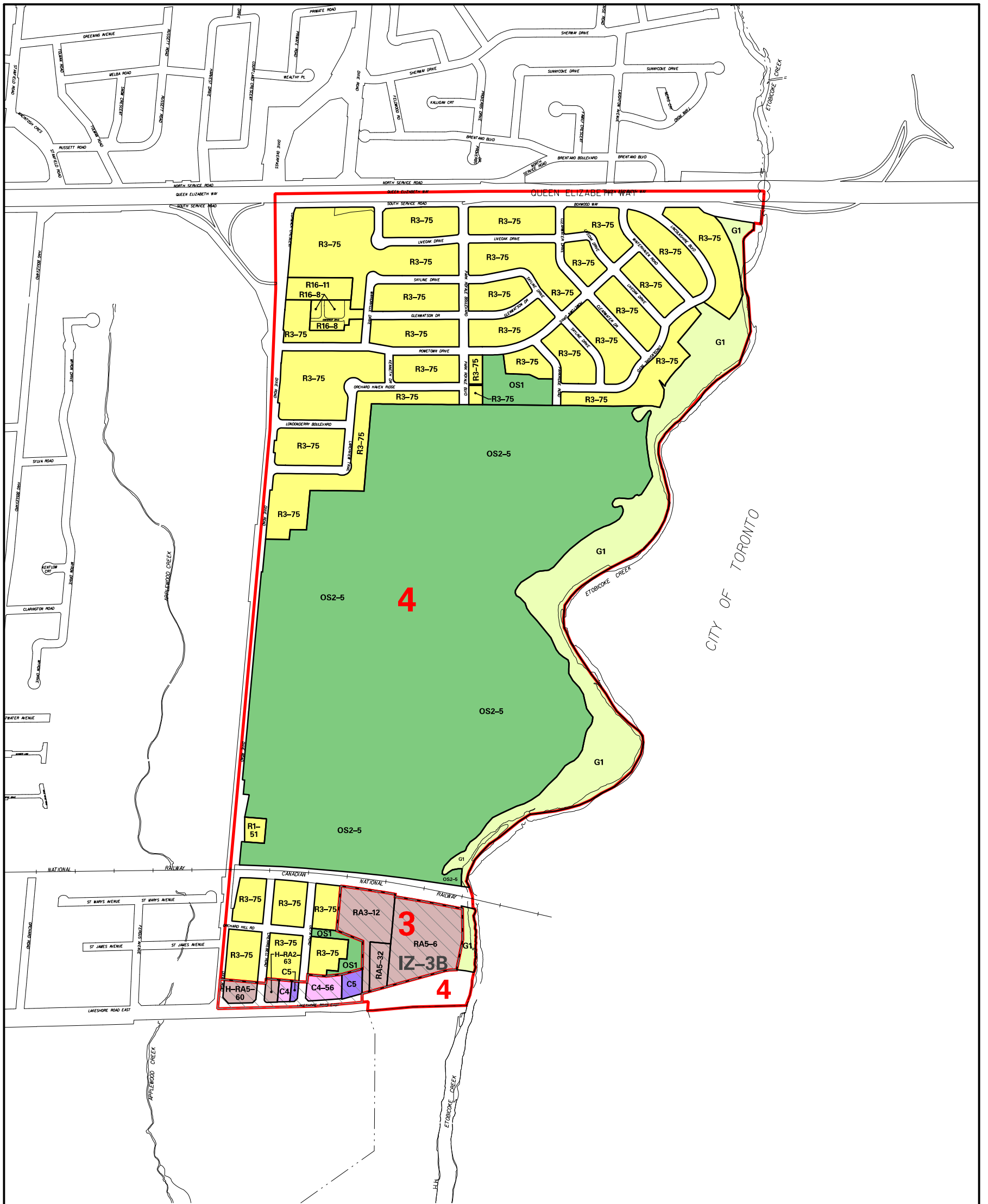
Parking Precinct

Greenlands Overlay

Zoning Notation Example:
R4-12 = R4-Exception 12

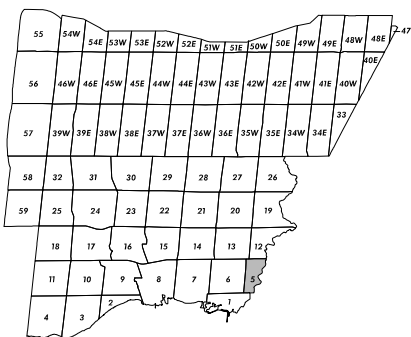
Zoning Map 05

Schedule "B" To
By-law No. 0225-2007
Revised: 2023 September 30



CITY OF TORONTO

6



Inclusionary Zoning Overlay

Parking Precinct

Greenlands Overlay

Zoning Notation Example:
R4-12 = R4-Exception 12

Zoning Map 05

Schedule "B" To
By-law No. 0225-2007

Revised: 2023 September 30

ZONING BY-LAW 0225-2007

ZONING CATEGORIES

ZONES

Residential		R1 - R16	Detached Dwellings
		RM1, RM2, RM3	Semi-Detached
		RM7	Detached, Semi-Detached, Duplex and Triplex
		RM4, RM5, RM6	Townhouse
		RM8 - RM12	Back to Back, Stacked Townhouses
		RA1 - RA5	Apartment, Long-Term Care, Retirement Buildings
Office		O1	Minor Office
		O2	Major Office
		O3	General Office
Commercial		C1	Convenience Commercial
		C2	Neighbourhood Commercial
		C3	General Commercial
		C4	Mainstreet Commercial
		C5	Motor Vehicle Commercial
Downtown Core		CC1	Core Commercial
		CC2, CC4	Mixed Use
		CC3	Mixed Use - Transition Area
		CCO	Office
		CCOS	Open Space
Employment		E1	Employment in Nodes
		E2	Employment
		E3	Industrial
Open Space		OS1	Community Park
		OS2	City Park
		OS3	Cemetery
Greenlands		G1	Natural Hazards
		G2	Natural Features
			Greenlands Overlay
Parkway Belt		PB1, PB2	Parkway Belt
Utility		U	Utility
Institutional		I	Hospital and University / College
Development		D	Existing Use
Buffer		B	Buffer, Berm, Fence
Airport		AP	Lester B. Pearson International Airport