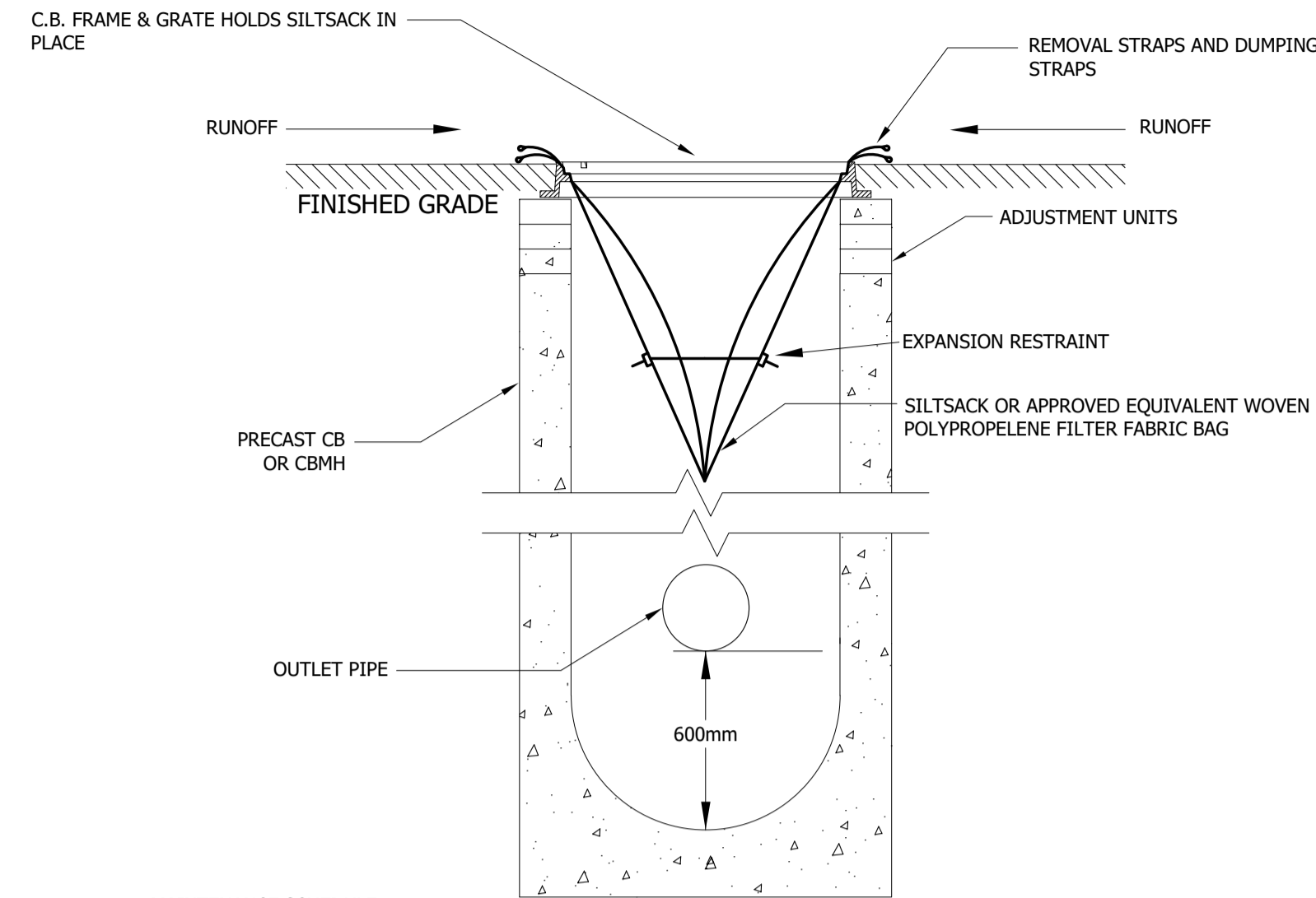


NOTES:

1. GRANULAR MATERIAL IS TO BE CLEAN APPROVED MATERIAL AND PLACED AT NOTED DIMENSIONS PRIOR TO LAND DISTURBANCE
2. GEOTEXTILE IS TO BE PLACED OVER THE ENTIRE AREA PRIOR TO STONE PLACEMENT
3. MAINTENANCE- THE ENTRANCE SHALL BE MAINTAINED IN A CONDITION WHICH WILL REDUCE TRACKING OR FLOWING OF SEDIMENT ONTO THE R.O.W. AND GRANULAR MATERIAL IS TO BE REPLACED AS WARRANTED OR DIRECTED BY THE TRANSPORTATION AND WORKS DEPARTMENT OF THE CITY OF MISSISSAUGA.
4. FOR SITE DEVELOPMENTS GREATER THAN 4.0ha IN SIZE 20m (MIN) IS REQUIRED FOR 50mm CLEAR STONE AND 10m (MIN) IS REQUIRED FOR 150mm RIP-RAF.

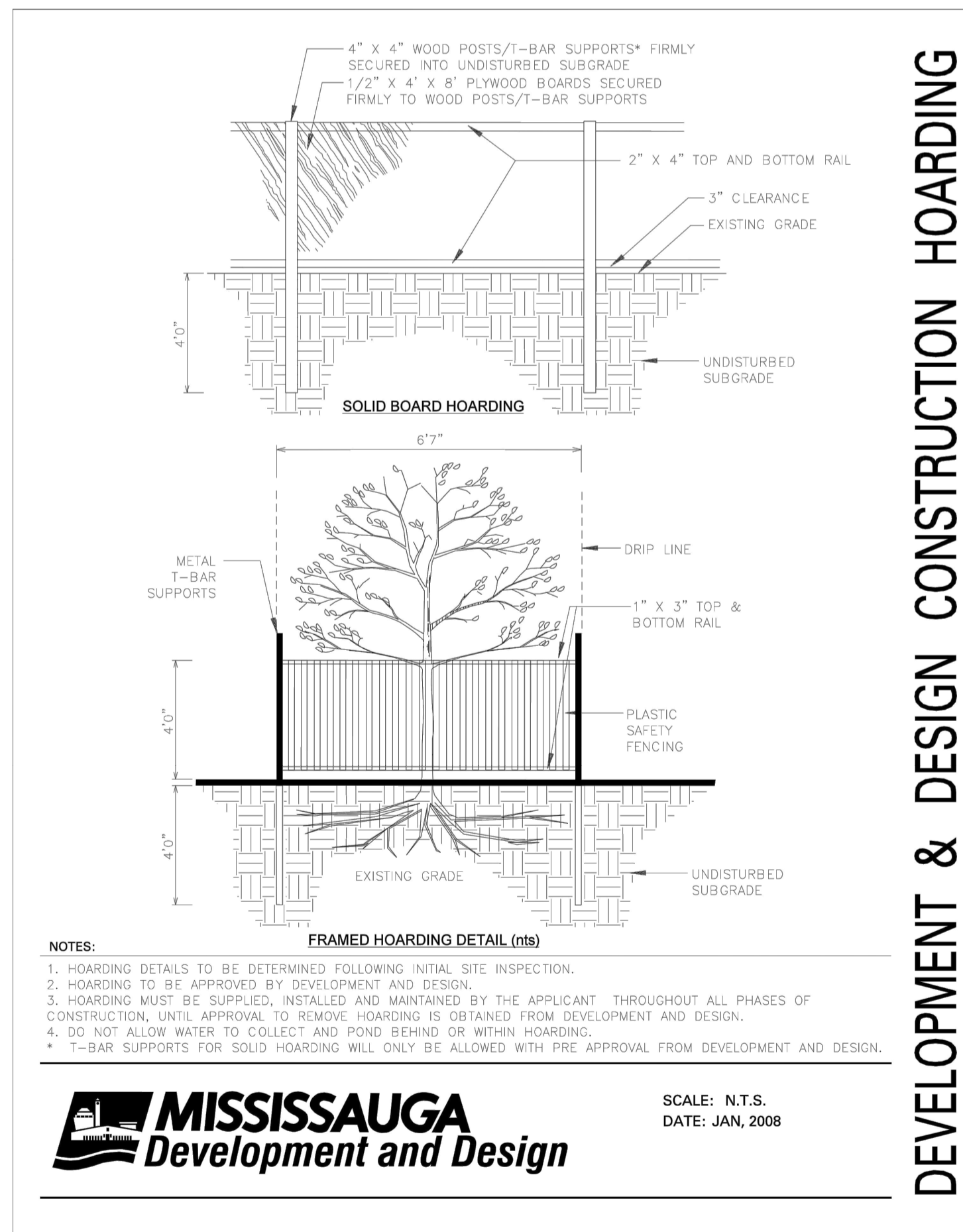
STANDARD STONE PAD CONSTRUCTION ENTRANCE			
EFF. DATE	2002-01-01	SCALE	N.T.S
REV.		STANDARD No.	2970.010



MAINTENANCE SCHEDULE

- INSPECT AFTER EVERY MAJOR RAIN EVENT.
- INSPECT EVERY 3 WEEKS MINIMUM.
- SILTSACK SHOULD NEVER BE OVER HALF FULL.
- FULL BAG CAN BE REMOVED, DUMPED, CLEANED AND REUSED (TO REMOVE INSERT 25mm REBAR INTO REMOVAL FLAP POCKETS)
- (TO DUMP INSERT 25mm REBAR INTO BOTH DUMPING STRAPS)

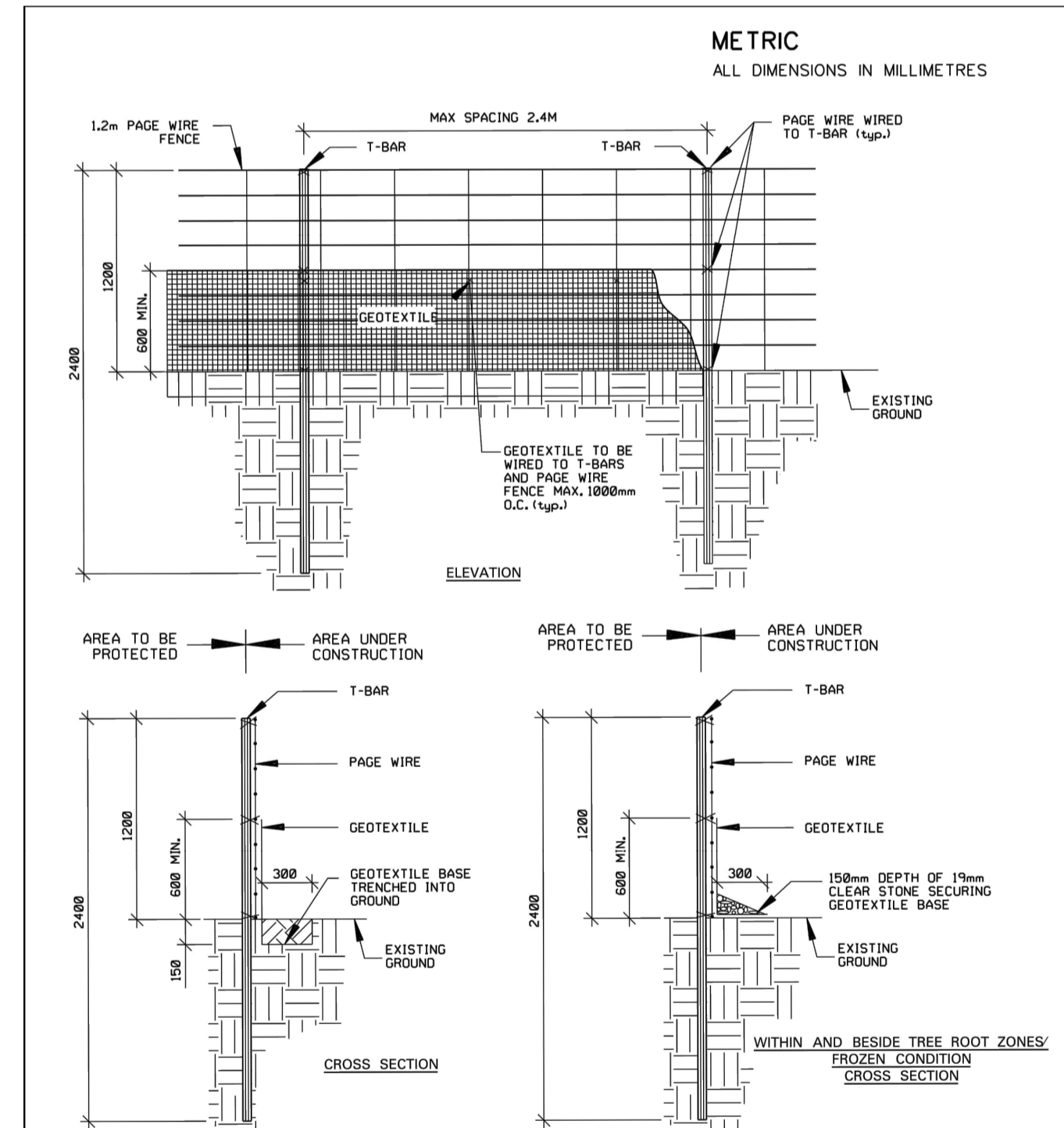
SILTSACK DETAIL
N.T.S.



- NOTES:**
1. HOARDING DETAILS TO BE DETERMINED FOLLOWING INITIAL SITE INSPECTION.
 2. HOARDING TO BE APPROVED BY DEVELOPMENT AND DESIGN.
 3. HOARDING MUST BE SUPPLIED, INSTALLED AND MAINTAINED BY THE APPLICANT THROUGHOUT ALL PHASES OF CONSTRUCTION, UNTIL APPROVAL TO REMOVE HOARDING IS OBTAINED FROM DEVELOPMENT AND DESIGN.
 4. DO NOT ALLOW WATER TO COLLECT AND POND BEHIND OR WITHIN HOARDING.
 - * T-BAR SUPPORTS FOR SOLID HOARDING WILL ONLY BE ALLOWED WITH PRE APPROVAL FROM DEVELOPMENT AND DESIGN.

SCALE: N.T.S.
DATE: JAN, 2008

DEVELOPMENT & DESIGN CONSTRUCTION HOARDING



- NOTES:**
1. ALL DIMENSIONS IN MILLIMETRES UNLESS OTHERWISE NOTED.
 2. IT IS THE CONTRACTOR'S RESPONSIBILITY TO OBTAIN LOCATES OF ALL EXISTING UTILITIES AND SERVICING PRIOR TO INSTALLING HOARDING.
 3. DO NOT DAMAGE VISIBLE TREE ROOTS WHEN INSTALLING T-BARS.
 4. GEOTEXTILE TO WOVEN OR NON WOVEN MINIMUM EQUIVALENT OPENING SIZE IS 0.15mm AND MAXIMUM EQUIVALENT OPENING SIZE IS 0.25mm.
 5. GEOTEXTILE TO HAVE HORIZONTAL OVERLAP OF 1000mm MINIMUM AT JOINTS.
 6. HOARDING MUST BE MAINTAINED IN SOUND CONDITION THROUGH ALL PHASES OF CONSTRUCTION UNTIL APPROVAL TO REMOVE HOARDING IS OBTAINED FROM THE COMMUNITY SERVICES DEPARTMENT.

STANDARD SEDIMENT CONTROL FENCE			
EFF. DATE	2002-01-01	SCALE	N.T.S.
REV.		STANDARD No.	2940.010

BENCHMARK NOTE
ELEVATIONS SHOWN ON THIS PLAN ARE GEODETIC AND ARE REFERRED TO CITY OF MISSISSAUGA BENCHMARK No.688, HAVING AN ELEVATION OF 143.902 METERS
TOPOGRAPHIC SURVEY PREPARED BY LLOYD & PURCELL LTD. ONTARIO LAND SURVEYORS ON OCT.23, 2023.

<input checked="" type="checkbox"/> FIRST SUBMISSION	<input type="checkbox"/> SECOND DATE	<input type="checkbox"/> THIRD DATE	<input type="checkbox"/> FINAL DATE
DATE: NOV. 13, 2023			



URBANTECH® Consulting
A Division of Leighton-Zec West Ltd.
2030 Bristol Circle, Suite 105
Oakville, ON, L6H 0H2
TEL: 905.879.8818 • urbantech.com

1315 SILVER SPEAR

Region of Peel
working with you

MISSISSAUGA

EROSION & SEDIMENT CONTROL DETAILS

REGION FILE No. XXX	CITY FILE No. XXX		
SCALE: N.T.S.	AREA	PROJECT No.	23-314
DRAWN BY: X.S.	CHECKED BY: R.M./R.B.T.M	PLAN No.	1002
DATE: SEPTEMBER 2023	SHEET OF	C-	