

- LEGEND**
- PROPOSED CATCHBASIN
 - PROPOSED DOUBLE CATCHBASIN
 - PROPOSED STORM MANHOLE
 - PROPOSED SANITARY MANHOLE
 - PROPOSED FIRE HYDRANT
 - ⊕ PROPOSED VALVE & BOX
 - PROPOSED PLUG
 - PROPOSED STORM SEWER
 - PROPOSED SANITARY SEWER
 - PROPOSED WATERMAIN
 - PROPOSED PROPERTY BOUNDARY
 - PROPOSED STORM CONNECTION
 - PROPOSED SANITARY CONNECTION
 - PROPOSED SLOPE (MAX 3:1)
 - PROPOSED OVERLAND FLOW
 - EXISTING OVERLAND FLOW
 - DCB* DOUBLE CATCHBASIN WITH CB SHIELD
 - ⊕ SUMP PUMP REQUIRED
 - 104 TREE NUMBER
 - TREE TO BE REMOVED
 - TREE TO REMAIN
 - TREE HOARDING
 - STREET LIGHT POST
 - ◻ TRANSFORMER
 - EROSION ACCESS ALLOWANCE SETBACK
 - 100-YEAR FLOODLINE (96.05m)

NO.	DATE	BY/DRAWN	REVISIONS
3	24/01/21	AJP/JN	RE-ISSUED FOR RE-ZONING
2	23/01/10	AJP/JN	RE-ISSUED FOR RE-ZONING
1	21/08/09	SP/ZG	ISSUED

CAD FILE: 1407GS.dwg PLOT SCALE: 1:1 PLOT DATE: Jan 31, 2024

BENCHMARK
ELEVATIONS SHOWN HEREON ARE GEODETIC VERTICAL DATUM—1928, AND WERE DERIVED FROM CITY OF MISSISSAUGA BENCHMARK No. 713, HAVING ELEVATIONS OF 96.649m.

NOTE
EXISTING TOPOGRAPHIC INFORMATION WAS COMPLETED ON THE 20TH DAY OF OCTOBER, 2020 AND PREPARED BY TARASIK McMILLAN LTD. ONTARIO LAND SURVEYORS. File No. 4985-20-T

DESIGNED BY

APPROVED BY

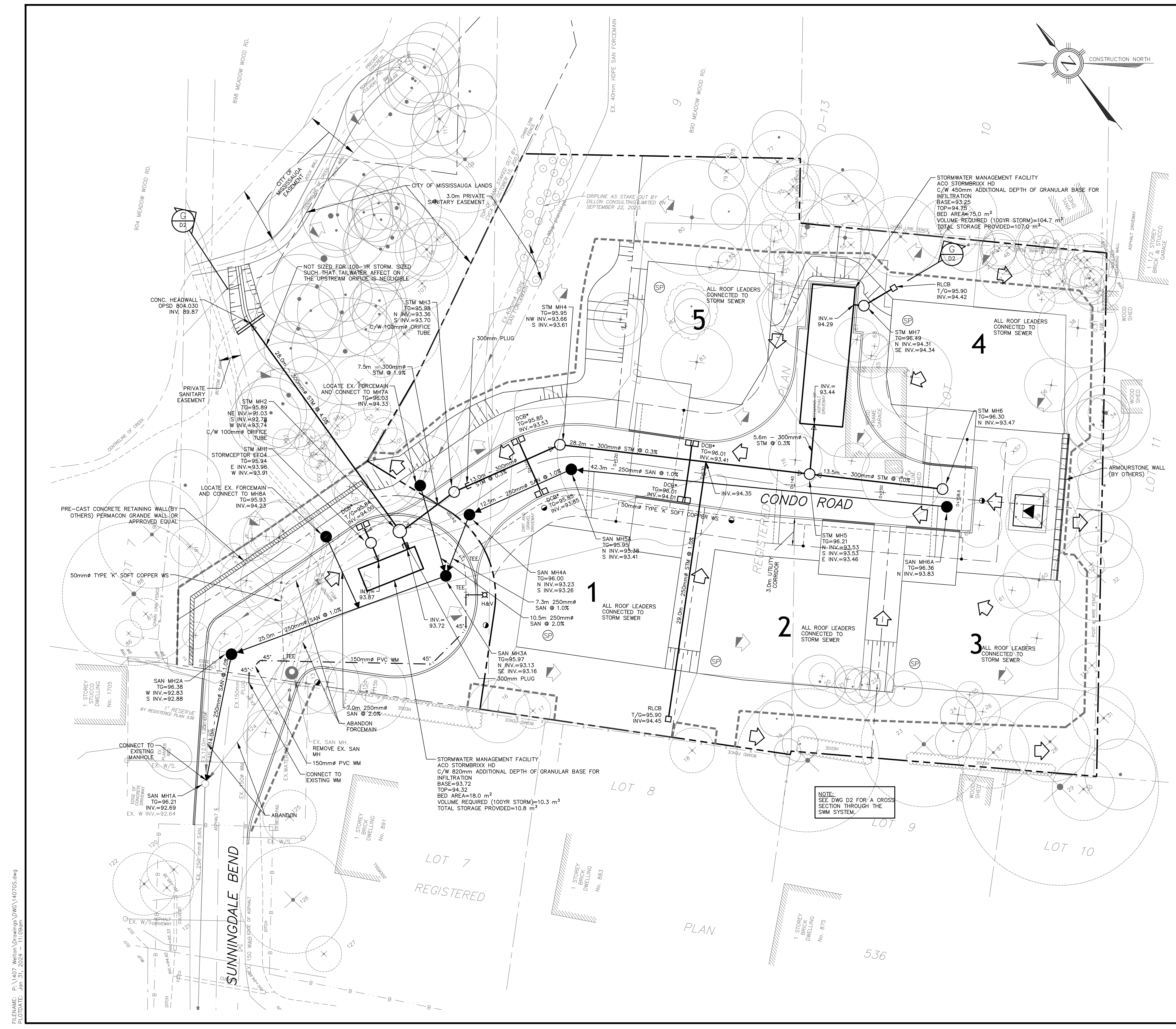
TRAFALGAR ENGINEERING
#1-481 MORDEN ROAD, OAKVILLE, ON, L6K 3W6
www.trafalgareng.com

PROJECT TITLE
RESIDENTIAL DEVELOPMENT

LOCATION
**1667 SUNNINGDALE BEND
MISSISSAUGA ON**

DRAWING TITLE
SERVICING PLAN

SCALE	1:200	DESIGN BY	SP	PROJECT No.	1407
DRAWN BY	AJP	CHECKED BY	JN	PLAN No.	S1
DATE	2023/06/15	SHEET	1 OF 1		



FILENAME: P:\1407 Welton\Drawings\DWG\1407GS.dwg
 PLOTTED: Jan 31, 2024 - 11:09am