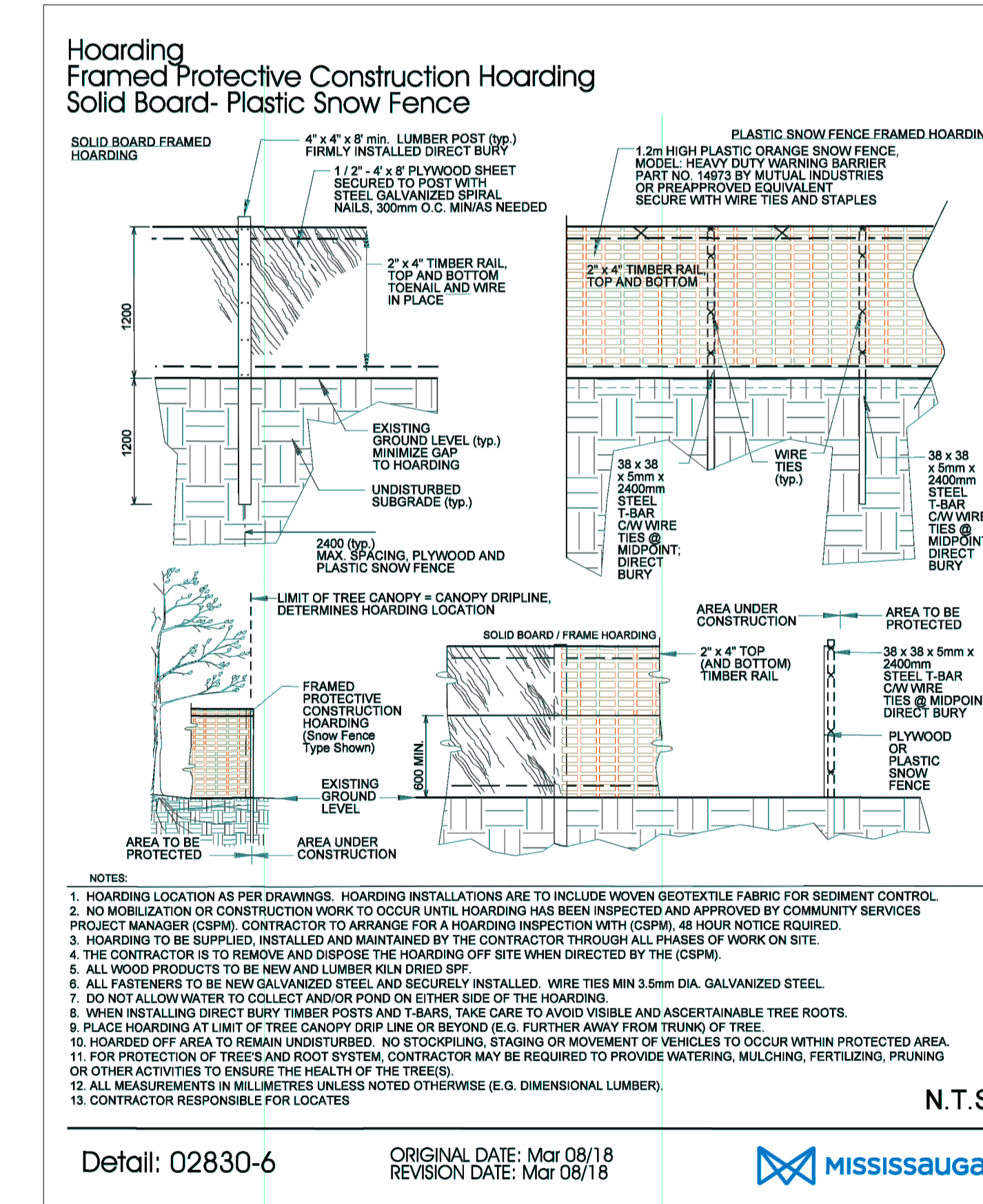


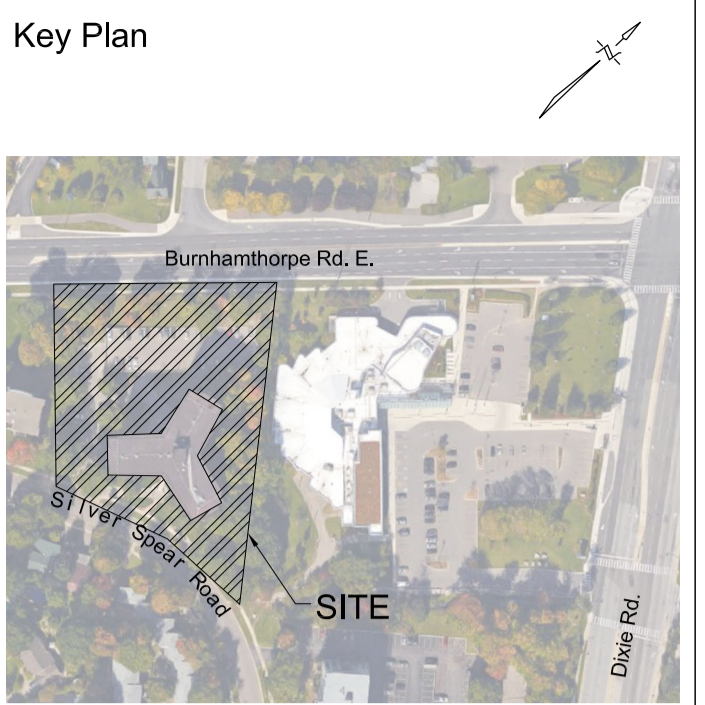
TAG #	BOTANICAL NAME	COMMON NAME	DBH (cm)	SPR (m)	CONDITION	REMARKS	STATUS	LOCATION	TPZ (m)
614	Quercus rubra	Red Oak	115	18	Good	Tree is in good condition	Injure	West Property Line	9
502	Malus domestica	Common Apple	12.14	4	DEAD	2 Trunk clump. Canopy dieback-boundary tree	Remove	West Property Line	N/A
503	Acer platanoides	Norway Maple	30.18	6	Poor	2 Trunk clump. Boundary Tree. Tree growing through chain link fence. Trunk girdled.	Remove	West Property Line	N/A
504	Acer saccharum	Sugar Maple	12	4	Fair	Tree girdled by chainlink fence. Boundary Tree	Remove	West Property Line	N/A
505	Quercus rubra	Red Oak	55	8	Good	Boundary tree. Trunk originates on neighboring property. Canopy form good. Foliage exhibits anthracnose fungal damage.	Preserve	West Property Line	3.6
506	Fraxinus americana	White Ash	12	6	DEAD	EAB damage. Tree leaning east.	Remove	West Property Line	N/A
507	Acer saccharum	Sugar Maple	28.27	6	Poor	2 trunk clump. South trunk exhibits cavity decay. Top 75% of canopy dead. North trunk in good condition. Included bark.	Remove	West Property Line	N/A
508	Acer saccharum	Sugar Maple	32	6	Fair	Bark decay on N.W side of trunk. Canopy lopsided. Favoured North side of trunk.	Remove	North West Corner	N/A
509	Carya cordiformis	Bitternut Hickory	49	12	Good	Sugar maple sapling growing at North Side of trunk.	Remove	North West Corner	N/A
510	Acer saccharum	Sugar Maple	31	6	Good		Remove	North West Corner	N/A
511	Acer saccharum	Sugar Maple	50	10	Good	Canopy leaning east.	Remove	North West Corner	N/A
615	Acer saccharum	Sugar Maple	28	6	Poor	Severe cavity decay. Top 50% of canopy is dead.	Remove	North West Corner	N/A
616	Pinus nigra	Austrian Pine	28	3	Fair	Slight lean SW. Canopy lopsided due to shade from adjacent trees.	Remove	North West Corner	N/A
617	Acer saccharum	Sugar Maple	36	6	Good	2 Co-dominant leaders	Remove	North West Corner	N/A
515	Acer saccharum	Sugar Maple	34	6	Good	Canopy on South and East side only.	Remove	North West Corner	N/A
516	Acer saccharum	Sugar Maple	28	6	Fair	Minor cavity decay in trunk. Canopy health good.	Remove	North West Corner	N/A
618	Acer saccharum	Sugar Maple	28	6	Good		Remove	North side of site	N/A
518	Acer saccharum	Sugar Maple	28	6	Good	Slight lean south.	Remove	North side of site	N/A
619	Acer saccharum	Sugar Maple	33	6	Good		Remove	North side of site	N/A
522	Acer saccharum	Sugar Maple	30	8	Good	Top of canopy sparse.	Remove	North side of site	N/A
523	Quercus rubra	Red Oak	80	12	Good		Remove	North side of site	N/A
620	Quercus rubra	Red Oak	86	12	Poor	Canopy to one side, main leader dead, 50% dieback.	Remove	North boundary.	N/A
621	Acer saccharum	Sugar Maple	28	6	Good		Remove	North east corner	N/A
527	Quercus rubra	Red Oak	56	12	Good	Few dead twigs	Remove	North east corner	N/A
528	Acer platanoides	Norway Maple	30	6	Good	Top of crown is missing.	Remove	North east corner	N/A
622	Quercus rubra	Red Oak	76	10	Fair	Dieback at top of canopy.	Remove	North east corner	N/A
623	Robinia pseudoacacia	Black Locust	16,16,8,8	4	Poor	Stump sprout regeneration. Main trunk cut/girdled by chainlink fence.	Remove	North east corner	N/A
531	Acer saccharum	Sugar Maple	24	6	Good		Remove	North east corner	N/A
624	Quercus alba	White Oak	55	12	Good	Canopy growth in good condition. Canopy lean east due to shading of adjacent trees.	Injure	North east corner	3.6
533	Ulmus pumila	Siberian Elm	35	6	Poor	Tree cut at 1.5m from grade. Stump sprout regeneration.	Preserve	North east corner	2.4
625	Acer saccharum	Sugar Maple	32	6	Fair	Canopy topped. Minor branch tip dieback.	Remove	North east corner	N/A
535	Quercus rubra	Red Oak	74	12	Good	Canopy health good. Canopy shape lopsided, favouring south side of trunk.	Remove	East Boundary	N/A
536	Acer platanoides	Norway Maple	40	8	Poor	Canopy lopsided. West 1/2 of canopy removed. Severe surface root damage.	Injure	East Boundary	2.4
537	Acer platanoides	Norway Maple	44	8	Poor	Canopy health is good. 2 co-dominant leaders. Large injury on west side of trunk. Severe decay and carpenter ant damage observed in bark.	Remove	East Boundary	N/A
627	Acer platanoides	Norway Maple	25	6	Good	Tree growing at fence line	Preserve	East Boundary	1.8
628	Acer saccharum	Sugar Maple	51	12	Good	Cavity at SW side of root flare. Canopy growth good	Injure	East Boundary	3.6

1 Tree Inventory Table

TAG #	BOTANICAL NAME	COMMON NAME	DBH (cm)	SPR (m)	CONDITION	REMARKS	STATUS	LOCATION	TPZ (m)
629	Pinus nigra	Austrian Pine	41	6	Fair	Leaning north. Sapsucker holes on trunk.	Remove	South of parking lot	N/A
542	Pinus nigra	Austrian Pine	40	6	Fair	Leaning north. Canopy sparse. Sapsucker holes on trunk.	Remove	South of parking lot	N/A
545	Acer saccharum	Sugar Maple	50	12	Good		Injure	North of existing building	3
546	Acer saccharum	Sugar Maple	38	12	Good		Injure	North of existing building	2.4
630	Acer saccharum	Sugar Maple	46	10	Good		Injure	East Boundary	3
631	Acer saccharum	Sugar Maple	46	10	Good	Canopy leaning south.	Injure	East Boundary	3
632	Acer saccharum	Sugar Maple	22	6	Good		Injure	East open space	1.8
550	Fagus grandifolia	American Beech	38	8	Terminal Decline	Advanced Beech bark disease. Canopy dieback.	Injure	East open space	2.4
633	Acer saccharum	Sugar Maple	46	8	Good	Canopy favouring east side of trunk.	Injure	East open space	3
552	Fagus grandifolia	American Beech	64	12	Fair	Minor Beech bark disease damage. Canopy is in good condition.	Injure	East open space	4.2
634	Fagus grandifolia	American Beech	39	12	Fair	Minor Beech bark disease.	Injure	East open space	2.4
635	Acer saccharum	Sugar Maple	30	8	Good	Trunk leaning south east	Injure	East open space	4
636	Quercus rubra	Red Oak	90	16	Good	Canopy lopsided favouring east side of trunk.	Injure	East Boundary	5.4
556	Fagus grandifolia	American Beech	27	4	DEAD	Severe Beech bark disease, canopy dieback.	Remove	East open space	N/A
557	Fagus grandifolia	American Beech	28	6	Fair	Minor Beech bark disease, canopy growth in in good condition.	Injure	East open space	1.8
637	Acer saccharum	Sugar Maple	40	8	Good		Injure	East open space	2.4
638	Acer saccharum	Sugar Maple	38	6	Good		Preserve	East open space	2.4
639	Quercus rubra	Red Oak	76	8	Good	Canopy growth narrow. Minor branch tip dieback. Slime flux at frost crack.	Injure	East open space	4.8
640	Acer saccharum	Sugar Maple	52	10	Good		Injure	East Boundary	3.6
641	Quercus rubra	Red Oak	100	12	Good		Injure	East open space	6
642	Quercus rubra	Red Oak	85	10	Good	Canopy lopsided. Favoured south and west side of trunk.	Preserve	South east corner of existing building	5.4
643	Acer saccharum	Sugar Maple	32		Good	2 co-dominant leaders in canopy	Preserve	South east corner of existing building	0
644	Quercus rubra	Red Oak	95	12	Good		Preserve	East Boundary	6
645	Acer saccharum	Sugar Maple	40	8	Good	Adjacent tree.	Preserve	Neighboring east boundary	4
646	Pinus nigra	Austrian Pine	40	6	Fair	Minor diplodia tip blight damage.	Remove	North west of existing building	N/A
569	Tilia cordata	Little Leaf Linden	36	6	Good		Remove	South of existing parking lot	N/A
570	Tilia cordata	Little Leaf Linden	14	4	Terminal Decline	Severe canker infection on bark. canopy decline	Remove	South of existing parking lot	N/A
647	Quercus rubra	Red Oak	100	10	Good		Preserve	South west corner of existing building	6
648	Tilia cordata	Little Leaf Linden	48	8	Good	Trunk is leaning slightly south	Remove	South of existing building	N/A
649	Tilia cordata	Little Leaf Linden	42	6	Fair	Canopy sparse. Root flare severely injured by lawn care equipment. Slight canopy decline	Preserve	Main entrance to existing building	3
650	Tilia cordata	Little Leaf Linden	35	6	Good	Canopy health is good. Tree is leaning south east.	Preserve	South of existing building	2.4
651	Tilia cordata	Little Leaf Linden	40	8	Poor	Canopy decline. Heartwood decay. Surface root damage.	Preserve	South of existing building	2.4
652	Quercus rubra	Red Oak	85	10	Fair	Tree topped. Branch dieback observed at top of canopy.	Preserve	South east corner	5.4
653	Quercus rubra	Red Oak	80	10	Good		Preserve	South east corner	4.8
654	Acer saccharum	Sugar Maple	42	12	Fair	Canopy lopsided. Favoured east side of trunk. Damage at base	Preserve	South east corner	3
655	Quercus rubra	Red Oak	90	12	Good		Preserve	South east corner	5.4



2 Tree Protection Hoarding Detail



Legend

No	Date	Revisions	By
3.0	11.06.2023	REISSUED FOR RE-ZONING APPLICATION	GM
2.0	10.12.2018	ISSUED FOR RE-ZONING APPLICATION - DRAFT	EKA
1.0	11.06.2017	ISSUED FOR RE-ZONING APPLICATION	EKA

Designed By: [Signature] North Arrow

the mbt group  
255 Wiskard Ave., Unit 14 | Toronto, Ontario, Canada M6M 1S8  
T: (416) 448-7767 | F: (416) 448-1803 | www.mbt.com

Project Name:  
**1315 Silver Spar Road**  
Starlight Investments  
City of Mississauga

Sheet Title:  
**Tree Inventory Table and Details**

Designed:	Drawn:	Scale:	Drawing No.:
GM	DI	N.T.S	TP-2
Date of Drawing:	Job No.:		
August 2017	SIS001		