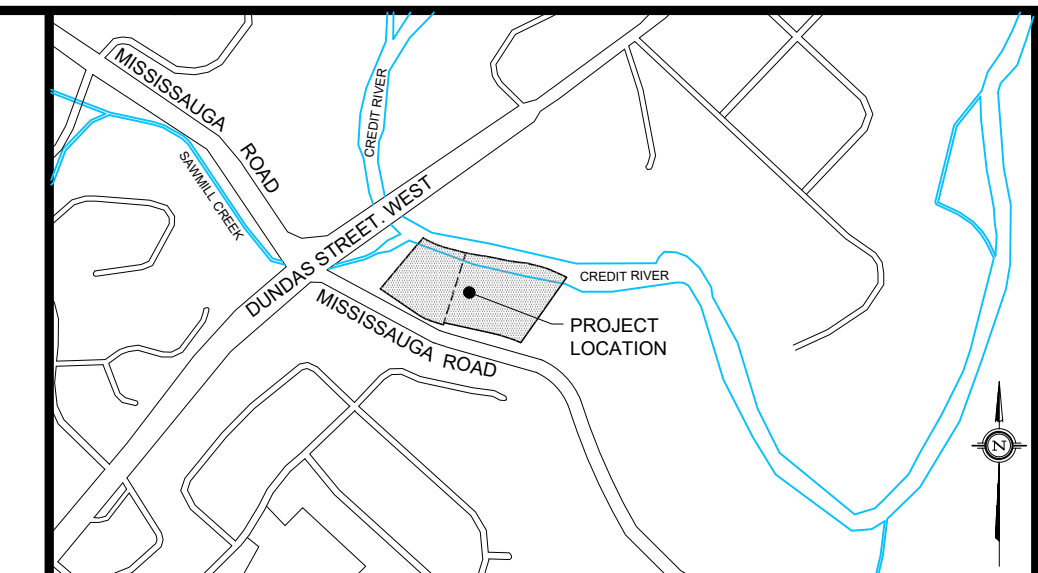
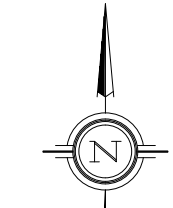


PLAN OF TOPOGRAPHY OF
PART OF LOTS 3 AND 4,
RANGE 1,
SOUTH OF DUNDAS STREET
RACEY TRACT
(ORIGINALLY IN TOWNSHIP OF TORONTO)
CITY OF MISSISSAUGA
REGIONAL MUNICIPALITY OF PEELE



KEY PLAN
N.T.S.

LEGEND

EXISTING	PROPOSED	SYMBOL/DESCRIPTION
MH1A	FD	MANHOLE
CB	DCB	FLOOR DRAIN TO INTERNAL OGS
HYD&V	HYD&V	SINGLE CATCHBASIN
VB	VB	DOUBLE CATCHBASIN
		FIRE HYDRANT
		VALVE & BOX
		SLOPE LINE (3:1 MAX)
		CURRENT PROPERTY LIMIT
		FUTURE PROPERTY LIMIT
		SWALE
		LIMIT OF BUILDING EXTENT
		RIGHT OF WAY
		LOT LINE
		CHAIN LINK FENCE
		CURB/SIDEWALK
		CONCRETE RETAINING WALL
		PARKING GARAGE / CONCRETE WALL
		FOREST DRIPLINE
		PROP. GRASSED SURFACE
		PROP. PAVERS SURFACE
		PROP. ASPHALT SURFACE
		PROP. CONCRETE SURFACE
		REGULATORY FLOODLINE
		+0.30m FREEBOARD

- NOTES
- ALL DIMENSIONS ARE IN METRES UNLESS OTHERWISE NOTED.
 - ALL DIMENSIONS SHALL BE CHECKED AND VERIFIED IN THE FIELD BY THE CONTRACTOR PRIOR TO ANY CONSTRUCTION, AND ANY DISCREPANCIES SHALL BE REPORTED IMMEDIATELY TO THE ENGINEER.
 - ALL WORK SHALL BE IN ACCORDANCE WITH CURRENT CITY OF MISSISSAUGA STANDARD SPECIFICATIONS AND DRAWINGS UNLESS OTHERWISE NOTED HEREIN.
 - ORDER OF PRECEDENCE OF STANDARDS DRAWINGS IS FIRSTLY CITY OF MISSISSAUGA, AND SECONDLY ONTARIO PROVINCIAL STANDARD DRAWINGS (OPSD).
 - THE CONTRACTOR TO BE RESPONSIBLE FOR LOCATION OF ALL EXISTING U/G AND OVERHEAD UTILITIES. CONTRACTOR IS REQUIRED TO OBTAIN ALL LOCATIONS & NOTIFY THE VARIOUS UTILITY COMPANIES 72 HOURS PRIOR TO THE COMMENCEMENT OF ANY WORK. THE CITY OF MISSISSAUGA AND CONSULTANT ASSUMES NO RESPONSIBILITY FOR THE ACCURACY OF THE LOCATIONS OF EXISTING UTILITIES AS INDICATED ON THIS DRAWING.

BENCHMARK
BENCHMARK: CITY OF MISSISSAUGA No. 58
ELEVATION = 108.293m
LOCATION: CITY OF MISSISSAUGA
DATED: DEC 10, 2019
DESCRIPTION: ON THE WEST FACE AT THE NORTH CORNER OF A SPRINGBANK ARTS CENTER#3057 ON THE EAST SIDE OF MISSISSAUGA ROAD, 198m +/- NORTH OF DUNDAS ST.
COMPLETED BY:
TARASICK McMILLAN KUBICKI LTD.
ONTARIO LAND SURVEYORS
4181 SLADVIEW CRESCENT, UNIT 42, MISSISSAUGA, ONTARIO L5L 2R2
(905) 569-8849

NO.	REVISION	DATE	BY	APPROVED
01	ISSUED FOR FIRST SUBMISSION	2021/04/26	K.M.	
02	ISSUED FOR SECOND SUBMISSION	2023/10/23	K.M.	

SUBMISSION DRAWING
NOT TO BE USED FOR CONSTRUCTION

5770 Highway 7
Woodbridge, Ontario
L4L 1T8

CLIENT NAME:
590816 ONTARIO INC.
2616 CYNARA ROAD
MISSISSAUGA, ON L5B 2R7

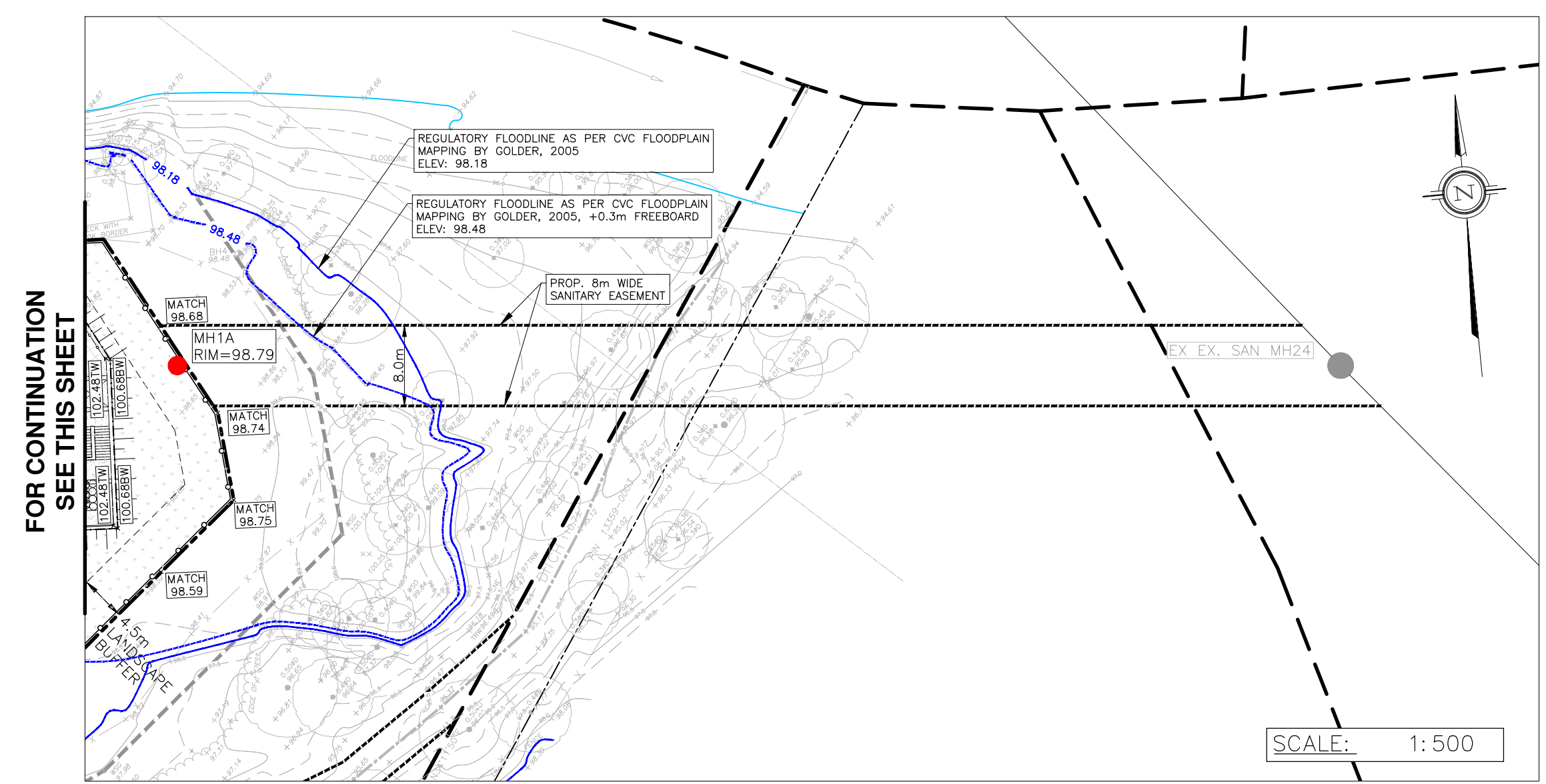
PROJECT NAME:
2935 & 2955 MISSISSAUGA ROAD
MISSISSAUGA, ON

GRADING PLAN

DESIGNED BY: E.P./K.M.	SCALES:	PROJECT No. 20-697
CHECKED BY: E.G.	HORIZONTAL: 1:500	DRAWING No. GP1
DRAWN BY: K.M.	VERTICAL: N/A	SHEET No. 01
DATE: APR 26, 2021	SHEET SIZE: 24"x36"	

NOTE:
THE EXISTING (NOT DESTROYED) CITY OF MISSISSAUGA BENCH MARK NUMBER, ELEVATION, AND LOCATION/DESCRIPTION USED TO ESTABLISH THE ELEVATION ON THE PLAN IS AS FOLLOWS:
ELEVATIONS ARE REFERRED TO THE CITY OF MISSISSAUGA BENCHMARK NO. 58 LOCATED ON THE WEST FACE AT THE NORTH CORNER OF A SPRINGBANK ARTS CENTRE#3057 ON THE EAST SIDE OF MISSISSAUGA ROAD, 198M +/- NORTH OF DUNDAS STREET WEST HAVING A PUBLISHED ELEVATION OF 108.293m.

NOTE:
THE CONTRACTOR IS CAUTIONED THAT ALL EXISTING UTILITIES ARE NOT INDICATED ON THIS DRAWING. THE CONTRACTOR MUST ARRANGE FOR LOCATES FROM EACH UTILITY COMPANY PRIOR TO ANY CONSTRUCTION OR EXCAVATION. THE CONTRACTOR SHALL BE SOLELY RESPONSIBLE FOR THE PROTECTION OF ALL UTILITIES, INCLUDING THOSE NOT INCLUDED ON THIS DRAWING. GRECK AND ASSOCIATES LIMITED CAN NOT ACCEPT RESPONSIBILITY FOR DAMAGE TO ANY EXISTING UTILITY WHICH MAY, OR MAY NOT BE INDICATED ON THIS DRAWING.



FOR CONTINUATION
SEE THIS SHEET

SCALE: 1:500