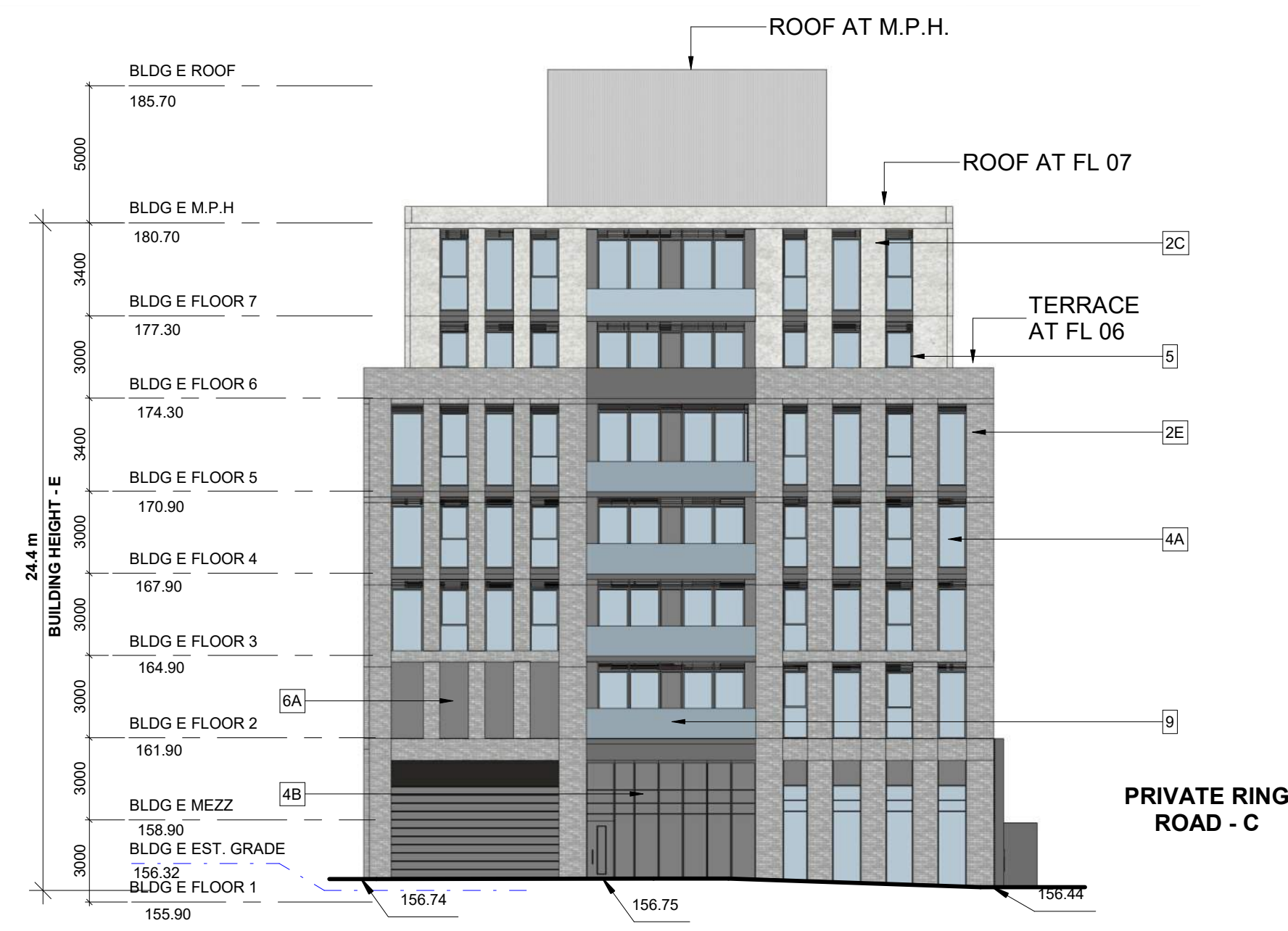


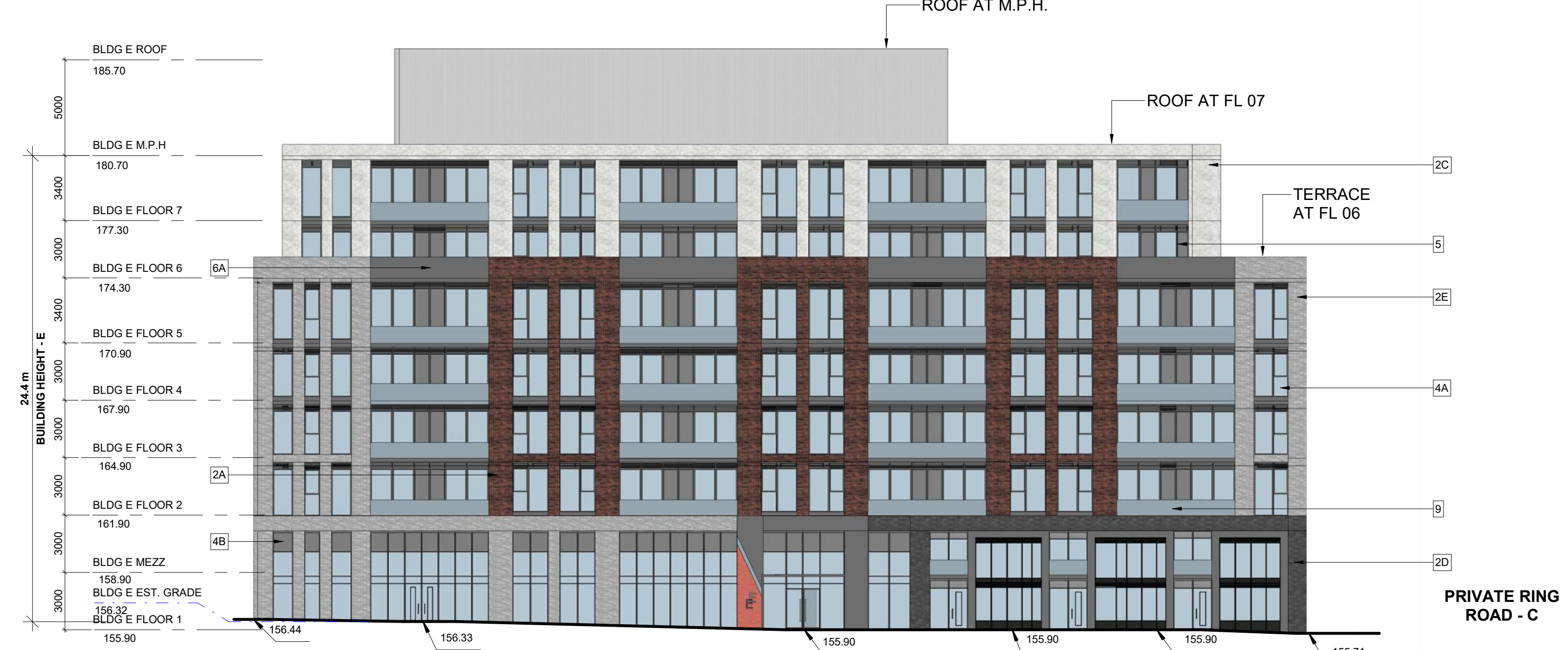
This drawing, as an instrument of service, is provided by and is the property of Turner Fleischer. The contractor must verify and accept responsibility for all dimensions and conditions on site and must notify Turner Fleischer of any variations from the supplied information. This drawing is not to be used for any other project. The architect is not responsible for the accuracy of survey, structural, mechanical, electrical, etc. information shown on this drawing. Refer to the appropriate consultant's drawings before proceeding with the work. Construction must conform to all applicable codes and requirements of all authorities having jurisdiction. The contractor working from drawings not specifically marked for construction must assume full responsibility and bear costs for any corrections or damages resulting from his work.

### EXTERIOR FINISH LEGEND

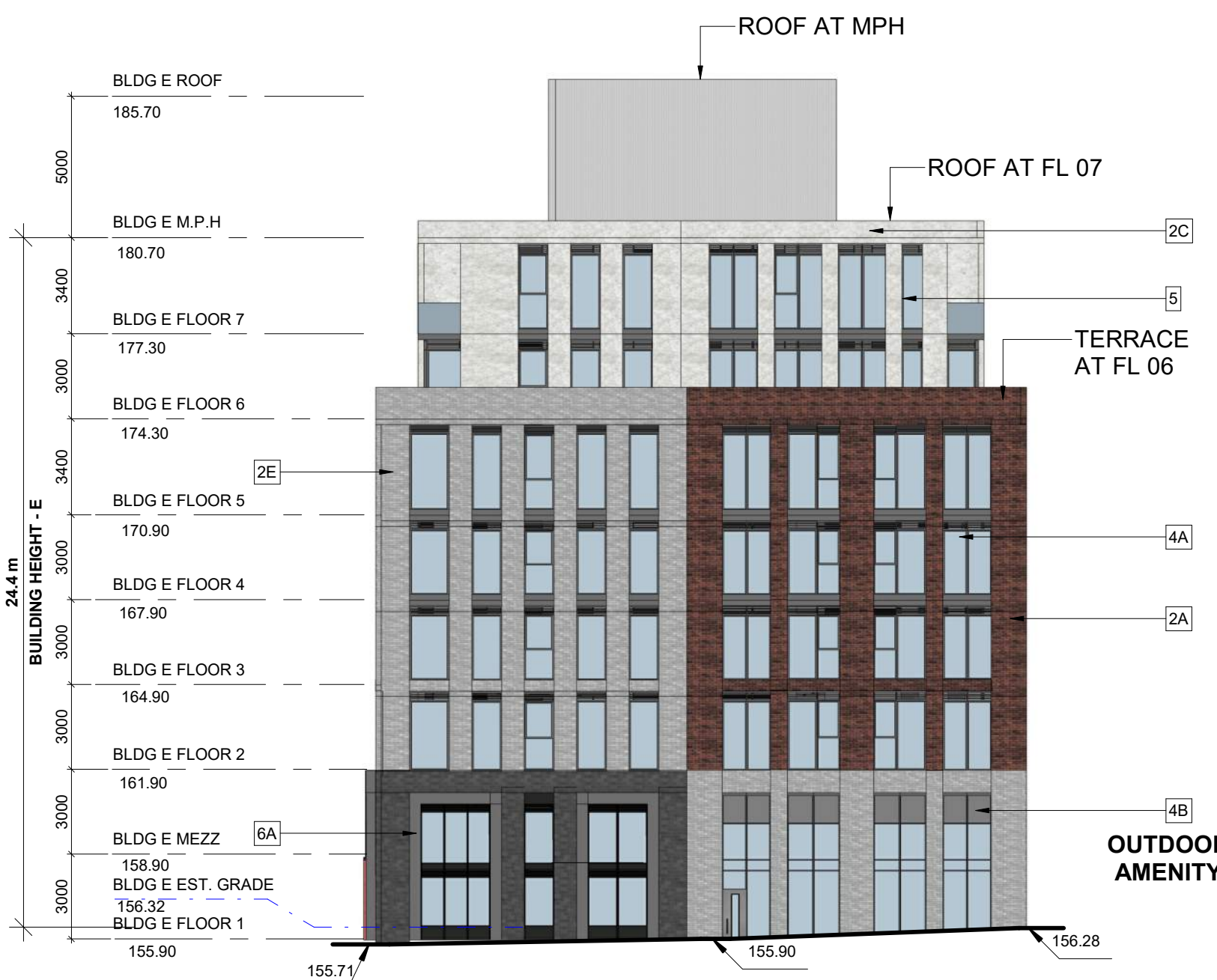
1	STONE - LIGHT GREY
2A	BRICK - DARK RED
2B	BRICK - DARK GREY
2C	BRICK - LIGHT BEIGE
2D	BRICK - BLACK
2E	BRICK - GREY
3	PRECAST CONCRETE - WHITE
4A	CLEAR GLAZING
4B	SPANDREL GLASS - GREY
5	ALUMINUM MULLIONS - BLACK
6A	METAL PANEL - DARK GREY
6B	METAL PANEL - LIGHT BEIGE
6C	METAL PANEL - RED
7	STUCCO - LIGHT GREY
7A	STUCCO - DARK GREY
8A	STONE - WARM WHITE
9	GLASS GUARD - CLEAR



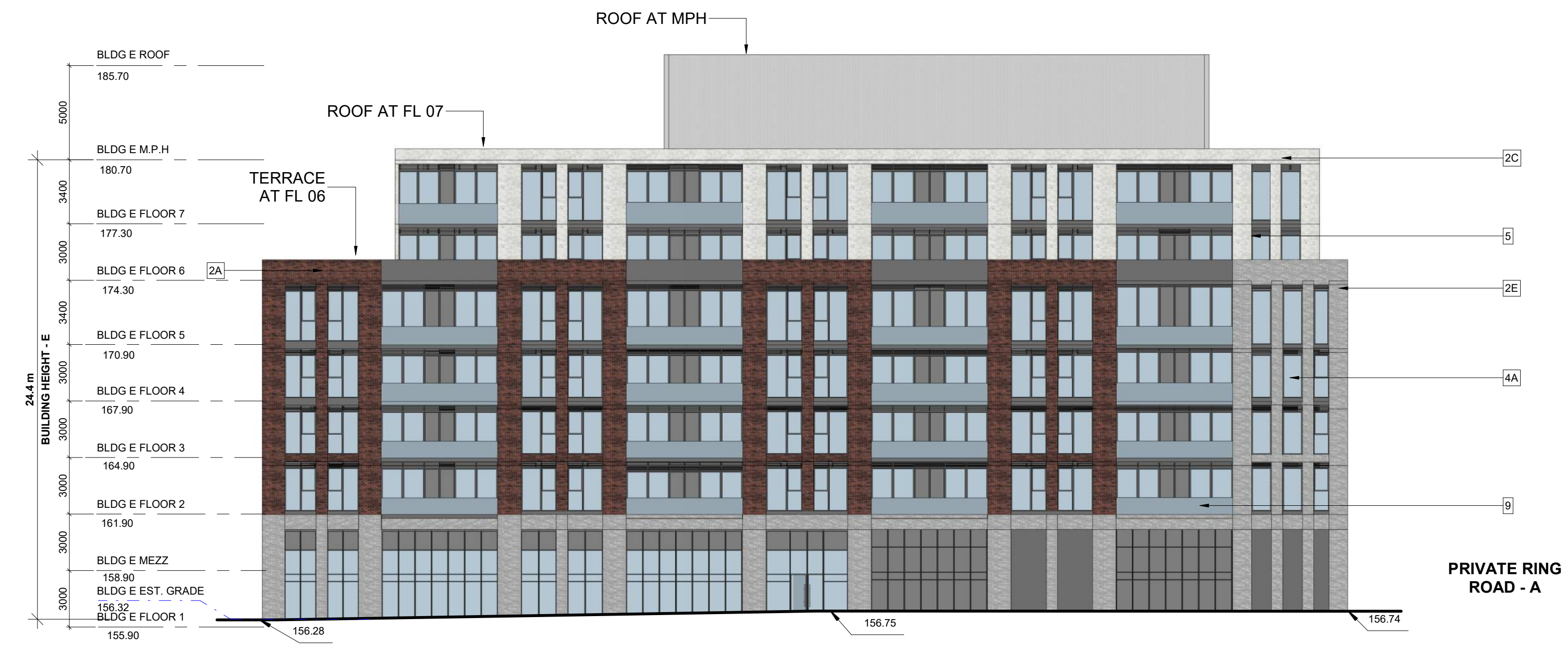
1 BLDG E WEST ELEVATION  
SPA315 1:200



2 BLDG E SOUTH ELEVATION  
SPA315 1:200



3 BLDG E EAST ELEVATION  
SPA315 1:200



4 BLDG E NORTH ELEVATION  
SPA315 1:200

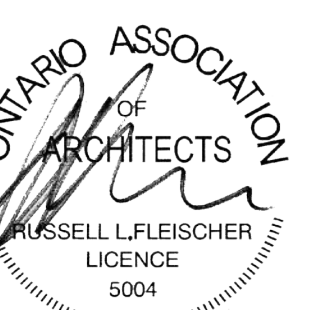
2	2024-09-19	PARTIAL REZONING SUBMISSION	MRZ
1	2023-08-22	OFFICIAL PLAN AND REZONING SUBMISSION	AYU
#	DATE	DESCRIPTION	BY

QUEENSCORP<sup>®</sup>

PROJECT  
4099 Erin Mills Parkway, Mississauga,  
ON

DRAWING  
BUILDING ELEVATIONS 'E'

PROJECT NO.  
19.001  
PROJECT DATE  
2024-09-19  
DRAWN BY  
OKL  
CHECKED BY  
AYU  
SCALE  
As indicated



DRAWING NO. SPA315 REV. 2