



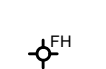
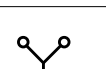



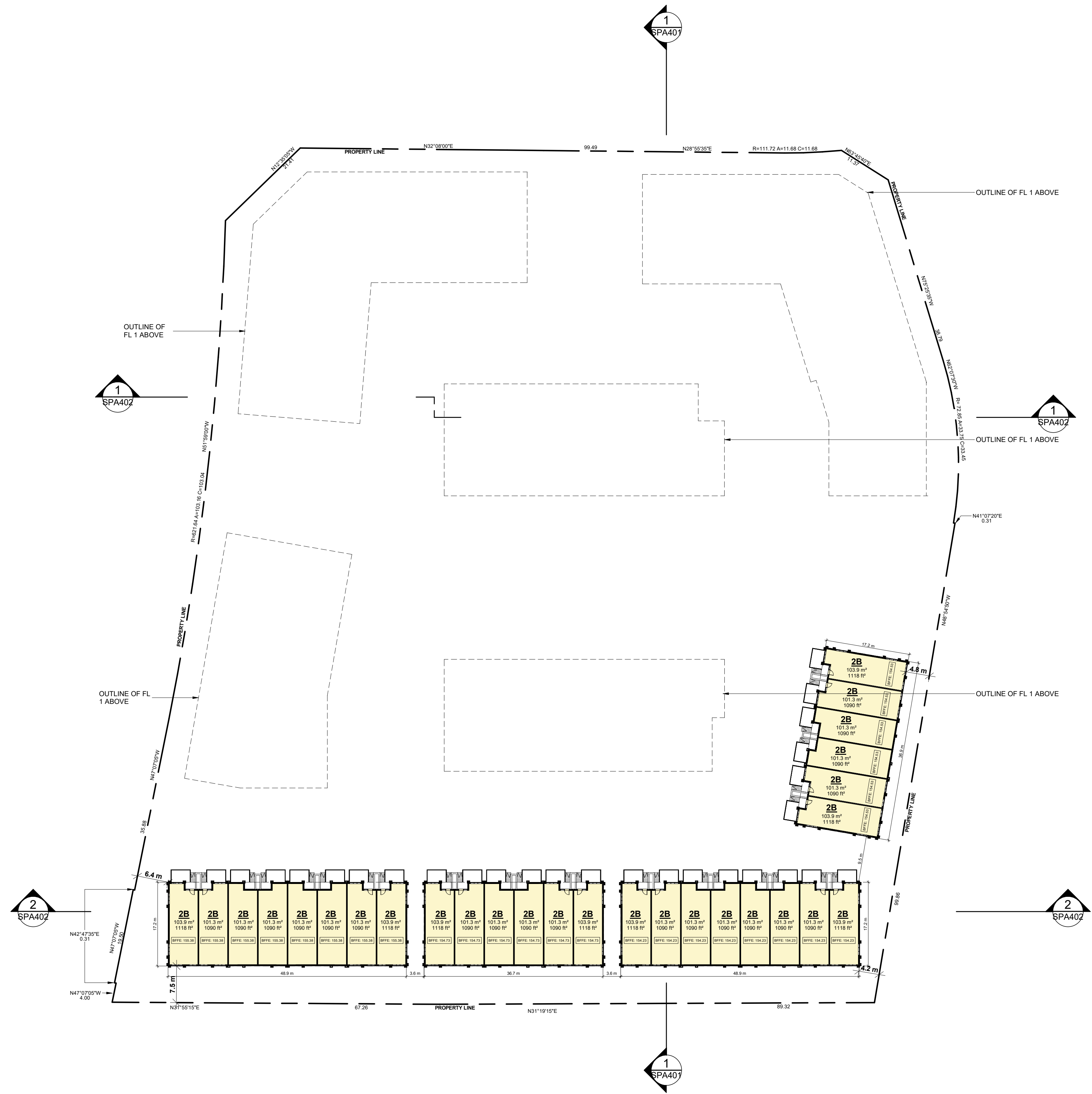


This drawing, as an instrument of service, is provided by and is the property of Turner Fleischer. The contractor must verify and accept responsibility for all dimensions and conditions on site and must notify Turner Fleischer of any variations from the supplied information. This drawing is not to be used for any other project. The architect is not responsible for the accuracy of survey, structural, mechanical, electrical, information shown on this drawing. Refer to the appropriate consultant's drawings before proceeding with the work. Construction must conform to all applicable codes and requirements of all applicable governing jurisdictions. The contractor working from drawings not specifically marked for construction must assume full responsibility and bear costs for any corrections or damage resulting from his work.

LEGEND

-  PRIMARY RESIDENTIAL ENTRANCE
-  SECONDARY RESIDENTIAL ENTRANCE
-  RETAIL ENTRANCE
-  EXIT
-  FIRE HYDRANT
-  SIAMESE CONNECTION
- S.T.** SHORT TERM BIKES
-  OUTLINE OF UG1
-  LANDSCAPE BUFFER
-  EXISTING BUILDING TO BE DEMOLISHED



#	DATE	DESCRIPTION	BY
2	2024-09-19	PARTIAL REZONING SUBMISSION	MMZ
1	2022-06-22	OFFICIAL PLAN AND REZONING SUBMISSION	AYU

QUEENSCORP[®]

PROJECT
4099 Erin Mills Parkway, Mississauga, ON

DRAWING
LOWER GROUND FLOOR PLAN

PROJECT NO.
19.001
PROJECT DATE
2024-09-19
DRAWN BY
ATS
CHECKED BY
AYU
SCALE
1 : 500



DRAWING NO.	REV.
SPA150	2