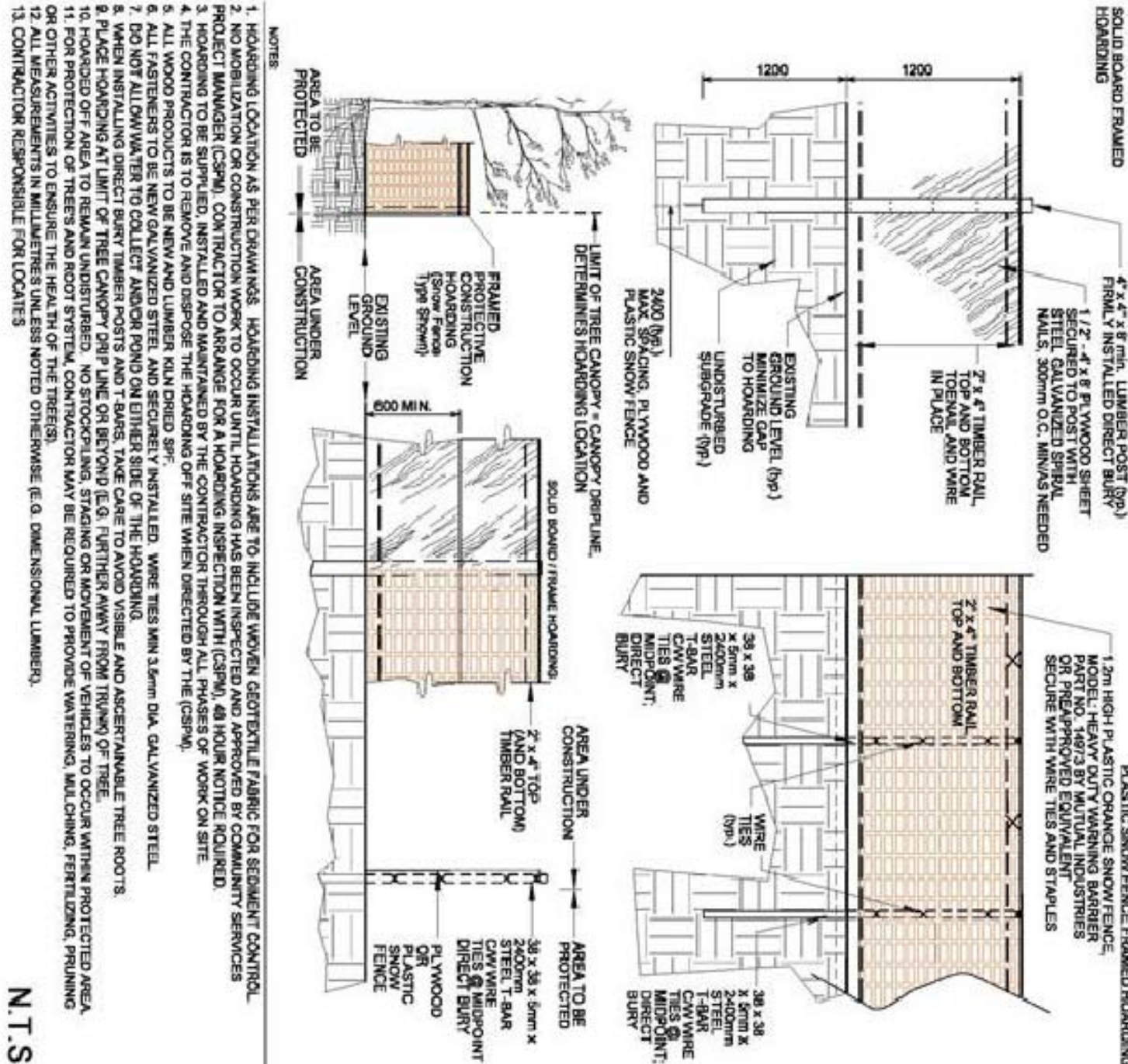


NOTE:
TO BE USED AS A GUIDELINE ONLY.
NOT TO SCALE. REMOVE CITY TITLE & BLOCK
NUMBER AND ADDRESS FROM ALL SHEETS.
CONDITIONS AT SITE SPECIFIC CONDITIONS
ARE TO BE CONFIRMED BY THE PROJECT
CONSULTANT.



Detail: 02830-6

ORIGINAL DATE: MAY 08/18
REVISION DATE: MAY 08/18

MISSISSAUGA

N.T.S.

MISSISSAUGA

Tree Protection Zone (TPZ)

BY-LAW #

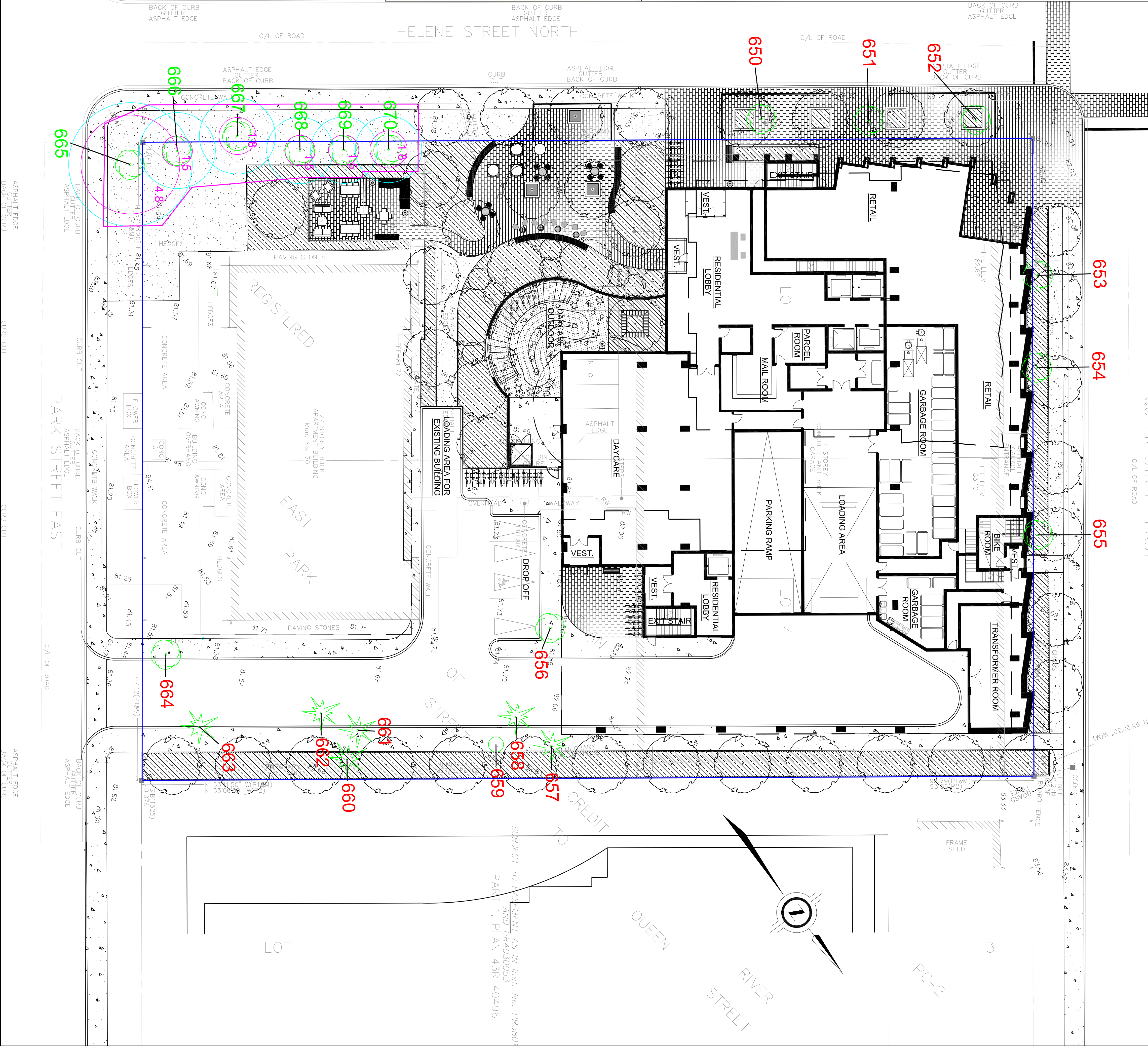
No construction activities, including grade changes,
storage of materials or equipment, dumping,
excavation is permitted within this TPZ

This tree protection barrier must remain in good condition
and must not be removed or altered without the
authorization of City of Mississauga, Urban Forestry.

Concerns or inquiries regarding this TPZ can be directed to:

(3-1-1)

Dial 3-1-1
905-615-4311
outside city limits



LEGEND

Tree Inventory

Refer to Table 1 of report dated 17 November 2022 for tree inventory information.
Trees greater than 10cm DBH on and within six metres of the subject property were
included in the inventory.

Tree Removals

The removal of 15 trees is required to accommodate the proposed development as
indicated with RED labels.

Tree Preservation

The preservation of the remaining trees will be possible with appropriate tree
protection measures. The trees identified for preservation are indicated with
GREEN labels. Tree protection measures will have to be implemented prior
to the construction phase (earth works). Refer to Tree Protection Plan Notes
for preservation details.

Tree Label (GREEN), preservation recommended

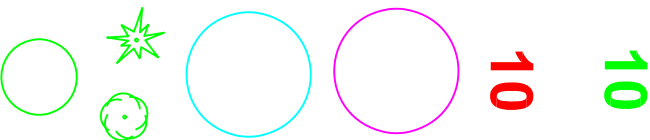
Tree Label (RED), removal required

Minimum Tree Protection Zone (MAGENTA circle)

Digeline (CYAN circle)

Surveyed Tree Location

KFC Estimated Tree Location



Specifications for the Protection and Preservation of Existing Vegetation

The following notes are to be included on all tree preservation plans:

- All existing trees, which are to remain, shall be fully protected with hooding to City Standards. The hooding shall be installed prior to any construction work. The hooding shall be removed and replaced by the contractor through all phases of work on site.
- No rigging cables shall be wrapped around or installed in trees. Surplus soil, equipment, debris or materials shall not be placed over root systems of the trees within the protective fencing. No contaminants will be dumped or flushed where feeder roots of trees exist.
- The developer or his/her agents shall take every precaution necessary to prevent damage to trees or shrubs to be retained.
- Where limbs or portions of trees are removed to accommodate construction work, they will be removed carefully in accordance with accepted arboricultural practices.
- Where root systems of trees are exposed directly adjacent to or damaged by construction work, they shall be trimmed neatly, and the area backfilled with appropriate material to prevent desiccation.
- When necessary, the trees will be given an overall pruning to restore the balance between roots and top growth or to restore the appearance of the trees.
- Trees that have died or have been damaged beyond repair, shall be removed and replaced by the owner at the developer's own expense with trees of a size and species as approved by the Community Services Department.
- If grades around trees to be protected are likely to change, the owner shall be required to take such precautions as any welling, retaining walls and root feeding, to the satisfaction of the Community Services Department.

No.	Issue/Revisions	Date	By
1	Report Submission	18 Nov. 2022	IB
2	Report Revision	3 Jan. 2022	IB
3	Report Revision	23 Jan. 2022	IB

Base Data: J.D. Barnes Ltd. (top); B.I. Group (site plan)

**KUNTZ
FORESTRY
CONSULTING INC.**

P.O. Box 1287 Lakeshore W. P.O.
146 Lakeshore Road West
Oakville, ON L6K 0B3
www.kuntzforestry.ca
consult@kuntzforestry.ca



Client
MPCT DIF 70 Park Street East
30 Adelaide Street East, Suite 301
Toronto, Ontario, M5C 3H1

Property
**23, 25, 27, 29, and 31 Helene Street North,
53 Queen Street East, and 70 Park Street East**
Mississauga, Ontario

Tree Inventory and Preservation Plan

Project	P3508	Figure	1
Date	23 January 2023		
Scale	1:200		