

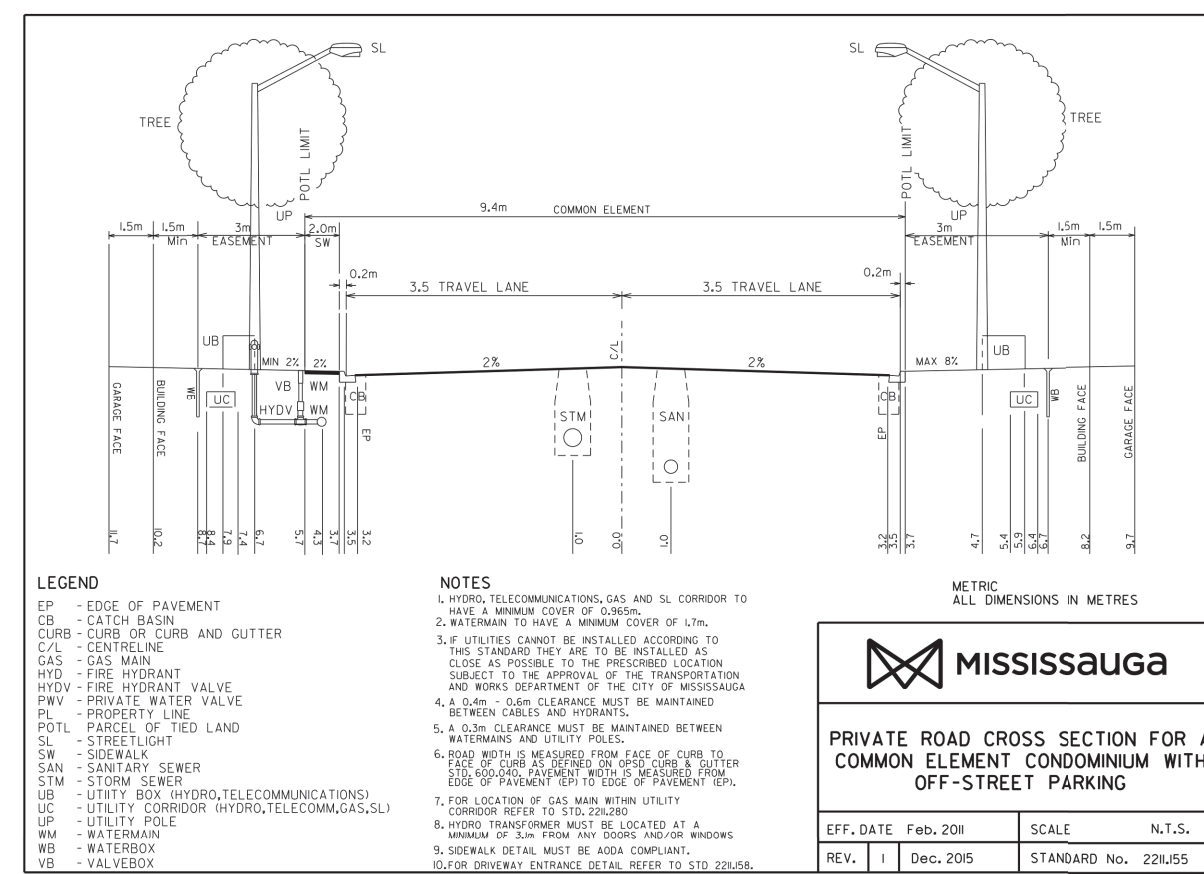
GRADING NOTES:

- ALL SURFACE DRAINAGE WILL BE SELF-CONTAINED, COLLECTED AND DISCHARGED AT A LOCATION TO BE APPROVED PRIOR TO THE ISSUANCE OF A BUILDING PERMIT.
- THE PORTIONS OF THE DRIVEWAY WITHIN THE MUNICIPAL BOULEVARD WILL BE PAVED BY THE APPLICANT.
- AT THE ENTRANCES TO THE SITE, THE MUNICIPAL CURB AND SIDEWALK WILL BE CONTINUOUS THROUGH THE DRIVEWAY AND A CURB DEPRESSION WILL BE PROVIDED FOR EACH ENTRANCE.
- ALL PROPOSED CURBING WITHIN THE MUNICIPAL BOULEVARD AREA FOR THE SITE IS TO SUIT AS FOLLOWS:
 - FOR ALL SINGLE FAMILY RESIDENTIAL PROPERTIES INCLUDING ON STREET TOWNHOUSES, ALL CURBING IS TO STOP AT THE PROPERTY LIMIT OR THE BACK OF THE MUNICIPAL SIDEWALK, WHICHEVER IS APPLICABLE; OR
 - FOR ALL OTHER PROPOSALS INCLUDING INDUSTRIAL, COMMERCIAL AND MULTI-UNIT RESIDENTIAL DEVELOPMENTS, ALL ENTRANCES TO THE SITE ARE TO BE IN ACCORDANCE WITH CITY OF MISSISSAUGA STANDARDS 2240.030/2240.031 (AS APPLICABLE) AND 2230.20. DRIVEWAY AND ENTRANCE CURB RADIUS DIMENSIONS SHALL BE IN ACCORDANCE WITH OSPD 350.010.
- ALL EXCESS EXCAVATED MATERIAL WILL BE REMOVED FROM THE SITE.
- THE EXISTING DRAINAGE PATTERN WILL BE MAINTAINED EXCEPT WHERE NOTED.
- THE APPLICANT WILL BE REQUIRED TO CONTACT ALL UTILITY COMPANIES TO OBTAIN ALL REQUIRED LOCATES PRIOR TO THE INSTALLATION OF HOARDING WITHIN THE MUNICIPAL RIGHT-OF-WAY.
- THE APPLICANT WILL BE RESPONSIBLE FOR THE COST OF ANY UTILITY RELOCATIONS NECESSITATED BY THE SITE PLAN.
- PRIOR TO COMMENCING CONSTRUCTION, ALL REQUIRED HOARDING, IN ACCORDANCE WITH THE ONTARIO OCCUPATIONAL HEALTH & SAFETY ACT AND REGULATIONS FOR CONSTRUCTION PROJECTS, MUST BE ERRECTED AND THEN MAINTAINED THROUGHOUT ALL PHASES OF CONSTRUCTION.
- SHOULD ANY WORKS BE REQUIRED WITHIN THE MUNICIPAL RIGHT-OF-WAY, A ROAD OCCUPANCY PERMIT WILL BE REQUIRED. P.U.C.C. APPROVAL WILL BE REQUIRED. FOR FURTHER INFORMATION, PLEASE CONTACT THE P.U.C.C./PERMIT TECHNOLOGIST, AT 905-615-4950 OR BY EMAIL AT TW.COUNTER@MISSISSAUGA.CA OR SEE THE WEBSITE LINK BELOW. <https://www.mississauga.ca/services-and-programs/transportation-and-streets/roads-and-sidewalks/apply-for-a-road-occupancy-permit/>

GRADING CERTIFICATION NOTE:

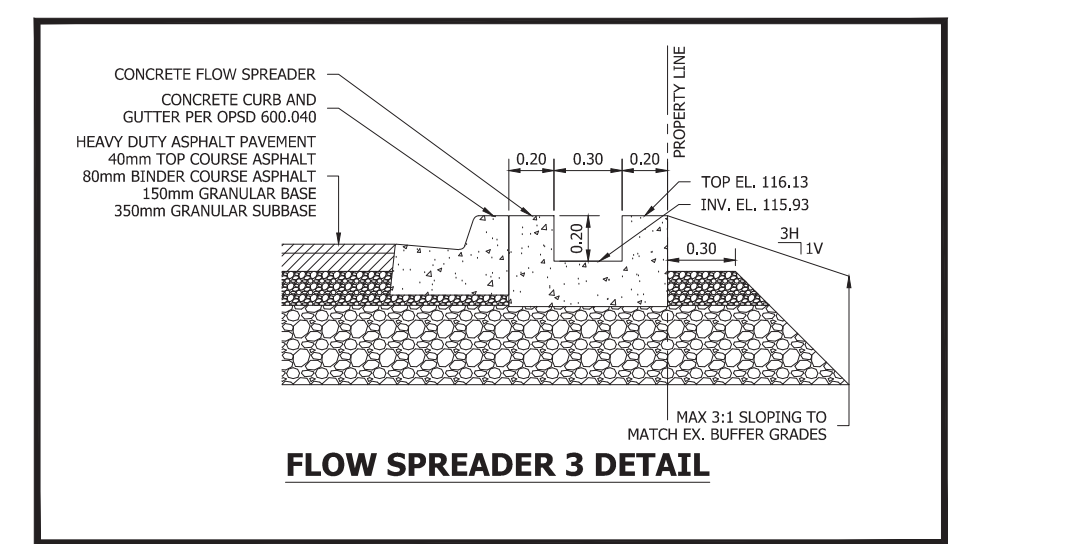
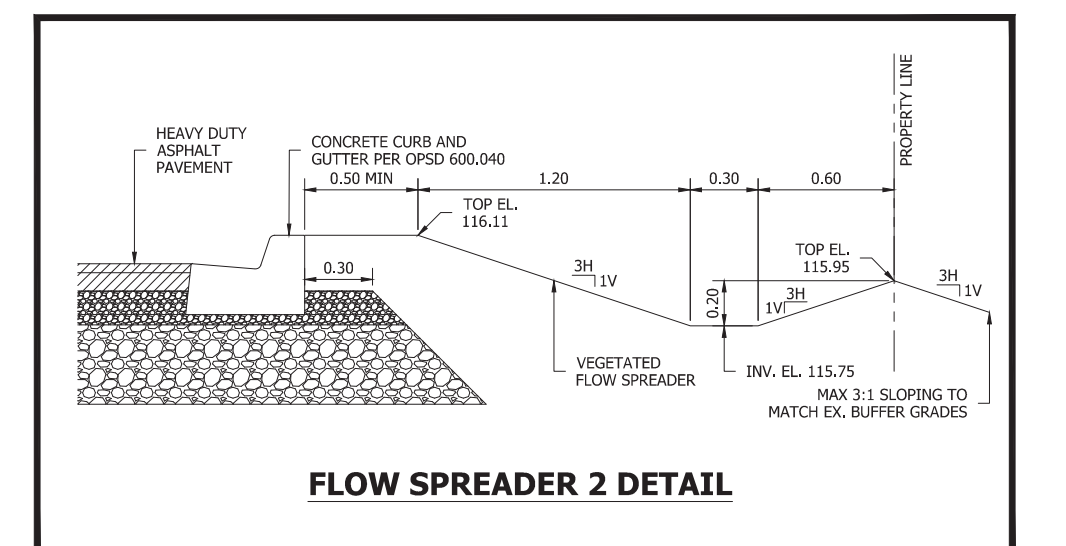
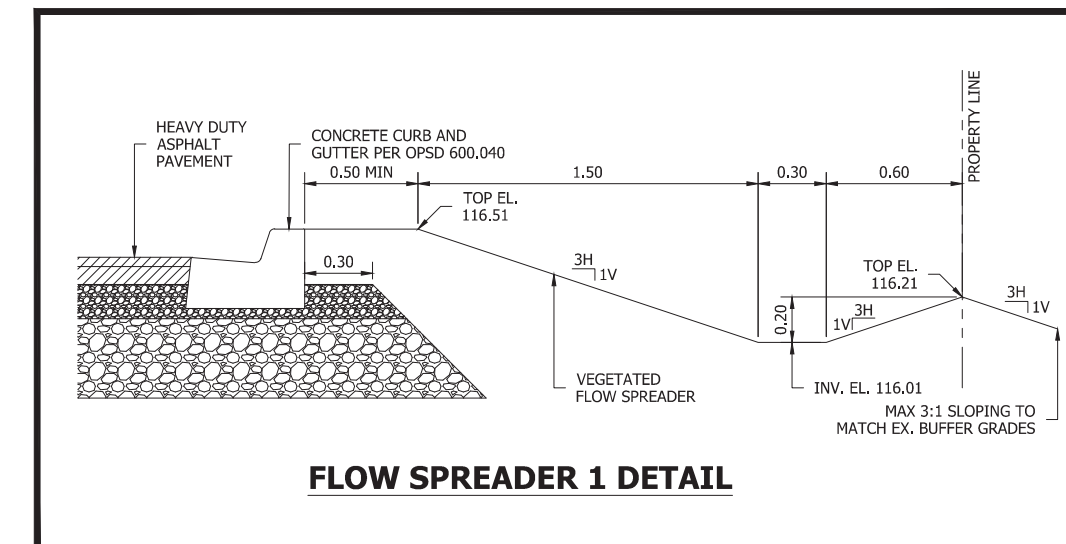
I HAVE REVIEWED THE PLANS FOR THE CONSTRUCTION OF LOT 1-57 LOCATED AT 1720 SHERWOOD FORREST CIRCLE AND HAVE PREPARED THIS PLAN TO INDICATE THE COMPATIBILITY OF THE PROPOSAL TO EXISTING ADJACENT PROPERTIES AND MUNICIPAL SERVICES. IT IS MY BELIEF THAT ADHERENCE TO THE PROPOSED GRADES AS SHOWN WILL PRODUCE ADEQUATE SURFACE DRAINAGE AND PROPER FACILITY OF THE MUNICIPAL SERVICES WITHOUT ANY DETRIMENTAL EFFECT TO THE EXISTING DRAINAGE PATTERNS OR ADJACENT PROPERTIES.

SIGNATURE: 



PAVEMENT STRUCTURE:

- LIGHT DUTY PAVEMENT**
- 40mm HL 3 OR SP 12.5
 - 40mm HL 8 OR SP 19.0
 - 150mm OPSS GRANULAR A OR 20mm CRLS
 - 250mm OPSS GRANULAR B OR 50mm CRLS
- HEAVY DUTY PAVEMENT**
- 40mm HL 3 OR SP 12.5
 - 80mm HL 8 OR SP 19.0
 - 150mm OPSS GRANULAR A OR 20mm CRLS
 - 350mm OPSS GRANULAR B OR 50mm CRLS



REFER TO DRAWING 201



KEY PLAN
1:10,000

LEGEND

- PROPERTY BOUNDARY
- EXISTING WOODLOT
- 10m WIDE NHS BUFFER
- ROAD WIDENING
- NATURAL FEATURE STAKED BY CVC AND CITY (AUGUST 3, 2018)
- TOP OF BANK STAKED BY CVC AND CITY (AUGUST 3, 2018)
- TOP OF BANK FROM R-PE TOPOGRAPHIC SURVEY
- LONG TERM STABLE SLOPE LINE BY DS CONSULTANTS (JULY 2023)
- DEVELOPMENT LIMIT
- EXISTING CONTOUR AND ELEVATION (METRES)
- EXISTING ELEVATION
- PROPOSED ELEVATION
- TOP/BOTTOM OF CURB ELEVATION
- STANDARD CURB AND GUTTER
- SEMI-MOUNTABLE CURB AND GUTTER
- STORM MANHOLE
- SANITARY MANHOLE
- EXISTING STORM MANHOLE
- EXISTING SANITARY MANHOLE
- CATCHBASIN / DOUBLE CATCHBASIN / AREA DRAIN
- INFILTRATION TRENCH
- HYDRANT AND VALVE
- VALVE AND BOX
- TRANSFORMER
- STREET LIGHT
- PEDESTAL
- EXTERNAL OVERLAND FLOW ROUTE
- PROPOSED OVERLAND FLOW ROUTE

REFER TO GRADING SECTIONS 203-205 FOR GRADING CROSS SECTIONS 1-1 TO 12-12

BENCHMARK:
ELEVATIONS ARE REFERRED TO CANADIAN GEODETIC VERTICAL DATUM-1928, AND WERE DERIVED FROM CITY OF MISSISSAUGA BENCHMARK NO. 58, HAVING A PUBLISHED ELEVATION OF 108.293 METRES.

No.	REVISION	DATE	BY
4	FOURTH SUBMISSION	OCT. 7/24	J.S.
3	THIRD SUBMISSION	MAY 24/24	J.S.
2	SECOND SUBMISSION	NOV. 11/23	J.S.
1	FIRST SUBMISSION	OCT. 2/23	J.S.

URBANTECH® Consulting
A Division of Leighton-Zec Ltd.
3760 14th Avenue, Suite 301,
Markham, ON, L3R 3T7
TEL. 905.946.9461 • urbantech.com

1720 SHERWOOD FORREST CIRCLE
CONDOMINIUM DETACHED RESIDENTIAL BLOCK

SHERWOOD FORREST LIMITED PARTNERSHIP
4900 PALLADIUM WAY, UNIT 105
BURLINGTON, ON, L7M 0W7
(905)-336-5545

Region of Peel
Working for you

MISSISSAUGA

GRADING PLAN (PART 2)

PROJECT #: 23-747 DRAWING: C202

DESIGNED: J.S. CHECKED: D.Z.

DRAWN: J.S. DATE: AUGUST 2023

SCALE: 1:500