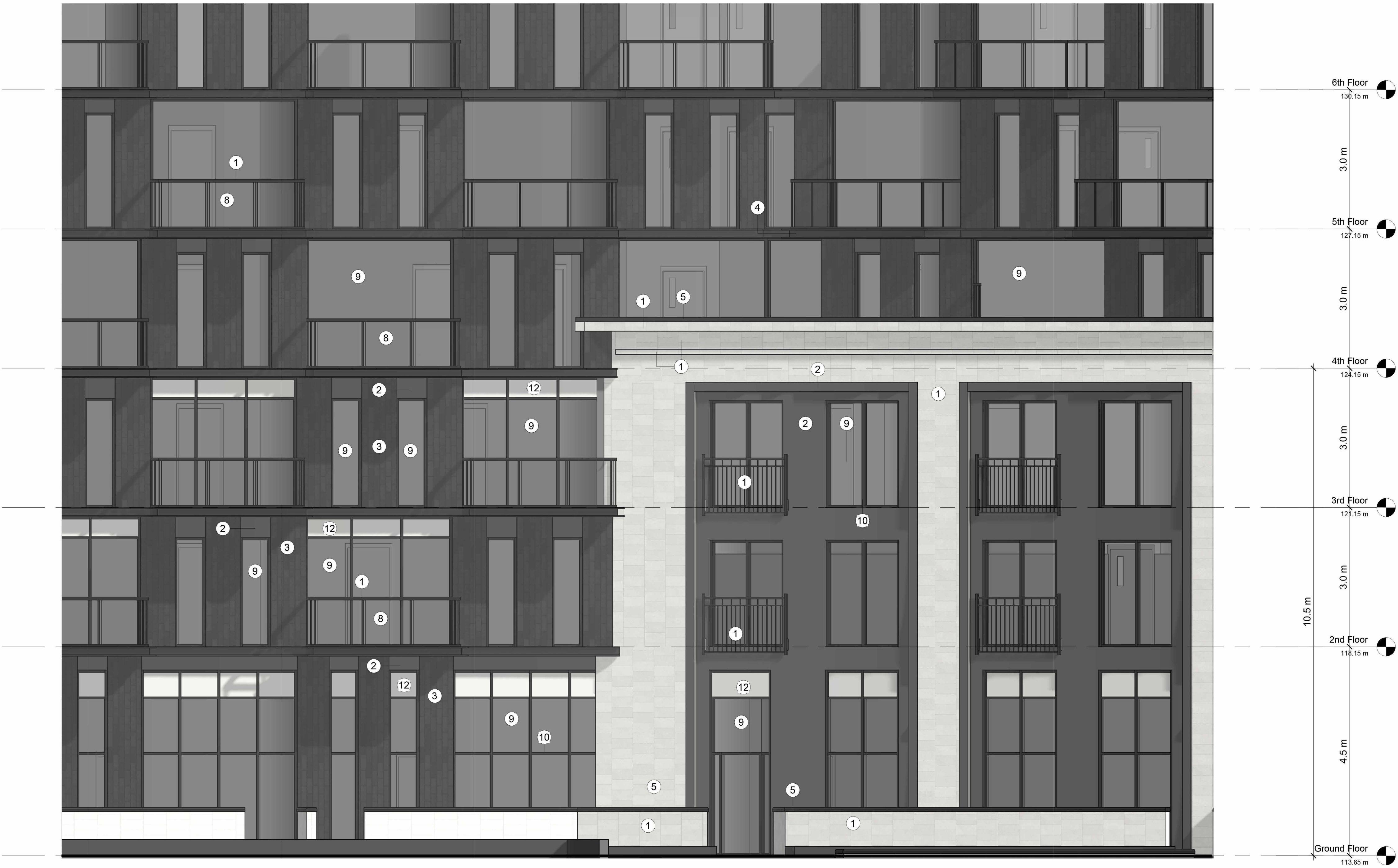


3016
KIRWIN AVE

3016-3022 Kirwin Avenue
Mississauga - ON - Canada

© Copyright KFA Architects and Planners Inc. all rights reserved. No part of this document whether printed form or supplied as digital data may be reproduced, stored in a retrieval system or transmitted in any form or by any means, mechanical photocopying, recording or otherwise without the prior written permission of KFA Architects and Planners Inc. All dimensions to be checked on site by the contractor. Drawings are not to be scaled, and any discrepancies are to be reported to the Architect before proceeding with the work.

No.	Description	Date
10	ISSUED FOR OPA/ZBA	2022/12/22
11	ISSUED FOR OPA/ZBA	2023/11/06



1 Detailed East Elevation
1 : 50

MATERIAL LEGEND

- LIMESTONE PANELS
- METAL PANELING DARK / LIGHT GREY
- PRECAST VERTICAL BRICK PANELING DARK GREY FINISHING
- ALUMINUM DARK GREY SLAB EDGE "C" SHAPE PROFILE
- ALUMINUM DARK GREY PARAPET CAP
- GLASS CANOPY WITH METAL STRUCTURE
- METAL RAILING
- GLASS + ALUM. RAILING - FROSTED GLAZING
- WINDOW WALL - CLEAR GLAZING
- WINDOW WALL - ANODIZED ALUM. DARK GREY MULLION
- WINDOW WALL DARK GREY METAL LOUVER
- WINDOW WALL DARK/LIGHT GREY SPANDREL PANEL
- WINDOW WALL - ANODIZED ALUMINUM + CLEAR GLAZING SLIDING DOOR
- 3D ALUM. SIGNAGE ANCHORED TO THE CANOPY
- WALL MOUNTED ALUM. PLATE INDICATING ARCH. DESIGNER (DIM 0.3m X 0.5m)
- BI-DIRECTIONAL WALL MOUNTED CYLINDER LIGHTS



197 SPADINA AVE - SUITE 500
TORONTO - ON - M5T 2C8
416.633.6226
www.kfarchitecture.com

Project No: 20009

Scale:

Date: Feb. 04, 2020

Drawn by: FC

Drawing Title

DETAILED NORTH
ELEVATION

Drawing
Number

A209