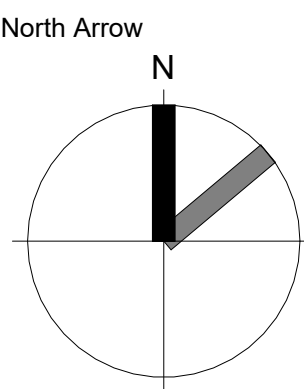
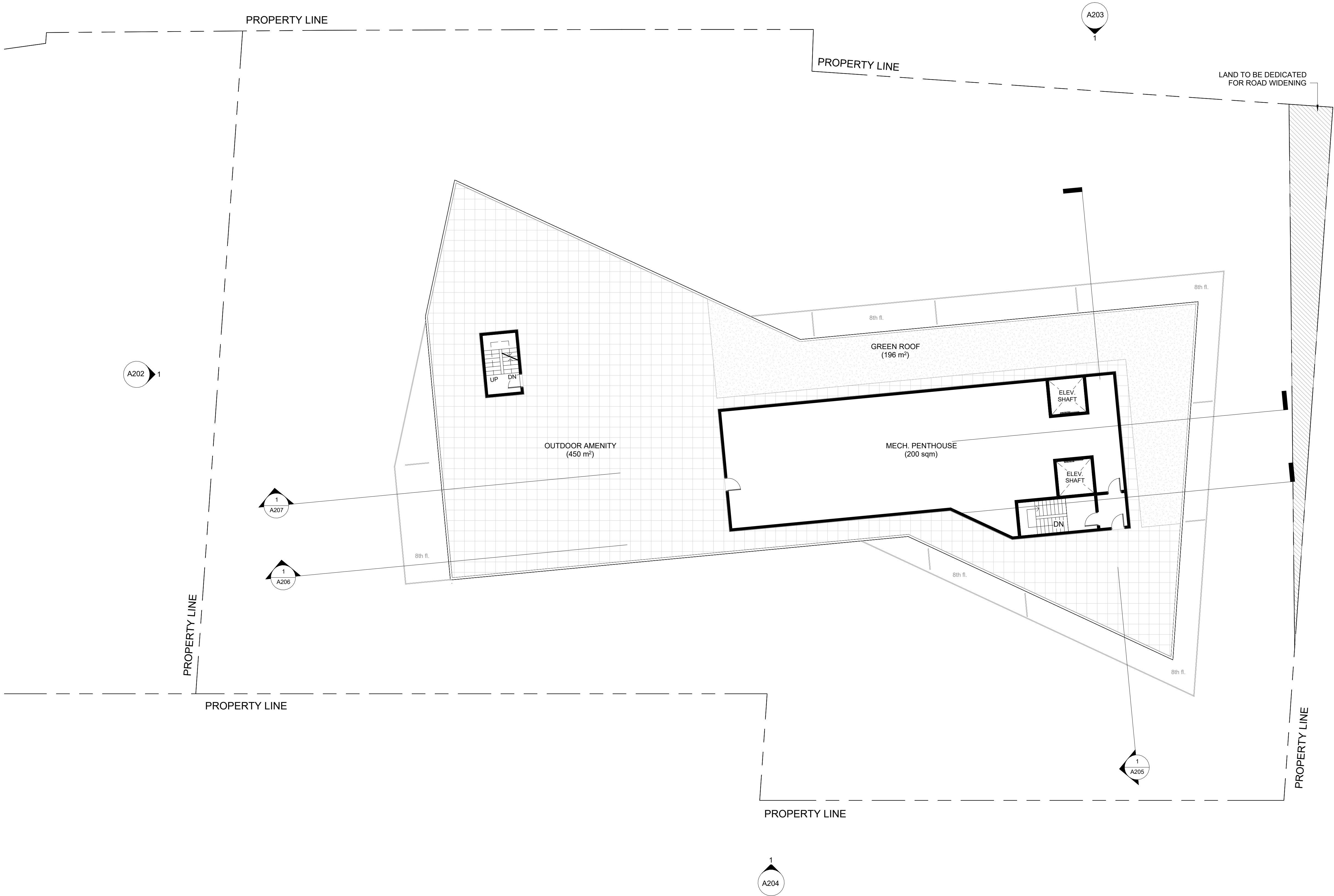


3016
KIRWIN AVE

3016-3022 Kirwin Avenue
Mississauga - ON - Canada

© Copyright KFA Architects and Planners Inc., all rights reserved. No part of this document whether printed form or supplied as digital data may be reproduced, stored in a retrieval system or transmitted in any form or by any means, mechanical photocopying, recording or otherwise without the prior written permission of KFA Architects and Planners Inc. All dimensions to be checked on site by the contractor. Drawings are not to be scaled, and any discrepancies are to be reported to the Architect before proceeding with the work.

No.	Description	Date
1	ISSUED FOR OPA/ZBA	2021/03/10
10	ISSUED FOR OPA/ZBA	2022/12/22
11	ISSUED FOR OPA/ZBA	2023/11/06



Stamp



architects +
planners inc.

197 SPADINA AVE - SUITE 500
TORONTO - ON - M5T 2C8
416.633.6226
www.kfarchitecture.com

Project No: 20009

Scale: 1 : 150

Date: Feb. 04, 2020

Drawn by: FC

Drawing Title

MECHANICAL
FLOOR PLAN

Drawing
Number

A111