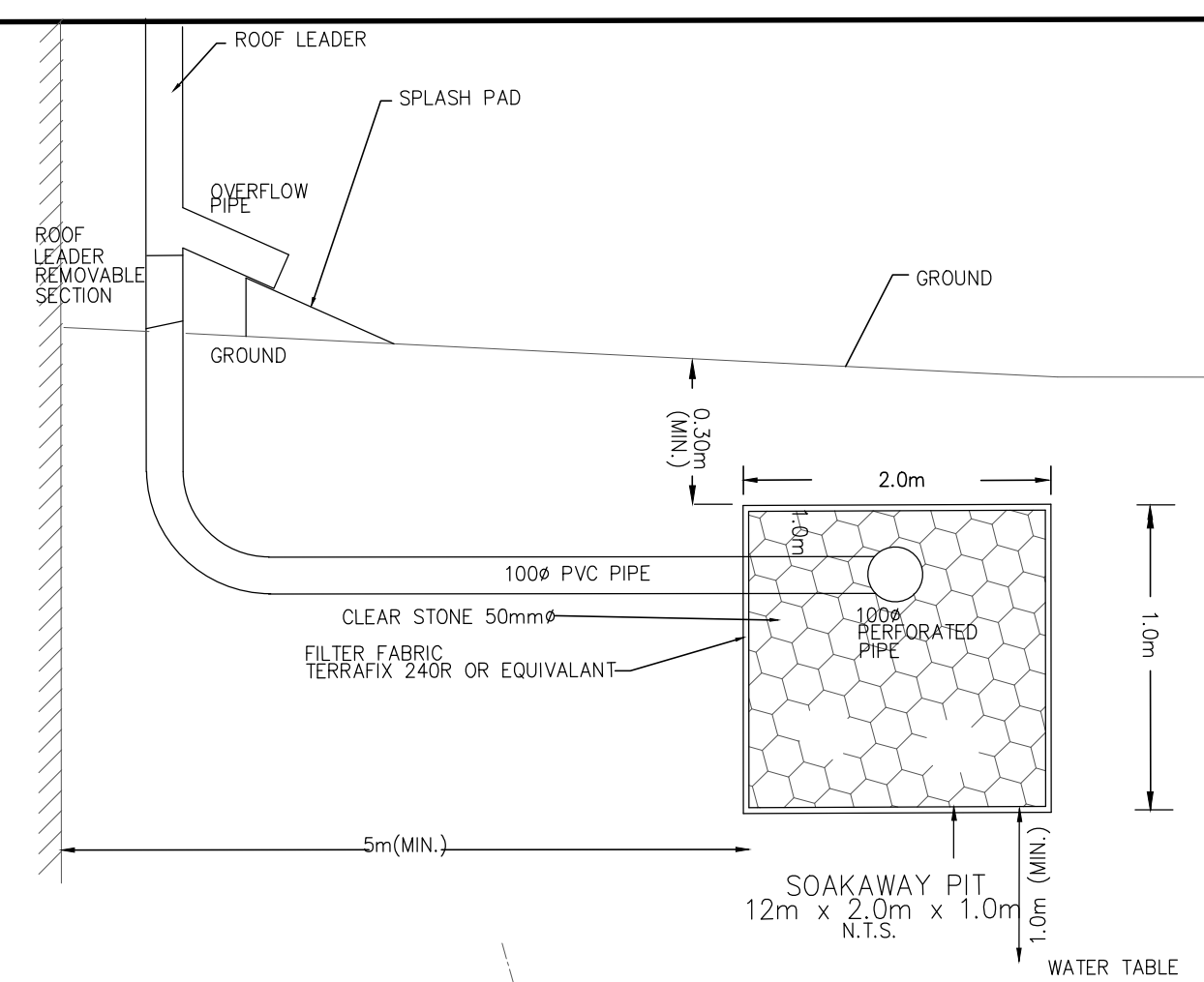
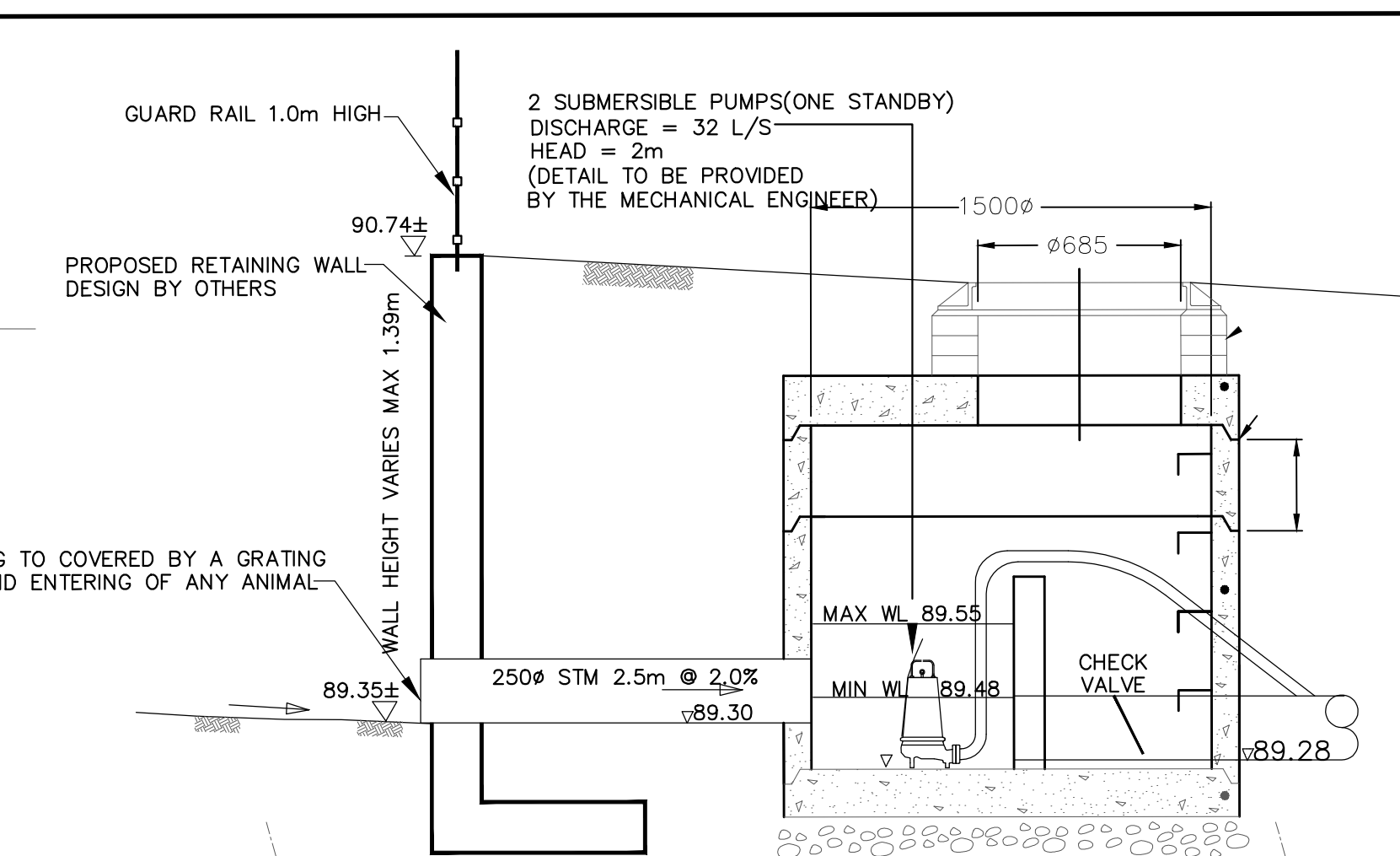


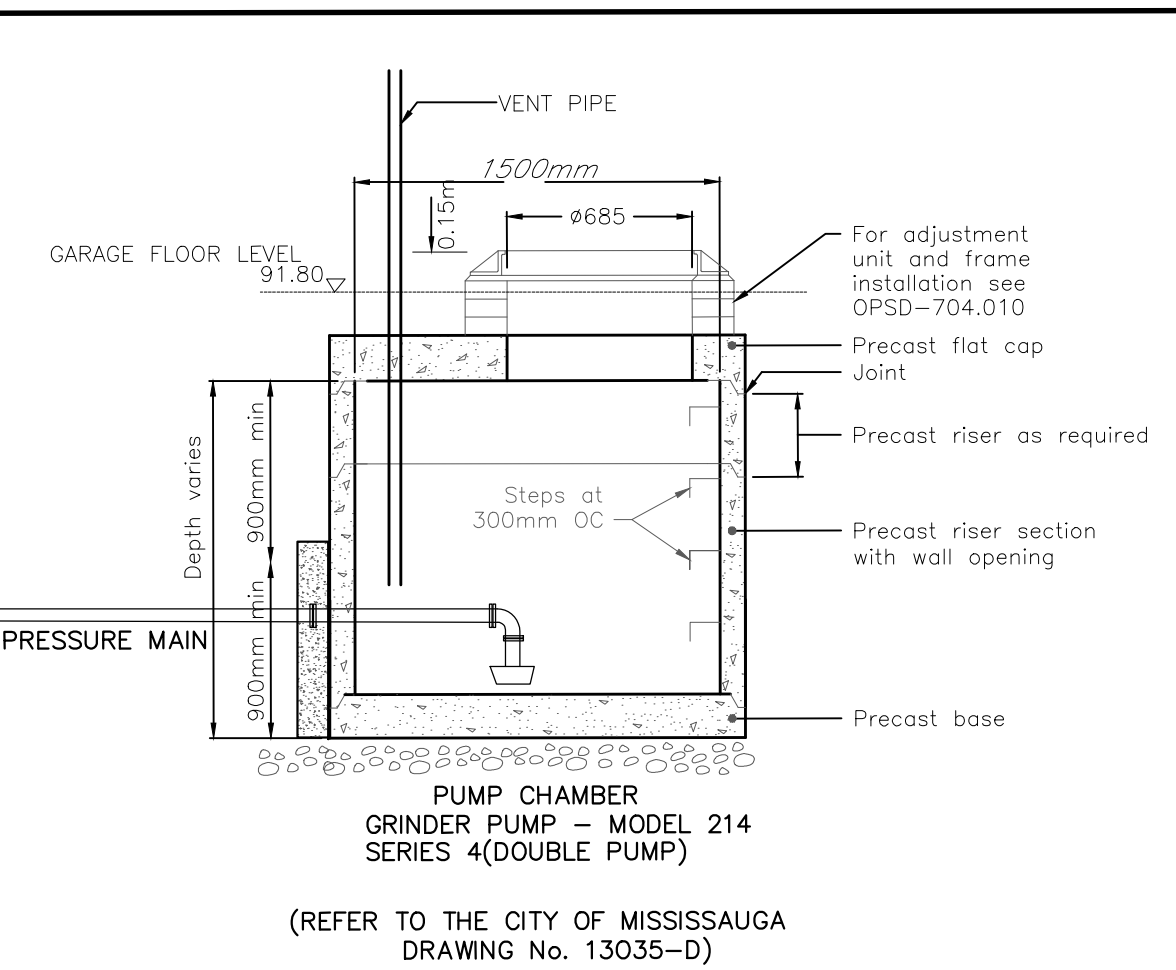
KEY PLAN



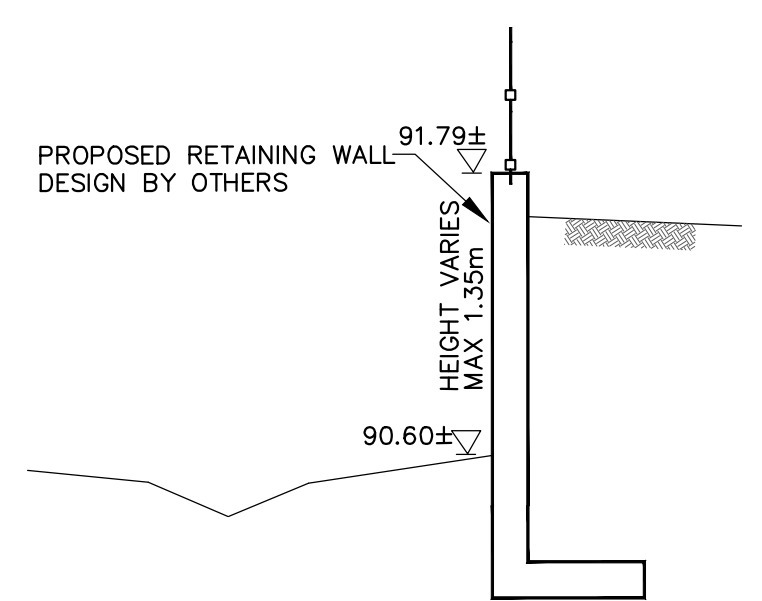
SOAKAWAY PIT DETAIL



DETAIL 'A'

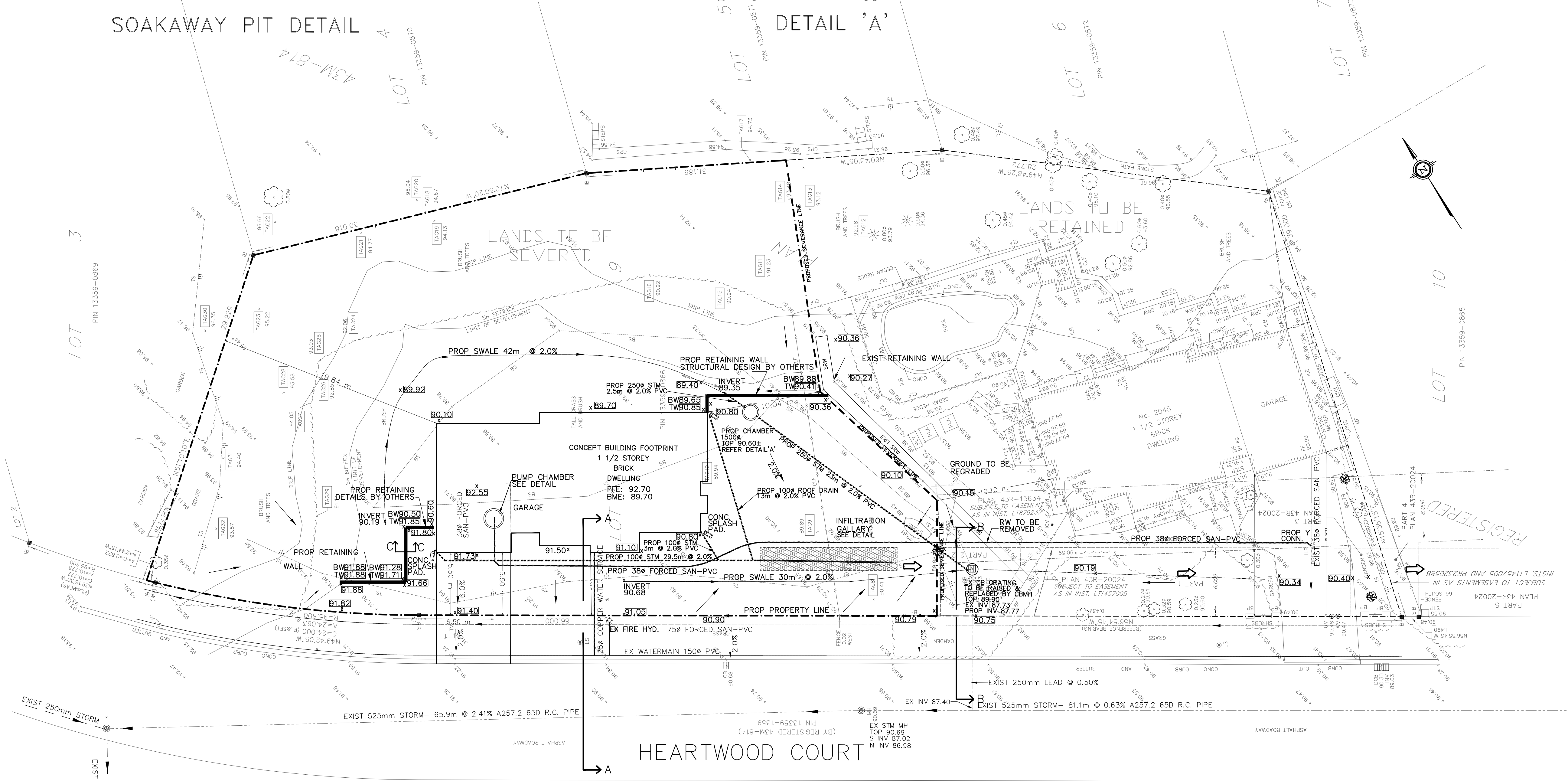


PUMP CHAMBER GRINDER PUMP - MODEL 214 SERIES 4(DOUBLE PUMP)



SECTION CC

NOTE FOR RETAINING WALL: RAILING WILL BE REQUIRED WHERE THE HEIGHT OF RETAINING WALL MORE THAN 0.60m.



LEGEND

EXISTING GRADE	90.38 ^x
PROPOSED GRADE	TW90.98 ^x
PROPOSED RETAINING WALL TOP	
EXIST. OVERLAND FLOW DIRECTION	~
PROP. MINOR OVERLAND FLOW DIRECTION	~
PROP. MAJOR OVERLAND FLOW DIRECTION	~
STONE RETAINING WALL	SWR
PROPOSED BOUNDARY	---
PROPOSED SEVERANCE LINE	---
PROPOSED SEVERANCE LINE	---

BENCH MARK DATUM
ELEVATIONS ARE REFERRED TO THE CITY OF MISSISSAUGA DATUM, PRE-1978 G.S.C.
RE-ADJUSTMENT, BENCH MARK No. 620, HAVING A PUBLISHED ELEVATION OF 98.900 METRES.

NO.	REVISION	DATE	INIT.
1	REVISED AS PER THE SITE PLAN CHANGES	JAN 16, 23	INIT.
1	SUBMISSION FOR ZONING APPROVAL	NOV 01, 21	MFT

BENCHMARK:
TOPOGRAPHICAL INFORMATION SHOWN HEREON BASED ON TOPOGRAPHIC PLAN BY MAM GEOMETRICS ONTARIO LTD., ONTARIO LAND SURVEYORS DATED JANUARY 19, 2017 - PROJECT No. 17M-00089-00. ELEVATIONS ARE IN METRES AND ARE DERIVED FROM CITY OF MISSISSAUGA CONTROL MONUMENT No. 079023030, A BRASS CAP SET AT THE TOP OF A CONCRETE CYLINDER LOCATED 8M WEST OF THE CENTRE LINE OF NINTH LINE AND 27M NORTH OF ELEVATION = 187.429m. ELEVATIONS ARE GEODETIC AND REFERRED TO THE CANADIAN GEODETIC VERTICAL DATUM (1928), PRE-1978 ADJUSTMENT.

LEGEND	
○	LIGHT POLE
○	TRAFFIC LIGHT
○	SIGN
○	BELL POLE
○	WATERMANS
○	HYDRO POLE
○	BASMAINS
○	BELL CABLES
○	CAP OR PLUG
○	MANHOLE EXISTING
○	MANHOLE PROPOSED
○	CATCHBASIN EXISTING
○	CATCHBASIN PROPOSED
○	STANDARD IRON BAR

DRAFTING	
MI	DESIGN
MI	CHECKED BY
MI	PROJ. SUPV.

CITY OF MISSISSAUGA REGION OF PEEL
PREMIER ENGINEERING SOLUTIONS
CIVIL ENGINEERS
3294 ALPACA AVENUE, MISSISSAUGA ONTARIO L5M 7V3
PHONE: (905) 817-1294 FAX: (905) 817-1299

PROPOSED SEVERANCE AND CONCEPTUAL LAYOUT OF A SINGLE FAMILY HOUSE
2045 HERATWOOD CT. MISSISSAUGA, ON
SITE SERVICING AND GRADING PLAN

FIELD NOTES	
DATE	SCALE 1:200
DWG No.	HEATWOOD-GSP
MUN. REF. No.	REV.
File No. OZ 21-18W7	2