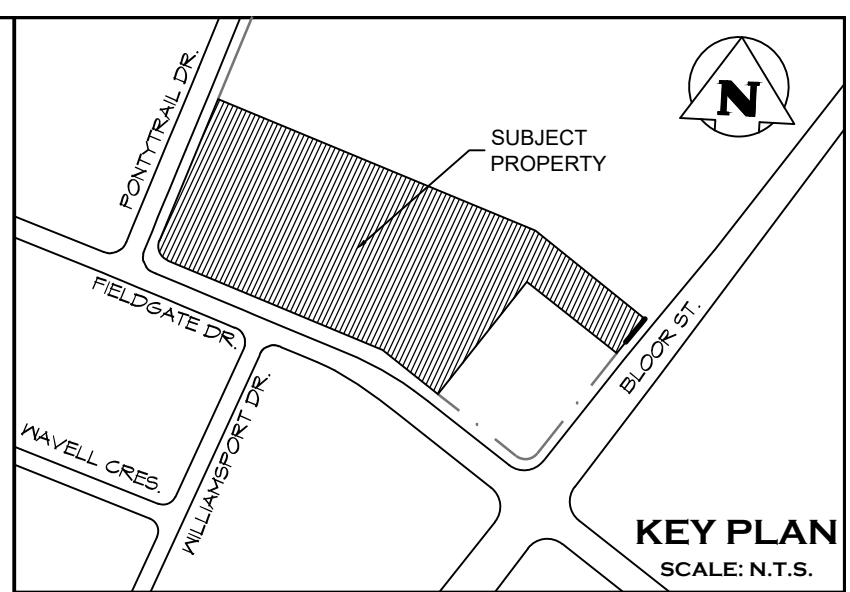


LEGEND

---	PROPERTY BOUNDARY	---	UNDERGROUND SERVICES - SEE ENG. DWGS
---	TREE PROTECTION FENCE	X	EXISTING DECIDUOUS TREE TO BE REMOVED
---	EXISTING FENCE	X	EXISTING CONIFEROUS TREE TO BE REMOVED
---	EXISTING CHAINLINK FENCE	O	EXISTING DECIDUOUS TREE TO BE RETAINED OR PROTECTED
---	EXISTING PRIVACY FENCE	O	EXISTING CONIFEROUS TREE TO BE RETAINED OR PROTECTED
○	EXISTING HYDRO POLE	14	TREE ID. #
◇	EXISTING FIRE HYDRANT		
□	EXISTING LIGHT STANDARD		
+	EXISTING WATER VALVE		
•	EXISTING SIGN		



- NOTES:**
- FOR SERVICES, GRADING AND DRAINAGE INFORMATION SEE ENGINEERING DRAWINGS.
 - THE CONTRACTOR SHALL CHECK AND VERIFY ALL EXISTING AND PROPOSED GRADES AND CONDITIONS OF THE PROJECT AND IMMEDIATELY REPORT ANY DISCREPANCIES TO THE CONSULTANT BEFORE PROCEEDING WITH ANY REMOVALS.
 - TREE REMOVALS SHALL CONFORM WITH THE MIGRATORY BIRDS CONVENTION ACT AND MUNICIPAL BY-LAWS.

ID No.	Botanical Name	Common Name	DBH (cm) (Diameter at Breast Height)	Canopy Radius (m)	Condition	Tree Protection Zone (m)	Ownership	Directive	Comment
1	<i>Acer saccharum</i>	Sugar Maple	15	2	Poor	1.5	City	Remove	Dead branches in canopy. Thinning already occurred. Remove due to condition and construction
2	<i>Tilia americana</i>	Basswood	30	4	Poor	1.8	Private	Remove	Dead branches in canopy. Remove due to construction
3	<i>Gleditsia triacanthos</i>	Honey Locust	7	0.75	Fair	1.2	City	Preserve	Recently installed tree.
4	<i>Gleditsia triacanthos</i>	Honey Locust	7	0.75	Fair	1.2	City	Transplant	Recently installed tree. Can be transplanted and re-located to save tree.
5	<i>Acer platanoides</i>	Norway Maple	25	4	Poor	1.8	City	Preserve	One sided canopy overhanging road. Dead branches in canopy. Pruning of deadwood recommended.
6	<i>Gymnocladus dioica</i>	Kentucky Coffeetree	7	0.75	Fair	1.2	City	Remove	Recently installed tree. Remove due to condition and construction
7	<i>Gymnocladus dioica</i>	Kentucky Coffeetree	7	0.5	Fair	1.2	City	Remove	Recently installed tree. Dieback at tips of branches Remove due to condition and construction
8	<i>Ulmus spp.</i>	Elm spp.	18	4	Fair	1.5	City	Preserve	
9	<i>Tilia americana</i>	Basswood	30	4.5	Fair	1.8	Private	Remove	Leaning to the east over parking lot.
10	<i>Acer platanoides</i>	Norway Maple	15	2	Fair	1.5	City	Remove	Deadwood in canopy. Split in trunk from base to 2 meters above grade.
11	<i>Ulmus spp.</i>	Elm spp.	32	4	Fair	2.4	City	Preserve	
12	<i>Tilia americana</i>	Basswood	12	4	Fair	1.5	City	Remove	Multi stem at base. 10 stems all under 12cm DBH.
13	<i>Tilia americana</i>	Basswood	50	5	Fair	3.0	City	Remove	
14	<i>Tilia americana</i>	Basswood	50	4	Poor	3.0	Private	Remove	Dead wood in canopy. Main leader dead.
15	<i>Tilia americana</i>	Basswood	30	4	Fair	1.8	Neighbour	Preserve	
16	<i>Tilia americana</i>	Basswood	40	5	Fair	2.4	Neighbour	Preserve	
17	<i>Tilia americana</i>	Basswood	50	6	Fair	3.0	Neighbour	Preserve	
18	<i>Tilia americana</i>	Basswood	60	6	Fair	3.6	Neighbour	Preserve	
19	<i>Tilia americana</i>	Basswood	40	6	Fair	2.4	Neighbour	Preserve	
20	<i>Tilia americana</i>	Basswood	40	6	Fair	2.4	Neighbour	Preserve	
21	<i>Tilia americana</i>	Basswood	45	6	Fair	3.0	Neighbour	Preserve	
22	<i>Pinus nigra</i>	Austrian Pine	50	4	Poor	3.0	Neighbour	Preserve	Top of crown dead.
23	<i>Pinus nigra</i>	Austrian Pine	50	4	Fair	3.0	Neighbour	Preserve	Dead branches in canopy.
24	<i>Pinus nigra</i>	Austrian Pine	60	5	Fair	3.6	Neighbour	Preserve	
25	<i>Pinus nigra</i>	Austrian Pine	40	5	Fair	2.4	Private	Remove	Remove due to conflicts with proposed construction
26	<i>Pinus nigra</i>	Austrian Pine	42	5	Fair	3.0	Private	Remove	Thin canopy. Remove due to conflicts with proposed construction
27	<i>Tilia americana</i>	Basswood	30	3	Fair	1.8	Private	Preserve	Multi stem at base with 3 stems
28	<i>Pinus nigra</i>	Austrian Pine	23	3	Fair	1.8	Private	Preserve	
29	<i>Acer saccharinum</i>	Silver maple	59	5	Poor	3.6	Neighbour	Preserve	Dead branches in canopy. Cavity at 2 meters
30	<i>Pinus resinosa</i>	Red Pine	42	5	Fair	3.0	Neighbour	Preserve	
31	<i>Pinus resinosa</i>	Red Pine	55	6	Fair	3.6	Neighbour	Preserve	
32	<i>Pinus resinosa</i>	Red Pine	19	4	Poor	1.5	Neighbour	Preserve	Dead branches in canopy
33	<i>Pinus resinosa</i>	Red Pine	38	4	Fair	2.4	Neighbour	Preserve	
34	<i>Acer saccharinum</i>	Silver maple	32	5	Poor	2.4	Neighbour	Preserve	75% crown dead
35	<i>Pinus resinosa</i>	Red Pine	35	4	Poor	2.4	Neighbour	Preserve	Dead branches in canopy.
36	<i>Pinus resinosa</i>	Red Pine	75	6	Fair	4.8	Neighbour	Preserve	
37	<i>Pinus resinosa</i>	Red Pine	46	6	Fair	3.0	Neighbour	Preserve	
38	<i>Gleditsia triacanthos</i>	Honey Locust	26	4	Fair	1.8	Neighbour	Preserve	
39	<i>Pinus resinosa</i>	Red Pine	26	4	Fair	1.8	Private	Preserve	
40	<i>Pinus resinosa</i>	Red Pine	24	4	Poor	1.8	Private	Preserve	Thin canopy
41	<i>Pinus resinosa</i>	Red Pine	47	6	Fair	3.0	Private	Preserve	
42	<i>Fraxinus spp.</i>	Ash spp.	0	0	Dead	N/A	Neighbour	Preserve	Dead ash tree. Tree should be removed by neighbouring property owner as it is offsite.
43	<i>Fraxinus spp.</i>	Ash spp.	19	3	Poor	1.5	Neighbour	Preserve	Dying Ash
44	<i>Fraxinus spp.</i>	Ash spp.	16	2.5	Poor	1.5	Neighbour	Preserve	Dying Ash
45	<i>Tilia americana</i>	Basswood	7	1	Fair	1.2	Neighbour	Preserve	
46	<i>Pinus resinosa</i>	Red Pine	48	5	Fair	3.0	Private	Remove	Remove due to conflicts with proposed construction
47	<i>Pinus resinosa</i>	Red Pine	32	5	Fair	2.4	Private	Remove	Remove due to conflicts with proposed construction
48	<i>Pinus resinosa</i>	Red Pine	38	5	Fair	2.4	Private	Remove	Remove due to conflicts with proposed construction
49	<i>Tilia americana</i>	Basswood	7	1	Fair	1.2	Neighbour	Preserve	
50	<i>Pinus resinosa</i>	Red Pine	38	5	Fair	2.4	Private	Remove	Remove due to conflicts with proposed construction
51	<i>Pinus resinosa</i>	Red Pine	37	5	Fair	2.4	Private	Remove	Remove due to conflicts with proposed construction
52	<i>Tilia americana</i>	Basswood	7	1	Fair	1.2	Neighbour	Preserve	
53	<i>Gleditsia triacanthos</i>	Honey Locust	8	1.5	Fair	1.2	Neighbour	Preserve	
54	<i>Gleditsia triacanthos</i>	Honey Locust	8	0.5	Fair	1.2	Neighbour	Preserve	
55	<i>Gleditsia triacanthos</i>	Honey Locust	15	3	Fair	1.5	Neighbour	Preserve	
56	<i>Gleditsia triacanthos</i>	Honey Locust	11	1.5	Fair	1.5	Neighbour	Preserve	
57	<i>Gleditsia triacanthos</i>	Honey Locust	39	4	Poor	2.4	Private	Remove	Growing in sidewalk in front of building. Remove due to conflicts with construction
58	Dead	Dead	0	0	Dead	N/A	Private	Remove	Dead. Remove due to condition

TREE INVENTORY AND ASSESSMENT CHART

1 TREE INVENTORY AND ASSESSMENT PLAN

1:300

1. THIS DRAWING IS THE EXCLUSIVE PROPERTY OF C.F. GROZIER & ASSOCIATES INC. AND THE MODIFICATION AND/OR REPRODUCTION OF ANY PART OF THIS DRAWING IS STRICTLY PROHIBITED WITHOUT WRITTEN AUTHORIZATION FROM THIS OFFICE.
2. THE DIGITAL FILES CONTAIN INTELLECTUAL AND DIGITAL DATA PROPERTY THAT IS THE EXCLUSIVE PROPERTY OF C.F. GROZIER & ASSOCIATES INC.
3. THE CONTRACTOR SHALL VERIFY ALL DIMENSIONS, LEVELS, AND DATUMS ON SITE AND REPORT ANY DISCREPANCIES OR OMISSIONS TO C.F. GROZIER & ASSOCIATES INC. PRIOR TO CONSTRUCTION.
4. THIS DRAWING IS TO BE READ AND UNDERSTOOD IN CONJUNCTION WITH ALL OTHER PLANS AND DOCUMENTS APPLICABLE TO THIS PROJECT.
5. ALL EXISTING UNDERGROUND UTILITIES TO BE VERIFIED IN THE FIELD BY THE CONTRACTOR PRIOR TO CONSTRUCTION.
6. DO NOT SCALE DRAWINGS.

NOTES:

1. ALL DIMENSIONS ARE IN METERS UNLESS OTHERWISE NOTED.

No.	ISSUE	DATE: YYYY/MM/DD
0	ISSUED FOR 1st SUBMISSION ZBA	2024/08/16

ARBORIST

CERTIFIED ARBORIST

MATTHEW CAMPBELL, OALA, CSLA
CERTIFIED ARBORIST (ISA 0N-3008-A)

Project

FIELDGATE PLAZA
CITY OF MISSISSAUGA

Drawing

TREE PRESERVATION PLAN

Drawn By: S.Z./K.C. Design By: K.C./S.K. Project: 2655-7075

Check By: M.C. Check By: Drawing: TPP-2