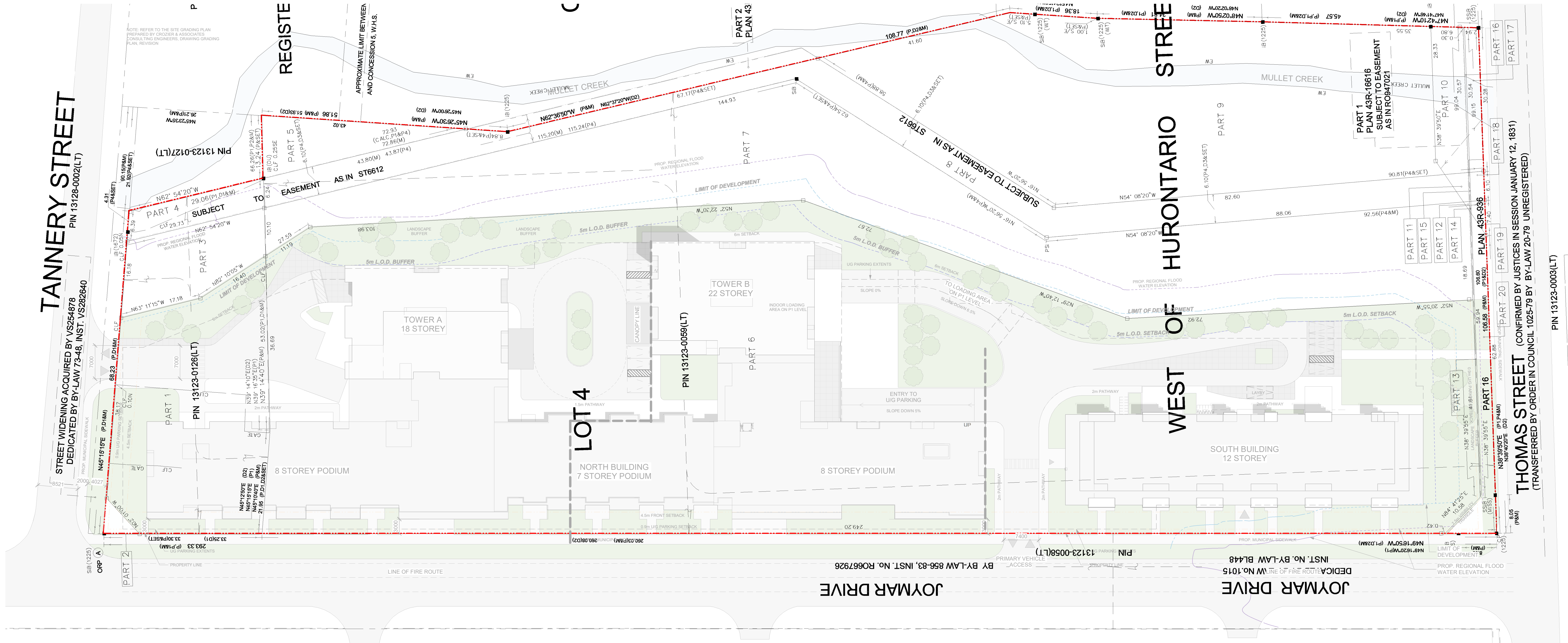


TANNERY STREET

PIN 13128-0002(LT)

STREET WIDENING ACQUIRED BY VS254878
DEDICATED BY BY-LAW 73-48, INST. VS282840



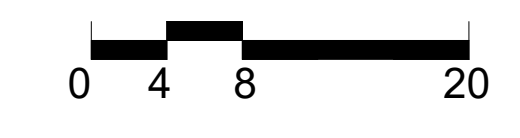
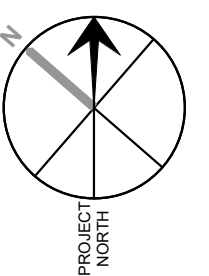
NOTE: REFER TO THE SITE GRADING PLAN PREPARED BY CROZIER & ASSOCIATES CONSULTING ENGINEERS, DRAWING GRADING PLAN REVISION

APPROXIMATE LIMIT BETWEEN AND CONVESSIONS, W.H.S.

THOMAS STREET (CONFIRMED BY JUSTICES IN SESSION JANUARY 12, 1831)
(TRANSFERRED BY ORDER IN COUNCIL 1025-79 BY BY-LAW 20-79 UNREGISTERED)

PIN 13123-0003(LT)

DRAFT FOR DISCUSSION ONLY



Scale 1 : 400 FULL SIZE
Scale 1 : 800 HALF SIZE