

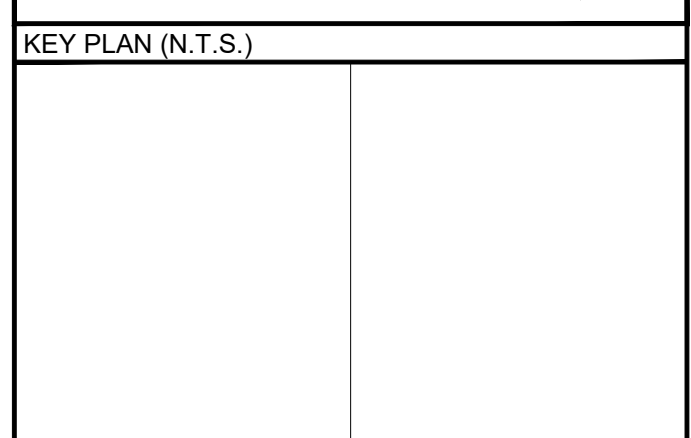
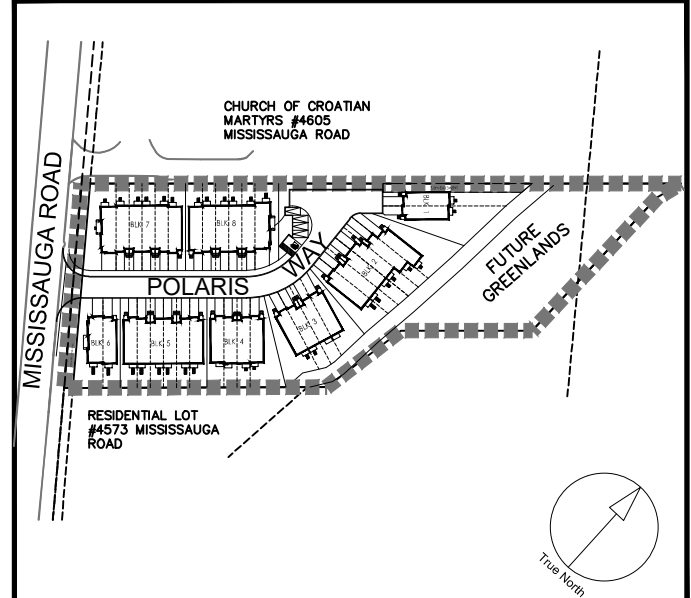
CLIENT
KINGRIDGE DEVELOPMENTS
1660 NORTH SERVICE ROAD EAST
SUITE 109-B
OAKVILLE ON. L6H 7G3
PHONE: (416) 277-7466
EMAIL: INFO@KINGRIDGEDEVELOPMENTS.CA

COPYRIGHT
This drawing has been prepared solely for the intended use, thus any reproduction or distribution for any purpose other than authorized by ARCADIS is forbidden. Written dimensions shall have precedence over scaled dimensions. Contractors shall verify and be responsible for all dimensions and conditions on the job, and ARCADIS shall be informed of any variations from the dimensions and conditions shown on the drawing. Shop drawings shall be submitted to ARCADIS for general conformance before proceeding with fabrication.
ARCADIS PROFESSIONAL SERVICES (CANADA) INC.
is a member of ARCADIS Group of companies

ISSUES		
No.	DESCRIPTION	DATE
1.	SUBMITTED FOR OPAZONING/SPA	FEB. 23, 2024
2.	RE-SUBMITTED FOR OPAZONING/SPA	DEC 18, 2024

LEGEND

- PROPERTY LINE
- TRENCH DRAINAGE AREA
- INFILTRATION TRENCH
- ROOF ID NUMBER
- CONTRIBUTING ROOFTOP AREA
- CONTRIBUTING ROOFTOP AREA
- 300mm TOPSOIL AREA
- RUNOFF COEFFICIENT
- TOTAL DRAINAGE AREA



PROJECT
1786 POLARIS WAY
CITY OF MISSISSAUGA

PROJECT NO:
145121

DRAWN BY:
JF

CHECKED BY:
BH/AK

PROJECT MGR:
SR

APPROVED BY:
AK

SHEET TITLE
**LOW IMPACT
DEVELOPMENT PLAN**

SHEET NUMBER
LID-01

ISSUE
01

SITE PLAN INFORMATION PIN DESIGN 6395 JANE ST. SUITE 202 VAUGHAN, ONTARIO PHONE: (905) 738-3177 EMAIL: INFO@PINDESIGN.COM	SURVEY INFORMATION SCHAEFFER DZALDOV PURCELL LTD. 64 JARDIN DRIVE CONCORD, ONTARIO PHONE: (905) 731-0101
BENCHMARK INFORMATION: ELEVATIONS ARE GEODETIC AND ARE DERIVED FROM CITY OF MISSISSAUGA BENCHMARK No. 876, HAVING AN ELEVATION = 18.702 METRES	
SCALE: 1:300 0 5.0m 10.0m	

File Location: J:\Toronto\145121_1786_Polaris\7.0_Production\7.03_Design\04_Civil\Sheet\LID-01-01.dwg - SWM - Waterbalance.dwg Last Saved: June 27, 2024 by michaeli Plotted: December 16, 2024 4:24:04 PM by L. Michael