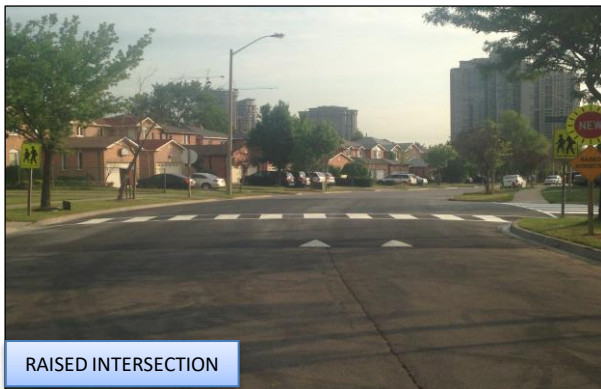
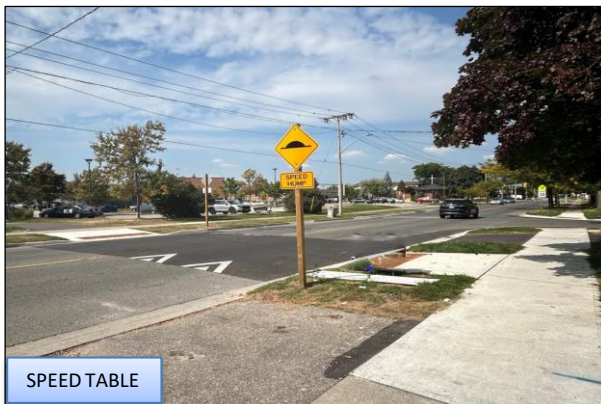
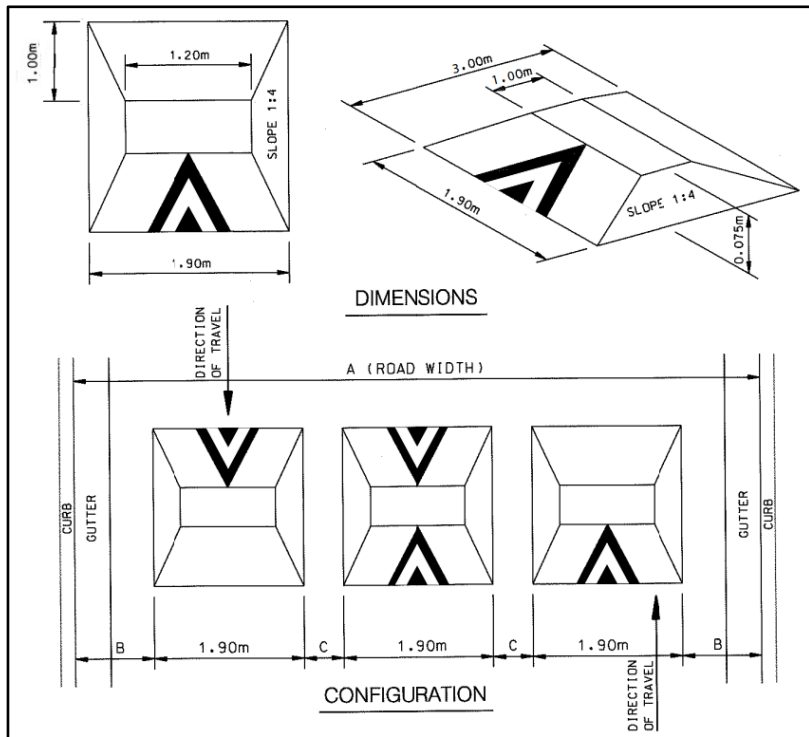


# TRAFFIC CALMING DEVICES



# SPEED CUSHION DESIGN



- Raised area on a roadway that does not cover the entire width of the road
- Designed to accommodate wide wheel base of emergency vehicles (easy passage)
- Designed to discourage drivers from travelling at excessive speeds
- A series of speed cushions is more effective than a single installation
- Use on neighbourhood roads

# Glengarry Road



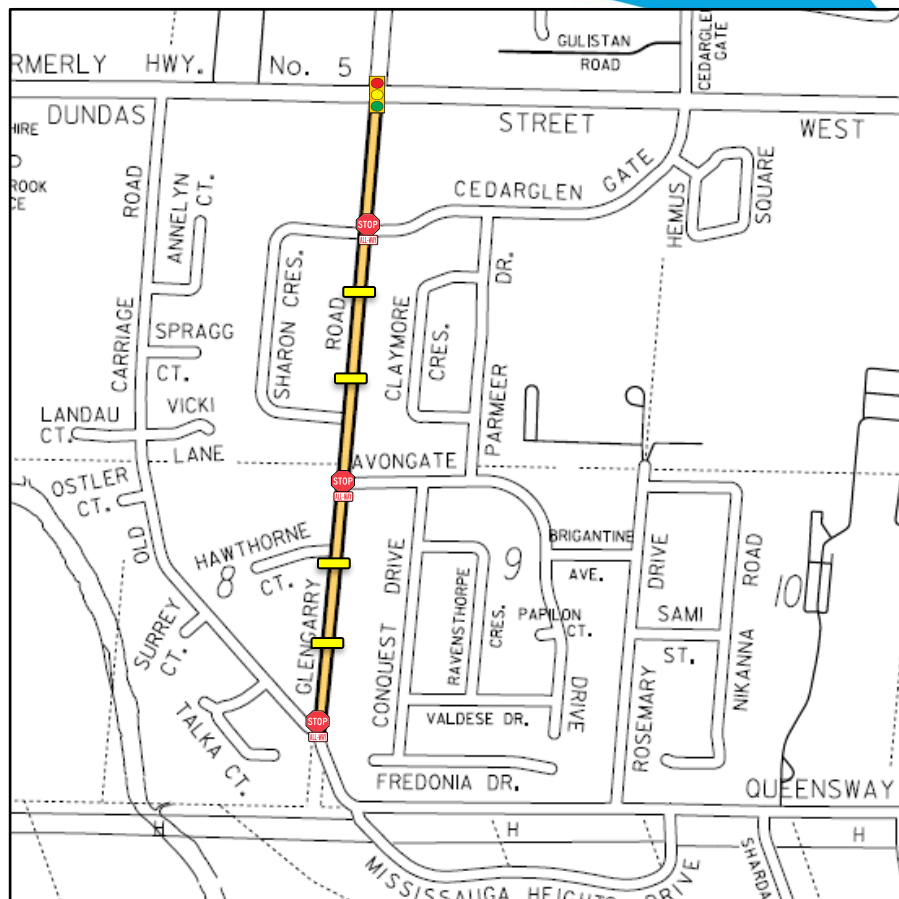
Existing Traffic Signal  
Location



Existing All-Way  
Stop Locations



Proposed Speed  
Cushion Locations





## Glengarry Road

Between Dundas Street West  
and Avongate Drive



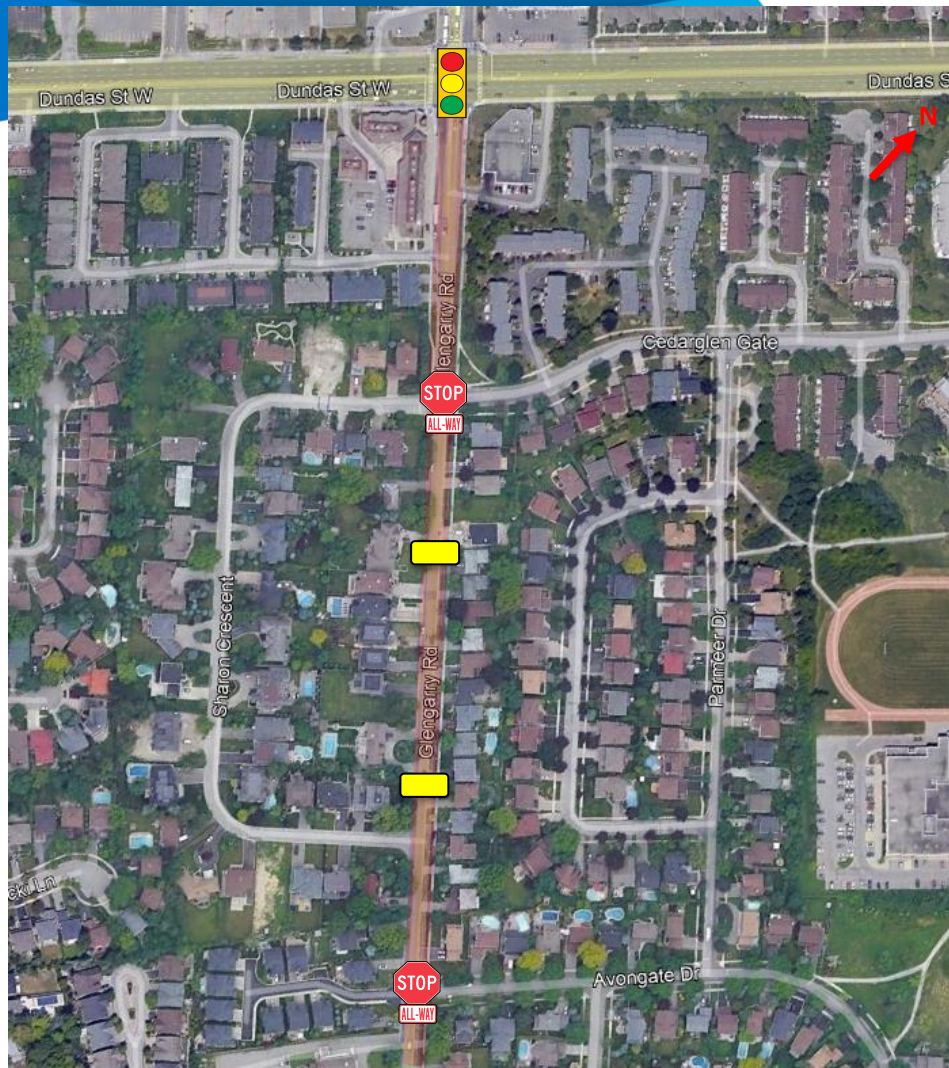
Existing Traffic Signal  
Location



Existing All-Way  
Stop Locations



Proposed Speed  
Cushion Locations



## Glengarry Road

Between Avongate Drive  
and Old Carriage Road



Existing All-Way  
Stop Locations



Proposed Speed  
Cushion Locations

