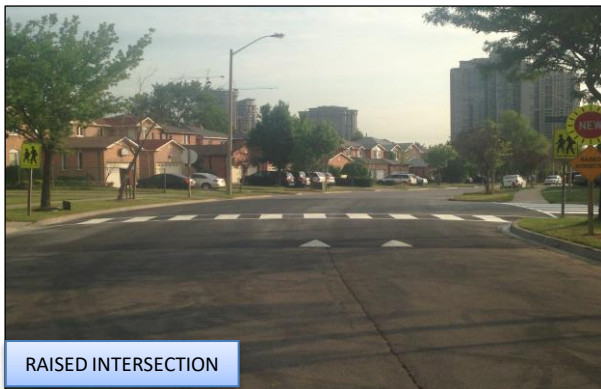
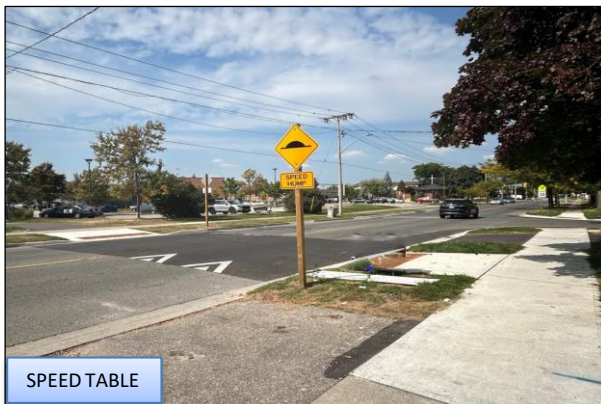
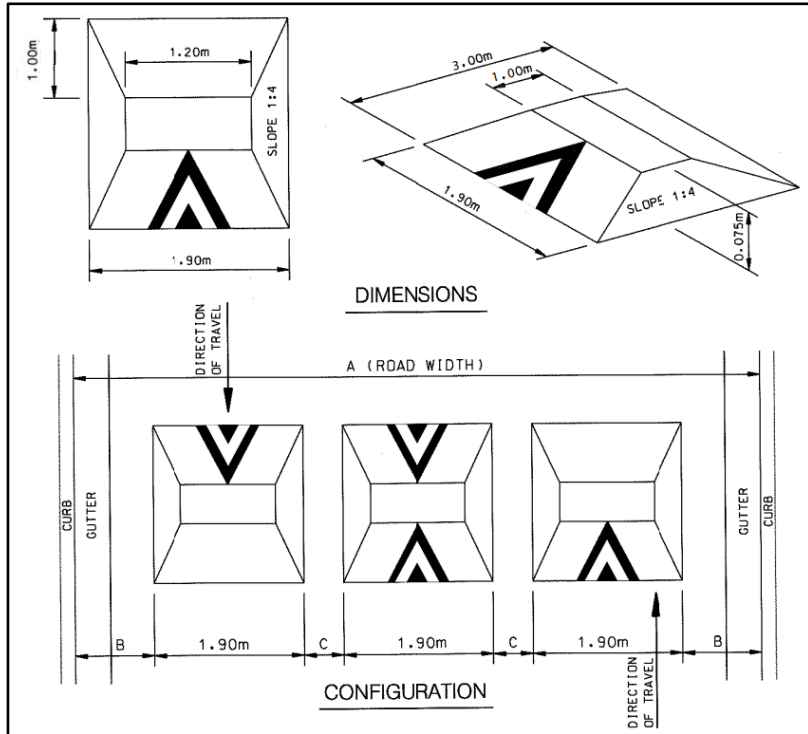


TRAFFIC CALMING DEVICES



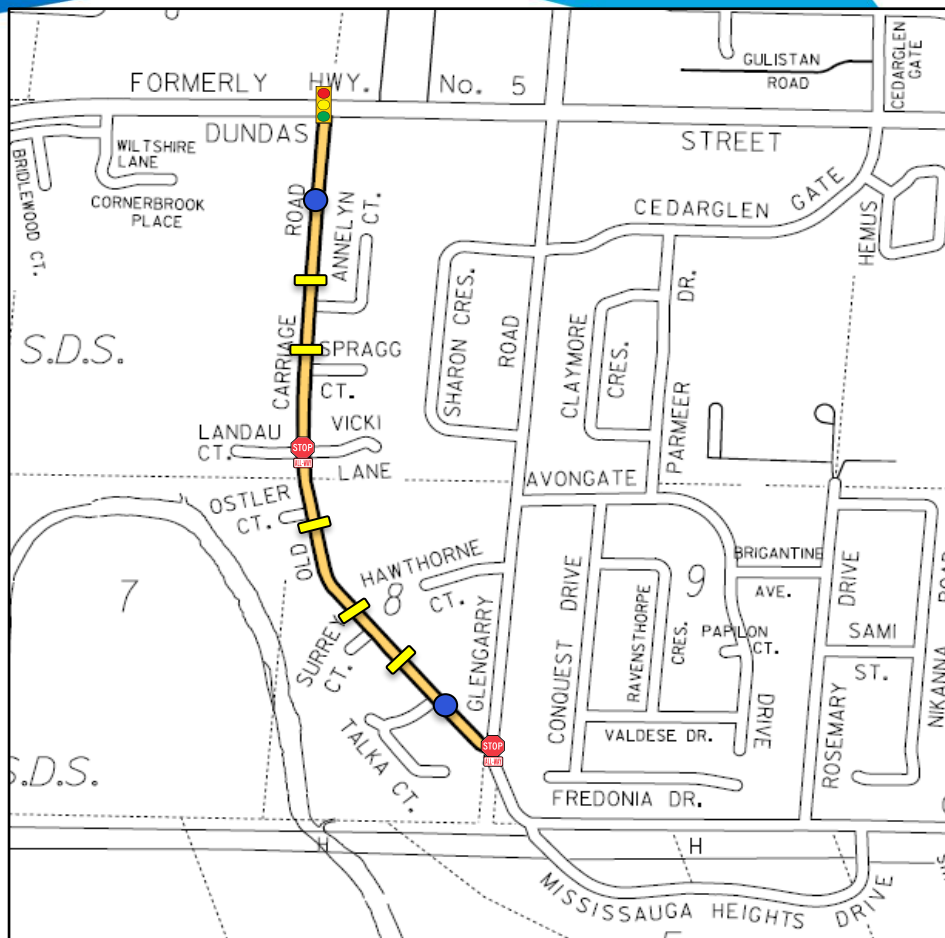
SPEED CUSHION DESIGN



- Raised area on a roadway that does not cover the entire width of the road
- Designed to accommodate wide wheel base of emergency vehicles (easy passage)
- Designed to discourage drivers from travelling at excessive speeds
- A series of speed cushions is more effective than a single installation
- Use on neighbourhood roads

Old Carriage Road

-  Existing Traffic Signal Location
-  Existing All-Way Stop Locations
-  Proposed Speed Cushion Locations
-  Proposed Flexible Bollard Locations



Old Carriage Road

Between Dundas Street West
and Landau Court/Vicki Lane



Existing Traffic
Signal Location



Existing All-Way
Stop Location



Proposed Speed
Cushion Locations



Proposed Flexible
Bollard Location



Old Carriage Road

Between Landau Court/Vicki Lane and Queensway West



Existing All-Way
Stop Locations



Proposed Speed
Cushion Locations



Proposed Flexible
Bollard Location

