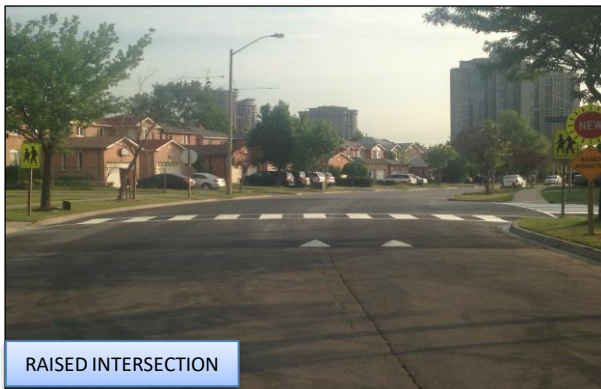
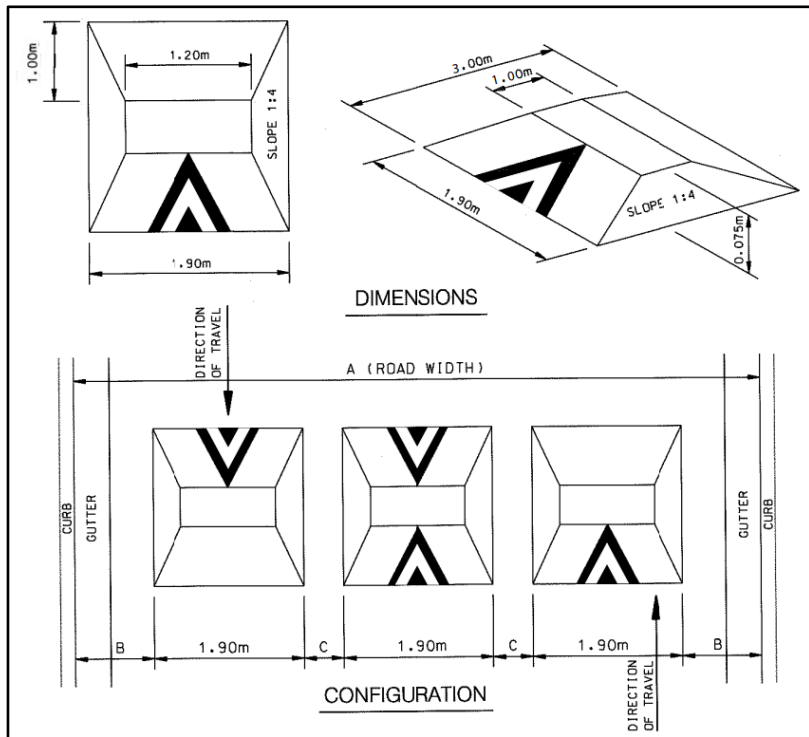


# TRAFFIC CALMING DEVICES



# SPEED CUSHION DESIGN



- Raised area on a roadway that does not cover the entire width of the road
- Designed to accommodate wide wheel base of emergency vehicles (easy passage)
- Designed to discourage drivers from travelling at excessive speeds
- A series of speed cushions is more effective than a single installation
- Use on neighbourhood roads

# Queensway West

Between Mavis Road and Old Carriage Road



Existing Traffic Signal  
Location



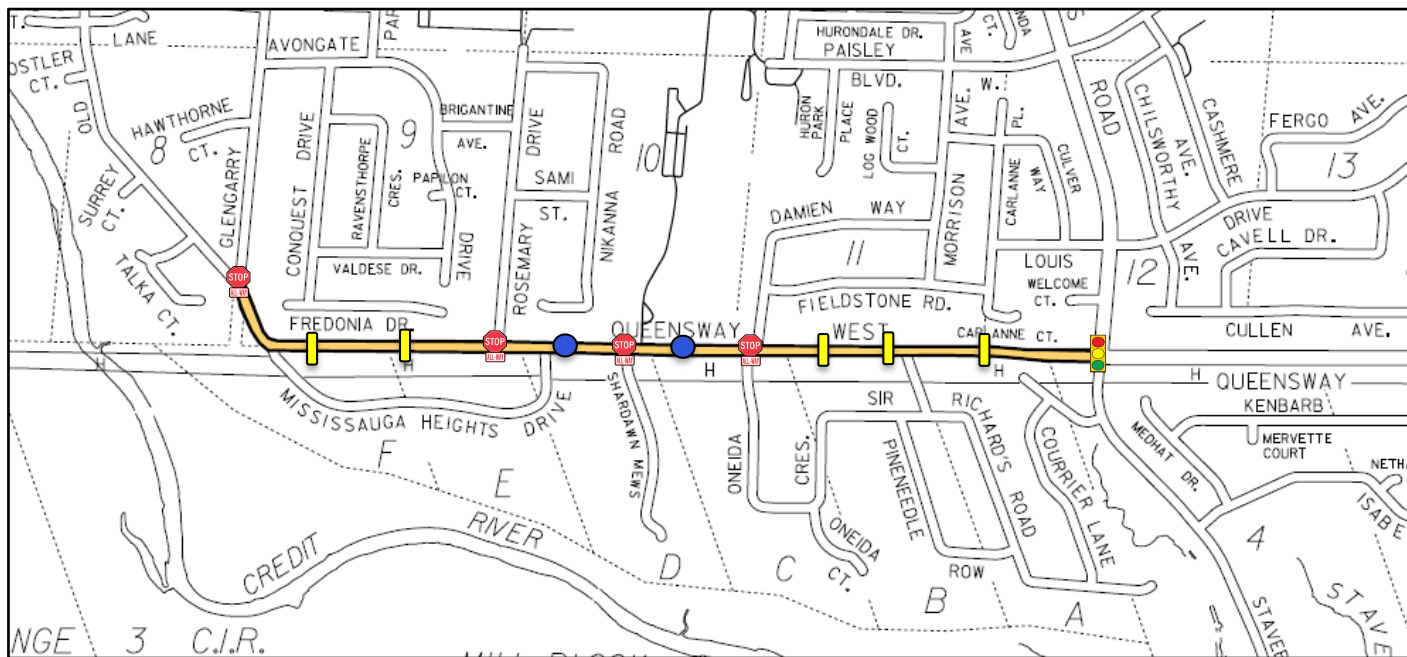
Existing All-Way  
Stop Locations



Proposed Speed  
Cushion Locations



Proposed Flexible  
Bollard Locations





## Queensway West

Between Mavis Road  
and Shardawn Mews



Existing Traffic Signal  
Location



Existing All-Way  
Stop Locations

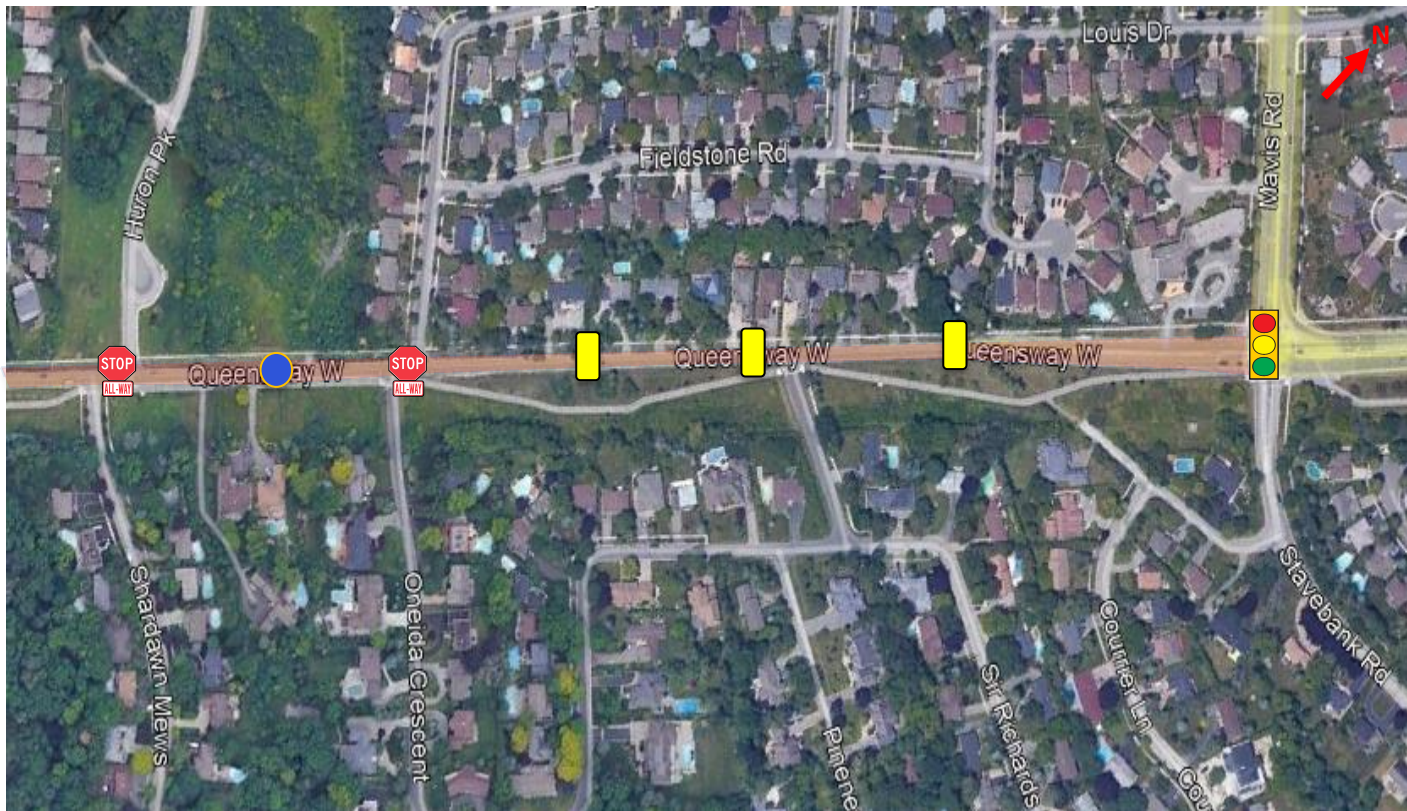


Proposed Speed  
Cushion Locations



Proposed Flexible  
Bollard Location

- ❖ Enhancement will be made to the existing all way stops to accommodate crosswalk markings





# Queensway West

Between Shardawn Mews  
and Old Carriage Road



Existing All-Way  
Stop Locations



Proposed Flexible  
Bollard Location



Proposed Speed  
Cushion Locations

- ❖ Enhancement will be made to the existing all way stops to accommodate crosswalk markings

