

**STRYBOS BARRON KING**  
LANDSCAPE ARCHITECTURE

PARTNERS  
ASSOCIATES

BRYN BARRON, OALA, CSLA, ISA  
AUSTAIR JOHNSTON, LOHTA, ISA, ASCA  
SALVATORE VIOLA, OALA, CSLA  
MATTHEW REGIMBAL, LOHTA, ISA  
LORIE ANN BLACK, OALA, CSLA

## **ARBORIST REPORT**

### **PROPOSED MIXED-USE HIGH-RISE DEVELOPMENT 2555 ERIN CENTRE BOULEVARD, MISSISSAUGA**

**PREPARED FOR:  
STARMONT ESTATES 2555 ERIN CENTRE INC.  
C/O TRINITY POINT DEVELOPMENTS  
1681 LANGSTAGG ROAD  
VAUGHAN, ONTARIO  
L4K 5T3**

**PREPARED BY:  
STRYBOS BARRON KING LTD.  
5770 HURONTARIO STREET  
SUITE 320  
MISSISSAUGA, ONTARIO  
L5R 3G5**

**ISA CERTIFIED ARBORIST  
MATTHEW GEHRES ON-1114A  
OUR PROJECT NO:  
24-6000**

**November 18, 2024**

**Revised December 17, 2024**

**STRYBOS BARRON KING LTD.**

5770 HURONTARIO STREET, SUITE 320, MISSISSAUGA, ONTARIO L5R 3G5 T: 416.695.4949 F: 905.712.3101 WWW.STRYBOS.COM

## **TABLE OF CONTENTS**

<b>Introduction</b>	<b>1</b>
<b>Site Context</b>	<b>1</b>
<b>Plans Utilized</b>	<b>1</b>
<b>Tree Inventory</b>	<b>1</b>
<b>Tree inventory List</b>	<b>2</b>
<b>Observations</b>	<b>3</b>
<b>Tree Preservation</b>	<b>3</b>
<b>Table 1- <i>Tree Protection Zones</i></b>	<b>4</b>
<b>Private Tree Bylaw</b>	<b>4</b>
<b>Table 2 <i>Tree Categories</i></b>	<b>4</b>
<b>Summary of Removals</b>	<b>4</b>
<b>Table 3 <i>Tree Removals Subject to Private Tree Bylaw</i></b>	<b>5</b>
<b>Tree Removals &amp; Preservation</b>	<b>7</b>
<b>Tree Compensation Requirements</b>	<b>7</b>
<b>Conclusion</b>	<b>8</b>
<b>Appendix A – Contextual Tree Inventory &amp; Preservation Plan</b>	<b>9</b>
<b>Appendix B – Site Photographs</b>	<b>10</b>
<b>Appendix C – Tree Protection Hoarding Detail</b>	<b>12</b>

**Enclosed: Full Size Tree Inventory & Preservation Plan**

**ARBORIST REPORT**  
**Proposed Mixed-use High-Rise Development**  
**2555 Erin Centre Blvd., Mississauga**

**Introduction**

Strybos Barron King Ltd. was retained by Starmont Estates Inc., c/o Trinity Point Developments, to prepare an Arborist Report for the subject property in accordance with City of Mississauga, Private Tree Bylaw requirements.

**Site Context**

The subject site is located at 2555 Erin Centre Boulevard, on the northeast corner of Erin Centre Blvd., and Erin Mills Parkway. Currently the property contains a retail plaza with associated parking lot. The site abuts Erin Mills Pkwy. to the west, Erin Centre Blvd. to the south and City owned woodland park to the north and east. The proposal for this property will see the construction of a new, mixed-use, high-rise development with underground parking facilities.

**Plans Utilized**

A topographic survey prepared by RP-E Surveying Ltd., along with a Site Plan provided by Arcadis and Grading and Servicing Plans provided by SCS Consulting Group Ltd. were used to locate any existing trees and provide recommendations based on the proposed construction constraints.

**Tree Inventory** (refer to tables below)

Trees were tagged and identified both within and immediately adjacent to the subject property. The dripline associated with the woodlands to the north and east of the site was reviewed and staked by SCS Consulting Group Ltd. and SBK with City approval on September 26, 2024. The trees within the woodlot that compose that dripline were also tagged and inventoried. The trees are described in terms of species and diameter at breast height (DBH – measured at 1.4m from grade). They have been assessed in terms of their general health from poor to good; **GOOD** – trees in good overall health and condition with desirable structure, **FAIR** – trees in moderate health and condition with less desirable structure, and **POOR** – trees displaying prominent health issues such as decay and disease and/or poor form and structure. (Refer to *V100 – Tree Inventory and Preservation Plan* for locations of and information pertaining to specific trees)

Tree Inventory Table Descriptions (See *Existing Tree Inventory* on Page 2)

Key#	This number refers to inventory number assigned to the tree on the plan.	
Species	The common names are provided for each tree.	
Caliper	This refers to diameter (in centimetres) at breast height and is measured at 1.4m above the ground for each tree.	
Crown	Canopy Width	An estimation of the average diameter of the tree canopy, in metres.
Health	The general assessed health of the tree.	
Structure	This is an assessment of the trees overall form.	
Comments	A general description of each tree's condition and/or pertinent characteristics is provided.	
Direction	This indicates either preservation or removal of the tree (as noted on the plan)	
Min. TPZ	Recommended Tree Preservation Zone (in metres).	

**ARBORIST REPORT**  
**Proposed Mixed-use High-Rise Development**  
**2555 Erin Centre Blvd., Mississauga**

**EXISTING TREE INVENTORY**

KEY	SPECIES	DBH (cm)	CROWN (m)	HEALTH G/F/P	STRUCTURE	COMMENTS	PRESERVATION DIRECTION	TREE CATEGORY	MIN. TPZ	KEY
1	Norway Maple	20.0	5.0	Poor	Narrow form	Significant crown dieback throughout	Remove	Municipal	1.8	1
2	Norway Maple	18.0	5.0	Poor	Narrow form	Significant crown dieback throughout	Remove	Municipal	1.8	2
3	Norway Maple	19.0	4.0	Poor	Narrow form	Declining	Remove	Municipal	1.8	3
4	Norway Maple	20.0	4.0	Poor	Narrow form	Declining	Remove	Municipal	1.8	4
5	Norway Maple	19.0	4.0	Poor	Narrow form	Declining	Remove	Municipal	1.8	5
6	Norway Maple	19.0	4.0	Dead			Remove	Municipal	1.8	6
301	Colorado Blue Spruce	22.0	4.0	Fair	Irregular form	Crowded by adjacent tree	Remove	Private	1.8	301
302	Colorado Blue Spruce	20.0	4.0	Fair	Narrow form	Crowded by adjacent tree, dieback throughout	Remove	Private	1.8	302
303	Hawthorn	20-22	7.0	Poor	Double stem	One sided form, crowded by adjacent tree, significant decay and dieback throughout	Remove	Private	1.8	303
304	Ironwood	11.0	5.0	Good	One sided form	Crowded by adjacent tree	Preserve	Boundary	1.8	304
305	Hawthorn	18.0	5.0	Poor	One sided form	Cavities in stem, deadwood in crown	Remove	Private	1.8	305
306	Sugar Maple	28.0	12.0	Good	One sided form	Crowded by adjacent tree	Preserve	Boundary	1.8	306
307	Sugar Maple	31.0	11.0	Good	One sided form	Crowded by adjacent tree	Preserve	Boundary	2.4	307
308	Sugar Maple	33.0	12.0	Good	One sided form	Crowded by adjacent tree	Preserve	Boundary	2.4	308
309	Austrian Pine	32.0	7.0	Good	Asymmetrical form	Elevated crown	Remove	Private	2.4	309
310	Manitoba Maple	13-18	7.0	Fair	Multi-stemmed	Asymmetrical form, leaning into subject site	Preserve	Parkland	1.8	310
311	Shagbark Hickory	40.0	20.0	Good	Good form	High crown	Preserve	Parkland	2.4	311
312	Red Oak	26-30	15.0	Good	Double stem	One stem with decay, asymmetrical form	Preserve	Parkland	2.4	312
313	Sugar Maple	20.0	5.0	Good	Asymmetrical form	Crowded by adjacent tree	Preserve	Parkland	1.8	313
314	Apple	14.0	7.0	Fair	One sided form	Subordinated crown	Preserve	Parkland	1.8	314
315	White Ash	6.0	3.0	Good	One sided form	Crowded by adjacent tree	Preserve	Parkland	1.8	315
316	Red Oak	59.0	18.0	Good	Good form	High crown, leaning south	Preserve	Parkland	3.6	316
317	Shagbark Hickory	22.0	10.0	Good	One sided form	Crown subordinated by adjacent tree	Preserve	Parkland	1.8	317
318	Ironwood	25.0	9.0	Good	One sided form	Crown subordinated by adjacent tree, most of crown overhangs subject site	Preserve	Parkland	1.8	318
319	White Oak	84.0	20.0	Good	High crown	Mature, some dieback in upper crown	Preserve	Parkland	5.4	319
320	Black Cherry	13.5	6.0	Fair	One sided form	Subordinated crown	Preserve	Parkland	1.8	320
321	Sugar Maple	30.5	10.0	Good	Good form	Crowded by adjacent tree	Preserve	Parkland	2.4	321
322	Sugar Maple	36.0	10.0	Good	One sided form	Crowded by adjacent tree	Preserve	Parkland	2.4	322
323	Hawthorn	18.0	7.0	Good	Multi-stemmed	Leaning south, one sided form	Preserve	Parkland	1.8	323
324	Sugar Maple	68.0	15.0	Good	One sided form	High crown	Preserve	Parkland	4.2	324
325	Sugar Maple	50.0	12.0	Good	One sided form	High crown	Preserve	Parkland	3.0	325
326	Sugar Maple	11.0	8.0	Good	One sided form	Crowded by adjacent tree	Preserve	Parkland	1.8	326
327	Sugar Maple	11.0	6.0	Good	One sided form	Crowded by adjacent tree	Preserve	Parkland	1.8	327
328	Sugar Maple	17.0	7.0	Good	One sided form	Crowded by adjacent tree	Preserve	Parkland	1.8	328
329	Red Oak	48.0	20.0	Good	High crown	Slightly asymmetrical crown	Preserve	Parkland	3.0	329
330	Sugar Maple	11.0	6.0	Good	Narrow form	Crowded by adjacent tree	Preserve	Parkland	1.8	330
331	Basswood	20.0	10.0	Good	Leaning	One sided form, crowded by adjacent tree	Preserve	Parkland	1.8	331
332	Shagbark Hickory	47.0	16.0	Good	High crown	Broad, asymmetrical canopy	Preserve	Parkland	3.0	332
333	Sugar Maple	25.0	15.0	Good	High crown	Good form	Preserve	Parkland	1.8	333
334	Basswood	25.0	8.0	Fair	One sided form	Leaning south	Preserve	Parkland	1.8	334
335	Ironwood	20.0	9.0	Good	Narrow form	Crowded by adjacent tree	Preserve	Parkland	1.8	335
336	Sugar Maple	30.5	8.0	Good	Narrow form	Asymmetrical form, crowded by adjacent tree	Preserve	Parkland	2.4	336
337	Shagbark Hickory	31.5	8.0	Good	One sided form	Crowded by adjacent tree	Preserve	Parkland	2.4	337
338	Red Oak	42.0	12.0	Good	One sided form	Subordinated crown, some dieback on lower branches	Preserve	Parkland	3.0	338
339	Austrian Pine	22.0	6.0	Good	Irregular form	Elevated crown	Remove	Private	1.8	339
340	Austrian Pine	25.0	4.0	Good	Narrow form	Elevated crown	Remove	Private	1.2	340
341	Austrian Pine	30.0	5.0	Good	One sided form	Multiple leaders, leaning	Remove	Private	2.4	341
342	Russian Olive	22.0	8.0	Fair	Multi-stemmed	Irregular form, leaning, internal dieback throughout	Remove	Private	1.8	342
343	Colorado Blue Spruce	40.0	6.0	Good	Curved stem	Elevated crown, crowded by adjacent tree	Remove	Private	2.4	343
344	Colorado Blue Spruce	21.0	4.0	Fair	One sided form	Crowded by adjacent tree	Remove	Private	1.8	344
345	Colorado Blue Spruce	30.0	5.0	Good	One sided form	Crowded by adjacent tree	Remove	Private	2.4	345
346	Pyramidal English Oak	25.0	5.0	Good	Good form	Minor dieback on lower branches	Remove	Private	1.8	346
347	Pyramidal English Oak	18.0	4.5	Fair	Good form	Dieback on lower branches	Remove	Private	1.8	347
348	Austrian Pine	45.0	8.0	Good	Good form	Multiple leaders	Remove	Private	3.0	348
349	Austrian Pine	30.0	6.0	Good	Good form	Dieback on lower branches	Remove	Private	1.8	349
350	Pyramidal English Oak	30.0	5.0	Good	Good form	Minor upper crown dieback	Remove	Private	2.4	350
351	Pyramidal English Oak	22.0	5.0	Good	Good form		Remove	Private	1.8	351
352	Norway Maple	23.0	6.0	Poor	Good form	Girdles roots, significant internal crown dieback	Remove	Private	1.8	352
353	Norway Maple	24.5	6.0	Poor	Good form	Half dead	Remove	Private	1.8	353
354	Norway Maple	24.0	7.0	Fair	Good form	Dead leader, internal crown dieback	Remove	Private	1.8	354
355	Norway Maple	28.0	6.0	Fair	Good form	Internal crown dieback	Remove	Private	1.8	355
356	Norway Maple	28.5	6.0	Poor	Good form	Significant dieback in crown	Remove	Private	1.8	356
357	English Oak	28.0	7.0	Poor	Good form	Significant upper crown dieback	Remove	Private	1.8	357
358	English Oak	22.5	6.0	Poor	Good form	Declining	Remove	Private	1.8	358
359	English Oak	27.0	7.0	Fair	Good form	Dead leader, internal crown dieback	Remove	Private	1.8	359
360	English Oak	27.0	7.0	Poor	Good form	Half dead, declining	Remove	Private	1.8	360
361	English Oak	24.0	7.0	Poor	Good form	Significant crown dieback throughout	Remove	Private	1.8	361
362	English Oak	23.5	6.0	Good	Good form	Minor twig tip dieback in crown	Remove	Private	1.8	362
363	English Oak	23.0	6.0	Fair	Good form	Dieback on east side of crown	Remove	Private	1.8	363

**ARBORIST REPORT**  
**Proposed Mixed-use High-Rise Development**  
**2555 Erin Centre Blvd., Mississauga**

EXISTING TREE INVENTORY										
KEY	SPECIES	DBH (cm)	CROWN (m)	HEALTH G/F/P	STRUCTURE	COMMENTS	PRESERVATION DIRECTION	TREE CATEGORY	MIN. TPZ	KEY
364	English Oak	33.5	7.0	Fair	Good form	Twig tip dieback throughout	Remove	Private	2.4	364
365	Norway Maple	28.0	8.0	Good	Good form	Slightly crowded by adjacent tree	Remove	Private	1.8	365
366	Norway Maple	31.0	8.0	Good	Double leader	Narrow form, crowded by adjacent tree	Remove	Private	2.4	366
367	Colorado Blue Spruce	31.0	4.0	Good	Narrow form	Elevated crown, dieback on lower branches	Remove	Private	2.4	367
368	Colorado Blue Spruce	28.0	4.0	Good	One sided form	Crowded by adjacent tree	Remove	Private	1.8	368
369	Norway Maple	26.5	7.0	Poor	High crown	Girdled roots, some dieback in crown	Remove	Private	1.8	369
370	Norway Maple	19.0	6.0	Fair	Irregular form	Pollarded crown, double leader	Remove	Private	1.8	370
371	Honey Locust	30.0	8.0	Good	Good form	Double leaders, minor twig tip dieback in upper crown	Remove	Private	2.4	371

### **Observations**

The subject site is currently a commercial plaza with a parking lot. A number of existing landscape accent trees flanks the east property limit as well as the south boulevard frontage flanking Erin Centre Boulevard. Several street trees occur within the Erin Centre municipal right of way. An existing woodlot occurs immediately north and east of the subject property. This woodlot is park to the City of Mississauga Erin Woods parkland.

The adjacent woodlot edge is composed mainly of semi-mature to mature native hardwood species including Red Oak, Sugar Maple, Ironwood, White Oak, Black Cherry, Basswood and Shagbark Hickory. A small number of Manitoba Maple trees and Hawthorn occur along the existing fence line associated with the north limit of the subject site. An understory of the above noted species occurs throughout. The parkland immediately to the east of the site limit is composed of dense Buckthorn Shrub clusters. This is an invasive, exotic pioneer species which has colonized the area east of the subject site. Overall, the trees that make up the woodlot edge are in fair to good overall health and condition. The dripline associated with this woodlot has been staked and included on the Tree Inventory & Preservation Plans. The dripline encroaches into the subject site along the north limit; however, does not adjacent to the east site limit.

The east site limit is composed of a planted row of semi-mature Austrian Pine, Colorado Blue Spruce and Pyramidal English Oak trees. These trees were likely planted as per the original site planning for the plaza. These trees are in generally fair to good health and condition.

The site frontage flanking Erin Centre Drive is composed of buffer planting beds which include several Norway Maple and Pyramidal English Oak trees. The daylight triangle at the southwest corner of the site is composed of Colorado Blue Spruce and Norway Maple trees. Further, one Norway Maple and one Honeylocust flanks the west boulevard adjacent to Erin Mills Parkway. With the exception of a few, these semi-mature trees are in various levels of decline, and many are in generally poor condition.

### **Tree Preservation**

In determining the tree preservation recommendations for the site, the criteria noted below were considered:

- Overall tree health, form, size, species and predicated longevity.
- Anticipated impact from construction of buildings and proposed landscape features, road works, site servicing and grading.

Each tree was assigned a minimum Tree Preservation Zone (TPZ) as per standard requirements used by municipal by-laws (*Refer to Table 1-Tree Protection Zones*).

**ARBORIST REPORT**  
**Proposed Mixed-use High-Rise Development**  
**2555 Erin Centre Blvd., Mississauga**

**Table 1 - Tree Protection Zones**

<b>Trunk Diameter (DBH)</b>	<b>Minimum Protection Zone</b>
<10 cm	1.2m
10-29 cm	1.8 m
30-40 cm	2.4 m
41-50 cm	3.0 m
51-60 cm	3.6 m
61-70 cm	4.2 m
71-80 cm	4.8 m
81-90 cm	5.4 m
91-100 cm	6.0 m
< 100 cm	6cm per 1cm DBH

Trees are recommended for preservation or removal based on proximity of the TPZ to the limit of construction, in conjunction with the overall tree health, size and anticipated ability to withstand root or crown impacts.

**Private Tree By-Law****Table 2 – Tree Categories**

<b>CITY OF MISSISSAUGA TREE CATEGORIES</b>	
1	Trees with diameters of 15cm or more, situated on private property, on the subject site.
2	Trees with diameters of 15cm or more, situated on private property, within 6m of the subject site.
3	Trees of all diameters situated within the City road allowance adjacent to the subject site.
4 ( <i>exempt</i> )	Trees that are less than 15cm diameter and located on private property.

The City of Mississauga Private Tree Bylaw protects trees found on private property that are greater than 15cm DBH (Diameter at Breast Height) as well as trees of all diameters situated within the City road allowance.

The By-law states that:

- No Person shall Injure or Destroy a Tree with a Diameter of 15 centimeters or greater located on private property without a valid permit.
- No Person shall interfere with Hoarding that is erected in accordance with this By-law.
- No Person shall injure or destroy a Replacement Tree without a valid Permit.
- Permission is required for Ash or dead tree removals, but no permit fee is required.

**Summary of Removals**

The following is a summary of proposed tree removals for this site that will require a Permit for removal in accordance with City of Mississauga Private Tree Bylaw.

**ARBORIST REPORT**  
**Proposed Mixed-use High-Rise Development**  
**2555 Erin Centre Blvd., Mississauga**

**Table 3 – Tree Removals subject to Private Tree Bylaw (Refer to The Tree Inventory List for specific details)**

KEY	SPECIES	CALIPER (cm)	HEALTH G/F/P	REASON	STATUS	OWNERSHIP	COMPENSATION
1	Norway Maple	20.0	Poor	Poor Condition/ Blvd. Upgrades	Remove	Municipal	1
2	Norway Maple	18.0	Poor	Poor Condition/ Blvd. Upgrades	Remove	Municipal	1
3	Norway Maple	19.0	Poor	Poor Condition/ Blvd. Upgrades	Remove	Municipal	1
4	Norway Maple	20.0	Poor	Poor Condition/ Blvd. Upgrades	Remove	Municipal	1
5	Norway Maple	19.0	Poor	Poor Condition/ Blvd. Upgrades	Remove	Municipal	1
6	Norway Maple	19.0	Dead	Poor Condition/ Blvd. Upgrades	Remove	Municipal	1
301	Colorado Blue Spruce	22.0	Fair	Construction, Grading & Servicing	Remove	Private	1
302	Colorado Blue Spruce	20.0	Fair	Construction, Grading & Servicing	Remove	Private	1
303	Hawthorn	20-22	Poor	Construction, Grading & Servicing	Remove	Private	1
305	Hawthorn	18.0	Poor	Construction, Grading & Servicing	Remove	Private	1
309	Austrian Pine	32.0	Good	Construction, Grading & Servicing	Remove	Private	2
339	Austrian Pine	22.0	Good	Construction, Grading & Servicing	Remove	Private	1
340	Austrian Pine	25.0	Good	Construction, Grading & Servicing	Remove	Private	2
341	Austrian Pine	30.0	Good	Construction, Grading & Servicing	Remove	Private	2
342	Russian Olive	22.0	Fair	Construction, Grading & Servicing	Remove	Private	1
343	Colorado Blue S	40.0	Good	Construction, Grading & Servicing	Remove	Private	3
344	Colorado Blue Spruce	21.0	Fair	Construction, Grading & Servicing	Remove	Private	1
345	Colorado Blue Spruce	30.0	Good	Construction, Grading & Servicing	Remove	Private	2
346	Pyramidal English Oak	25.0	Good	Construction, Grading & Servicing	Remove	Private	2
347	Pyramidal English Oak	18.0	Fair	Construction, Grading & Servicing	Remove	Private	1

**ARBORIST REPORT**  
**Proposed Mixed-use High-Rise Development**  
**2555 Erin Centre Blvd., Mississauga**

KEY	SPECIES	CALIPER (cm)	HEALTH G/F/P	REASON	STATUS	OWNERSHIP	COMPENSATION
348	Austrian Pine	45.0	Good	Construction, Grading & Servicing	Remove	Private	3
349	Austrian Pine	30.0	Good	Construction, Grading & Servicing	Remove	Private	2
350	Pyramidal English Oak	30.0	Good	Construction, Grading & Servicing	Remove	Private	2
351	Pyramidal English Oak	22.0	Good	Construction, Grading & Servicing	Remove	Private	1
352	Norway Maple	23.0	Poor	Construction, Grading & Servicing	Remove	Private	2
353	Norway Maple	24.5	Poor	Construction, Grading & Servicing	Remove	Private	2
354	Norway Maple	24.0	Fair	Construction, Grading & Servicing	Remove	Private	2
355	Norway Maple	28.0	Fair	Construction, Grading & Servicing	Remove	Private	2
356	Norway Maple	28.5	Poor	Construction, Grading & Servicing	Remove	Private	2
357	English Oak	28.0	Poor	Construction, Grading & Servicing	Remove	Private	2
358	English Oak	22.5	Poor	Construction, Grading & Servicing	Remove	Private	2
359	English Oak	27.0	Fair	Construction, Grading & Servicing	Remove	Private	2
360	English Oak	27.0	Poor	Construction, Grading & Servicing	Remove	Private	2
361	English Oak	24.0	Poor	Construction, Grading & Servicing	Remove	Private	2
362	English Oak	23.5	Good	Construction, Grading & Servicing	Remove	Private	2
363	English Oak	23.0	Fair	Construction, Grading & Servicing	Remove	Private	2



**ARBORIST REPORT**  
**Proposed Mixed-use High-Rise Development**  
**2555 Erin Centre Blvd., Mississauga**

KEY	SPECIES	CALIPER (cm)	HEALTH G/F/P	REASON	STATUS	OWNERSHIP	COMPENSATION
364	English Oak	33.5	Fair	Construction, Grading & Servicing	Remove	Private	2
365	Norway Maple	28.0	Good	Construction, Grading & Servicing	Remove	Private	2
366	Norway Maple	31.0	Good	Construction, Grading & Servicing	Remove	Private	2
367	Colorado Blue Spruce	31.0	Good	Construction, Grading & Servicing	Remove	Private	2
368	Colorado Blue Spruce	28.0	Good	Construction, Grading & Servicing	Remove	Private	2
369	Norway Maple	26.5	Poor	Construction, Grading & Servicing	Remove	Private	2
370	Norway Maple	19.0	Fair	Construction, Grading & Servicing	Remove	Private	1
371	Honey Locust	30.0	Good	Construction, Grading & Servicing	Remove	Private	2

***Total of 44 Trees to be Removed***

**Tree Removals & Preservation**

Based on the constraints of the proposed Site Plan, all trees within the subject site require removal. All of the municipal street trees along Erin Centre Blvd. are either dead or in decline and are to be removed as well. All trees associated with the adjacent woodlot parklands are to be preserved and protected.

City approved tree protection hoarding is to be installed at the minimum TPZ limits for all neighbouring woodland trees to be preserved as noted on the Tree Inventory & Preservation Plans.

**Tree Compensation Requirements**

The City of Mississauga requires replacement trees be provided for one or more trees 15cm or greater on your property. One replacement tree is required for every 15cm diameter being removed.

A Tree Replacement security deposit determined by the City is required to ensure that the replacement trees are planted on private property. If there is no sufficient space to accommodate the trees, you must pay to plant replacement trees on City property.

The City requests that replacement trees be at a minimum 1.8m tall if coniferous and 6cm in diameter if deciduous.

A total of **seventy-four (74)** compensation trees are required.

**ARBORIST REPORT**  
**Proposed Mixed-use High-Rise Development**  
**2555 Erin Centre Blvd., Mississauga**

The landscape planning for this site includes a robust edge management planting plan as well as extensive landscape planting throughout the subject site, including upgrades to the municipal boulevard along Erin Centre Drive. The total number of proposed new trees is to be accounted for as compensation will be determined during the detailed design phase of the SPA works.

**Conclusion**

Strybos Barron King Ltd. was retained by Starmont Estates Inc., c/o Trinity Point Developments to prepare an Arborist Report for the subject property in accordance with City of Mississauga Tree Bylaw requirements. The report summarizes the trees inventoried within and immediately adjacent to the property and provides recommendations for preservation in context with the proposed mixed-use high-rise development. The *V100 – Tree Inventory & Preservation Plan* should be used as a reference with this report for detailed information pertaining to existing trees.

The proposal for this property will see the construction of a new, mixed-use, high-rise development with underground parking facilities. Based on the required site plan, servicing, grading and construction works, forty-four (44) trees, subject to the Private Tree Bylaw require removal. This includes the existing boulevard trees along Erin Centre Drive which are all in poor condition. Based on the City's compensation requirements, a total of seventy-four (74) compensation trees are required. All trees associated with the adjacent woodlands will be preserved and protected throughout the development process. In addition, a robust edge management planting plan is proposed for the north limit which will enhance the woodlot edge and provide for compensation plantings.

Prepared By:

**STRYBOS BARRON KING LTD.**



**Matthew Gehres**

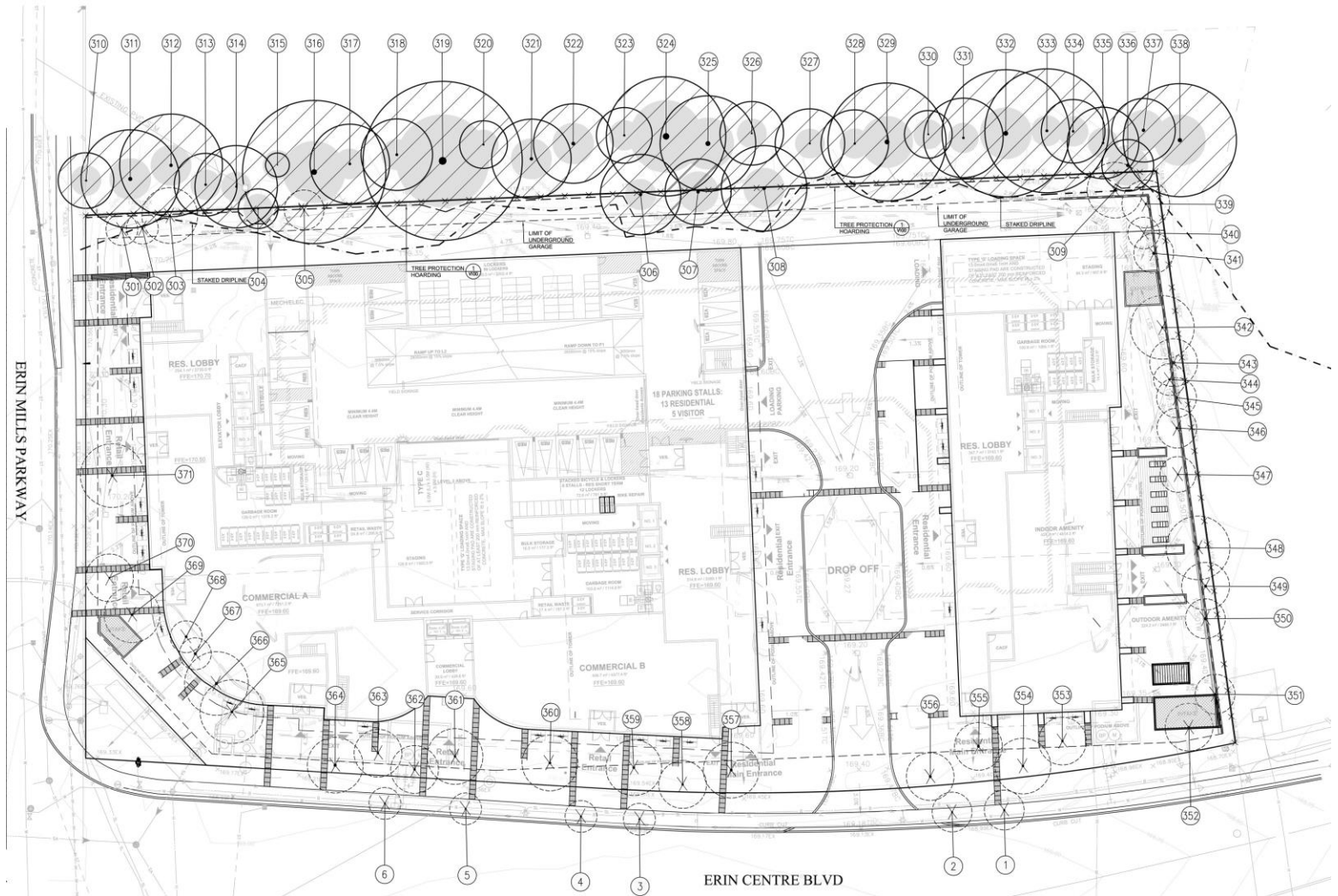
*I.S.A. Certified Arborist ON-1114A*

*Senior Landscape Technologist*

*Ext. 228*

**ARBORIST REPORT**  
**Proposed Mixed-use High-Rise Development**  
**2555 Erin Centre Blvd., Mississauga**

**APPENDIX A – CONTEXTUAL TREE INVENTORY & PRESERVATION PLAN (for context only)**





**ARBORIST REPORT**  
**Proposed Mixed-use High-Rise Development**  
**2555 Erin Centre Blvd., Mississauga**

**Appendix B – SITE PHOTOGRAPHS**



Northwest corner of site (view northwest)



North end of site (view northwest)



North end of site (view northeast)



Northeast corner of site (view northeast)



East side of site (view north)



Southeast corner of site (view east)



**ARBORIST REPORT**  
**Proposed Mixed-use High-Rise Development**  
**2555 Erin Centre Blvd., Mississauga**

**Appendix B – SITE PHOTOGRAPHS**



Southeast side of site (view north)



South side of site (view west)



Southwest corner of site (view southwest)



West side of site (view west)



Blvd. Trees along Erin Centre Dr.

**ARBORIST REPORT**  
**Proposed Mixed-use High-Rise Development**  
**2555 Erin Centre Blvd., Mississauga**

**Appendix C – TREE PROTECTION HOARDING DETAIL**

