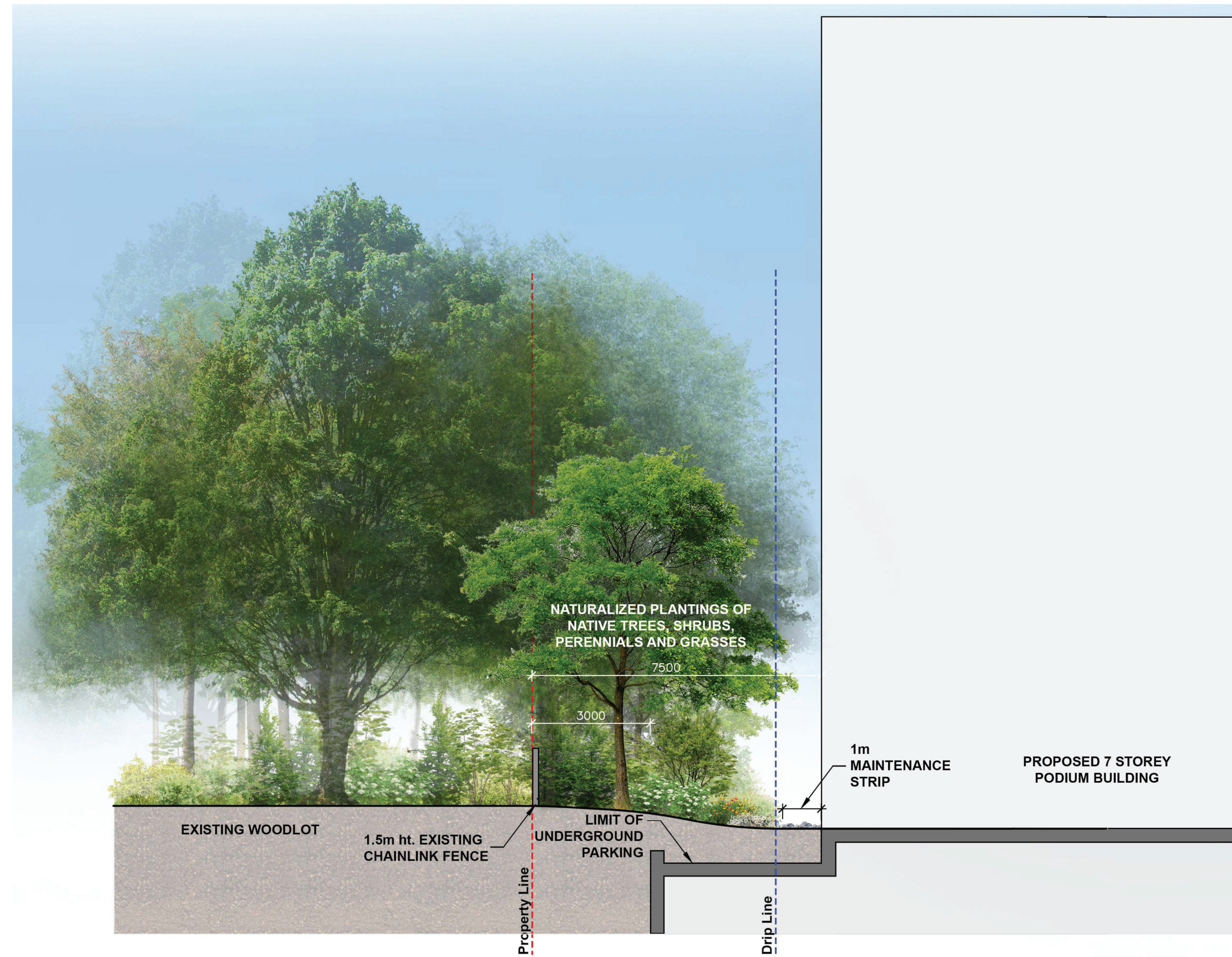


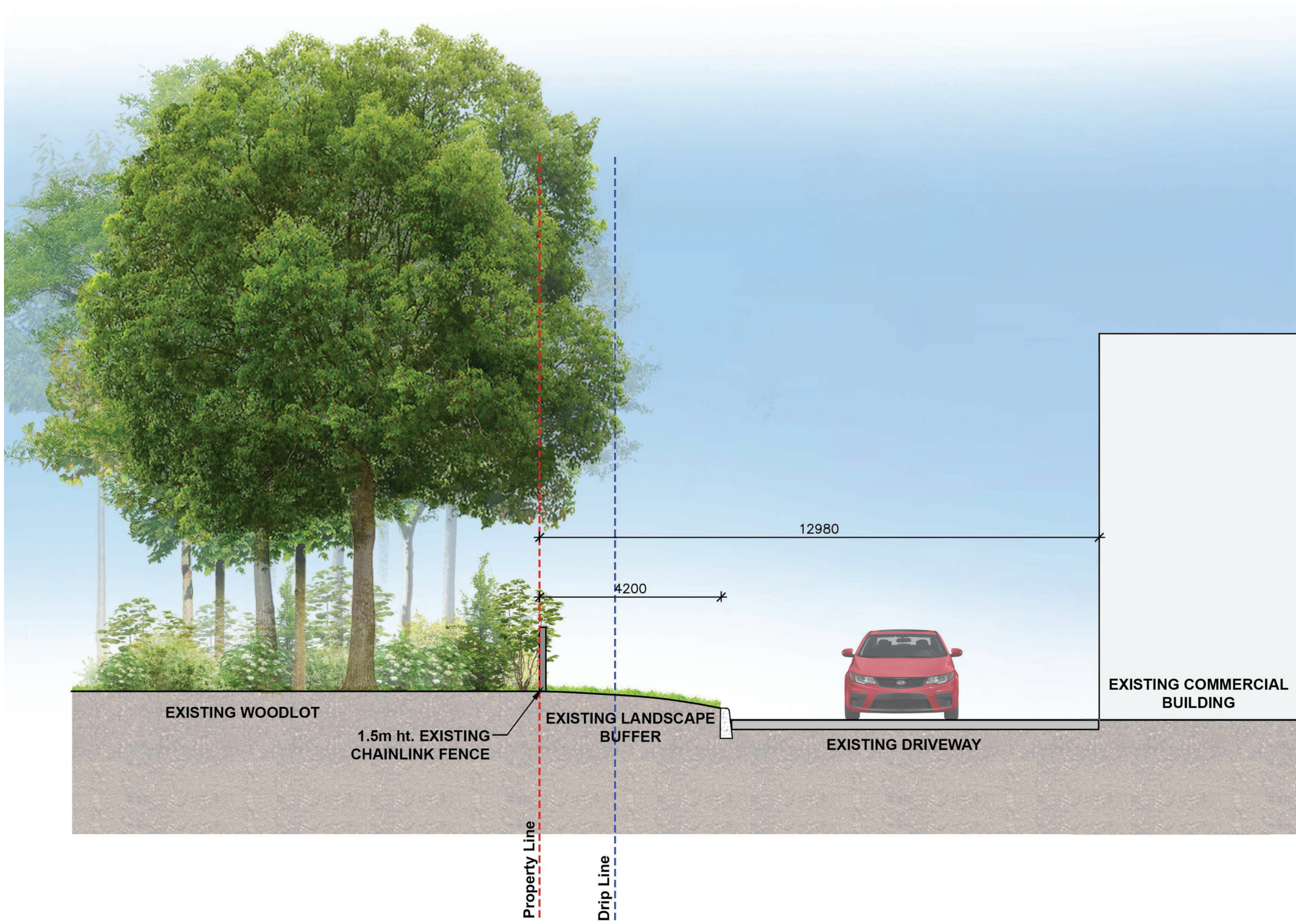
1
L101

EXISTING SECTION 1



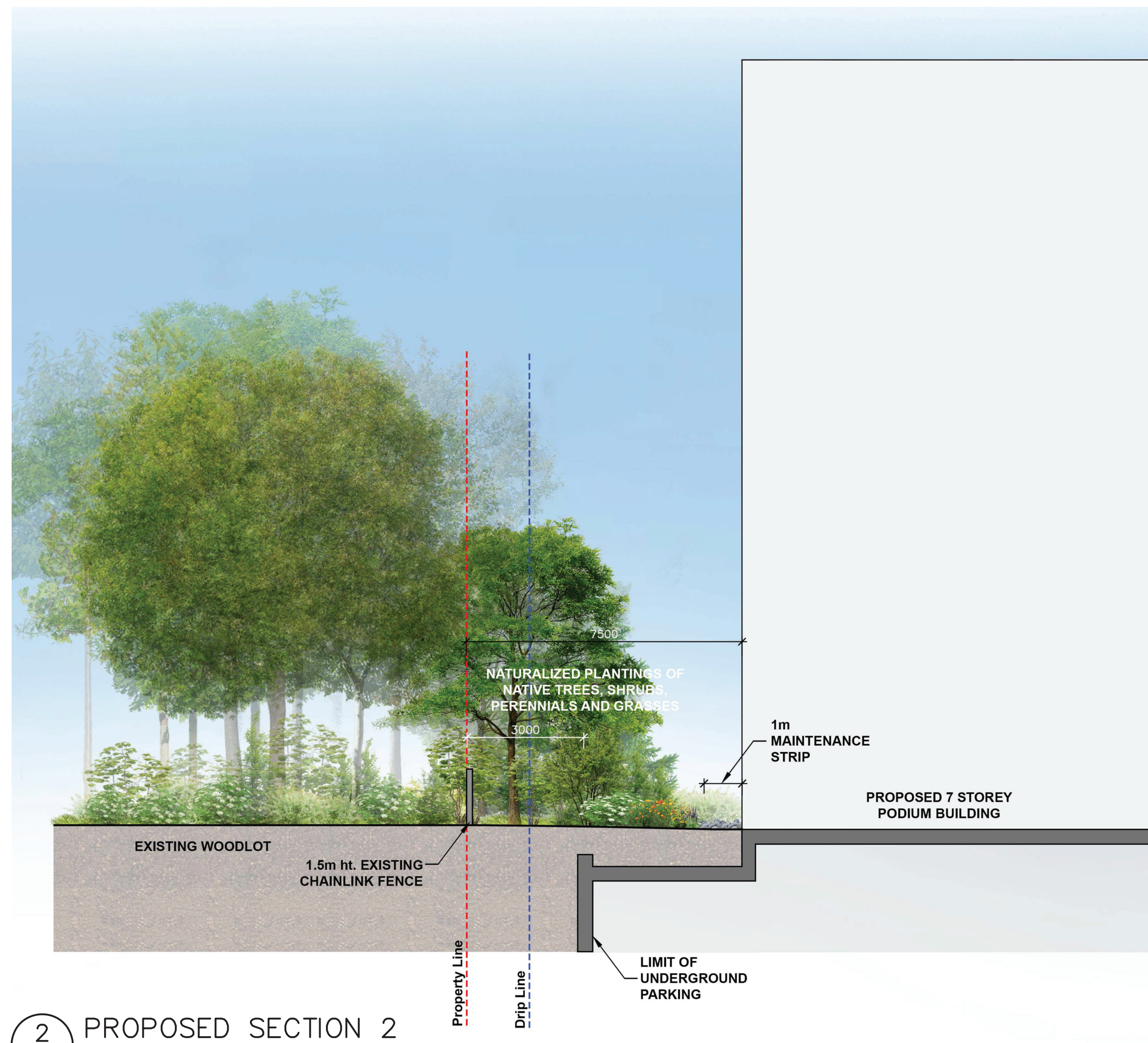
1
L101

PROPOSED SECTION 1



2
L101

EXISTING SECTION 2



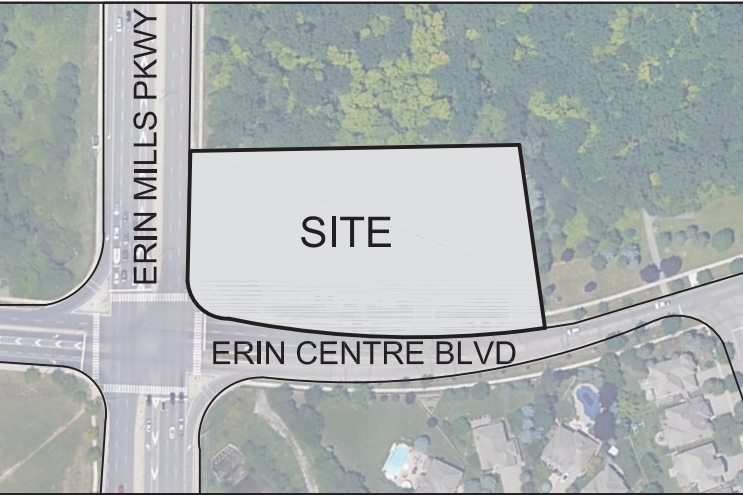
2
L101

PROPOSED SECTION 2

GENERAL NOTES

- VERIFY ALL DIMENSIONS.
- DO NOT SCALE DRAWINGS.
- REPORT ANY DISCREPANCIES, DISCOVERED ERRORS, OR OMISSIONS TO THE LANDSCAPE ARCHITECT BEFORE PROCEEDING.
- IT IS ADVISED THAT CONTRACTORS CONTACT THE LANDSCAPE ARCHITECT PRIOR TO CONSTRUCTION TO ENSURE THE USE OF THE LATEST REVISED DRAWINGS.
- DRAWINGS AND SPECIFICATIONS ARE THE PROPERTY OF THE LANDSCAPE ARCHITECT.

KEYMAP



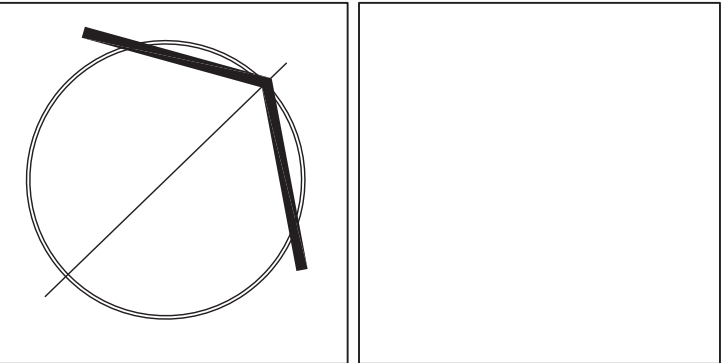
LEGEND

LIST OF DRAWINGS

L100	LANDSCAPE CONCEPT PLAN
L101	CONCEPTUAL EDGE MANAGEMENT CROSS-SECTIONS
L102	CONCEPTUAL EDGE MANAGEMENT CROSS-SECTIONS
L103	STREETSCAPE CROSS-SECTIONS(ERIN MILLS PKWY)
L104	STREETSCAPE CROSS-SECTIONS(ERIN CENTRE BLVD)
L105	LANDSCAPE PLAN-9th & 8th FLOOR ROOFTOP AMENITIES
V100	PRELIMINARY TREE INVENTORY & PRESERVATION PLAN

No.	DATE	REVISION	BY
4	2024-12-04	ISSUED FOR SUBMISSION	BB
3	2024-11-18	REVISED AS PER CLIENT COMMENTS	MG
2	2024-11-04	ISSUED FOR COORDINATION	MG
1	2024-08-09	ISSUED FOR COORDINATION	MG

It is the responsibility of the Contractor and/or Owner to ensure that the drawings with the latest revisions are used for construction.



PROJECT:
2555 ERIN CENTRE BLVD
MISSISSAUGA, ONTARIO

DRAWING TITLE:
CONCEPTUAL EDGE
MANAGEMENT CROSS-SECTIONS

SCALE:	AS SHOWN	PROJECT No.
DATE:	AUGUST 06, 2024	6000
DRAWN BY:	A.S.M.	DRAWING No.
CHECKED BY:	B.B.	L101