

- NOTES:**
- Hoarding details to be determined following initial site inspection.
 - Private tree hoarding to be approved by Development & Design.
 - City tree hoarding to be approved by Community Services Dept.
 - Hoarding must be supplied, installed and maintained by the applicant throughout all phases of construction.
 - Inspection must be conducted by the Development and Design Division prior to removing any/all private hoarding.
 - Do not allow water to collect and pond behind or within hoarding.
 - T-bar supports are acceptable alternative to 4x4 posts. U-shaped metal supports will not be accepted.
 - Plywood must be utilized for 'solid' hoarding. OSB/Chipboard will not be accepted for solid hoarding. Plywood sheets must be installed on 'construction' side of frame.
 - Applicant is responsible to ensure utility locates are completed within city boulevard prior to installing framed hoarding.

TREE PRESERVATION HOARDING



SCALE: 1/8" = 1'-0" DATE: June 2024

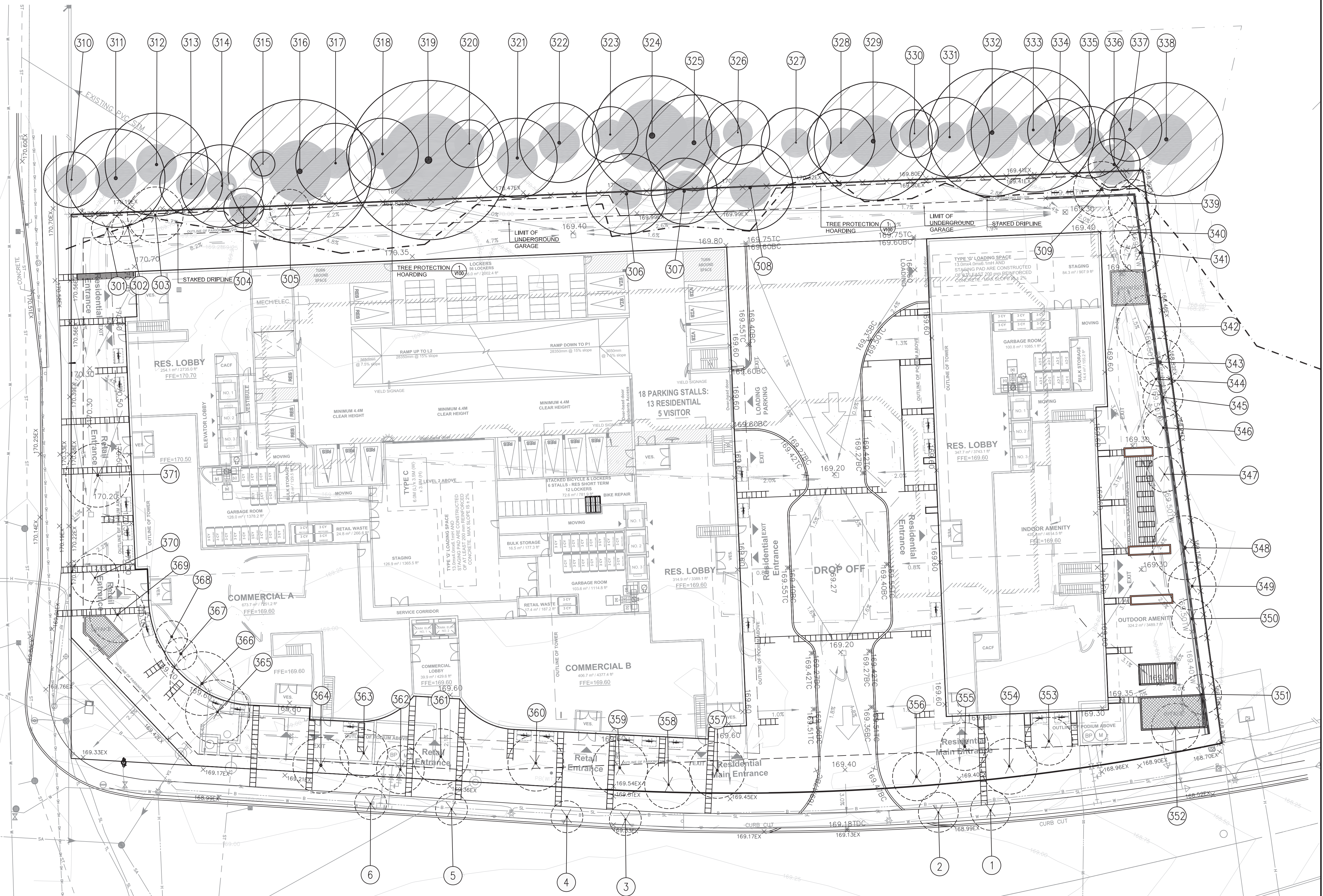
1 TREE PRESERVATION HOARDING DETAIL

V100

EXISTING TREE INVENTORY													
KEY	SPECIES	DBH	CROWN	HEALTH	STRUCTURE	COMMENTS	PRESERVATION	TREE		MIN. TPZ	KEY		
		(in)	(in)				DIRECTION	CATEGORY					
1	Noway Maple	20.0	5.0	Poor	Narrow form	Significant crown dieback throughout	Remove	Municipal	1.8	1			
2	Noway Maple	18.0	5.0	Poor	Narrow form	Significant crown dieback throughout	Remove	Municipal	1.8	2			
3	Noway Maple	18.0	4.0	Poor	Narrow form	Declining	Remove	Municipal	1.8	3			
4	Noway Maple	20.0	4.0	Poor	Narrow form	Declining	Remove	Municipal	1.8	4			
5	Noway Maple	19.0	4.0	Poor	Narrow form	Declining	Remove	Municipal	1.8	5			
6	Noway Maple	18.0	4.0	Dead	Narrow form	Declining	Remove	Municipal	1.8	6			
301	Colorado Blue Spruce	22.0	4.0	Fair	Irregular form	Crowded by adjacent tree	Remove	Private	1.8	301			
302	Colorado Blue Spruce	20.0	4.0	Fair	Narrow form	Crowded by adjacent tree, dieback throughout	Remove	Private	1.8	302			
303	Hawthorn	20.22	7.0	Poor	Double stem	One sided form, crowded by adjacent tree, significant decay and dieback	Remove	Private	1.8	303			
304	Ironwood	11.0	5.0	Good	One sided form	Crowded by adjacent tree	Preserve	Boundary	1.8	304			
305	Hawthorn	18.0	5.0	Poor	One sided form	Cavities in stem, deadwood in crown	Remove	Private	1.8	305			
306	Sugar Maple	28.0	9.0	Good	One sided form	Crowded by adjacent tree	Preserve	Boundary	1.8	306			
307	Sugar Maple	31.0	11.0	Good	One sided form	Crowded by adjacent tree	Preserve	Boundary	2.4	307			
308	Sugar Maple	33.0	12.0	Good	One sided form	Crowded by adjacent tree	Preserve	Boundary	2.4	308			
309	Austrian Pine	32.0	7.0	Good	Asymmetrical form	Elevated crown	Remove	Private	2.4	309			
310	Mantoba Maple	13.18	7.0	Fair	Multi-stemmed	Asymmetrical form, leaning into subject site	Preserve	Parkland	1.8	310			
311	Shagbark Hickory	40.0	20.0	Good	Good form	High crown	Preserve	Parkland	2.4	311			
312	Red Oak	26.30	15.0	Good	Double stem	One stem with decay, asymmetrical form	Preserve	Parkland	2.4	312			
313	Sugar Maple	20.0	5.0	Good	Asymmetrical form	Crowded by adjacent tree	Preserve	Parkland	1.8	313			
314	Apple	14.0	7.0	Fair	One sided form	Subordinated crown	Preserve	Parkland	1.8	314			
315	White Ash	6.0	3.0	Good	One sided form	Crowded by adjacent tree	Preserve	Parkland	1.8	315			
316	Red Oak	59.0	18.0	Good	Good form	High crown, leaning south	Preserve	Parkland	3.0	316			
317	Shagbark Hickory	22.0	10.0	Good	One sided form	Crown subordinated by adjacent tree, most of crown overhangs subject site	Preserve	Parkland	1.8	317			
318	Ironwood	25.0	9.0	Good	One sided form	Crown subordinated by adjacent tree, most of crown overhangs subject site	Preserve	Parkland	1.8	318			
319	White Oak	84.0	20.0	Good	High crown	Mature, some dieback in upper crown	Preserve	Parkland	3.0	319			
320	Black Cherry	13.5	6.0	Fair	One sided form	Subordinated crown	Preserve	Parkland	1.8	320			
321	Sugar Maple	30.5	10.0	Good	Good form	Crowded by adjacent tree	Preserve	Parkland	2.4	321			
322	Sugar Maple	36.0	10.0	Good	One sided form	Crowded by adjacent tree	Preserve	Parkland	2.4	322			
323	Hawthorn	18.0	7.0	Good	Multi-stemmed	Leaning south, one sided form	Preserve	Parkland	1.8	323			
324	Sugar Maple	68.0	15.0	Good	One sided form	High crown	Preserve	Parkland	4.2	324			
325	Sugar Maple	50.0	10.0	Good	One sided form	High crown	Preserve	Parkland	3.0	325			
326	Sugar Maple	11.0	8.0	Good	One sided form	Crowded by adjacent tree	Preserve	Parkland	1.8	326			
327	Sugar Maple	11.0	6.0	Good	One sided form	Crowded by adjacent tree	Preserve	Parkland	1.8	327			
328	Sugar Maple	17.0	7.0	Good	One sided form	Crowded by adjacent tree	Preserve	Parkland	1.8	328			
329	Red Oak	48.0	20.0	Good	High crown	Slightly asymmetrical crown	Preserve	Parkland	3.0	329			
330	Sugar Maple	11.0	6.0	Good	Narrow form	Crowded by adjacent tree	Preserve	Parkland	1.8	330			
331	Blackwood	20.0	10.0	Good	One sided form	Crowded by adjacent tree	Preserve	Parkland	1.8	331			
332	Shagbark Hickory	47.0	16.0	Good	Narrow form	Broad, asymmetrical canopy	Preserve	Parkland	3.0	332			
333	Sugar Maple	25.0	15.0	Good	High crown	Good form	Preserve	Parkland	1.8	333			
334	Blackwood	25.0	8.0	Fair	One sided form	Leaning south	Preserve	Parkland	1.8	334			
335	Ironwood	20.0	6.0	Good	Narrow form	Crowded by adjacent tree	Preserve	Parkland	1.8	335			
336	Sugar Maple	30.5	8.0	Good	Narrow form	Asymmetrical form, crowded by adjacent tree	Preserve	Parkland	2.4	336			
337	Shagbark Hickory	31.5	8.0	Good	One sided form	Crowded by adjacent tree	Preserve	Parkland	2.4	337			
338	Red Oak	42.0	12.0	Good	One sided form	Subordinated crown, some dieback on lower branches	Preserve	Parkland	3.0	338			
339	Austrian Pine	22.0	6.0	Good	Irregular form	Elevated crown	Remove	Private	1.8	339			
340	Austrian Pine	1.0	4.0	Good	Narrow form	Elevated crown	Remove	Private	1.2	340			
341	Austrian Pine	30.0	5.0	Good	One sided form	Multiple leaders, leaning	Remove	Private	2.4	341			
342	Russian Olive	22.0	8.0	Fair	Multi-stemmed	Irregular form, leaning, internal dieback throughout	Remove	Private	1.8	342			
343	Colorado Blue Spruce	40.0	8.0	Good	Conical stem	Elevated crown, crowded by adjacent tree	Remove	Private	2.4	343			
344	Colorado Blue Spruce	21.0	4.0	Fair	One sided form	Crowded by adjacent tree	Remove	Private	1.8	344			
345	Colorado Blue Spruce	30.0	5.0	Good	One sided form	Crowded by adjacent tree	Remove	Private	2.4	345			
346	Pyramidal English Oak	25.0	5.0	Good	Good form	Minor dieback on lower branches	Remove	Private	1.8	346			
347	Pyramidal English Oak	18.0	4.5	Fair	Good form	Dieback on lower branches	Remove	Private	1.8	347			
348	Austrian Pine	45.0	8.0	Good	Good form	Multiple leaders	Remove	Private	3.0	348			
349	Austrian Pine	30.0	6.0	Good	Good form	Dieback on lower branches	Remove	Private	1.8	349			
350	Pyramidal English Oak	30.0	5.0	Good	Good form	Minor upper crown dieback	Remove	Private	2.4	350			
351	Pyramidal English Oak	22.0	5.0	Good	Good form		Remove	Private	1.8	351			
352	Noway Maple	23.0	6.0	Poor	Good form	Gridlike roots, significant internal crown dieback	Remove	Private	1.8	352			
353	Noway Maple	24.5	6.0	Poor	Good form	Half dead	Remove	Private	1.8	353			
354	Noway Maple	24.0	7.0	Fair	Good form	Dead leader, internal crown dieback	Remove	Private	1.8	354			
355	Noway Maple	28.0	6.0	Fair	Good form	Internal crown dieback	Remove	Private	1.8	355			
356	Noway Maple	28.5	6.0	Poor	Good form	Significant dieback in crown	Remove	Private	1.8	356			
357	English Oak	28.0	7.0	Poor	Good form	Dead leader, upper crown dieback	Remove	Private	1.8	357			
358	English Oak	22.5	6.0	Poor	Good form	Declining	Remove	Private	1.8	358			
359	English Oak	27.0	7.0	Fair	Good form	Dead leader, internal crown dieback	Remove	Private	1.8	359			
360	English Oak	21.0	7.0	Poor	Good form	Half dead, declining	Remove	Private	1.8	360			
361	English Oak	24.0	7.0	Poor	Good form	Significant crown dieback throughout	Remove	Private	1.8	361			
362	English Oak	23.5	6.0	Good	Good form	Minor twig tip dieback in crown	Remove	Private	1.8	362			
363	English Oak	23.0	6.0	Fair	Good form	Dead leader, east side of crown	Remove	Private	1.8	363			
364	English Oak	33.5	7.0	Fair	Good form	Twig tip dieback throughout	Remove	Private	2.4	364			
365	Noway Maple	28.0	8.0	Good	Good form	Slightly crowded by adjacent tree	Remove	Private	1.8	365			
366	Noway Maple	31.0	8.0	Good	Good form	Narrow form, crowded by adjacent tree	Remove	Private	2.4	366			
367	Colorado Blue Spruce	31.0	4.0	Good	Narrow form	Elevated crown, dieback on lower branches	Remove	Private	2.4	367			
368	Colorado Blue Spruce	28.0	4.0	Good	One sided form	Crowded by adjacent tree	Remove	Private	1.8	368			
369	Noway Maple	28.5	7.0	Poor	High crown	Gridlike roots, some dieback in crown	Remove	Private	1.8	369			
370	Noway Maple	19.0	5.0	Fair	Narrow form	Pollinated crown, double leader	Remove	Private	2.4	370			
371	Honey Locust	30.0	8.0	Good	Good form	Double leaders, minor twig tip dieback in upper crown	Remove	Private	2.4	371			

2 EXISTING TREE INVENTORY

V100



GENERAL NOTES

- VERIFY ALL DIMENSIONS.
- DO NOT SCALE DRAWINGS.
- REPORT ANY DISCREPANCIES, DISCOVERED ERRORS, OR OMISSIONS TO THE LANDSCAPE ARCHITECT BEFORE PROCEEDING.
- IT IS ADVISED THAT CONTRACTORS CONTACT THE LANDSCAPE ARCHITECT PRIOR TO CONSTRUCTION TO ENSURE THE USE OF THE LATEST REVISED DRAWINGS.
- DRAWINGS AND SPECIFICATIONS ARE THE PROPERTY OF THE LANDSCAPE ARCHITECT.

KEYMAP



LEGEND

- TREE PROTECTION HOARDING
- EXISTING TREES TO BE PRESERVED
- MINIMUM TREE PROTECTION ZONE (TPZ) TREES TO BE PRESERVED
- EXISTING TREES TO BE REMOVED
- MINIMUM TREE PROTECTION ZONE (TPZ)
- VEGETATION NUMBER KEY
- STAKED DRIPLINE

Matthew C. Gehres

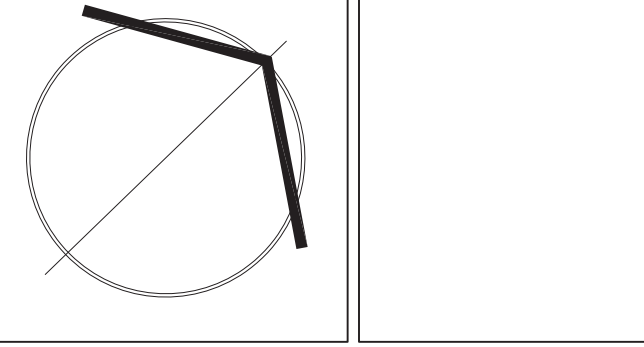
MATTHEW C. GEHRES
International Society of Arboriculture
Certified Arborist #0N-114A
Date: AUGUST 06, 2024

LIST OF DRAWINGS

- L100 LANDSCAPE CONCEPT PLAN
- L101 CONCEPTUAL EDGE MANAGEMENT CROSS-SECTIONS
- L102 CONCEPTUAL EDGE MANAGEMENT CROSS-SECTIONS
- L103 STREETSCAPE CROSS-SECTIONS (ERIN MILLS PKWY)
- L104 STREETSCAPE CROSS-SECTIONS (ERIN CENTRE BLVD)
- L105 LANDSCAPE PLAN-5th & 8th FLOOR ROOFTOP AMENITIES
- V100 PRELIMINARY TREE INVENTORY & PRESERVATION PLAN

No.	DATE	REVISION	BY
4	2024-12-04	ISSUED FOR SUBMISSION	BB
3	2024-11-18	REVISED AS PER CLIENT COMMENTS	MC
2	2024-11-04	ISSUED FOR COORDINATION	MC
1	2024-08-09	ISSUED FOR COORDINATION	MC

It is the responsibility of the Contractor and/or Owner to ensure that the drawings with the latest revisions are used for construction.



STRYBOS BARRON KING
LANDSCAPE ARCHITECTURE

PROJECT:
2555 ERIN CENTRE BLVD
MISSISSAUGA, ONTARIO

DRAWING TITLE:
PRELIMINARY
TREE INVENTORY AND
PRESERVATION PLAN

SCALE:	1:250	PROJECT No.	6000
DATE:	AUGUST 06, 2024	DRAWN BY:	A.S.M.
DRAWN BY:	A.S.M.	CHECKED BY:	B.B.
CHECKED BY:	B.B.	DRAWING No.	V100