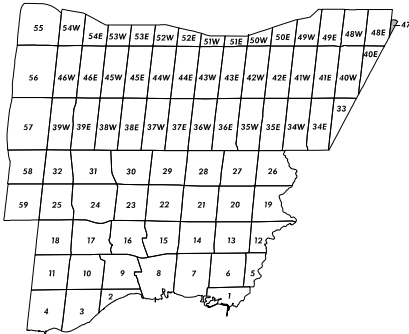


48E

CITY OF TORONTO



Parking Precinct

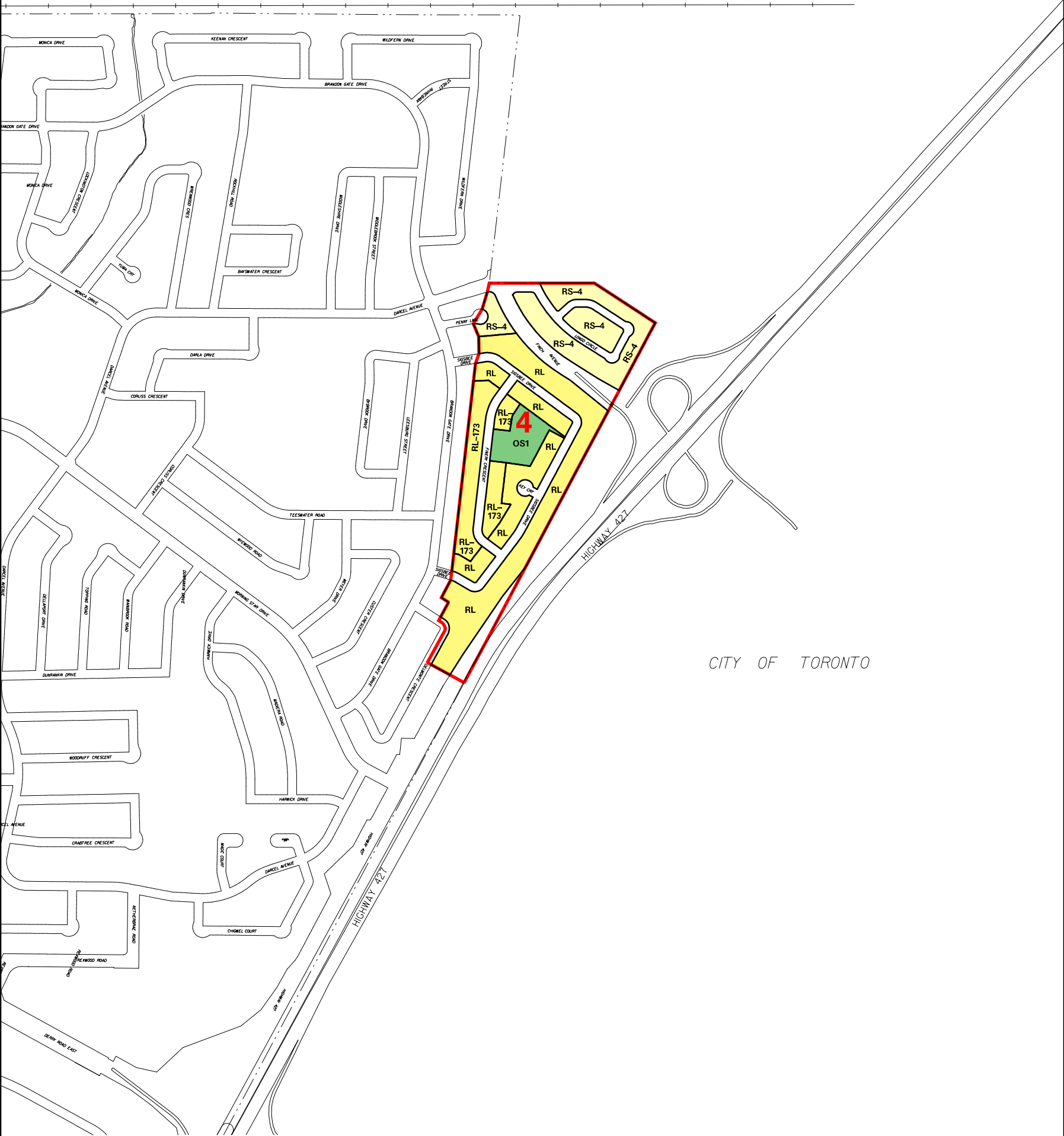
Greenlands Overlay

Zoning Notation Example:
R4-12 = R4-Exception 12

Zoning Map 47

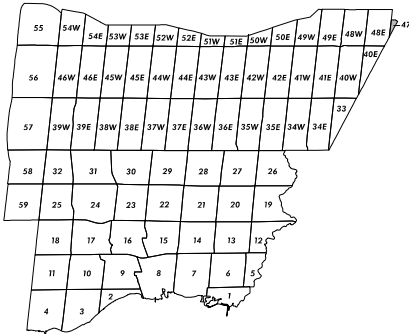
Schedule "B" To
By-law No. 0225-2007

Revised: 2025 April 30



CITY OF TORONTO

48E



Parking Precinct

Greenlands Overlay

Zoning Notation Example:
R4-12 = R4-Exception 12

Zoning Map 47

Schedule "B" To
By-law No. 0225-2007

Revised: 2025 April 30

ZONING BY-LAW 0225–2007

ZONING CATEGORIES

ZONES

Residential

- R12 - R14, R16

Detached Dwellings
- RL

Large Lot Detached and Semi-Detached
- RS

Small Lot Detached and Semi-Detached
- RM3

Semi-Detached
- RM4, RM5, RM6

Townhouse
- RM7

Detached, Semi-Detached, Duplex and Triplex
- RM8 - RM12

Back to Back, Stacked Townhouses
- RA1 - RA5

Apartment, Long-Term Care, Retirement Buildings

Office

- O1

Minor Office
- O2

Major Office
- O3

General Office

Commercial

- C1

Convenience Commercial
- C2

Neighbourhood Commercial
- C3

General Commercial
- C4

Mainstreet Commercial
- C5

Motor Vehicle Commercial

Downtown Core

- CC1

Core Commercial
- CC2, CC4

Mixed Use
- CC3

Mixed Use - Transition Area
- CCO

Office
- CCOS

Open Space

Employment

- E1

Employment in Nodes
- E2

Employment
- E3

Industrial

Open Space

- OS1

Community Park
- OS2

City Park
- OS3

Cemetery

Greenlands

- G1

Natural Hazards
- G2

Natural Features
- Greenlands Overlay

Parkway Belt

- PB1, PB2

Parkway Belt

Utility

- U

Utility

Institutional

- I

Hospital and University / College

Development

- D

Existing Use

Buffer

- B

Buffer, Berm, Fence

Airport

- AP

Lester B. Pearson International Airport



MISSISSAUGA

Revised: 2025 April 30