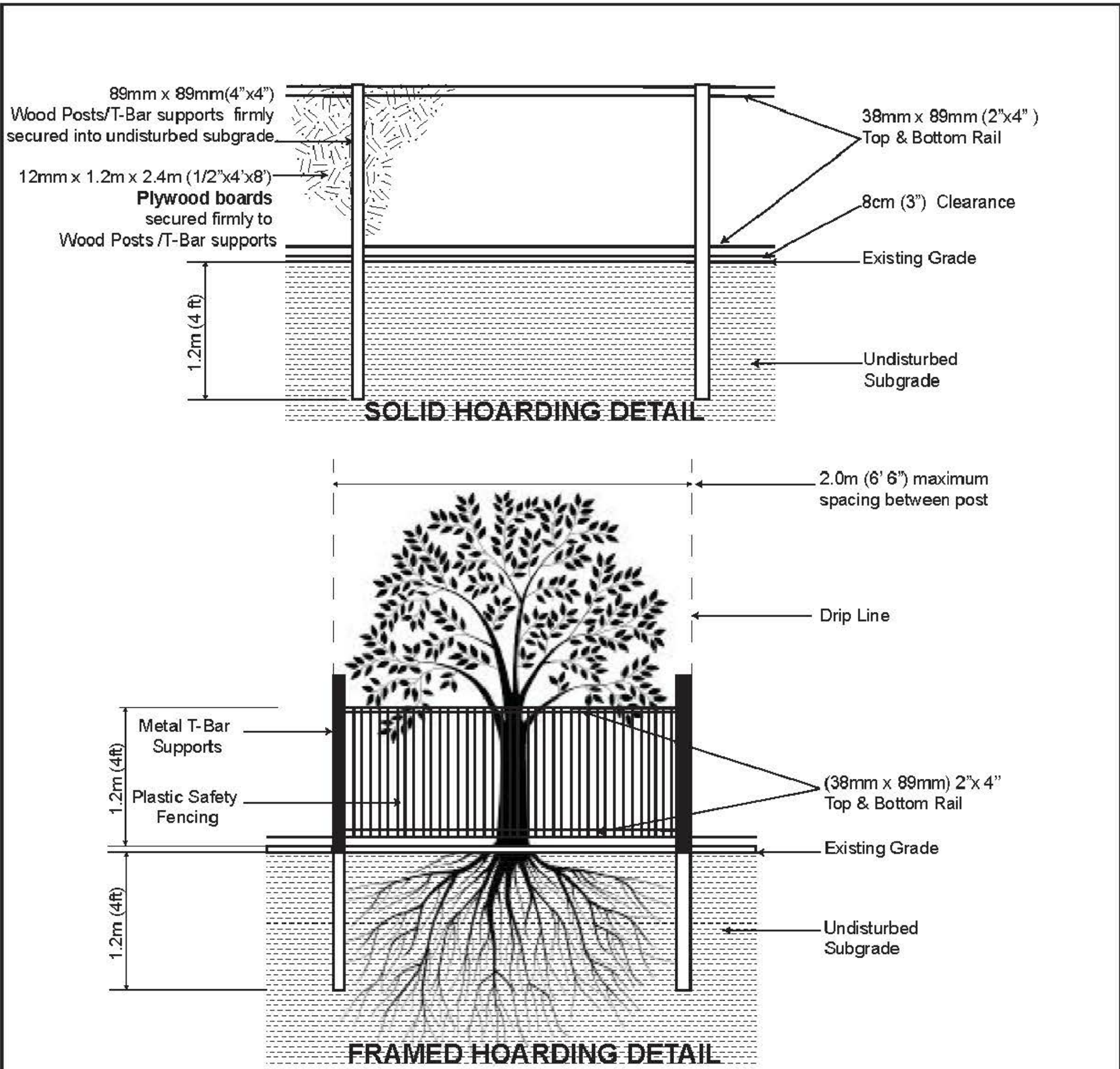


EXISTING TREE INVENTORY										
KEY	SPECIES	DBH (centimetres)	CROWN (metres)	HEALTH G/F/P	STRUCTURE	COMMENTS	PRESERVATION DIRECTION Remove	OWNERSHIP Private	MIN. TPZ (metres)	KEY
170	Horse Chestnut	65	12	Fair	Double Leader	Included bark, major deadwood, dieback in canopy, decay in trunk	Remove	Private	4.2	170
171	White Spruce	29	6	Good	Pyramidal	Elevated branches, poor pruning	Remove	Private	1.8	171
172	White Spruce	23	6	Good	Pyramidal	Crowded by adjacent tree, elevated branches, poor pruning	Remove	Private	1.8	172
173	White Spruce	31	6	Good	Pyramidal	Crowded by adjacent tree, elevated branches, poor pruning	Remove	Private	2.4	173
174	White Spruce	30	6	Poor	Leaning	Elevated branches, poor pruning, 80% of canopy is dead, mechanical damage at base	Remove	Private	1.8	174
175	Black Walnut	21	8	Good	Double Leader	Crowded by adjacent tree, broken branches, minor deadwood	Remove	Private	1.8	175
176	Black Walnut	22	8	Good	Multi-leader	Crowded by adjacent tree, broken branches, minor deadwood	Remove	Private	1.8	176
177	Scots Pine	37	8	Good	Irregular	Asymmetrical form	Remove	Private	1.8	177
178	Norway Spruce	57	10	Good	Pyramidal	Crowded by adjacent tree, elevated branches, poor pruning, broken branches, minor deadwood	Remove	Private	3.6	178
179	Norway Spruce	78	14	Poor	Double Leader	Crowded by adjacent tree, elevated branches, poor pruning, broken branches, major deadwood declining	Remove	Private	4.8	179
180	Scots Pine	36	8	Fair	One-sided	Crowded by adjacent tree	Remove	Private	2.4	180
181	Norway Spruce	54	8	Good	Double Leader	Poor pruning, elevated branching	Remove	Private	3.6	181
182	White Oak	68	14	Fair	Irregular	Poor pruning, minor deadwood	Remove	Private	3.6	182
183	Horse Chestnut	58	12	Poor	Irregular	Broken branches, minor dead wood, branching to grade	Remove	Private	3.6	183
184	Black Locust	41	12	Good	Irregular	Minor deadwood, branching to grade	Preserve	Municipal	2.4	184
185	Black Walnut	27	8	Fair	Irregular	Crowded by adjacent tree, major deadwood, large open wound, broken branches, minor deadwood	Preserve	Neighbour	1.8	185
186	Kentucky Coffee Tree	5	2	Good	Immature	Recently planted tree	Preserve	Neighbour	1.2	186
187	Red Oak	5	2	Fair	Immature	Recently planted tree	Preserve	Neighbour	1.2	187
188	Red Oak	5	2	Good	Immature	Recently planted tree	Preserve	Neighbour	1.2	188
189	Sugar Maple	5	2	Fair	Immature	Recently planted tree	Preserve	Neighbour	1.2	189
190	Sugar Maple	5	2	Poor	Dead	Recently planted tree	Preserve	Neighbour	1.2	190
191	Sugar Maple	5	2	Good	Immature	Recently planted tree	Preserve	Neighbour	1.2	191
192	Sugar Maple	5	2	Poor	Immature	Recently planted tree	Preserve	Neighbour	1.2	192
193	Freeman Maple	5	2	Good	Immature	Recently planted tree	Preserve	Neighbour	1.2	193
194	Freeman Maple	7	2	Good	Immature	Recently planted tree	Preserve	Neighbour	1.2	194
195	Freeman Maple	7	2	Good	Immature	Recently planted tree	Preserve	Neighbour	1.2	195
196	American Elm	7	2	Good	Immature	Recently planted tree	Preserve	Neighbour	1.2	196
197	American Elm	7	2	Good	Immature	Recently planted tree	Preserve	Neighbour	1.2	197
198	American Elm	7	2	Good	Immature	Recently planted tree	Preserve	Neighbour	1.2	198
199	Freeman Maple	7	2	Good	Immature	Recently planted tree	Preserve	Neighbour	1.2	199
200	Freeman Maple	7	2	Good	Immature	Recently planted tree	Preserve	Neighbour	1.2	200
201	Freeman Maple	7	2	Good	Immature	Recently planted tree	Preserve	Neighbour	1.2	201
202	Sugar Maple	5	2	Good	Immature	Recently planted tree	Preserve	Neighbour	1.2	202
203	Sugar Maple	5	2	Good	Immature	Recently planted tree	Preserve	Neighbour	1.2	203
204	Sugar Maple	5	2	Good	Immature	Recently planted tree	Preserve	Neighbour	1.2	204
205	Sugar Maple	5	2	Good	Immature	Recently planted tree	Preserve	Neighbour	1.2	205
206	Red Oak	5	2	Poor	Immature	Recently planted tree	Preserve	Neighbour	1.2	206
207	Red Oak	5	2	Poor	Immature	Recently planted tree	Preserve	Neighbour	1.2	207
208	Red Oak	5	2	Good	Immature	Recently planted tree	Preserve	Neighbour	1.2	208

PLANT INVENTORY



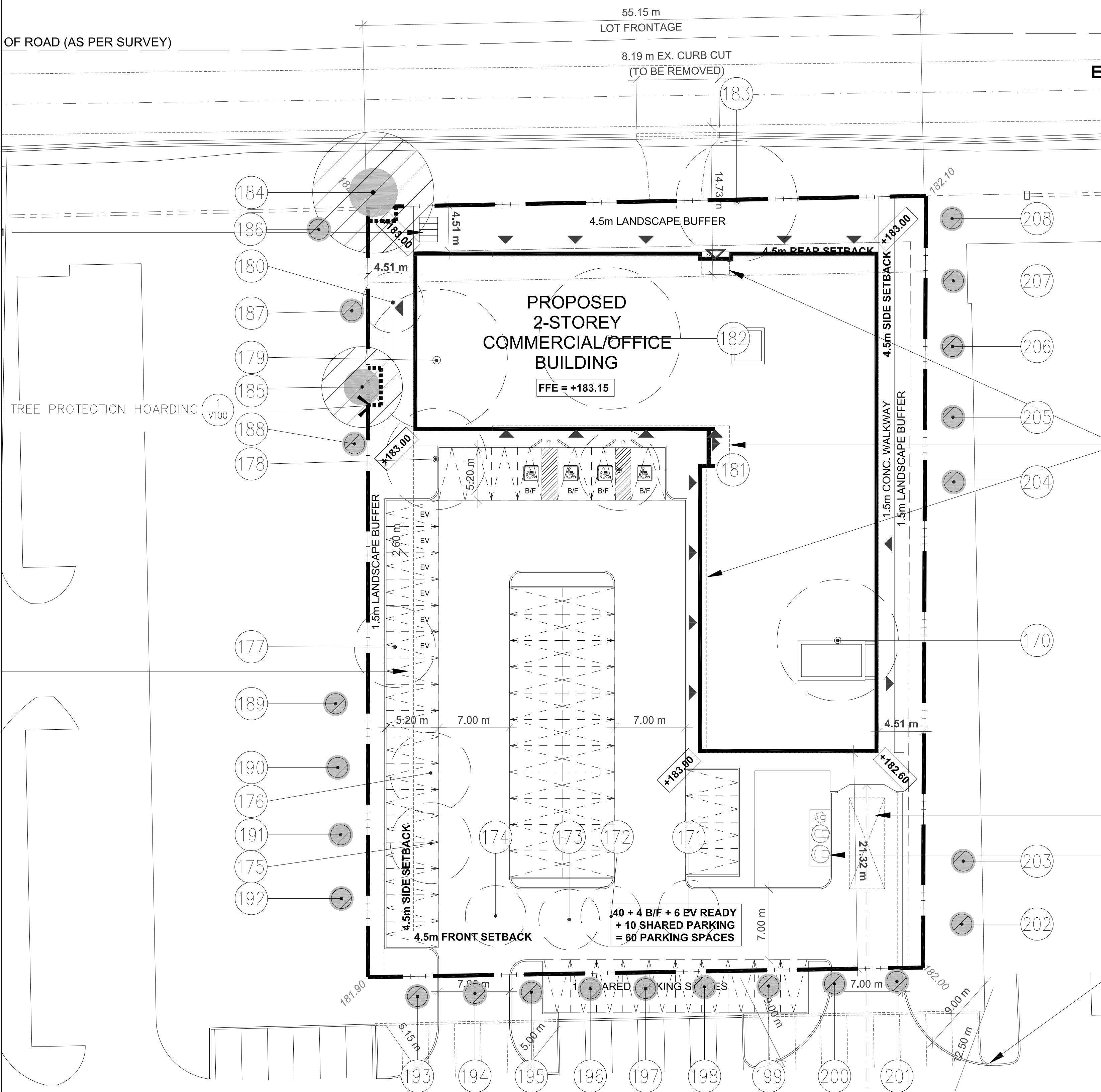
- NOTES:**
- Hoarding details to be determined following initial site inspection.
 - Private tree hoarding to be approved by Development & Design ; City tree hoarding to be approved by Community Services Dept.
 - Hoarding must be supplied, installed and maintained by the applicant throughout all phases of construction. **Inspection must be conducted by the Development and Design Division prior to removing any/all private hoarding.**
 - Do not allow water to collect and pond behind or within hoarding.
 - T-bar supports are acceptable alternative to 4x4 posts. U-shaped metal supports will not be accepted.**
 - Plywood** must be utilized for 'solid' hoarding. OSB/Chipboard will not be accepted for solid hoarding. Plywood sheets must be installed on "construction" side of frame.
 - Applicant is responsible to ensure utility locates are completed within city boulevard prior to installing framed hoarding.

TREE PRESERVATION HOARDING

SCALE: N.T.S. DATE: June 2017



OF ROAD (AS PER SURVEY)



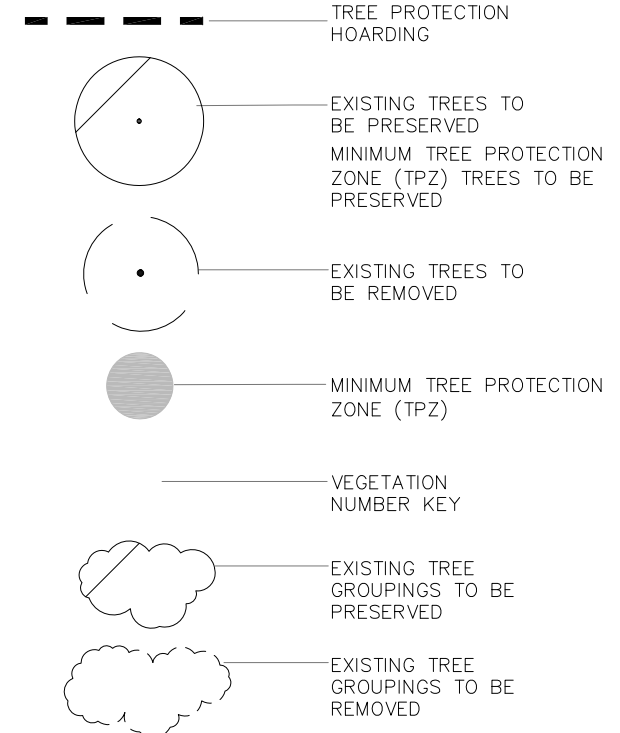
GENERAL NOTES

- VERIFY ALL DIMENSIONS.
- DO NOT SCALE DRAWINGS.
- REPORT ANY DISCREPANCIES, DISCOVERED ERRORS, OR OMISSIONS TO THE LANDSCAPE ARCHITECT BEFORE PROCEEDING.
- IT IS ADVISED THAT CONTRACTORS CONTACT THE LANDSCAPE ARCHITECT PRIOR TO CONSTRUCTION TO ENSURE THE USE OF THE LATEST REVISED DRAWINGS.
- DRAWINGS AND SPECIFICATIONS ARE THE PROPERTY OF THE LANDSCAPE ARCHITECT.

KEY MAP



LEGEND

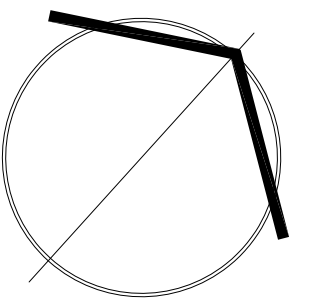


Matthew C. Gehres

MATTHEW C. GEHRES
International Society of Arboriculture
Certified Arborist #0N-1114A
Date: SEPT 6, 2023



It is the responsibility of the Contractor and/or Owner to ensure that the drawings with the latest revisions are used for construction.



SBK
STRYBOS BARRON KING
LANDSCAPE ARCHITECTURE

PROJECT:
3650 EGLINTON AVE W.
MISSISSAUGA, ONTARIO

DRAWING TITLE:
TREE INVENTORY
AND PROTECTION PLAN

SCALE: 1:250 PROJECT No. 5861
DATE: SEPT 6, 2023
DRAWN BY: GC DRAWING No. V100
CHECKED BY: MG