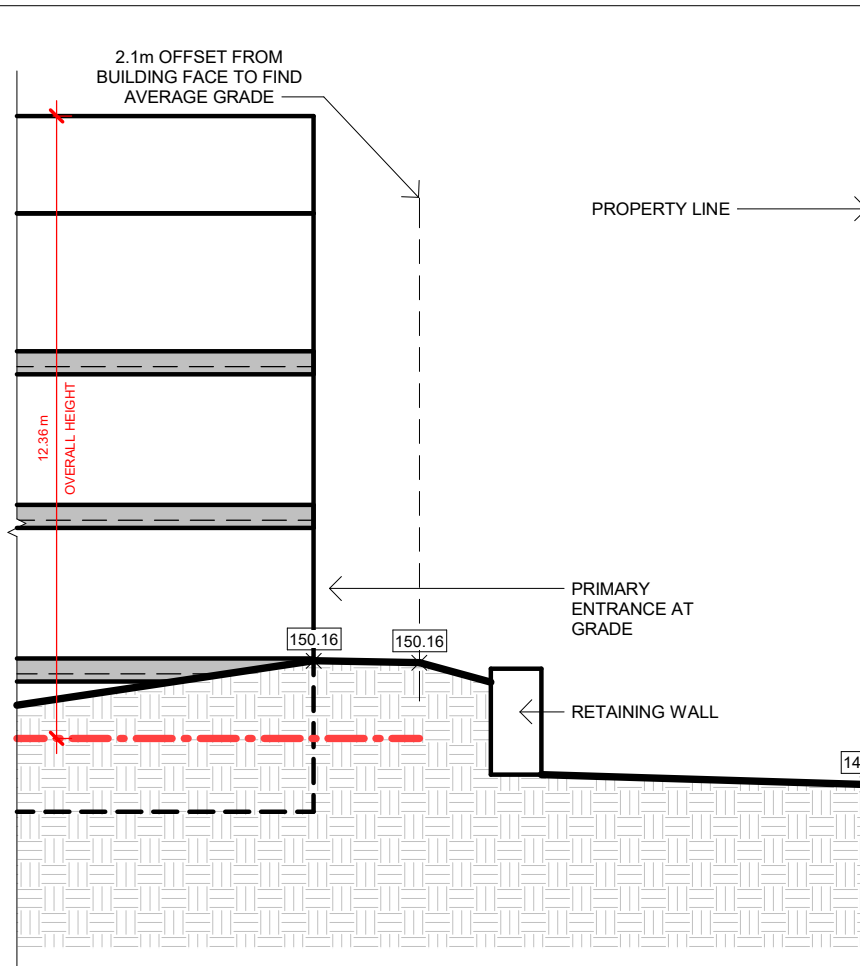
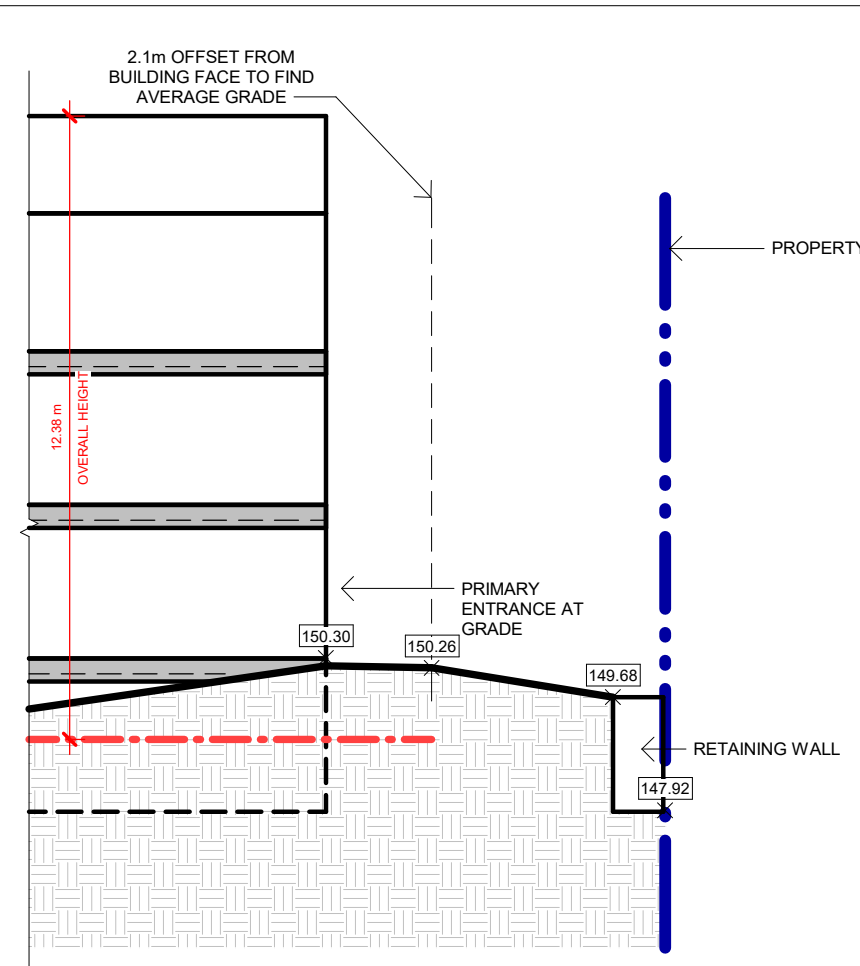
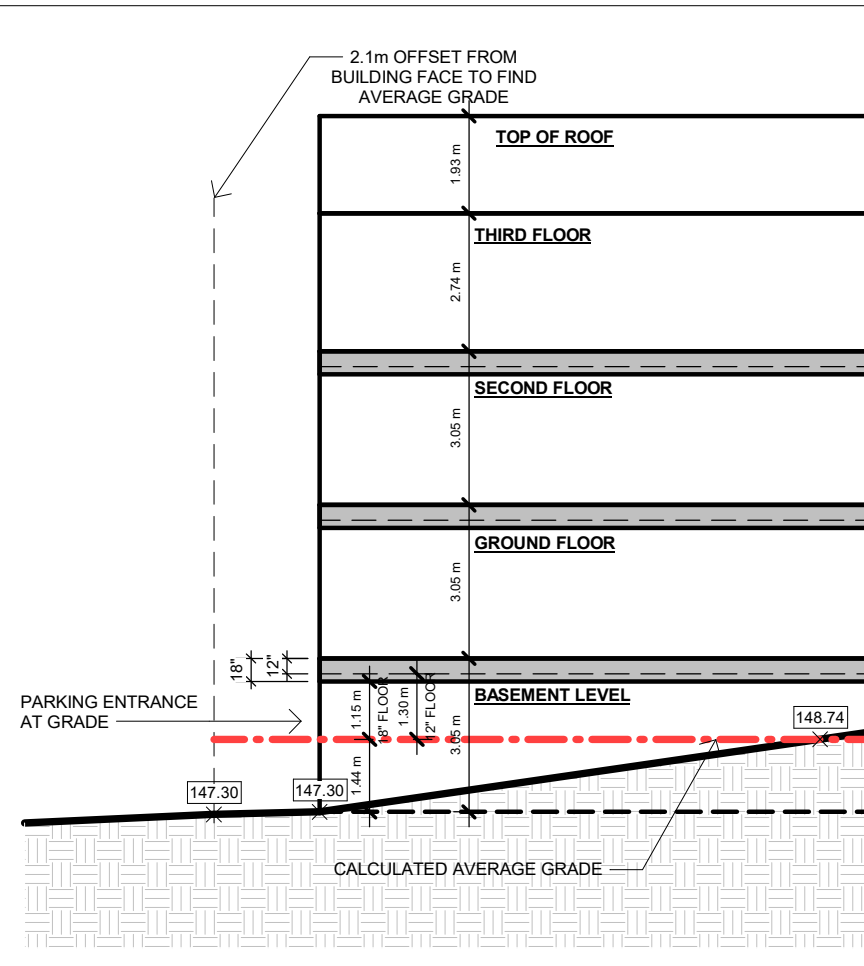


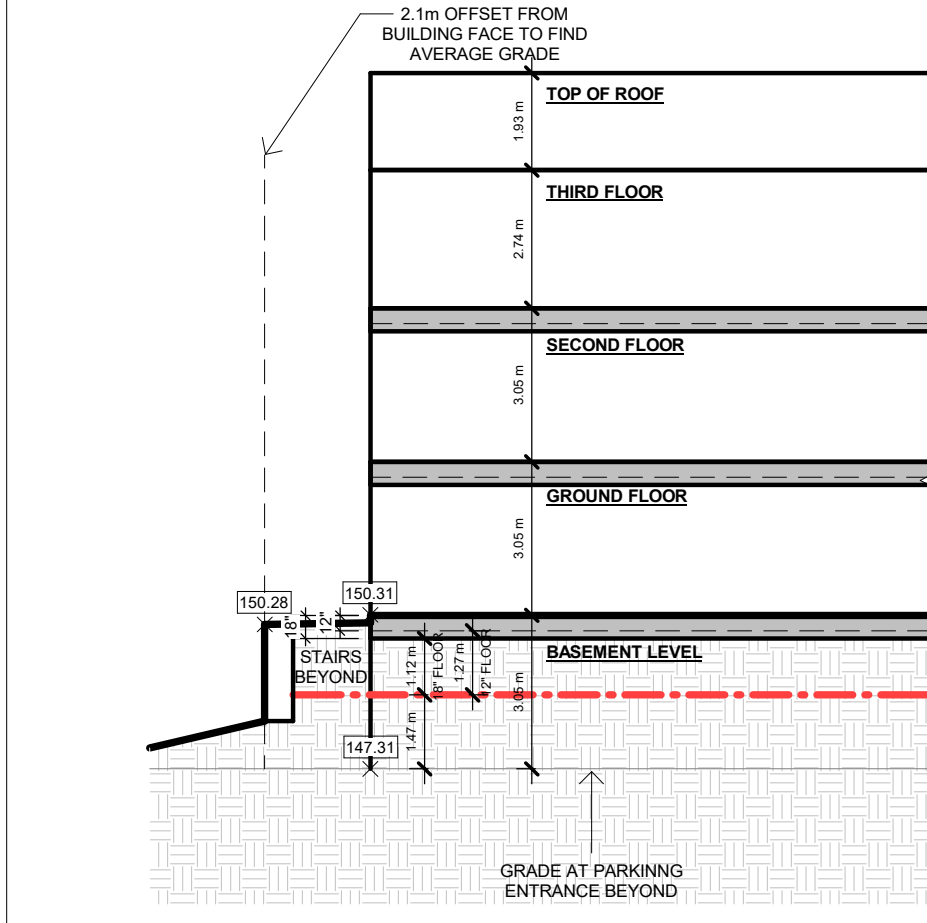
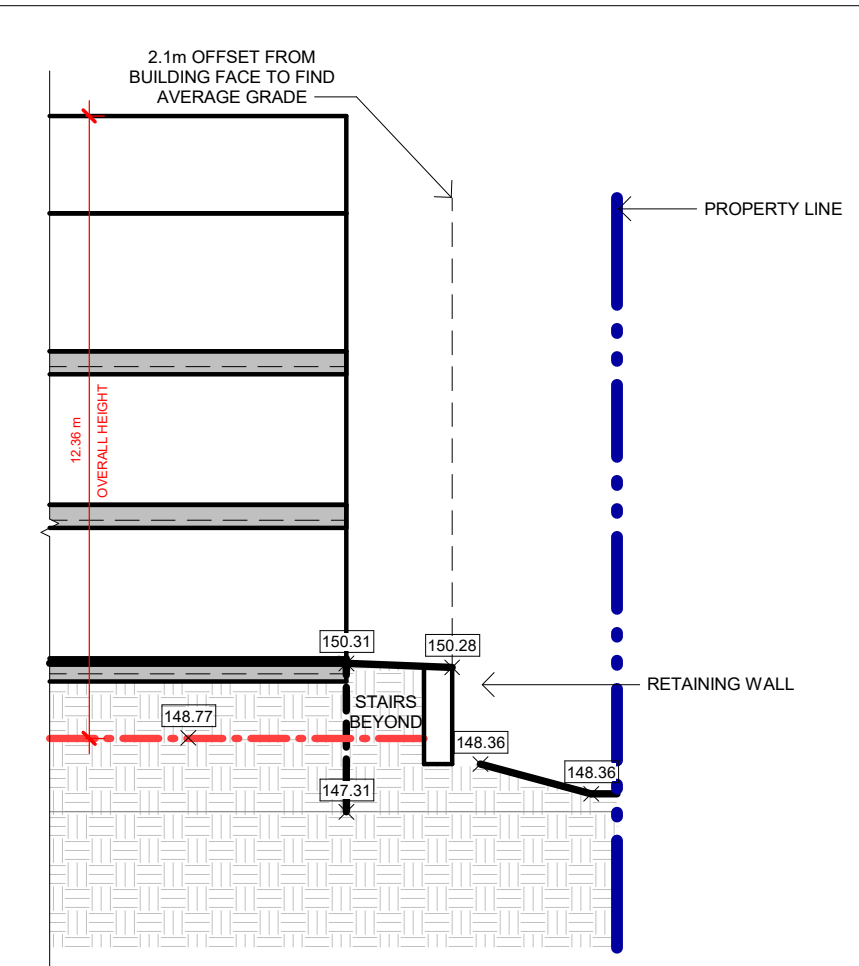
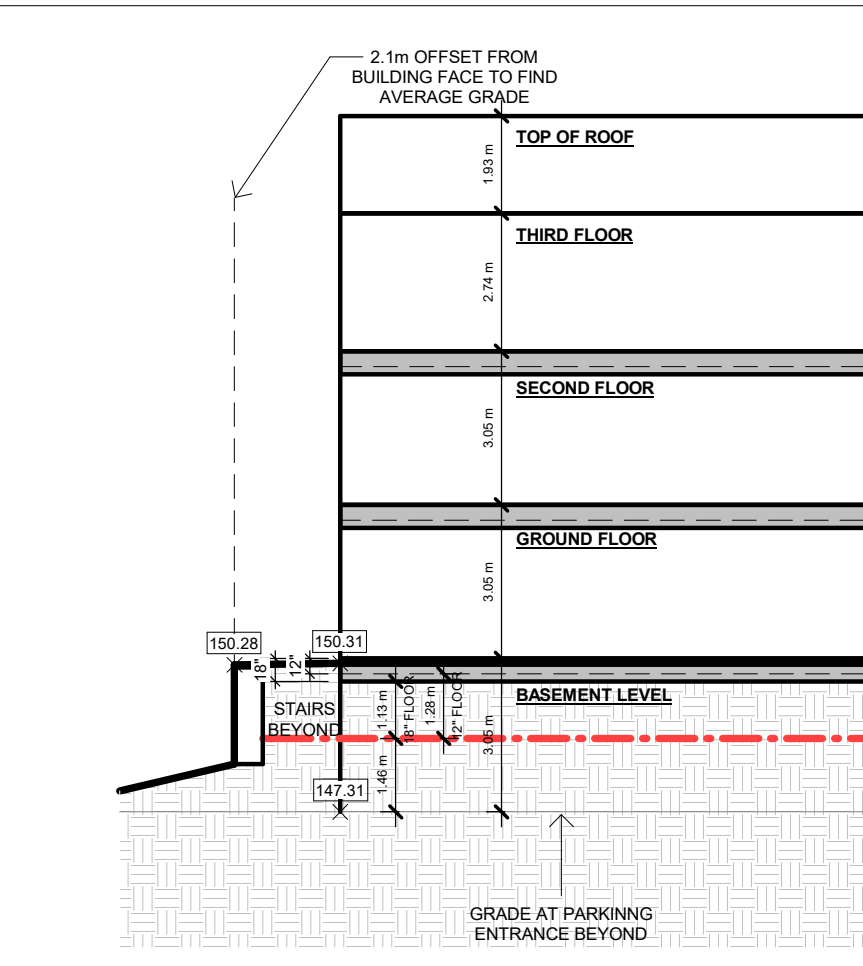
BLOCK 1



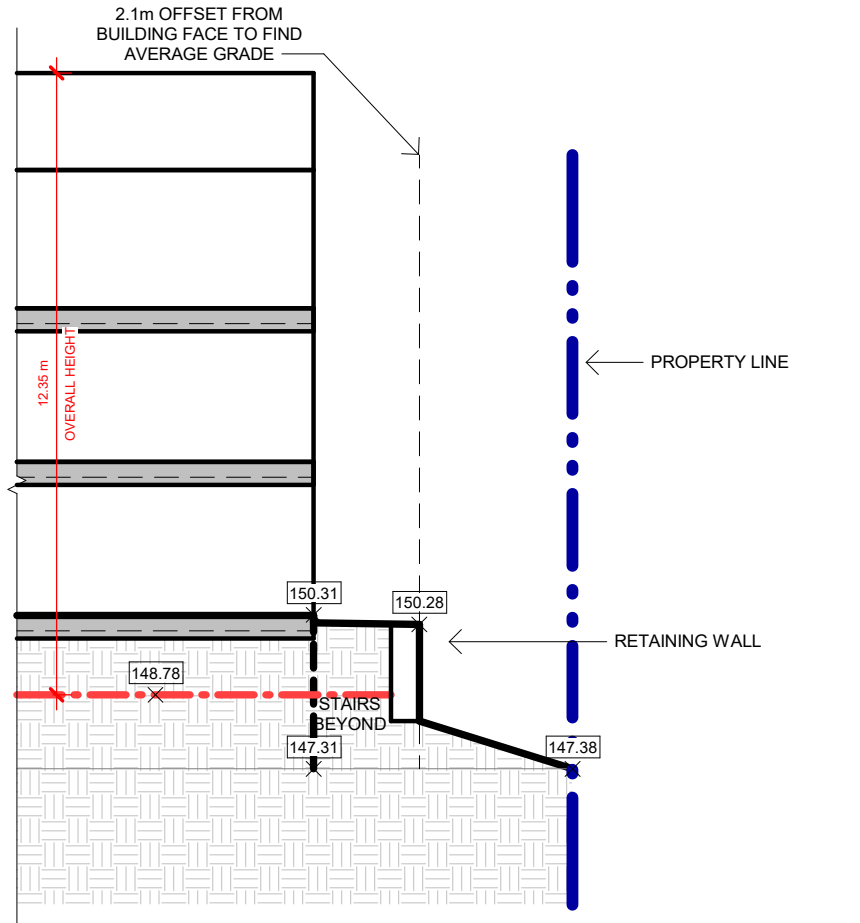
BLOCK 2



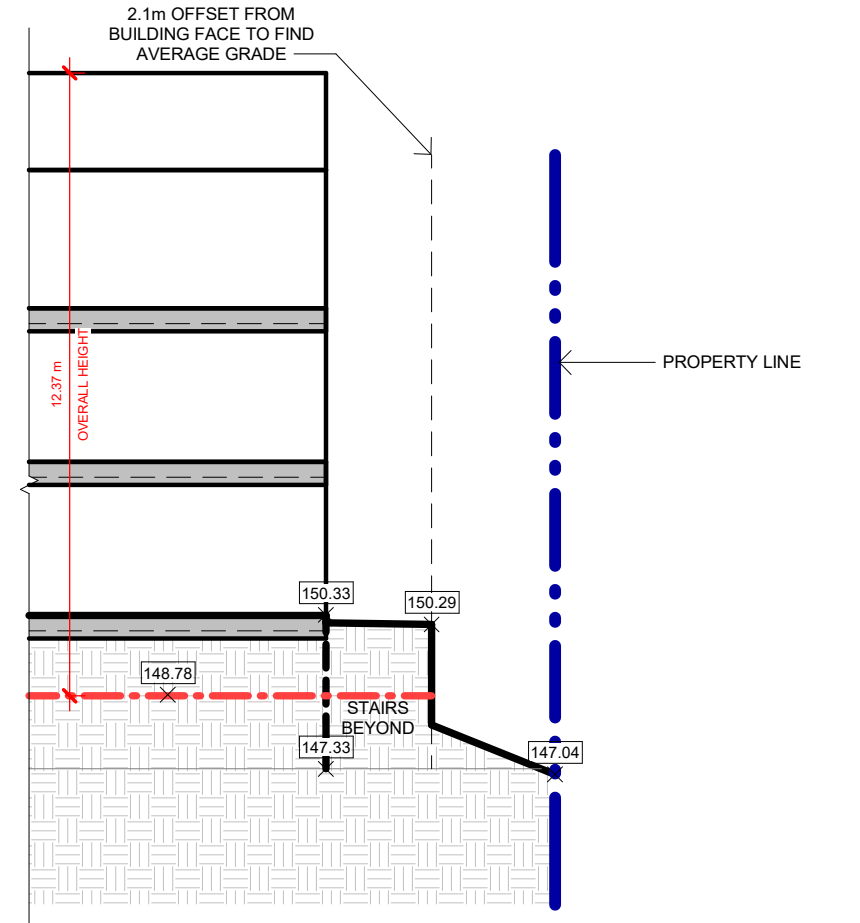
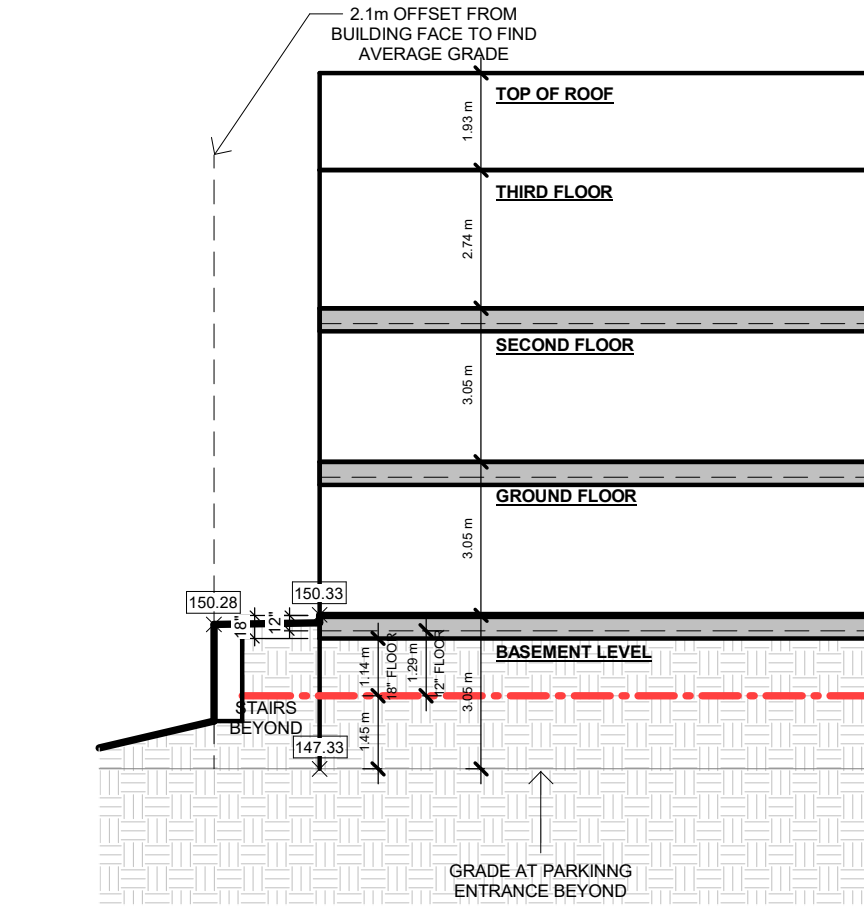
BLOCK 3



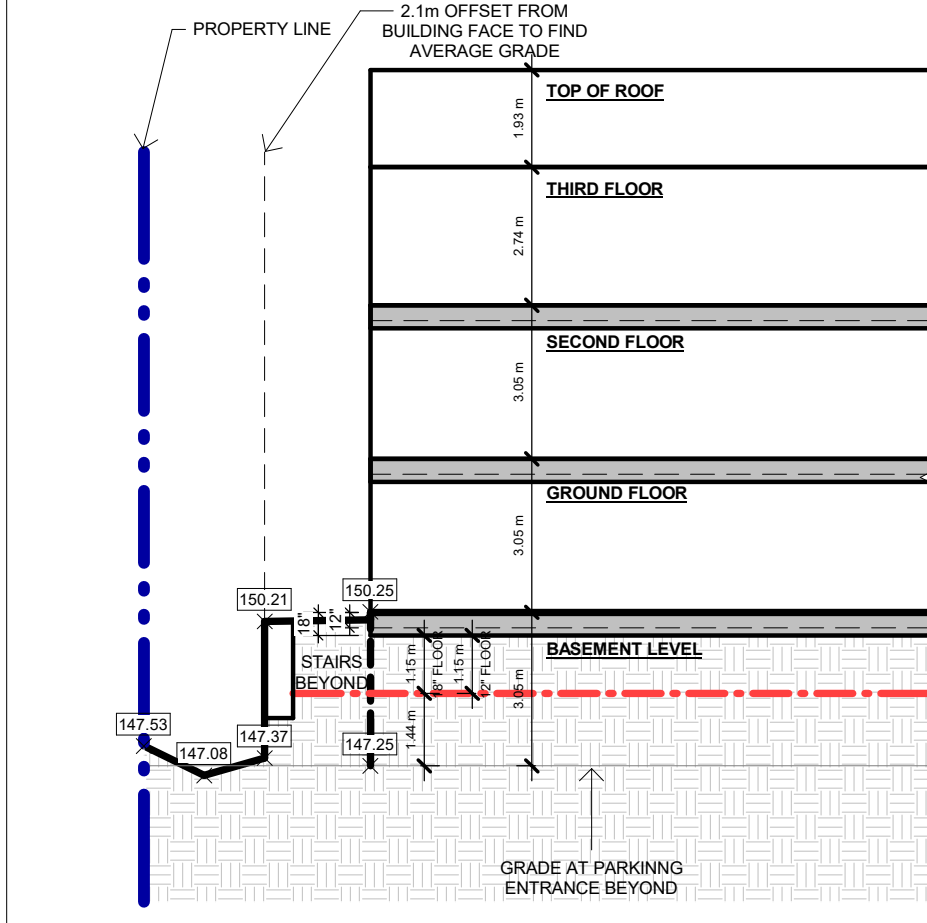
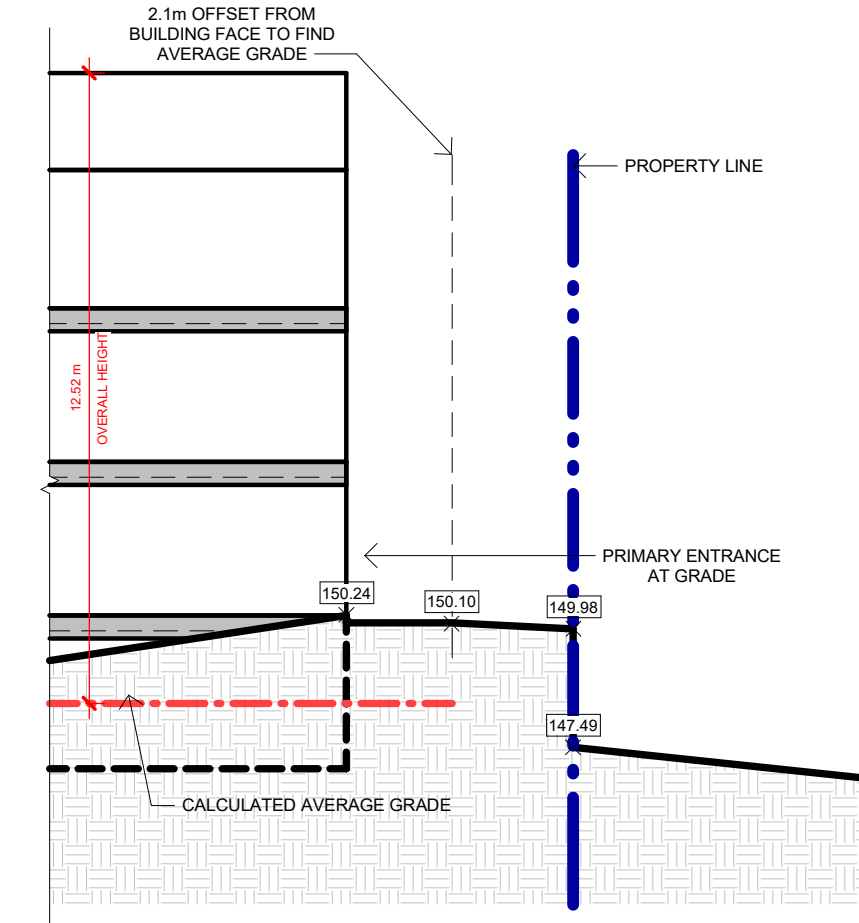
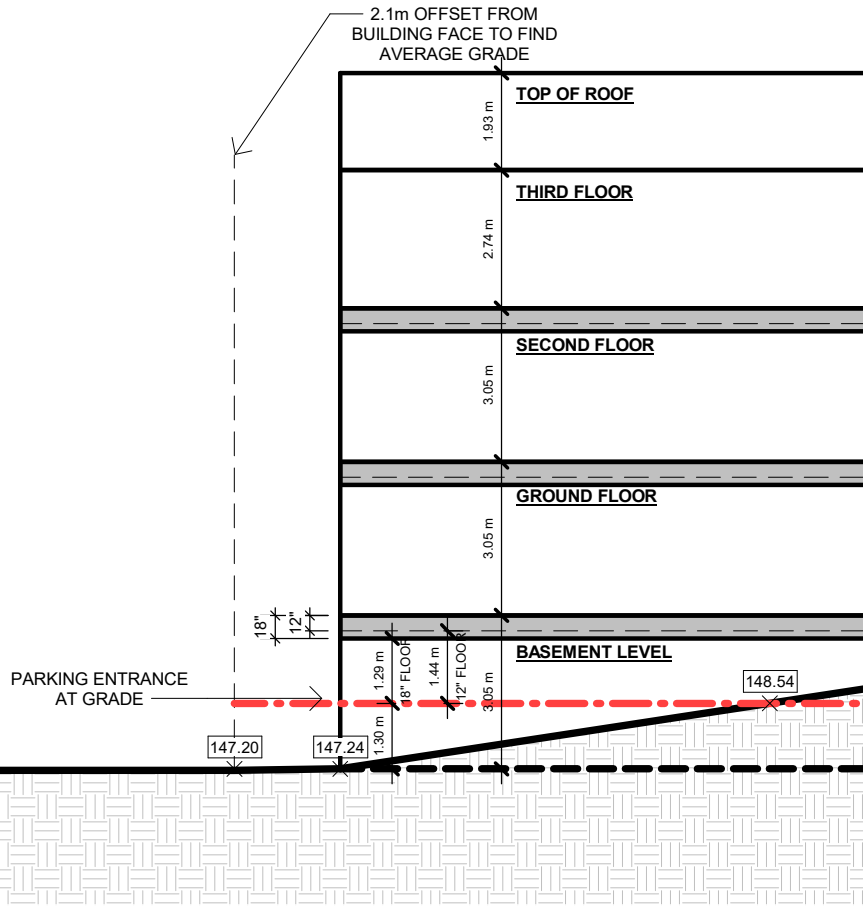
BLOCK 4



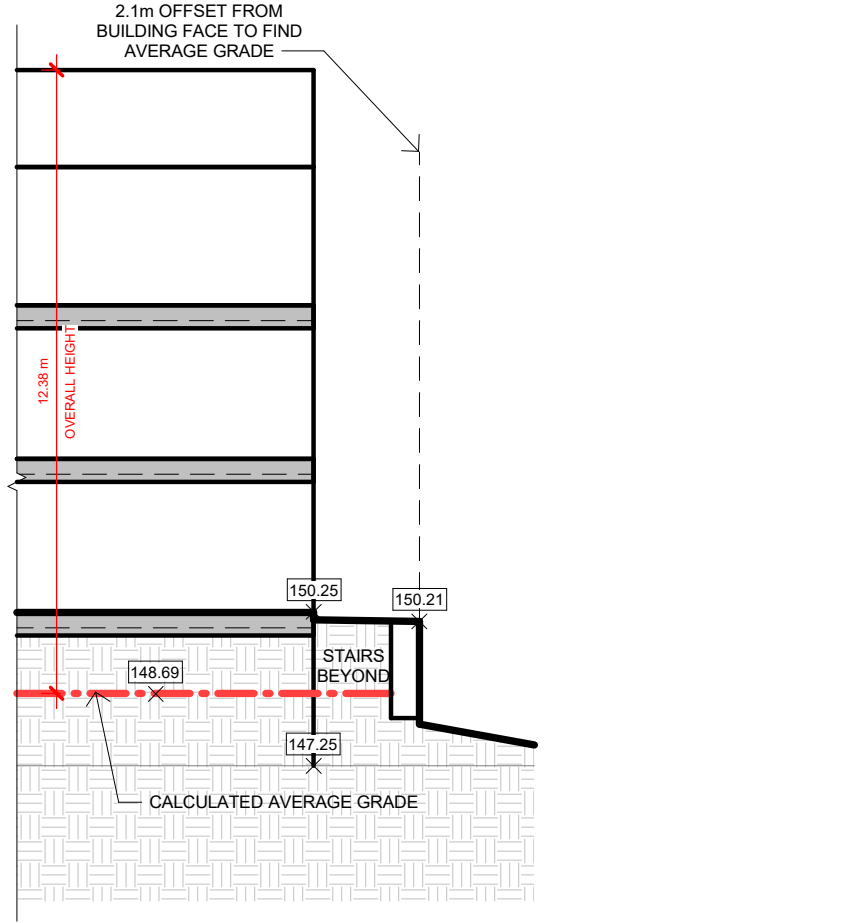
BLOCK 5



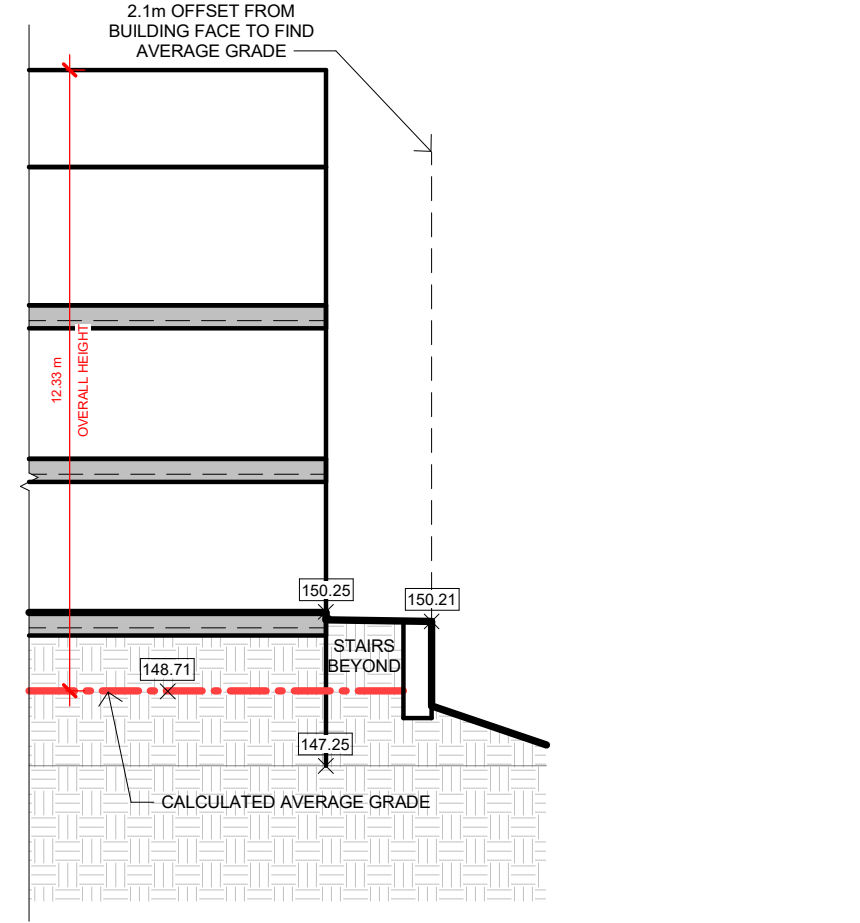
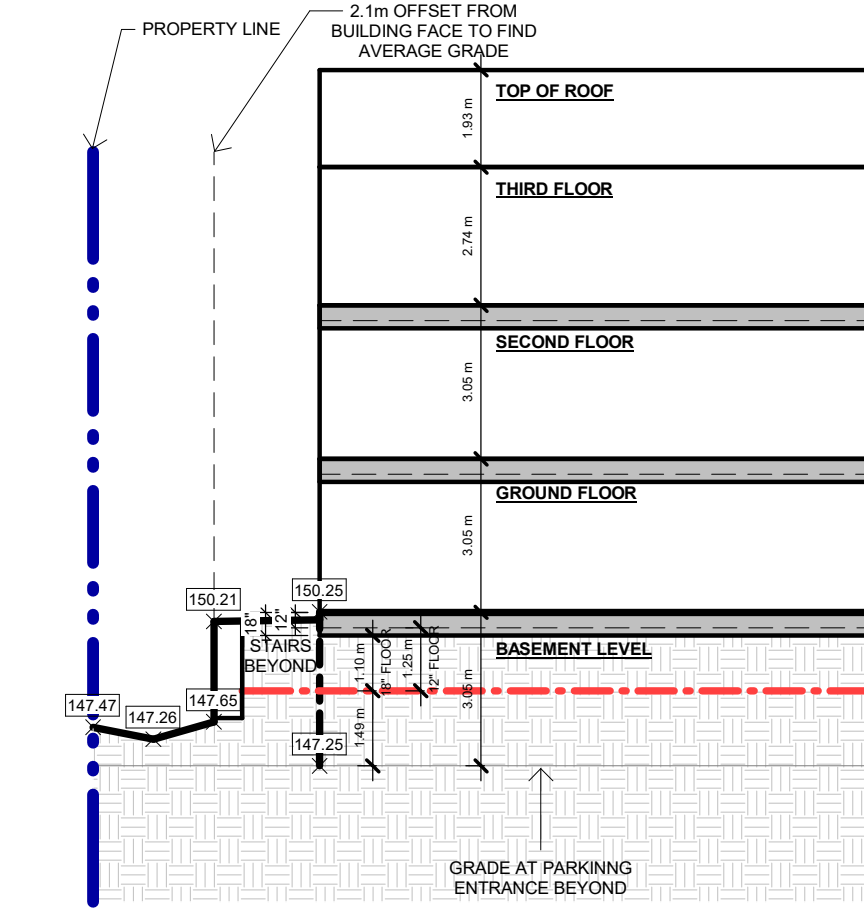
BLOCK 6



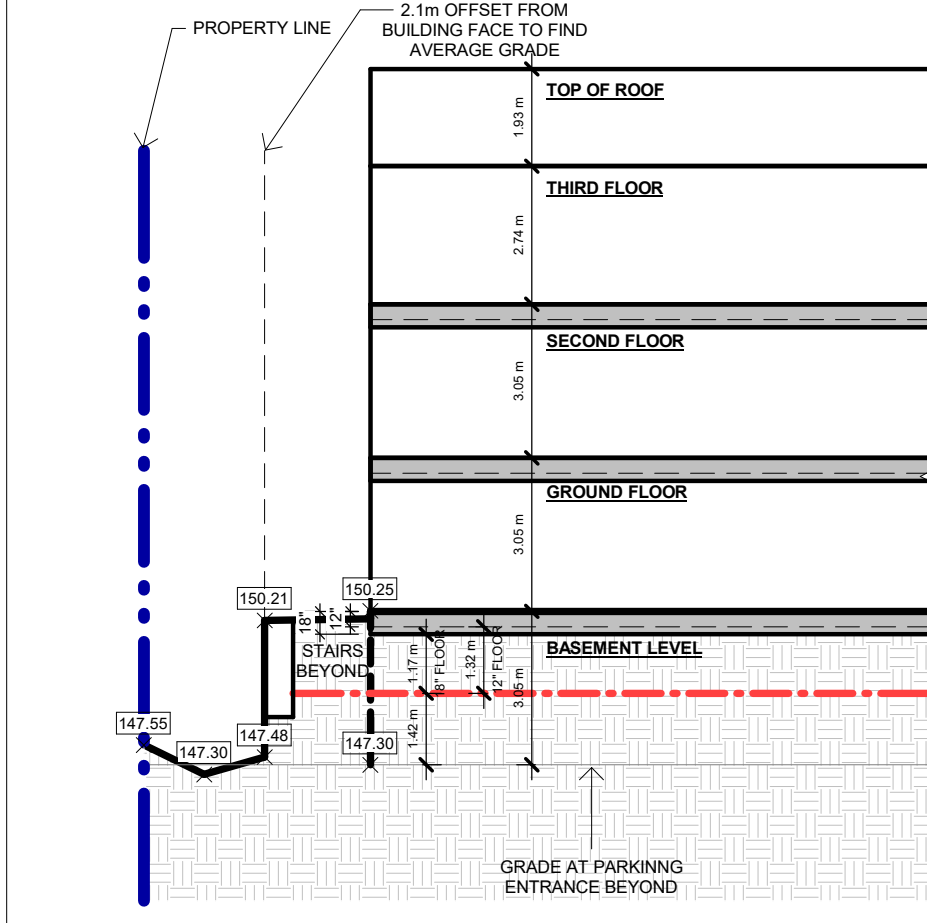
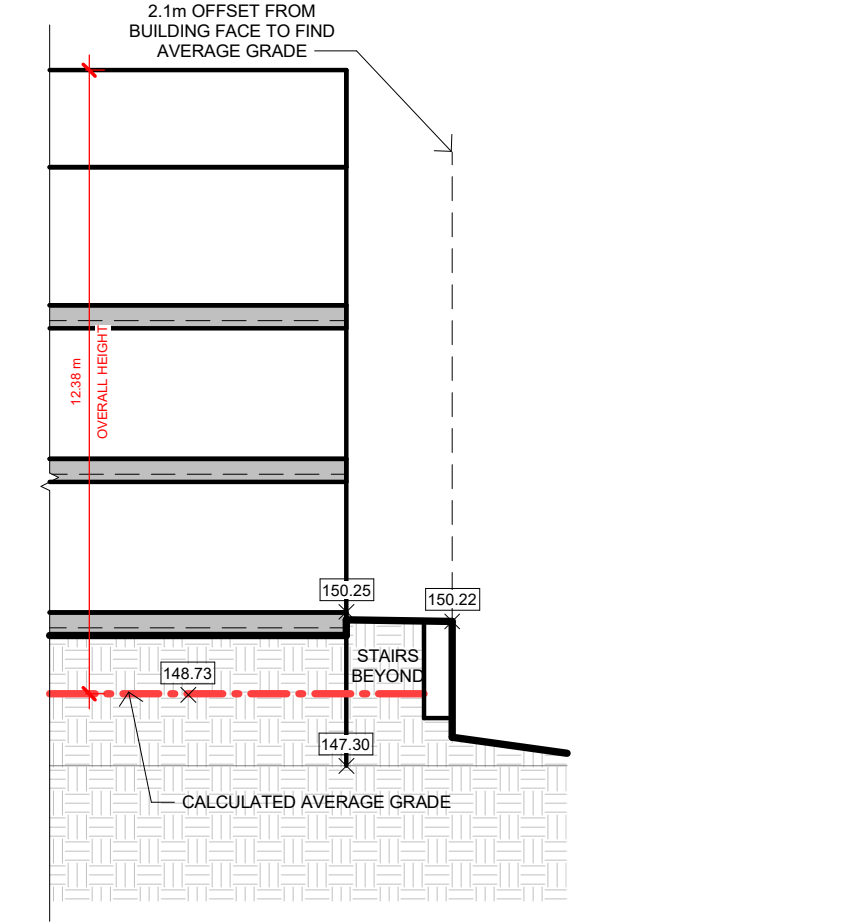
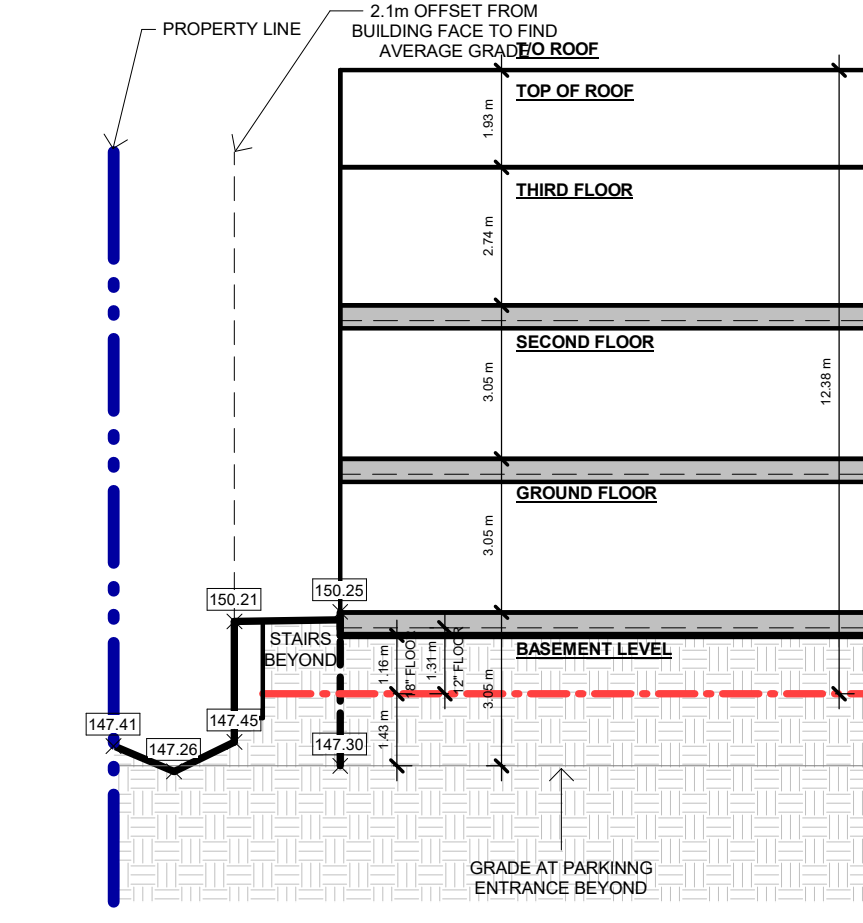
BLOCK 7



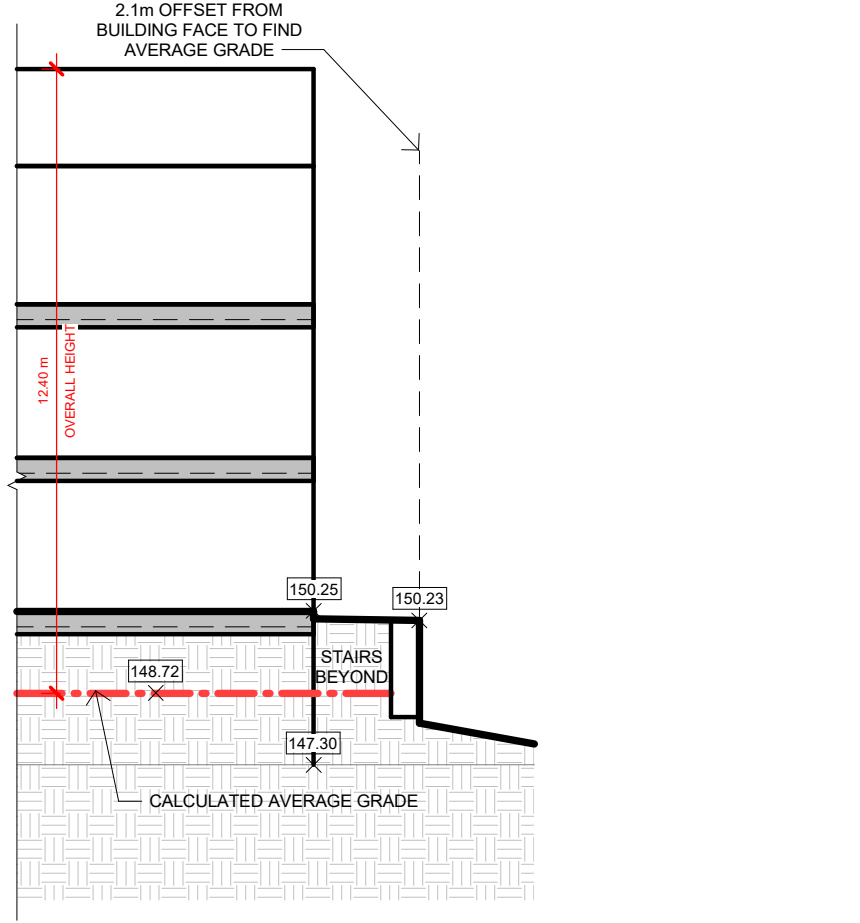
BLOCK 8



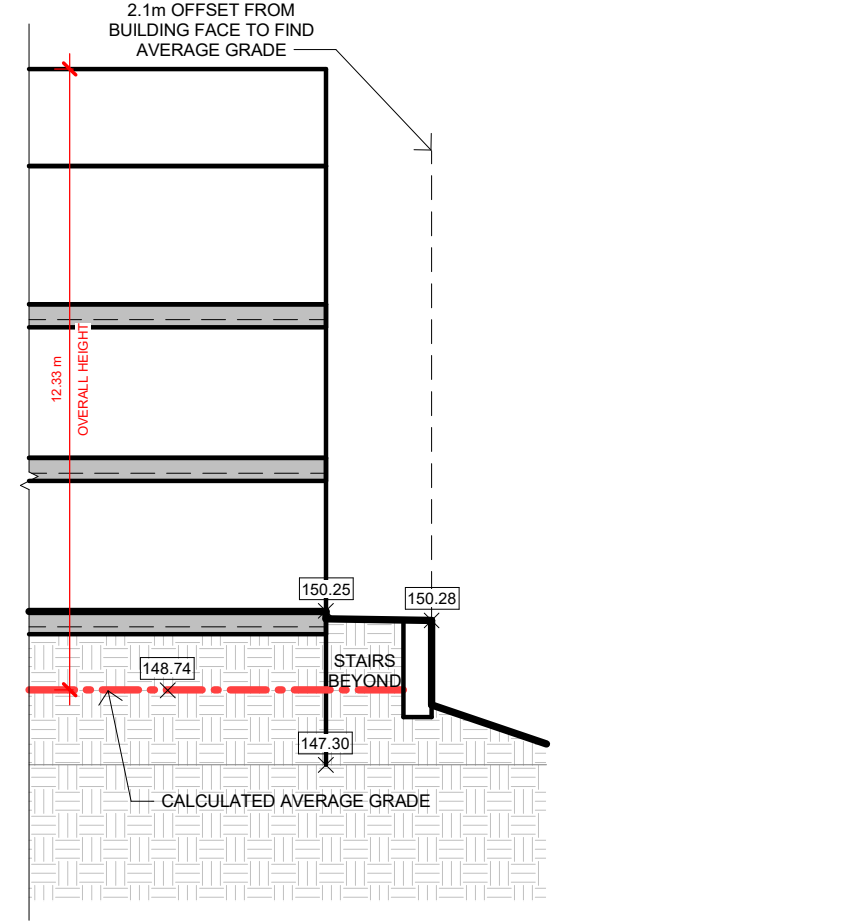
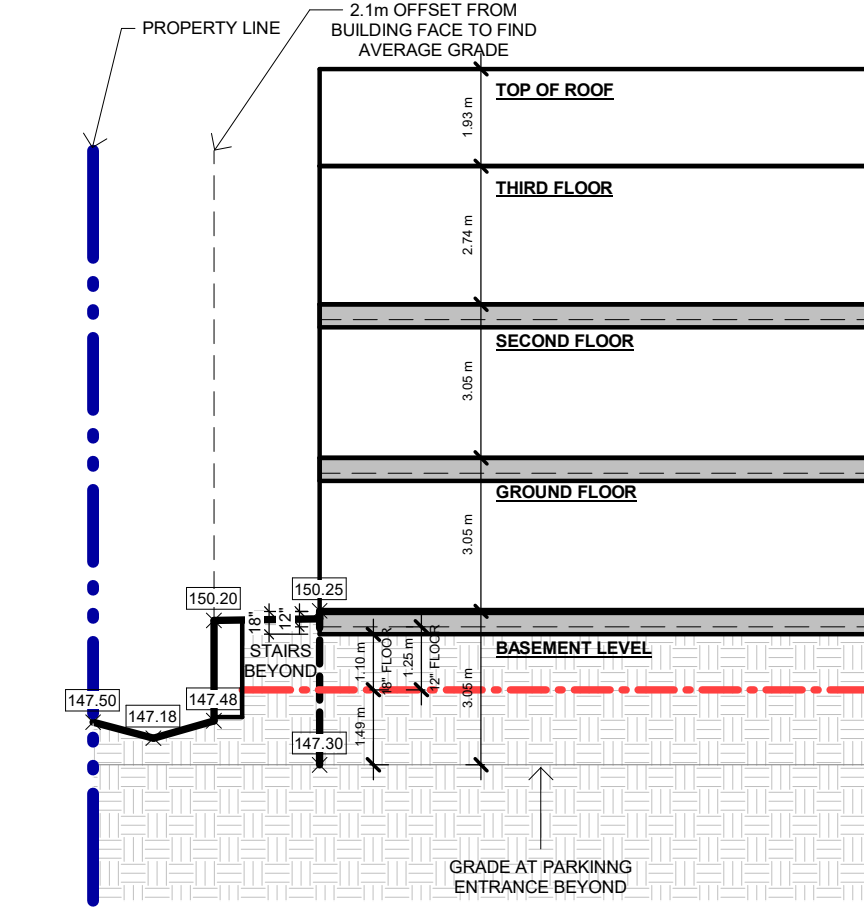
BLOCK 9



BLOCK 10



BLOCK 11



Chamberlain Architect
Services Limited
4871 Palladium Way (Unit 1)
Burlington, Ontario. L7M 0W9
CANADA
Phone: 905.631.7777
www.chamberlainIPD.com

NO.	ISSUED	DATE
8	CLIENT REVIEW	25-06-27
	OPAZBA SUBMISSION	25-06-13

DO NOT SCALE DRAWINGS. USE ONLY DRAWINGS MARKED "ISSUED FOR CONSTRUCTION". VERIFY CONFIGURATIONS AND DIMENSIONS ON SITE BEFORE BEGINNING WORK. NOTIFY ARCHITECT IMMEDIATELY OF ANY ERRORS, OMISSIONS OR DISCREPANCIES.
CHAMBERLAIN ARCHITECT SERVICES LIMITED AND CHAMBERLAIN CONSTRUCTION SERVICES LIMITED HAVE SIMILAR OWNERSHIP.
CHAMBERLAIN ARCHITECT SERVICES LIMITED HAS COPYRIGHT. CONSTRUCTING A SUBSTANTIALLY SIMILAR BUILDING WITHOUT PERMISSION MAY INFRINGE THE COPYRIGHT OWNERS RIGHTS. MAKING MINOR CHANGES TO PLANS DOES NOT NECESSARILY AVOID COPYRIGHT INFRINGEMENT. INNOCENT INFRINGEMENT IS NOT A DEFENSE TO COPYRIGHT INFRINGEMENT. ©
SEAL

THORNY BRAE

1765, 1775 THORNY BRAE
PLACE
MISSISSAUGA, ON

SHEET NAME

ESTABLISHED
GRADES -
BUILDING
SECTIONS

START DATE	APRIL 2024
DRAWN BY	MW
CHECKED BY	JMC
SCALE	1 : 150
PROJECT NO.	124015

DRAWING

A006b

D:\1 - Revit Local Files\124015 - Thorny Brae - Site - 2025-04-25_mw.docx\TBEG.rvt 2025-06-16 10:31:05 AM