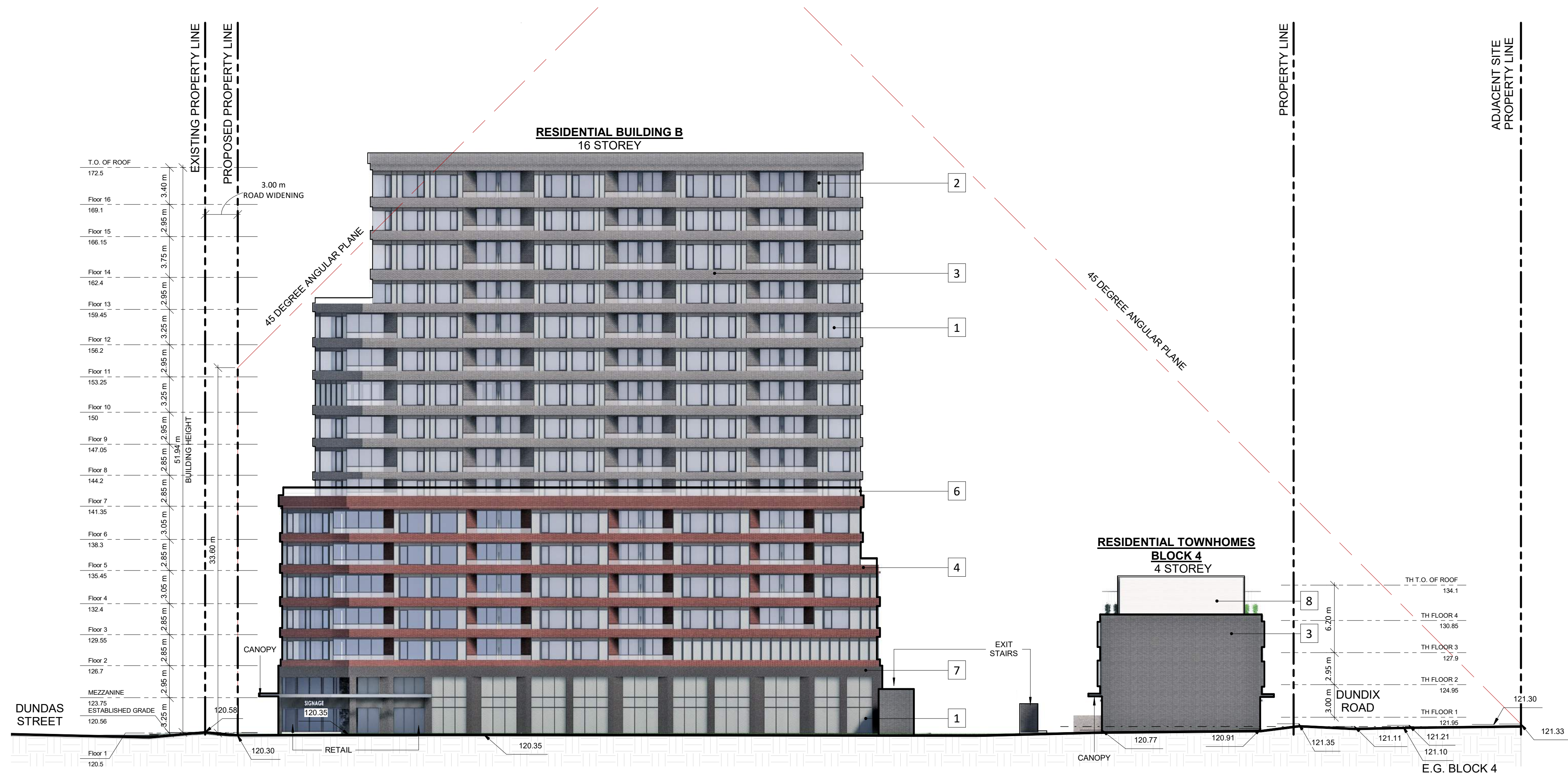


This drawing, as an instrument of service, is provided by and is the property of Turner Fleischer. The contractor must verify and accept responsibility for all dimensions and conditions on site and must notify Turner Fleischer of any variations from the supplied information. This drawing is not to be used for any other project. The architect is not responsible for the accuracy of survey, structural, mechanical, electrical, etc. information shown on this drawing. Refer to the appropriate consultant's drawings before proceeding with the work. Construction must conform to all applicable codes and requirements of all applicable governing jurisdictions. The contractor working from drawings not specifically marked for construction must assume full responsibility and bear costs for any corrections or damage resulting from his work.

### EXTERIOR FINISHES LEGEND:

1. CLEAR VISION GLASS
2. SPANDREL GLASS
3. PRECAST CONCRETE, BRICK OR METAL PANEL - DARK GREY
4. PRECAST CONCRETE, BRICK OR METAL PANEL - RED
5. PRECAST CONCRETE, BRICK OR METAL PANEL - LIGHT GREY
6. GLASS RAILING - CLEAR
7. METAL PANEL OR PRECAST CONCRETE - DARK
8. METAL PANEL OR PRECAST CONCRETE - LIGHT



4	05-27-2026	OPA & ZBA RESUBMISSION #2	MLE
3	23-07-2025	OPA & ZBA RESUBMISSION	MLE
2	08-26-2024	OPA & ZBA SUBMISSION	MLE
#	DATE	DESCRIPTION	BY

PROJECT  
**PROPOSED MIXED-USE DEVELOPMENT**  
1225 Dundas Street E, Mississauga, ON  
(OZ/OPA 22-20 W3)

DRAWING  
**NORTH ELEVATION**

PROJECT NO.	22.117P01
PROJECT DATE	2022-08-07
DRAWN BY	TKA
CHECKED BY	NMC
SCALE	As indicated



DRAWING NO.	A203	REV.	4
-------------	------	------	---