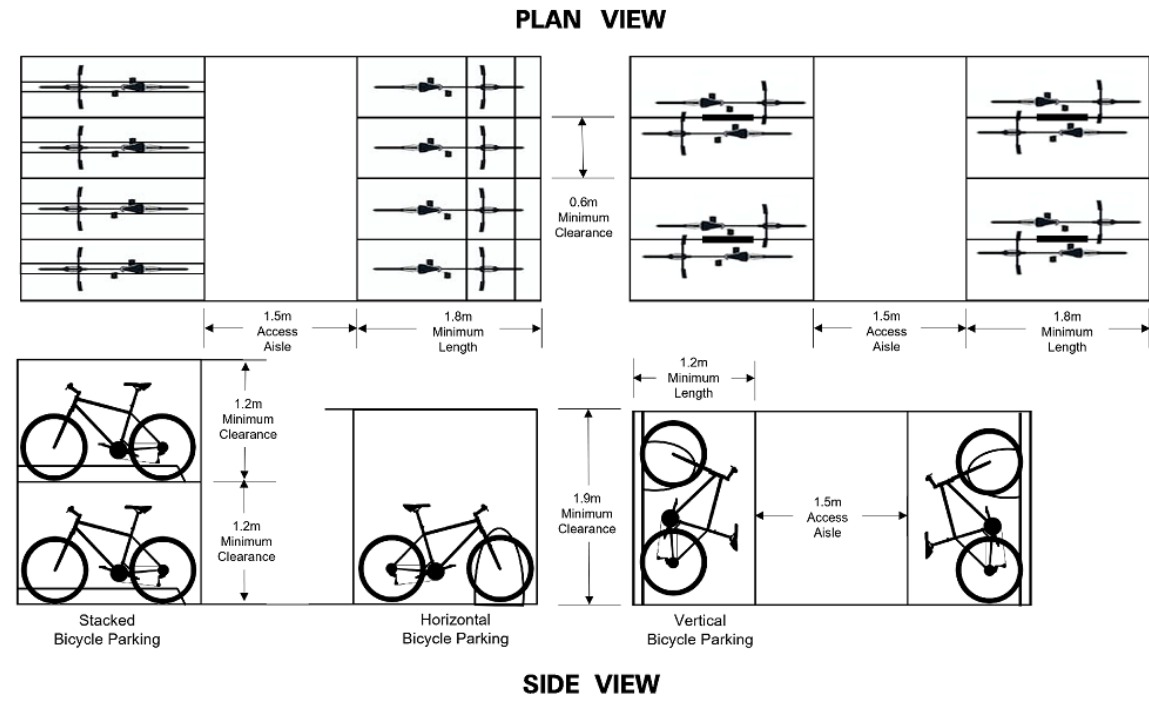
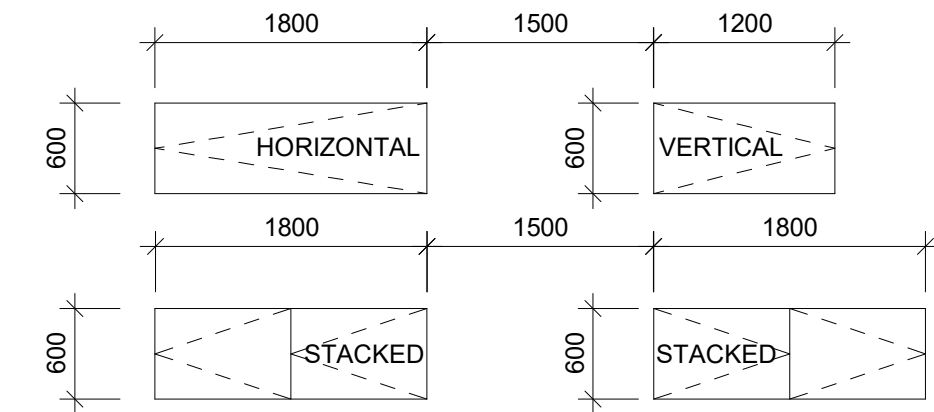


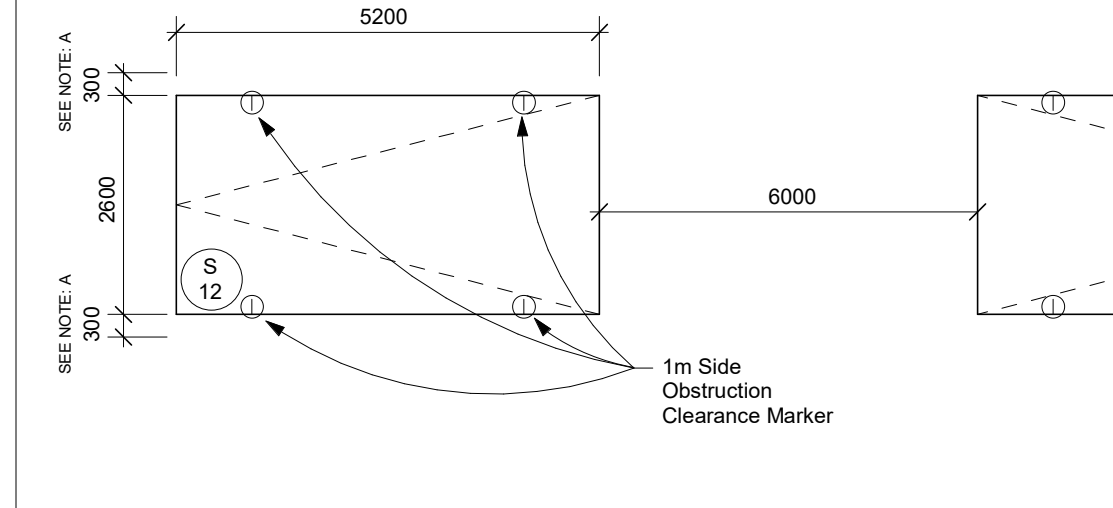
TYPICAL BICYCLE PARKING SPACE:

WALKWAY: MINIMUM 1500mm
VERTICAL PARKING SPACE: 1200mm (L) x 600mm (W)
HORIZONTAL PARKING SPACE: 1800mm (L) x 600mm (W)
STACKED PARKING SPACE: 1800mm (L) x 600mm (W)

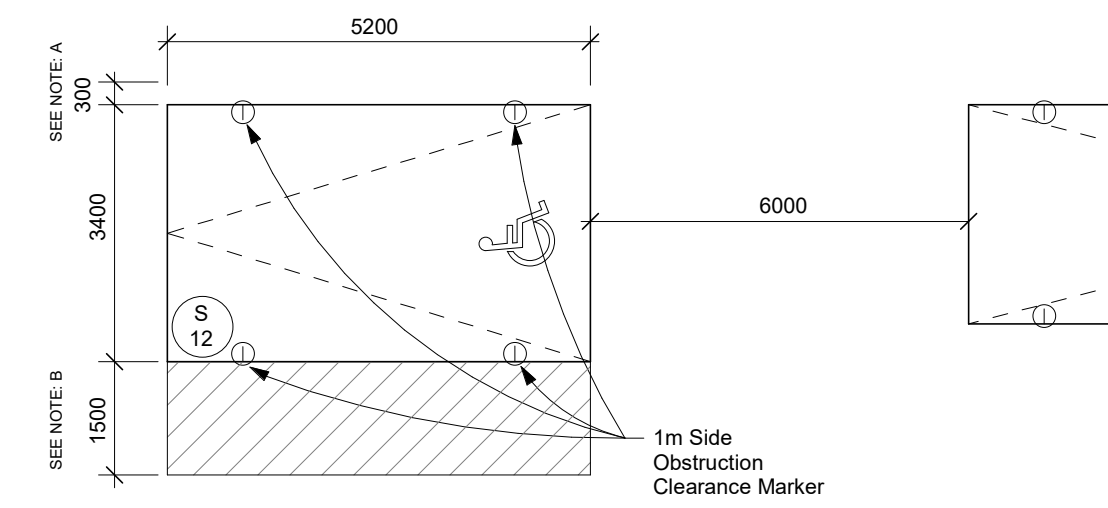


TYPICAL PARKING SPACE:

Drive Aisle @ 7m MIN.

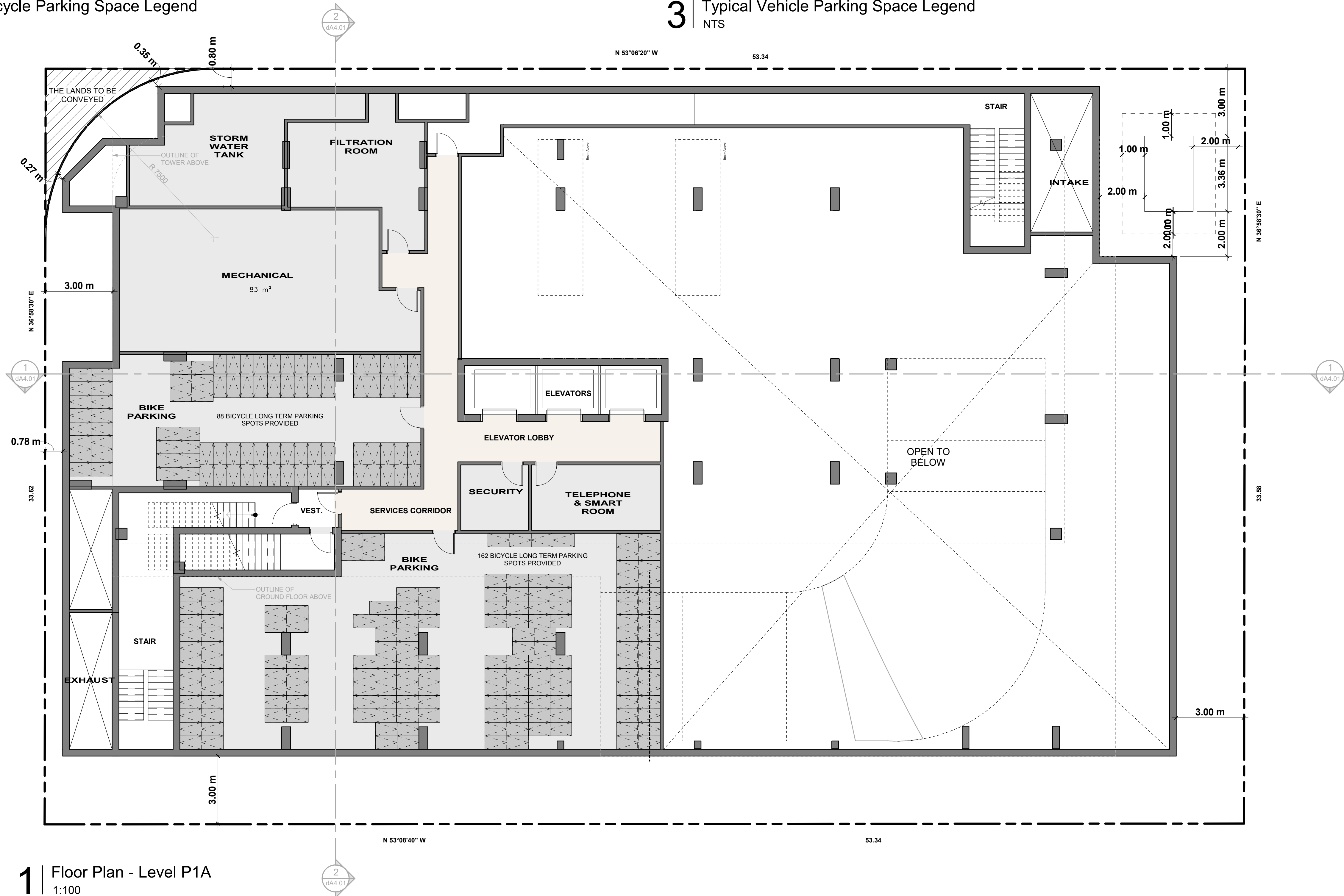


Accessible Parking Space



- NOTES:
- PROVIDE AN ADDITIONAL 300mm FOR PARKING SPACE WIDTH WHEN OBSTRUCTIONS OCCUR BETWEEN THE FRONT AND REAR 1000mm.
 - PROVIDE A 1500mm WALKWAY ON AT LEAST ONE SIDE OF AN ACCESSIBLE PARKING STALL. THIS WALKWAY MAY BE SHARED WITH ADJOINING ACCESSIBLE SPACE.

2 Typical Bicycle Parking Space Legend
NTS



1 Floor Plan - Level P1A
1:100

3 Typical Vehicle Parking Space Legend
NTS

ONTARIO ASSOCIATION
OF
ARCHITECTS
ROMAN PEVECEVICIUS
LICENCE
10185

KIRKOR
ARCHITECTS AND PLANNERS

20 De Boers Drive Suite 400
Toronto ON M3J 0H1

Revisions:		
No.:	Revision:	Date:
02	OPA/OZ Re-Submission	August 29, 2025
01	OPA/OZ Submission	May 23, 2025

No.:	Issued For:	Date:
02	OPA/OZ Re-Submission	August 29, 2025
01	OPA/OZ Submission	May 23, 2025

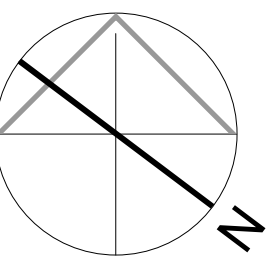
EDENSHAW

Client:
**EDENSHAW ELIZABETH
DEVELOPMENTS LTD.**

23 Elizabeth St. N
Proposed Residential Development

Drawing Title:
Floor Plan Level P1A

Scale:
1 : 100
Drawn by:
B.B., S.D.
Checked by:
R.P.
Project No.:
24-113
Date:
August 29, 2025
Drawing No.:



dA2.05