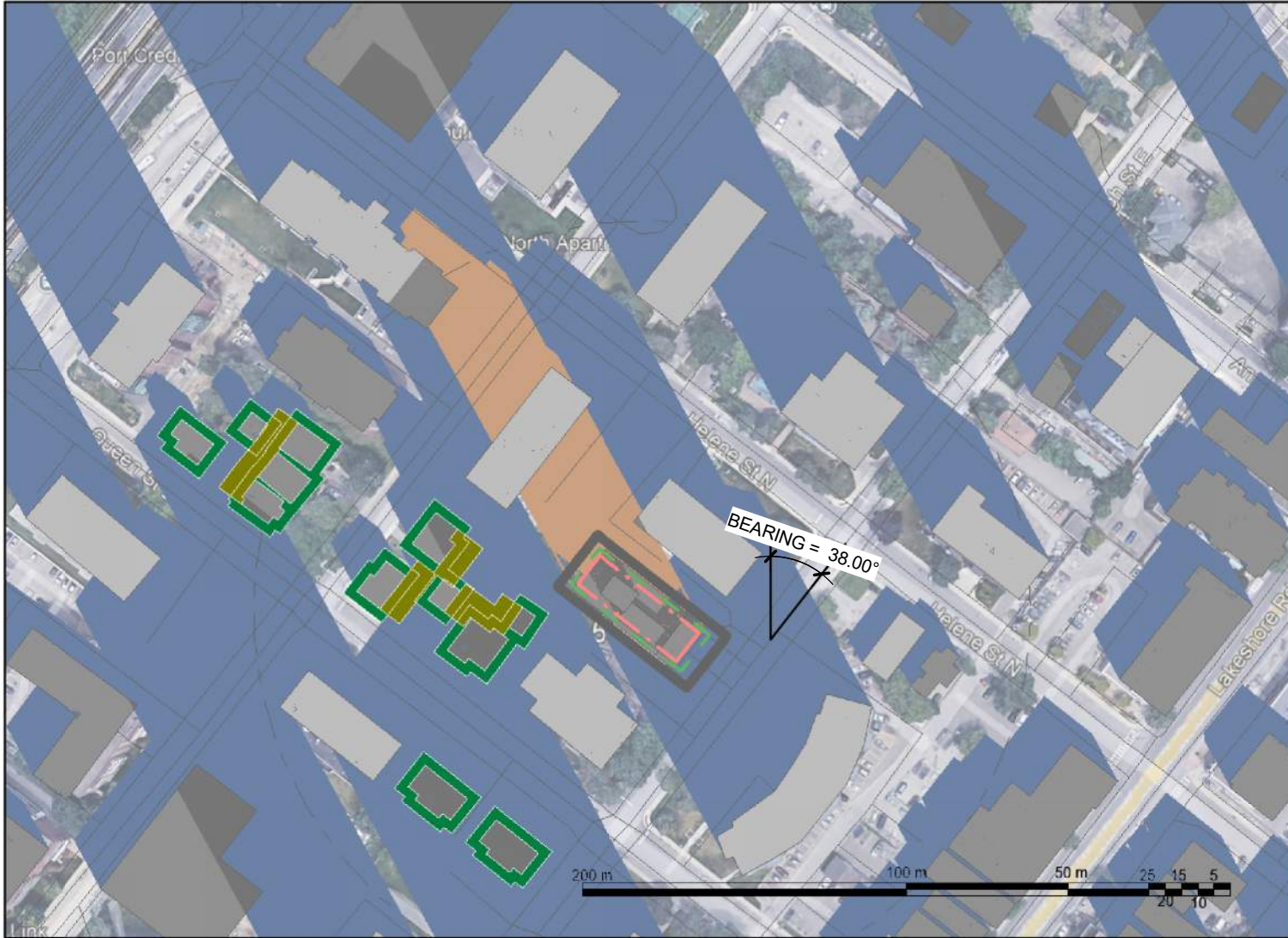
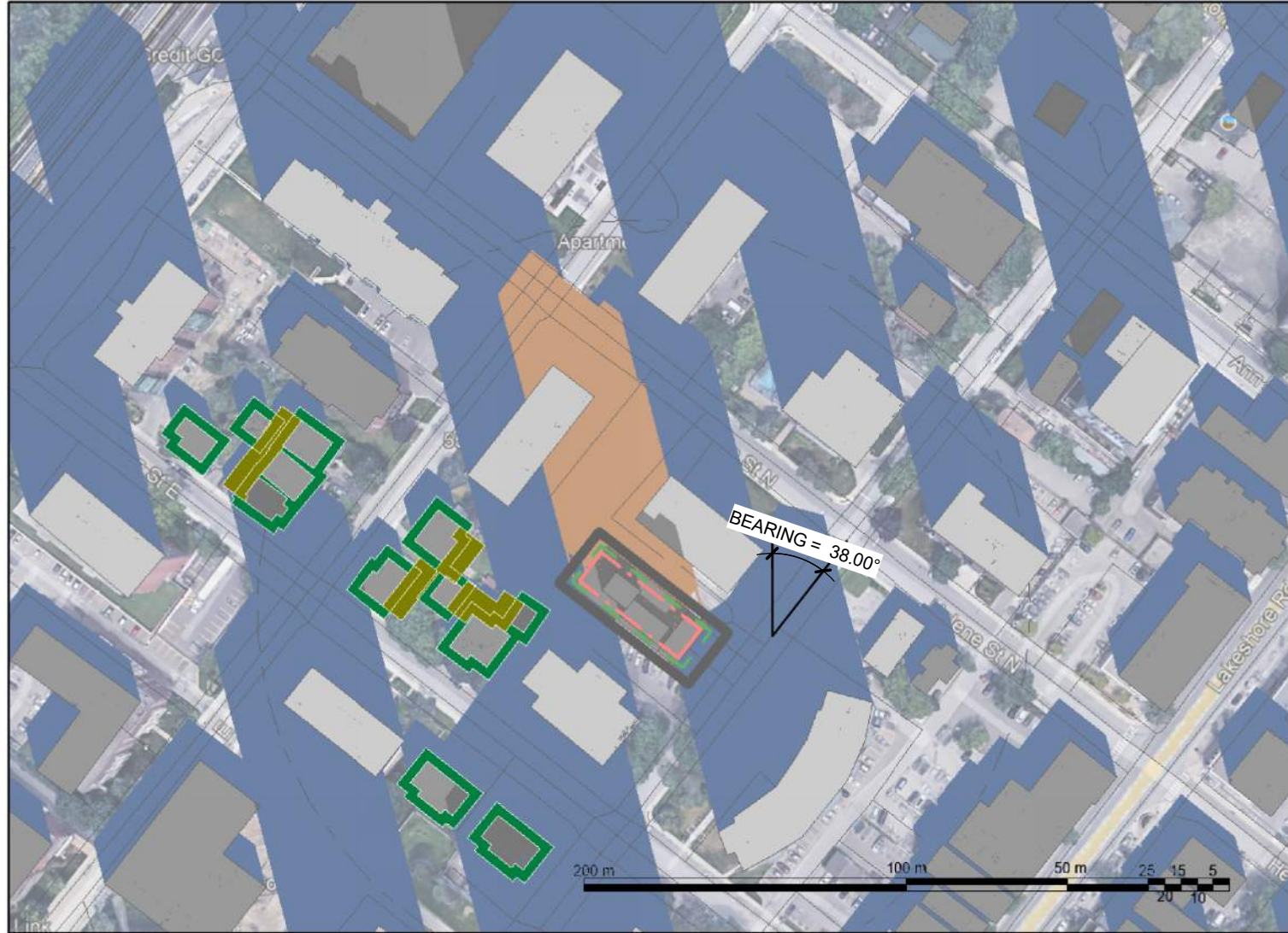


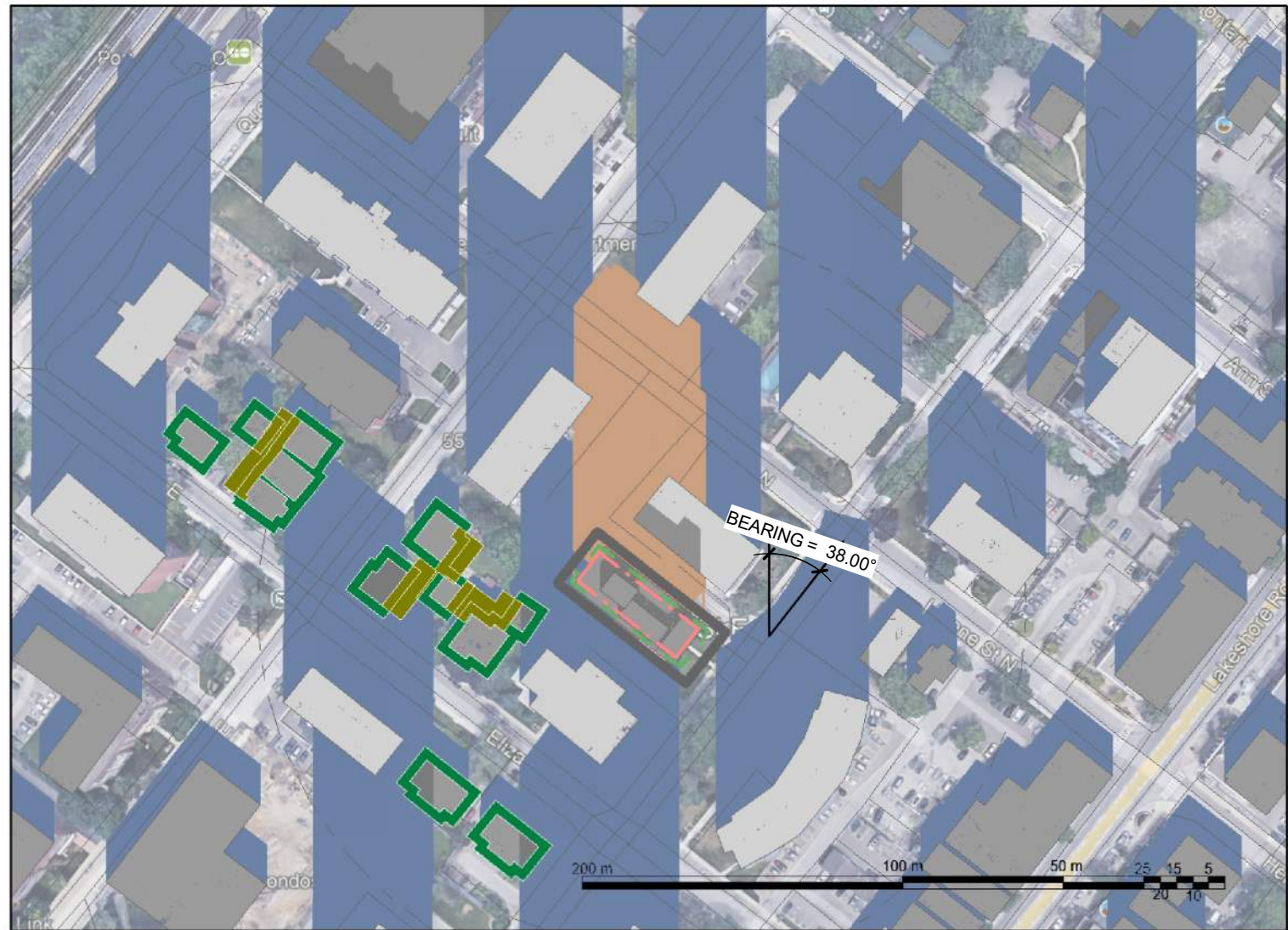
001 - DEC 21 - 09_19 AM



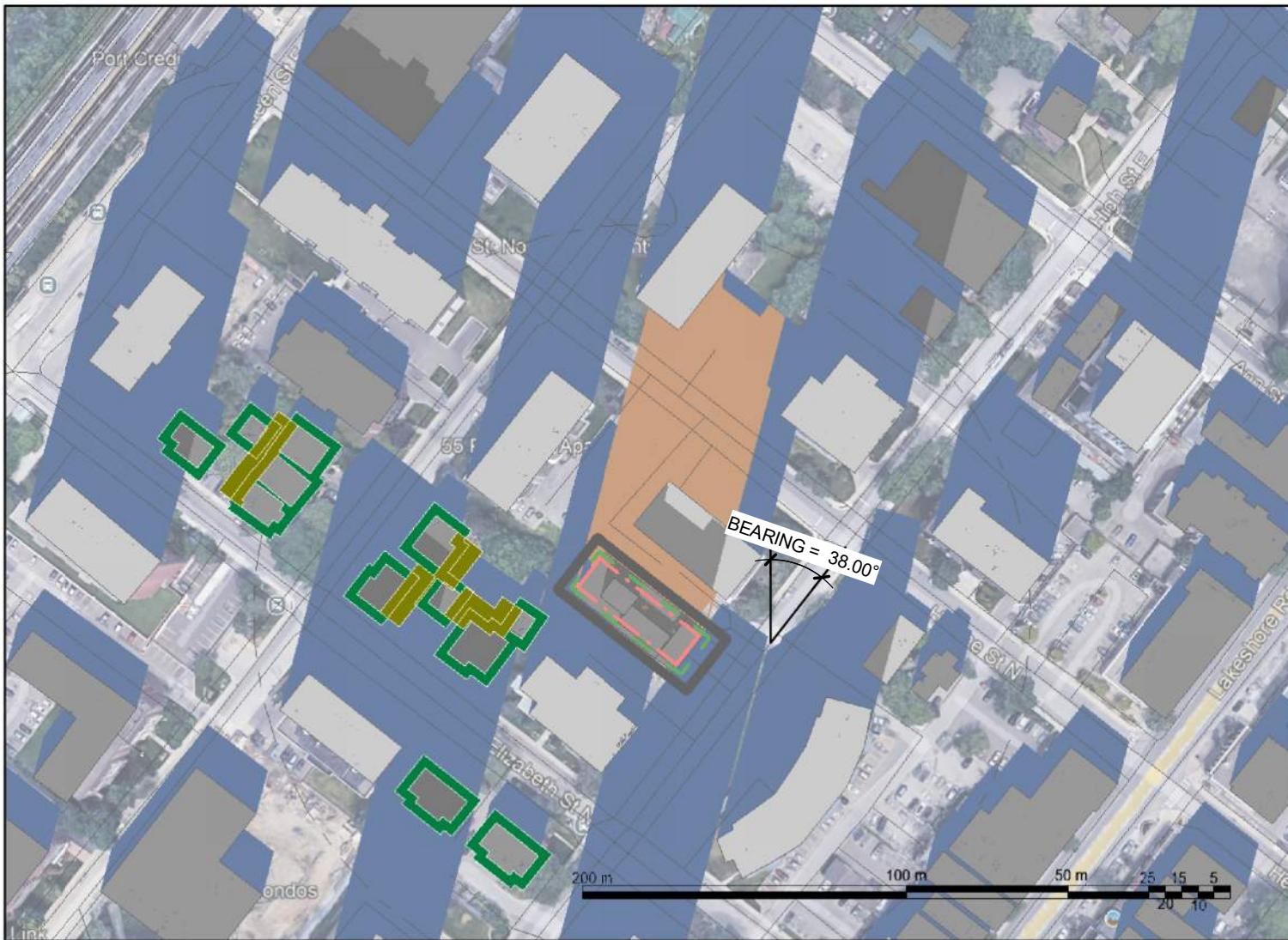
002 - DEC 21 - 10_17 AM



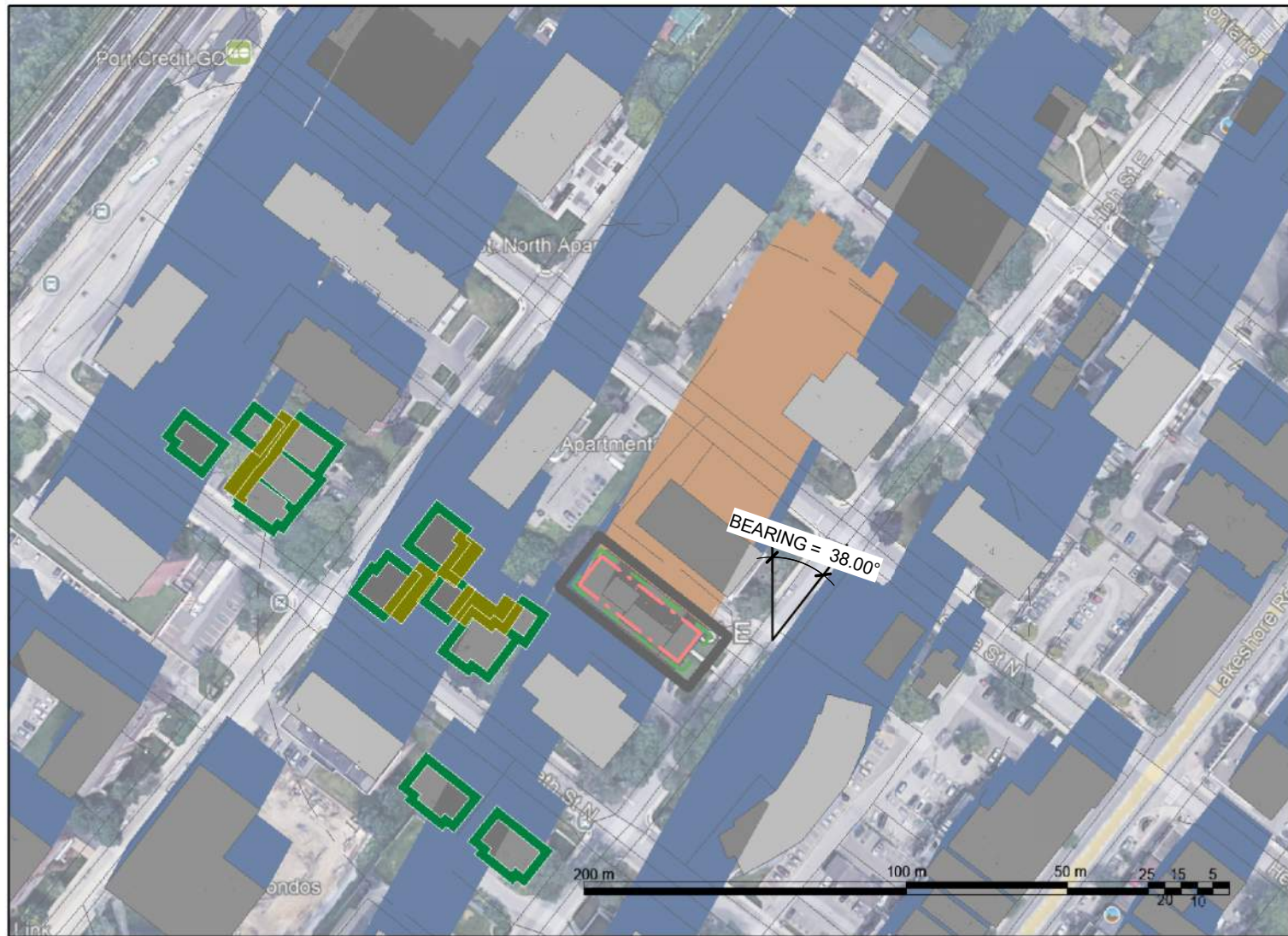
003 - DEC 21 - 11_17 AM



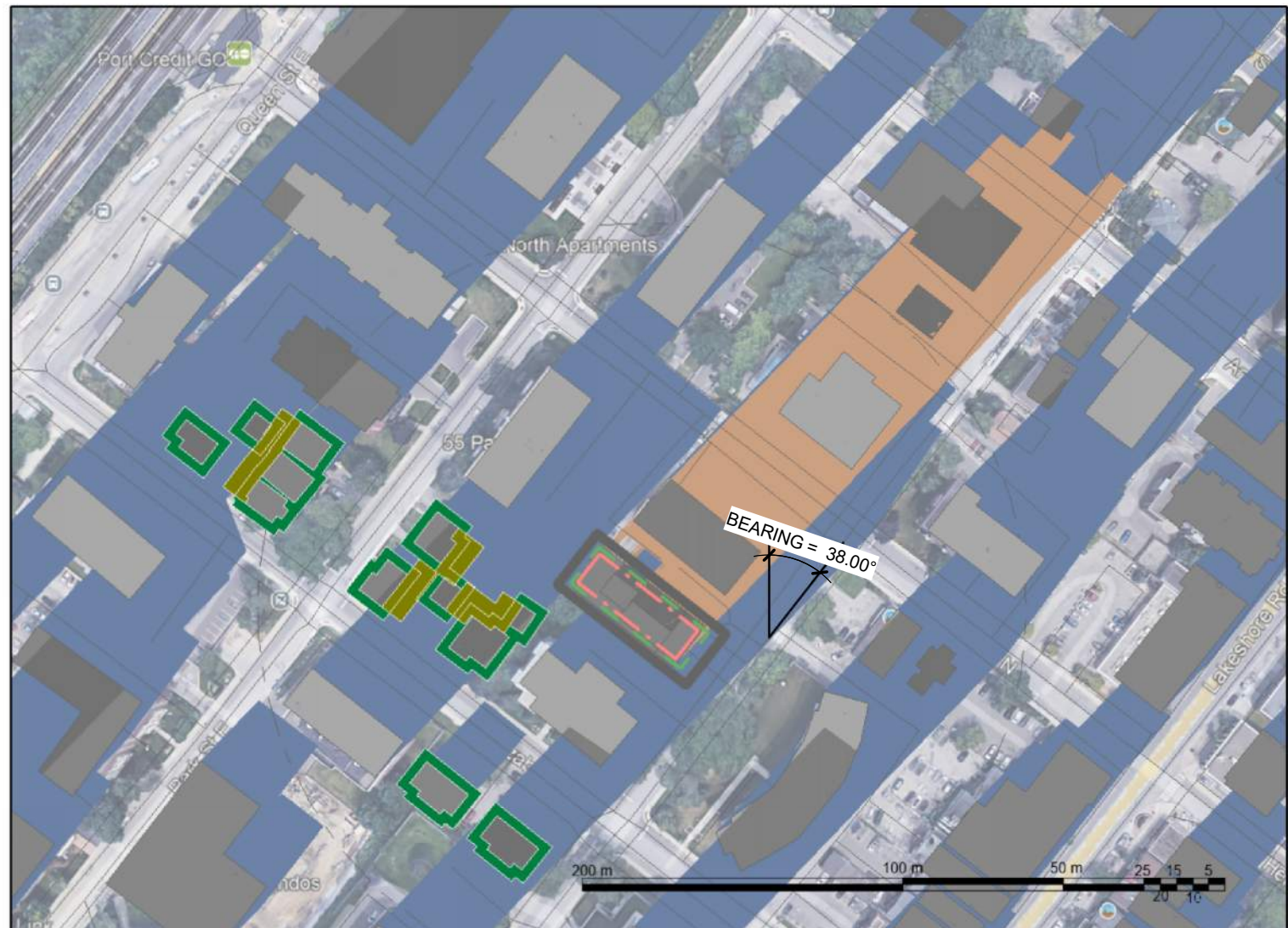
004 - DEC 21 - 12_17 PM



005 - DEC 21 - 13_17 PM



006 - DEC 21 - 14_17 PM



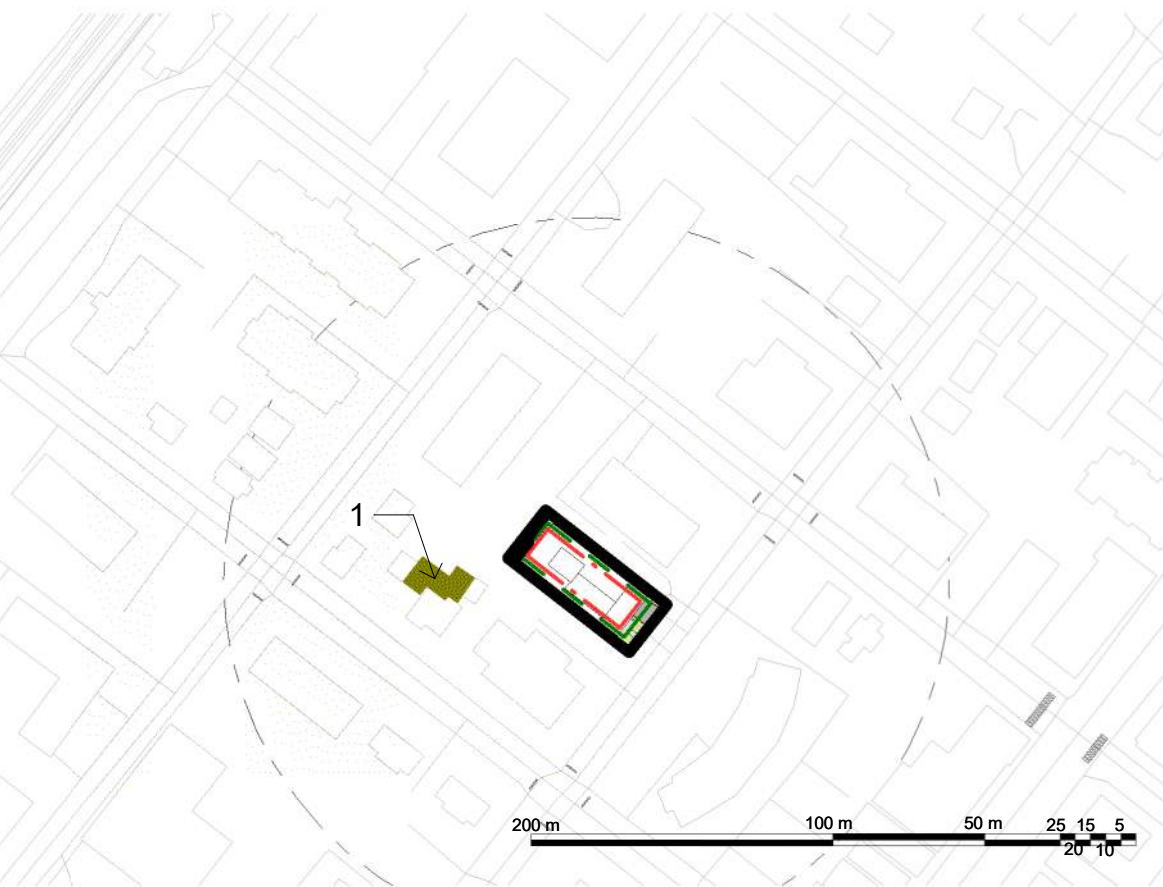
007 - DEC 21 - 15_15 PM

SITE LATITUDE: 43.554431

ASTRONOMIC NORTH:
DETERMINED FROM SURVEY

ORIGIN/SOURCE OF BASE PLAN:
SURVEY

LOCATIONS/USES OF AREAS NOT MEETING THE
SHADOW IMPACT CRITERIA:



1- RESIDENTIAL PRIVATE OUTDOOR AMENITY
SPACES 7.5M BUFFER: SHADOW PERSISTS FOR
MORE THAN 2 CONSECUTIVE HOURLY TEST TIMES
(ON SEPT 21 AND JUNE 21).

QUANTIFICATION AND ASSESSMENT OF THE
IMPACT IN THE AREAS THAT DO NOT MEET THE
SHADOW IMPACT CRITERIA

1- AREA ALREADY SHADED BY EXISTING
BUILDINGS

SUMMARY:

- THE SHADOW STUDY FOR 50 HIGH STREET E
DEMONSTRATES FULL COMPLIANCE WITH THE
CITY OF MISSISSAUGA'S SHADOW IMPACT
CRITERIA. ADJACENT PRIVATE AMENITY SPACES,
COMMUNAL AREAS, PUBLIC SIDEWALKS,
PARKS, AND LOW-RISE RESIDENTIAL FAÇADES
ALL MEET REQUIRED SUNLIGHT THRESHOLDS
ON JUNE 21, SEPTEMBER 21, AND DECEMBER 21.
- TO MINIMIZE SHADOW IMPACTS, THE BUILDING
DESIGN INCORPORATES UPPER-STOREY STEP-
BACKS, REDUCED HEIGHTS NEAR SENSITIVE
AREAS, AND OPTIMIZED MASSING TO PRESERVE
SUN ACCESS FOR KEY OUTDOOR SPACES.

COLOR LEGEND

- PROPOSED BUILDING SHADOW
- EXISTING BUILDING SHADOW
- LOW RISE BUILDING 3M BUFFER
- RESIDENTIAL PRIVATE OUTDOOR
AMENITY SPACES 7.5M BUFFER