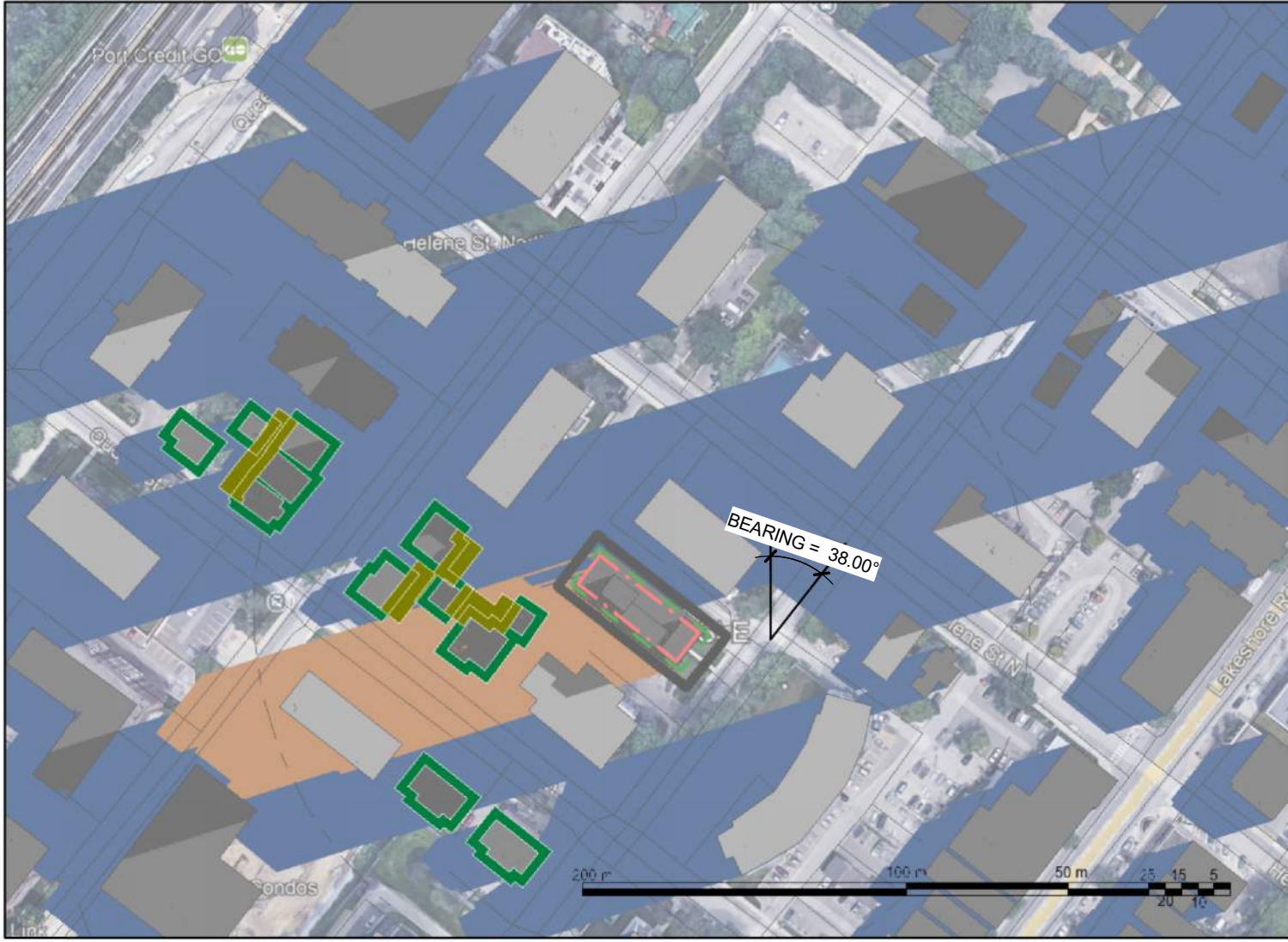
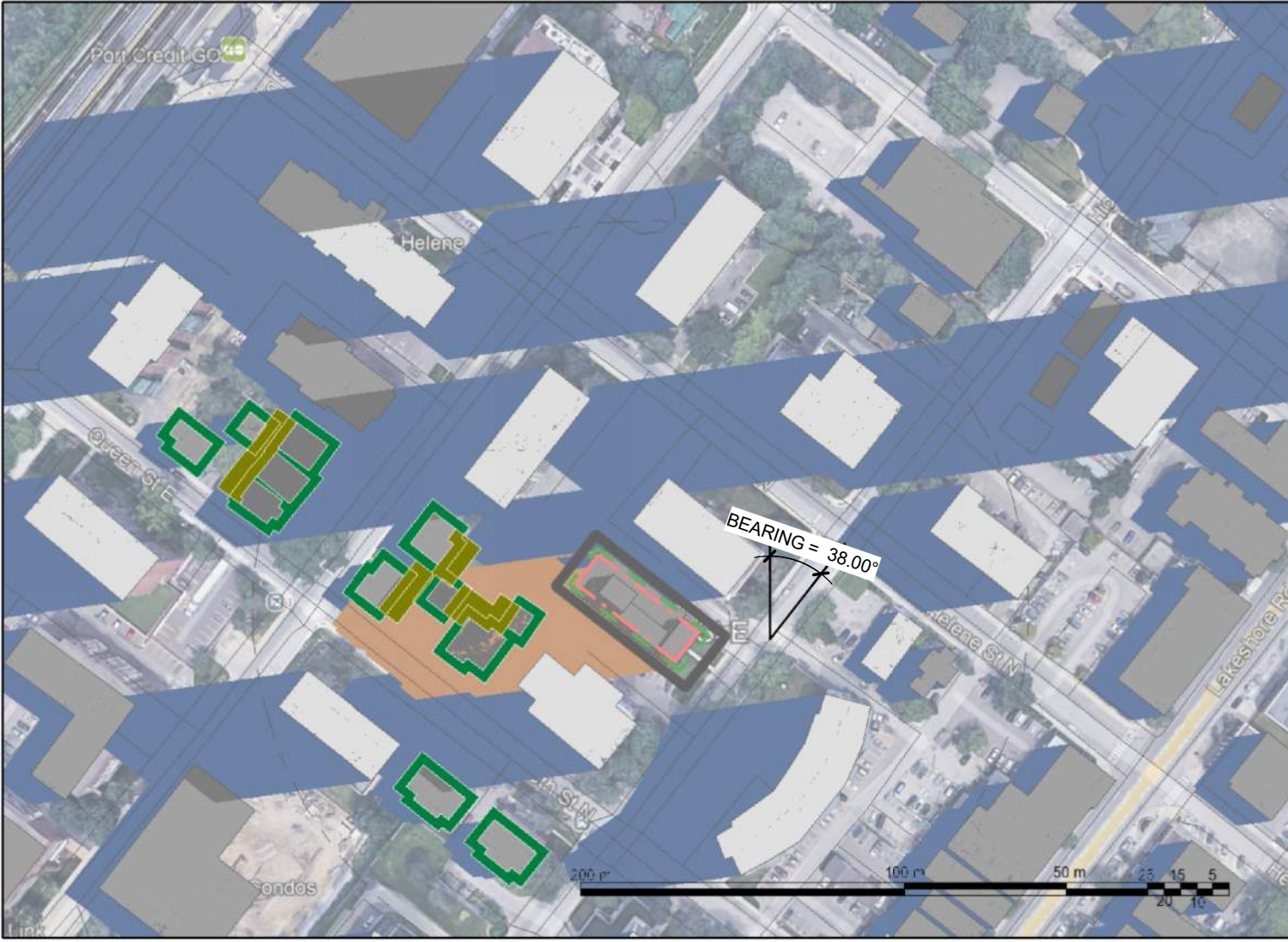


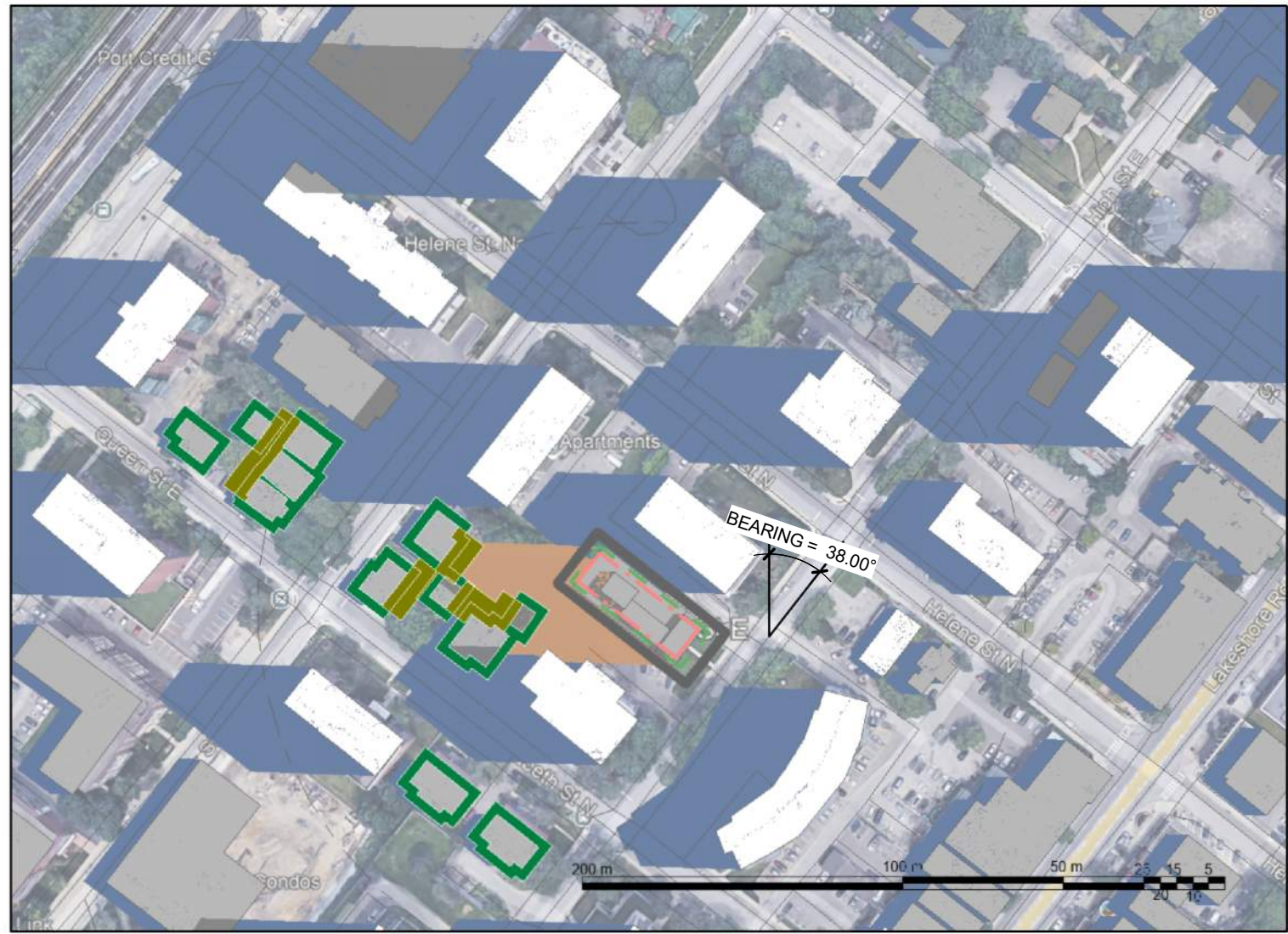
001 - JUN 21 - 07\_07 AM



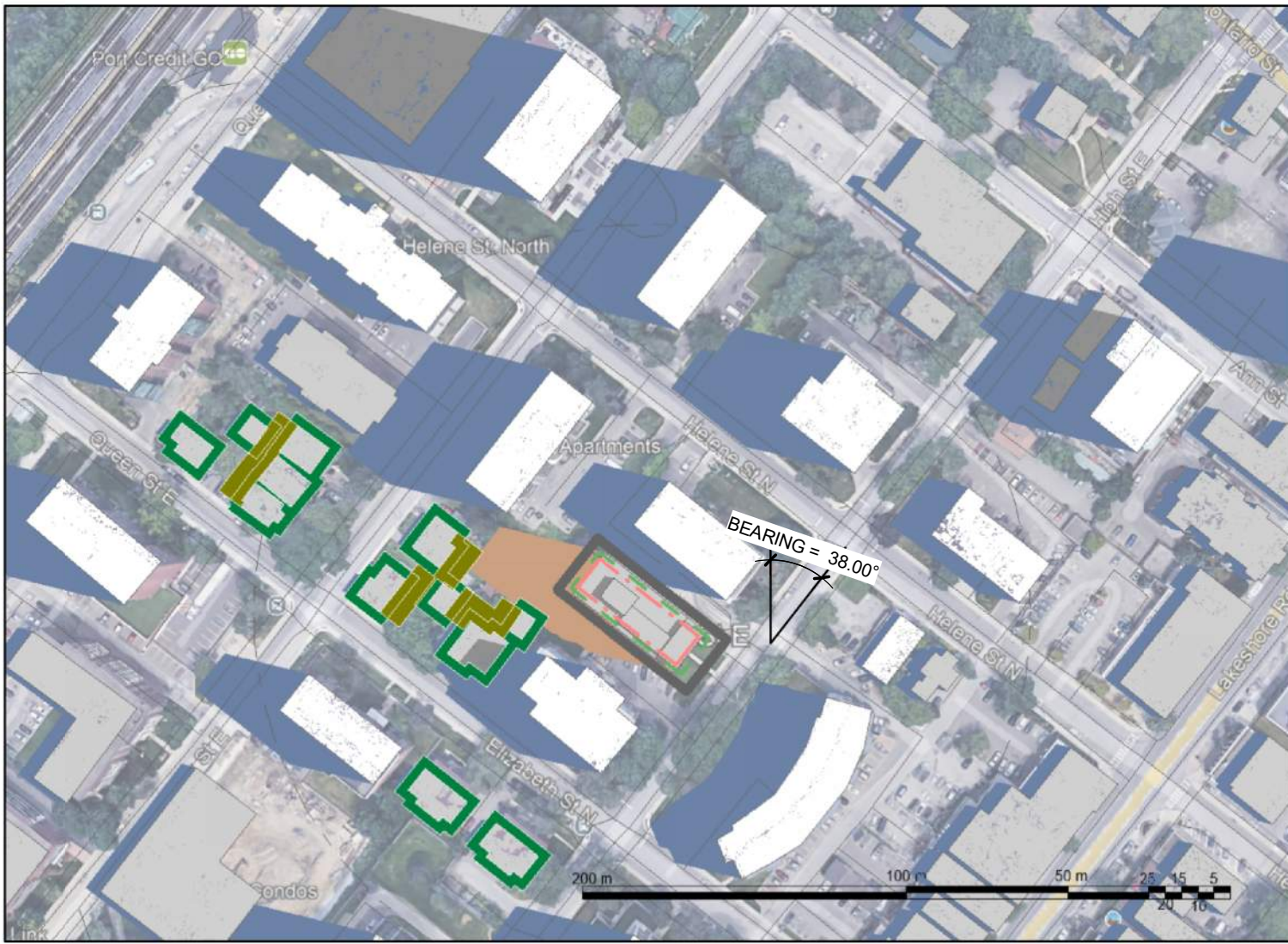
002 - JUN 21 - 07\_20 AM



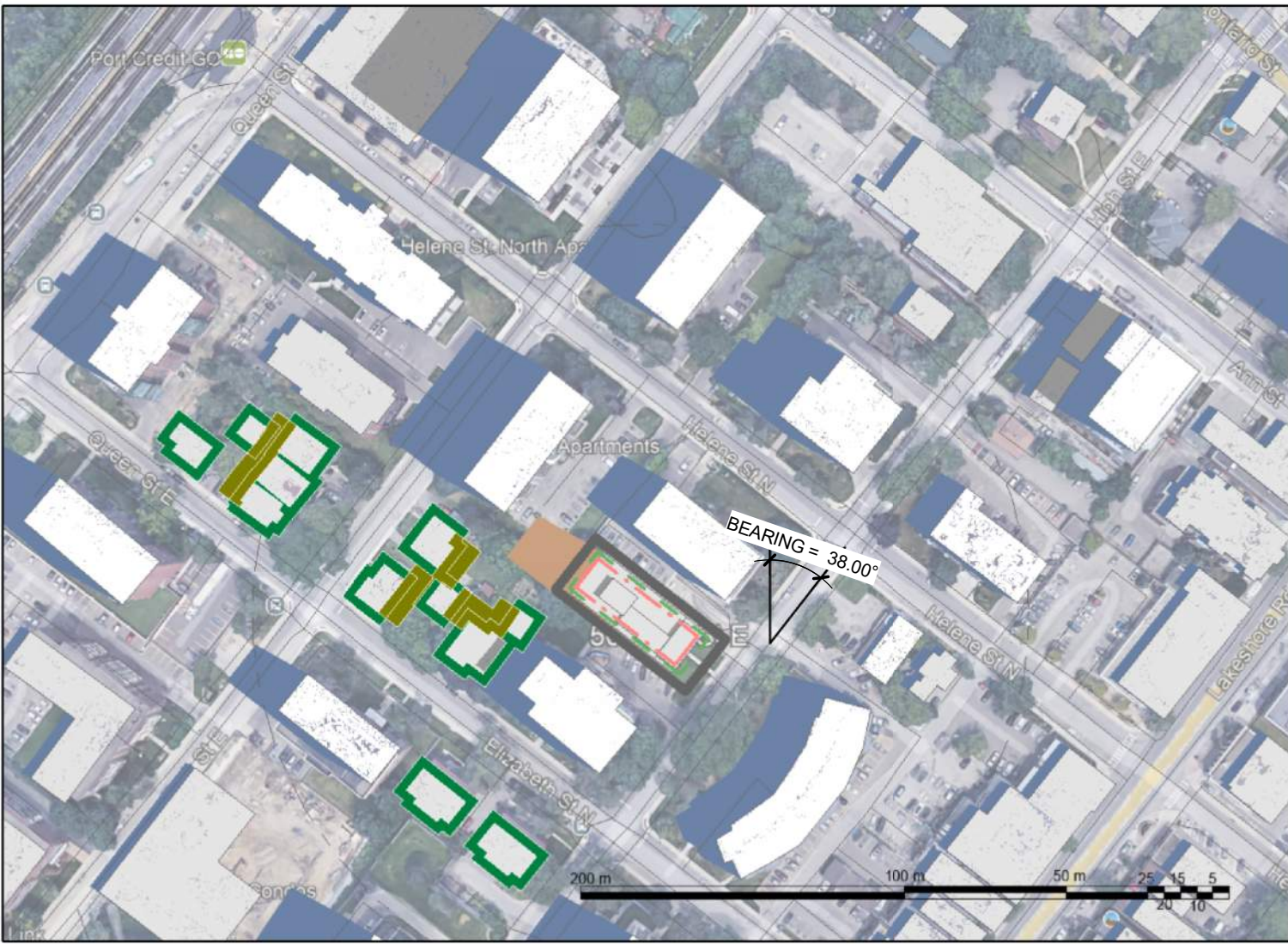
003 - JUN 21 - 08\_20 AM



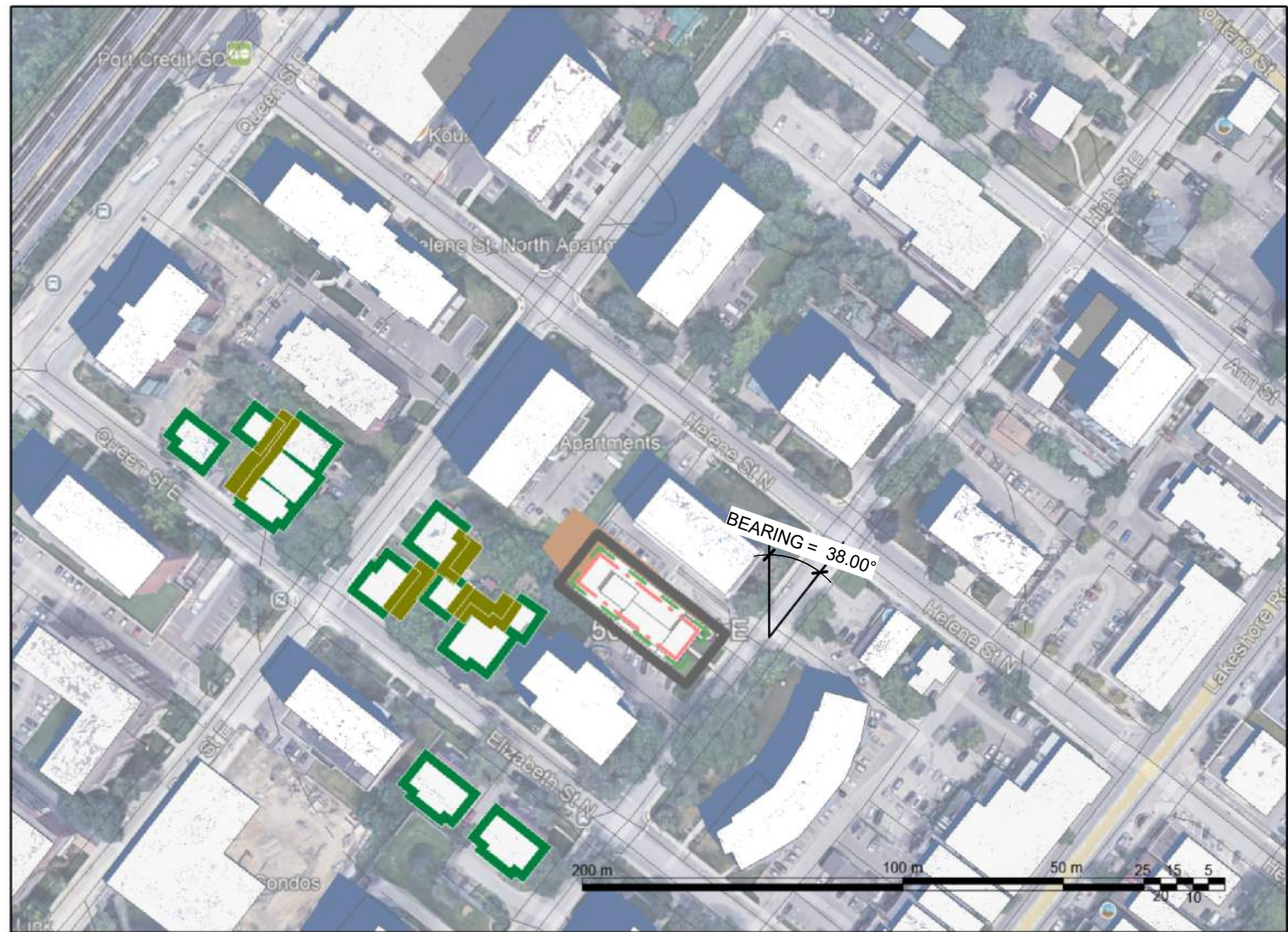
004 - JUN 21 - 09\_20 AM



005 - JUN 21 - 10\_20 AM



006 - JUN 21 - 11\_20 AM



007 - JUN 21 - 12\_20 PM



008 - JUN 21 - 13\_20 PM



009 - JUN 21 - 14\_20 PM

SITE LATITUDE: 43.554431

ASTRONOMIC NORTH:  
DETERMINED FROM SURVEY

ORIGIN/SOURCE OF BASE PLAN:  
SURVEY

LOCATIONS/USES OF AREAS NOT MEETING THE  
SHADOW IMPACT CRITERIA:



1- RESIDENTIAL PRIVATE OUTDOOR AMENITY SPACES 7.5M BUFFER: SHADOW PERSISTS FOR MORE THAN 2 CONSECUTIVE HOURLY TEST TIMES (ON SEPT 21 AND JUNE 21).

QUANTIFICATION AND ASSESSMENT OF THE  
IMPACT IN THE AREAS THAT DO NOT MEET THE  
SHADOW IMPACT CRITERIA

1- AREA ALREADY SHADED BY EXISTING BUILDINGS

SUMMARY:

- THE SHADOW STUDY FOR 50 HIGH STREET E DEMONSTRATES FULL COMPLIANCE WITH THE CITY OF MISSISSAUGA'S SHADOW IMPACT CRITERIA. ADJACENT PRIVATE AMENITY SPACES, COMMUNAL AREAS, PUBLIC SIDEWALKS, PARKS, AND LOW-RISE RESIDENTIAL FAÇADES ALL MEET REQUIRED SUNLIGHT THRESHOLDS ON JUNE 21, SEPTEMBER 21, AND DECEMBER 21.
- TO MINIMIZE SHADOW IMPACTS, THE BUILDING DESIGN INCORPORATES UPPER-STOREY STEP-BACKS, REDUCED HEIGHTS NEAR SENSITIVE AREAS, AND OPTIMIZED MASSING TO PRESERVE SUN ACCESS FOR KEY OUTDOOR SPACES.

COLOR LEGEND

- PROPOSED BUILDING SHADOW
- EXISTING BUILDING SHADOW
- LOW RISE BUILDING 3M BUFFER
- RESIDENTIAL PRIVATE OUTDOOR AMENITY SPACES 7.5M BUFFER



Chamberlain Architect  
Services Limited

4871 Palladium Way (Unit 1)  
Burlington, Ontario. L7M 0W9  
CANADA

Phone: 905.631.7777

www.chamberlainPD.com

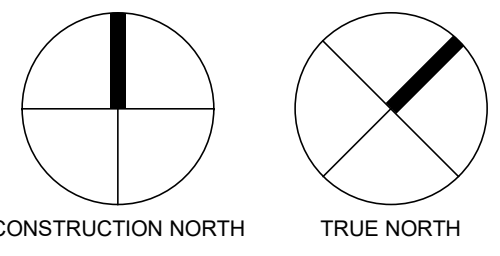
NO. ISSUED DATE

DO NOT SCALE DRAWINGS. USE ONLY DRAWINGS MARKED "ISSUED FOR CONSTRUCTION". VERIFY CONFIGURATIONS AND DIMENSIONS ON SITE BEFORE BEGINNING WORK. NOTIFY ARCHITECT IMMEDIATELY OF ANY ERRORS, OMISSIONS OR DISCREPANCIES.

CHAMBERLAIN ARCHITECT SERVICES LIMITED AND CHAMBERLAIN CONSTRUCTION SERVICES LIMITED HAVE SIMILAR OWNERSHIP.

CHAMBERLAIN ARCHITECT SERVICES LIMITED HAS COPYRIGHT. CONSTRUCTING A SUBSTANTIALLY SIMILAR BUILDING WITHOUT PERMISSION MAY INFRINGE THE COPYRIGHT OWNERS RIGHTS. MAKING MINOR CHANGES TO PLANS DOES NOT NECESSARILY AVOID COPYRIGHT INFRINGEMENT. INDICENT INFRINGEMENT IS NOT A DEFENSE TO COPYRIGHT INFRINGEMENT. ©

SEAL



50 High Street  
Affordable

50 High Street E,  
Mississauga

SHEET NAME

SHADOW STUDY -  
JUN 21

START DATE April 2025

DRAWN BY MK

CHECKED BY SM

SCALE As indicated

PROJECT NO. 125021

DRAWING

A.003