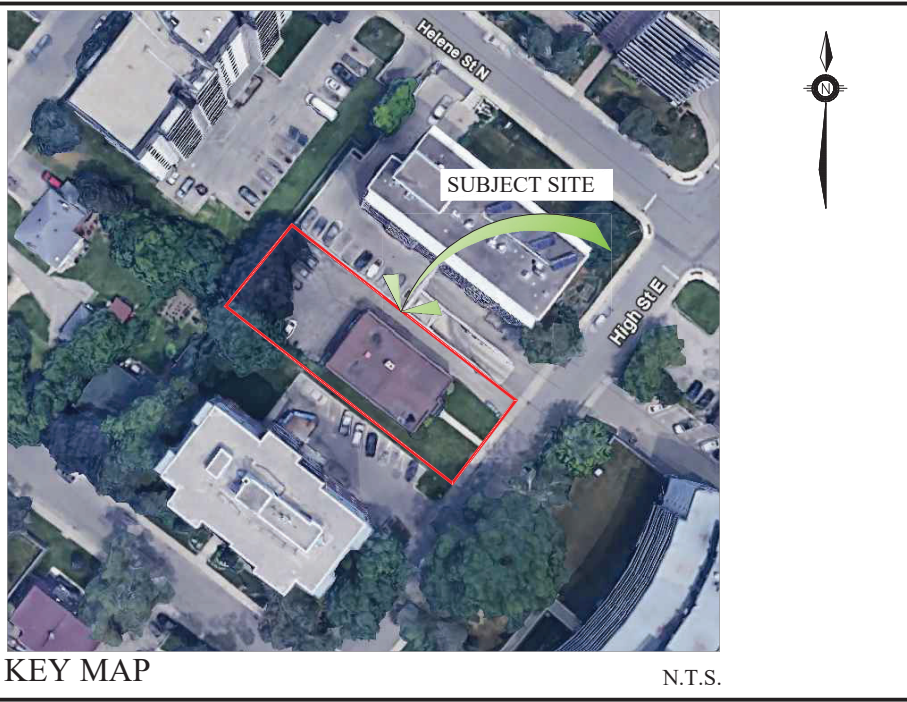
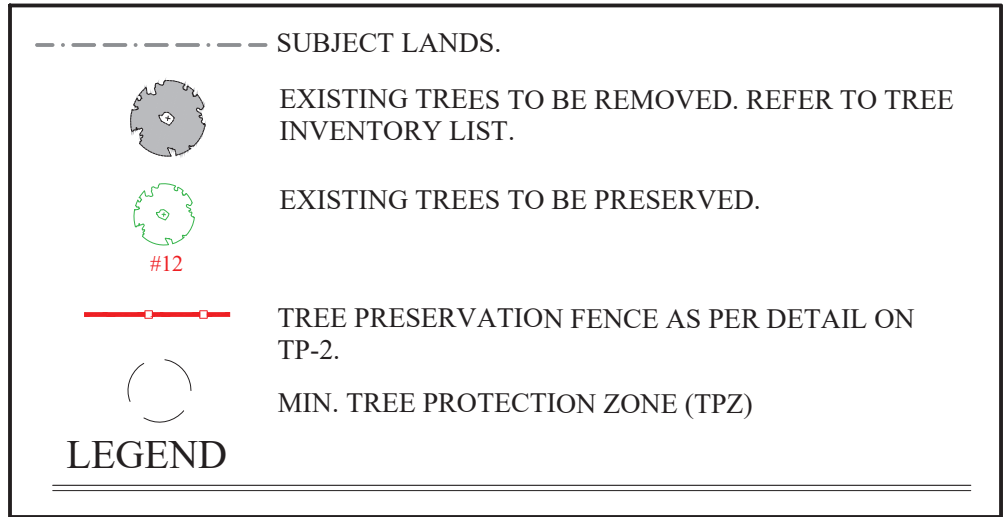


TREE INVENTORY

50 High Street Mississauga - May 2025											
Tree #	Botanical Name	Common name	DBH	Height	Crown Ø (m)	Maturity	Health conditions	Minimum TPZ	Ownership	Proposed Action	Comments
			cm	m							
1	<i>Acer platanoides</i> 'Crimson King'	Norway Maple 'Crimson King'	32 + 28	20	12	Mature	Fair	2.4m	Neighbour	Preserve	Forked at 0.3m, dieback on top
2	<i>Acer platanoides</i> 'Crimson King'	Norway Maple 'Crimson King'	33	20	14	Mature	Good	2.4m	Neighbour	Preserve	Good
3	<i>Acer platanoides</i> 'Crimson King'	Norway Maple 'Crimson King'	58	6	18	Mature	Fair	3.6m	Neighbour	Preserve	Bark injury
4	<i>Acer platanoides</i>	Norway Maple	15	12	8	Mature	Fair/Good	1.8m	Neighbour	Preserve	
5	<i>Acer platanoides</i>	Norway Maple	9	12	8	Mature	Fair/Good	1.2m	Neighbour	Preserve	
6	<i>Acer platanoides</i>	Norway Maple	60	25	10	Mature	Fair	4.2m	Neighbour	Preserve	
7	<i>Gymnocladus dioica</i>	Kentucky Coffeetree	3.5	3	2	Immature	Fair	N/A	City	Remove	Newly planted deciduous tree
8	<i>Gleditsia triacanthos</i>	Honey Locust	5.5	4	3	Immature	Fair	1.2m	City	Preserve	Newly planted deciduous tree
9	<i>Gleditsia triacanthos</i>	Honey Locust	4	4	2	Immature	Fair	1.2m	City	Preserve	Newly planted deciduous tree

TREE PRESERVATION PLAN



GENERAL NOTES

CONTRACTOR IS RESPONSIBLE FOR ALL LOCATES INCLUDING ALL UNDERGROUND SERVICES PRIOR TO ANY EXCAVATION OR INSTALLATIONS. THE CONTRACTOR IS REQUIRED TO NOTIFY THE VARIOUS UTILITY COMPANIES 48 HOURS PRIOR TO THE COMMENCEMENT OF ANY WORK.

ANY ACCOMPANYING DOCUMENTATION RELATING TO THE LANDSCAPE PLAN AND/OR PRESERVATION PLAN SUCH AS TENDER DOCUMENTS AND CHANGE NOTICES ARE TO BE ENDORSED BY "JDB" PRIOR TO THE BEGINNING OF ANY SITE WORKS. IN THE EVENT THAT OF A DISCREPANCY THE DRAWING SHALL BE ASSUMED CORRECT.

IT IS THE RESPONSIBILITY OF THE PERSON OR PERSONS RESPONSIBLE FOR THE CONSTRUCTED WORKS TO NOTIFY THE LANDSCAPE ARCHITECT WHEN PREPARED FOR ANY REQUIRED INSPECTIONS AND SIGN OFFS.

SCHEDULED MEETINGS SHALL TAKE PLACE AT THE CLOSEST MUTUALLY CONVENIENT TIME.

No.	REVISION	DATE	APRVD.
1.	CLIENT REVIEW	June 27, 2025	CR
2.	SUBMIT FOR REZONING	July 30, 2025	CR
3.	RESUBMIT FOR REZONING	December 11, 2025	CR

ALL DRAWINGS AND SPECIFICATIONS ARE INSTRUMENTS OF SERVICE AND ARE THE PROPERTY OF "JDB". DRAWINGS ARE NOT TO BE MODIFIED AND/OR REPRODUCED WITHOUT THE WRITTEN CONSENT OF "JDB". REPRODUCTION OF DRAWINGS IN ANY FORM WITHOUT THE CONSENT OF "JDB" VOIDS THE DRAWING AT WHICH TIME "JDB" ACCEPTS NO LIABILITY FOR THE DRAWING CONTENT OR WORKS RESULTING FROM SAID REPRODUCTION. DRAWINGS MAY BE REPRODUCED BY MUNICIPAL AND GOVERNMENT AGENCIES RESPONSIBLE FOR APPROVALS FOR THEIR OWN USE.

"JDB" RESERVES THE RIGHT TO WITHDRAW ANY DRAWING(S) FROM GOVERNMENT OR MUNICIPAL AGENCIES WHETHER APPROVED OR NOT IN THE EVENT THAT ACCOUNTS ARE NOT SETTLED OR REMAIN OUTSTANDING.

IT IS THE RESPONSIBILITY OF THE CONTRACTOR TO VERIFY ALL DIMENSIONS ON THE SITE AND REPORT ANY DISCREPANCIES OR VARIATIONS FROM THE SUPPLIED INFORMATION TO THE LANDSCAPE ARCHITECT WITH THE PROJECT. "JDB" IS NOT RESPONSIBLE FOR THE ACCURACY OF SURVEY, ARCHITECTURAL, MECHANICAL, ENGINEERING OR ELECTRICAL INFORMATION SHOWN ON THE DRAWING. FOR FURTHER INFORMATION REFER TO APPROPRIATE SURVEY, ARCHITECTURAL, MECHANICAL, ENGINEERING OR ELECTRICAL DRAWINGS PRIOR TO PROCEEDING WITH ANY WORKS.

THIS DRAWING IS NOT TO BE SCALED.

Client info:

Sajecki Planning Inc.
tony@sajeckiplanning.com
(416) 639 2449

BASE PLAN REVISED:

ACCEPTED BY:

Chloé Robbins
Certified Arborist
OALA, ISA ON-3312A

DATE:

JDB Landscaping Inc.

Urban Designers
Landscape Architects

5-190 Minet's Point Rd. Suite #403
Barrie, Ontario
L4N 8J8

C: 705-816-0042

50 High Street East
City of Mississauga

TREE INVENTORY/PRESERVATION PLAN

SCALE: AS SHOWN	DESIGNED BY: CR	REVIEWED BY: HES
MUNICIPAL FILE No.	OUR FILE REF. # 15-25	TP-1