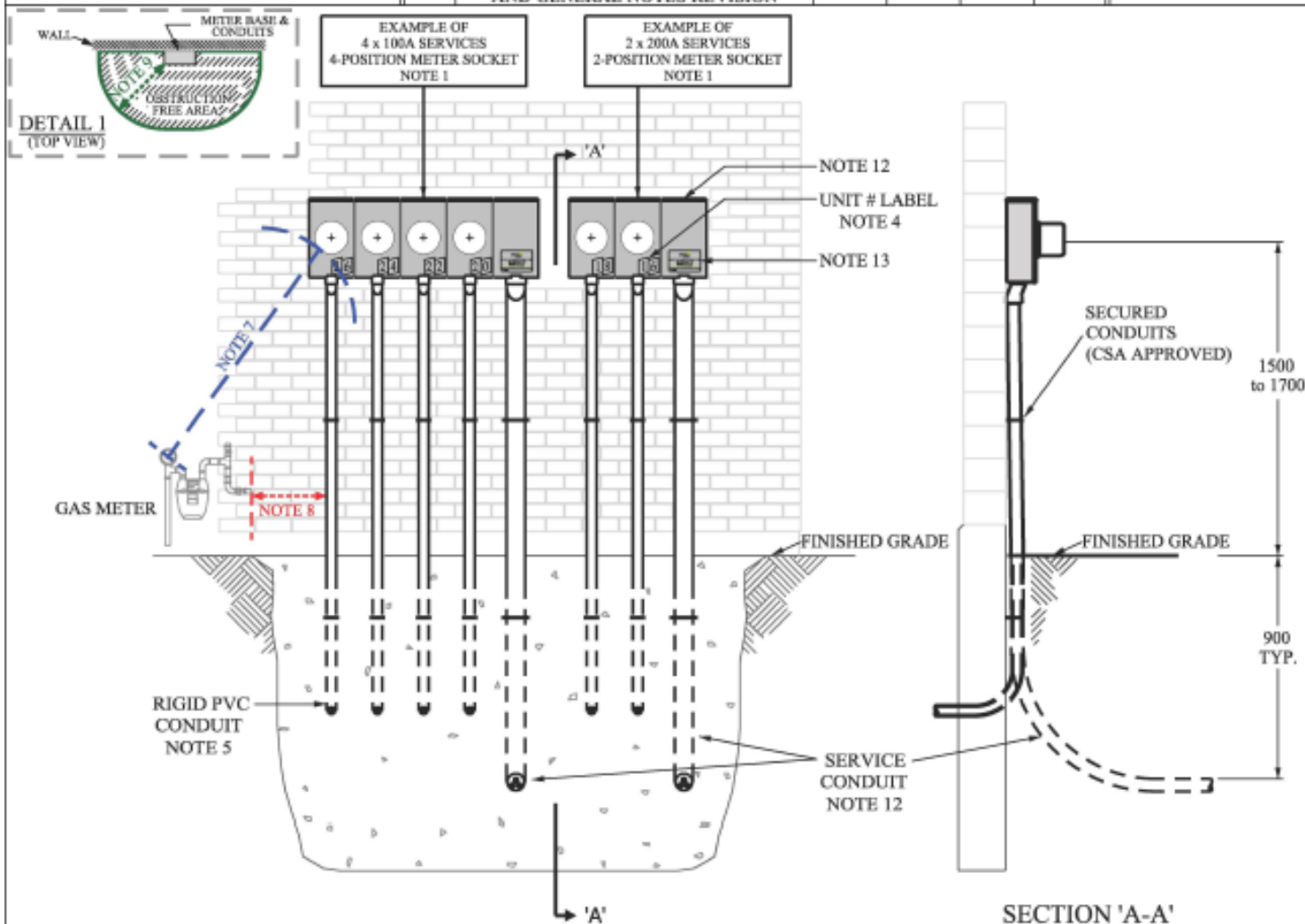


METRIC LINEAR DIMENSIONS IN MILLIMETER

No.	Revision	Drawn by	Checked by	Approved by	Date	Std. No.
R2	ADDED 4-POSITION METER SOCKET AND GENERAL NOTES REVISION	J.I.	A.I.	A.F.	03/2025	(1 of 1) 20-0230



NOTES:

1. ABOVE DIAGRAMS ARE FOR ILLUSTRATION PURPOSES ONLY. METER BASES SHALL BE OF A TYPE APPROVED BY ALECTRA UTILITIES AS PER **STD. 20-0001**.
2. ALL SECONDARY CABLE FEEDS FROM THE TRANSFORMER TO THE METER BASE ARE SIZED FOR A MINIMUM AMPACITY RATING OF 80% OF THE COMMON BUS RATING OF THE METER BASE. THE NUMBER OF SERVICES AND SERVICE SIZE SHALL BE DETERMINED IN ACCORDANCE WITH THE REQUIREMENTS OF **STD. 25-2052** & THE OESC FOR SERVICES 750V AND BELOW.
3. THE METER BASE SHALL BE SUPPLIED AND INSTALLED BY THE CUSTOMER.
4. UNIT # MUST BE PERMANENTLY ATTACHED TO THE BASE AND CORRESPONDING SERVICE PANEL WITH A NON-FADING LABEL. THE UNIT # WILL BE WRITTEN ON THE INSIDE OF THE METER BASE AND SERVICE PANEL WITH A PERMANENT MARKER.
5. ALL METER BASE AND CONDUIT INSTALLATIONS SHALL BE IN ACCORDANCE WITH THE ONTARIO ELECTRICAL SAFETY CODE.
6. NO ATTACHMENTS SHALL BE PERMITTED TO THE CONDUITS EXCEPT COMMUNICATION UTILITY EQUIPMENT.
7. THE ELECTRICAL METER SHALL HAVE A MINIMUM 900mm RADIAL CLEARANCE FROM THE DISCHARGE OPENING OF THE NATURAL GAS RELIEF DEVICE AND VENT. HOWEVER, THIS COULD BE REDUCED TO A MINIMUM 300mm PROVIDED THAT THE DISCHARGE OPENING OF THE NATURAL GAS RELIEF DEVICE AND VENT IS INSTALLED WITH AN APPROVED OVERPRESSURE CUT-OFF (OPCO) WITH LIMITED RELIEF (LR) OR NO RELIEF (P). THE OVERPRESSURE RELIEF DEVICE MUST BE MARKED "LP-OPCO" OR "P-OPCO".
8. THE ELECTRICAL CONDUIT(S) SHALL HAVE A MINIMUM 300mm CLEARANCE FROM THE GAS METER, ALL ASSOCIATED PIPING AND ACCESSORIES. THE CUSTOMER HOUSE GAS LINE SHALL NOT BE PERMITTED TO CROSS THE ELECTRICAL CONDUIT(S).
9. THE METER BASE AND CONDUIT(S) SHALL BE PROVIDED AND MAINTAINED WITH A MINIMUM 1000mm RADIAL OBSTRUCTION FREE AREA FROM COMMUNICATIONS STRUCTURES, FENCES, TREES, PLANTS, SHRUBS, AIR CONDITIONING UNITS AND ANY OTHER STRUCTURES, SEE **DETAIL 1**.
10. INSIDE THE METER BASE, ALL THE CONDUCTORS, EXCEPT THE NEUTRAL, SHALL REQUIRE A 600mm LOOP OF CABLES MEASURED FROM THE METER BASE TERMINALS.
11. THE METER BASE SHALL BE LOCATED WITHIN 1500mm OF THE FRONT FACADE OF THE BUILDING OR AS APPROVED BY ALECTRA.
12. FOR UNDERGROUND SERVICE ROUTE AND SUPPLIED FROM ALECTRA-OWNED PAD-MOUNTED TRANSFORMER (INSTALLED ON CITY BOULEVARD), THE DEMARCATION POINT SHALL BE AT THE LINE SIDE OF THE METER BASE AND SHALL BE INSTALLED AS PER **STD. 37-211 (Legacy BH)**, **STD. 25U-120, FIG. 3 (Legacy EHM)**, **STD. 25U-2040, FIG. 3 (Legacy HUC)**, **STD. 17-101 (Legacy PS)**, **STANDARD PRACTICE AT (Legacy GH)** AND **STD. 25-2052 (ALECTRA)**.
13. REFER TO **STD. 20-0005** FOR LABELS INSTALLATION INDICATING SUPPLY AUTHORITY CONDUCTORS CONTINUOUS CURRENT RATING 80% & 100%.



Construction Standard Certificate of Approval
The Construction Standard meets the safety requirements of Section 4 of Regulation 22/04
Richard Bassindale 03/2025
Name Date
Richard Bassindale, P.Eng., MBA
Signature & Professional Designation

ORIGINAL
Drawn by: J.I.
Checked by: S.I.
Approved by: A.F.
Date: Jun-2024

Title:
**UNDERGROUND SERVICE
RESIDENTIAL, 400A MULTIPLE
METER BASES FOR CONDO
TOWNHOUSES**