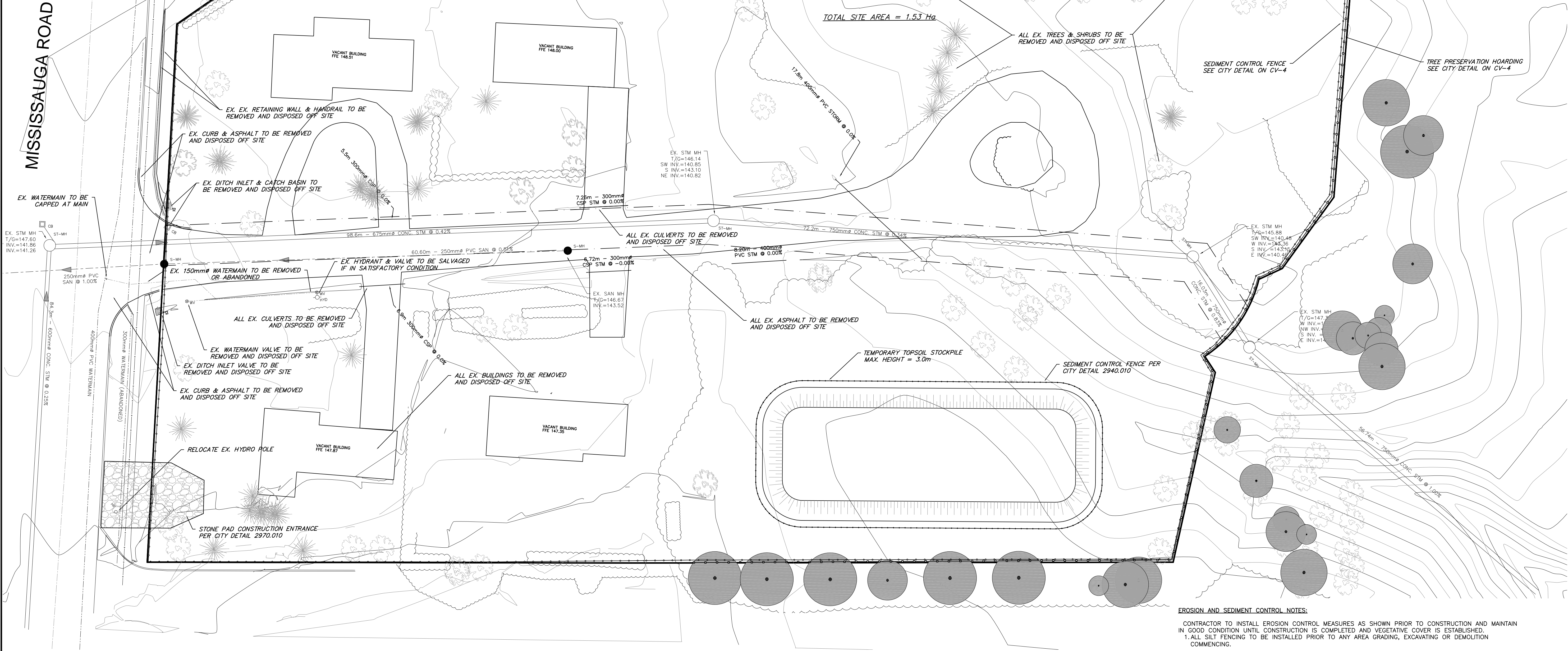


EGLINTON AVE W.



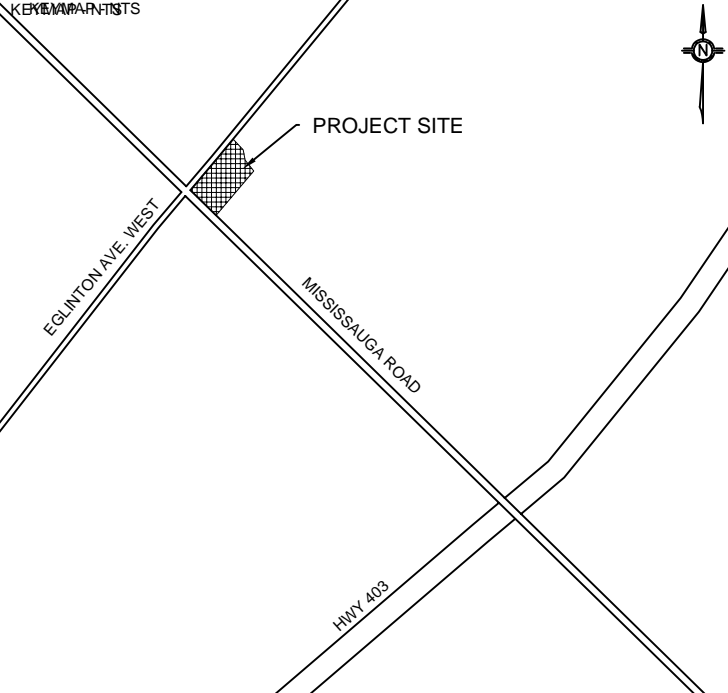
- CITY OF MISSISSAUGA NOTES:**
- ALL SEDIMENT CONTROL FENCING IS TO BE ERECTED PRIOR TO THE COMMENCEMENT OF ANY SITE GRADING OPERATIONS, AS PER CITY OF MISSISSAUGA STANDARD 2940.01
  - ALL CATCHBASINS WITHIN LANDSCAPED AREAS TO HAVE SEDIMENT BARRIER (CITY OF MISSISSAUGA STANDARD 2930.02 OR 2930.03) ERECTED IMMEDIATELY AFTER CATCHBASIN INSTALLATION. SEDIMENT PROTECTION BARRIER TO BE MAINTAINED ON A REGULAR BASIS OR TO THE SATISFACTION OF THE CITY OF MISSISSAUGA.
  - ALL ROADSIDE CATCHBASINS TO HAVE SEDIMENT PROTECTION AS PER CITY OF MISSISSAUGA STANDARD 2930.04 INSTALLED IMMEDIATELY AFTER CATCHBASIN INSTALLATION. SEDIMENT PROTECTION BARRIER TO BE MAINTAINED ON A REGULAR BASIS OR TO THE SATISFACTION OF THE CITY OF MISSISSAUGA.
  - CONSTRUCTION SEQUENCE:
    - INITIAL SEDIMENT CONTROL INSTALLATION
    - SITE GRADING OPERATIONS
    - UNDERGROUND SERVICING OPERATIONS
    - BUILDING CONSTRUCTION
    - FINAL GRADING OPERATIONS
  - IF SITE CONSTRUCTION ACTIVITIES ARE INTERRUPTED AND/OR INACTIVITY EXCEEDS 30 DAYS, ALL STRIPPED AND/OR BARE SOIL AREAS ARE TO BE STABILIZED BY SODDING/SEEDING/MULCHING OR OTHER APPROVED METHOD, TO THE SATISFACTION OF THE CITY OF MISSISSAUGA.
  - THIS CONTROL PLAN IS PREPARED FOR SUBMISSION TO THE CITY MISSISSAUGA IN CONJUNCTION WITH AN APPLICATION FOR EROSION AND SEDIMENT CONTROL PERMIT NO. \_\_\_\_\_ UNDER THE EROSION AND SEDIMENT CONTROL BY-LAW NO 512-91, AS AMENDED.
  - ALL EROSION AND SEDIMENT CONTROL MEASURE ARE TO BE REGULARLY INSPECTED AND MAINTAINED, AS REQUIRED, TO THE SATISFACTION OF THE CITY OF MISSISSAUGA.
  - DURING ALL CONSTRUCTION PHASES, MUD TRACING CONTROL, CONSISTING OF FLUSHING AND SWEEPING ROADS, IS TO BE PROVIDED FOR ALL ROADS, AS WARRANTED, IN ACCORDANCE WITH THE CITY OF MISSISSAUGA MUD TRACKING CONTROL POLICY.

- NOTE:**
- CONTRACTOR TO CONTACT MGM CONSULTING INC. IMMEDIATELY SHOULD THERE BE ANY CONFLICTS BETWEEN EXISTING CONDITIONS AND PROPOSED GRADING AND/OR SERVICING DESIGN, OR CONFLICTS IN CONSTRUCTING THE WORK AS PER THE INTENT OF THE APPROVED DESIGN PRIOR TO CONSTRUCTION.
- NOTE:**
- ALL WORK TO CONFORM TO THE LATEST MUNICIPAL STANDARDS AND SPECIFICATIONS AS WELL AS THE LATEST ADOPTED ONTARIO PROVINCIAL STANDARD DRAWINGS AND SPECIFICATIONS.
  - ALL DISTURBED AREAS TO BE RESTORED TO ORIGINAL CONDITION OR BETTER TO SATISFACTION OF THE MUNICIPALITY AND MGM CONSULTING INC.
  - CONTRACTOR TO LOCATE AND PROTECT ALL EXISTING SERVICES AND UTILITIES PRIOR TO AND DURING CONSTRUCTION
  - CONTRACTOR TO LOCATE AND CONFIRM ALL EXISTING UTILITIES AND SERVICE INFORMATION PRIOR TO CONSTRUCTION
  - CONTRACTOR TO ENSURE ADEQUATE CLEARANCE FROM ALL EXISTING SERVICES AND UTILITIES
  - CONTRACTOR TO CONFIRM ALL EXISTING INVERTS PRIOR TO INTERNAL SERVICING.
  - CONTRACTOR TO CONFIRM THE PAVEMENT STRUCTURE THICKNESS' BASED ON THE GEOTECHNICAL REPORT.

- EROSION AND SEDIMENT CONTROL NOTES:**
- CONTRACTOR TO INSTALL EROSION CONTROL MEASURES AS SHOWN PRIOR TO CONSTRUCTION AND MAINTAIN IN GOOD CONDITION UNTIL CONSTRUCTION IS COMPLETED AND VEGETATIVE COVER IS ESTABLISHED.
- ALL SILT FENCING TO BE INSTALLED PRIOR TO ANY AREA GRADING, EXCAVATING OR DEMOLITION COMMENCING.
  - EROSION CONTROL FENCING TO BE INSTALLED AROUND BASE OF ALL STOCKPILES
  - EROSION PROTECTION TO BE PROVIDED AROUND ALL STORM AND SANITARY MANHOLE AND CATCHBASINS
  - ADDITIONAL EROSION CONTROL MEASURES MAY BE REQUIRED AS SITE DEVELOPMENT PROGRESSES. CONTRACTOR TO PROVIDE ALL ADDITIONAL EROSION CONTROL STRUCTURES.
  - EROSION CONTROL STRUCTURES TO REMAIN IN PLACE UNTIL ALL DISTURBED GROUND SURFACES HAVE BEEN REESTABLISHED.
  - NO ALTERNATIVE METHODS OR EROSION PROTECTION SHALL BE PERMITTED UNLESS APPROVED BY THE ENGINEER
  - CONTRACTOR TO CLEAN ROADWAY AND SIDEWALKS OF SEDIMENT RESULTING FROM CONSTRUCTION TRAFFIC FROM THE SITE EACH DAY.
  - CONTRACTOR MUST REMOVE EROSION AND SEDIMENTATION FENCING PRIOR TO COMPLETION OF PROJECT. CONTRACTOR TO HAVE EROSION AND SEDIMENTATION FENCE INSPECTED WHEN VEGETATION HAS ESTABLISHED, BUT PRIOR TO FENCE BECOMING OVERGROWN. ENGINEER'S REPRESENTATIVE TO DETERMINE IF VEGETATION HAS REACHED THE CRITICAL POINT AND WILL THEN INSTRUCT CONTRACTOR TO REMOVE FENCE.
  - FOR DETAILS OF ALL ELECTRICAL REMOVALS INCLUDING LIGHT STANDARDS, AND UNDERGROUND DUCT AND WIRING, REFER TO ELECTRICAL DRAWINGS
  - FOR DETAILS ON TREE REMOVALS, AND PROTECTION REFER TO LANDSCAPING DRAWINGS

- MAINTENANCE RECOMMENDATIONS**
- EROSION CONTROL STRUCTURES TO BE MONITORED REGULARLY AND ANY DAMAGE REPAIRED IMMEDIATELY. SEDIMENTS TO BE REMOVED WHEN ACCUMULATIONS REACH A MAXIMUM OF 1/3 THE HEIGHT OF THE FENCE.
  - OWNERS REPRESENTATIVE TO MONITOR EROSION CONTROL STRUCTURES TO ENSURE FENCING IS INSTALLED AND MAINTENANCE IS PERFORMED TO CITY REQUIREMENTS.

- EROSION & SEDIMENT CONTROL SEQUENCES:**
- INSTALL CONSTRUCTION ENTRANCE MUD MAT
  - INSTALL SILT FENCE AROUND THE SITE PERIMETER. SINGLE ROW SILT FENCE DETAIL AS SHOWN ON THE SEDIMENT AND EROSION CONTROL PLAN ATTACHED.
  - DURING THE SERVICING CONSTRUCTION, LIMIT OPEN TRENCH LENGTHS TO MINIMIZE EROSION POTENTIAL.
  - DURING WORK STOPPAGES OR INCLEMENT WEATHER, PLUG ENDS OF OPEN SEWERS TO PREVENT DOWNSTREAM SEDIMENTATION
  - PROVIDE CATCHBASIN SEDIMENT PROTECTION ON ALL CATCHBASIN AND CATCHBASIN MANHOLES FOR THE DURATION OF CONSTRUCTION.
  - ENSURE SILT LADEN WATER FROM TRUCK WASH AREAS ARE DIRECTED TO AREAS PROTECTED BY A FILTER RING AND AT LEAST 15 METERS FROM A WATERCOURSE.
  - ALL SILT LADEN WATER DURING DEWATERING OF TRENCHES TO BE DIRECTED TO AN AREA PROTECTED BY A FILTER RING OR TO A GEOTEXTILE FILTER BAG. FILTRATION TO BE A MINIMUM OF 15 METERS FROM A WATERCOURSE.
  - PROVIDE DUST CONTROL DURING DRY PERIODS AS DIRECTED BY THE SITE ENGINEER OR CONSERVATION
  - SWEEP EXTERNAL STREETS AS DIRECTED BY THE ENGINEER OR CONSERVATION.
  - FOLLOWING BASE COURSE ASPHALT, CATCHBASINS TO BE REWRAPPED WITH GEOTEXTILE.
  - PERIODIC STREET CLEANING AND CATCHBASIN CLEANOUT TO BE PERFORMED AS REQUIRED.



- LEGEND**
- UB
  - ✕ LLS
  - HD
  - HW
  - CB
  - MH
  - PROPOSED SILT FENCE
  - PROPOSED TREE PRESERVATION HOARDING
- EXISTING HYDRO POLE**
- EXISTING LIGHT STANDARD
  - EXISTING FIRE HYDRANT
  - EXISTING WATER VALVE
  - EXISTING CATCHBASIN
  - EXISTING MANHOLE

No.	DATE	DRAWING ISSUE DESCRIPTION
1	2025 06 23	FIRST SUBMISSION
2	2025 10 08	ISSUED FOR REVIEW
3	2025 10 16	SECOND SUBMISSION

LEGAL AND TOPOGRAPHICAL SURVEY PROVIDED BY:  
SCHAEFFER DZALDOV BENNETT LTD.  
JOB NO. 15-155-01, DATED JULY 21, 2015.

**SITE BENCHMARK:**  
ELEVATIONS SHOWN HEREON ARE REFERRED TO CITY OF MISSISSAUGA BENCHMARK No. 970, HAVING A PUBLISHED ELEVATION OF 148.702 METRES.

CONSULTANT:

**PROFESSIONAL ENGINEER**

**J. KOZYM**

100517316

OCT-16/2025

PROVINCE OF ONTARIO

**MGM CONSULTING INC.**

Consulting Engineering & Project Management

555 Industrial Drive  
Suite 201  
Mississauga, Ontario  
L5T 5E1

Tel: (905) 887-8878  
Fax: (905) 887-1339  
Email: mgm@migm.on.ca  
www.migm.on.ca

**KINGRIDGE DEVELOPMENTS**

**OWNER INFO:**  
NAME: DAN MARION  
E-MAIL: dan@kingridgedevelopments.ca  
MAIL ADDRESS: 1660 NORTH SERVICE RD. EAST, SUITE 109-B  
OXFORD, ON L6H 7G3  
PHONE: 416-277-7466

**PROJECT:**  
THORNY BRAE TOWNHOUSE DEVELOPMENT  
1775 THORNY BRAE PLACE MISSISSAUGA  
ONTARIO

**DRAWING:**  
**REMOVALS & EROSION AND SEDIMENT CONTROL PLAN**

DRAWN BY: <b>BN</b>	CHECKED BY: <b>MLS</b>	JOB CAPTAIN: <b>JB</b>
SCALE: <b>1:300</b>	PROJECT NO.: <b>2025-004</b>	SHEET NO.: <b>CV-1</b>
CURRENT ISSUE: <b>3</b>	CURRENT REV: <b>2</b>	