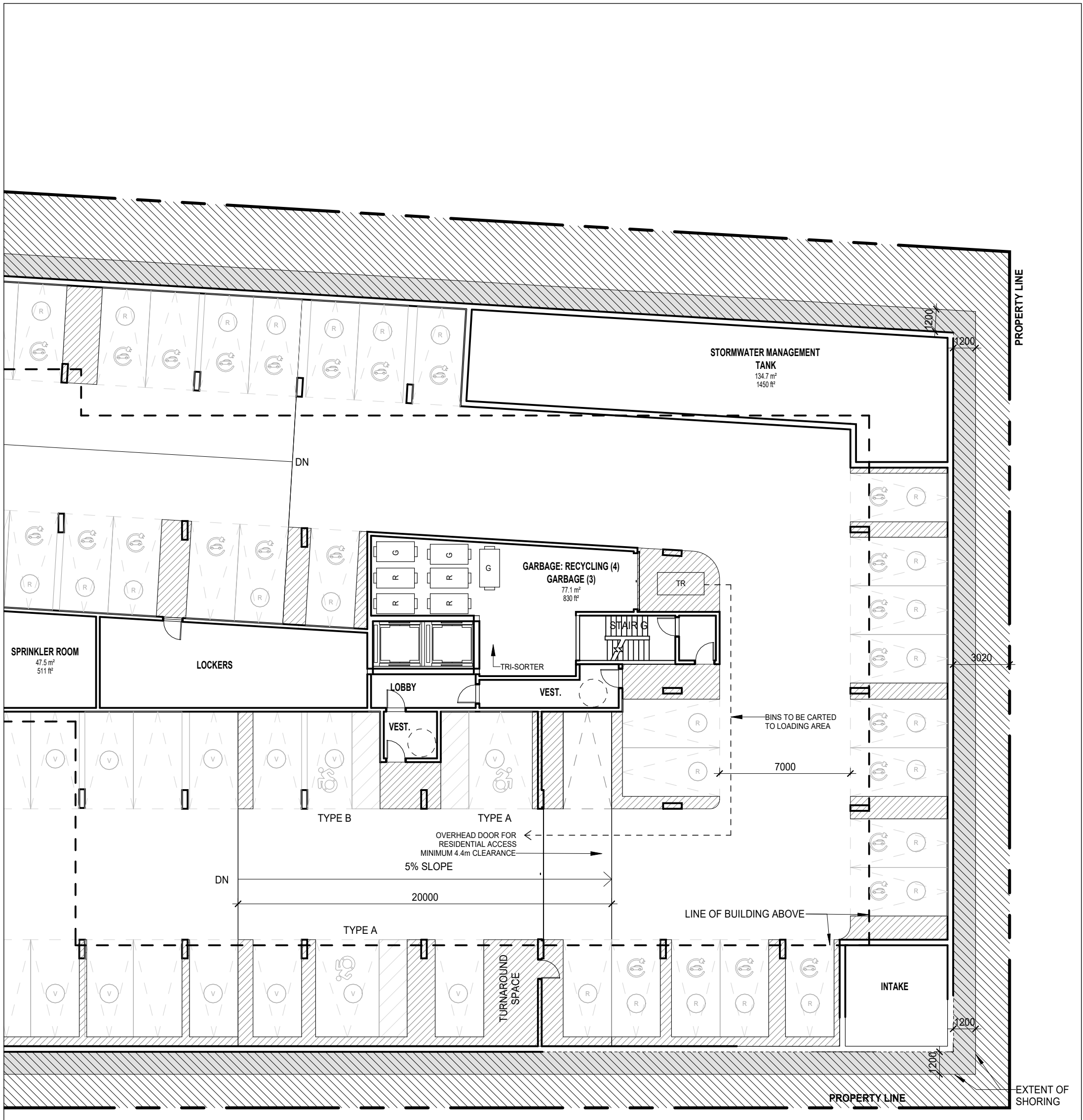


2 WASTE MANAGEMENT - WEST BUILDING - GROUND FLOOR  
A104.S



1 WASTE MANAGEMENT - EAST BUILDING - LEVEL P1  
A104.S

NOTE 1  
ALL ACCESS DRIVEWAYS TO BE USED BY THE COLLECTION VEHICLE WILL BE LEVEL (+8%), HAVE A MINIMUM VERTICAL CLEARANCE OF 4.4m THROUGHOUT, MINIMUM 6m WIDE THROUGHOUT.

NOTE 2  
ANY/ALL OVERHEAD DOORS THE COLLECTION VEHICLE WILL BE PASSING THROUGH HAVE A MINIMUM WIDTH OF 6m AND MINIMUM OVERHEAD CLEARANCE OF 4.4m. IF OVERHEAD DOORS ARE WITHIN TYPE G LOADING AREA, OVER HEAD DOORS MUST HAVE VERTICAL CLEARANCE OF 6.1m

NOTE 3  
A TRAINED ON-SITE STAFF WILL BE AVAILABLE TO MANEUVER BINS FOR THE COLLECTION DRIVER AND ALSO ACT AS A FLAGMAN WHEN THE TRUCK IS REVERSING. IN THE EVENT THAT ON-SITE STAFF IS UNAVAILABLE AT THE TIME THE CITY COLLECTION VEHICLE ARRIVES AT THE SITE, THE COLLECTION VEHICLE WILL LEAVE THE SITE AND NOT RETURN UNTIL THE NEXT SCHEDULED COLLECTION DAY.

NOTE 4  
WARNING SYSTEM INCLUDING LIGHTS AND SIGNAGE SHALL BE INSTALLED TO CAUTION MOTORISTS LEAVING THE PARKING GARAGE OF HEAVY VEHICLES WHEN LOADING OPERATIONS ARE OCCURRING.

NOTE 5  
COLLECTION POINT TO BE CONSTRUCTED OF AT LEAST 200mm REINFORCED CONCRETE. SURFACE TO BE LEVEL (MAX. ± 2% SLOPE) ABLE TO SUPPORT A 35-TON COLLECTION VEHICLE.

NOTE 6  
MINIMUM 7.5m CLEARANCE OVERHEAD AT ENTIRE LOADING AND STAGING AREA FROM THE CONCRETE PAD, MUST BE FREE OF OBSTRUCTIONS (e.g. SPRINKLERS SYSTEMS, DUCTS, BALCONIES, WIRES AND TREES).

Date	No.	Description
REVISION RECORD		

2025-10-16	Issued for ZBA
2025-02-25	Resubmission/SPA
2025-02-25	Issued for ZBA/SPA
ISSUE RECORD	



**BDP.**  
**Quadrangle**

Quadrangle Architects Limited  
The West, 8 Spadina Avenue, Suite 2100, Toronto, ON M5V 0S8  
t 416 598 1240 www.bdpquadrangle.com

1470 Williamsport Drive  
Mississauga, ON  
for  
1470 Williamsport Holdings Inc.

23057 1:200 SJ LK  
PROJECT SCALE DRAWN REVIEWED

Waste Management Plan

A104.S

Note: This drawing is the property of the Architect and may not be reproduced or used without the expressed consent of the Architect. The Contractor is responsible for checking and verifying all levels and dimensions and shall report all discrepancies to the Architect and obtain clarification prior to commencing work.

LOADING / GARBAGE					
Loading Spaces			Required	Provided	
Refer to Traffic Report prepared by C.F. Crozier & Associates Inc., for additional information.					
Residential	283 Units	(loading space size 3.5m x 9m)	1	1	
TOTAL LOADING SPACES					1
GARBAGE & RECYCLABLE MATERIAL BIN CALCULATION					
	# Units	Bin Type	Requirement	Required Bins	
Garbage Bins	283	3-cubic Yards	1 bin/54 units	6	
Recycle Bins	283	3-cubic Yards	1 bin/45 units	7	
* 3-cubic Yard storage bin area: 1.26m high, 2.03m long, 1.07m deep					

