

D R A F T
Addendum to:
Heritage Impact Assessment

7564 Tenth Line West
Mississauga, ON



prepared by

CHC Limited

87 Liverpool Street, Guelph, ON N1H 2L2

(519) 824-3210

email oscott87@rogers.com

March 3, 2026

Table of Contents

1 INTRODUCTION - HERITAGE IMPACT ASSESSMENT (HIA) 1

2 GENERAL REQUIREMENTS 1

 2.1 Detailed site history 1

 2.2 Complete listing and full written description of all existing structures 1

 2.3 Documentation of the existing conditions related to the heritage resource 2

 2.4 Outline of the proposed developments 2

 2.5 Architectural drawings - elevations 5

 2.6 Trees 8

 2.7 Assessment of alternative development options and mitigation measures 9

 2.8 Summary of conservation principles 10

 2.9 Proposed demolition/alterations 10

 2.10 Consideration for salvage mitigation 10

3 SUMMARY STATEMENT AND CONSERVATION RECOMMENDATIONS 10

4 MANDATORY RECOMMENDATION 11

REFERENCES 12

Appendix 1 *City of Mississauga Heritage Impact Assessment Terms of Reference*, accessed from City web site February 24, 2026

Appendix 2 Qualifications of the author



all photographs by Owen R. Scott of CHC Limited., February 26, 2026 unless otherwise noted.

1 INTRODUCTION - HERITAGE IMPACT ASSESSMENT (HIA)

A Heritage Impact Assessment (HIA) for the property at 7564 Tenth Line West, Mississauga, was prepared by Megan Hobson, CAHP, April 23, 2021. That HIA was prepared to assess the impact of severing a parcel of land from the Part IV *Ontario Heritage Act* (OHA) designated property at 7564 Tenth Line West. It concluded that there was no negative impact as a result of the severance. At the time of the HIA, there was no plan for the severed lands. Plans have now been drawn for the lands and an addendum to the 2021 HIA is required to assess the potential impact from the development proposal on the adjacent designated heritage resource. The addendum follows the *City of Mississauga Cultural Heritage Impact Assessment Terms of Reference*, accessed from City's web site February 24, 2026 (Appendix 1) and has been prepared in response to a request from the property owner. The subject lands are not designated or listed, but adjacent to the Part IV designated property. As well as being designated under Part IV, the adjacent property is also a significant cultural heritage landscape.¹

2 GENERAL REQUIREMENTS

2.1 Detailed site history

See April 2021 HIA.

2.2 Complete listing and full written description of all existing structures

See April 2021 HIA.

Figure 1 illustrates the location and zoning of the properties on Tenth Line West and the adjacent designated property at 7564 Tenth Line West.



Figure 1

location map - Google Maps 2026

¹ Conserving Heritage Landscapes, Volumes 1, 2, 3, City of Mississauga, February 2, 2022

2.3 Documentation of the existing conditions related to the heritage resource

See April 2021 HIA.

2.4 Outline of the proposed developments

The proposed adjacent developments are comprised of two properties on the severed lands that were the object of the April 2021 HIA. The developments consists of :

- 1) a two-storey, 20,338 m² data centre fronting on Tenth Line West to the south of the adjacent heritage resource, which is 34 metres from the heritage property line at its closest point and approximately 220 metres from the Georgian farmhouse (Figures 2 & 4); and
- 2) two one-storey industrial buildings of 26,823 m² and 30,503 m² to the south and southwest of the adjacent heritage resource, which are at the closest point 68.25 metres from the heritage property line and approximately 280 metres from the Georgian farmhouse (Figure 3 & 4).

Figure 4 illustrates the context of the proposed development, an extension of similar buildings and land uses to the south fronting on Argenta Drive.

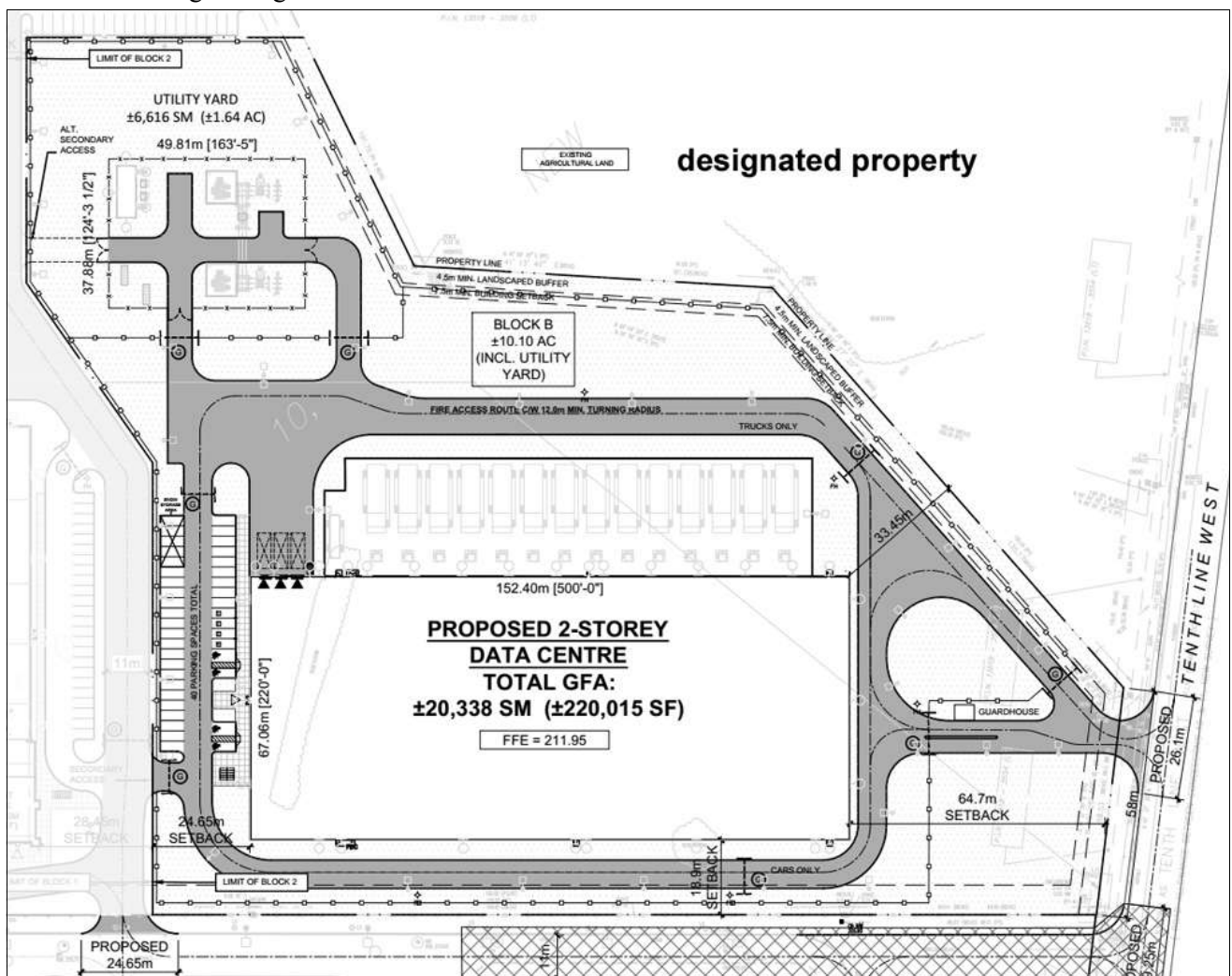


Figure 2

Site Plan, Data Centre - Petroff Partnership Architects, August 13, 2025

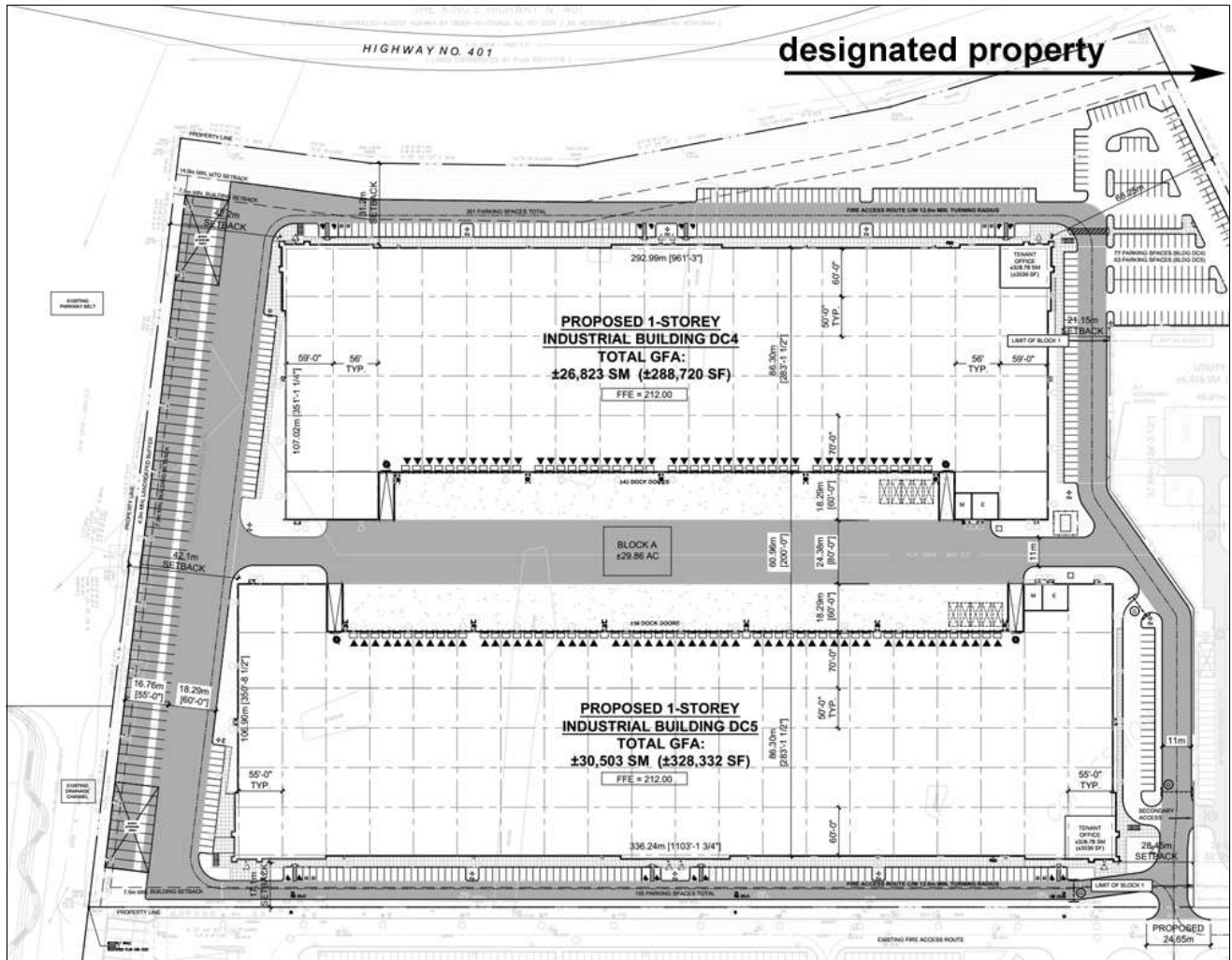


Figure 3 Site Plan, Industrial Buildings - *Petroff Partnership Architects, August 25, 2025*

The setting of the adjacent property has altered dramatically over time, currently being adjacent to two major limited access highways, a high voltage hydro transmission line, intensive commercial and industrial lands and a modern church. In spite of that, the property maintains its character with its Georgian residence, outbuildings and mature vegetation. The addition of three massive industrial buildings will provide little influence in addition to that which already exists on its setting. The residence and the core of the resource is well screened from the proposed developments. A zone change for the proposed developments to that of the adjacent industrial lands is required.

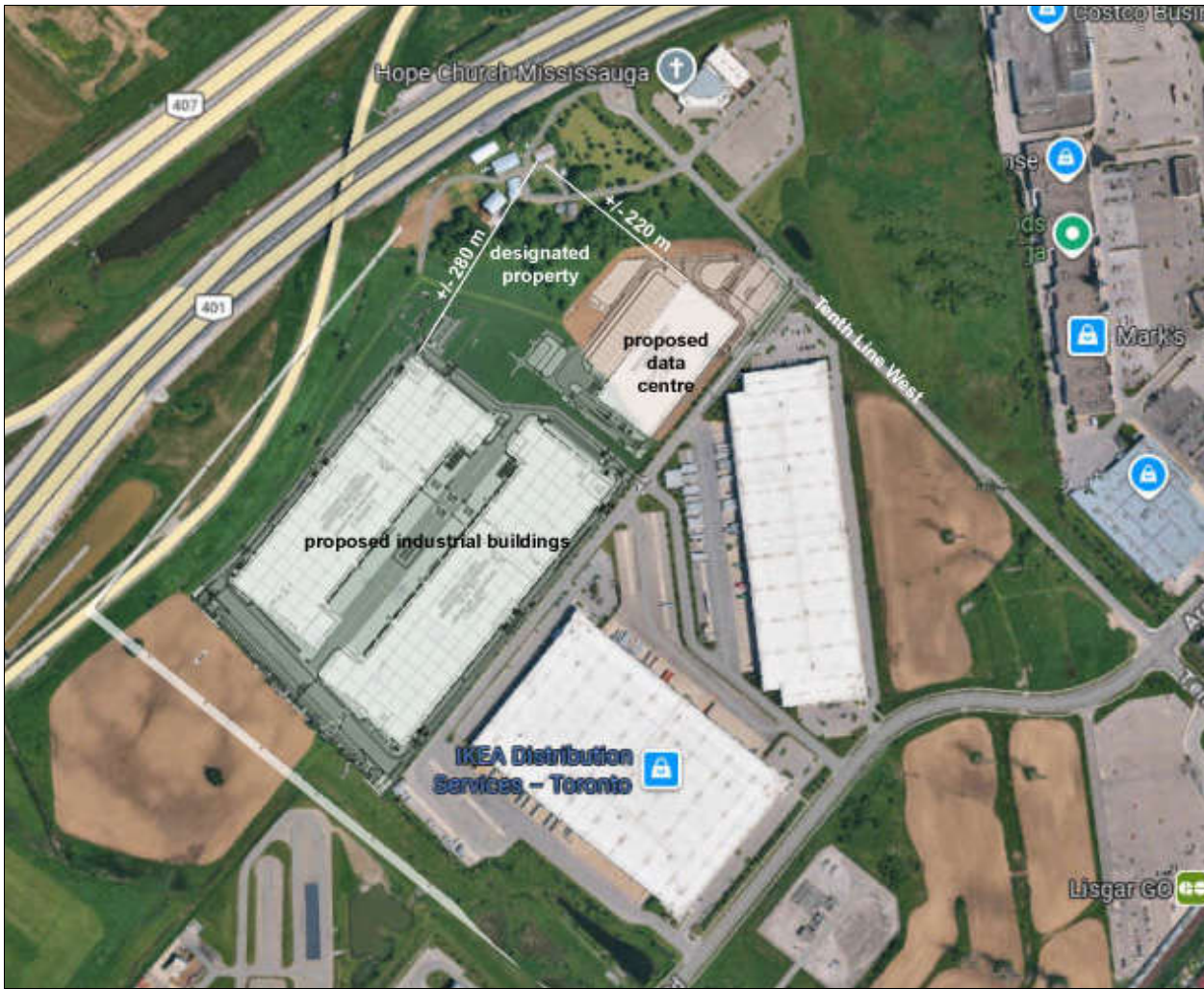


Figure 4 proposed development in context - Google Maps & from Petroff Partnership Architects

The proposed developments are situated in a commercial/industrial area and adjacent to two very large buildings, an IKEA distribution centre, and a Farrow Logistics distribution centre to the southeast. Lands on the east side of Tenth Line West opposite are occupied with a hydro corridor and east of that is a massive shopping complex. Highways 401 and 407 are to the north. Opposite the designated property is Hope Church (Figure 4). Figures 5 - 11 are views to the designated property from the proposed projects along the property lines (see Figure 12).



Figure 5 at Tenth Line West



Figure 6 at property line at rear of proposed Data Centre



Figure 7 at property line rear of proposed Data Centre



Figure 8 at property line rear of proposed Data Centre



Figure 9 at property line at rear of industrial building



Figure 10 at property line at rear of industrial building



Figure 11 at property line at rear of industrial building

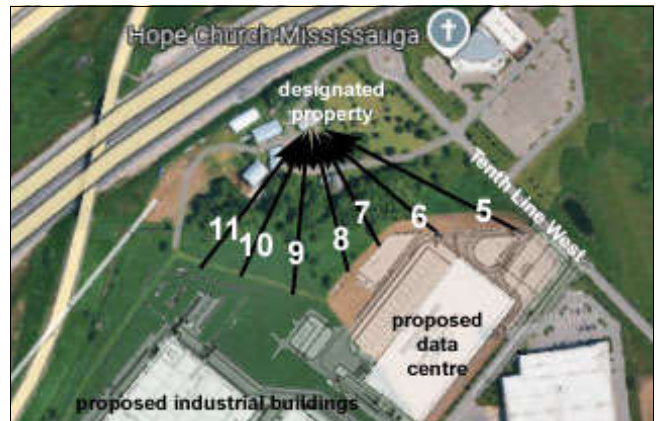


Figure 12 views to adjacent heritage property

2.5 Architectural drawings - elevations

Figures 13 - 15 are elevations of the proposed buildings. Fenestration is a combination of precast panels with a pattern, dark gray aluminum panels, vision glass panels, medium gray metal panels and a precast base.

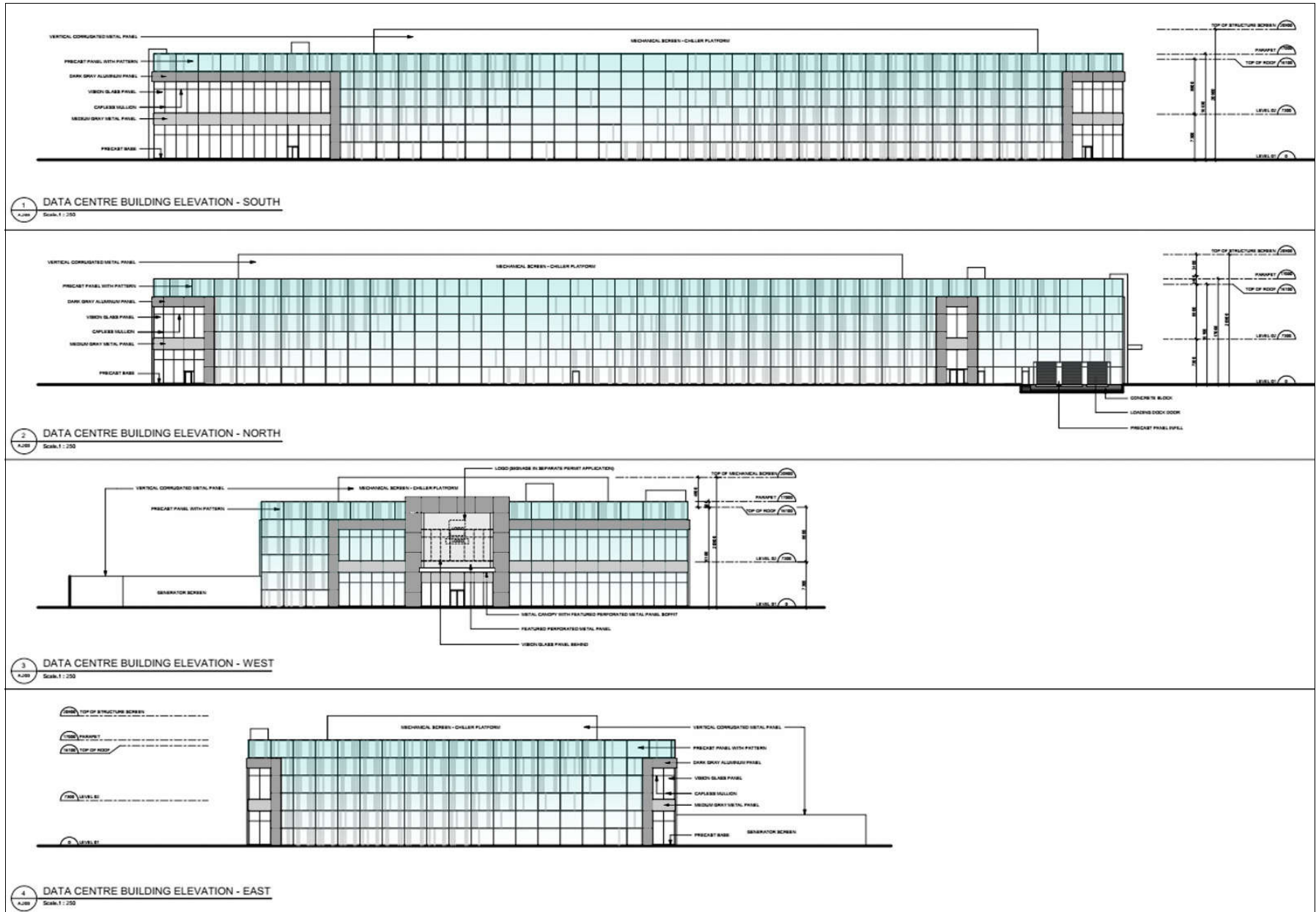


Figure 13

Data Centre elevations - Petroff Partnership Architects, August 13, 2025

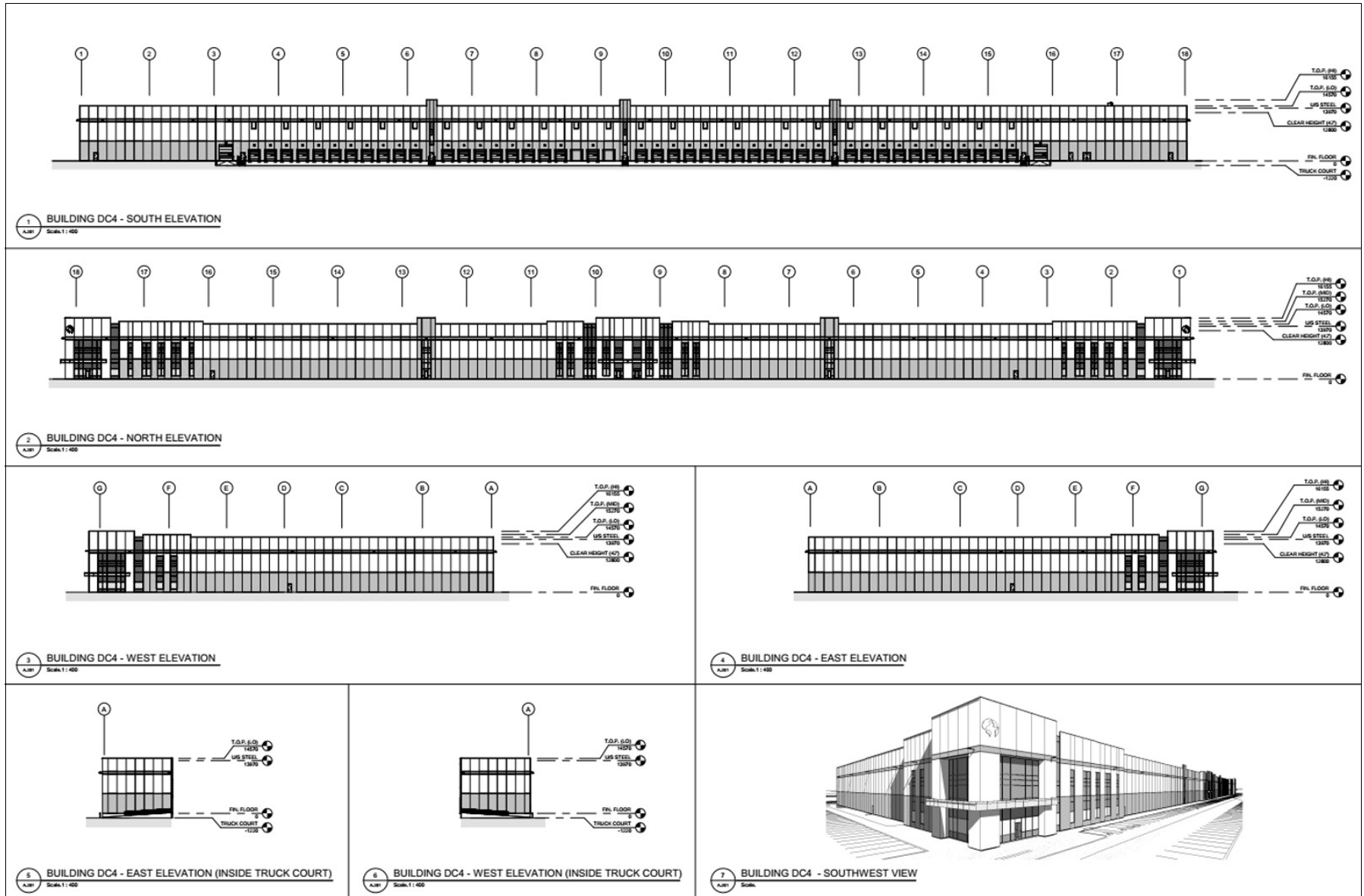


Figure 14

Industrial Building DC4 elevations - *Petroff Partnership Architects, August 15, 2025*

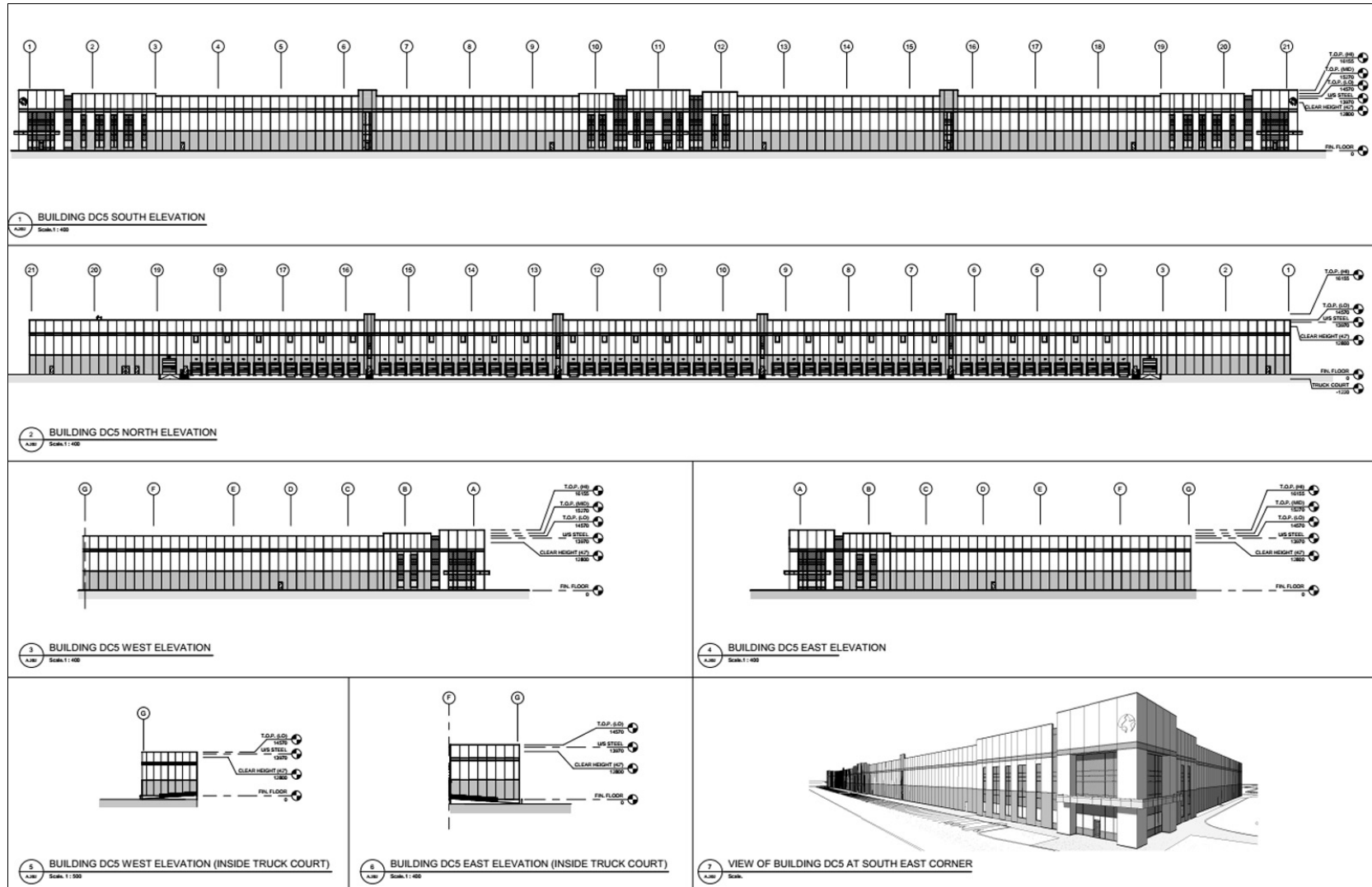


Figure 15

Industrial Building DC5 elevations - *Petroff Partnership Architects, August 15, 2025*

2.6 Trees

There are no trees on the properties; however, there are a substantial number of trees on the adjacent designated property. This vegetation effectively screens the Georgian residence from the project site (see Figures 5 - 11)

2.7 Assessment of alternative development options and mitigation measures

The Ontario Heritage Tool Kit (InfoSheet #5, Ministry of Culture) presents a number of potential mitigation measures:

- Alternative development approaches;
- Isolating development and site alteration from significant built and natural heritage features and vistas;
- Design guidelines that harmonize mass, setback, setting and materials;
- Limiting height and density;
- Allowing only compatible infill and additions;
- Reversible alterations;
- Buffer zones, site plan control, and other planning mechanisms.

Of those, two apply to these projects, namely limiting height and buffer zones. The proposed buildings are limited to two storeys and as well as the on-site vegetation on the adjacent heritage resource, substantial screen plantings are proposed on the projects lands (Figures 16 & 17).

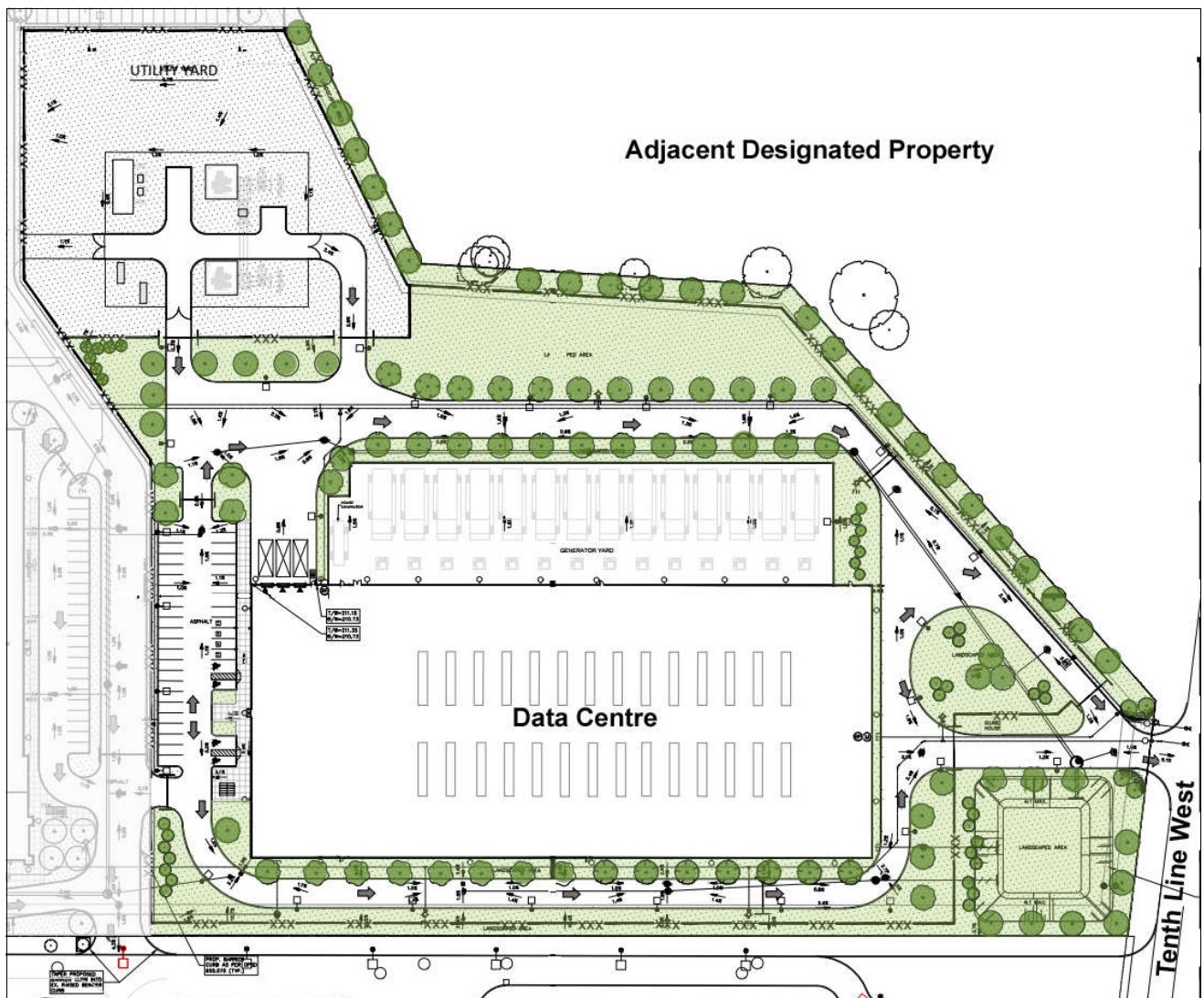


Figure 16

Landscape Plan, Data Centre - after MHBC, August 2025

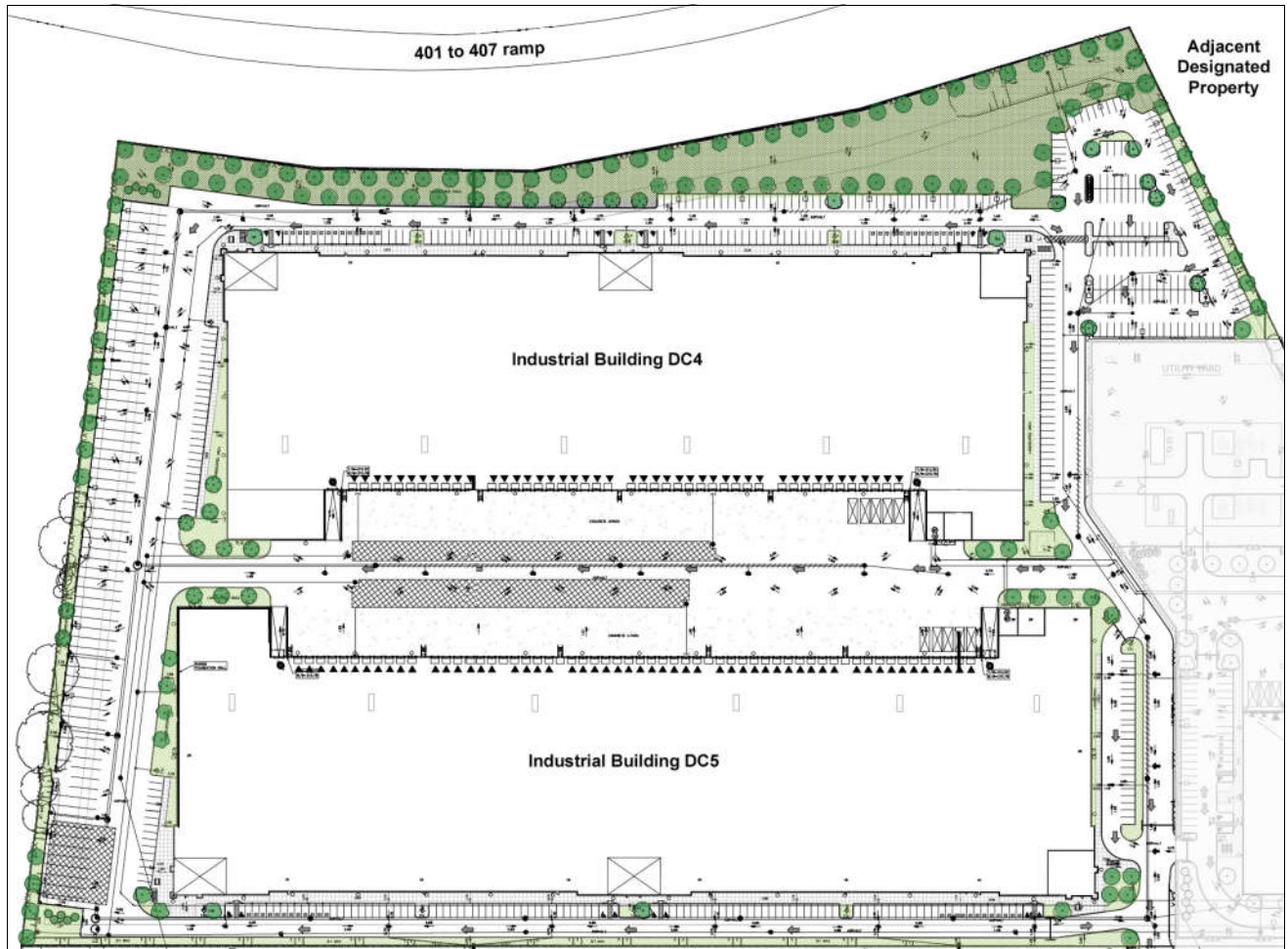


Figure 17

Landscape Plan, Industrial Buildings - after MHBC, August 2025

2.8 Summary of conservation principles

Not applicable

2.9 Proposed demolition/alterations

Not applicable

2.10 Consideration for salvage mitigation

Not applicable

3 SUMMARY STATEMENT AND CONSERVATION RECOMMENDATIONS

The cultural heritage resource is the Party IV designated property adjacent to the proposed developments. There is no expected negative impact posed by the proposed developments on the adjacent resource. It is not affected in a physical sense and it is well screened from the proposed developments from both on-site vegetation and substantial landscaping on the proposed development sites. No additional conservation or mitigation measures are required or warranted.

4 MANDATORY RECOMMENDATION

Not applicable

This draft HIA addendum is respectfully submitted by:

CHC Limited

A handwritten signature in black ink, appearing to read "Owen R. Scott". The signature is written in a cursive style with a long horizontal stroke at the end.

per: Owen R. Scott, CAHP

REFERENCES

7564 Tenth Line West Designating Bylaw 0108-2024 amending Designating Bylaw 857-79, City of Mississauga

Conserving Heritage Landscapes, Volumes 1, 2, 3, City of Mississauga, February 2, 2022

Heritage Impact Assessment, Hustler Farmstead, 7564 Tenth Line West, Mississauga, ON, 23 April 2021, Megan Hobson, CAHP

Ontario Heritage Tool Kit (InfoSheet #5, Ministry of Culture, Ontario)

Overall Site Plan, Data Centre, Petroff Partnership Architects, August 13, 2025

Overall Site Plan, Distribution Centre, Petroff Partnership Architects, August 15, 2025

Data Centre Overall Building Elevations, Petroff Partnership Architects, August 15, 2025

Building DC4 Overall Building Elevations, Petroff Partnership Architects, August 13, 2025

Building DC5 Overall Building Elevations, Petroff Partnership Architects, August 15, 2025

Surveyor's Real Property Report, Plan of Survey and Topography of Part of Lot 14, Concession 10, New Survey, Geographic Township of Trafalgar, City of Mississauga, Regional Municipality of Peel, Genesis Land Surveying Inc., October 16, 2024

Landscape Architectural Package, Data Centre, MHBC Planning, Urban Design & Landscape Architecture, August 2025

Landscape Architectural Package, Distribution Centre, MHBC Planning, Urban Design & Landscape Architecture, August 2025

Appendix 1



Heritage Impact Assessment Terms of Reference

1 Background: The Mississauga Official Plan

The City's Official Plan introduces cultural heritage resources in the following manner:

Mississauga's cultural heritage resources reflect the social, cultural and ethnic heritage of the city and, as such, are imperative to conserve and protect. Cultural heritage resources are structures, sites, environments, artifacts and traditions that are of cultural, historical, architectural, or archaeological value, significance or interest.

In compliance with the City's policy 7.4.1.12, as stated below, the City of Mississauga seeks to conserve, record, and protect its heritage resources:

*7.4.1.12: The proponent of any construction, development, or property alteration that might adversely affect a listed or designated cultural heritage resource or which is proposed adjacent to a cultural heritage resource will be required to submit a **Heritage Impact Assessment**, prepared to the satisfaction of the City and other appropriate authorities having jurisdiction.*

A Heritage Impact Assessment (HIA) is a study to determine the impacts to known and potential heritage resources within a defined area proposed for future development. The study includes an inventory of all heritage resources within the planning application area. The study results in a report, which identifies all known heritage resources, an evaluation of the significance of the resources, and makes recommendations toward mitigation measures that would minimize negative impacts to those resources.

An HIA may be required on a Designated or Listed property on the City's Heritage Register or where development is proposed adjacent to a known heritage resource. The requirement may also apply to unknown or recorded heritage resources, which are discovered during the development application stage or construction.¹

The City's Heritage Register includes properties that comprise [Cultural Heritage Landscapes \(CHLs\)](#). CHLs include neighbourhoods, roadways and waterways. Individual properties within these landscapes may or may not have cultural heritage value independent of the landscape. HIAs are required to ascertain the property's cultural heritage value and to ensure that any development maintains the CHL's cultural heritage value.

To determine the specific heritage status of a particular property, search [here](#) and then click the "Heritage" tab.

¹ For the definition of "development," please refer to the Mississauga Official Plan.

2 HIA Requirements:

- 2.1 A detailed site history to include a listing of owners from the Land Registry Office, relevant information specific to any other individuals who may have resided or are associated with the property, and a history of the site use(s). Provide history of the site uses to identify, describe and evaluate the significance of any persons, groups, trends, themes and or events that are historically or culturally associated with the subject property. However, please note that due to the Freedom of Information and Protection of Privacy Act (FIPPA), current property owner information must **not** be included. As such, Heritage Planning will request that current property owner personal information be redacted to ensure the reports comply with the Act.

The City of Mississauga recognizes the historic and continued use of the land now known as Mississauga by the Mississaugas of the Credit First Nation, the Haudenosaunee Confederacy the Huron-Wendat and Wyandot Nations and their ancestors. As such all HIAs must include recognition of Indigenous history and settlement and where appropriate, address Indigenous cultural heritage interests in the surrounding area. Specific attention should be paid to possible traditional use areas as well as sacred and other sites, which could exist on or near the property.

- 2.2 A complete listing and full written description of all existing structures, natural or human-made, on the property. Specific mention must be made of all the heritage resources on the subject property, which include, but are not limited to: structures, buildings, building elements (like fences and gates), building materials, architectural and interior finishes, natural heritage elements, landscaping, and archaeological resources. The description will also include a chronological history of the structure(s) developments, such as additions, removals, conversions, alterations etc.

The report will include a clear statement of the conclusions regarding the significance and heritage attributes of the cultural heritage resource.

A location map must be provided, with indications of existing land use, zoning, as well as the zoning and land use of adjacent properties.

- 2.3 Documentation of the existing conditions related to the heritage resource will include:

- Current legible internal photographs, external photographs from each elevation. Please note that due to FIPPA, photographs should not contain people or highlight personal possessions. The purpose of the photographs is to capture architectural features and building materials.
- Measured drawings, including elevations, floor plans, and a site plan or survey, at an appropriate scale for the given application, indicating the context in which the heritage resource is situated
- Historical photos, drawings, or other archival material that may be available or relevant.

The applicant must provide a description of all relevant municipal or agency requirements which will be applied to the subject property, and when implemented may supplement, supersede and/or affect the conservation of heritage resources (i.e. Building Code requirements, Zoning requirements, Transportation and Works requirements.)

- 2.4 An outline of the proposed development, its context and how it will impact the heritage resource and neighbouring properties will be provided. This may include such issues as the pattern of lots,

roadways, setbacks, massing, relationship to natural and built heritage features, recommended building materials, etc. The outline should address the influence of the development on the setting, character and use of lands on the subject property and adjacent lands and its conformity with existing zoning. Any and all variances proposed for the property as related to the application project must be thoroughly reported and disclosed.

If the property forms part of a Heritage Conservation District (HCD), the proposal must be analysed in terms of its compliance with the HCD Plan.

Note: A measured architectural drawing indicating the subject property streetscape with properties to either side of the subject lands must be provided. The purpose of this drawing is to provide a schematic view of how the new construction is oriented and integrates with the adjacent properties from a streetscape perspective. The drawing must therefore show, within the limits of defined property lines, an outline of the building mass of the subject property and the existing neighbouring properties, along with significant trees or any other landscape or landform features. A composite photograph may accomplish the same purpose with a schematic of the proposed building drawn in.

- 2.5 Full architectural drawings, by a licensed architect or accredited architectural designer, showing all four elevations of the proposed development must be included for major alterations and new construction.
- 2.6 When trees are listed as a heritage attribute, and it is also required as part of the site plan process, an arborist report is required. Current property owner information must be redacted.
- 2.7 An assessment of alternative development options and mitigation measures that should be considered in order to avoid or limit the negative impact on the cultural heritage resources. Methods of minimizing or avoiding negative impact on a cultural heritage resource as stated in the Ontario Heritage Tool Kit (InfoSheet #5, Ministry of Culture) include, but are not limited to:
 - Alternative development approaches
 - Isolating development and site alteration from significant built and natural heritage features and vistas
 - Design guidelines that harmonize mass, setback, setting and materials
 - Limiting height and density
 - Allowing only compatible infill and additions
 - Reversible alterations
 - Buffer zones, site plan control, and other planning mechanisms

Provide mitigation measures, conservation methods, and/or alternative development options that avoid or limit the direct and indirect impacts to the heritage resources. Evaluate the advantages and disadvantages of each proposed mitigation measure.

These alternate forms of development options presented in the HIA must be evaluated and assessed by the heritage consultant writing the report as to the best option to proceed with and the reasons why that particular option has been chosen.

Provide recommendations for follow-up site specific heritage strategies or plans such as a conservation plan, adaptive reuse plan or heritage structural engineering assessment.

- 2.8 A summary of conservation principles and how they will be used must be included. The conservation principles may be found in publications such as: Parks Canada – *Standards and Guidelines for the Conservation of Historic Places in Canada*; *Eight Guiding Principles in the Conservation of Historic Properties*, Ontario Ministry of Culture. (Both publications are available online.)
- 2.9 Proposed demolition/alterations must be explained as to the loss of cultural heritage value interests in the site and the impact on the streetscape and sense of place.
- 2.10 When a property cannot be conserved, alternatives shall be considered for salvage mitigation. Only when other options can be demonstrated not to be viable will options such as relocation, ruinification, or symbolic conservation be considered.

Relocation of a heritage resource may indicate a move within or beyond the subject property. The appropriate context of the resource must be considered in relocation. Reunification allows for the exterior only of a structure to be maintained on a site. Symbolic conservation refers to the recovery of unique heritage resources and incorporating those components into new development, or using a symbolic design method to depict a theme or remembrance of the past.

All recommendations shall be as specific as possible indicating the exact location of the preferred option, site plan, building elevations, materials, landscaping, and any impact on neighbouring properties, if relevant.

3 Summary Statement and Conservation Recommendations

The summary should provide a full description of:

- The significance and heritage attributes of the cultural heritage resource, including the reference to a listing on the Heritage Register, or designation by-law if it is applicable
- The identification of any impact that the proposed development will have on the cultural heritage resource
- An explanation of what conservation or mitigative measures, or alternative development, or site alteration approaches are recommended
- Clarification as to why conservation or mitigative measures, or alternative development or site alteration approaches are not appropriate

4 Mandatory Recommendation

The heritage consultant must provide a recommendation as to whether the subject property is worthy of heritage designation in accordance with the heritage designation criteria per [Regulation 9/06, Ontario Heritage Act](#). Should the consultant not support heritage designation then it must be clearly stated as to why the subject property does not meet the criteria as stated in Regulation 9/06.

The following questions **must** be answered in the final recommendation of the report:

- Does the property meet the criteria for heritage designation under the Ontario Regulation 9/06, *Ontario Heritage Act*?
- If the subject property does not meet the criteria for heritage designation then it must be clearly stated as to why it does not
- Regardless of the failure to meet criteria for heritage designation, does the property warrant conservation as per the definition in the Provincial Policy Statement:

Conserved: means the identification, protection, management and use of built heritage resources, cultural heritage landscapes and archaeological resources in a manner that ensures their cultural heritage value or interest is retained. This may be achieved by the implementation of recommendations set out in a conservation plan, archaeological assessment and/or heritage impact assessment that has been approved, accepted or adopted by the relevant planning authority and/or decision-maker. Mitigative measures and/or alternative development approaches can be included in these plans and assessments.

Please note that failure to provide a clear recommendation as per the significance and direction of the identified cultural heritage resource will result in the rejection of the Heritage Impact Assessment.

5 Qualifications

The qualifications and background of the person completing the HIA will be included in the report. The author must be a qualified heritage consultant by having Professional standing with the Canadian Association of Heritage Professionals (CAHP) and/or clearly demonstrate, through a Curriculum Vitae, his/her experience in writing such Assessments or experience in the conservation of heritage places. The Assessment will also include a reference list for any literature cited, and a list of people contacted during the study and referenced in the report.

6 Approval Process

A pdf version will be provided to the Heritage Planning unit. City staff will review the HIA to determine whether all requirements have been met and, if relevant, to evaluate the recommendations presented by the Heritage Consultant on the alternative development options. The applicant will be notified of Staff's comments and acceptance, or rejection of the report. The HIA may be subject to a peer review by a qualified heritage consultant at the owner's expense.

All HIAs will be sent to the City's Heritage Advisory Committee for information or review. Reports will be published online.

An accepted HIA will become part of the further processing of a development application under the direction of the Planning and Building Department. The recommendations within the final approved version of the HIA will be incorporated into development related legal agreements between the City and the proponent at the discretion of the municipality.

7 References

Applicants seeking professional assistance may refer to the [Canadian Association of Heritage Professionals](#). For more information on Heritage Planning at the City of Mississauga, visit us [online](#). [Interpretation Services](#)

Appendix 2

Qualifications of the Author

OWEN R. SCOTT, OALA, FCSLA, CAHP

Education:

Master of Landscape Architecture (MLA) University of Michigan, 1967

Bachelor of Science in Agriculture (Landscape Horticulture), (BSA) University of Guelph, 1965

Professional Experience:

1965 - present President, CHC Limited, Guelph, ON

1977 - 2018 President, The Landplan Collaborative Ltd., Guelph, ON

1977 - 1985 Director, The Pacific Landplan Collaborative Ltd., Vancouver and Nanaimo, BC

1975 - 1981 Editor and Publisher, *Landscape Architecture Canada*, Ariss, ON

1969 - 1981 Associate Professor, School of Landscape Architecture, University of Guelph

1975 - 1979 Director and Founding Principal, Ecological Services for Planning Limited, Guelph, ON

1964 - 1969 Landscape Architect, Project Planning Associates Limited, Toronto, ON

Historical Research, Heritage Planning and Conservation Experience and Expertise

Current Professional and Professional Heritage Associations Affiliations:

Member: Alliance for Historic Landscape Preservation (AHLP) - 1978 -

Member: Canadian Association of Heritage Professionals (CAHP) - 1987 -

Member: Ontario Association of Landscape Architects (OALA) - 1968 - (Emeritus 2016)

Member: Canadian Society of Landscape Architects (FCSLA) - 1969 - (Fellow 1977, Life Member 2016)

Community and Professional Society Service (Heritage):

Director: Canadian Association of Heritage Professionals (CAHP), 2002 - 2003

Member: Advisory Board, Architectural Conservancy of Ontario, 1980 - 2002

Member: City of Guelph Local Architectural Conservation Advisory Committee (LACAC), 1987 - 2000 (Chair 1988 - 1990)

Member: Advisory Council, Centre for Canadian Historical Horticultural Studies, 1985 - 1988

Professional Honours and Awards (Heritage):

Merit Award 2016 Canadian Association of Heritage Professionals Awards, City of Kitchener Cultural Heritage Landscapes

National Award 2016 Canadian Society of Landscape Architects (CSLA), City of Kitchener Cultural Heritage Landscapes

Mike Wagner Award 2013 Heritage Award - Breithaupt Block, Kitchener, ON

People's Choice Award 2012 Brampton Urban Design Awards, Peel Art Gallery, Museum and Archives, Brampton, ON

Award of Excellence 2012 Brampton Urban Design Awards, Peel Art Gallery, Museum and Archives, Brampton, ON

National Award 2009 Heritage Canada Foundation National Achievement, Alton Mill, Alton, ON

Award of Merit 2009 Canadian Association of Heritage Professionals Awards, Alton Mill, Alton, ON

Award 2007 Excellence in Urban Design Awards, Heritage, Old Quebec Street, City of Guelph, ON

Award 2001 Ontario Heritage Foundation Certificate of Achievement

Award 1998 Province of Ontario, Volunteer Award (10 year award)

Regional Merit 1990 CSLA Awards, Britannia School Farm Master Plan

National Honour 1990 CSLA Awards, Confederation Boulevard, Ottawa

Citation 1989 City of Mississauga Urban Design Awards, Britannia School Farm Master Plan

Honour Award 1987 *Canadian Architect*, Langdon Hall Landscape Restoration, Cambridge, ON

Citation 1986 *Progressive Architecture*, The Ceremonial Routes (Confederation Boulevard), Ottawa,

National Citation 1985 CSLA Awards, Tipperary Creek Heritage Conservation Area Master Plan, Saskatoon, SK

National Merit 1984 CSLA Awards, St. James Park Victorian Garden, Toronto, ON

Award 1982 Ontario Ministry of Municipal Affairs Ontario Renews Awards, Millside, Guelph, ON

Selected Heritage Publications:

- Scott, Owen R., The Southern Ontario “Grid”, *ACORN* Vol XXVI-3, Summer 2001. *The Journal of the Architectural Conservancy of Ontario*.
- Scott, Owen R. *19th Century Gardens for the 20th and 21st Centuries*. Proceedings of “Conserving Ontario’s Landscapes” conference of the ACO, (April 1997). Architectural Conservancy of Ontario Inc., Toronto, 1998.
- Scott, Owen R. *Landscapes of Memories, A Guide for Conserving Historic Cemeteries*. (19 of 30 chapters) compiled and edited by Tamara Anson-Cartright, Ontario Ministry of Citizenship, Culture and Recreation, 1997.
- Scott, Owen R. Cemeteries: A Historical Perspective, *Newsletter, The Memorial Society of Guelph*, September 1993.
- Scott, Owen R. The Sound of the Double-bladed Axe, *Guelph and its Spring Festival*. edited by Gloria Dent and Leonard Conolly, The Edward Johnson Music Foundation, Guelph, 1992. 2 pp.
- Scott, Owen R. Woolwich Street Corridor, Guelph, *ACORN* Vol XVI-2, Fall 1991. Newsletter of the Architectural Conservancy of Ontario Inc. (ACO)
- Scott, Owen R. guest editor, *ACORN*, Vol. XIV-2, Summer 1989. Cultural Landscape Issue, Newsletter of the ACO.
- Scott, Owen R. Heritage Conservation Education, Heritage Landscape Conservation, *Momentum 1989*, Icomos Canada, Ottawa, p.31.
- Scott, Owen R. Cultivars, pavers and the historic landscape, *Historic Sites Supplies Handbook*. Ontario Museum Association, Toronto, 1989. 9 pp.
- Scott, Owen R. Landscape preservation - What is it? *Newsletter, American Society of Landscape Architects - Ontario Chapter*, vol. 4 no.3, 1987.
- Scott, Owen R. Tipperary Creek Conservation Area, Wanuskewin Heritage Park. *Landscape Architectural Review*, May 1986. pp. 5-9.
- Scott, Owen R. Victorian Landscape Gardening. Ontario Bicentennial History Conference, McMaster University, 1984.
- Scott, Owen R. Canada West Landscapes. *Fifth Annual Proceedings Niagara Peninsula History Conference (1983)*. 1983. 22 pp.
- Scott, Owen R. Utilizing History to Establish Cultural and Physical Identity in the Rural Landscape. *Landscape Planning*, Elsevier Scientific Press, Amsterdam, 1979. Vol. 6, No. 2, pp. 179-203.
- Scott, Owen R. Changing Rural Landscape in Southern Ontario. *Third Annual Proceedings Agricultural History of Ontario Seminar (1978)*. June 1979. 20 pp.
- Scott, Owen R., P. Grimwood, M. Watson. George Laing - Landscape Gardener, Hamilton, Canada West 1808-1871. *Bulletin, The Association for Preservation Technology*, Vol. IX, No. 3, 1977, 13 pp. (also published in *Landscape Architecture Canada*, Vol. 4, No. 1, 1978).
- Scott, Owen R. The Evaluation of the Upper Canadian Landscape. Department of Landscape Architecture, University of Manitoba. 1978. (Colour videotape).

Following is a **representative listing of some of the heritage consultations undertaken by Owen R. Scott** in his capacity as a principal of The Landplan Collaborative Ltd., and principal of CHC Limited.

Cultural Heritage Evaluation Reports & Heritage Impact Assessments - Bridges

- Adams Bridge (Structure S20) Cultural Heritage Evaluation Report & Heritage Impact Assessment, Southgate Township, ON
- Belanger Bridge Cultural Heritage Evaluation Report & Heritage Impact Assessment, Casey Township, ON
- Bridge #9-WG Cultural Heritage Evaluation Report & Heritage Impact Assessment, Township of Centre Wellington, ON
- Bridge #20 Cultural Heritage Evaluation Report & Heritage Impact Assessment, Blandford-Blenheim Township, ON
- Bridge #24 Cultural Heritage Evaluation Report & Heritage Impact Assessment, Blandford-Blenheim Township, ON
- Bridge #25 Cultural Heritage Evaluation Report & Heritage Impact Assessment, Blandford-Blenheim Township, ON
- Bridge Street Bridge Cultural Heritage Evaluation Report & Heritage Impact Assessment, Wilmot Township, ON
- Holland Mills Road Bridge Cultural Heritage Evaluation Report & Heritage Impact Assessment, Wilmot Township, ON
- Irvine Street (Watt) Bridge Cultural Heritage Evaluation Report & Heritage Impact Assessment, Township of Centre Wellington, ON
- Oxford-Waterloo Bridge Cultural Heritage Evaluation Report & Heritage Impact Assessment, Wilmot Township, ON
- Uno Park Road Bridge, Cultural Heritage Evaluation Report & Heritage Impact Assessment, Harley Township, ON

Heritage Master Plans and Landscape Plans

- Alton Mill Landscape, Caledon, ON
- Black Creek Pioneer Village Master Plan, Toronto, ON
- Britannia School Farm Master Plan, Peel Board of Education/Mississauga, ON

- Confederation Boulevard (Sussex Drive) Urban Design, Site Plans, NCC/Ottawa, ON
- Doon Heritage Crossroads Master Plan and Site Plans, Region of Waterloo/Kitchener, ON
- Downtown Guelph Private Realm Improvements Manual, City of Guelph, ON
- Downtown Guelph Public Realm Plan, City of Guelph, ON
- Dundurn Castle Landscape Restoration Feasibility Study, City of Hamilton, ON
- Elam Martin Heritage Farmstead Master Plan, City of Waterloo, ON
- Exhibition Park Master Plan, City of Guelph, ON
- George Brown House Landscape Restoration, Toronto, ON
- *Grand River Corridor Conservation Plan*, GRCA/Regional Municipality of Waterloo, ON
- Greenwood Cemetery Master Plan, Owen Sound, ON
- Hamilton Unified Family Courthouse Landscape Restoration Plan, Hamilton, ON
- John Galt Park, City of Guelph, ON
- Judy LaMarsh Memorial Park Master Plan, NCC/Ottawa, ON
- Langdon Hall Gardens Restoration and Site Plans, Cambridge, ON
- London Psychiatric Hospital Cultural Heritage Stewardship Plan, London, ON
- McKay / Varley House Landscape Restoration Plan, Markham (Unionville), ON
- Museum of Natural Science/Magnet School 59/ Landscape Restoration and Site Plans, City of Buffalo, NY
- Muskoka Pioneer Village Master Plan, MNR/Huntsville, ON
- Peel Heritage Centre Adaptive Re-use, Landscape Design, Brampton, ON
- Phyllis Rawlinson Park Master Plan (winning design competition), Town of Richmond Hill, ON
- Prime Ministerial Precinct and Rideau Hall Master Plan, NCC/Ottawa, ON
- Queen/Picton Streets Streetscape Plans, Town of Niagara-on-the-Lake, ON
- Regional Heritage Centre Feasibility Study and Site Selection, Region of Waterloo, ON
- Rockway Gardens Master Plan, Kitchener Horticultural Society/City of Kitchener, ON
- St. George's Square, City of Guelph, ON
- St. James Cemetery Master Plan, Toronto, ON
- St. James Park Victorian Garden, City of Toronto, ON
- Tipperary Creek (Wanuskewin) Heritage Conservation Area Master Plan, Meewasin Valley Authority, Saskatoon, SK
- Whitehern Landscape Restoration Plan, Hamilton, ON
- Woodside National Historic Park Landscape Restoration, Parks Canada/Kitchener, ON

Cultural Heritage Evaluation Reports (CHER), Cultural Heritage Inventories and Cultural Heritage Landscape Evaluations

- Belfountain Area Heritage Inventory for Environmental Assessment, Peel Region, ON
- Chappell Estate / Riverside / Mississauga Public Garden Heritage Inventory, Mississauga, ON
- 8895 County Road 124 Cultural Heritage Opinion Report, Erin (Ospringle), ON
- County of Waterloo Courthouse Building Cultural Heritage Evaluation Report, Kitchener, ON
- Cruickston Park Farm & Cruickston Hall - Cultural Heritage Resources Study, Cambridge, ON
- Doon Valley Golf Course - Cultural Heritage and Archaeological Resources Inventory, Kitchener/Cambridge, ON
- Government of Ontario Light Rail Transit (GO-ALRT) Route Selection, Cultural and Natural Resources Inventory for Environmental Assessment, Hamilton/Burlington, ON
- Hancock Woodlands Cultural Heritage Assessment, City of Mississauga, ON
- Hespeler West Secondary Plan - Heritage Resources Assessment, City of Cambridge, ON
- Highway 400 to 404 Link Cultural Heritage Inventory for Environmental Assessment, Bradford, ON
- Highway 401 to 407 Links Cultural Heritage Inventory for Environmental Assessment, Pickering/Ajax/Whitby/ Bowmanville, ON
- Homer Watson House Cultural Heritage Evaluation Report, Kitchener, ON
- Lakewood Golf Course Cultural Landscape Assessment, Tecumseh, ON
- Landfill Site Selection, Cultural Heritage Inventory for Environmental Assessment, Region of Halton, ON
- 960 Nashville Road Cultural Heritage Evaluation Report, City of Vaughan (Nashville), ON
- Niska Road Cultural Heritage Landscape Addendum, City of Guelph, ON
- 180-B Nith River Way Cultural Heritage Evaluation Report, Ayr, ON
- 154 Ontario Street, Historical - Associative Evaluation, Guelph, ON
- 35 Sheldon Avenue North, Cultural Heritage Evaluation Report, Kitchener, ON
- 43 Sheldon Avenue North, Cultural Heritage Evaluation Report, Kitchener, ON
- Silvercreek (LaFarge Lands) Cultural Landscape Assessment, Guelph, ON

- South Kitchener Transportation Study, Heritage Resources Assessment, Region of Waterloo, ON
- 53 Surrey Street East and 41, 43, 45 Wyndham Street South Cultural Heritage Evaluation Guelph, ON
- Swift Current CPR Station Gardens condition report and feasibility study for rehabilitation/reuse, Swift Current, SK
- University of Guelph, McNaughton Farm House, Cultural Heritage Resource Assessment, Puslinch Township, ON
- University of Guelph, Trent Institute Cultural Heritage Resource Assessment, Guelph, ON
- University of Guelph, 1 and 10 Trent Lane Cultural Heritage Resource Assessments, Guelph, ON
- 2007 Victoria Road South Heritage Evaluation, Guelph, ON
- Waterloo Valleylands Study, Heritage and Recreational Resources mapping and policies, Region of Waterloo
- 69 Woolwich Street (with references to 59, 63-67, 75 Woolwich Street) Cultural Heritage Evaluation Report, Guelph, ON

Cultural Heritage Resource Impact Assessments (CHRIA/CHIA/HIS/HIA) and Cultural Landscape Heritage Impact Statements

- 2972 Alps Road Heritage Impact Assessment, Ayr, ON
- 33 Arkell Road Heritage Impact Assessment, Guelph, ON
- 86 Arthur Street, Heritage Impact Assessment, Guelph, ON
- William Barber House, 5155 Mississauga Road , Heritage Impact Assessment, Mississauga, ON
- Barra Castle Heritage Impact Assessment, Kitchener, ON
- 41 Bastien Street, Scoped Cultural Heritage Impact Assessment, Cambridge, ON
- 72 Beaumont Crescent Heritage Impact Assessment, Guelph, ON
- Biltmore Hat Factory Heritage Impact Assessment, Guelph, ON
- 1385 Bleams Road Heritage Impact Assessment, Addendum & 2nd Addendum, Kitchener, ON
- 140 Blue Heron Ridge Heritage Impact Assessment, Cambridge, ON
- 25 Breithaupt Street Heritage Impact Assessment, Kitchener, ON
- 51 Breithaupt Street Heritage Impact Assessment, Kitchener, ON
- 215 Broadway Street Heritage Impact Statement, Mississauga, ON
- Cambridge Retirement Complex on the former Tiger Brand Lands, Heritage Impact Assessment, Cambridge, ON
- Cambridge Retirement Complex on the former Tiger Brand Lands, Heritage Impact Assessment Addendum, Cambridge, ON
- 27-31 Cambridge Street, Heritage Impact Assessment, Cambridge, ON
- 3075 Cawthra Road Heritage Impact Statement, Mississauga, ON
- 58 Church Street Heritage Impact Assessment, Churchville Heritage Conservation District, Brampton, ON
- City Centre Heritage Impact Assessment, Kitchener, ON
- 175 Cityview Drive Heritage Impact Assessment, Guelph, ON
- 12724 Coleraine Drive Cultural Heritage Impact Statement, Caledon (Bolton), ON
- 12880 Coleraine Drive Cultural Heritage Impact Statement, Caledon (Bolton), ON
- Cordingly House Heritage Impact Statement, Mississauga, ON
- 264 Crawley Road Heritage Impact Assessment (farmstead, house & barn), Guelph, ON
- 31-43 David Street (25 Joseph Street) Heritage Impact Assessment, Kitchener, ON
- 35 David Street (Phase II) Heritage Impact Assessment, Kitchener, ON
- 75 Dublin Street Heritage Impact Assessment, Guelph, ON
- 24, 26, 28 and 32 Dundas Street East Heritage Impact Statement, Mississauga, (Cooksville), ON
- 1261 Dundas Street South Heritage Impact Assessment, Cambridge, ON
- 172 - 178 Elizabeth Street Heritage Impact Assessment, Guelph, ON
- 19 Esandar Drive, Heritage Impact Assessment, Toronto, ON
- 70 Fountain Street Cultural Heritage Impact Assessment, Guelph, ON
- 14 Forbes Avenue Heritage Impact Assessment, Guelph, ON
- 369 Frederick Street Heritage Impact Assessment, Kitchener, ON
- 42 Front Street South Heritage Impact Assessment, Mississauga, ON
- 1654 Glenburnie Drive, Heritage Impact Assessment, Mississauga, ON
- Grey Silo Golf Course/Elam Martin Farmstead Heritage Impact Assessment, City of Waterloo, ON
- GRCA Lands, 748 Zeller Drive Heritage Impact Assessment Addendum, Kitchener, ON
- Hancock Woodlands Heritage Impact Statement, City of Mississauga, ON
- 132 Hart's Lane, Hart Farm Heritage Impact Assessment, Guelph, ON
- 11 Irvin Street, Heritage Impact Assessment, Kitchener, ON
- 9675, 9687, 9697 Keele Street Heritage Impact Assessment, City of Vaughan (Maple) ON
- 13165 Keele Street Cultural Heritage Resource Impact Assessment, King Township (King City), ON
- 151 King Street North Heritage Impact Assessment, Waterloo, ON

- 4924 King Street Heritage Impact Assessment, Beamsville, ON
- Kip Co. Lands Developments Ltd. Cultural Heritage Resource Impact Assessment - Woodbridge Heritage Conservation District, City of Vaughan (Woodbridge) ON
- 20415 Leslie Street Heritage Impact Assessment, East Gwillimbury, ON
- 117 Liverpool Street Heritage Impact Assessment, Guelph, ON
- 36-46 Main Street Heritage Impact Assessment, Mississauga, ON
- 30 - 40 Margaret Avenue Heritage Impact Assessment, Kitchener, ON
- 19 - 37 Mill Street Scoped Heritage Impact Assessment, Kitchener, ON
- 1376 Mississauga Road, Cultural Landscape Heritage Impact Statement addendum, Mississauga, ON
- 2610, 2620 and 2630 Mississauga Road, Cultural Landscape Heritage Impact Statement, Mississauga, ON
- 4067 Mississauga Road, Cultural Landscape Heritage Impact Statement, Mississauga, ON
- 1142 Mona Road, Heritage Impact Assessment, Mississauga, ON
- 1245 Mona Road, Heritage Impact Statement, Mississauga, ON
- 15 Mont Street, Heritage Impact Assessment, Guelph, ON
- Proposed Region of Waterloo Multimodal Hub at 16 Victoria Street North, 50 & 60 Victoria Street North, and 520 & 510 King Street West, Heritage Study and Heritage Impact Assessment, Kitchener, ON
- 89 and 99 Nashville Road Heritage Impact Assessment, City of Vaughan (Kleinburg), ON
- 6671 Ninth Line Heritage Impact Statement, Cordingley House Restoration & Renovation, Mississauga, ON
- 266-280 Northumberland Street (The Gore) Heritage Impact Assessment, North Dumfries (Ayr), ON
- 30 Oakdale Avenue, Heritage Impact Assessment, St. Catharines, ON
- 324 Old Huron Road Heritage Impact Assessment, Kitchener, ON
- 15, 19, 23 & 27 Pearl Street, Heritage Impact Assessment, Mississauga (Streetsville), ON
- 40 Queen Street South Heritage Impact Statement, Mississauga, (Streetsville), ON
- Rockway Holdings Limited Lands north of Fairway Road Extension Heritage Impact Assessment, Kitchener, ON
- 259 St. Andrew Street East Cultural Heritage Assessment, Fergus, ON
- 968 St. David Street North & 6581 Highway 6, Heritage Impact Assessment, Centre Wellington (Fergus), ON
- 43 Sheldon Avenue North, Heritage Impact Assessment, Kitchener, ON
- 35 & 43 Sheldon Avenue North, Heritage Impact Assessment, Kitchener, ON
- 1720 Sherwood Forrest Circle Heritage Impact Assessment, Mississauga, ON
- 2300 Speakman Drive Heritage Impact Assessment, Mississauga, ON
- 10431 The Gore Road Heritage Impact Assessment, Brampton, ON
- 18, 20, 30 & 34 Thomas Street, Streetsville Heritage Impact Assessment, Mississauga, ON
- Thorny-Brae Heritage Impact Statement, Mississauga, ON
- 7 Town Crier Lane, Heritage Impact Assessment, Markham, ON
- University of Guelph, 3 - 7 Gordon Street Houses, Heritage Impact Assessment, Guelph, ON
- University of Guelph, Harrison House, Heritage Impact Assessment, Guelph, ON
- Victoria Park Proposed Washroom Cultural Heritage Impact Assessment, Kitchener, ON
- 927 Victoria Road South (barn) Heritage Impact Assessment, Guelph, ON
- 85 Victoria Street Heritage Impact Assessment, Churchville Heritage Conservation District, Brampton, ON
- 272-274 Victoria Street Heritage Impact Assessment, Mississauga, ON
- 26 - 32 Water Street North Heritage Impact Assessment, Cambridge (Galt), ON
- Winzen Developments Heritage Impact Assessment, Cambridge, ON
- 248-260 Woodbridge Avenue Cultural Heritage Resource Impact Assessment, Woodbridge Heritage Conservation District, City of Vaughan (Woodbridge)
- 35 Wright Street Cultural Heritage Resource Impact Assessment, Richmond Hill, ON
- 1123 York Road Heritage Impact Assessment, Guelph, ON
- 14288 Yonge Street, Heritage Impact Assessment, Aurora, ON

Heritage Conservation Plans

- William Barber House, 5155 Mississauga Road , Heritage Conservation Plan, Mississauga, ON
- 1385 Bleams Road Heritage Conservation Plan, Kitchener, ON
- 51 Breithaupt Street Heritage Conservation Plan, Kitchener, ON
- Hamilton Psychiatric Hospital Conservation Plan, for Infrastructure Ontario, Hamilton, ON
- Harrop Barn Heritage Conservation Plan, Milton, ON
- 120 Huron Street Conservation Plan, Guelph, ON

- 324 Old Huron Road Conservation Plan, Kitchener, ON
- Sixth Line Cultural Heritage Landscape Conservation Plan, Oakville, ON
- 264 Woolwich Street Heritage Conservation Plan, Guelph, ON
- 14288 Yonge Street Heritage Conservation Plan, Aurora, ON
- 1123 York Road Heritage Conservation Plan, Guelph, ON

Heritage Conservation District Studies and Plans and Conformity Reports

- Review and Critique of Brooklyn and College Hill Heritage Conservation District Study Plan and Guidelines, Guelph, ON
- Downtown Whitby Heritage Conservation District Study and Plan, Town of Whitby, ON
- MacGregor/Albert Heritage Conservation District Study and Plan, City of Waterloo, ON
- Queen Street East Heritage Conservation District Study, Toronto, ON
- University of Toronto & Queen's Park Heritage Conservation District Study, City of Toronto, ON
- 10680 Islington Avenue Heritage Conservation District Conformity Report, City of Vaughan, (Kleinburg) ON
- 248-260 Woodbridge Avenue Heritage Conservation District Conformity Report, Woodbridge Heritage Conservation District, City of Vaughan (Woodbridge)

Cultural Heritage Landscape Inventories/Studies

- Cultural Heritage Landscape Study, City of Kitchener, ON
- Cultural Heritage Landscape Inventory, City of Mississauga, ON
- Cultural Heritage Scoping Study, Township of Centre Wellington, ON

Peer Reviews

- Acton Quarry Cultural Heritage Landscape & Built Heritage Study & Assessment Peer Review, Acton, ON
- Belvedere Terrace - Peer Review, Assessment of Proposals for Heritage Property, Parry Sound, ON
- Forbes Estate Heritage Impact Assessment Peer Review, Cambridge (Hespeler), ON
- Heritage Square Heritage Impact Assessment Peer Review for Township of Centre Wellington (Fergus), ON
- Little Folks Heritage Impact Assessment Peer Review for Township of Centre Wellington (Elora), ON
- Potter Foundry and the Elora South Condos Heritage Impact Assessment Peer Review for Township of Centre Wellington (Elora), ON
- Tytler School for the Upper Grand District School Board, (Part IV Designation proposal), Guelph, ON
- 558 Welbanks Road, Quinte's Isle, miscellaneous heritage assessment documents, Prince Edward County, ON

Expert Witness Experience

- Oelbaum Ontario Municipal Board Hearing, Eramosa Township, ON, 1988
- Roselawn Centre Conservation Review Board Hearing, Port Colborne, ON, 1993
- Halton Landfill, Joint Environmental Assessment Act and Environmental Protection Act Board Hearing, 1994
- OPA 129 Ontario Municipal Board Hearing, Richmond Hill, ON, 1996
- Diamond Property Ontario Municipal Board Hearing, Aurora, ON, 1998
- Harbour View Investments Ontario Municipal Board Hearing, Town of Caledon, ON, 1998
- Aurora South Landowners Ontario Municipal Board Hearing, Aurora, ON, 2000
- Ballycrooy Golf Course Ontario Municipal Board Hearing, Palgrave, ON, 2002
- Doon Valley Golf Course Ontario Municipal Board Hearing, Cambridge, ON, 2002
- Maple Grove Community Ontario Municipal Board Hearing, North York, ON, 2002
- Maryvale Crescent Ontario Municipal Board Hearing, Richmond Hill, ON, 2003
- LaFarge Lands Ontario Municipal Board Mediation, Guelph, ON, 2007
- 255 Geddes Street, Elora, ON, heritage opinion evidence - Ontario Superior Court of Justice, 2010
- Downey Trail Ontario Municipal Board Hearing, Guelph, ON, 2010
- Wilson Farmhouse Conservation Review Board Hearing, Guelph, ON, 2014
- 85 Victoria Street, Churchville Heritage Conservation District, Ontario Municipal Board Hearing, Brampton, ON, 2016
- Haylock / Youngblood Development OMB Mediation Hearing, Centre Wellington, ON, 2018
- Riverbank Drive LPAT Mediation Hearing, Cambridge, ON, 2019
- 50 Brookside Drive Ontario Land Tribunal Hearing, Kitchener, ON, 2021
- 70 Fountain Street, Skydevco Ontario Land Tribunal Hearing, Guelph, ON, 2022