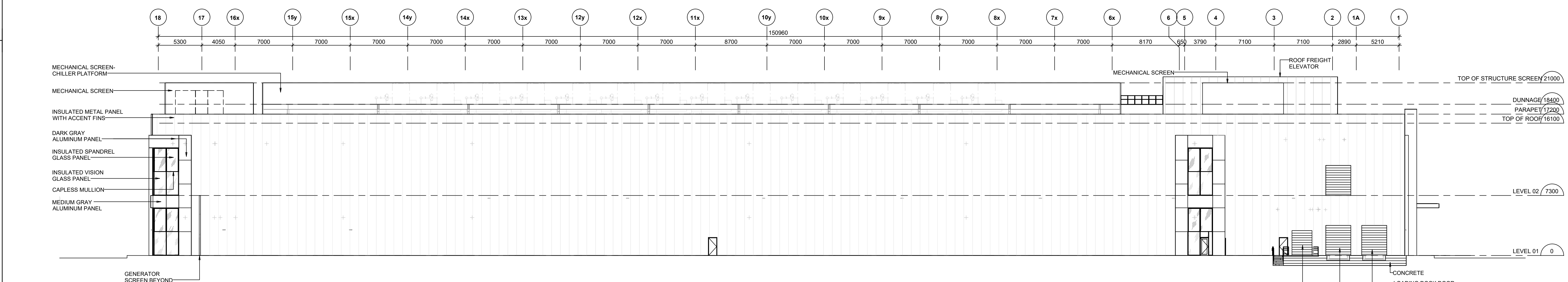
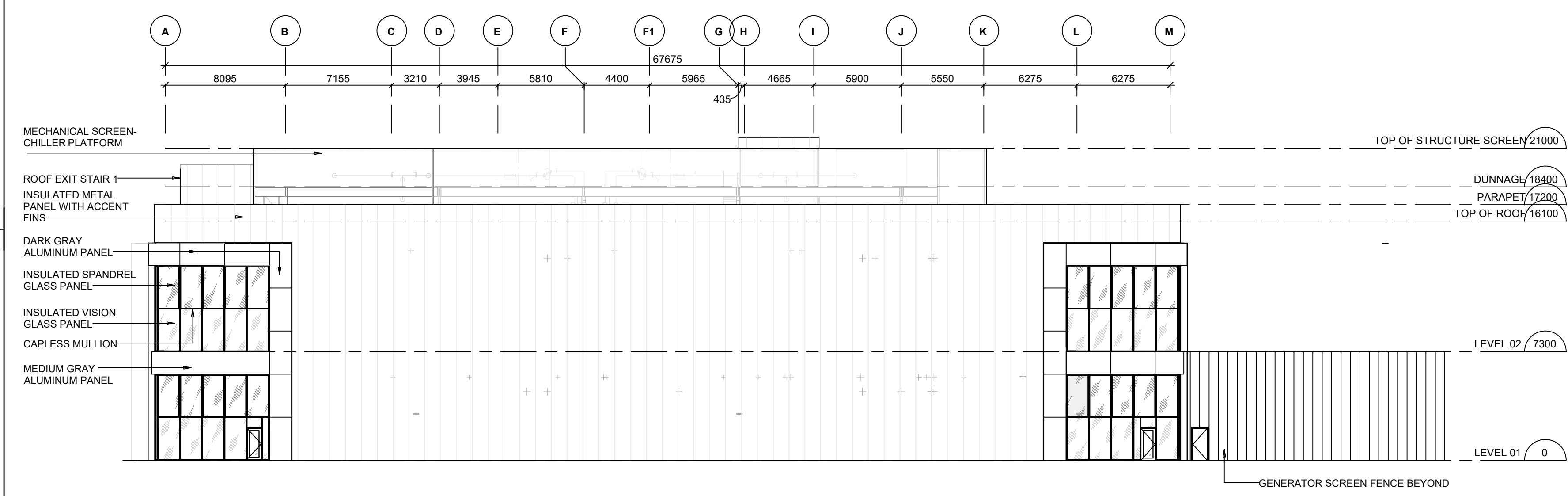


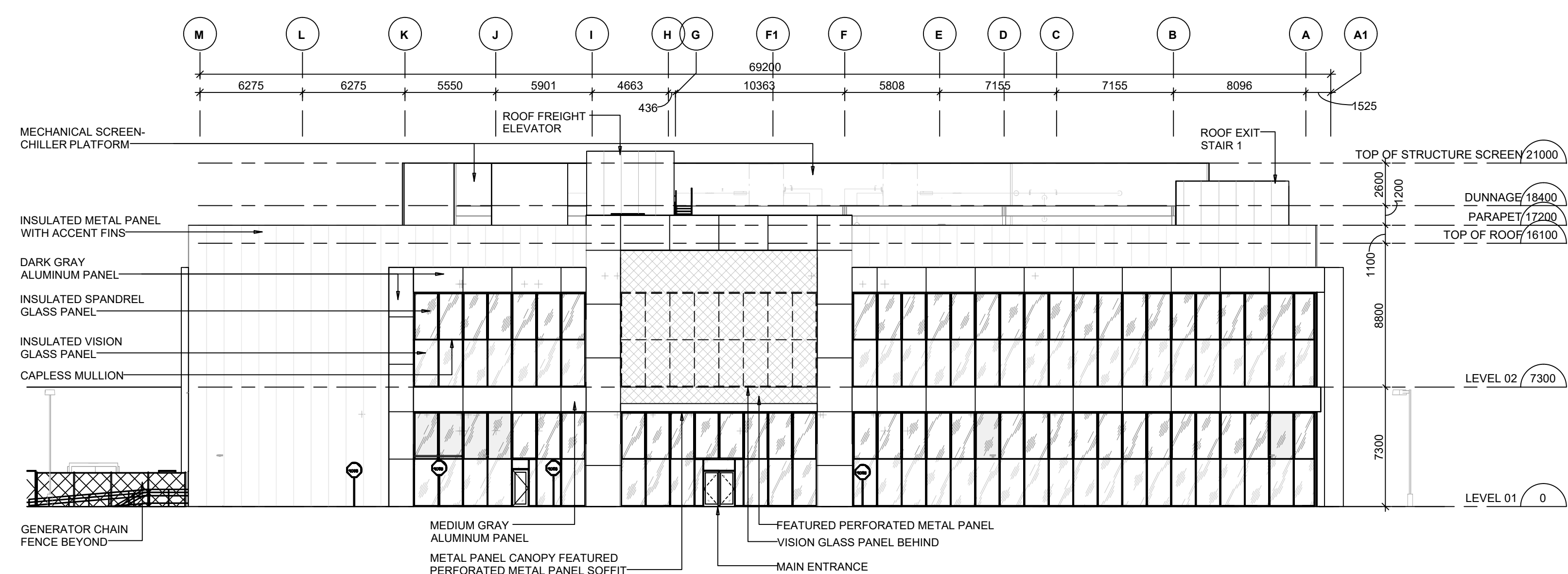
4 BUILDING ELEVATION - SOUTH
A400 1:200



3 BUILDING ELEVATION - NORTH
A400 1:200



2 BUILDING ELEVATION - EAST
A400 1:200



1 BUILDING ELEVATION - WEST
A400 1:200

EXTERIOR ELEVATION LEGEND

- GL-1:1 DOUBLE GLAZED INSULATED VISION PANEL
- GL-1:2 DOUBLE GLAZED INSULATED SPANDREL PANEL
- MET-1:1 INSULATED METAL PANEL (IMP)
- MET-2:1 ACCENT METAL FIN
- MET-3:1 ACCENT COLOUR METAL FIN
- MET-4:1 PREFINISHED PREFORMED METAL CLADDING
- MET-5:1 CHILLER PLATFORM SCREEN
- MET-6:1 PREFINISHED METAL BASE FLASHING AT MET-1 AND TYP. CAP FLASHING
- LVF-1:1 ARCHITECTURAL PREFINISHED LOUVER

PROJECT LOCATION

LEGAL DESCRIPTION

FOR LEGAL SURVEY INFORMATION REFER TO:
PART OF LOT 14
CONCESSION 10, NEW SURVEY
GEOGRAPHIC TOWNSHIP OF TRAFALGAR
CITY OF MISSISSAUGA
REGIONAL MUNICIPALITY OF PEELE
PREPARED BY GENESIS LAND SURVEYING INC.,
10 FOUR SEASONS PLACE, 10TH FLOOR,
TORONTO, ON M9B 6H7 DATED OCTOBER 16, 2024.

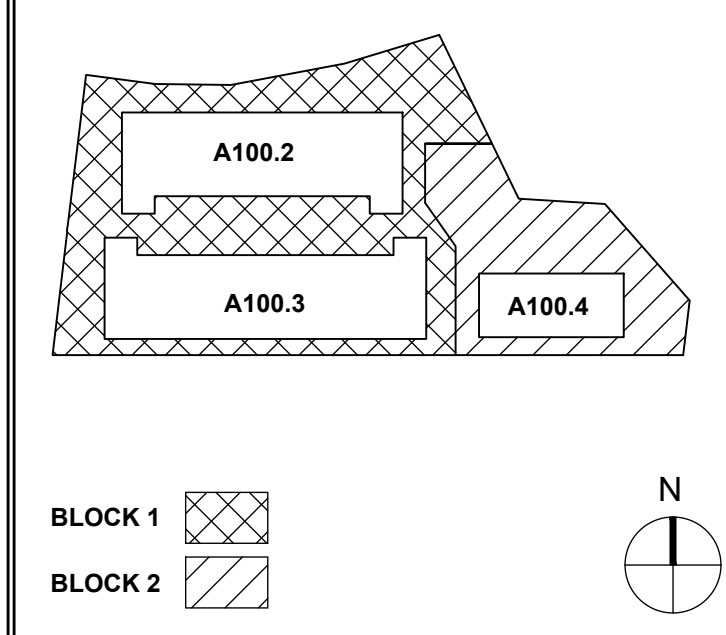
SITE SPECIFIC ZONING TO BE VERIFIED UPON CONSULTATION WITH CITY OF MISSISSAUGA. LAYOUT IS SUBJECT TO IMPLEMENTATION OF ENVIRONMENTAL, STORM WATER MANAGEMENT, ETC. REQUIREMENTS UPON CONSULTATION WITH AUTHORITIES HAVING JURISDICTION.

ADDITIONAL SITE WORKS

NOTE:
FOR LANDSCAPE AND SITE FURNITURE INFORMATION, REFER TO DRAWINGS BY MHC LANDSCAPE.
FOR GRADING AND SERVICING INFORMATION, REFER TO DRAWINGS BY MTE CONSULTANTS.
FOR SITE PHOTOMETRIC AND ELECTRICAL INFORMATION, REFER TO DRAWINGS BY HAMMERSCHLAG & JOFFE.
FOR TRAFFIC SIGNAGE AND DESIGN REFER TO DRAWINGS BY TYLIN.

NOTE:
FIRE ACCESS ROUTE TO BE DESIGNED TO SUPPORT A LOAD OF NOT LESS THAN 1,363 KG PER AXLE AND HAVE A CHANGE IN GRADIENT OF NOT MORE THAN 1 IN 12.5 OVER A MINIMUM DISTANCE OF 15M. ROUTE TO BE DESIGNATED AS PER BYLAW 1036-81

KEY PLAN



REV #	DATE	REVISION TITLE
1	AUG 15, 2025	ISSUED FOR SPA
2	MAR 4, 2026	ISSUED FOR SPA

PROJECT NO: 25026 00
DRAWN BY: TY
CHECKED BY: RCB
NOT RELEASED FOR CONSTRUCTION
RELEASED FOR CONSTRUCTION

00 TENTH LINE WEST, MISSISSAUGA, ON
TOR000394
INDUSTRIAL DEVELOPMENT

Prologis Inc. (Canada)
185 The West Mall, Suite 700, Toronto
647-258-2600
Tony Nguyen: tnguyen4@prologis.com
https://www.prologis.com

SHEET TITLE:
EXTERIOR ELEVATIONS DATA CENTRE

SEAL: SHEET NO. **A.400**