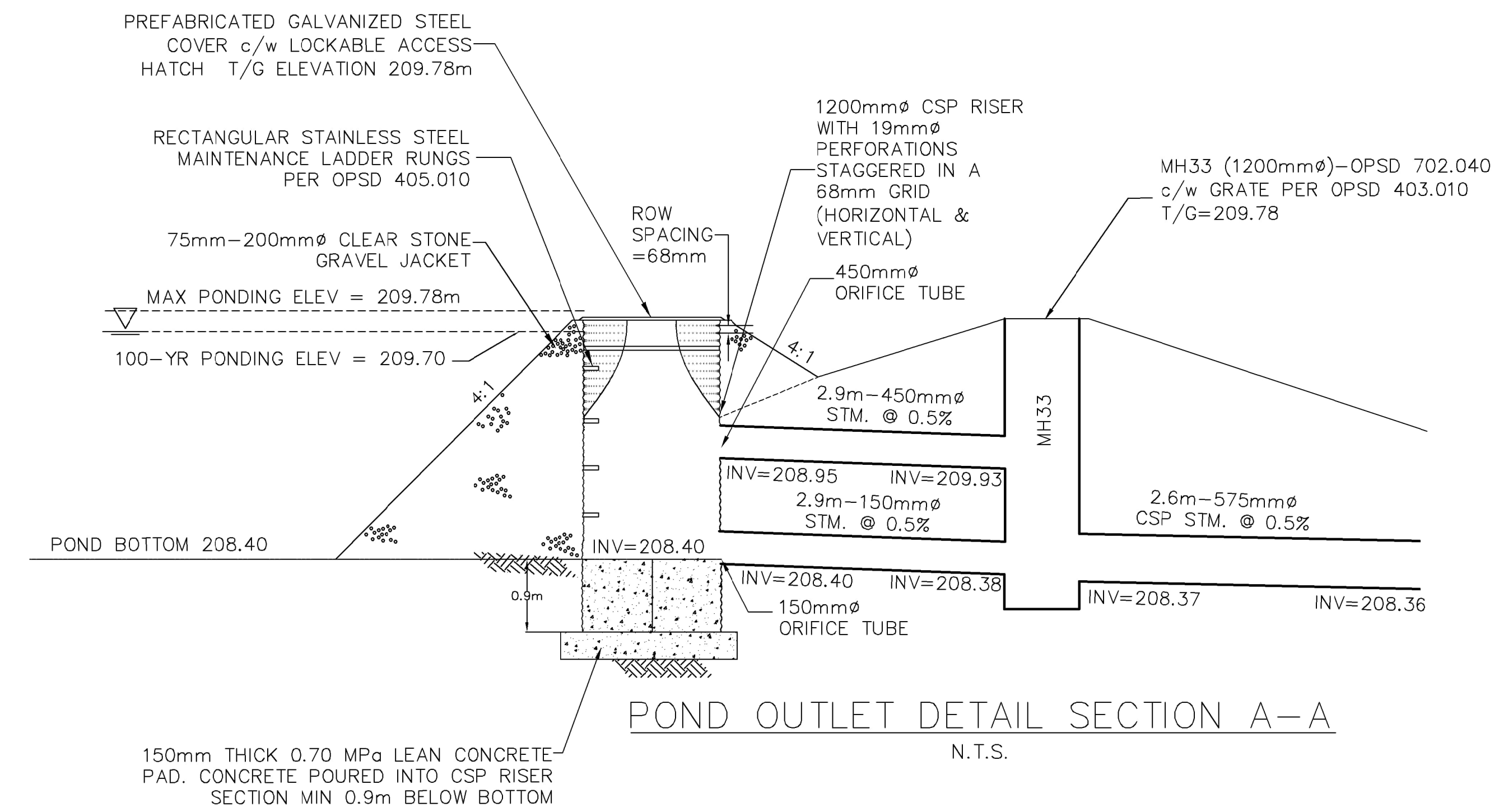
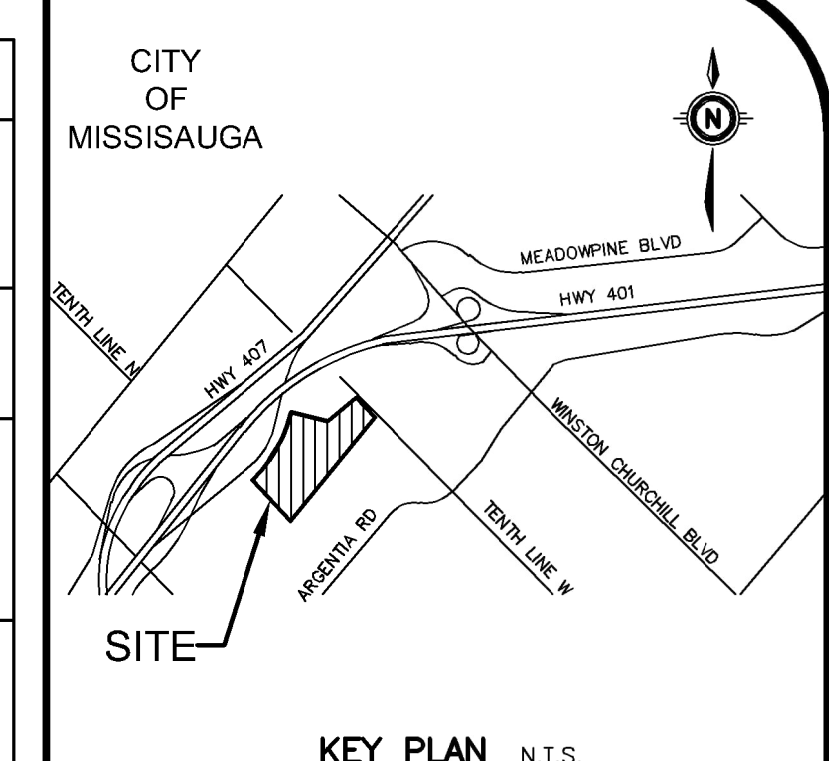


NOTES TO CONTRACTOR:

- INSPECTION:** CONTRACTOR IS RESPONSIBLE FOR CONTACTING ENGINEER & CITY INSPECTION STAFF 48 HRS PRIOR TO COMMENCING WORK TO ARRANGE FOR INSPECTION & OFF-SITE WORKS. ENGINEER TO DETERMINE DEGREE OF INSPECTION AND TESTING REQUIRED FOR CERTIFICATION OF UNDERGROUND SERVICE INSTALLATION AS MANDATED BY ONTARIO BUILDING CODE (PART 1) SECTION 1.2.2. GENERAL REVIEW FAILURE TO NOTIFY ENGINEER WILL RESULT IN EXTENSIVE POST CONSTRUCTION INSPECTION AT CONTRACTOR'S EXPENSE.
- CONFIRMATION OF EXISTING INVERTS:** 72 HOURS PRIOR TO THE START OF CONSTRUCTION, THE CONTRACTOR IS TO LOCATE, EXPOSE AND VERIFY INVERTS OF EXISTING SEWERS AT CONNECTION POINTS AND REPORT FINDINGS TO M.T.E. SHOULD THE CONTRACTOR PROCEED WITHOUT COMPLETING THESE TASKS, EXTRA COSTS RESULTING FROM DELAYS AND STANDBY TIME WILL NOT BE CONSIDERED.



SEWER CROSSING CHART				
CROSSING #	SEWER TYPE	SEWER SIZE (mm)	CROSSING ELEVATION	NOTES
X18	SAN	150	TOP=209.97	MAINTAIN MIN. 0.3m VERTICAL SEPARATION
	STM	250	BOT=209.40	
X19	SAN	150	TOP=209.03	MAINTAIN MIN. 0.3m VERTICAL SEPARATION
	WTM	250	BOT=210.01	
X20	STM	250	TOP=209.58	MAINTAIN MIN. 0.3m VERTICAL SEPARATION
	WTM	150	BOT=210.06	
X21	STM	250	TOP=209.23	MAINTAIN MIN. 0.3m VERTICAL SEPARATION
	WTM	150	BOT=209.93	
X22	STM	525	TOP=209.33	MAINTAIN MIN. 0.3m VERTICAL SEPARATION
	WTM	250	BOT=209.83	
X23	WTM	300	TOP=209.37	MAINTAIN MIN. 0.3m VERTICAL SEPARATION. CONTRACTOR TO DEFLECT WTM BELOW STM USING 4 - 45 DEG VERTICAL BENDS.
	STM	600	BOT=208.67	
X24	WTM	200	TOP=209.05	MAINTAIN MIN. 0.3m VERTICAL SEPARATION. CONTRACTOR TO DEFLECT WTM BELOW STM USING 4 - 45 DEG VERTICAL BENDS.
	STM	300	BOT=209.35	
X25	WTM	250	TOP=209.10	MAINTAIN MIN. 0.3m VERTICAL SEPARATION. CONTRACTOR TO DEFLECT WTM BELOW STM USING 4 - 45 DEG VERTICAL BENDS.
	STM	300	BOT=209.40	
X26	WTM	250	TOP=209.31	MAINTAIN MIN. 0.3m VERTICAL SEPARATION. CONTRACTOR TO DEFLECT WTM BELOW STM USING 4 - 45 DEG VERTICAL BENDS.
	STM	300	BOT=209.61	



KEY PLAN N.T.S.

GEODEIC BENCHMARK ELEV. = 208.076m
ELEVATIONS ARE REFERRED TO THE CITY OF MISSISSAUGA BENCHMARK No. 1043, LOCATED AT THE BASE OF A 750mm CONCRETE TRAFFIC POLE AT THE SOUTH-WEST CORNER OF ARGENTIA ROAD AND PLAZA ENTRANCE (EASTWARD), HAVING A PUBLISHED ELEVATION OF 208.076 METRES.

SITE BENCHMARK ELEV. = m
SEE GEODEIC BENCHMARK

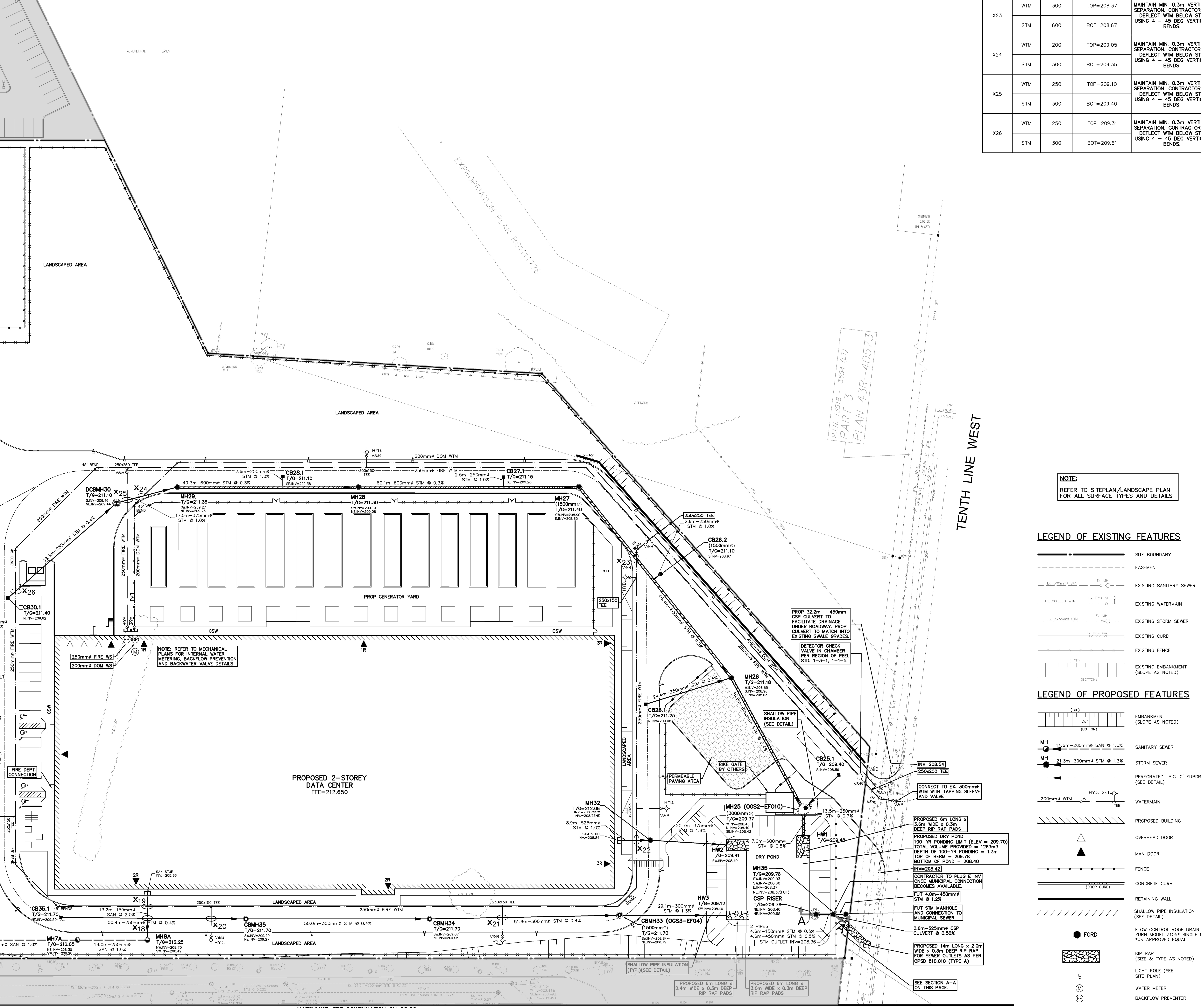
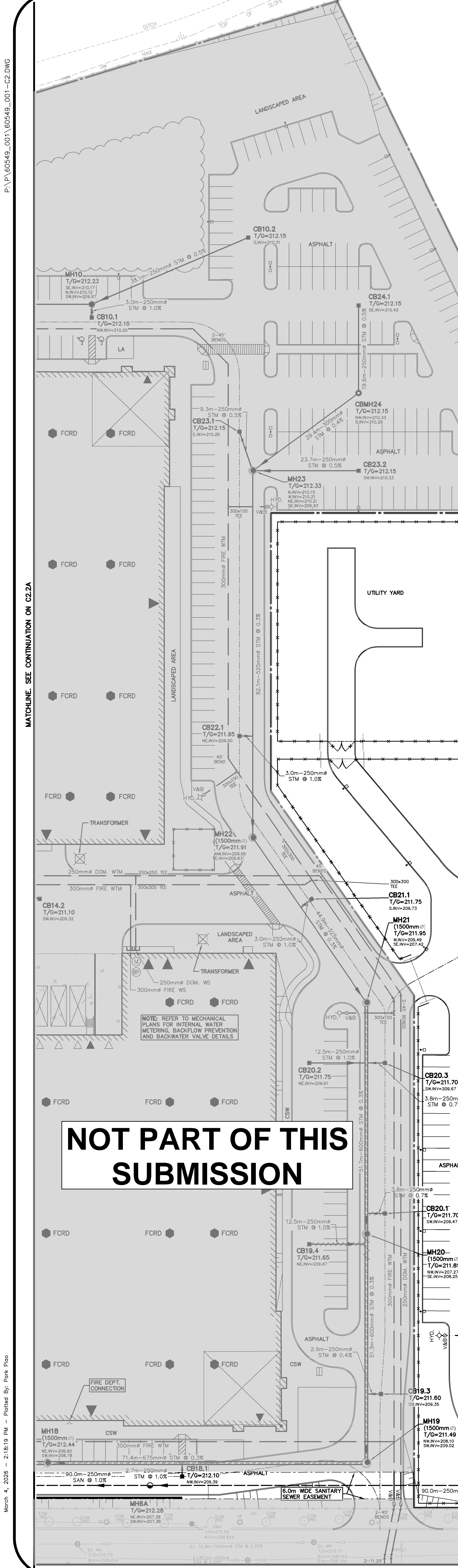
NOTE TO CONTRACTOR:

DO NOT SCALE DRAWINGS.

CONTRACTORS MUST CHECK AND VERIFY ALL DIMENSIONS AND REPORT ANY DISCREPANCIES TO THE ENGINEER BEFORE PROCEEDING WITH THE WORK.

ALL DRAWINGS REMAIN THE PROPERTY OF THE ENGINEER AND SHALL NOT BE REPRODUCED OR REUSED WITHOUT THE ENGINEER'S WRITTEN PERMISSION.

THE OWNER/ARCHITECT/CONTRACTOR IS ADVISED THAT M.T.E. CONSULTANTS INC. CANNOT CERTIFY ANY COMPONENT OF THE SITE WORKS NOT INSPECTED DURING CONSTRUCTION. IT IS THE RESPONSIBILITY OF THE GENERAL CONTRACTOR TO NOTIFY M.T.E. CONSULTANTS INC. PRIOR TO COMMENCEMENT OF CONSTRUCTION TO ARRANGE FOR INSPECTION.



NOTE:
REFER TO SITEPLAN/LANDSCAPE PLAN FOR ALL SURFACE TYPES AND DETAILS

LEGEND OF EXISTING FEATURES

- SITE BOUNDARY
- EASEMENT
- EXISTING SANITARY SEWER
- EXISTING WATERMAIN
- EXISTING STORM SEWER
- EXISTING CURB
- EXISTING FENCE
- EXISTING EMBANKMENT (SLOPE AS NOTED)

LEGEND OF PROPOSED FEATURES

- EMBANKMENT (SLOPE AS NOTED)
- Sanitary Sewer: 150mm-200mm SAN @ 1.0%
- Storm Sewer: 150mm-300mm STM @ 1.3%
- Perforated 600mm SUBDRAIN (SEE DETAIL)
- Watermain
- Proposed Building
- Overhead Door
- Man Door
- Fence
- Concrete Curb
- Retaining Wall
- Shallow Pipe Insulation (SEE DETAIL)
- Flow Control Roof Drain (ZURN MODEL 2100P SINGLE NOTCH OR APPROVED EQUAL)
- RP RAP (SIZE & TYPE AS NOTED)
- Light Pole (SEE SITE PLAN)
- Water Meter
- Backflow Preventer

8.		
7.		
6.	ISSUED FOR SPA RE-SUBMISSION	002 2024-01-04
5.	RE-ISSUED FOR GRADING PERMIT	002 2024-02-09
4.	ISSUED FOR GRADING PERMIT	002 2024-10-18
3.	ISSUED FOR SPA	002 2024-08-10
2.	ISSUED FOR GRADING PERMIT	002 2024-09-30
1.	ISSUED FOR SPA	002 2024-08-05

M.T.E. CONSULTANTS INC.

MTE
Engineers, Scientists, Surveyors

905-639-2552

2024-03-04
R. ZHOU
1006/161
PROFESIONAL ENGINEER
PROFESOR DE INGENIERIA

NOT FOR CONSTRUCTION

PETROFF PARTNERSHIP ARCHITECTS
10 AVIVA WAY SUITE 400 MARKHAM

PROLOGIS MEADOWVALE DISTRIBUTION CENTRE
7564 TENTH LINE WEST MISSISSAUGA

SITE SERVICING PLAN 2

Client: R. ZHOU
Project: PROLOGIS MEADOWVALE DISTRIBUTION CENTRE
Drawing: C2.2B

Project Manager: R. ZHOU
Design By: N.Z.R.
Drawn By: AXG
Checked By: N.Z.R.
Surveyed By: Others
Date: Jun. 11 / 25
Scale: 1:400

Job No.: 60549_001
Checked By: RDZ
Drawing No.: N.Z.R.
Sheet 7 of 9