

Stage 1 and 2 Archaeological Assessment of

7564 Tenth Line West, (Formerly Lot 14, Concession 10, Geographic Township of Trafalgar, Halton County), Now in the City of Mississauga, Regional Municipality of Peel, Ontario

Prepared by:



MCM Licensee: Dr. Rhan-Ju Song
MCM Professional Archaeological Consulting Licence: P1345
MCM Project Information Number: P1345-0158-2025

REVISED REPORT

Report Dated: March 20, 2026

EXECUTIVE SUMMARY

AS&G Archaeological Consulting Inc. was contracted to conduct a Stage 1 and 2 Archaeological Assessment of 7564 Tenth Line West, (Formerly Lot 14, Concession 10, Geographic Township of Trafalgar, Halton County), Now in the City of Mississauga, Regional Municipality of Peel, Ontario.

A Stage 1 Background Study of the project area was conducted to provide information about its geography, history, previous archaeological fieldwork, and current land condition in order to evaluate and document in detail the project area's archaeological potential and to recommend appropriate strategies for Stage 2 survey. The Stage 1 archaeological Background Study established that there is potential for the recovery of archaeologically significant materials within the project area.

A Stage 2 Archaeological Assessment was conducted to document all archaeological resources on the project area, to determine whether the project area contains archaeological resources requiring further assessment, and to recommend next steps. The characteristics of the project area dictated that the Stage 2 Assessment be performed by both a pedestrian and test-pitting survey performed at standardized five metre intervals throughout the project area limits.

The Stage 2 Archaeological Assessment resulted in the recovery of one archaeological site (AjGw-730) (designated Findspot P1) and two isolated Indigenous lithic findspots (Findspots P2, and P3). Site AjGw-730 is an isolated findspot consisting of a diagnostic Middle Archaic Brewerton projectile point. It does not retain further cultural heritage value or interest (CHVI). Two additional isolated findspots (Findspot P2 and P3) were also identified. They consist of non-diagnostic flake fragments and do not retain further CHVI.

The report recommends that neither Site AjGw-730 or Findspots P2 and P3 retain cultural heritage value or interest (CHVI). **Therefore, the report recommends that no further archaeological assessment of the project area (Map 6) is required.**

TABLE OF CONTENTS

Executive Summary	i
Table of Contents	ii
Project Personnel	iii
1.0 Project Context	1
2.0 Field Methods	22
3.0 Records of Finds	24
4.0 Analysis and Conclusions	25
5.0 Recommendations	26
6.0 Advice on Compliance with Legislations	27
7.0 Bibliography and Sources	29
8.0 Images	33
9.0 Maps	37
APPENDIX A	43

PROJECT PERSONNEL

Project Manager:	Dr. Rhan-Ju Song (P1345)
Project/Field Director:	Mr. Norbert Stanchly (R149)
Field Assistants:	Mr. Peter Zubrzycki (A1301) Ms. Jacqueline McCowan
Artifact Analysis:	Mr. Norbert Stanchly
Report Preparation:	Mr. Norbert Stanchly Mr. Alexander Moore (R1365) Mr. Peter Zubrzycki
Graphics:	Mr. Pete Demarte (R1073) Mr. Norbert Stanchly

INTRODUCTION

The *Ontario Heritage Act*, R.S.O. 1990 c. O.18, requires anyone wishing to carry out archaeological fieldwork in Ontario to have a license from the *Ministry of Citizenship and Multiculturalism* (MCM). All licensees are to file a report with the MCM containing details of the fieldwork that has been done for each project. Following standards and guidelines set out by the MCM is a condition of a licence to conduct archaeological fieldwork in Ontario. **AS&G Archaeological Consulting Inc. (AS&G)** confirms that this report meets ministry report requirements as set out in the 2011 *Standards and Guidelines for Consultant Archaeologists* (MCM 2011) and is filed in fulfillment of the terms and conditions of an archaeological license.

1.0 PROJECT CONTEXT

This section of the report will provide the context for the archaeological fieldwork, including the development context, the historical context, and the archaeological context.

1.1 Development Context

AS&G Archaeological Consulting Inc. was contracted to conduct a Stage 1 and 2 Archaeological Assessment of 7564 Tenth Line West, (Formerly Lot 14, Concession 10, Geographic Township of Trafalgar, Halton County), Now in the City of Mississauga, Regional Municipality of Peel, Ontario.

The proposed development project was triggered by the *Planning Act*, and the Archaeological Assessment was performed in advance of a site plan application. The proponent intends to develop a data storage facility and two industrial warehouse buildings and associated parking and utility areas.

Permission to access the project area to conduct all required archaeological fieldwork activities, including the recovery of artifacts was given by the landowner and their representative.

1.2 Historical Context

In advance of the Stage 2 assessment, a Stage 1 background study of the project area was conducted in order to document the project area's archaeological and land use history and present condition. Several sources were referenced to determine if features or characteristics indicating archaeological potential for Pre-Contact and Post-Contact resources exist within the project area. These included information about the project

area's geography, history, previous archaeological fieldwork, current land condition, contemporary and historic satellite imagery, and historic atlas maps.

Characteristics indicating archaeological potential include the nearby presence of previously identified archaeological sites, primary and secondary water sources, features indicating past water sources, accessible or inaccessible shoreline, pockets of well-drained sandy soil, distinctive land formations that might have been special or spiritual places, such as waterfalls, rock outcrops, caverns, mounds, and promontories and their bases, resource areas, (including food or medicinal plants, scarce raw materials, early Euro-Canadian industry), areas of early Euro-Canadian settlement, early historical transportation routes, property listed on a municipal register or designated under the *Ontario Heritage Act* or that is a federal, provincial or municipal historic landmark or site, and property that local histories or informants have identified with possible archaeological sites, historical events, activities, or occupations.

Archaeological potential can be determined not to be present for either the entire property or a part of it when the area under consideration has been subject to extensive and deep land alterations that have severely damaged the integrity of any archaeological resources. This is commonly referred to as 'disturbed' or 'disturbance', and may include: quarrying, major landscaping involving grading below topsoil, building footprints, and sewage and infrastructure development. Archaeological potential is not removed where there is documented potential for deeply buried intact archaeological resources beneath land alterations, or where it cannot be clearly demonstrated through background research and property inspection that there has been complete and intensive disturbance of an area. Where complete disturbance cannot be demonstrated in Stage 1, it will be necessary to undertake Stage 2 assessment.

The background study determined that the following features or characteristics indicate archaeological potential for the project area:

- The project area is located within an area of early Euro-Canadian settlement and transportation routes.
- The project area is situated within the Peel Plain physiographic region of southern Ontario. This is a region of level-to-undulating tracts of clay soils covering 300 square miles across the central portions of the Regional Municipalities of York, Peel, and Halton, which exhibits a gradual slope toward Lake Ontario (Chapman and Putnam 1984).

- There are twenty-nine (29) known archaeological sites within a one-kilometre radius of the project area, four (4) of which are located within 300 metres of the project area limits.

In summary, there are areas of archaeological potential within the project area. The Stage 1 background study identified that the project area retains archaeological potential.

1.2.1 Indigenous Historical Context

The property is situated in an area of Ontario that has a rich and diverse cultural history that extends back at least 11,000 years ago. To provide context for this report, the settlement history is summarized below.

1.2.1.1 Pre-Contact Indigenous Period

Drawn from Ellis and Ferris (1990), Table 1 provides a general outline of the Pre-Contact and early Euro-Canadian Contact Period cultural history of the property.

Table 1: General Archaeological Chronology for South-Central Ontario

Cultural Period	Archaeological Material Culture & Cultural Affiliations	Date Range	Cultural Developments
PALEO			
Early	Gainey, Barnes & Crowfield, Fluted Points	11,000-10,500 BP	Big game hunters, i.e., caribou
Late	Holcombe, Hi-Lo & Lanceolate Points	10,500-9,500 BP	Paleo Point Technology
ARCHAIC			
Early	Bifurcate-based, Nettling, & Side-notched Points	9,800-8,000 BP	Nomadic hunters/gathers
Middle	Stanley, Kirk, Brewerton, & Laurentian Points	8,000-4,000 BP	Focused seasonal resource areas
Late	Lamoka, Genesee, Innes & Crawford Knoll Points	4,500-2,500 BP	Polished/groundstone tools, burial ceremonialism
	Hind Points	3,000-2,600 BP	
WOODLAND			
Early	Meadowood & Middlesex	2,800-2,000 BP	Introduction of pottery, elaborate burials
Middle	Princess Point, Saugeen & Point Peninsula	2,000-950 BP	Long-distance trade, burial mounds, horticulture

Cultural Period	Archaeological Material Culture & Cultural Affiliations	Date Range	Cultural Developments
Late	Pickering, Uren, Middleport (Anishinabek/Iroquois) & Algonkian-Wendat Alliance	950-300 BP	Emergence of agricultural villages Large, palisaded villages, trade, alliances, and warfare
HISTORIC			
	Huron, Neutral, Petun, Odawa, Ojibwa, Six Nations Iroquois, Ojibwa & Mississauga	350 BP-Present	Mission villages and reserves
	Early Euro-Canadian		European settlement

1.2.1.2 Paleo Period

Archaeological evidence demonstrates that people inhabited south-central Ontario, shortly after the end of the Wisconsin Glacial Period, approximately 11,000 years ago. This early settlement period is referred to as the Paleo Period (Ellis and Deller 1990). Based upon current archaeological knowledge, Indigenous groups originally living south of the Great Lakes migrated to the area. The settlement patterns of Early Paleo peoples consisting of small bands, i.e., less than 35 individuals, maintained a seasonal pattern of mobility over vast territories.

These Early Paleo sites are typically located in elevated locations, with well-drained loamy soils, with many known sites found on former beach ridges, associated with glacial lakes (Ellis and Deller 1990). These sites were likely formed when they were occupied for short increments, over the course of many years, possibly as communal hunting camps. Their locations appear conducive to hunting migratory mammals, such as caribou (Ellis and Deller 1990).

During the Late Paleo Period (10,500-9,500 BP), the south-central Ontario environment started to become dominated by closed coniferous forests, with only some minor deciduous elements. The hunting landscape had also changed, as many of the large game species that had been hunted in the early part of the Paleo Period, either migrated further north, or in some cases, had become extinct, i.e., mastodons and mammoths (Ellis and Deller 1990). Comparable to the Early Paleo peoples, Late Paleo peoples covered large territories as a response to seasonal resource fluctuations. In Ontario, Late Paleo Period inhabitation appears more frequently in the archaeological record, comparable to the Early Paleo Period. Thus, it has been suggested that migratory populations had increased in size (Ellis and Deller 1990).

1.2.1.3 Archaic Period

During the Early Archaic Period (9,800-8,000 BP), the jack and red pine forests that characterized the Late Paleo environment, were replaced by forests of white pine, with a few correlated deciduous trees (Ellis et al. 1990). Based on material culture, the Early Archaic Period is recognized by the shift to side and corner-notched projectile points. Other notable innovations, include the introduction of groundstone tools such as celts and axes. These tools suggest that there was a woodworking industry. Additionally, the presence of these, often large and not easily portable tools, suggests that there may have been a reduction in seasonal movement. However, the current understanding of the period suspects that population densities were still low, and seasonal territories remained extensive (Ellis et al. 1990).

During the Middle Archaic Period (8,000-4,000 BP), it is speculated that there was an increase in regional population growth, which precipitated a decrease in overall seasonal migration territories. Additionally, as a consequence of population growth, a shift in subsistence patterns occurred, as more people needed to be supported from the resources available within smaller geographic areas (Ellis et al. 1990). Thus, the Middle Archaic Period is characterized by the diversification of toolkits and diets, such as with the introduction of net-sinkers and bannerstones, as well as other stone tools specifically designed for the preparation of wild plant foods. The appearance of net-sinkers suggests that fishing was becoming an important aspect of the subsistence economy. In contrast, bannerstones were carefully crafted groundstone devices that served as a counterbalance for *atlatls* or “spear-throwers”, used in hunting large game (Ellis et al. 1990).

Another characteristic of the Middle Archaic Period is an increased reliance on local, often poor-quality chert resources, for the manufacturing of projectile points and other chipped stone tools. Unlike earlier periods, when nomadic groups occupied vast territories, at least once in their seasonal migration it was possible for them to visit a primary outcrop of high-quality chert. However, during the Middle Archaic Period, individual groups inhabited smaller territories, which usually did not contain a source of high-quality raw material, and were forced to use the locally sourced, poorer quality chert resources (Ellis et al. 1990). It was also during the latter part of the Middle Archaic Period, that long-distance trade routes began to develop, which spanned the northeastern part of the North American continent. For instance, copper tools, which were manufactured from a source located northwest of Lake Superior, were being widely traded (Ellis et al. 1990).

The trend toward a decreasing territory size and a broadening subsistence economy, continued during the Late Archaic Period (4,500-2,500 BP). Similarly, archaeologically Late Archaic sites are more numerous than Early or Middle Archaic sites, which is attributed to increasing population levels (Ellis et al. 1990). With the trend toward larger groups, the first cemeteries have also been dated to the Late Archaic Period. Prior to this, individuals were interred close to the location where they died. Furthermore, during the Late Archaic Period, if an individual died while away from their home territory, the remains would be kept until they could be placed in the group cemetery. Therefore, it is not unusual to find disarticulated skeletons, and/or skeletons lacking minor elements, i.e., fingers, toes and/or ribs (Ellis et al. 1990).

The appearance of cemeteries during the Late Archaic Period has been interpreted as a response to increased population densities. The increased populations also demonstrated evidence of regionalized variation in Late Archaic projectile point styles (Ellis et al. 1990). These differences were likely indicative of the different relationships the people had with the land and waters they inhabited. Additionally, trade networks established during the Middle Archaic Period continued to flourish. For instance, copper native to northern Ontario and marine shell artifacts from as far away as the Mid-Atlantic coast, are frequently encountered as ceremonial grave inclusions. Other artifacts such as polished stone pipes and banded slate gorgets, also appear on Late Archaic Period sites. One of the more unusual and interesting of the Late Archaic artifacts is the “*birdstone*”. Birdstones are small, bird-like effigies usually manufactured from green banded slate (Ellis et al. 1990).

1.2.1.4 Woodland Period

For archaeologists, the Early Woodland Period (2,800-2,000 BP) is distinguished from the Late Archaic Period primarily by the addition of ceramic technology. The first pots were crudely constructed, had undecorated thick walls, and were friable. Spence et al. (1990) suggest they were used in the processing of nut oils, which required boiling crushed nut fragments in water and skimming off the oil. As these vessels were not easily portable, individual pots were likely not used for extended periods of time. Additionally, as there are many Early Woodland Period sites where no pottery was recovered, it has been suggested that these poorly constructed vessels were not utilized by all Early Woodland peoples (Spence et al. 1990).

Other than the limited use of ceramics, there were other subtle differences between the Late Archaic and the Early Woodland Periods. For example,

“pop-eyes”, a protrusion from the side of the head, was added to birdstones. Similarly, a slight modification was made to the thin, well-made projectile points made during the Archaic Period, i.e. Early Woodland variants were side-notched rather than the corner-notched (Spence et al. 1990). The trade networks which were established in the Middle and Late Archaic Periods, continued to flourish; however, there appeared to be a decrease in the trade of marine shell during the Early Woodland Period. Additionally, projectile points crafted from high quality American Midwest materials, began to be found on southwestern Ontario sites, dating toward the end of the Early Woodland Period (Spence et al. 1990).

The Middle Woodland (2,000-950 BP) is characterized by rich, densely occupied sites, which are usually found bordering major rivers and lakes. While these locations were inhabited periodically by earlier peoples, Middle Woodland sites are significant as they represent long periods of continuous occupations, i.e., hundreds of years (Spence et al. 1990). The shift in settlement patterning, created large deposits of artifacts, as the sites appear to have functioned as home bases that were occupied throughout the year. Numerous smaller Middle Woodland sites have been found inland, and likely functioned as specialized camps, for the exploitation of local resources (Spence et al. 1990).

The transition to a more sedentary lifestyle, also resulted in a shift in subsistence patterns, comparable to those of the Early Woodland Period. Although, groups still relied on hunting and gathering, fish became a predominant dietary staple, to meet their growing subsistence needs (Spence et al. 1990). Additionally, the people of the Middle Woodland Period, relied more on ceramic technology, with many vessels being heavily decorated with impressed designs covering the entire exterior surface and the upper portion of the interior of vessels (Spence et al. 1990).

Material culture changes that occurred in the early portion of the Late Woodland Period (950-300 BP), include the appearance of triangular projectile point styles, first seen with the Levanna form, as well as a change to more intricate designs on ceramics. These new methods included cord-wrapped stick decorated ceramics, which were created using the paddle and anvil forming technique (Bursey 1995; Ferris and Spence 1995; Spence et al. 1990; Williamson 1990).

The Late Woodland Period is also marked by an increasing reliance on corn (*Zea mays*) horticulture (Crawford et al. 1997; Fox 1990; Martin 2004; Smith 1990; Williamson 1990). Although corn was possibly introduced into southwestern Ontario from the American Midwest as early as 2,500 BP, it was not considered a dietary staple until at three to four hundred years

later. From there, corn cultivation gradually spread into southcentral and southeastern Ontario. Thus, the Late Woodland Period is widely accepted as the beginning of a reliance on agriculture, for subsistence. Researchers have suggested that a warming trend, which increased the number of frost-free days, was likely a catalyst for the spread of maize into southern Ontario (Stothers and Yarnell 1977). Additionally, sites have been identified in a wider variety of environments, including riverine, lacustrine and wetlands (Dieterman 2001).

In southern Ontario, the first agricultural villages have been dated to approximately 1,200 BP to 700 BP. These sites are typically found on elevated areas, with well-drained sandy soils. These early villages share many characteristics with later Iroquoian settlements that were recorded at the time European contact, including longhouses and/or palisades (Dodd et al. 1990; Williamson 1990). However, the scale was much smaller, with early longhouses only averaging 12.4 metres in length. Furthermore, the excavation and exposure of cultural features archaeologically, indicate that there was the possibility of overlapping structures which has been interpreted as evidence of long-term occupation, as it indicates that the structures were present long enough to require them to be re-built (Dodd et al. 1990; Williamson 1990).

It was documented that due to soil depletion resulting from farming, and the scarcity of easily accessible firewood during this period, the Jesuits reported that the Huron moved their villages every 10-15 years (Pearce 2010). Since the more sedentary sites were occupied for considerably longer amounts of time, it is hypothesized that the Indigenous communities relied less heavily on corn. Furthermore, small seasonally occupied sites have also been documented, which relate specifically to nut collection, deer procurement, and fishing activities. Thus, the reduced demand on resources within close proximity to the settlement, coupled with the smaller reliance on crops, indicates that these groups maintained a considerably smaller population size (Pearce 2010).

Around 700-600 BP, the size of villages increased from approximately 0.6 hectares, to approximately 1-2 hectares. Correspondingly, the size of longhouses also increased significantly, to an average of 30 metres, with some longhouses being documented as large as 45 metres in length (Dodd et al. 1990; Smith 1990). Although the enlargement of longhouses can be explained by the significant increase in overall population levels within villages, other possible hypotheses include changes to the greater socio-political and socio-economic structure of the communities. For instance, Dodd et al. (1990) have suggested that several smaller communities may have merged during this period, to increase protection and secure defense

from neighbouring tribes. This hypothesis is supported by the presence of known settlements with up to seven rows of palisades, indicating the potential need for strong protective measures.

With the growth of population levels and an increase in village sizes during the Late Woodland Period, it is postulated that there was greater social organization and community planning occurring during this time. Whereas longhouses were originally haphazardly placed, the growing population levels and necessity for security and nearby resources, required further organization to accommodate the increasingly localized communities. For instance, archaeologists have documented the organization of two or more discrete groups of parallel, tightly spaced longhouses on several sites. It has been hypothesized that the organization and grouping of different habitations, may indicate the initial development of clans, a characteristic historically attributed to the Iroquoian peoples (Dodd et al. 1990).

Toward the end of the Late Woodland Period (approximately 600 BP), village sizes continued to increase, as did longhouse lengths, i.e., an average length of 62 metres. However, around approximately 500 BP, longhouse lengths were significantly shorter, with an average length of only 30 metres (Lennox and Fitzgerald 1990). The significant decrease in the overall length of longhouses in a short amount of time, is not well understood; however, it has been hypothesized that it is correlated with the introduction of European diseases, i.e., smallpox, which caused a steep reduction in Indigenous population sizes (Lennox and Fitzgerald 1990).

Even with the decrease in the length of longhouses, archaeologists have noted that some village populations continued to grow, with periodic expansions visually documented. With increase in disease and subsequently a rise in warfare between communities, it is postulated that the expansion was the result of the amalgamation of smaller villages during the early Euro-Canadian Post Contact Period. These sites also appeared to be heavily fortified with many rows of wooden palisades, again supporting the hypothesis that smaller villages united for defensive purposes (Anderson 2009).

1.2.1.5 Post-Contact Indigenous Period

At the end of the 17th century and beginning of the 18th century, the dispersal of several Iroquoian-speaking peoples by the New York State Iroquois, coupled with the return of the Algonkian-speaking groups from northern Ontario, formed the Post-Contact Indigenous occupation landscape of southern Ontario (Schmalz 1991). As European settlers encroached on traditional Indigenous territories, settlement sizes,

populations, and material culture shifted. Despite this shift, there remains a continuity from ancient Indigenous groups to the communities written about in historical accounts (Ferris 2009). Thus, it should be noted that the Indigenous peoples of southern Ontario have deposited archaeologically significant resources throughout the province, demonstrating a shared traditional and continuing history, regardless of whether their presence is recorded in historic early Euro-Canadian documents.

1.2.2 Post-Contact History of Halton County and Trafalgar Township

Halton County was settled as early as the 1780's when United Empire Loyalists, refugees from the American Revolution, settle the land in the area (Mika & Mika 1981: 216). The Gore District, of which Halton County was a part, was well populated by 1817 (Mika & Mika 1981). Notable communities within Halton County include Georgetown, Milton, Burlington, and Oakville. Smaller communities present within the county include Glen Williams, Norval, Limehouse, Ashgrove, Hornby, Speyside, Eden Mills, Brookville, Haltonville, Moffat, Milton Heights, Campbellville, Kilbride, Sheridan Park, Omagh, and Palermo (Mika & Mika 1981: 219).

Early industry in the county primarily consisted of lumbering, and there were numerous sawmills along the Credit River, and its Branches, Twelve Mile Creek and Sixteen Mile Creek (Mika & Mika 1981: 218). Other industries were also established in Halton County as a result of access to transportation, the county being served by the Grand Trunk Railway, the Great Western, the Hamilton, and North-Western Railway, and the Credit Valley Railway, as well as harbours at Bronte, Oakville, and Burlington (Mika & Mika 1981). Despite being one of the smallest counties in the province, it was one of the most densely populated (Mika & Mika 1981: 216). In 1974, the municipality of Halton was abolished and replaced by the Regional Municipality of Halton.

The Township of Trafalgar, a part of Halton County, was acquired in 1795 and the first survey of the area took place in 1806 (Armstrong 1985: 148). The first recorded settler was recorded in 1806 (Armstrong 1985). The township at its inception was approximately 69,000 acres in size (Armstrong 1985). Trafalgar Township is described by Smith (1846: 197) as a township located within the Gore District of Upper Canada bound on the north-east by the Township of Toronto; on the north-west by Esquesing; on the south-west by Nelson; and on the south-east by Lake Ontario. At the time of the survey, 70,115 acres of the township were taken up, 28,180 of which were under cultivation (Smith 1846). The land, with the exception of that bordering Lake Ontario, is described as being of excellent quality for agriculture (Smith 1846).

1.2.3 Past Land Use of the Property

Historically, the project area lies in part of Lot 14, Concession 10, Geographic Township of Trafalgar, Halton County.

Pope's 1877 *Illustrated Historical Atlas of the County of Halton, Ont.* indicates that part of Lot 14, Concession 10, Geographic Township of Trafalgar, was owned by a "J. Hustler". The map also indicates the presence of an orchard and a single structure within the project area.

According to Tremaine's 1858 *Map of the County of Halton, Canada West*, there is no owner listed for Lot 14, Concession 10, Geographic Township of Trafalgar, nor does it illustrate any structures or other features of interest within the project area.

It must be borne in mind that inclusion of names of property owners and depictions of structures within properties on these maps were sold by subscription. While information included within these maps may provide information about occupation of the property at a specific point in time, the absence of such information does not indicate that the property was not occupied.

1.3 Archaeological Context

1.3.1 Known Archaeological Sites

In Ontario, information concerning archaeological sites is stored in the Ontario Archaeological Sites Database (O.A.S.D.), an inventory of the documented archaeological record in Ontario.

Summary information on the known archaeological sites in the vicinity of the property was obtained from the MCM site database (MCM 2025). There are twenty-nine (29) known archaeological sites recorded in the MCM Archaeological Sites Database within 1 kilometre of the project area, four (4) of which are located within a 300-metre radius of the project area. Two (2) of these sites are located within 50 metres of the project area (Table 2).

Table 2: Known Archaeological Sites within 1-Km of Project Area					
Borden Number	Site Name	Time Period	Affinity	Site Type	Current Development Review Status
AjGw-712	Location 2	Post-Contact, Pre-Contact		Scatter	Further CHVI
AjGw-709	Location 2	Post-Contact		Scatter	Further CHVI
AjGw-707	Location 1	Post-Contact		Scatter	Further CHVI
AjGw-706*	Location 1	Post-Contact, Pre-Contact		Scatter	Further CHVI
AjGw-688	24-597H2	Post-Contact	Euro-Canadian	Farmstead	No Further CHVI
AjGw-687	24-597P4	Pre-Contact	Aboriginal	Scatter	No Further CHVI
AjGw-686	24-597P3	Pre-Contact	Aboriginal	Scatter	No Further CHVI
AjGw-685	24-597P2	Pre-Contact	Aboriginal	Scatter	No Further CHVI
AjGw-684	24-597P1	Pre-Contact	Aboriginal	Scatter	No Further CHVI
AjGw-683	24-597H1	Post-Contact	Euro-Canadian	Farmstead	Further CHVI
AjGw-676		Post-Contact		Farmstead	No Further CHVI
AjGw-666		Post-Contact	Euro-Canadian	Homestead	Further CHVI
AjGw-63	Junction	Pre-Contact	Aboriginal	Othercamp / campsite	
AjGw-62	Poor	Pre-Contact	Aboriginal	Findspot	
AjGw-558	Buck	Post-Contact		Other-artificial concentration of artifacts in leveling fill	No Further CHVI
AjGw-504	Kennedy site	Post-Contact	Euro-Canadian	Homestead	
AjGw-469	Shand Site (AjGw-469)	Post-Contact			
AjGw-468*		Archaic, Late	Aboriginal	Findspot	
AjGw-454*		Other		Otherfindspot	
AjGw-453		Archaic, Middle	Aboriginal	Findspot	
AjGw-318	Pepperglen	Post-Contact	Euro-Canadian	Homestead	
AjGw-299	Morrow	Post-Contact	Euro-Canadian	Homestead	
AjGw-276	Villeneuve	Pre-Contact	Aboriginal	Othercamp / campsite	

Table 2: Known Archaeological Sites within 1-Km of Project Area					
Borden Number	Site Name	Time Period	Affinity	Site Type	Current Development Review Status
AjGw-271*	John May Homestead	Post-Contact	Euro-Canadian	Homestead, midden	
AjGw-253	"J. McM." Homestead	Post-Contact	Euro-Canadian	Homestead, midden	
AjGw-231	Derry Road	Pre-Contact	Aboriginal	Findspot	
AjGw-230	Terragar	Pre-Contact	Aboriginal	Findspot	
AjGw-226	Meadowval e TS	Pre-Contact	Aboriginal	Findspot	
AjGw-21	Noble				

* Sites Located within 300 metres of Property Limits.

According to the MCM site database, there are two archaeological sites located within a 50-metre radius of the project area: AjGw-454 and AjGw-468.

AjGw-454

The AjGw-454 site was discovered during a Stage 2 Archaeological Assessment conducted by *Archaeological Services Inc. (ASI)* in 2007 (P057-379-2007). The site is described as an isolated findspot consisting of an Onondaga chert biface missing its tip and base. The site is deemed to have no further CHVI (ASI 2007b).

AjGw-468

The AjGw-468 site was also discovered during the Stage 2 Archaeological Assessment conducted by *Archaeological Services Inc. (ASI)* in 2007 (P057-379-2007). The site is described as an isolated Late Archaic findspot consisting of an Onondaga projectile point with a missing base. The site is deemed to have no further CHVI (ASI 2007b).

1.3.2 Previous Archaeological Assessments

A review of archaeological reports within the *MCM Public Register of Archaeological Reports* indicated that there are three archaeological assessments that have previously been undertaken on or within fifty metres of the project area.

Firstly, a Stage 1 Archaeological assessment was conducted within the current project area by *Archaeological Services Inc. (ASI)* under PIF# P243-017-2007. A Stage 1 report, entitled: “Stage 1 Archaeological Assessment; Mississauga Fire & Emergency Services Training Centre Master Servicing Planning and Design Study, Municipal Class Environmental Assessment, The Corporation of the City of Mississauga, Ontario” (ASI 2007a) was submitted by ASI to the Ontario Ministry of Citizenship and Multiculturalism (MCM).

The results of the Stage 1 Archaeological Assessment and its review of archaeological potential for the property as they relate to the 2011 MCM *Standards and Guidelines for Consultant Archaeologists* are discussed in more detail below (ASI 2007a: 7):

The Stage 1 archaeological assessment for the Mississauga Fire & Emergency Services Training Centre Master Servicing Planning and Design Study in the City of Mississauga determined that 23 archaeological sites have been registered in the vicinity of the study area. Although seven of the sites are in the immediate vicinity of the study area, only three may be within 250 metres of the proposed impact areas for proposed utility servicing. Additionally, a review of the general physiography of the study area suggested that the study area exhibits potential for archaeological sites.

A field review of the study area (Figure 4) determined that much of the study area is agricultural lands where there is potential for archaeological sites. Some locales have been disturbed or are wetland.

In view of these results, the following recommendations are made:

- 1. A Stage 2 archaeological assessment should be conducted in selected areas within the study area (Figure 3: areas highlighted in green) in accordance with the Ministry of Culture’s Standards and Guidelines for Consulting Archaeologists (MCL 2006), in order to identify any archaeological remains that may be present; and*
- 2. A Stage 2 archaeological assessment should be conducted if installation of a proposed watermain along Ninth Line will impact lands outside of the existing typically disturbed ROW.*

Following this, a Stage 2 Archaeological assessment was conducted by ASI within the current project area under PIF# P057-379-2007. A Stage 2 report, entitled: “Stage 2 Archaeological Assessment Mississauga Fire & Emergency Services Training Centre Master Servicing Planning and Design Study, Municipal Class Environmental Assessment, The Corporation of the City of

Mississauga, Ontario" (ASI 2007b), was submitted by ASI to the Ministry of Citizenship and Multiculturalism (MCM) of Ontario.

The results of the Stage 2 Archaeological Assessment and its review of archaeological potential for the property as they relate to the 2011 MCM *Standards and Guidelines for Consultant Archaeologists* are discussed in more detail below (ASI 2007b: 7):

The Stage 1 archaeological assessment determined that the study area had potential for the identification of Aboriginal and historic archaeological sites where archaeological site potential has not been compromised by more recent disturbance. This determination was based on the identification of numerous registered sites in the vicinity, intensive historic land use, and the proximity to tributaries of East Sixteen Mile Creek (ASI 2007).

In accordance with this determination of archaeological site potential, a Stage 2 archaeological assessment of the Mississauga FESTC Master Servicing Planning and Design Study Class EA was undertaken in accordance with Ministry of Culture Standards and Guidelines for Consulting Archaeologists (final draft) (2006).

The study area was assessed by pedestrian survey and test pit survey. Four Aboriginal lithic findspots were identified in the study area, all from along the midline of the property. Three of the sites have been registered: P1 (AjGw-453), P2 (AjGw-454), and P4 (AjGw-468). No other archaeological remains were found in the remainder of the study area.

Preliminary results suggest that the lithic findspots may represent a significant archaeological resource that demonstrates potential to provide insight into the land-use patterns and cultural knowledge of Aboriginal people in the Mississauga Area.

It is therefore recommended that:

- 1. Due to the isolated nature of the lithic findspots – Sites P1 to P4 – no additional archaeological work is recommended for the midline area of the property.*
- 2. No additional archaeological work is recommended for the remainder of the study area, including the Ninth Line ROW containing the proposed watermain alignment, and it can be considered clear of further archaeological concern.*

3. *If any additional areas beyond the limits of the detail design are required for the construction of temporary roadway, parking lots, storm water management ponds, staging area, etc., or if different or revised alternative routes are chosen, it is recommended that these lands be subject to a Stage 2 archaeological assessment prior to disturbance.*

Lastly, a Stage 1-2 Archaeological was conducted on the property adjacent to the current project area by Archeoworks Inc. (AI) under PIF# P029-601-2009. A Stage 1-2 report, entitled: "Stage 1-2 Archaeological Assessment (AA) of: A Proposed Development Site and Argentia Road Extension, Located within Part of Lots 13 and 14, Concession 10, City of Mississauga, Halton County, Ontario", was submitted by Archeoworks Inc. (AI 2010) to the Ministry of Citizenship and Multiculturalism of Ontario.

The results of the Stage 1-2 Archaeological Assessment and its review of archaeological potential for the property as they relate to the 2011 MCM *Standards and Guidelines for Consultant Archaeologists* are discussed in more detail below (AI 2010: i):

*Background research has determined that 21 registered archaeological sites have been encountered within a two-kilometre radius of the study area while two sites specifically were previously encountered within the subject lands itself. As such there is high potential for the recovery of additional archaeological remains associated with these three sites or unknown resources. The Lisgar Meadow Brook and one of its tributaries bisect the study area, further supporting potential for the recovery of aboriginal settlement sites adjacent to these later sources. A review of the study area within *Illustrated Historical Atlas of Halton County, 1877*, indicates that one structure belonging to J.W. Bussel, in Lot 13, Concession 10, and an orchard were once located within its limits. Therefore, a review of historical context supports potential for locating historic archaeological resources within undisturbed portions of the study area boundaries.*

The study area is comprised of agricultural and fallow fields, a sparsely wooded area, a rural lot containing industrial equipment and low-lying wet areas associated with bisecting water sources. Observed disturbances consist of the rural lot containing farm and industrial equipment, an aluminum structure, numerous mobile trailers, industrial debris, a large gravel parking area and disturbances associated with development of the eastern portion of the proposed Argentia Road extension. Physiographic factors negatively affecting potential include

two ponds located with Block 9, the Lisgar Mead Brook that bisects that site, and sloping terrain associated with a drainage channel located along the proposed Argentia Road Extension. Due to the low archaeological potential classification of these disturbed and wet areas, archaeological testing was not undertaken.

Agricultural fields were subjected to pedestrian survey at intervals of five metres. During the survey, three historic scatters were encountered and identified as sites H1, H2, and H3. Based on the date of each scatter, only site H1 (1850s to 1880s) warrants further Stage 3 investigations. Sites H2 and H3 date to the late nineteenth/early twentieth century and are, thus, not considered archaeologically significant.

The fallow field and the sparsely wooded area were subjected to a test-pit survey at intervals of five metres. During the test-pit survey, modern foundation remains and associated artifacts, labelled site H4, were encountered. Due to the late timeframe of the structural material and collection of artifacts, site H4 is not considered archaeologically significant. Thus, with the exception of site H1, the remainder of the proposed development area and proposed Argentia Road extension can be cleared of further archaeological concern.

1.3.3 Environmental Context

The project area is situated within the Peel Plain physiographic region of southern Ontario. This region is “a level-to-undulating tract of clay soils... covering 300 square miles across the central portions of the Regional Municipalities of York, Peel, and Halton” that exhibits a gradual slope toward Lake Ontario (Chapman and Putnam 1984: 174). There are no undrained depressions within the Peel Plain as numerous rivers drain this physiographic region and streams (e.g., Etobicoke Creek) and their associated watersheds. Chapman and Putnam (1984: 175) note that the “underlying geological material of the plain is a till containing large amounts of shale and limestone” and, while there are some well-drained soils within the region, the dominant soil is the imperfectly drained Peel clay.

1.3.4 Current Conditions

The project area is located at municipal address, 7564 Tenth Line West, in the City of Mississauga. It consists of an irregularly shaped agricultural field approximately 16.2 hectares in size and measuring approximately 370 metres E-W by 665 metres N-S. The project area is bound to the west by an agricultural field, to the east by Tenth Line West, to the south by a

commercial development, and to the north by Highway 401 and a commercial development.

The Stage 2 archaeological fieldwork was undertaken on October 21 and 22, 2025. The weather on both days consisted of partly cloudy to overcast skies with warm temperatures. No rain occurred during the fieldwork. Thus, the weather conditions did not impede the assessment in any way.

AS&G is unaware of any previous findings and recommendations relevant to the current stage of work with the exception of those discussed above. There are no unusual physical features that may have affected fieldwork strategy decisions or the identification of artifacts or cultural features. There is no additional archaeological information that may be relevant to understanding the choice of fieldwork techniques or the recommendations of this report.

2.0 FIELD METHODS

This section of the report addresses Section 7.8.1 of the MCM 2011 *Standards and Guidelines for Consultant Archaeologists*. It does not address Section 7.7.2 because no property inspection was done as a separate Stage 1.

The characteristics of the project area dictated that a portion of the Stage 2 assessment be performed by a test pit survey. The test pit survey of the property followed the standards within Section 2.1.2 of the 2011 *Standards and Guidelines for Consultant Archaeologists*. Test pit survey was only conducted where ploughing was not possible or viable, as per Standard 1. The characteristics of the project area dictated that the Stage 2 assessment be performed by test pit survey at standardized five (5) metre intervals throughout the project area limits. All test pits were at least 30 cm in diameter. Each test pit was excavated by hand, into at least the first 5 cm of subsoil and examined for stratigraphy, cultural features, or evidence of fill where possible. Soils were screened through 6 mm mesh. No stratigraphy, artifacts or cultural features were encountered. All test pits were backfilled.

The characteristics of the property dictated that a portion of the Stage 2 assessment be performed by pedestrian survey at standardized five metre transect intervals. The pedestrian survey strategy followed standards as outlined in Section 2.1.1 of the 2011 *Standards and Guidelines for Consultant Archaeologists*. More specifically,

- 1) Actively or recently cultivated agricultural land must be subject to pedestrian survey.

- 2) Land to be surveyed must be recently ploughed. Use of chisel ploughs is not acceptable. In heavy clay soils ensure furrows are disked after ploughing to break them up further.
- 3) Land to be surveyed must be weathered by one heavy rainfall or several light rains to improve the visibility of archaeological resources.
- 4) Provide direction to the contractor undertaking the ploughing to plough deep enough to provide total topsoil exposure, but not deeper than previous ploughing.
- 5) At least 80% of the ploughed ground surface must be visible. If surface visibility is below 80% (e.g., due to crop stubble, weeds, young crop growth), ensure the land is reploughed and weathered before surveying.
- 6) Space survey transects at maximum intervals of 5 metres (20 survey transects per hectare).
- 7) If archaeological resources are found, decrease survey transects to 1 metre intervals over a minimum of a 20-metre radius around the find to determine whether it is an isolated find or part of a larger scatter. Continue working outward at this interval until the full extent of the surface scatter has been defined.
- 8) Collect all formal artifact types and diagnostic categories. For 19th century archaeological sites, also collect all refined ceramic sherds (or, for larger sites collect a sufficient sample to form the basis of accurate dating).
- 9) Based on professional judgment, strike a balance between gathering enough artifacts to document the archaeological site and leaving enough in place to relocate the site if it is necessary to conduct further assessment.

As relevant, we provide detailed and explicit descriptions addressing Standards 2a and b.

The general standards for project area survey under Section 2.1 of the 2011 *Standards and Guidelines for Consultant Archaeologists* were addressed as follows:

- Section 2.1, S1 – All of the project area was surveyed including areas immediately adjacent to existing structures (as applicable).
- Section 2.1, S2a (land of no or low potential due to physical features such as permanently wet areas, exposed bedrock, and steep slopes) – n/a
- Section 2.1, S2b (no or low potential due to extensive and deep land alterations) – n/a

- Section 2.1, S2c (lands recommended not to require Stage 2 assessment by a previous Stage 1 report where the Ministry has accepted that Stage 1 into the register) – n/a
- Section 2.1, S2d (lands designated for forest management activity w/o potential for impacts to archaeological sites, as determined through Stage 1 forest management plans process) - n/a
- Section 2.1, S2e (lands formally prohibited from alterations) - n/a
- Section 2.1, S2f (lands confirmed to be transferred to a public land holding body, etc.) - n/a
- Section 2.1, S3 - The Stage 2 survey was conducted when weather and lighting conditions permitted excellent visibility of features.
- Section 2.1, S4 - GPS recordings of the three isolated findspots are provided below. All coordinates were obtained using a Garmin GPSMap 64x GPS unit. No methods of correction were used. Accuracy of the reading was to within two metres for each point. Relevant UTM coordinates for all locations are presented in Table 3 below.

Table 3: GPS Readings for Findspots P1, P2, and P3 (UTM Zone 17T)		
Findspot	Easting	Northing
P1 (AjGw-730)	596873	4827466
P2	597291	4827777
P3	597045	4827441
Fixed Landmark (Hydro Pole on west side of 10 th Line West)	597336	4827786

- Section 2.1, S5 - All field activities were mapped in reference to either fixed landmark, survey stakes and development markers as appropriate. See report section 9.0 *Maps*.
- Section 2.1, S6 - See report section 8.0 *Images* for photo documentation of examples of field conditions encountered.

Approximately 90% of the project area was subject to pedestrian survey at five metre intervals. The remaining 10% of the project area was subject to test pit survey at five metre intervals.

3.0 RECORD OF FINDS

This section documents all finds discovered as a result of the Stage 1 and 2 Archaeological Assessment of the property.

As a result of the archaeological assessment, one archaeological site and two isolated findspots were discovered. Archaeological Site AjGw-730 consists of a diagnostic project point (designated Findspot P1 during field survey). More specifically, Site AjGw-730 is a Middle Archaic (8,000-4,000 BP) Brewerton Side-Notched projectile point manufactured from Onondaga chert. The point is complete and measures 35 mm in length, 20 mm in maximum width, and 8 mm in maximum thickness. No thermal alteration is noted on any of the artifacts. The projectile point was found during the course of the pedestrian survey.

Isolated Findspot P2 and Findspot P3 were also identified during the pedestrian survey. Findspot P2 and P3 are both non-diagnostic lithic flake fragments manufactured from Onondaga chert.

All artifacts will be retained at the corporate offices of **AS&G** until such time that they can be transferred to an agency or institution approved by the Ontario Ministry of Citizenship and Multiculturalism (MCM) on behalf of the government and citizens of Ontario. All of the artifacts are contained within a single banker's box.

An inventory of the documentary record generated in the field is provided in Table 4.

Table 4: Inventory of the Documentary Record	
Document Type	Description
Field Notes	<ul style="list-style-type: none"> Digital Files
Photographs	<ul style="list-style-type: none"> 25 digital photographs
Maps	<ul style="list-style-type: none"> Digital Files
Artifacts	<ul style="list-style-type: none"> Stored in one banker box

4.0 ANALYSIS AND CONCLUSIONS

The entirety of the project area was assessed. Two isolated non-diagnostic lithic findspots (P2 and P3) and one Middle Archaic Brewerton projectile point (Site AjGw-730 or P1) were identified in the Stage 2 archaeological assessment. P1 has been designated Site AjGw-730 as it represents a diagnostic artifact. Neither Site AjGw-730 or the two findspots retain cultural heritage value or interest and represent single episodes of deposition in the past.

5.0 RECOMMENDATIONS

The report makes recommendations only regarding archaeological matters.

The Stage 2 Archaeological Assessment resulted in the recovery of one archaeological site (AjGw-730) (designated Findspot P1) and two isolated Indigenous lithic findspots (Findspots P2, and P3). Site AjGw-730 is an isolated findspot consisting of a diagnostic Middle Archaic Brewerton projectile point. It does not retain further cultural heritage value or interest (CHVI). Two additional isolated findspots (Findspot P2 and P3) were also identified. They consist of non-diagnostic flake fragments and do not retain further CHVI.

The report recommends that neither Site AjGw-730 or Findspots P2 and P3 retain cultural heritage value or interest (CHVI). **Therefore, the report recommends that no further archaeological assessment of the project area (Map 6) is required.**

6.0 ADVICE ON COMPLIANCE WITH LEGISLATION

Section 7.5.9, Standard 1a

This report is submitted to the Minister of Citizenship and Multiculturalism as a condition of licensing in accordance with Part VI of the *Ontario Heritage Act*, R.S.O. 1990, c 0.18. The report is reviewed to ensure that it complies with the standards and guidelines that are issued by the Minister, and that the archaeological fieldwork and report recommendations ensure the conservation, protection and preservation of the cultural heritage of Ontario. When all matters relating to archaeological sites within the project area of a development proposal have been addressed to the satisfaction of the Ministry of Citizenship and Multiculturalism, a letter will be issued by the ministry stating that there are no further concerns with regard to alterations to archaeological sites by the proposed development.

Section 7.5.9, Standard 1b

It is an offence under Sections 48 and 69 of the *Ontario Heritage Act* for any party other than a licensed archaeologist to make any alteration to a known archaeological site or to remove any artifact or other physical evidence of past human use or activity from the site, until such time as a licensed archaeologist has completed archaeological fieldwork on the site, submitted a report to the Minister stating that the site has no further cultural heritage value or interest, and the report has been filed in the Ontario Public Register of Archaeological Reports referred to in Section 65.1 of the *Ontario Heritage Act*.

Section 7.5.9, Standard 1c

Should previously undocumented archaeological resources be discovered, they may be a new archaeological site and therefore subject to Section 48 (1) of the *Ontario Heritage Act*. The proponent or person discovering the archaeological resources must cease alteration of the site immediately and engage a licensed consultant archaeologist to carry out archaeological fieldwork, in compliance with Section 48 (1) of the *Ontario Heritage Act*.

Section 7.5.9, Standard 1d

The *Cemeteries Act*, R.S.O., 1990 c. C.4 and the *Funeral, Burial and Cremation Services Act*, 2002, S.O. 2002, c.33 (when proclaimed in force) require that any person discovering human remains must notify the police or coroner and the Registrar of Cemeteries at the Ministry of Consumer Services.

Section 7.5.9, Standard 2

Archaeological sites recommended for further archaeological fieldwork or protection remain subject to Section 48 (1) of the *Ontario Heritage Act* and may not be altered, or have artifacts removed from them, except by a person holding an archaeological licence.

7.0 BIBLIOGRAPHY AND SOURCES

Anderson, Jacob

2009 *The Lawson Site: An Early Sixteenth Century Neutral Iroquoian Fortress*. Museum of Ontario Archaeology, Special Publication No. 2. London, ON.

Archeoworks Inc. (AI)

2010 Stage 1-2 Archaeological Assessment (AA) of: A proposed Development Site and Argenticia Road Extension, Located within Part of Lots 13 and 14, Concession 10, City of Mississauga, Halton County, Ontario. PIF# P029-601-2009. Report on file with the Ministry of Citizenship and Multiculturalism, Toronto, ON.

Archaeological Services Inc. (ASI)

2007a Stage 1 Archaeological Assessment; Mississauga Fire & Emergency Services Training Centre Master Servicing Planning and Design Study, Municipal Class Environmental Assessment, The Corporation of the City of Mississauga, Ontario. PIF#: P243-017-2007. Report on file with the Ministry of Citizenship and Multiculturalism, Toronto, ON.

2007b Stage 2 Assessment Mississauga Fire & Emergency Services Training Centre Master Servicing Planning and Design Study Municipal Class Environmental Assessment, The Corporation of the City of Mississauga, Ontario. PIF#: P057-379-2007. Report on file with the Ministry of Citizenship and Multiculturalism, Toronto, ON.

Armstrong, F. H.

1985 *Handbook of Upper Canadian Chronology*. Dundurn Press, Toronto, ON.

Burse, J.A.

1995 The Transition from the Middle to Late Woodland Periods: A re-evaluation. In *Origins of the People of the Longhouse: Proceedings of the 21st Annual Symposium of the Ontario Archaeological Society*, edited by A. Bekerman and G. Warrick, pp. 43-54. Ontario Archaeological Society, North York, ON.

Chapman, L.J. and F. Putnam

1984 *The Physiography of Southern Ontario*, Ontario Geological Survey Special Volume 2. Government of Ontario, Ministry of Natural Resources, Toronto, ON.

- Crawford G.W., Smith D.G., and V.E. Boyer
1997 Dating the Entry of Corn (*Zea mays*) into the Lower Great Lakes Region. *American Antiquity* 62: 112-119.
- Dieterman, F.
2001 *Princess Point: The Landscape of Place*. Unpublished PhD Dissertation, Department of Anthropology, University of Toronto, Toronto, ON.
- Dodd, C.F., Poulton, D.R., Lennox, P.A., Smith, D.G. and G.A. Warrick
1990 The Middle Ontario Iroquoian Stage. In: *The Archaeology of Southern Ontario to A.D. 1650*. Occasional Publication of the London Chapter, Ontario Archaeological Society, Number 5:321-360. London, ON.
- Ellis, C.J. and Deller, D.B.
1990 Paleo-Indians. In C.J. Ellis, and N. Ferris, (Eds.). *The Archaeology of Southern Ontario to A.D. 1650*. London, Ontario: Occasional Publication of the London Chapter, OAS, pp. 37-64.
- Ellis, C.J. and N. Ferris (Eds.).
1990 *The Archaeology of Southern Ontario to A.D. 1650*. Occasional Publication of the London Chapter, OAS. London, ON.
- Ellis, C.J., Kenyon, I.T., and Spence, M.W.
1990 The Archaic. In C.J. Ellis, and N. Ferris, (Eds.). *The Archaeology of Southern Ontario to A.D. 1650*. Occasional Publication of the London Chapter, OAS, pp. 65-124. London, ON.
- Ferris, Neal
2009 *The Archaeology of Native-Lived Colonialism: Challenging History in the Great Lakes*. University of Arizona Press, Tucson, AZ.
- Ferris, Neal, and Spence M.
1995 The Woodland Traditions in Southern Ontario. *Revista de Arqueología Americana* 9: 83-138.
- Fox, William A.
1990 The Middle Woodland to Late Woodland Transition. In *The Archaeology of Southern Ontario to AD 1650*, edited by C. Ellis and N. Ferris, pp. 171-188. Occasional Publication Number 5. London Chapter, Ontario Archaeological Society, London, ON.
- Pope, J. H.
1877 *Illustrated historical atlas of the county of Halton, Ont.* Walker & Miles, Toronto, ON.

Lennox, Paul A., and William R. Fitzgerald

1990 The Culture History and Archaeology of the Neutral Iroquoians. In: *The Archaeology of Southern Ontario to A.D. 1650*. Occasional Publication of the London Chapter, Ontario Archaeological Society, Number 5: 405-456. London, ON.

Martin, S.W.J

2004 Lower Great Lakes Maize and Enchainment in the First Millennium A.D. *Ontario Archaeology* 77/78:135-159.

Mika, N. and H. Mika

1981 *Places in Ontario: Their Name Origins and History*. Volume III. Mika Publishing Company, Belleville, ON.

Ministry of Citizenship and Multiculturalism (MCM)

2011 *Standards and Guidelines for Consultant Archaeologists*, Ontario Ministry of Citizenship and Multiculturalism, Toronto, ON.

2025a Ontario Archaeological Sites Database. PastPortal.

2025b Archaeological Assessments completed within the Project Area or Within 50 metres of the Project Area Provided from the Ontario Public Register of Archaeological Reports, November 2025.

Ministry of Natural Resources and Forestry (MNRF)

2025 Make a Topographic Map. Accessed online at: https://www.lioapplications.lrc.gov.on.ca/MakeATopographicMap/index.html?viewer=Make_A_Topographic_Map.MATM&locale=en-US

Pearce, R.J.

2010 Southwestern Ontario: The First 12,000 Years. Accessed online at: <http://www.diggingontario.uwo.ca>.

Schmalz, Peter S.

1991 *The Ojibwa of Southern Ontario*. University of Toronto Press, Toronto, ON.

Smith, D.G.

1990 Iroquoian Societies in Southern Ontario: Introduction and Historic Overview. In C.J. Ellis and N. Ferris (Eds.), *The Archaeology of Southern Ontario to A.D. 1650*, pp. 279-290. Occasional Publication of the London Chapter, OAS, London, ON.

Smith, W.H.

1846 Smith's Canadian Gazetteer: Comprising Statistical and General Information Respecting All Parts of the Upper Province, or Canada West. Accessed online at:
<https://archive.org/stream/smithscanadianga00smit#page/n7/mode/1up>

Spence, M.W., Pihl, R.H., and Murphy, C.R.

1990 Cultural Complexes of the Early and Middle Woodland Periods. In Ellis, C.J. and N. Ferris (Eds.) *The Archaeology of Southern Ontario to A.D. 1650*. London, Ontario: Occasional Publication of the London Chapter, OAS, pp. 125-169.

Stothers, D.J. and R. Yarnell

1977 An Agricultural Revolution in the Lower Great Lakes. In *Geobotany*, edited by R. Moans, pp.209-232. Plenum, New York, NY.

Tremaine, Geo. R.

1858 *Tremaine's Map of the County of Halton, Canada West*. Toronto, ON.

Williamson, Ronald F.

1990 The Early Iroquoian Period of Southern Ontario. In: *The Archaeology of Southern Ontario to A.D. 1650*. Occasional Publication of the London Chapter, Ontario Archaeological Society, Number 5: 291-320. London, ON.

8.0 IMAGES



Image 1: Shows conditions for pedestrian survey.



Image 2: Shows conditions for pedestrian survey.



Image 3: Shows well weathered ploughed field with excellent visibility.



Image 4: Shows conditions for pedestrian survey.



Image 5: Shows conditions for test pit survey.



Image 6: Shows conditions for test pit survey.



Image 7: Isolated Findspots from left to right: P1 (L201), P2 (L202), and P3 (L203).

9.0 MAPS



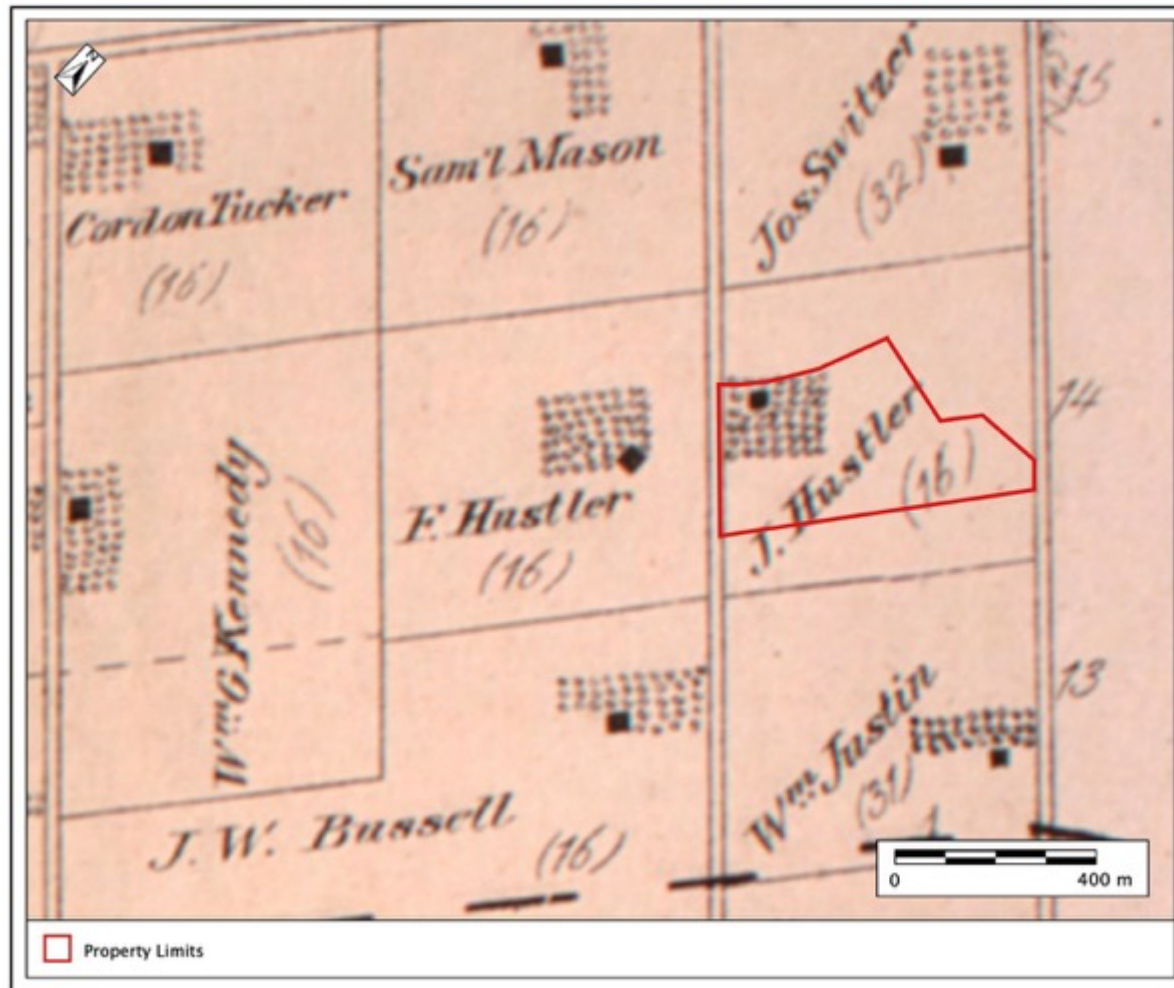
Map 1: General Location of Project Area (MNR 2025).



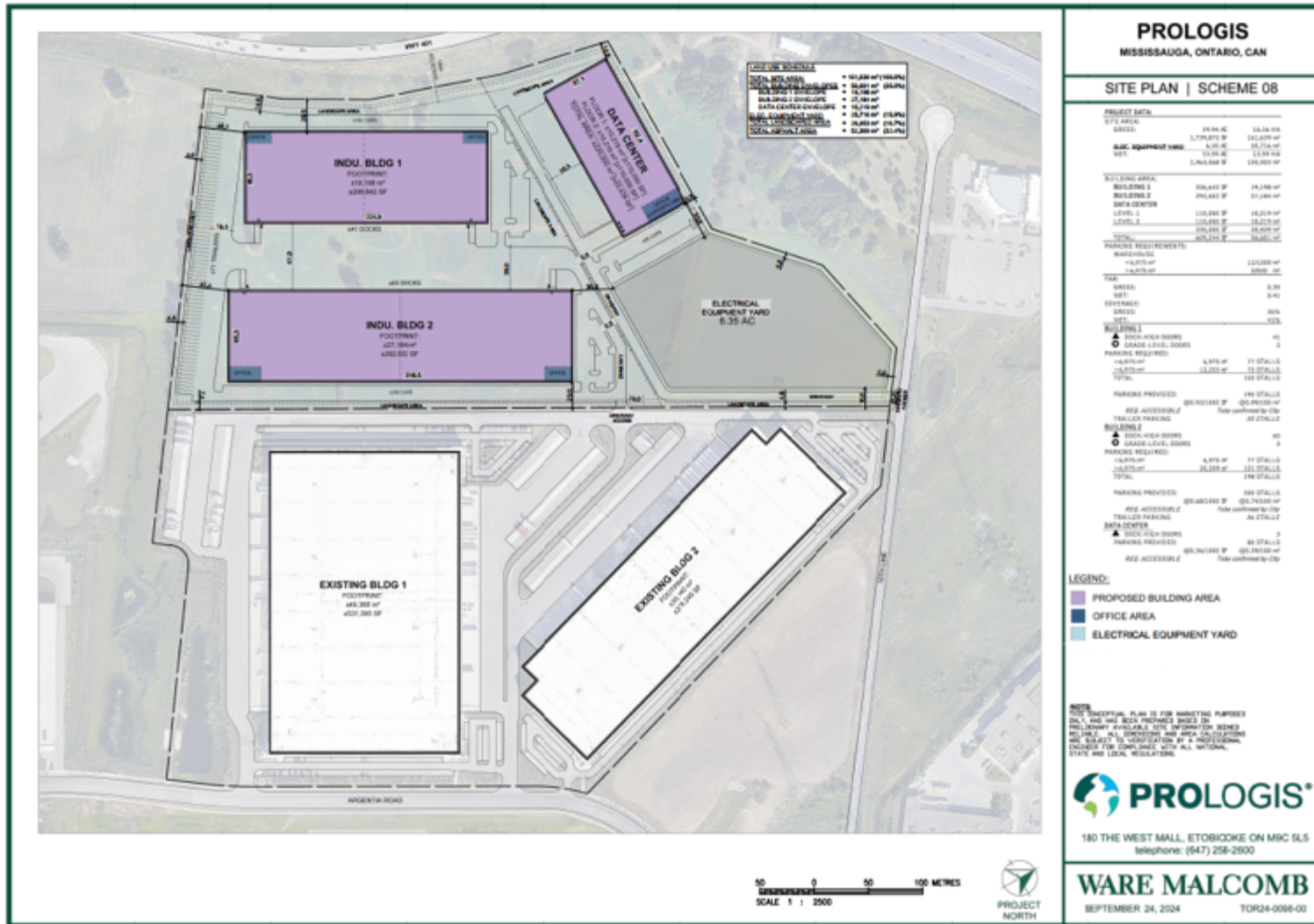
Map 2: Project Area Overlaid on Recent Aerial Imagery (MNR 2025).



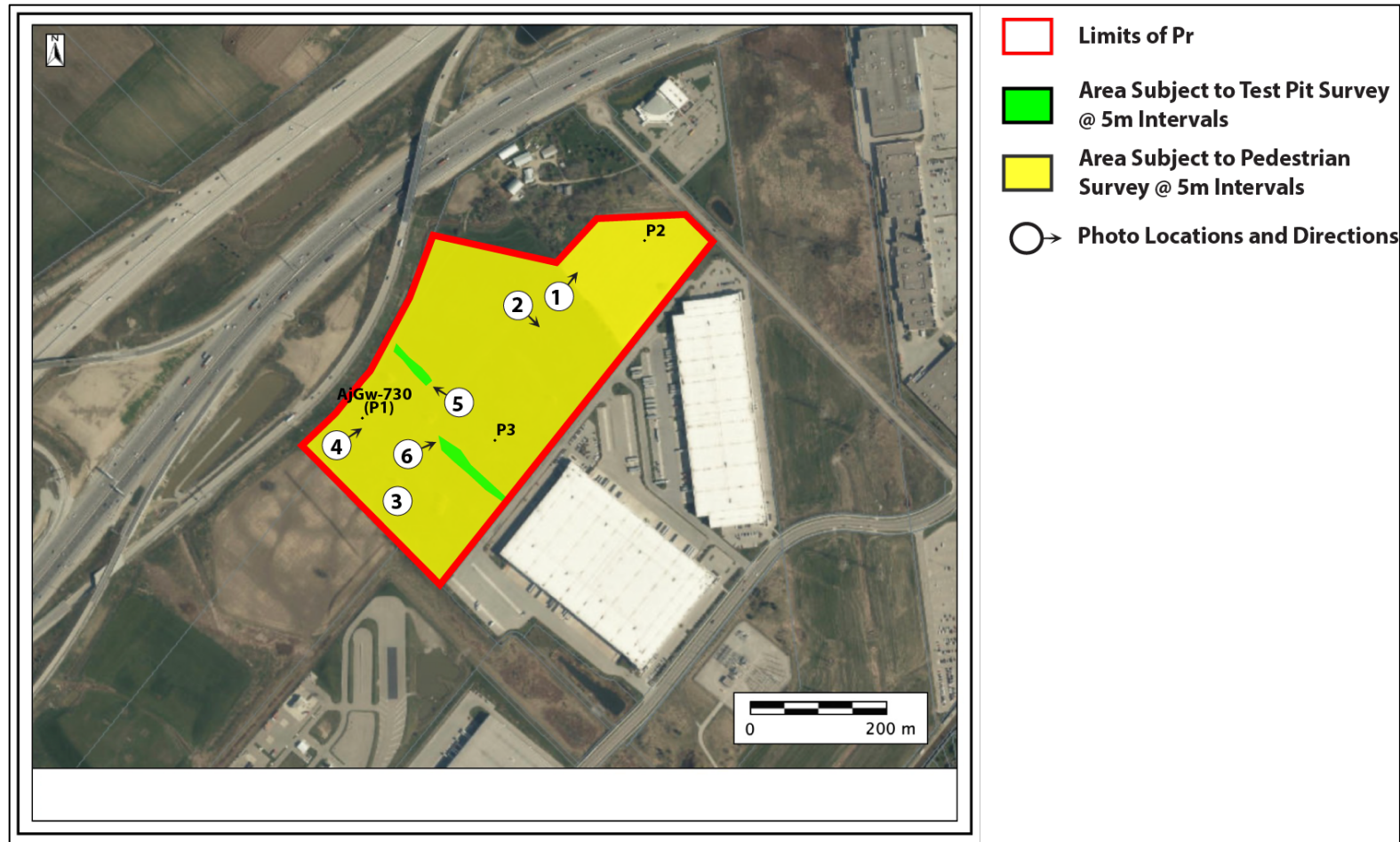
Map 3: Project Area Overlaid on 1860 Historical Atlas Map (Tremaine 1858).



Map 4: Project Area Overlaid on 1877 Historical Atlas Map (Pope 1878).



Map 5: Site Plan Provided by Proponent.



Map 6 : Results of the Stage 1 and 2 Archaeological Assessment.

APPENDIX A: STAGE 2 ARTIFACT CATALOGUE

Cat#	Prov	Stratum	Qty	Type	Material	TA	Notes
L201	P1 (AjGw-730)	Surface	1	Brewerton Side-Notched Projectile Point	Onondaga Chert		L = 35mm; Max W = 20mm; Max Th = 8mm.
L202	P2	Surface	1	Flake Fragment	Onondaga Chert		
L203	P3	Surface	1	Flake Fragment	Onondaga Chert		