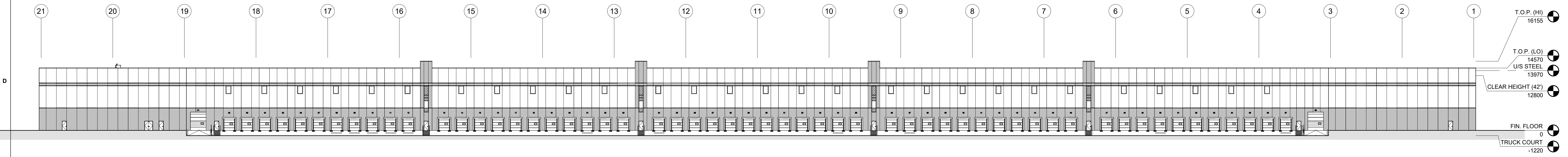
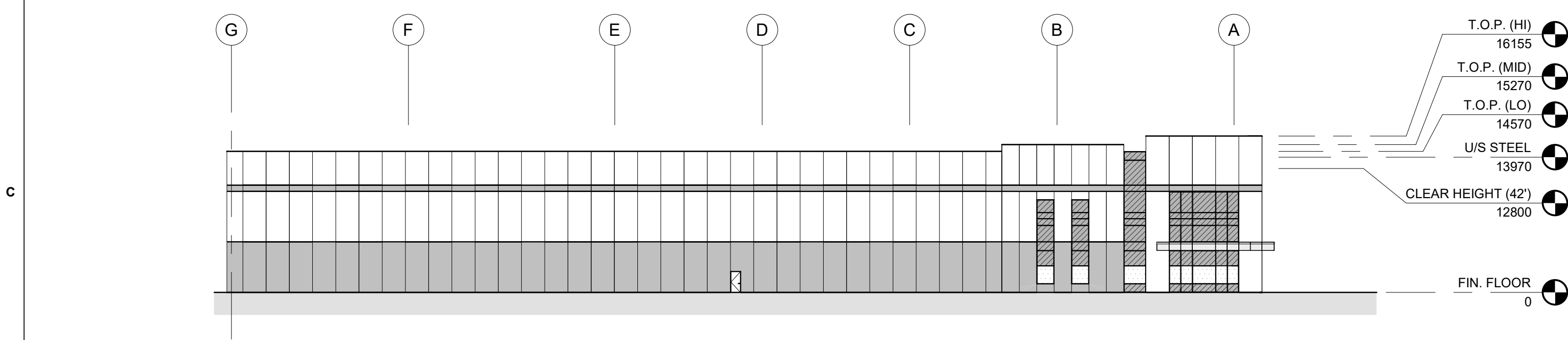


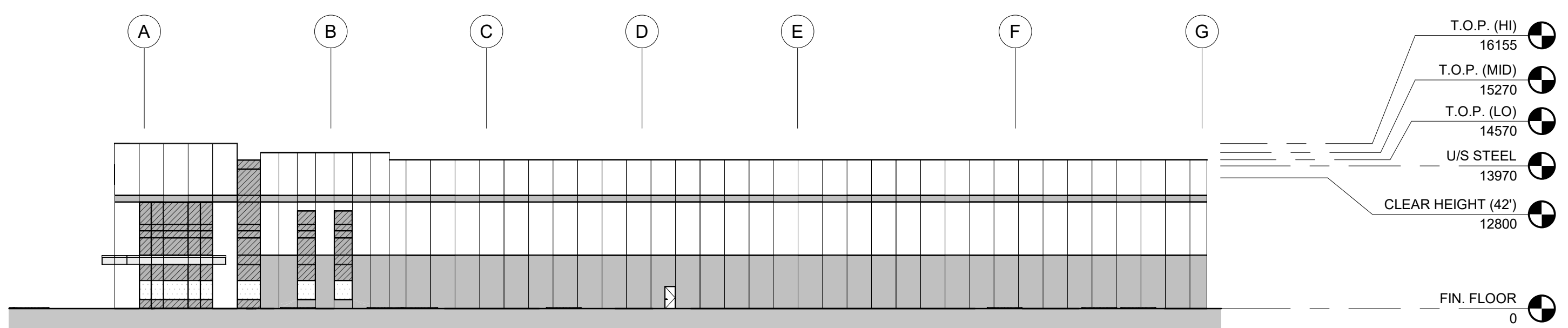
1 BUILDING DC5 SOUTH ELEVATION
A.202 Scale: 1 : 400



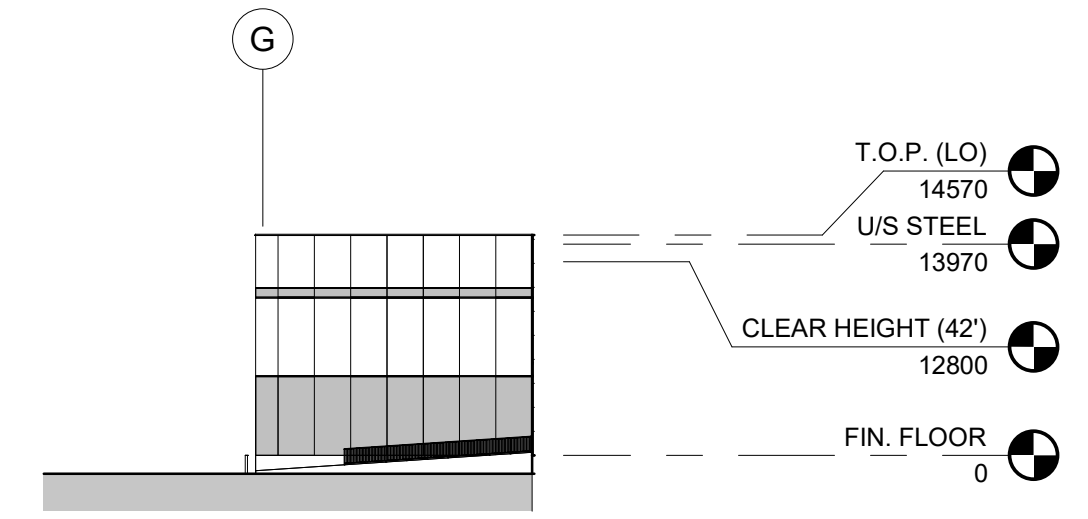
2 BUILDING DC5 NORTH ELEVATION
A.202 Scale: 1 : 400



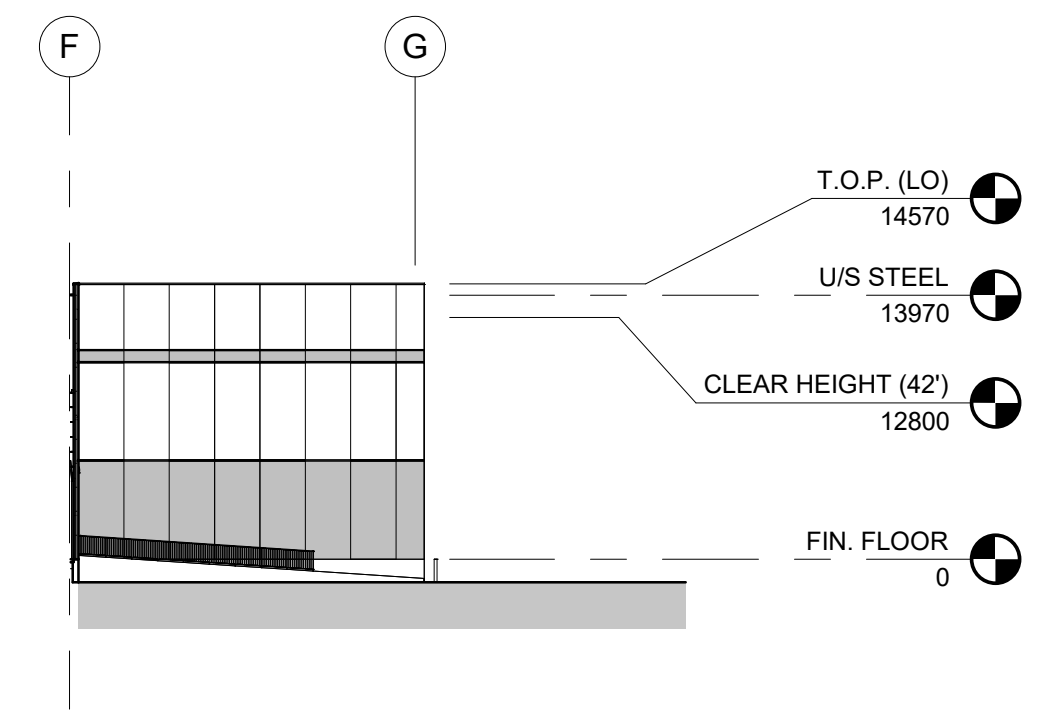
3 BUILDING DC5 WEST ELEVATION
A.202 Scale: 1 : 400



4 BUILDING DC5 EAST ELEVATION
A.202 Scale: 1 : 400



5 BUILDING DC5 WEST ELEVATION (INSIDE TRUCK COURT)
A.202 Scale: 1 : 500



6 BUILDING DC5 EAST ELEVATION (INSIDE TRUCK COURT)
A.202 Scale: 1 : 500



7 VIEW OF BUILDING DC5 AT SOUTH EAST CORNER
A.202 Scale:

NOTE: ARTIST RENDERING OF BUILDING ISSUED FOR MASSING AND BUILDING CHARACTER ONLY. REFER TO DRAWINGS FOR ALL SPECIFIC DIMENSIONS, GRADING, LIGHTING, LANDSCAPING, SIGNAGE, ETC.

*NOTE: PANELS SHALL RECEIVE HIGH-BUILD ACRYLIC COATING, SHERWIN WILLIAMS ULTRACRETE, ONE COAT PRIMER PLUS 2 FINISH COATS AS RECOMMENDED BY PAINT MANUFACTURER.

EXTERIOR WALLS TO INCLUDE 4 BASIC COLOURS, WITH ONE ADDITIONAL ACCENT COLOUR AS SHOWN ON EXTERIOR ELEVATIONS. NO TEXTURE.

**NOTE: G.C. TO PROVIDE ALTERNATE PRICE FOR PIGMENTED CONCRETE (STAINING) FOR EXTERIOR PRECAST WALL PANELS INSTEAD OF PAINTING.

***NOTE: WAREHOUSE INTERIOR WALL PAINTING TO RECEIVE ONE COAT OF FLAT LATEX PAINT - WHITE.

PETROFF

260 TOWN CENTRE BLVD.
SUITE 300
MARKHAM, ONTARIO
L3R 8H8
T 905.470.7000
F 905.470.2500
www.petroff.com

MATERIALS LEGEND AND GENERAL NOTES

A. REF ENLARGED ELEVATIONS FOR ADDITIONAL INFORMATION.

- ALUMINUM / PREFINISHED METAL
- PRECAST CONCRETE - (DARK) GRAY PAINT - ACCENT
- PRECAST CONCRETE - (LIGHT) GRAY PAINT - BASE
- GLAZING - SPANDREL IGU
- GLAZING - VISION IGU WITH VISUAL MARKERS**

***NOTE:
EXTERIOR BUILDING GLAZING TO INCLUDE SEALED GLASS UNITS PROVIDED WITH AN APPROVED VISUAL MARKER (CERAMIC FRIT DOT PATTERN) WITH A MAXIMUM SPACING OF 50mm X 50mm WITH A MINIMUM OF 6mm IN DIAMETER ON SURFACE #1 TYPICAL.

KEY PLAN

REV #	DATE	REVISION TITLE
1	AUG 15, 2025	ISSUED FOR SPA

PROJECT NO: 25026
DRAWN BY: TL
CHECKED BY: RCB

☒ NOT RELEASED FOR CONSTRUCTION
☐ RELEASED FOR CONSTRUCTION

PROJECT TITLE:
**7564 TENTH LINE WEST,
MISSISSAUGA, ON
TOR00394**

PROLOGIS
Prologis Inc. (Canada)
185 The West Mall, Suite 700, Toronto
647-258-2600

https://www.prologis.com

SHEET TITLE:
**BUILDING DC5 - OVERALL
BUILDING ELEVATIONS**

SEAL:

SHEET NO.
A.202