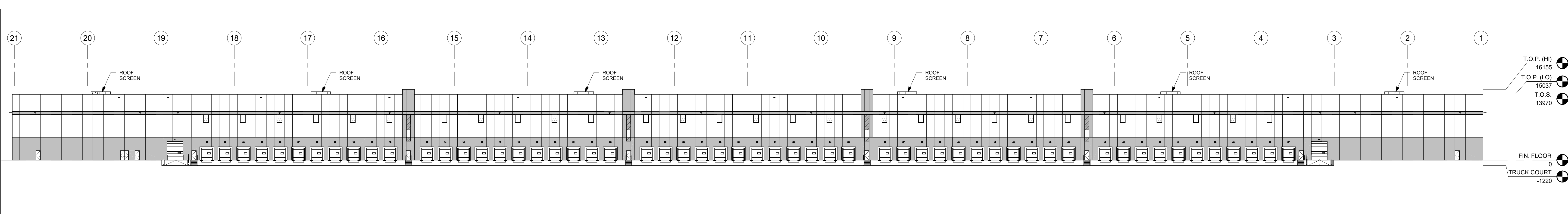
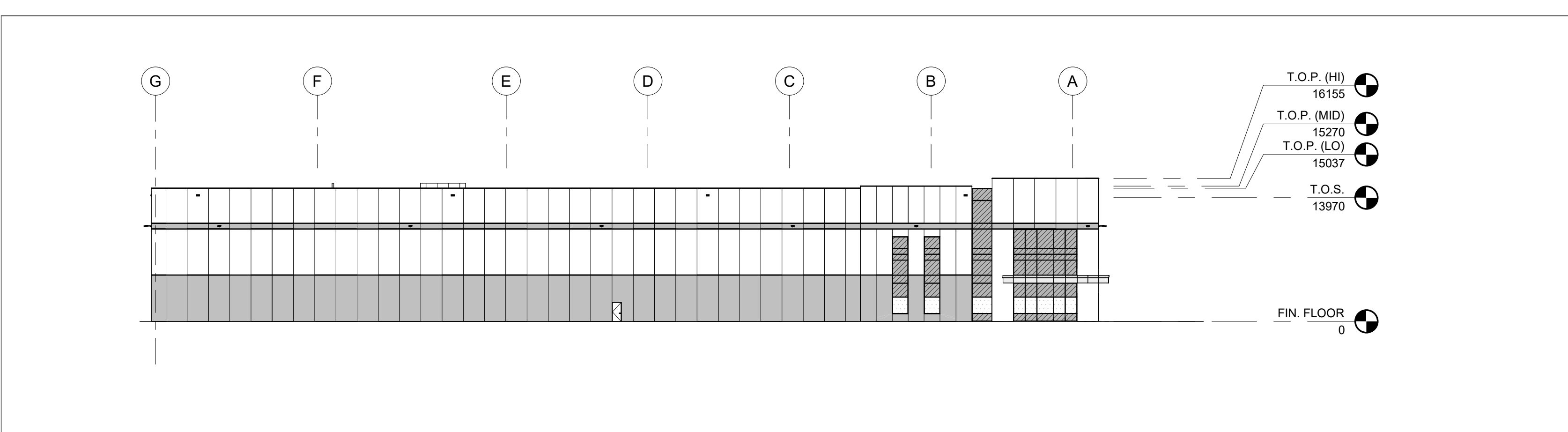


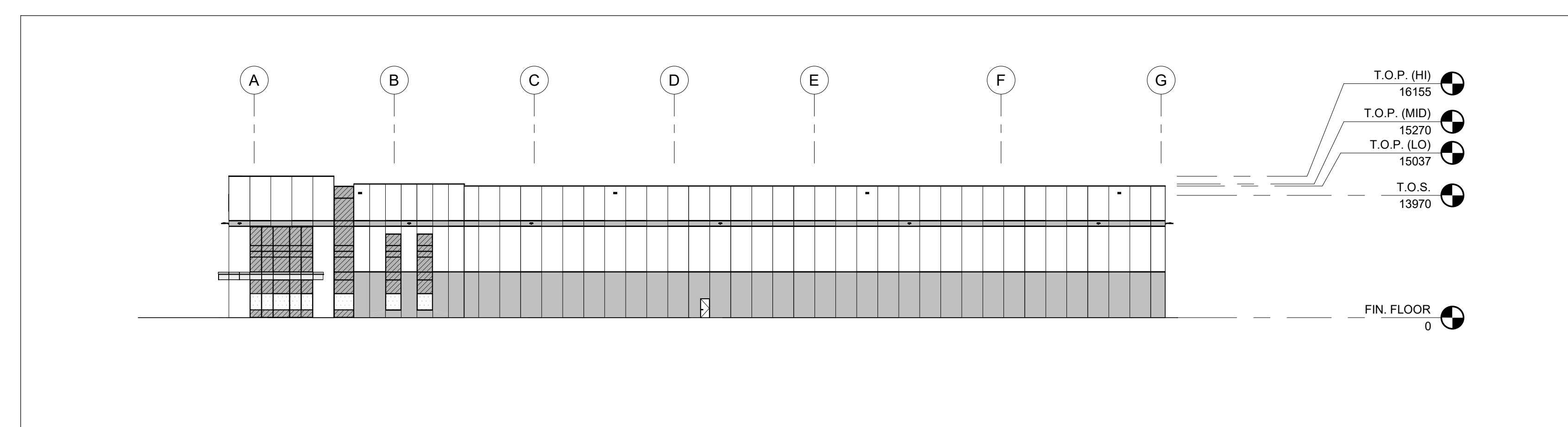
**1 DC5-SOUTH ELEVATION**  
 A202 Scale: 1 : 400



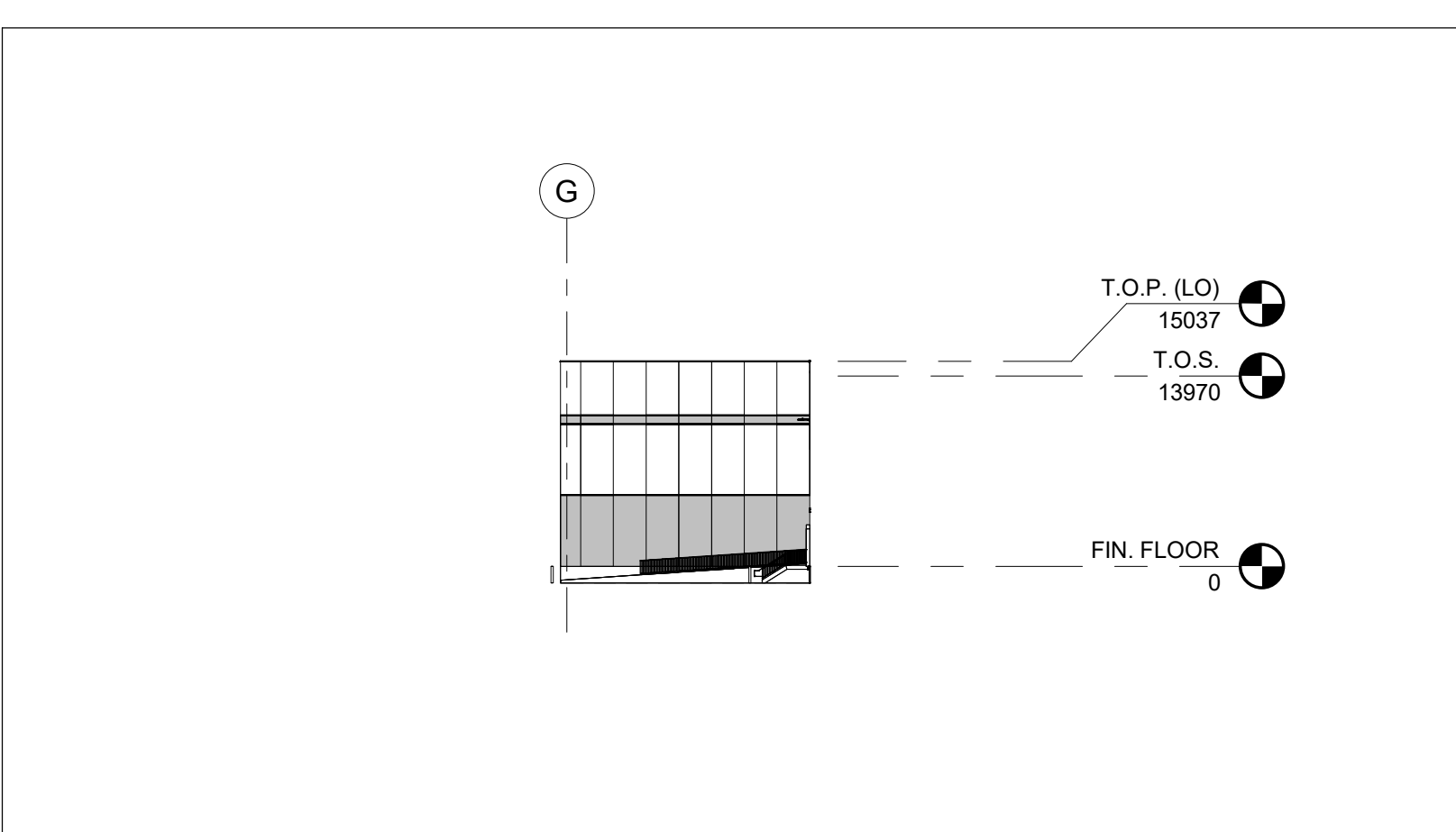
**2 DC5-NORTH ELEVATION**  
 A202 Scale: 1 : 400



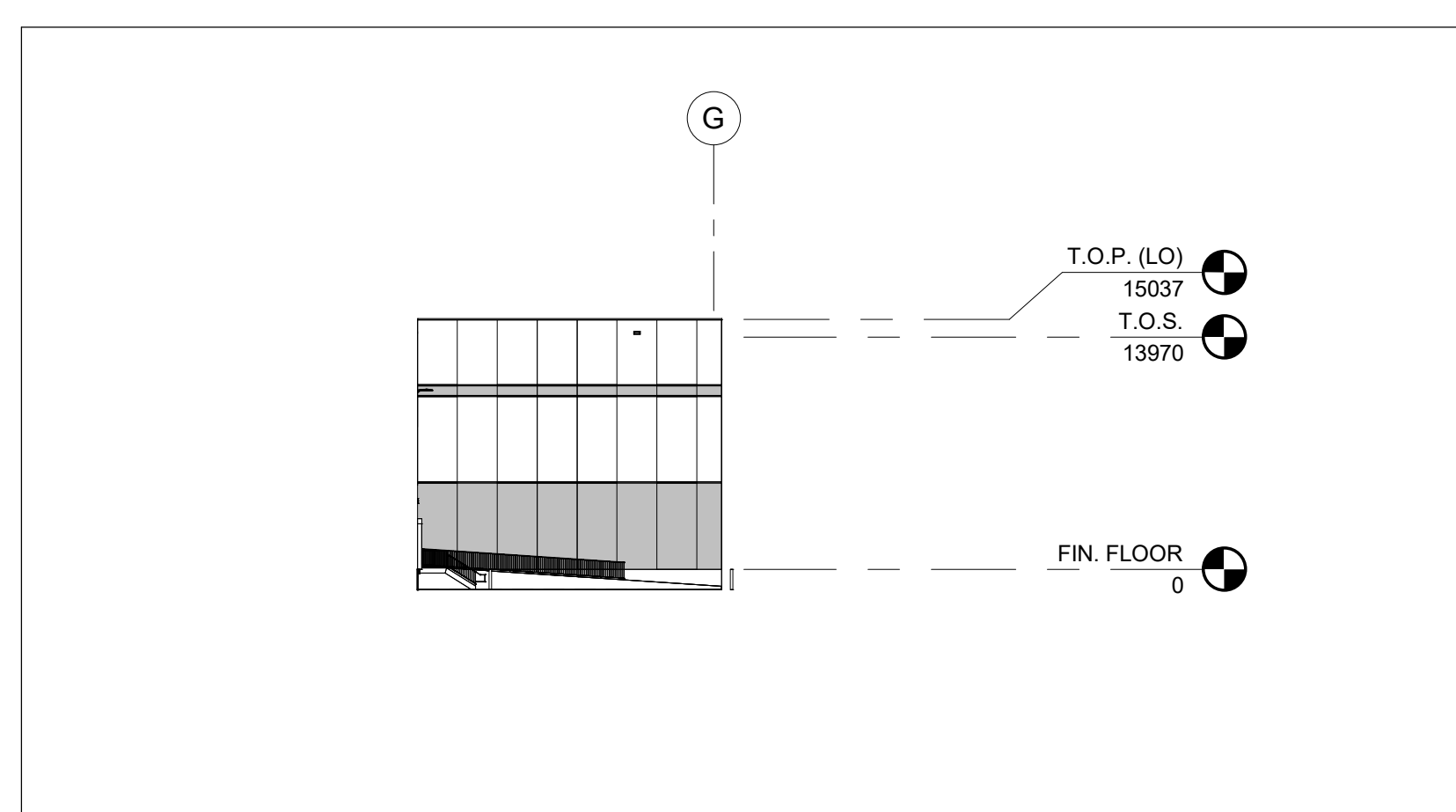
**3 DC5-WEST ELEVATION**  
 A202 Scale: 1 : 400



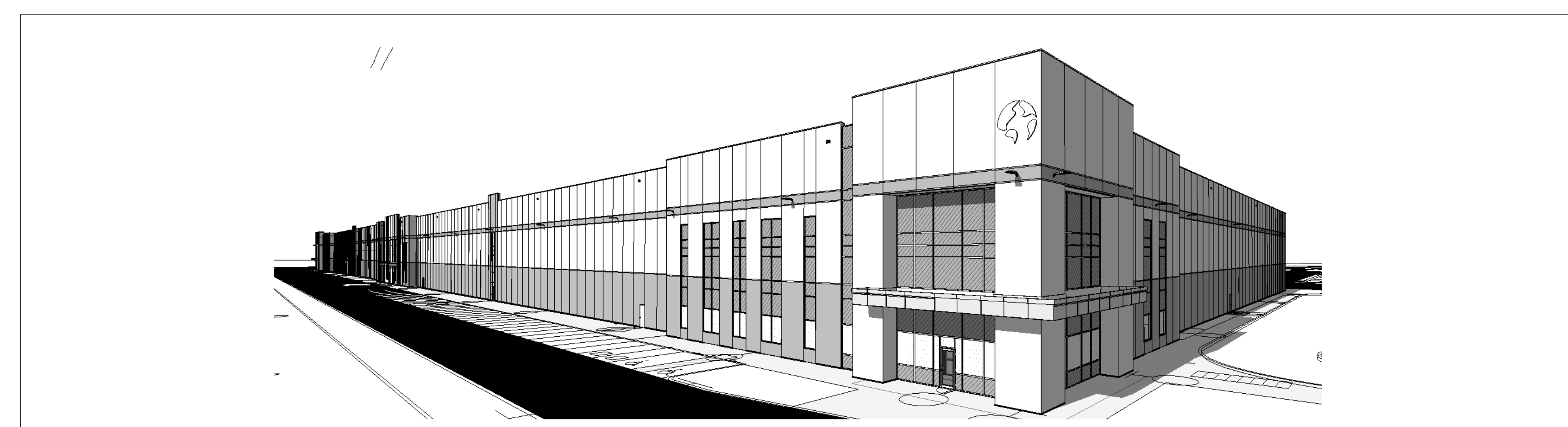
**4 DC5-EAST ELEVATION**  
 A202 Scale: 1 : 400



**5 DC5-NORTH-WEST ELEVATION**  
 A202 Scale: 1 : 500



**6 DC5-NORTH-EAST ELEVATION**  
 A202 Scale: 1 : 400



**7 DC5 - SOUTHEAST VIEW**  
 A202 Scale:

**MATERIALS LEGEND AND GENERAL NOTES**

- A. REF ENLARGED ELEVATIONS FOR ADDITIONAL INFORMATION.
- ALUMINUM / PREFINISHED METAL
  - PRECAST CONCRETE - (DARK) GRAY PAINT - ACCENT
  - PRECAST CONCRETE - (LIGHT) GRAY PAINT - BASE
  - GLAZING - SPANDREL IGU
  - GLAZING - VISION IGU WITH VISUAL MARKERS\*\*

\*\*\*NOTE:  
 EXTERIOR BUILDING GLAZING TO INCLUDE SEALED GLASS UNITS PROVIDED WITH AN APPROVED VISUAL MARKER (CERAMIC FRIT DOT PATTERN) WITH A MAXIMUM SPACING OF 50mm X 50mm WITH A MINIMUM OF 5mm IN DIAMETER ON SURFACE #1 TYPICAL.

REV #	DATE	REVISION TITLE
1	DEC 05, 2025	ISSUED FOR COORDINATION
2	2026-03-25	ISSUED FOR SPA RESUBMISSION

PROJECT NO: 25026  
 DRAWN BY: TL  
 CHECKED BY: RBC

NOT RELEASED FOR CONSTRUCTION  
 RELEASED FOR CONSTRUCTION

PROJECT TITLE:  
**0 ARGENTIA ROAD  
 MISSISSAUGA, ON  
 TOR000394**



SHEET TITLE:  
**BUILDING DC5 - OVERALL  
 BUILDING ELEVATIONS**

SEAL: ARCHITECTS  
 ALY HARDY  
 LICENSE  
 6768

SHEET NO.  
**A202**

NOTE: ARTIST RENDERING OF BUILDING ISSUED FOR MASSING AND BUILDING CHARACTER ONLY. REFER TO DRAWINGS FOR ALL SPECIFIC DIMENSIONS, GRADING, LIGHTING, LANDSCAPING, SIGNAGE, ETC.

\*\*NOTE: PANELS SHALL RECEIVE HIGH-BUILD ACRYLIC COATING, SHERWIN WILLIAMS ULTRACRETE. ONE COAT PRIMER PLUS 2 FINISH COATS AS RECOMMENDED BY PAINT MANUFACTURER.

EXTERIOR WALLS TO INCLUDE 4 BASIC COLOURS, WITH ONE ADDITIONAL ACCENT COLOUR AS SHOWN ON EXTERIOR ELEVATIONS. NO TEXTURE.

\*\*\*NOTE: G.C. TO PROVIDE ALTERNATE PRICE FOR PIGMENTED CONCRETE (STAINING) FOR EXTERIOR PRECAST WALL PANELS INSTEAD OF PAINTING.

\*\*\*NOTE: WAREHOUSE INTERIOR WALL PAINTING TO RECEIVE ONE COAT OF FLAT LATEX PAINT - WHITE.