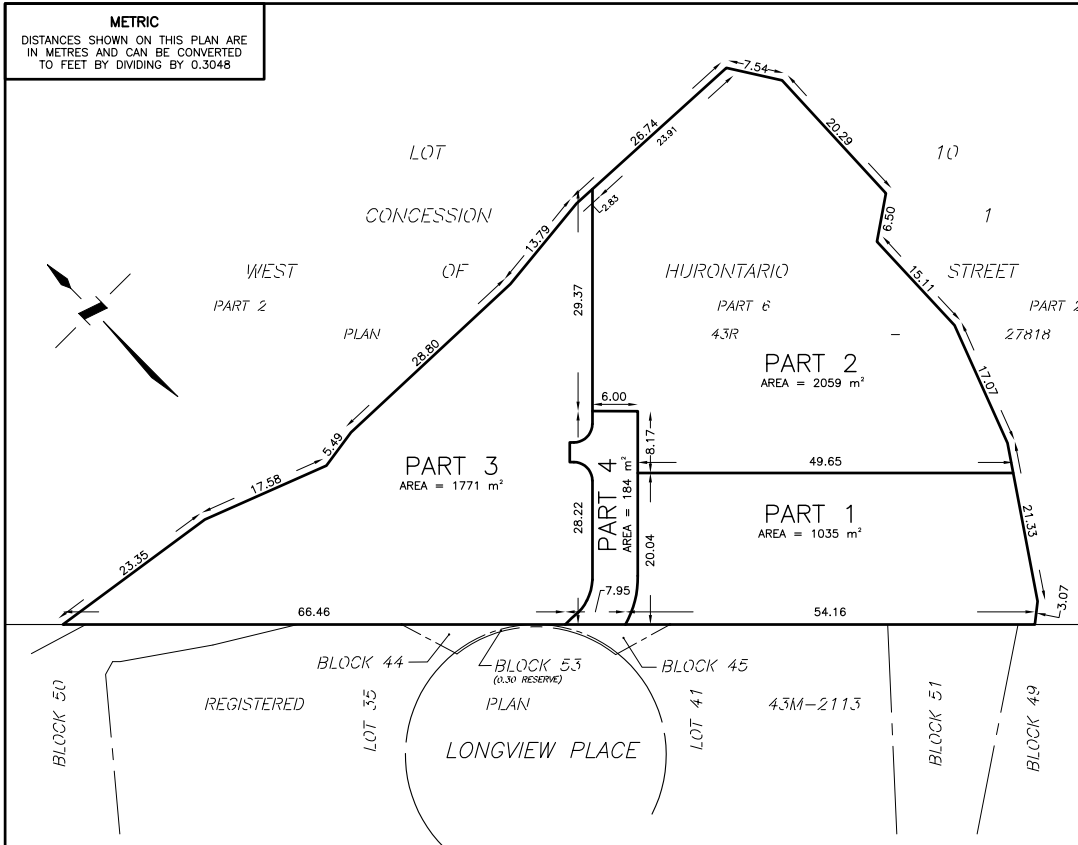


# **METRIC**

DISTANCES SHOWN ON THIS PLAN ARE  
IN METRES AND CAN BE CONVERTED  
TO FEET BY DIVIDING BY 0.3048



**KEY PLAN**  
NOT TO SCALE

SKETCH OF PROPOSED SEVERANCE OF  
**6721-6781 LONGVIEW PLACE**  
BEING  
PART OF LOT 10, CONCESSION 1  
WEST OF HURONTARIO STREET  
(ORIGINALLY IN TOWNSHIP OF TORONTO)  
**CITY OF MISSISSAUGA**  
REGIONAL MUNICIPALITY OF PEEL

SCALE 1 : 500  
10 5 0 10 20 30 metres

## **CAUTION**

THIS IS NOT A PLAN OF SURVEY AND SHALL NOT BE USED  
EXCEPT FOR THE PURPOSE INDICATED IN THE TITLE BLOCK.

DATE: DECEMBER 21, 2023 FILE No. 9915-23-SK

## **TARASICK McMILLAN KUBICKI LIMITED**

ONTARIO LAND SURVEYORS  
4181 SLADEVIEW CRESCENT, UNIT 42, MISSISSAUGA, ON L5L 5R2  
TEL. 905-569-8849 FAX 905-569-3160  
E-MAIL: office@tmksurveyors.com

PART	AREA [m²]	REMARKS
1	1035	LANDS TO BE SEVERED
2	2059	
3	1771	LANDS TO BE RETAINED
4	184	