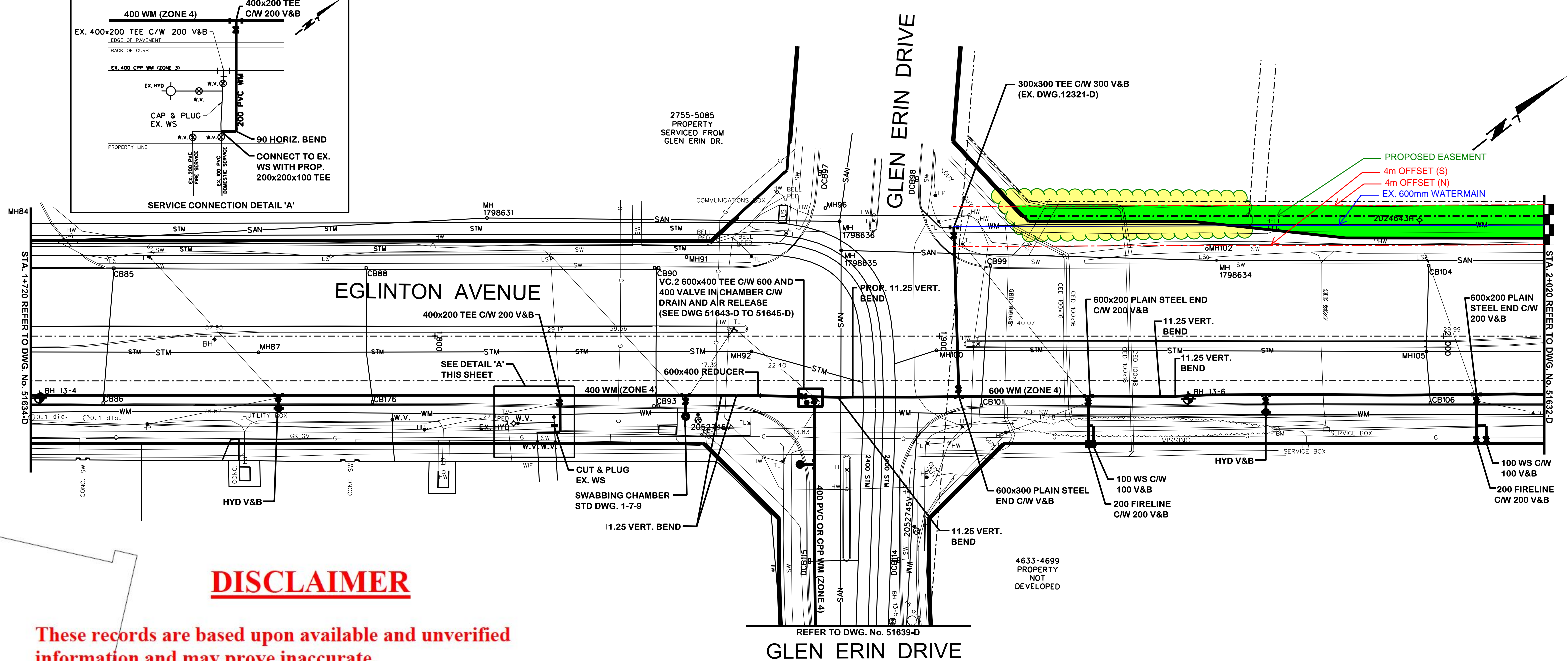


SERVICE DATA					
SERVICE	DATE	INIT.	SERVICE	DATE	INIT.
SAN SEWERS	DEC. 6, 2013	C.S.	GAS MAINS	JULY 9, 2013	C.S.
STORM SEWERS	DEC. 6, 2013	C.S.	BELL U/G CABLE	JULY 9, 2013	C.S.
WATER MAINS	DEC. 6, 2013	C.S.	HYDRO U/G CABLE	JULY 22, 2013	C.S.
TRANSIT	DEC. 6, 2013	C.S.	HYDRO ONE	JULY 22, 2013	C.S.
PARKS & REC.			CTV	JULY 30, 2013	C.S.
ONT. CLEAN WATER			COMMUNIC. CABLES	JULY 18, 2013	C.S.

REVISIONS		
NO.	DATE	DETAILS
5	FEB. 19, 2016	AS-RECORDED
4	JULY 24, 2014	ISSUED FOR CONSTRUCTION
3	JULY 04, 2014	ADDENDUM NO. 2
2	FEB. 28, 2014	ISSUED PLUCK (EOM-14-08)
1	JUNE 17, 2014	ISSUED FOR TENDER



**DISCLAIMER**

These records are based upon available and unverified information and may prove inaccurate. The Region of Peel disclaims any responsibility should these records be relied upon to the detriment of any person.

- NOTE:
- FOR GENERAL NOTES, DETAILS AND LEGEND SEE GENERAL NOTES DWG. 51626-D
  - BACKFILL THROUGH INTERSECTION STA 1+850 TO 1+920 TO BE UNSHRINKABLE FILL IN ACCORDANCE WITH DETAIL. SEE GENERAL NOTES DWG. 51626-D
  - A MINIMUM OF 0.6m HORIZONTAL (1.0m FOR BORING) AND 0.3m VERTICAL CLEARANCE TO GAS MAINS MUST BE MAINTAINED. VERTICAL CLEARANCE MUST BE INCREASED TO 0.6m FOR MAINS NPS 12 AND LARGER.
  - CONTRACTOR TO CONFIRM SURVEY LAYOUT OF FIRELINES AND WATER SERVICES WITH ADJACENT DEVELOPERS

LEGEND:

	BH - no.	BOREHOLE
--	----------	----------



**General Notes**

All Driveways Are ASPHALT Unless Otherwise Noted

All Water And Sanitary Service Locations Are Approximate And Must Be Located Accurately In The Field

All Horizontal And Vertical Bends Are In Degrees

All Pipes Size In mm

20C Existing Water Service, Size In mm

WS20 Proposed Water Service, Size In mm

B.M. No. 075125018 Elev. 173.408m

Description Brass cap set in the sidewalk at the northeast corner of Eglinton Avenue West and Glen Erin Drive, 15.3m north of the centreline of Eglinton Avenue West and 20.7m east of the centreline of Glen Erin Drive.

Location NORTHING: 4823167.755, EASTING: 604026.821

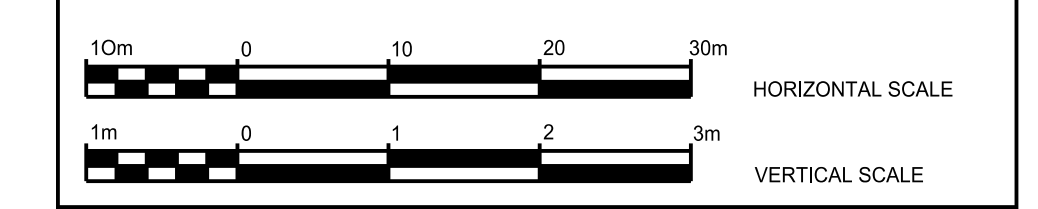
The Contractor Is Responsible For Locating And Protecting All Existing Utilities Prior To And During Construction. Location Of Existing Utilities Approximate Only. To Be Verified In Field By Contractor.

Designed by	_____	Approved by	_____
-------------	-------	-------------	-------

**NOTICE TO CONTRACTOR**

48 HOURS PRIOR TO COMMENCING WORK NOTIFY THE FOLLOWING

THE REGIONAL MUNICIPALITY OF PEEL	CABLE TELEVISION/FIBREOPTIC PROVIDERS:
CITY OF MISSISSAUGA WORKS DEPT.	BELL CANADA
CITY OF BRAMPTON WORKS DEPT.	ENERSOURCE TELECOM
TOWN OF CALEDON WORKS DEPT.	HYDRO ONE TELECOM
BELL CANADA	ROGERS CABLE
ENBRIDGE INCORPORATED-GAS DISTRIBUTION	ALLSTREAM
ONTARIO MINISTRY OF TRANSPORTATION	PSN (PUBLIC SECTOR NETWORK)
ONTARIO CLEAN WATER AGENCY	FUTUREWAY (FCI BROK/BAND)
HYDRO ONE NETWORKS	
ENERSOURCE, HYDRO MISSISSAUGA	
HYDRO ONE BRAMPTON	



**Region of Peel**  
Working for you

**EGLINTON AVENUE**  
(FROM WINSTON CHURCHILL BLVD. TO ERIN MILLS PKWY.)

**400mm WATERMAIN**

STA. 1+720 TO STA. 2+020

CAD Area	Area	Z-32/Z-39	Project No. 13-1117 & 13-1118
Checked by	C.S.	EX. ROAD ELEV.	Drawn by
Date	FEB. 2016	Sheet	9 of 18
Plan No.	<b>51633-D</b>		

