

SERVICE DATA					
SERVICE	DATE	INIT.	SERVICE	DATE	INIT.
SAN SEWERS	DEC. 6, 2013	C.S.	GAS MAINS	JULY 9, 2013	C.S.
STORM SEWERS	DEC. 6, 2013	C.S.	BELL U/G CABLE	JULY 9, 2013	C.S.
WATER MAINS	DEC. 6, 2013	C.S.	HYDRO U/G CABLE	JULY 22, 2013	C.S.
TRANSIT	DEC. 6, 2013	C.S.	HYDRO ONE	JULY 22, 2013	C.S.
PARKS & REC.			CTV	JULY 30, 2013	C.S.
ONT. CLEAN WATER			COMMUNIC. CABLES	JULY 18, 2013	C.S.

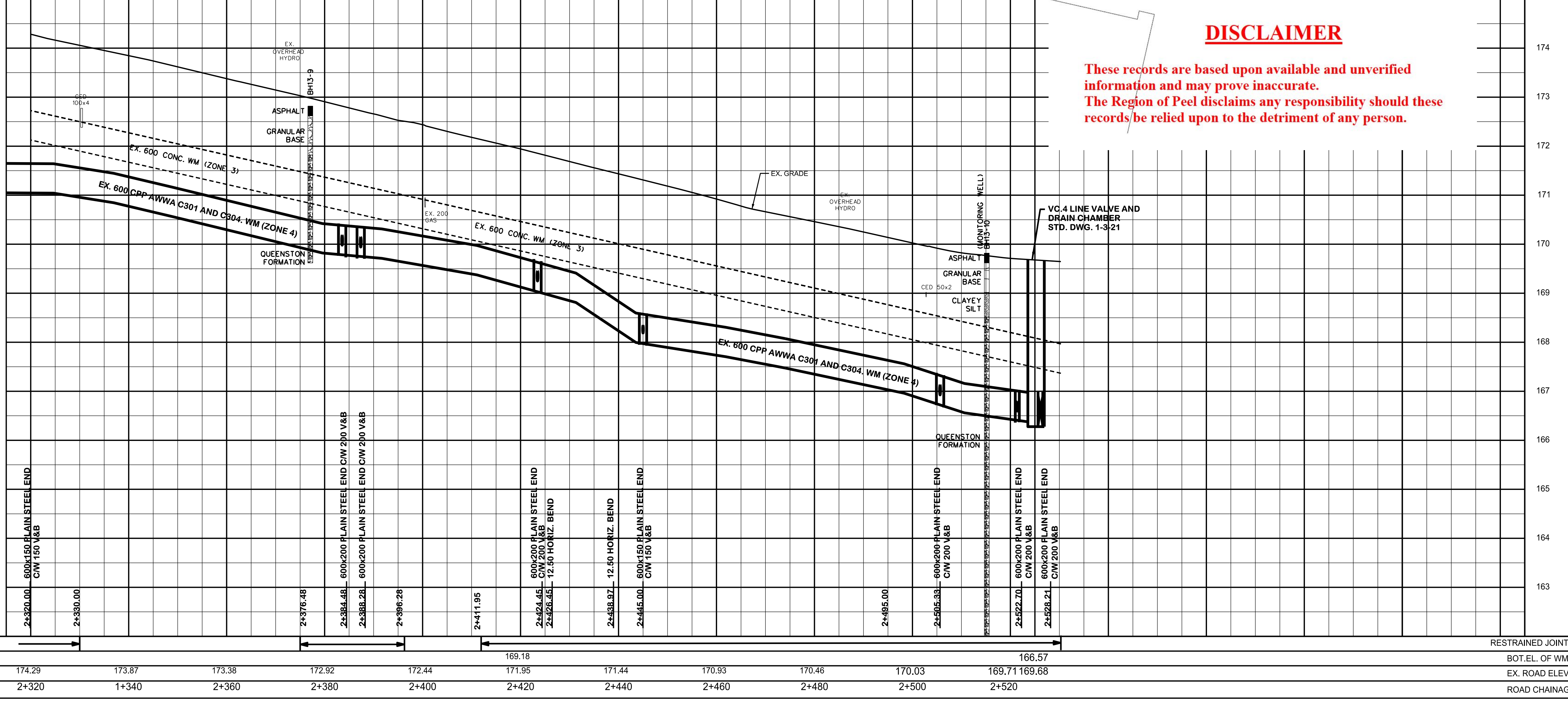
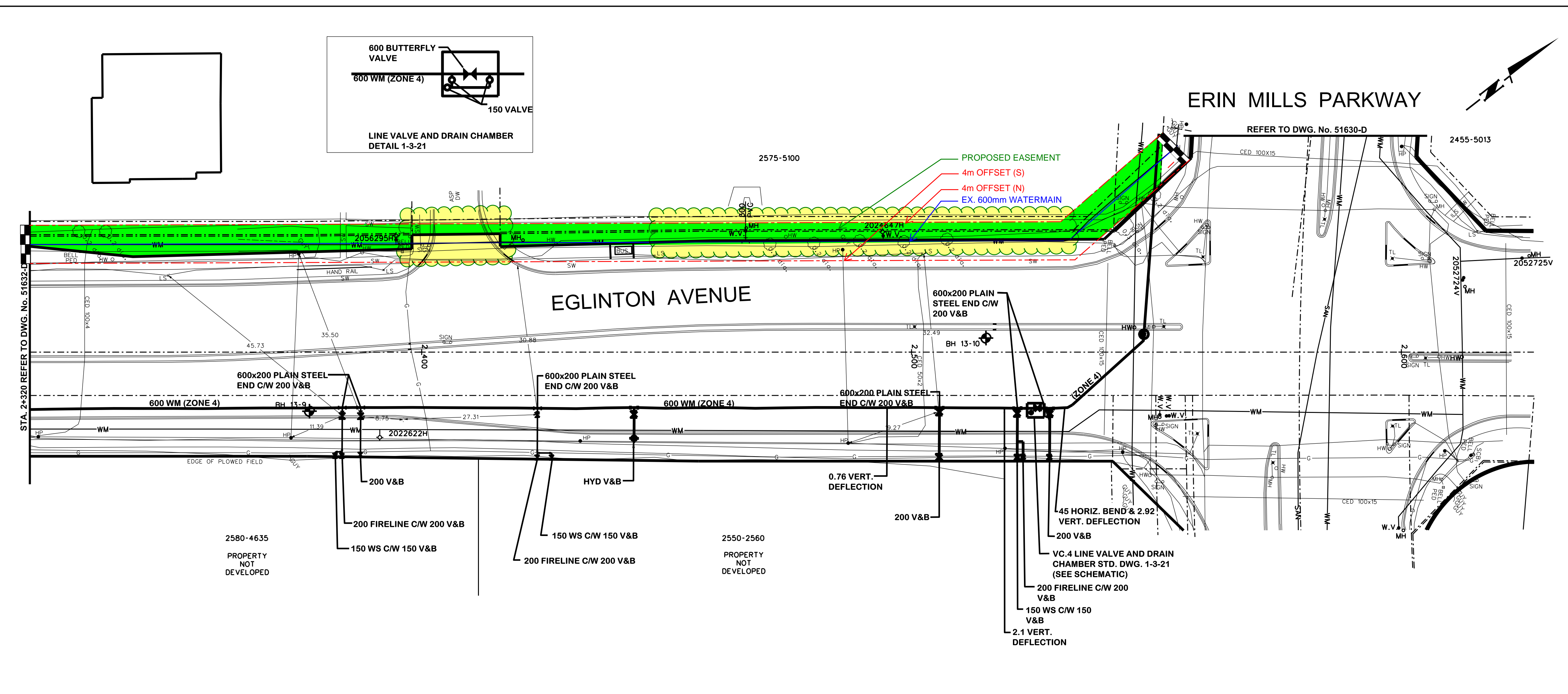
REVISIONS		
DATE	DETAILS	INIT.
FEB 28, 2014	ISSUED PUCC (ECM-14-06)	C.S.
JUNE 17, 2014	ISSUED FOR TENDER	C.S.
JULY 24, 2014	ISSUED FOR CONSTRUCTION	C.S.
FEB 19, 2016	AS-RECORDED	C.S.

- NOTE:**
- FOR GENERAL NOTES, DETAILS AND LEGEND SEE GENERAL NOTES DWG. 51626-D
  - A MINIMUM OF 0.6m HORIZONTAL (1.0m FOR BORING) AND 0.3m VERTICAL CLEARANCE TO GAS MAINS MUST BE MAINTAINED. VERTICAL CLEARANCE MUST BE INCREASED TO 0.6m FOR MAINS NPS 12 AND LARGER.
  - CONTRACTOR TO CONFIRM SURVEY LAYOUT OF FIRELINES AND WATER SERVICES WITH ADJACENT DEVELOPERS

**LEGEND:**

⊕ BH - no. BOREHOLE



**DISCLAIMER**

These records are based upon available and unverified information and may prove inaccurate. The Region of Peel disclaims any responsibility should these records be relied upon to the detriment of any person.

**General Notes**

All Driveways Are ASPHALT Unless Otherwise Noted  
 All Water And Sanitary Service Locations Are Approximate And Must Be Located Accurately In The Field  
 All Horizontal And Vertical Bends Are In Degrees  
 All Pipes Size In mm  
 20C Existing Water Service, Size In mm  
 WS20 Proposed Water Service, Size In mm  
 B.M. No. 075125018 Elev. 173.408m  
 Description Brass cap set in the sidewalk at the northeast corner of Eglinton Avenue West and 20.7m east of the centreline of Glen Erin Drive.  
 Location NORTHING: 482197.755, EASTING: 604028.821  
 The Contractor Is Responsible For Locating And Protecting All Existing Utilities Prior To And During Construction. Location Of Existing Utilities Approximate Only. To Be Verified In Field By Contractor.

Designed by: *Chid.* Approved by: *[Signature]*

**NOTICE TO CONTRACTOR**

48 HOURS PRIOR TO COMMENCING WORK NOTIFY THE FOLLOWING

THE REGIONAL MUNICIPALITY OF PEEL  
 CITY OF MISSISSAUGA WORKS DEPT.  
 CITY OF BRAMPTON WORKS DEPT.  
 TOWN OF CALEDON WORKS DEPT.  
 BELL CANADA  
 ENBRIDGE INCORPORATED-GAS DISTRIBUTION  
 ONTARIO MINISTRY OF TRANSPORTATION  
 ONTARIO CLEAN WATER AGENCY  
 HYDRO ONE NETWORKS  
 ENERSOURCE, HYDRO MISSISSAUGA  
 HYDRO ONE BRAMPTON

CABLE TELEVISION/FIBROPTIC PROVIDERS:  
 BELL CANADA  
 ENERSOURCE TELECOM  
 HYDRO ONE TELECOM  
 ROGERS CABLE  
 ALLSTREAM  
 PSN (PUBLIC SECTOR NETWORK)  
 FUTUREWAY (FCI BROADBAND)

10m 0 10 20 30m HORIZONTAL SCALE  
 1m 0 1 2 3m VERTICAL SCALE

**Region of Peel**  
 Working for you

**EGLINTON AVENUE**  
 (FROM WINSTON CHURCHILL BLVD. TO ERIN MILLS PKWY.)

**600mm WATERMAIN**

STA. 2+320 TO STA. 2+530

BOT.EL. OF WM.	CAD Area	Area	Z-32/Z-39	Project No.	13-1117
EX. ROAD ELEV.	Checked by	C.S.	Drawn by	D.P.	
ROAD CHAINAGE	Date	FEB. 2016	Sheet	6 of 18	Plan No. 51631-D