

SERVICE DATA					
SERVICE	DATE	INIT.	SERVICE	DATE	INIT.
SAN SEWERS	DEC. 6, 2013	C.S.	GAS MAINS	JULY 9, 2013	C.S.
STORM SEWERS	DEC. 6, 2013	C.S.	BELL U/G CABLE	JULY 9, 2013	C.S.
WATER MAINS	DEC. 6, 2013	C.S.	HYDRO U/G CABLE	JULY 22, 2013	C.S.
TRANSIT.			HYDRO ONE	JULY 22, 2013	C.S.
PARKS & REC.			CTV	JULY 30, 2013	C.S.
ONT. CLEAN WATER			COMMUNIC. CABLES	JULY 18, 2013	C.S.

REVISIONS		
DATE	DETAILS	INIT.
FEB 28, 2014	ISSUED PUCC (ECM-14-08)	C.S.
JUNE 17, 2014	ISSUED FOR TENDER	C.S.
JULY 24, 2014	ISSUED FOR CONSTRUCTION	C.S.
SEPT. 24, 2014	ISSUED FOR REVISION	C.S.
FEB. 19, 2016	AS-RECORDED	C.S.

- NOTE:**
- FOR GENERAL NOTES, DETAILS AND LEGEND SEE GENERAL NOTES DWG. 51626-D
 - BACKFILL THROUGH INTERSECTION STA 2+210 TO 2+270 TO BE UNSHRINKABLE FILL IN ACCORDANCE WITH DETAIL. SEE GENERAL NOTES DWG. 51626-D
 - A MINIMUM OF 0.6m HORIZONTAL (1.0m FOR BORING) AND 0.3m VERTICAL CLEARANCE TO GAS MAINS MUST BE MAINTAINED. VERTICAL CLEARANCE MUST BE INCREASED TO 0.6m FOR MAINS NPS 12 AND LARGER.
 - CONTRACTOR TO CONFIRM SURVEY LAYOUT OF FIRELINES AND WATER SERVICES WITH ADJACENT DEVELOPERS

LEGEND:

BH - no. BOREHOLE



General Notes

All Driveways Are ASPHALT Unless Otherwise Noted
 All Water And Sanitary Service Locations Are Approximate And Must Be Located Accurately In The Field
 All Horizontal And Vertical Bends Are In Degrees
 All Pipes Size In mm
 20C Existing Water Service, Size In mm
 WS20 Proposed Water Service, Size In mm
 B.M. No. 075125018 Elev. 173.408m
 Description Brass cap set in the sidewalk at the northeast corner of Eglinton Avenue West and Glen Erin Drive, 15.3m north of the centreline of Eglinton Avenue West and 20.7m east of the centreline of Glen Erin Drive.
 Location NORTHING: 482197.755, EASTING: 604026.821
 The Contractor Is Responsible For Locating And Protecting All Existing Utilities Prior To And During Construction. Location Of Existing Utilities Approximate Only. To Be Verified In Field By Contractor.

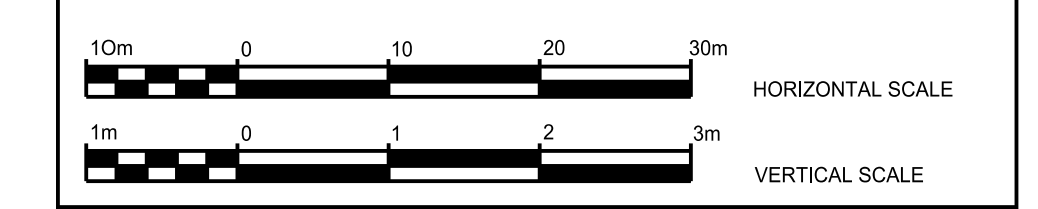
Designed by _____

Approved by _____

NOTICE TO CONTRACTOR

48 HOURS PRIOR TO COMMENCING WORK NOTIFY THE FOLLOWING

THE REGIONAL MUNICIPALITY OF PEEL	CABLE TELEVISION/FIBREOPTIC PROVIDERS:
CITY OF MISSISSAUGA WORKS DEPT.	BELL CANADA
CITY OF BRAMPTON WORKS DEPT.	ENERSOURCE TELECOM
TOWN OF CALEDON WORKS DEPT.	HYDRO ONE TELECOM
BELL CANADA	ROGERS CABLE
ENBRIDGE INCORPORATED-GAS DISTRIBUTION	ALISTREAM
ONTARIO MINISTRY OF TRANSPORTATION	PSN (PUBLIC SECTOR NETWORK)
ONTARIO CLEAN WATER AGENCY	FUTUREWAY (FCI BROK/BAND)
HYDRO ONE NETWORKS	
ENERSOURCE, HYDRO MISSISSAUGA	
HYDRO ONE BRAMPTON	



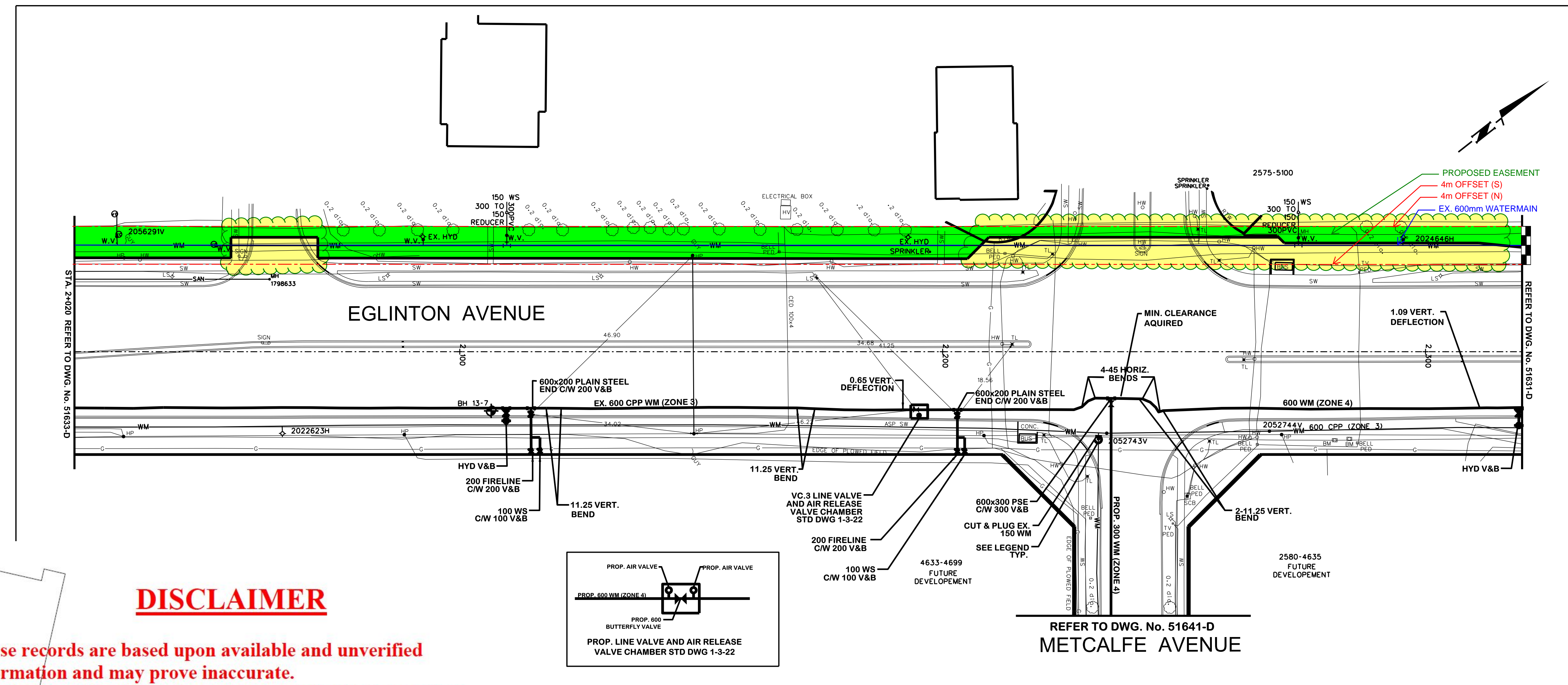
Region of Peel
Working for you

EGLINTON AVENUE
(FROM WINSTON CHURCHILL BLVD. TO ERIN MILLS PKWY.)

600mm WATERMAIN

STA. 2+020 TO STA. 2+320

CAD Area	Area	Project No.
Z-32/Z-39		13-1117
Checked by	Drawn by	
C.S.	D.P.	
Date	Sheet	Plan No.
FEB. 2016	8 of 18	51632-D



DISCLAIMER

These records are based upon available and unverified information and may prove inaccurate. The Region of Peel disclaims any responsibility should these records be relied upon to the detriment of any person.

