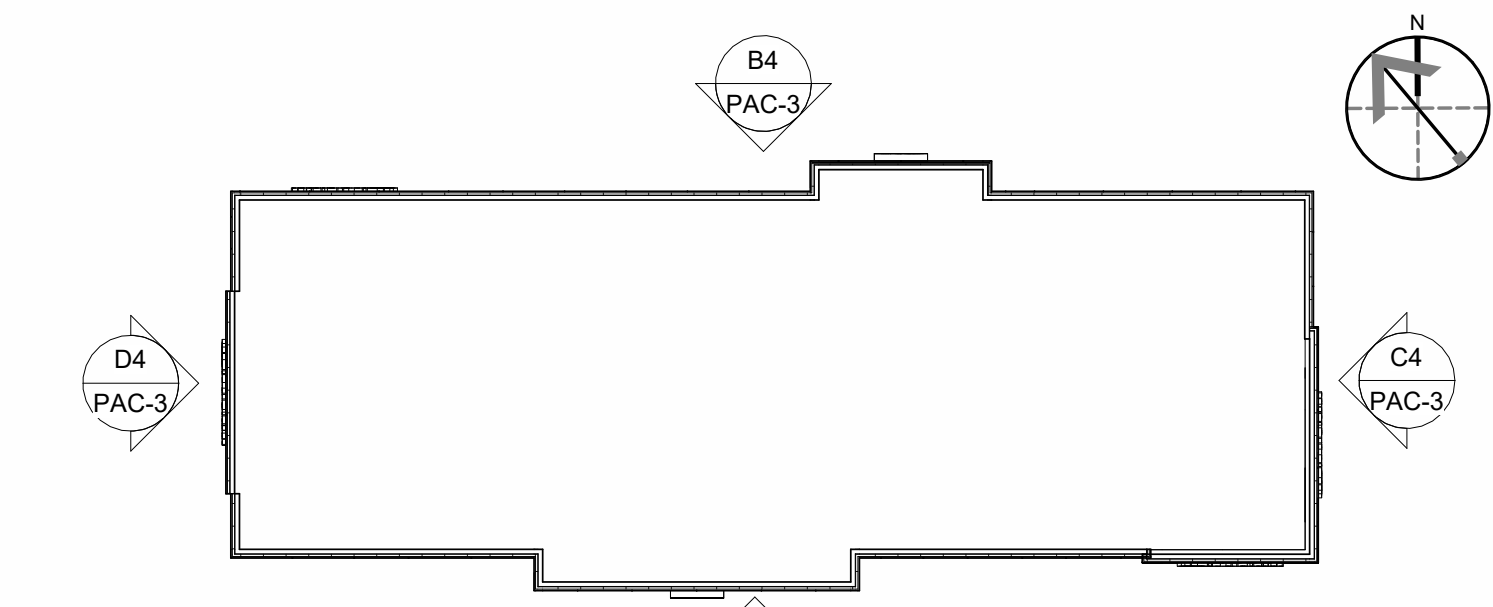


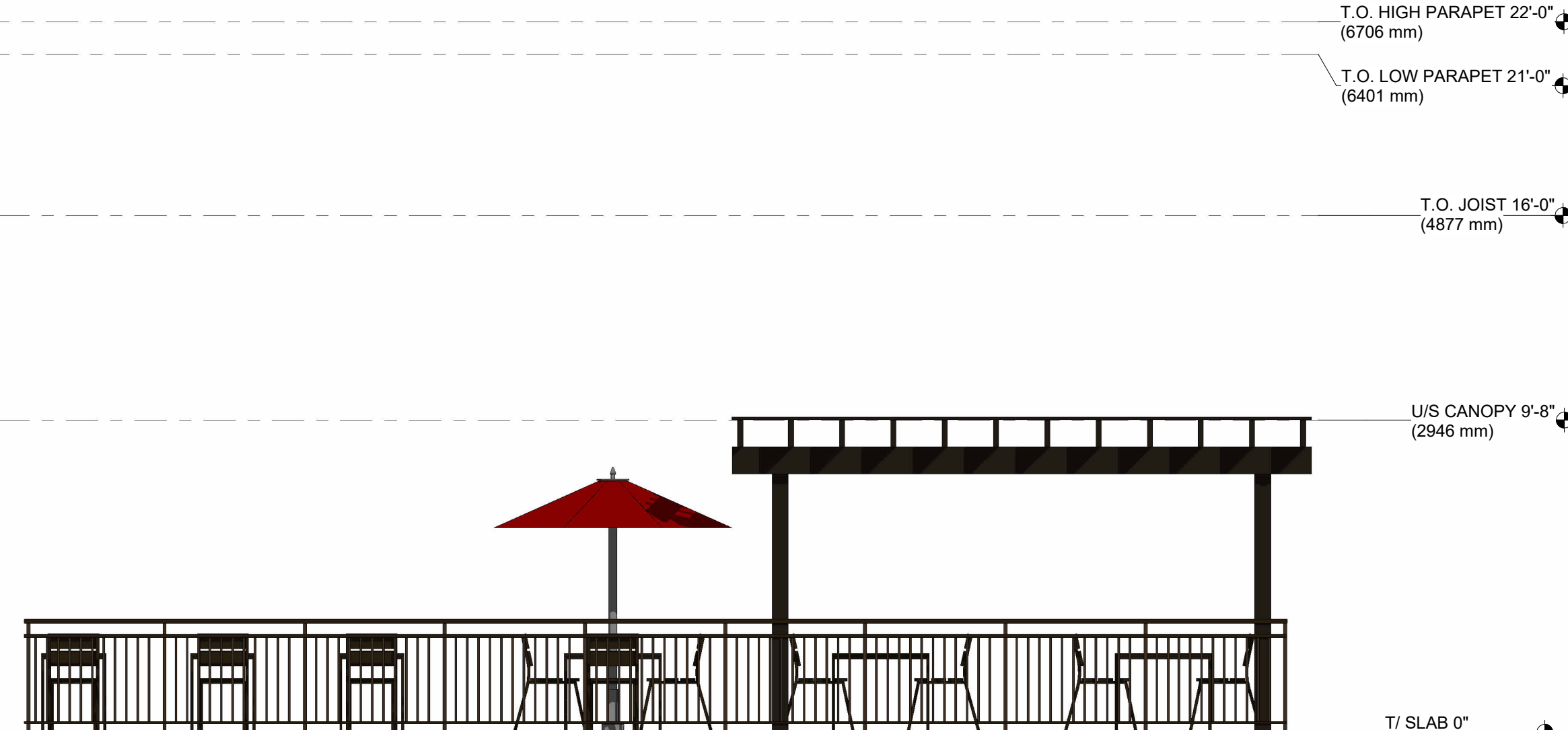
EXTERIOR FINISHES LEGEND

ELEVATION NOTES:
BIRD FRIENDLY GLAZING WILL BE PROVIDED ON ALL WINDOWS UNDER 30"

KEY PLAN



D4 NORTH ELEVATION
1/4" = 1'-0"



D1 OPC ELEVATION
1/4" = 1'-0"

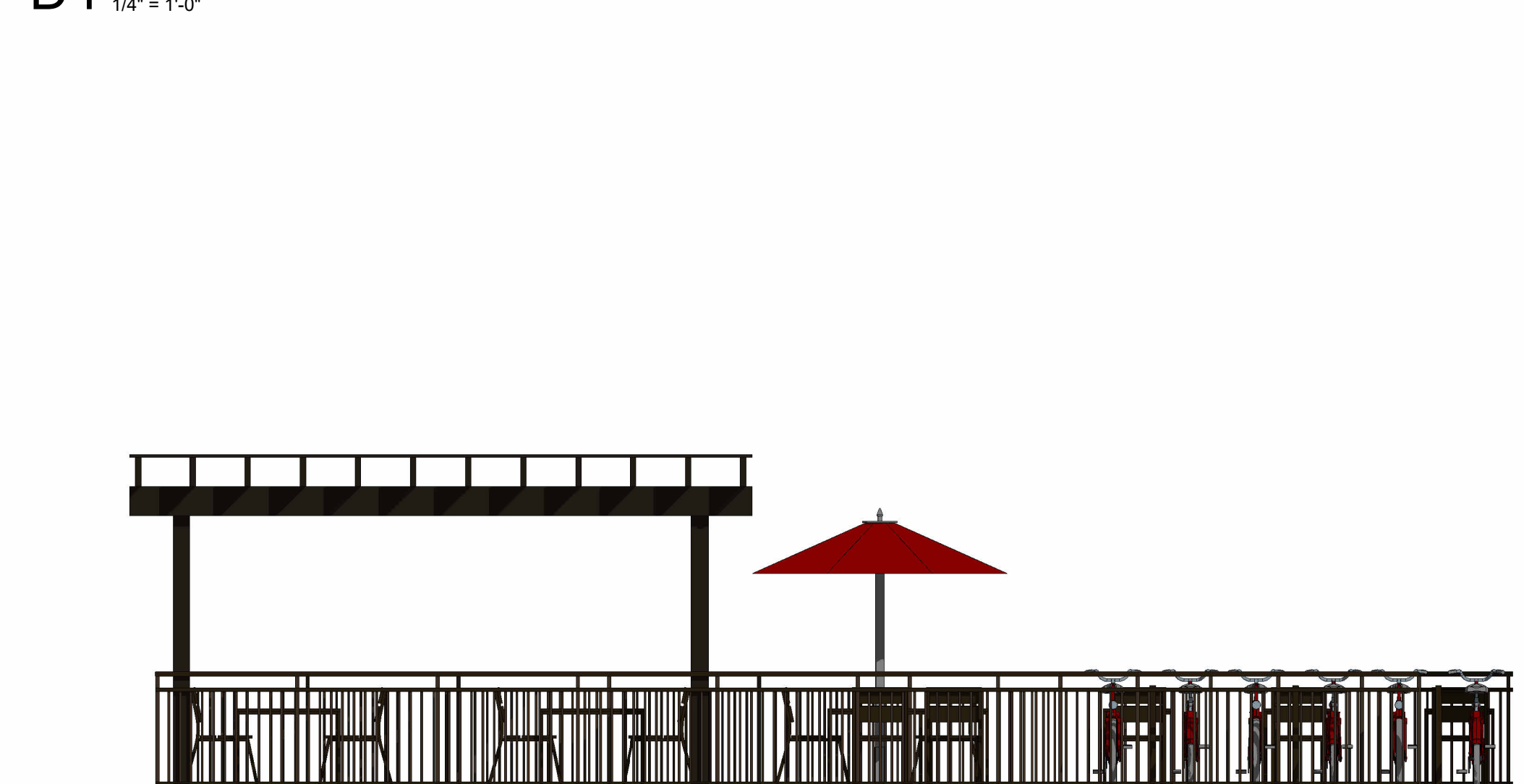
T.O. HIGH PARAPET 22'-0"
(6706 mm)
T.O. LOW PARAPET 21'-0"
(6401 mm)
T.O. JOIST 16'-0"
(4877 mm)

U/S CANOPY 9'-8"
(2946 mm)

T/ SLAB 0"
(0 mm)

U/S CANOPY 9'-8"
(2946 mm)

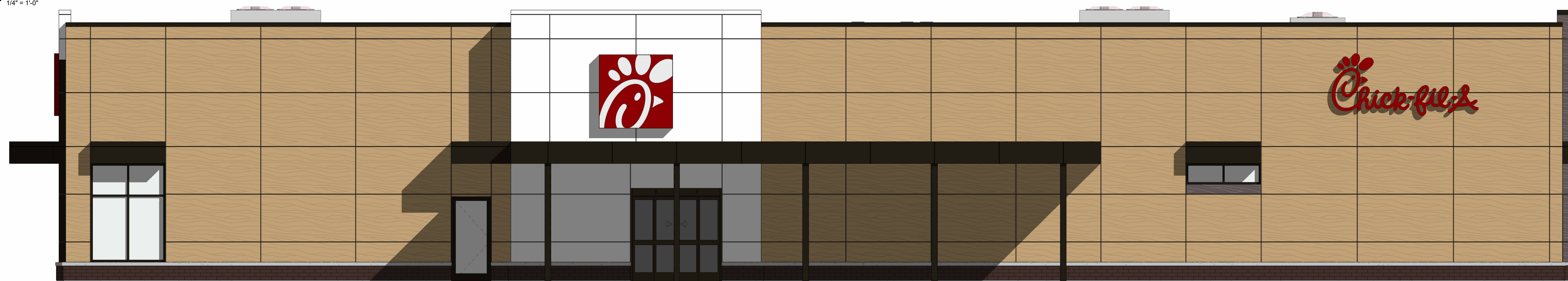
T/ SLAB 0"
(0 mm)



C4 SOUTH ELEVATION
1/4" = 1'-0"



B4 EAST ELEVATION
1/4" = 1'-0"



A4 WEST ELEVATION
1/4" = 1'-0"

T.O. HIGH PARAPET 22'-0"
(6706 mm)
T.O. LOW PARAPET 21'-0"
(6401 mm)
T.O. JOIST 16'-0"
(4877 mm)
U/S CANOPY 9'-8"
(2946 mm)
T/ SLAB 0"
(0 mm)

T.O. HIGH PARAPET 22'-0"
(6706 mm)
T.O. LOW PARAPET 21'-0"
(6401 mm)
T.O. JOIST 16'-0"
(4877 mm)
U/S CANOPY 9'-8"
(2946 mm)
T/ SLAB 0"
(0 mm)



Chick-fil-A

Chick-fil-A
5200 Buffington Road
Atlanta, Georgia
30349-2998

PETROFF PARTNERSHIP ARCHITECTS
PETROFF

10 AVIVA WAY, SUITE 400
MARKHAM ONTARIO CANADA L6G 0G1
TEL. 905.470.7000. FAX. 905.470.2500



CHICK-FIL-A
Erin Mills TC
5100 Erin Mills Parkway
Mississauga, ON,

FSR#30088

BUILDING TYPE / SIZE: IPO2 LS
RELEASE: 25.08
PRINTED FOR:
PROJECT STATUS
REVISION SCHEDULE
NO. DATE DESCRIPTION
2 01/28/2026 ISSUED FOR ZBA/SPA

APPLICATION # PAM 25-93
CONSULTANT PROJECT # 25806
DATE 01/28/2026

DRAWN BY: Author
Information contained on this drawing and in all digital files produced for above named project may not be reproduced in any manner without express written or verbal consent from authorized project representatives.

EXTERIOR ELEVATIONS

SHEET NUMBER
PAC-3

3/2/2026 2:24:47 PM C:\Users\asheshk\Documents\30088_Erin Mills Town Centre FSU_ARC_Asheshk\HM5CP.rvt LS-30088-PAC-3-EXTERIOR ELEVATIONS