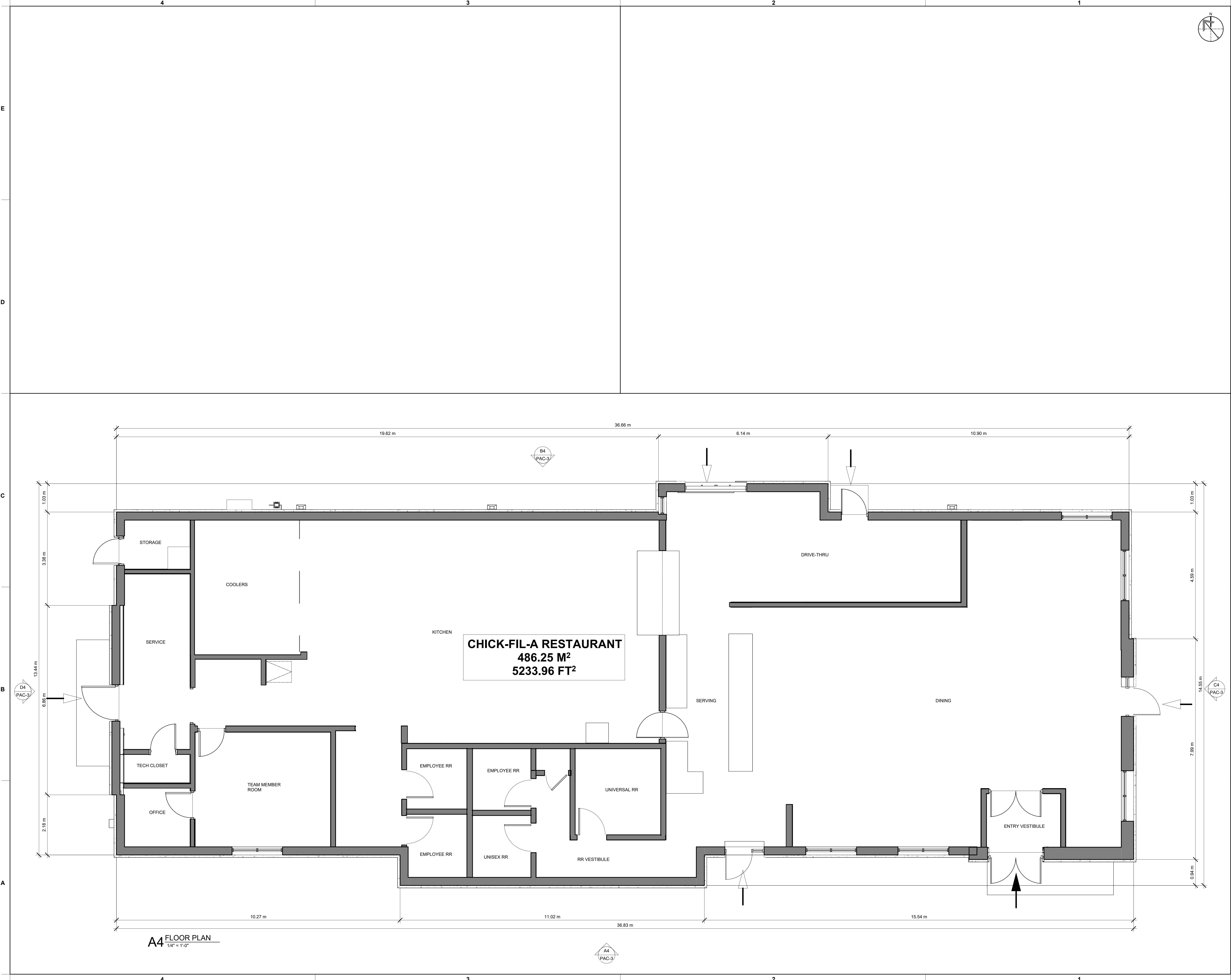


2/20/2026 1:48:40 PM C:\Users\ashelk\Documents\30088_Erin Mills Town Centre FSU_ARC_Ashelk\HM5CP.rvt
LS-30088-PAC-1-FLOOR PLAN



A4 FLOOR PLAN
1/4" = 1'-0"



Chick-fil-A

Chick-fil-A
5200 Buffington Road
Atlanta, Georgia
30349-2998

PETROFF PARTNERSHIP ARCHITECTS
PETROFF

10 AVIVA WAY SUITE 400
MARKHAM ONTARIO CANADA L6G 0G1
TEL. 905.470.7000 FAX. 905.470.2500



CHICK-FIL-A
Erin Mills TC
5100 Erin Mills Parkway
Mississauga, ON,

FSR#30088

BUILDING TYPE / SIZE: IPO2 LS
RELEASE: 25.08

PRINTED FOR:
PROJECT STATUS

REVISION SCHEDULE		
NO.	DATE	DESCRIPTION
2	01/28/2026	ISSUED FOR ZBA/SFA

APPLICATION # PAM 25-93
CONSULTANT PROJECT # 25806
DATE 01/28/2026

DRAWN BY AS
Information contained on this drawing and in all digital files produced for above named project may not be reproduced in any manner without express written or verbal consent from authorized project representatives.

FLOOR PLAN

SHEET NUMBER
PAC-1