



Chick-fil-A

Chick-fil-A  
5200 Buffington Road  
Atlanta, Georgia 30349-2998

exp Services Inc.  
t: +1 905.793.9800 | f: +1 905.793.0641  
1595 Clark Boulevard  
Brampton, ON L6T 4V1  
Canada  
www.exp.com



- BUILDINGS • EARTH & ENVIRONMENT • ENERGY •
- INDUSTRIAL • INFRASTRUCTURE • SUSTAINABILITY •



# CHICK-FIL-A ERIN MILLS TOWN CENTRE 5100 Erin Mills Parkway Mississauga, ON

FSR#30088

BUILDING TYPE / SIZE: IP02  
RELEASE: XXXXXXXX

REVISION SCHEDULE		
NO.	DATE	DESCRIPTION
A	2025-06-06	FOR REVIEW
B	2025-01-07	FOR REVIEW
C	2026-03-02	ZBA/SPA SUBMISSION

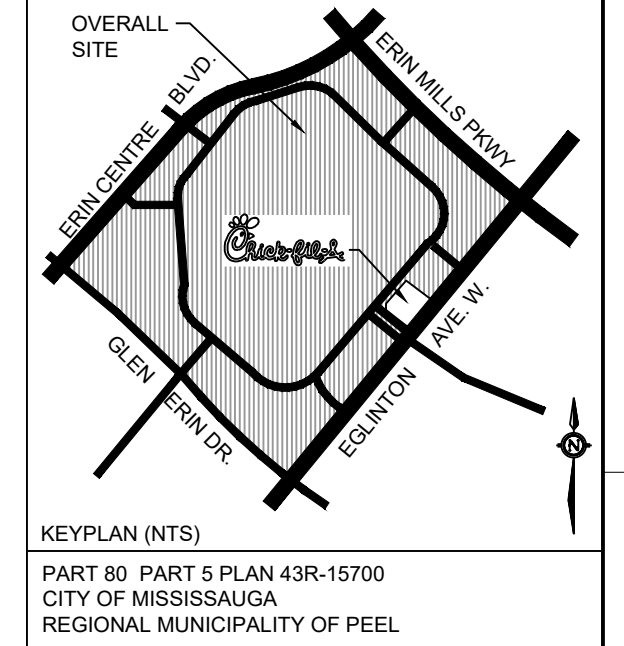
CITY #	PAM 25-03	REGION #	Cox
CONSULTANT PROJECT #	BRM0023002042-U0		
PROJECT STATUS	ZBA/SPA		
DATE	MARCH 2025		
DRAWN BY	J.K.		

Information contained on this drawing and in all digital files produced for above named project may not be reproduced in any manner without express written or verbal consent from authorized project representatives.

SHEET  
PREDEVELOPMENT  
DRAINAGE PLAN

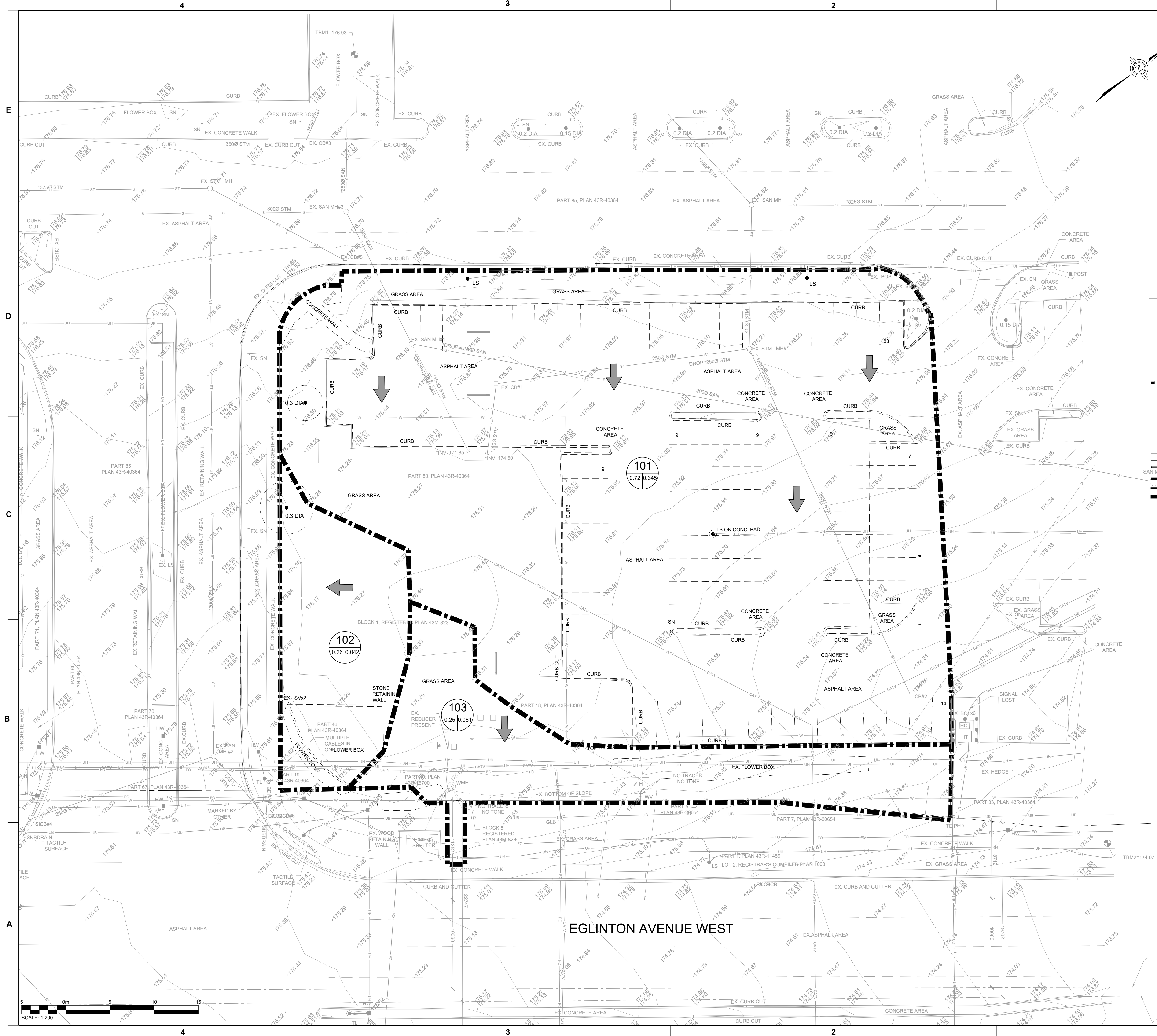
SHEET NUMBER

C300



LEGEND:

- PROPERTY LINE
- EX. CONC. CURB
- CATCHMENT I.D.
- RUN-OFF COEFFICIENT | AREA (ha)
- ← OVERLAND FLOW DIRECTION
- STORM SEWER CATCHMENT BOUNDARY
- ▲ MAIN ENTRANCE
- ▼ SECONDARY ENTRANCE
- NEW STORM CB
- NEW STORM CBMH
- EX. STORM MH
- EX. SANITARY MH
- EX. CONC. CURB
- NEW CONC. CURB
- NEW CURB CUT/DEPRESSED CURB
- PROP. LIMIT OF DEVELOPMENT
- TREE PROTECTION FENCE
- PROP. UNDERGROUND HYDRO
- EX. STORM SEWER
- EX. SANITARY SEWER
- EX. WATER MAINS
- EX. UNDERGROUND HYDRO
- EX. UNDERGROUND BELL
- EX. GAS
- PROP. STORM SEWER
- PROP. SANITARY SEWER
- PROP. WATER SERVICE
- PROP. GAS SERVICE
- PROP. FIRE LINE



E:\BRM\BRM-23002042-U0160 Execution\65 Drawings\01-30088-C300-RA.dwg  
2 March 2025

