

# TRAFFIC CALMING DEVICES



SPEED TABLE



SPEED CUSHIONS

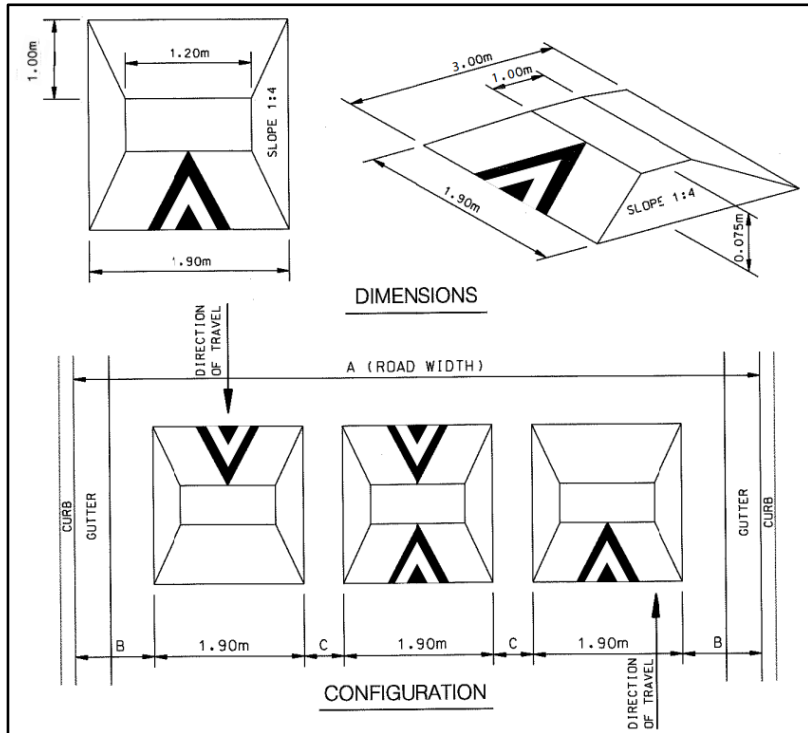


RAISED PEDESTRIAN CROSSOVER



SPLIT SPEED HUMPS

# SPEED CUSHION DESIGN



- Raised area on a roadway that does not cover the entire width of the road
- Designed to accommodate wide wheel base of emergency vehicles (easy passage)
- Designed to discourage drivers from travelling at excessive speeds
- A series of speed cushions is more effective than a single installation
- Use on neighbourhood roads

# HAIG BLVD

Between Lakeshore Road East and South Service Road



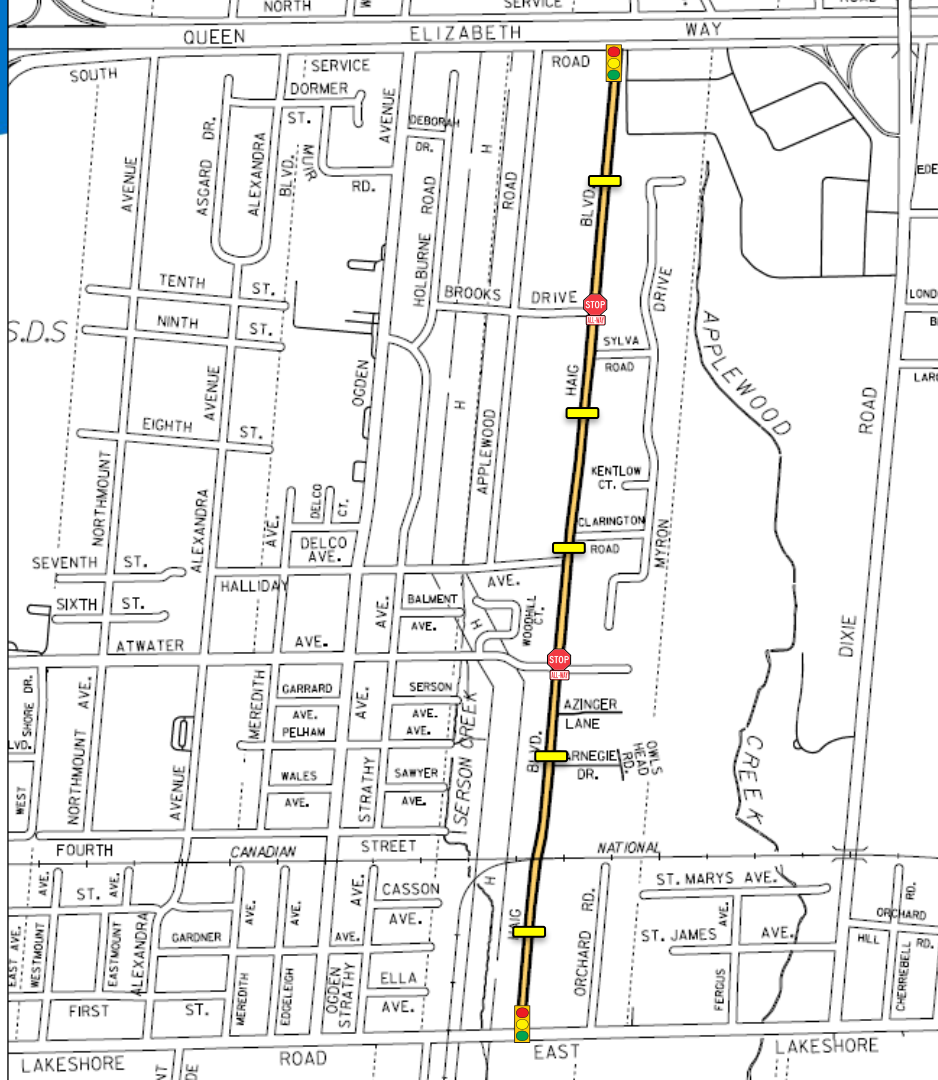
Existing Traffic Signal Locations



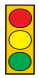


Existing All-Way Stop Locations

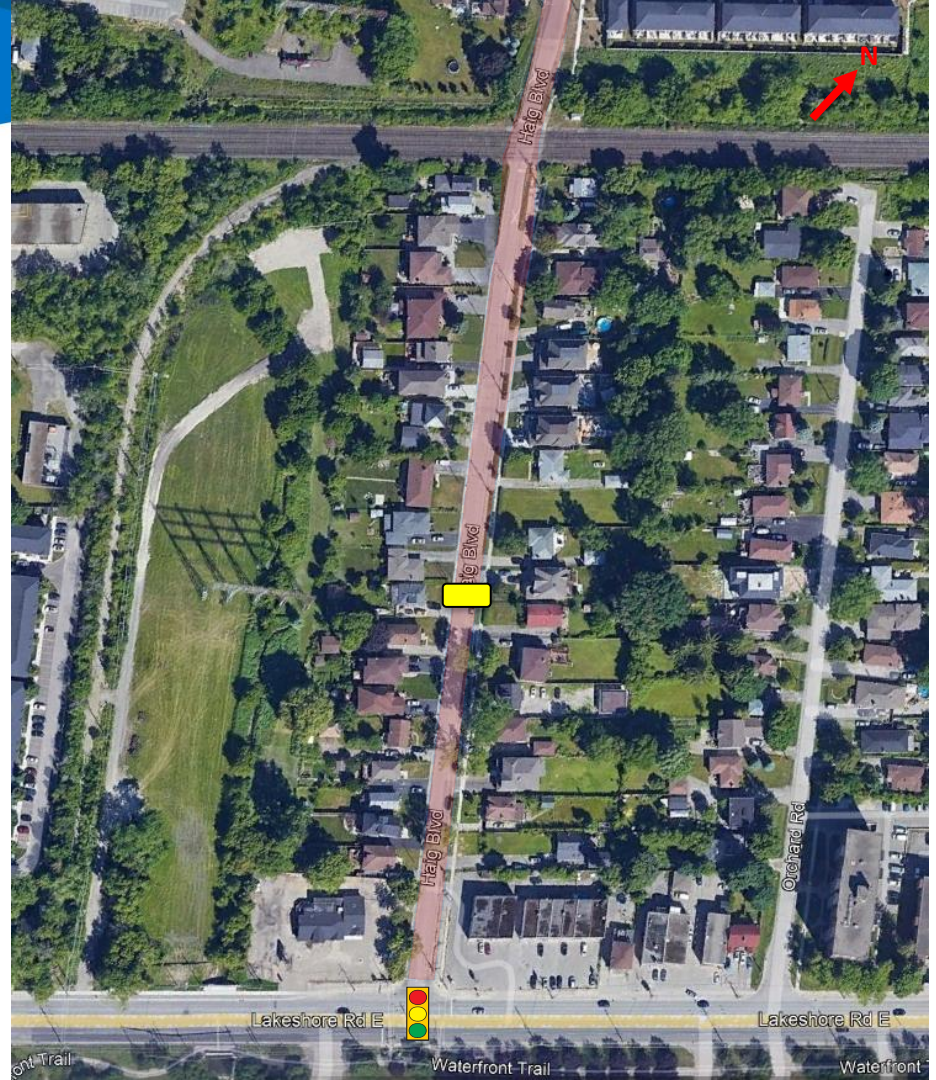


Proposed Speed Cushion Locations



# HAIG BLVD

-  Existing Traffic Signal Location
-  Proposed Speed Cushion Location
-  Existing Pavement Marking (yellow centre line)



# HAIG BLVD



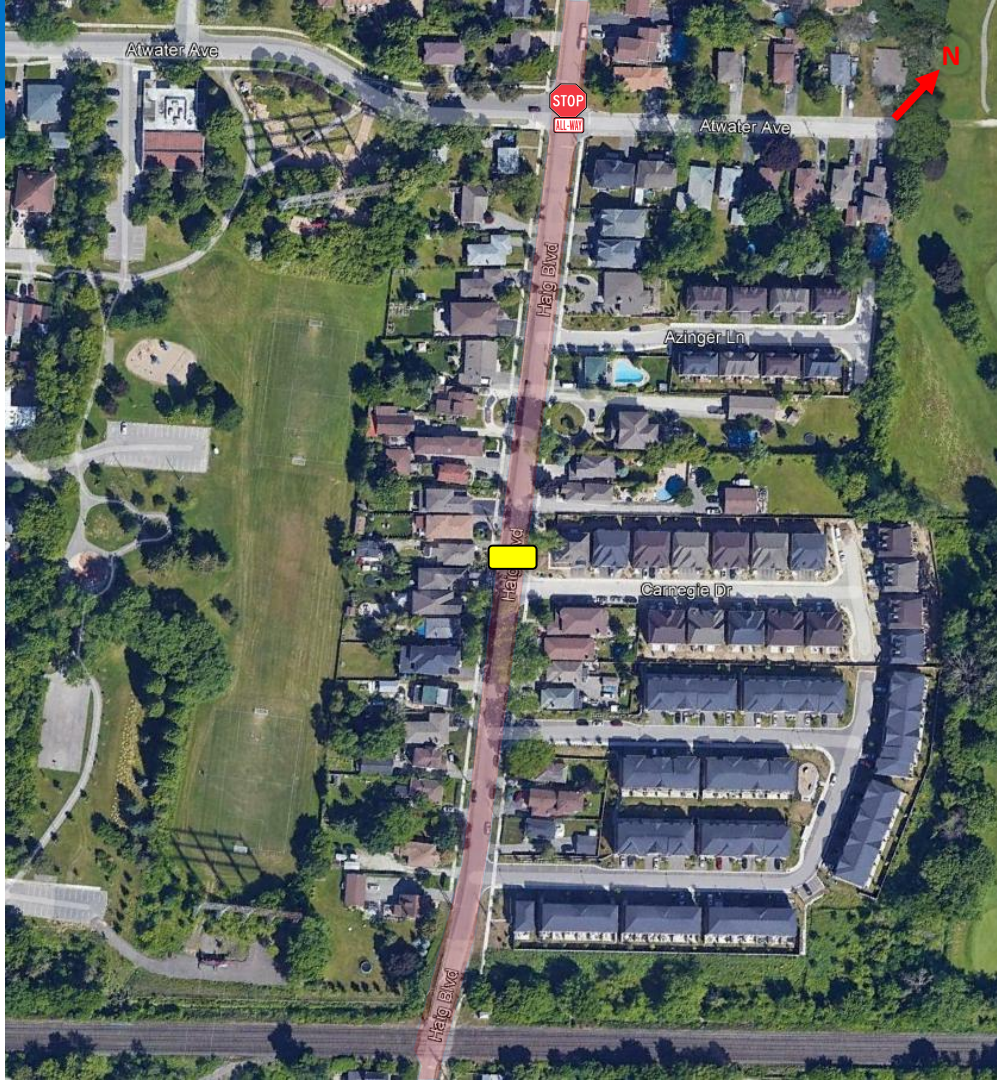
Existing All-Way  
Stop Location



Proposed Speed  
Cushion Location



Existing Pavement Marking  
(yellow centre line)



# HAIG BLVD



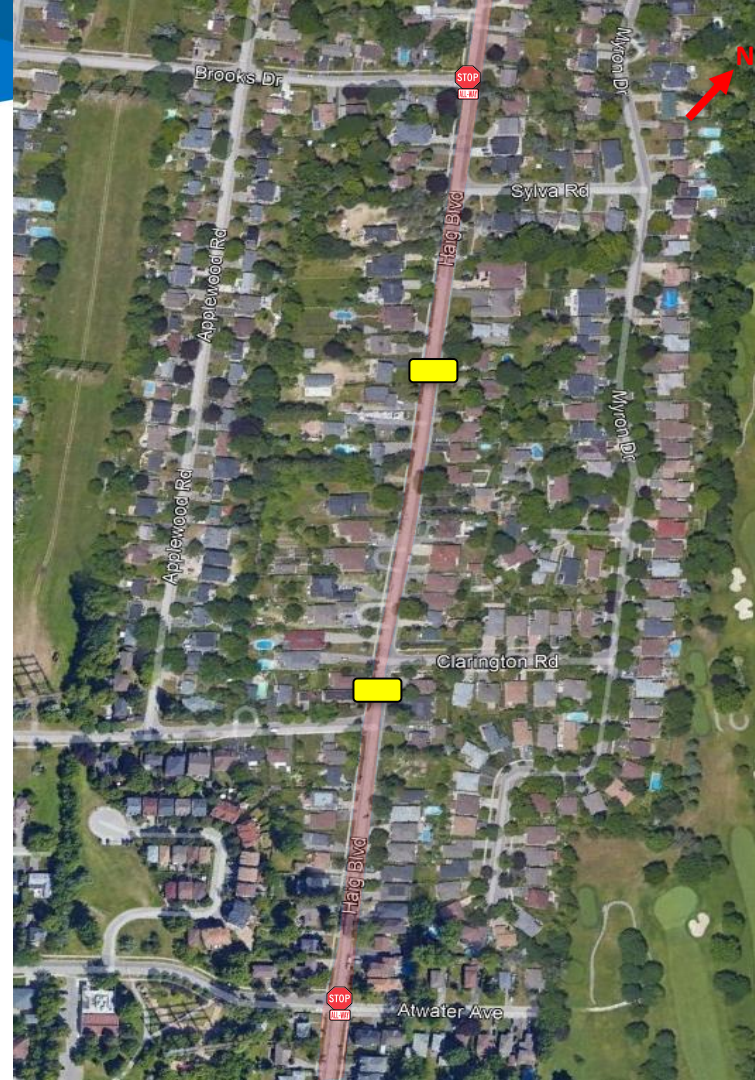
Existing All-Way  
Stop Locations



Proposed Speed  
Cushion Locations



Existing Pavement Marking  
(yellow centre line)



# HAIG BLVD



Existing Traffic Signal  
Location



Existing All-Way  
Stop Location



Proposed Speed  
Cushion Location



Existing Pavement Marking  
(yellow centre line)

