

## Schedule 7 Land Use Designations

### LAND USE DESIGNATIONS

Residential Low-Rise I	Office
Residential Low-Rise II	Business Employment
Residential Mid-Rise	Industrial
Residential High-Rise	Airport
Mixed Use	Institutional
Mixed Use Limited	Public Open Space
Downtown Mixed Use	Private Open Space
Downtown Core Mixed Use	Greenlands
Convenience Commercial	Parkway Belt West
Motor Vehicle Commercial	Utility
Mixed Employment	

### BASE MAP INFORMATION

Heritage Conservation District
1996 NEP/2000 NEF Composite Noise Contours
LBPIA Operating Area Boundary See Aircraft Noise Policies
Area Exception from LBPIA Operating Area
Natural Hazards

### STRATEGIC GROWTH AREAS

Downtown Core
Growth Centre
Growth Node
Employment Area
Lakeview Innovation
Corridor Employment Area
Special Policy Area
Special Purpose Area

### Notes:

- Major Transit Station Areas are shown on Schedule 8 and Schedules 8A to 8R.
- The limits of the Natural Hazards shown on this schedule are for illustrative purposes only. The appropriate Conservation Authority should be consulted to determine their actual location.
- Base map information (e.g. roads, highways, railways, watercourses), including any lands or bodies of water outside the city boundaries, is shown for information purposes only.
- Roads shown on this schedule are existing or under construction and are shown for information purposes only. For future roads refer to Schedule 3, Long Term Street Network.

# MISSISSAUGA OFFICIAL PLAN

## Schedule 7 Land Use Designations



### LAND USE DESIGNATIONS

Residential Low-Rise I	Office
Residential Low-Rise II	Industrial
Residential Mid-Rise	Airport
Residential High-Rise	Institutional
Mixed Use	Public Open Space
Mixed Use Limited	Private Open Space
Downtown Mixed Use	Greenlands
Downtown Core Mixed Use	Parkway Belt West
Convenience Commercial	Utility
Motor Vehicle Commercial	
Mixed Employment	

### STRATEGIC GROWTH AREAS

Downtown Core	Employment Area
Growth Centre	Lakeview Employment Corridor Employment Area
Growth Node	Special Policy Area
	Special Purpose Area

### BASE MAP INFORMATION

Heritage Conservation District	Area Exception from LBPIA Operating Area
1996 NEP/2000 NEF Composite Noise Contours	Natural Hazards
LBPIA Operating Area Boundary	See Aircraft Noise Policies

### Notes:

1. Major Transit Station Areas are shown on Schedule 8 and Schedules 8A to 8R.
2. The limits of the Natural Hazards shown on this schedule are for illustrative purposes only. The appropriate Conservation Authority should be consulted to determine their actual location.
3. Base map information (e.g. roads, highways, railways, watercourses), including any lands or bodies of water outside the city boundaries, is shown for information purposes only.
4. Roads shown on this schedule are existing or under construction and are shown for information purposes only. For future roads refer to Schedule 3, Long Term Street Network.

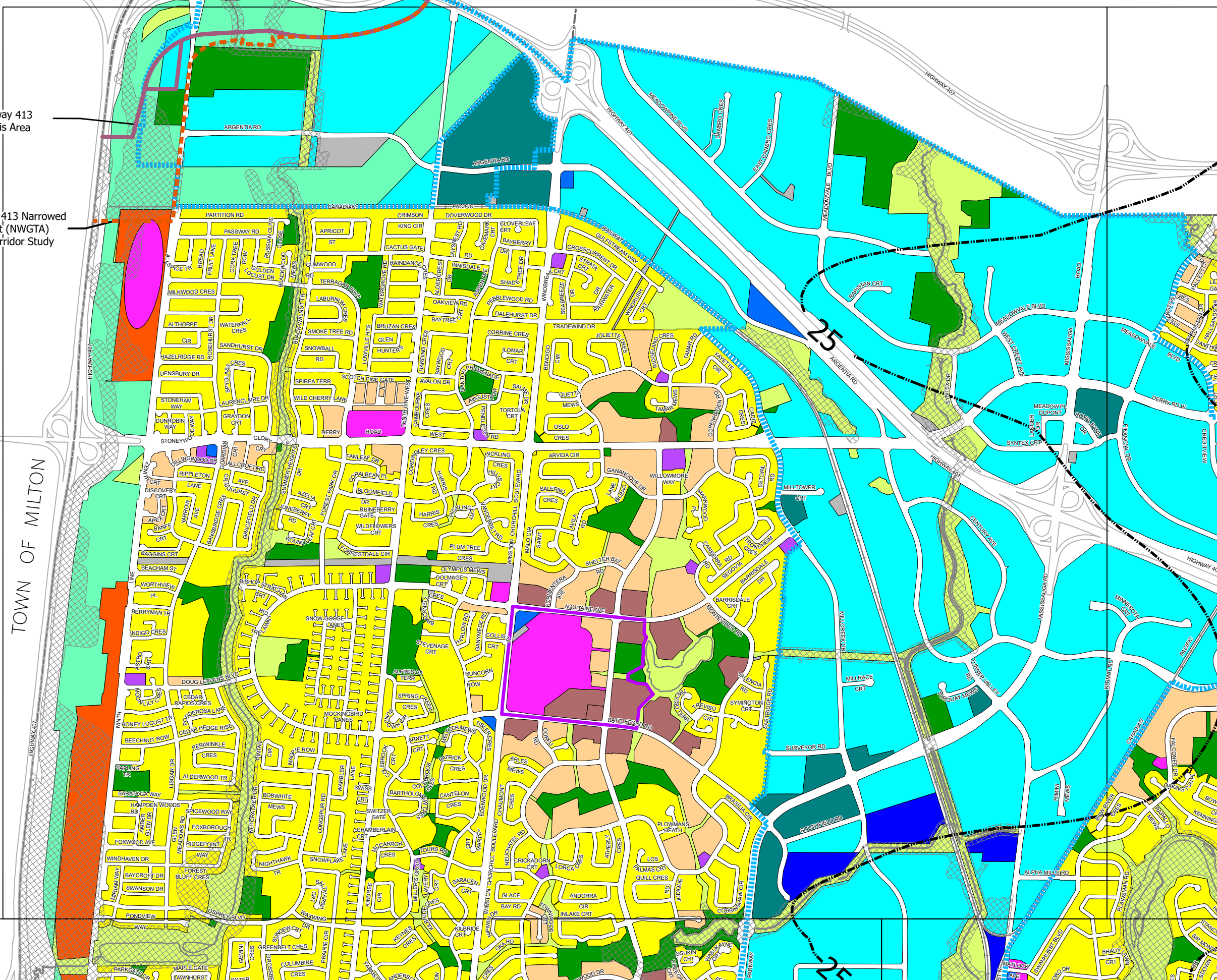


Proposed Highway 413 Focused Analysis Area

Proposed Highway 413 Narrowed Area of Interest (NWGTA) Transmission Corridor Study

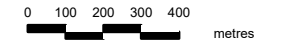
TOWN OF MILTON

TOWN OF HALTON HILLS



# MISSISSAUGA OFFICIAL PLAN

## Schedule 7 Land Use Designations



### LAND USE DESIGNATIONS

- |                          |                     |
|--------------------------|---------------------|
| Residential Low-Rise I   | Office              |
| Residential Low-Rise II  | Business Employment |
| Residential Mid-Rise     | Industrial          |
| Residential High-Rise    | Airport             |
| Mixed Use                | Institutional       |
| Mixed Use Limited        | Public Open Space   |
| Downtown Core Mixed Use  | Private Open Space  |
| Convenience Commercial   | Greenlands          |
| Motor Vehicle Commercial | Parkway Belt West   |
| Mixed Employment         | Utility             |

### STRATEGIC GROWTH AREAS

- |               |  |
|---------------|--|
| Downtown Core | Employment Area                              |
| Growth Centre | Lakeview Innovation Corridor Employment Area |
| Growth Node   | Special Policy Area                          |
|               | Special Purpose Area                         |

### BASE MAP INFORMATION

- |  |  |
|--|--|
| Heritage Conservation District             | Area Exception from LBPIA Operating Area |
| 1996 NEP/2000 NEF Composite Noise Contours | Natural Hazards                          |
| LBPIA Operating Area Boundary              |  |
- See Aircraft Noise Policies

### Notes:

- Major Transit Station Areas are shown on Schedule 8 and Schedules 8A to 8R.
- The limits of the Natural Hazards shown on this schedule are for illustrative purposes only. The appropriate Conservation Authority should be consulted to determine their actual location.
- Base map information (e.g. roads, highways, railways, watercourses), including any lands or bodies of water outside the city boundaries, is shown for information purposes only.
- Roads shown on this schedule are existing or under construction and are shown for information purposes only. For future roads refer to Schedule 3, Long Term Street Network.



# MISSISSAUGA OFFICIAL PLAN

## Schedule 7 Land Use Designations



### LAND USE DESIGNATIONS

Residential Low-Rise I	Office
Residential Low-Rise II	Business Employment
Residential Mid-Rise	Industrial
Residential High-Rise	Airport
Mixed Use	Institutional
Mixed Use Limited	Public Open Space
Downtown Mixed Use	Private Open Space
Downtown Core Mixed Use	Greenlands
Convenience Commercial	Parkway Belt West
Motor Vehicle Commercial	Utility
Mixed Employment	

### STRATEGIC GROWTH AREAS

Downtown Core	Employment Area
Growth Centre	Lakeview Innovation Corridor Employment Area
Growth Node	Special Policy Area
	Special Purpose Area

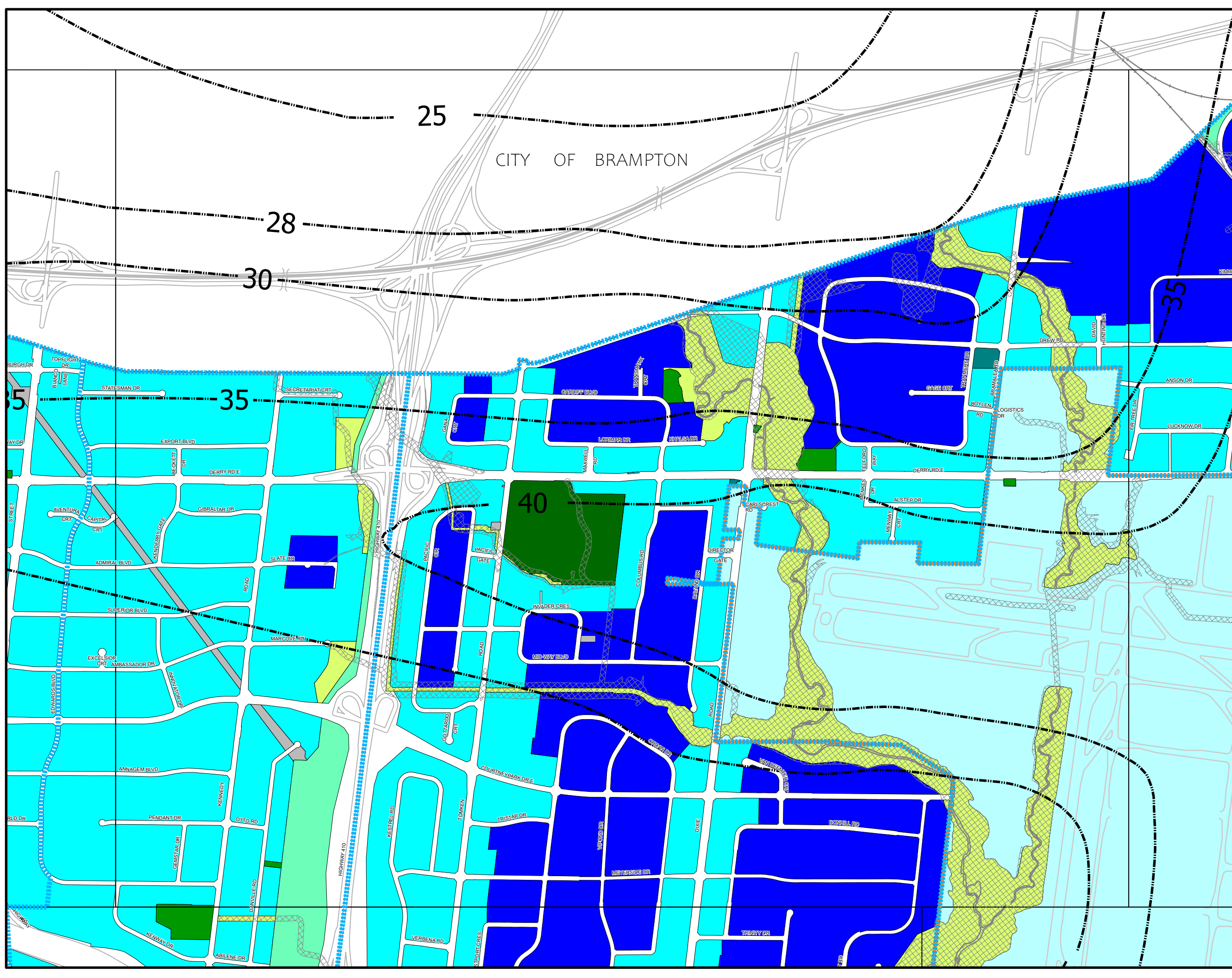
### BASE MAP INFORMATION

Heritage Conservation District	Area Exception from LBPIA Operating Area
1996 NEP/2000 NEF Composite Noise Contours	Natural Hazards
LBPIA Operating Area Boundary	

See Aircraft Noise Policies

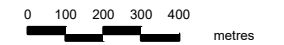
### Notes:

1. Major Transit Station Areas are shown on Schedule 8 and Schedules 8A to 8R.
2. The limits of the Natural Hazards shown on this schedule are for illustrative purposes only. The appropriate Conservation Authority should be consulted to determine their actual location.
3. Base map information (e.g. roads, highways, railways, watercourses), including any lands or bodies of water outside the city boundaries, is shown for information purposes only.
4. Roads shown on this schedule are existing or under construction and are shown for information purposes only. For future roads refer to Schedule 3, Long Term Street Network.



# MISSISSAUGA OFFICIAL PLAN

## Schedule 7 Land Use Designations



### LAND USE DESIGNATIONS

Residential Low-Rise I	Office
Residential Low-Rise II	Business Employment
Residential Mid-Rise	Industrial
Residential High-Rise	Airport
Mixed Use	Institutional
Mixed Use Limited	Public Open Space
Downtown Mixed Use	Private Open Space
Downtown Core Mixed Use	Greenlands
Convenience Commercial	Parkway Belt West
Motor Vehicle Commercial	Utility
Mixed Employment	

### STRATEGIC GROWTH AREAS

Downtown Core	Employment Area
Growth Centre	Lakeview Innovation Corridor Employment Area
Growth Node	Special Policy Area
Special Purpose Area	

### BASE MAP INFORMATION

Heritage Conservation District	Area Exception from LBPIA Operating Area
1996 NEP/2000 NEF Composite Noise Contours	Natural Hazards
LBPIA Operating Area Boundary	
	See Aircraft Noise Policies

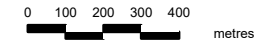
### Notes:

1. Major Transit Station Areas are shown on Schedule 8 and Schedules 8A to 8R.
2. The limits of the Natural Hazards shown on this schedule are for illustrative purposes only. The appropriate Conservation Authority should be consulted to determine their actual location.
3. Base map information (e.g. roads, highways, railways, watercourses), including any lands or bodies of water outside the city boundaries, is shown for information purposes only.
4. Roads shown on this schedule are existing or under construction and are shown for information purposes only. For future roads refer to Schedule 3, Long Term Street Network.



# MISSISSAUGA OFFICIAL PLAN

## Schedule 7 Land Use Designations



### LAND USE DESIGNATIONS

	Residential Low-Rise I		Office
	Residential Low-Rise II		Business Employment
	Residential Mid-Rise		Industrial
	Residential High-Rise		Airport
	Mixed Use		Institutional
	Mixed Use Limited		Public Open Space
	Downtown Mixed Use		Private Open Space
	Downtown Core Mixed Use		Greenlands
	Convenience Commercial		Parkway Belt West
	Motor Vehicle Commercial		Utility
	Mixed Employment		

### STRATEGIC GROWTH AREAS

	Downtown Core		Employment Area
	Growth Centre		Lakeview Employment Area
	Growth Node		Corridor Employment Area
			Special Policy Area
			Special Purpose Area

### BASE MAP INFORMATION

	Heritage Conservation District		Area Exception from LBPIA Operating Area
	1996 NEP/2000 NEF Composite Noise Contours		Natural Hazards
	LBPIA Operating Area Boundary		
	See Aircraft Noise Policies		

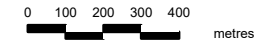
### Notes:

- Major Transit Station Areas are shown on Schedule 8 and Schedules 8A to 8R.
- The limits of the Natural Hazards shown on this schedule are for illustrative purposes only. The appropriate Conservation Authority should be consulted to determine their actual location.
- Base map information (e.g. roads, highways, railways, watercourses), including any lands or bodies of water outside the city boundaries, is shown for information purposes only.
- Roads shown on this schedule are existing or under construction and are shown for information purposes only. For future roads refer to Schedule 3, Long Term Street Network.



# MISSISSAUGA OFFICIAL PLAN

## Schedule 7 Land Use Designations



### LAND USE DESIGNATIONS

- |                          |                     |
|--------------------------|---------------------|
| Residential Low-Rise I   | Office              |
| Residential Low-Rise II  | Business Employment |
| Residential Mid-Rise     | Industrial          |
| Residential High-Rise    | Airport             |
| Mixed Use                | Institutional       |
| Mixed Use Limited        | Public Open Space   |
| Downtown Mixed Use       | Private Open Space  |
| Downtown Core Mixed Use  | Greenlands          |
| Convenience Commercial   | Parkway Belt West   |
| Motor Vehicle Commercial | Utility             |
| Mixed Employment         |                     |

### STRATEGIC GROWTH AREAS

- |               |  |
|---------------|--|
| Downtown Core | Employment Area                              |
| Growth Centre | Lakeview Innovation Corridor Employment Area |
| Growth Node   | Special Policy Area                          |
|               | Special Purpose Area                         |

### BASE MAP INFORMATION

- |  |  |
|--|--|
| Heritage Conservation District             | Area Exception from LBPIA Operating Area |
| 1996 NEP/2000 NEF Composite Noise Contours | Natural Hazards                          |
| LBPIA Operating Area Boundary              |  |
|  | See Aircraft Noise Policies              |

### Notes:

- Major Transit Station Areas are shown on Schedule 8 and Schedules 8A to 8R.
- The limits of the Natural Hazards shown on this schedule are for illustrative purposes only. The appropriate Conservation Authority should be consulted to determine their actual location.
- Base map information (e.g. roads, highways, railways, watercourses), including any lands or bodies of water outside the city boundaries, is shown for information purposes only.
- Roads shown on this schedule are existing or under construction and are shown for information purposes only. For future roads refer to Schedule 3, Long Term Street Network.



# MISSISSAUGA OFFICIAL PLAN

## Schedule 7 Land Use Designations



### LAND USE DESIGNATIONS

Residential Low-Rise I	Business Employment
Residential Low-Rise II	Industrial
Residential Mid-Rise	Airport
Residential High-Rise	Institutional
Mixed Use	Public Open Space
Mixed Use Limited	Private Open Space
Downtown Mixed Use	Greenlands
Downtown Core Mixed Use	Parkway Belt West
Convenience Commercial	Utility
Motor Vehicle Commercial	
Mixed Employment	

### STRATEGIC GROWTH AREAS

Downtown Core	Employment Area
Growth Centre	Lakeview Innovation Corridor Employment Area
Growth Node	Special Policy Area
	Special Purpose Area

### BASE MAP INFORMATION

Heritage Conservation District	Area Exception from LBPIA Operating Area
1996 NEP/2000 NEF Composite Noise Contours	Natural Hazards
LBPIA Operating Area Boundary	

See Aircraft Noise Policies

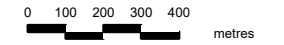
### Notes:

1. Major Transit Station Areas are shown on Schedule 8 and Schedules 8A to 8R.
2. The limits of the Natural Hazards shown on this schedule are for illustrative purposes only. The appropriate Conservation Authority should be consulted to determine their actual location.
3. Base map information (e.g. roads, highways, railways, watercourses), including any lands or bodies of water outside the city boundaries, is shown for information purposes only.
4. Roads shown on this schedule are existing or under construction and are shown for information purposes only. For future roads refer to Schedule 3, Long Term Street Network.



# MISSISSAUGA OFFICIAL PLAN

## Schedule 7 Land Use Designations



### LAND USE DESIGNATIONS

Residential Low-Rise I	Office
Residential Low-Rise II	Business Employment
Residential Mid-Rise	Industrial
Residential High-Rise	Airport
Mixed Use	Institutional
Mixed Use Limited	Public Open Space
Downtown Mixed Use	Private Open Space
Downtown Core Mixed Use	Greenlands
Convenience Commercial	Parkway Belt West
Motor Vehicle Commercial	Utility
Mixed Employment	

### STRATEGIC GROWTH AREAS

Downtown Core	Employment Area
Growth Centre	Lakeview Innovation Corridor Employment Area
Growth Node	Special Policy Area
	Special Purpose Area

### BASE MAP INFORMATION

Heritage Conservation District	Area Exception from LBPIA Operating Area
1996 NEP/2000 NEF Composite Noise Contours	Natural Hazards
LBPIA Operating Area Boundary	See Aircraft Noise Policies

### Notes:

1. Major Transit Station Areas are shown on Schedule 8 and Schedules 8A to 8R.
2. The limits of the Natural Hazards shown on this schedule are for illustrative purposes only. The appropriate Conservation Authority should be consulted to determine their actual location.
3. Base map information (e.g. roads, highways, railways, watercourses), including any lands or bodies of water outside the city boundaries, is shown for information purposes only.
4. Roads shown on this schedule are existing or under construction and are shown for information purposes only. For future roads refer to Schedule 3, Long Term Street Network.



# MISSISSAUGA OFFICIAL PLAN

## Schedule 7 Land Use Designations



### LAND USE DESIGNATIONS

Residential Low-Rise I	Office
Residential Low-Rise II	Business Employment
Residential Mid-Rise	Industrial
Residential High-Rise	Airport
Mixed Use	Institutional
Mixed Use Limited	Public Open Space
Downtown Mixed Use	Private Open Space
Downtown Core Mixed Use	Greenlands
Convenience Commercial	Parkway Belt West
Motor Vehicle Commercial	Utility
Mixed Employment	

### STRATEGIC GROWTH AREAS

Downtown Core	Employment Area
Growth Centre	Lakeview Innovation Corridor Employment Area
Growth Node	Special Policy Area
	Special Purpose Area

### BASE MAP INFORMATION

Heritage Conservation District	Area Exception from LBPIA Operating Area
1996 NEP/2000 NEF Composite Noise Contours	Natural Hazards
LBPIA Operating Area Boundary	

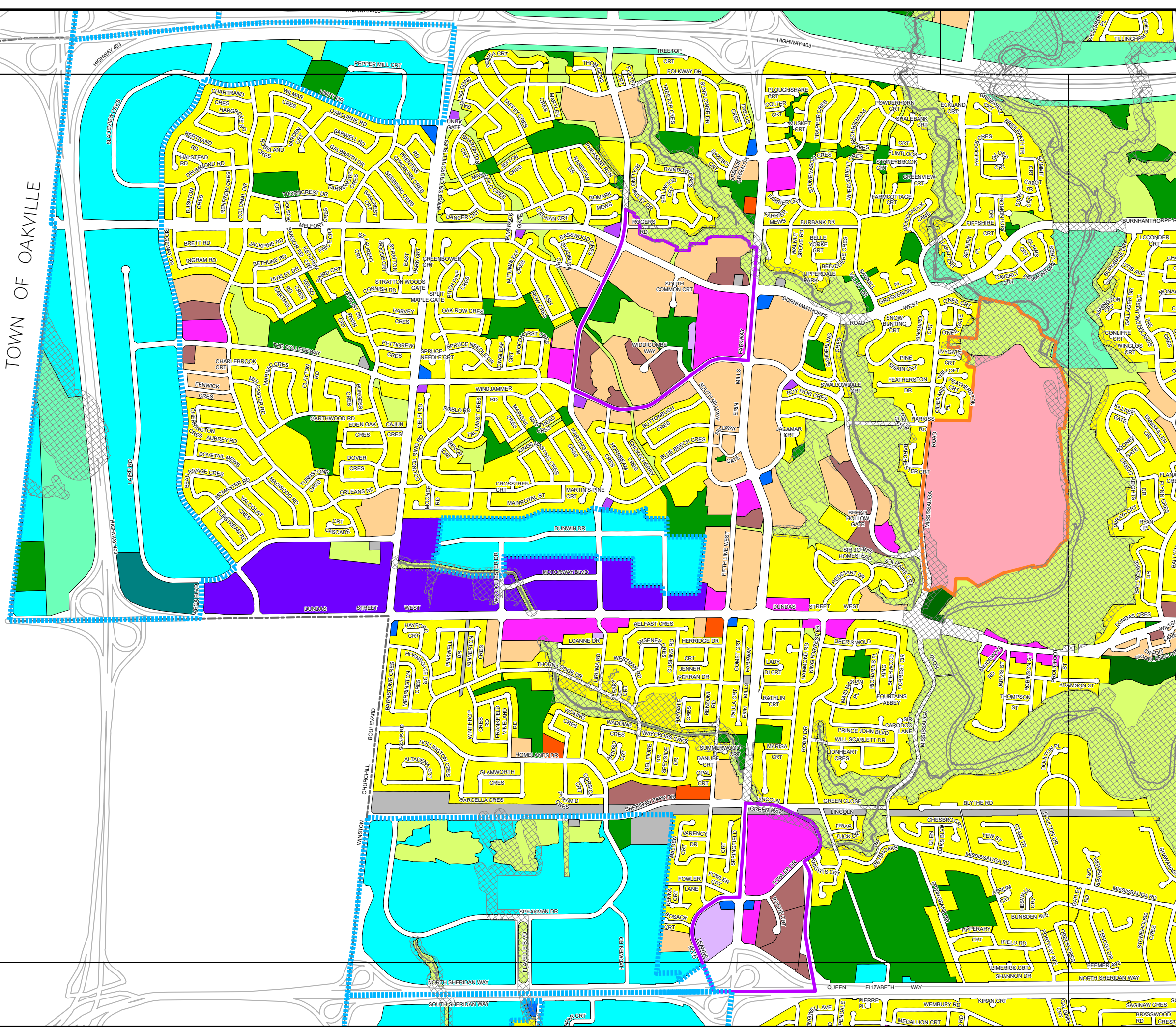
See Aircraft Noise Policies

### Notes:

1. Major Transit Station Areas are shown on Schedule 8 and Schedules 8A to 8R.
2. The limits of the Natural Hazards shown on this schedule are for illustrative purposes only. The appropriate Conservation Authority should be consulted to determine their actual location.
3. Base map information (e.g. roads, highways, railways, watercourses), including any lands or bodies of water outside the city boundaries, is shown for information purposes only.
4. Roads shown on this schedule are existing or under construction and are shown for information purposes only. For future roads refer to Schedule 3, Long Term Street Network.



TOWN OF OAKVILLE



# MISSISSAUGA OFFICIAL PLAN

## Schedule 7 Land Use Designations



### LAND USE DESIGNATIONS

- |                          |                     |
|--------------------------|---------------------|
| Residential Low-Rise I   | Office              |
| Residential Low-Rise II  | Business Employment |
| Residential Mid-Rise     | Industrial          |
| Residential High-Rise    | Airport             |
| Mixed Use                | Institutional       |
| Mixed Use Limited        | Public Open Space   |
| Downtown Mixed Use       | Private Open Space  |
| Downtown Core Mixed Use  | Greenlands          |
| Convenience Commercial   | Parkway Belt West   |
| Motor Vehicle Commercial | Utility             |
| Mixed Employment         |                     |

### STRATEGIC GROWTH AREAS

- |               |                          |
|---------------|--------------------------|
| Downtown Core | Employment Area          |
| Growth Centre | Lakeview Employment Area |
| Growth Node   | Corridor Employment Area |
|               | Special Policy Area      |
|               | Special Purpose Area     |

### BASE MAP INFORMATION

- |  |  |
|--|--|
| Heritage Conservation District             | Area Exception from LBPIA Operating Area |
| 1996 NEP/2000 NEF Composite Noise Contours | Natural Hazards                          |
| LBPIA Operating Area Boundary              |  |
- See Aircraft Noise Policies

### Notes:

1. Major Transit Station Areas are shown on Schedule 8 and Schedules 8A to 8R.
2. The limits of the Natural Hazards shown on this schedule are for illustrative purposes only. The appropriate Conservation Authority should be consulted to determine their actual location.
3. Base map information (e.g. roads, highways, railways, watercourses), including any lands or bodies of water outside the city boundaries, is shown for information purposes only.
4. Roads shown on this schedule are existing or under construction and are shown for information purposes only. For future roads refer to Schedule 3, Long Term Street Network.



# MISSISSAUGA OFFICIAL PLAN

## Schedule 7 Land Use Designations



### LAND USE DESIGNATIONS

- |                          |                     |
|--------------------------|---------------------|
| Residential Low-Rise I   | Office              |
| Residential Low-Rise II  | Business Employment |
| Residential Mid-Rise     | Industrial          |
| Residential High-Rise    | Airport             |
| Mixed Use                | Institutional       |
| Mixed Use Limited        | Public Open Space   |
| Downtown Mixed Use       | Private Open Space  |
| Downtown Core Mixed Use  | Greenlands          |
| Convenience Commercial   | Parkway Belt West   |
| Motor Vehicle Commercial | Utility             |
| Mixed Employment         |                     |

### STRATEGIC GROWTH AREAS

- |               |  |
|---------------|--|
| Downtown Core | Employment Area                              |
| Growth Centre | Lakeview Innovation Corridor Employment Area |
| Growth Node   | Special Policy Area                          |
|               | Special Purpose Area                         |

### BASE MAP INFORMATION

- |  |  |
|--|--|
| Heritage Conservation District             | Area Exception from LBPIA Operating Area |
| 1996 NEP/2000 NEF Composite Noise Contours | Natural Hazards                          |
| LBPIA Operating Area Boundary              |  |
|  | See Aircraft Noise Policies              |

### Notes:

- Major Transit Station Areas are shown on Schedule 8 and Schedules 8A to 8R.
- The limits of the Natural Hazards shown on this schedule are for illustrative purposes only. The appropriate Conservation Authority should be consulted to determine their actual location.
- Base map information (e.g. roads, highways, railways, watercourses), including any lands or bodies of water outside the city boundaries, is shown for information purposes only.
- Roads shown on this schedule are existing or under construction and are shown for information purposes only. For future roads refer to Schedule 3, Long Term Street Network.



# MISSISSAUGA OFFICIAL PLAN

## Schedule 7 Land Use Designations



### LAND USE DESIGNATIONS

	Residential Low-Rise I		Office
	Residential Low-Rise II		Business Employment
	Residential Mid-Rise		Industrial
	Residential High-Rise		Airport
	Mixed Use		Institutional
	Mixed Use Limited		Public Open Space
	Downtown Mixed Use		Private Open Space
	Downtown Core Mixed Use		Greenlands
	Convenience Commercial		Parkway Belt West
	Motor Vehicle Commercial		Utility
	Mixed Employment		

### STRATEGIC GROWTH AREAS

	Downtown Core		Employment Area
	Growth Centre		Lakeview Innovation Corridor Employment Area
	Growth Node		Special Policy Area
			Special Purpose Area

### BASE MAP INFORMATION

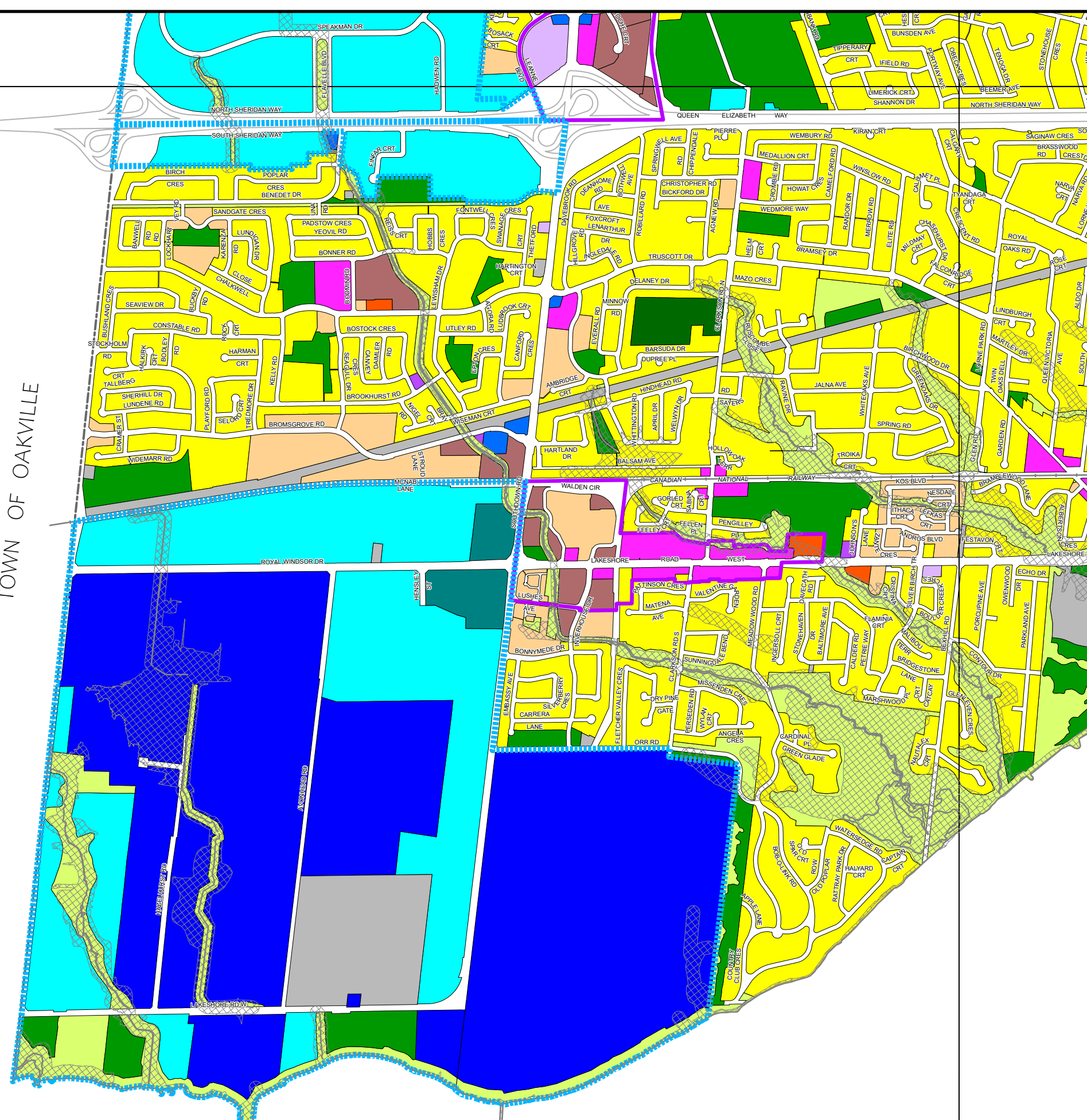
	Heritage Conservation District		Area Exception from LBPIA Operating Area
	1996 NEP/2000 NEF Composite Noise Contours		Natural Hazards
	LBPIA Operating Area Boundary		

See Aircraft Noise Policies

### Notes:

1. Major Transit Station Areas are shown on Schedule 8 and Schedules 8A to 8R.
2. The limits of the Natural Hazards shown on this schedule are for illustrative purposes only. The appropriate Conservation Authority should be consulted to determine their actual location.
3. Base map information (e.g. roads, highways, railways, watercourses), including any lands or bodies of water outside the city boundaries, is shown for information purposes only.
4. Roads shown on this schedule are existing or under construction and are shown for information purposes only. For future roads refer to Schedule 3, Long Term Street Network.

TOWN OF OAKVILLE



# MISSISSAUGA OFFICIAL PLAN

## Schedule 7 Land Use Designations



### LAND USE DESIGNATIONS

Residential Low-Rise I	Office
Residential Low-Rise II	Business Employment
Residential Mid-Rise	Industrial
Residential High-Rise	Airport
Mixed Use	Institutional
Mixed Use Limited	Public Open Space
Downtown Mixed Use	Private Open Space
Downtown Core Mixed Use	Greenlands
Convenience Commercial	Parkway Belt West
Motor Vehicle Commercial	Utility
Mixed Employment	

### STRATEGIC GROWTH AREAS

Downtown Core	Employment Area
Growth Centre	Lakeview Innovation Corridor Employment Area
Growth Node	Special Policy Area
	Special Purpose Area

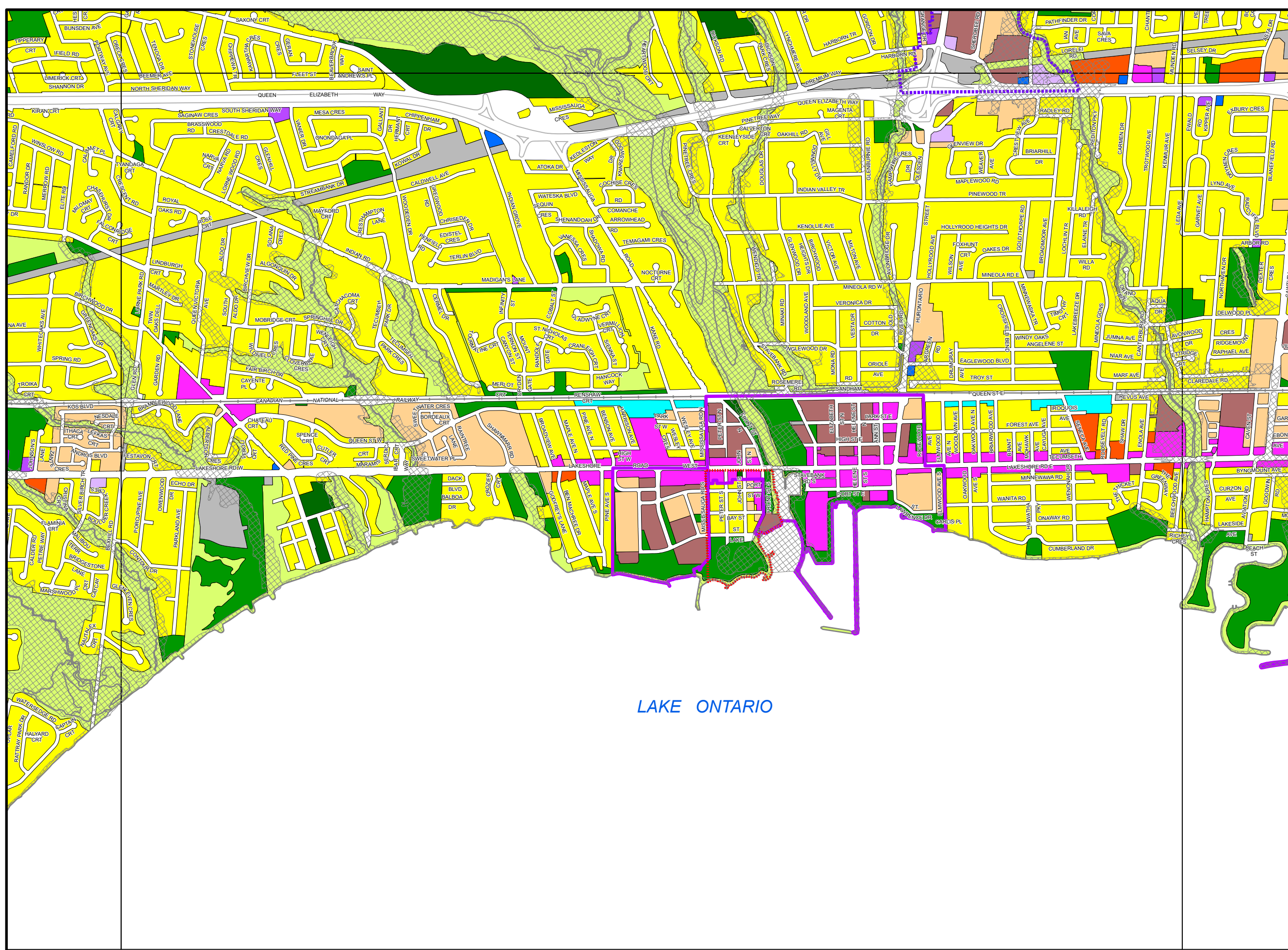
### BASE MAP INFORMATION

Heritage Conservation District	Area Exception from LBPIA Operating Area
1996 NEP/2000 NEF Composite Noise Contours	Natural Hazards
LBPIA Operating Area Boundary	

See Aircraft Noise Policies

### Notes:

1. Major Transit Station Areas are shown on Schedule 8 and Schedules 8A to 8R.
2. The limits of the Natural Hazards shown on this schedule are for illustrative purposes only. The appropriate Conservation Authority should be consulted to determine their actual location.
3. Base map information (e.g. roads, highways, railways, watercourses), including any lands or bodies of water outside the city boundaries, is shown for information purposes only.
4. Roads shown on this schedule are existing or under construction and are shown for information purposes only. For future roads refer to Schedule 3, Long Term Street Network.

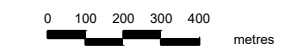


LAKE ONTARIO



# MISSISSAUGA OFFICIAL PLAN

## Schedule 7 Land Use Designations



### LAND USE DESIGNATIONS

Residential Low-Rise I	Office
Residential Low-Rise II	Business Employment
Residential Mid-Rise	Industrial
Residential High-Rise	Airport
Mixed Use	Institutional
Mixed Use Limited	Public Open Space
Downtown Core Mixed Use	Private Open Space
Convenience Commercial	Greenlands
Motor Vehicle Commercial	Parkway Belt West
Mixed Employment	Utility

### STRATEGIC GROWTH AREAS

Downtown Core	Employment Area
Growth Centre	Lakeview Innovation Area
Growth Node	Corridor Employment Area
	Special Policy Area
	Special Purpose Area

### BASE MAP INFORMATION

Heritage Conservation District	Area Exception from LBPIA Operating Area
1996 NEP/2000 NEF Composite Noise Contours	Natural Hazards
LBPIA Operating Area Boundary	See Aircraft Noise Policies

### Notes:

- Major Transit Station Areas are shown on Schedule 8 and Schedules 8A to 8R.
- The limits of the Natural Hazards shown on this schedule are for illustrative purposes only. The appropriate Conservation Authority should be consulted to determine their actual location.
- Base map information (e.g. roads, highways, railways, watercourses), including any lands or bodies of water outside the city boundaries, is shown for information purposes only.
- Roads shown on this schedule are existing or under construction and are shown for information purposes only. For future roads refer to Schedule 3, Long Term Street Network.

